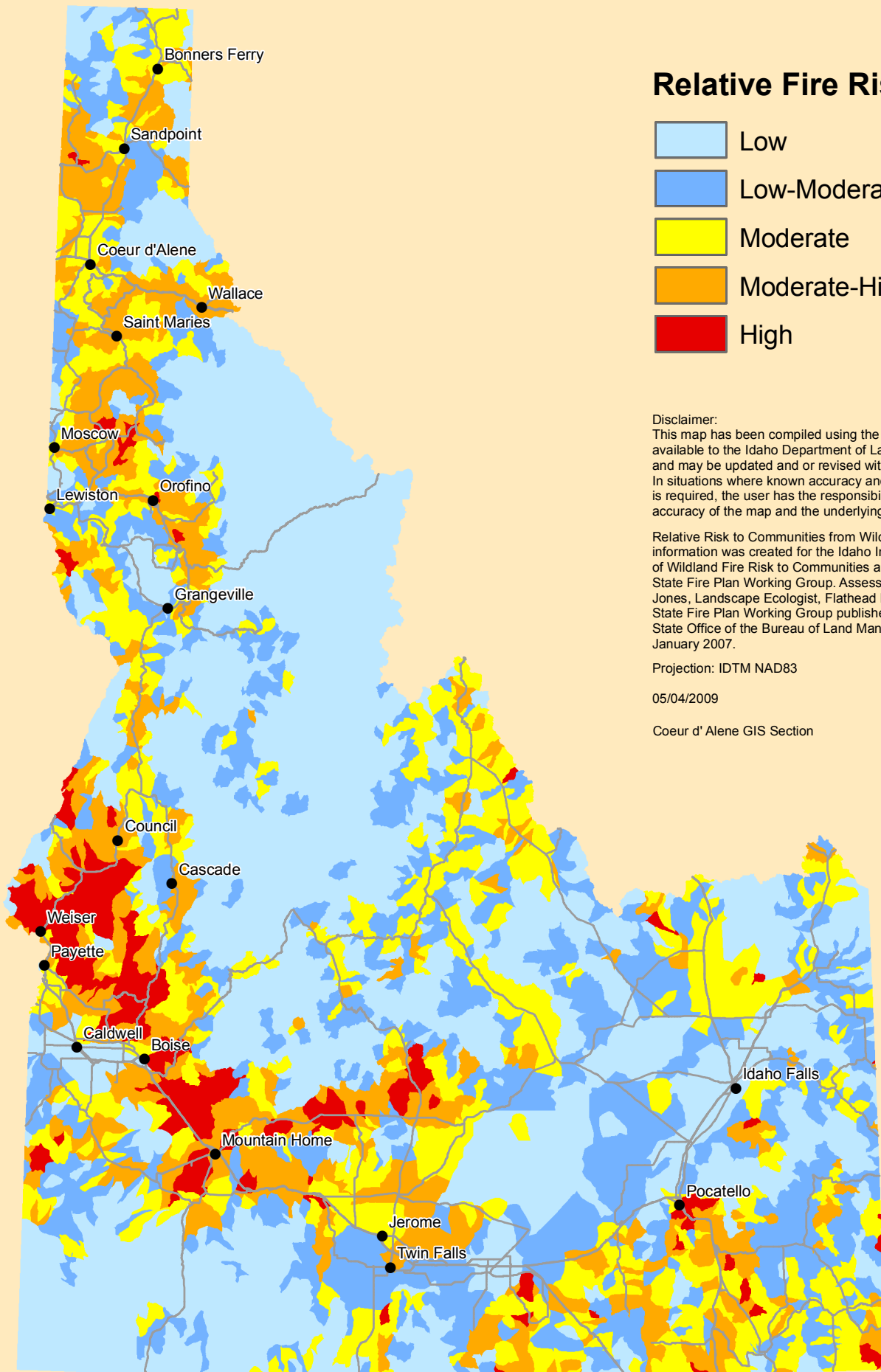
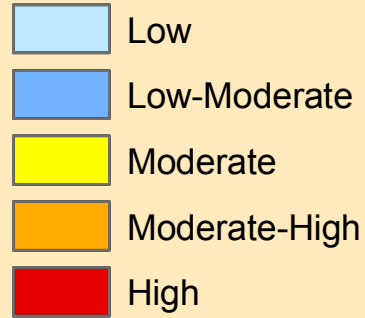


Relative Risk to Communities from Wildland Fire in Idaho



Relative Fire Risk



Disclaimer:
 This map has been compiled using the best information available to the Idaho Department of Lands at the time and may be updated and or revised without notice. In situations where known accuracy and completeness is required, the user has the responsibility to verify the accuracy of the map and the underlying data sources.

Relative Risk to Communities from Wildland Fire in Idaho information was created for the Idaho Interagency Assessment of Wildland Fire Risk to Communities and approved by Idaho State Fire Plan Working Group. Assessment completed by Jeff Jones, Landscape Ecologist, Flathead National Forest, Idaho State Fire Plan Working Group published through the Idaho State Office of the Bureau of Land Management, January 2007.

Projection: IDTM NAD83

05/04/2009

Coeur d'Alene GIS Section

