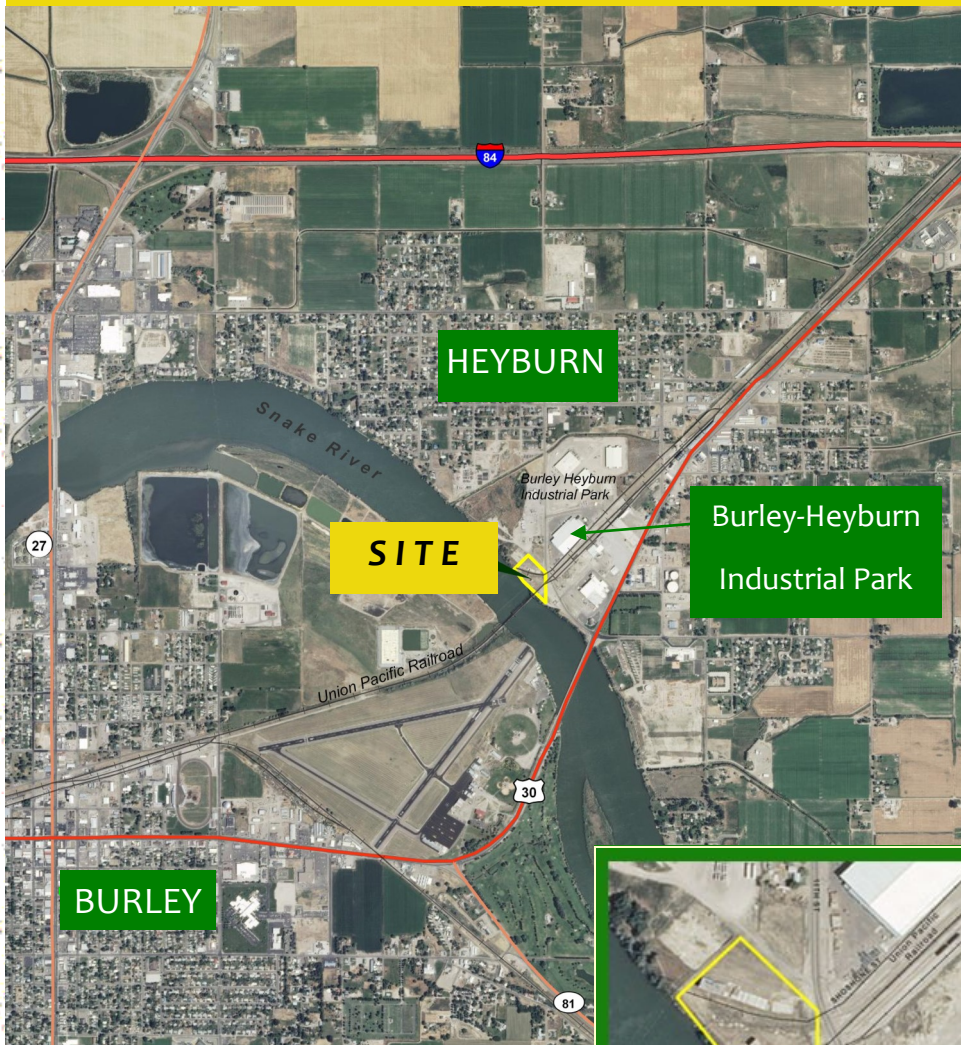


Heyburn Industrial Property

INDUSTRIAL LAND FOR LEASE



AVAILABLE FOR GROUND LEASE

ACRES: 3.71

ZONING: IH (Industrial Heavy)

UTILITIES: Electricity, Water/Sewer, Cable television, Telephone

ACCESS: State Highway 30 connects property via O Street to I-84 approx 1 mile north

LEASE TERMS: See

Contact Information

COMMENTS

- 2 Rail spurs
- Irregular shape — borders Snake River and O Street
- Located close to Burley-Heyburn Industrial Park
- This is a ground lease.

Questions about this property?

Contact Tim Duffner
Email: tduffner@idl.idaho.gov
South Central Supervisory Area
Idaho Department of Lands
324 South 417 East, Suite 2
Jerome ID 83338
Phone (208) 324-2561
Fax (208) 324-2917



is a member of the Western States Land Commissioners