

Fuels Management by the BLM in Bannock County

Note: *With the exception of annual precipitation ranging from 12 inches to 30 inches annually (due to lower elevation), the physiography is the same as described in the FS portion of this mitigation plan.*

Introduction: Woodlands (Juniper, Aspen, Maple) and conifer (Douglas-fir, lodgepole, sub-alpine fir) constitute the major fuel types of concern within those Bannock County lands managed by the Bureau of Land Management (BLM). Consequently, all fuels reduction projects conducted by the BLM are done either in consultation or conjunction with the forestry staff. Multiple projects are planned to occur concurrently.

Projects

Firefighter and Public safety are the primary emphasis of fuels reduction projects within those lands managed by the BLM. Management emphasis is placed on Wildland Urban Interface (WUI) areas as identified by the National Fire Plan, Ten Year Comprehensive Strategy and Implementation Plan, and the Cohesive Strategy.

Recently completed WUI projects in Bannock County include:

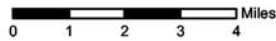
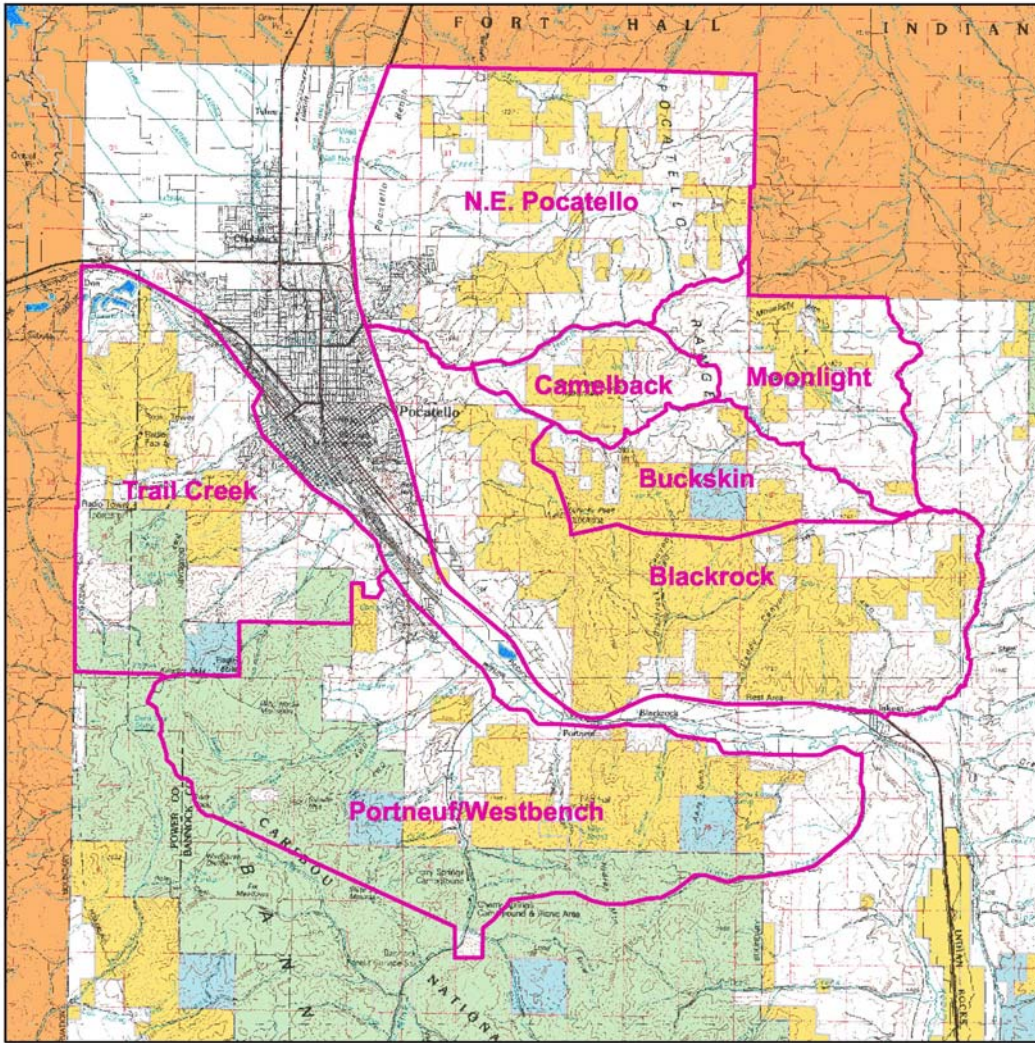
- a.) **Yago Canyon/ Swan Song T.S.**, Downey Municipal Watershed/WUI. Completed fall 2002. Further planning in progress.
- b.) **Moonlight Mountain Harvest**, Pocatello WUI. Harvest phase completed in 1991. Further fuels reduction planning underway.
- c.) **Garden Gap**. Pocatello WUI. Thinning completed in 2001.

WUI Projects currently in Progress in Bannock County include:

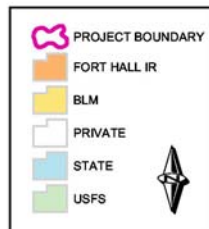
- a.) **Buckskin**. 6,237 acres. Located directly east and adjacent to Pocatello. Includes private, state and federal lands.
- b.) **Portneuf /Westbench**. 27,206 acres located directly south and adjacent to Pocatello. Includes private, state and federal lands.
- c.) **Lava Ranch**. 1,065 acres. Located south west of Lava Hot Springs. Includes BLM lands directly adjacent to Lava Ranch Subdivision.

WUI projects in planning include:

- a.) **Sawmill Creek.** 411 acres. Scheduled to begin implementation in 2004. Located directly north of Inkom. Includes BLM lands in proximity to homes located along Rapid Creek and Webb Creek.
- b.) **Moonlight Mountain.** 2005. 1,672 acres
- c.) **Camelback Mountain.** 2006. 1400 acres
- d.) **N.E. Pocatello** 2007. 4779 acres
- e.) **Trail Creek** 2008. 4090 acres
- f.) **Blackrock Canyon** 2009. 12, 500 acres
- g.) **Downey Watershed** Unknown
- h.) **Petticoat Peak** Unknown



BLM Pocatello Field Office Wildland Urban Interface Fuels Projects



No warranty is made by the Bureau of Land Management for use of the data for purposes not intended by BLM.

DRAFT

Created by Pocatello Field Office GIS
 Date: 8 October, 2003
 Directory:
 \\gis poc1\projects\requests\bswann\bannock_county_map\
 ArcMap Document File: wui_bannockcountyplan.mxd