

MITIGATION OR ACTION PLAN

Crooked Creek Zone

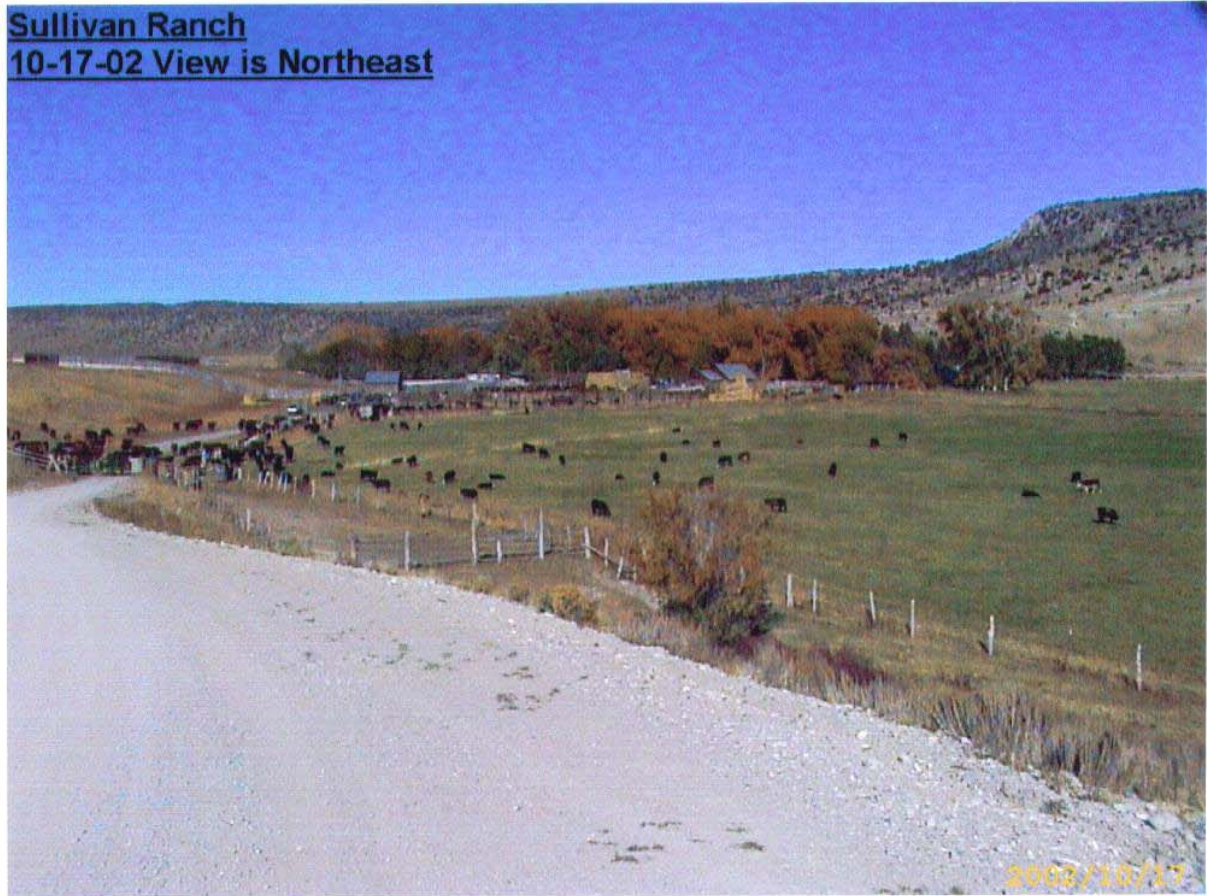
The Crooked Creek drainage lies at the southern tip and southeast side of the Beaverhead Mountain Range. It is 174,080 acres in size with 28,480 acres being private land. The largest blocks of private land are south of Highway 22. Crooked Creek and Deep Creek are the main drainages in this zone. The lower part of this zone is agriculture land and sagebrush. The upper slopes have juniper and mahogany with Douglas fir and Limber Pine at the higher elevations. The population in the summer is about 100. Crooked Creek and Warm Springs are the main recreation areas. Only 8 fires have occurred since 1979, however, the large Gallagher Peak Fire, which burned 37,230 acres and was started by lightning, was in this zone.

Mitigation Plan:

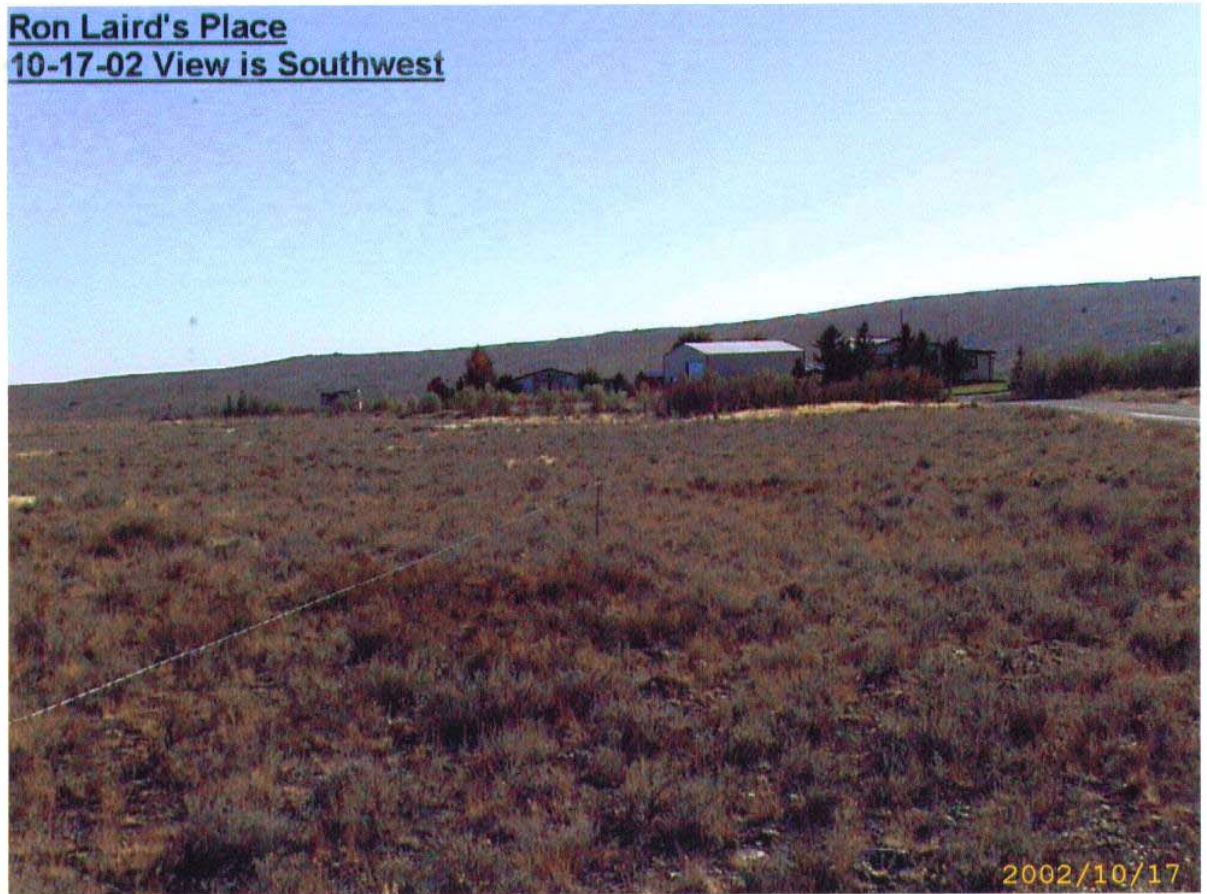
1. Implement a fire prevention and education program that contacts businesses, residents and rural homeowners. This program would provide for fire risk evaluation of residences or businesses and provide a way to protect property for wildland fire. There is material now available for property owners to review and develop a safe zone around residences and other valued property. There are also other programs available for youth groups to visit areas and help them evaluate their property and provide suggestions on how to create safe zones around their homes and other structures. Materials are currently available from the Bureau of Land Management and Forest Service. These materials could be provided in the summer of 2003. The youth fire risk evaluation program would be grant sponsored and could be requested for 2004.
2. Develop a county map of roads with names, numbers and signs so homes or businesses could be located for all emergencies including fires. Signs would be placed on the ground to guide emergency vehicles. A professional map service would be obtained to develop the map. After the map was developed, signs would be made and the signs would be installed on the ground. Contract for the map would be issued in 2003. The sign construction and ground installation would be done in 2004.
3. The City/County Volunteer Fire Department needs more volunteers to make the Department most effective. Giving proper training and compensation for training and for fires suppression may help encourage volunteers. The Spanish population has continued to grow in Dubois and many families' own homes. Encouragement to all who live in the City to support the volunteers should be considered. This could begin immediately in 2003.
4. Future County development is done in a manner that protects homes from the threat of wildland fire. County Planning and Zoning should consider adopting the 30-foot set back clause for new homes being built and the wildland fire code for new construction. This would begin in 2003.

5. Burning permits have been available in Clark County for many years. The Dubois Ranger District has been issuing the permits for the State of Idaho. With the Sheriff's Office being designated as the Information Center, it would be the Sheriff's Office that would issue burning permits from May 10 through October 20. The Sheriff's Office would then notify the suppression forces stationed in Clark County of the burning permit issuance and its location. This would also include notifying the East Idaho Fire Dispatch located in Idaho Falls. This process would begin with the burning season on May 10, 2003. A handout would be made up by the County to pass out to all the homeowners and landowners in the County to remind them to obtain a burning permit. This handout will be prepared by the Wildland Fire Committee and reviewed and approved by the County Commissioners and sent out in May 2003.
6. Develop a County Evacuation Plan. Clark County Emergency Services will work with all involved agencies to develop an Evacuation Plan. This will begin in 2003.
7. Providing the appropriate fire service resources to maintain an effective emergency response system to wildland fires will depend on the Federal Agencies and their fire budget for the coming year. Both Bureau of Land Management and the Forest Service provide initial attack units at Dubois, with helicopter and additional forces nearby with present funding. The City/County Volunteer Fire Department is often the first to arrive on a wildland fire and need a brush truck similar to the engines the Forest Service uses. This type of fire engine would be much more efficient than rolling the larger fire trucks to wildland fires. Forest Service has one of these engines available for this coming season and would make it available to Clark County. Grants are available to transfer this type of brush truck and should be done the spring of 2003.
8. Explore the potential of making dead timber available as firewood for the general public in Federal fuel reduction programs. As a fuel reduction measure, support the Caribou-Targhee N.F. in making dead timber along forest roads available for firewood. This should begin in 2003 on the Dubois Ranger District.
9. Encourage hazard fuel treatment on Federal, State, and private lands adjacent to moderate and high-risk areas. The hazard fuel reduction treatments on Federal, State, and private lands will be prioritized each year. Since this priority list will have new projects added, they will be evaluated and prioritized each year.
(Appendix e)
10. Wildland conditions are continually changing in the County and the Wildland Committee should meet quarterly beginning October 2003 to review the plan and update where needed.

Sullivan Ranch
10-17-02 View is Northeast

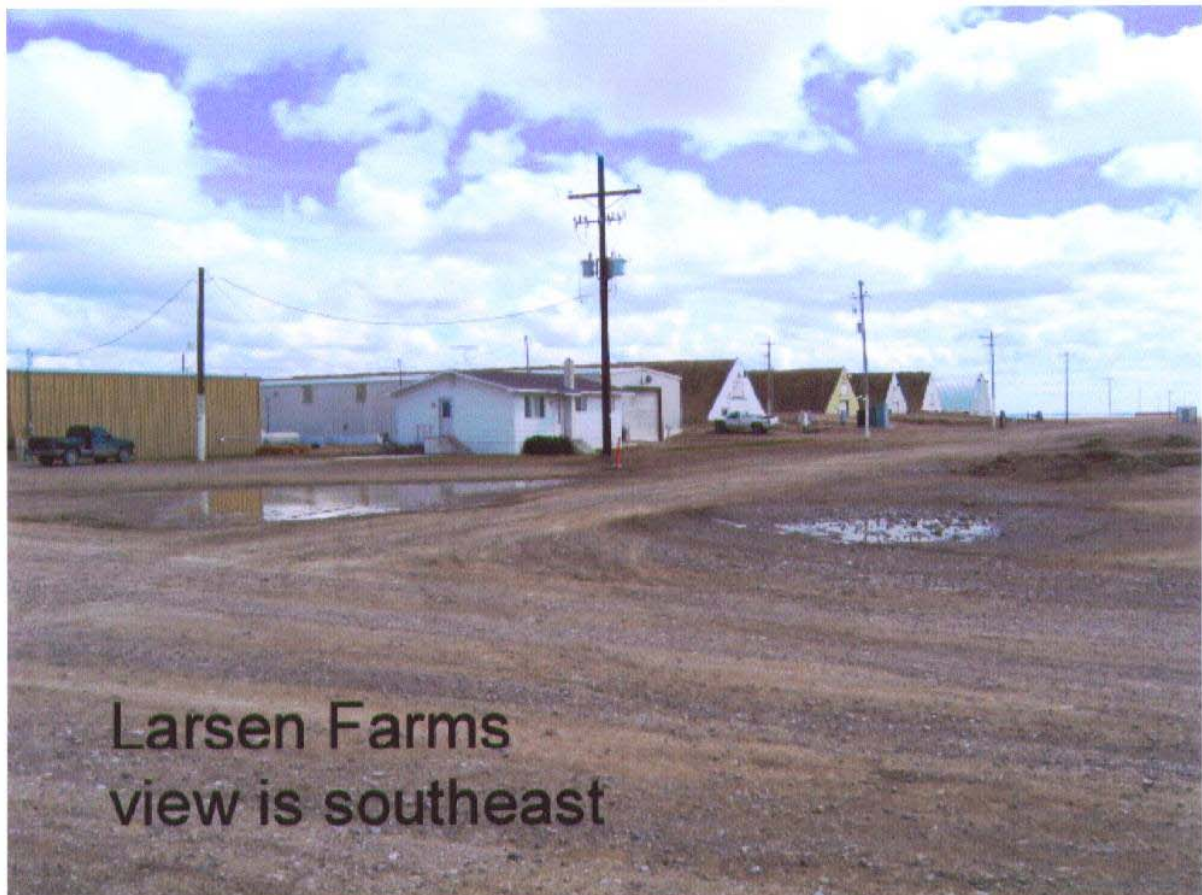


Ron Laird's Place
10-17-02 View is Southwest





Larsen Farms Bunkhouse
view east 4-7-03



Larsen Farms
view is southeast