

**GEM COUNTY**  
**Community Wildfire Protection Plan**  
**Addendum 5/8/2009**  
**Gem County Fire Working Group**

**County Work Group Membership**

Coordinator: Russ Manwaring, West Central Highlands RC&D

Other Members:

Shannon Crays, Fire Chief, City of Emmett

J. Dennis Weaver, Gem Fire District #2

Rich Welch, Fire Chief, Gem Fire District #1

Lan Smith, Gem County Commissioner

Anita Taylor, Gem Emergency Services

Tony DeMasters, Emmett Ranger District

Tammy Cook, Emmett Ranger District

Brad Trosky, Middleton Fire Department

Brad Hawkins-Clark, Gem Planning & Zoning

Robert Narus, Boise District BLM

Sarah Heide, Boise District BLM

Dan Christman, Idaho Dept Lands

**County's Fire Mitigation Goals:**

- Ensure that the land development ordinances and building codes in Gem County support the mitigation of wildland urban interface fire dangers
- Promote effective fuel reduction programs in all wildland urban interface areas in Gem County
- Emphasize prevention of wildland urban interface fires using a proactive, cooperative approach
- Promote the development of water resources and user agreements for wildland resources throughout Gem County
- Facilitate County-wide mutual aid agreements and a County-wide communications frequency assignment
- Produce and distribute functional maps Department/District Maps
- Facilitate wildfire training with responding agencies

**Fire Mitigation Actions:**

- Prevention - promote local jurisdictions working together and with Federal and State agencies to establish on-going local prevention programs
- Regulation - assist the County to develop and adopt a county Wildland Urban Interface Fire Code
- Fuel reduction - Identify priority fuel reduction projects and pursue the appropriate funding to mitigate the danger

**Hazardous Fuels Treatments, Non Federal Lands:**

- Firebreak treatment around subdivisions or increased defensible space on individual homes on the sloping foothills surrounding the Emmett Valley on the east, south and north slopes

- Firebreak along Hwy 16, this would involve private and federal lands

## **Hazardous Fuels Treatments, Federal Lands**

### **Boise National Forest Lands within Gem County Projects:**

#### **1. Ola Summit Mastication Project- Implementation 2009-85 acres**

This project will reduce hazardous fuel loadings created from logging and thinning slash located on Ola Summit. Treatments will be implemented using a mastication mulching machine. Mulching the finer fuel loadings in turn will decrease fire behavior should a wildfire occur in the area. Treatment will provide fire fighter safety, public safety and provide defensible space to the homes located to the East of the project area.

#### **2. Third Fork Restoration Project- Implementation 2010-2011-1000 acres**

The Third Fork Project is an integrated fuels/wildlife project encompassing 1,000 acres of treatment area. Initial objectives were to reduce fuels around private and federal lands by modifying stand density, structure, and species composition. These treatments will provide forest conditions that are more resistant to crown fire risk, decrease fire behavior in and around WUI area's and provide for fire fighter and public safety.

The primary emphasis for wildlife habitat improvement proposed by this project is to move forest characteristics toward conditions favoring white-headed woodpeckers and flammulated owls and improve winter range habitat for elk and deer in this dry ponderosa pine/Douglas fir habitat type. This area also matches the priority habitat identified by Idaho Partners in Flight (2000, pp. 70-78) for conservation and contains wild turkeys. Conditions post-treatment would move stands toward desired conditions relevant to PIF (Partners in Flight) objectives and turkeys would benefit from under burning. As a result of the benefits to elk and turkeys, funding opportunities for implementation are possible from the Rocky Mountain Elk Foundation and the National Wild Turkey Federation.

#### **3. Sagehen Restoration- Implementation 2013-2016 1000 acres**

This project is in and around the Sagehen reservoir located on the west side of the Emmett Ranger District in Gem County. Treatments would include a reduction of fuels around the reservoir and adjacent campgrounds. By modifying stand density, structure, and species composition, this will provide forest conditions that are more resistant to crown fire risk, and decrease fire behavior in and around the reservoir. Treatments would provide defensible space for fire suppression. This is a high recreational public use area on the forest. Providing fuels treatments to this area would also provide for public safety in and around the Sagehen reservoir.

#### **4. North Kennedy Cottonwood Stewardship Implementation is ongoing.**

The North Kennedy-Cottonwood Stewardship Project encompasses about 8,600 acres and is seven miles north of Ola and lies primarily in Gem County. The proposed action includes modify the existing road system, treat 3,646 acres of vegetation through commercial thin, and non-commercial, and create a fuel break on approximately 117 acres along FSRD-601. By treating the timbered stands this will reduce forest susceptibility to uncharacteristic wildfire. Post harvest activities include prescribed burning of landings and under burning of specified units. Salmon-blading will occur in areas sited to be reforested.

## **5. Second Fork Commercial Thin**

This project is located in the Second Fork drainage on the Emmett Ranger District. Preliminary proposed action for this area would be to modify stand density, structure, and species composition to provide forest conditions that are more resistant to insects, disease and wildfire. An expected consequence of a more fire-resistant condition is reduced risk to lives, property, and the municipal watershed from wildfire. Prescribed fire or mechanical treatments will be used to reduce fuels or to maintain desirable fuel loadings within project area reducing wildfire hazards. Management of existing road systems would also be a consideration.

### **Firefighting Assistance Needs**

Needs Assessment for various Fire Districts not necessarily listed in order of priority

- County Wide – A wildland urban fire defensible space brochure to reach the public through local agencies handling land use or other special purpose permits
- Gem Fire Districts #1 & 2 - Redzone Assessment funding to assess district hazardous
- Gem Fire District #1 - A new substation at the intersection of Butte Road and Van Dussen Road
- Gem Fire District #1 - Build onto the 3<sup>rd</sup> street station to relieve crowding a station #2, Letha, and allow placement of the ladder truck in town
- Gem Fire District #1 - An additional heavy brush engine
- Gem Fire District #1 - A heavy extrication truck to carry a 6,000 pound cascade system, extrication equipment, and scene lighting

### **Other Gem County Issues that need to be addressed**

- Further work on adoption of building codes that would require mitigation if building in the urban interface.
- Open Burning Regulations: During closed fire season (May 10<sup>th</sup> thru Oct 20<sup>th</sup>) burn permits need to be issued for all burning outside incorporated city limits
- Continued homeowner education and home assessment need to continue
- Setup a County-wide Group Frequency, pre-assigned for all entities or agencies responding to calls in Gem County
- Produce updated coverage maps for each District
- Need road signs especially in upper county where Forest Service and County Road signs conflict or do not indicate both FS number and county name
- City to develop a fire station on East Main and Substation Road
- Considerations of Fire Districts # 1 & 2 consolidation
- Rules and Methods for out of District MOUs need to be clarified
- State burning permits requirements need to be enforced

### **Fire Department Updates**

**Gem Fire District #1:** Rick Welch, Chief 115 West 3<sup>rd</sup> St.; Emmett Idaho 83617; 208-365-2012

The Gem County Fire Protection District # 1 is a paid-by-call department, with a part-time salaried chief. The district currently has 26 fully trained personnel, with another four in training. The district has 30 trained firefighters, trained in both wildland and structural fire fighting. Although the district's primary responsibility is structural fire, the nature of the dry

environment and proximity of homes to flammable vegetation results in wildland suppression activities as well. The district's available resources are successful in suppressing small to large grass and range fires. However, when fires exceed capacities or involve forest fuels, the district relies on cooperative agreements with Federal and State of Idaho as well as assistance from surrounding fire departments. Continuing growth and development in the Emmett area will continue as Emmett increasing serves as a bedroom community to Boise and as a retirement destination. To this point, few structures have been lost to wildland fires. There has been a trend of increasing numbers of ignitions in the last few years. Increasing development in the dry grasslands will put more homes at risk to loss.

Priority Areas: The urbanizing areas to the north, south and east sides of the district are at the greatest risk to loss from wildland fires. In 2007 the fire district signed a contract with Gem County Commissioners to provide extrication services for the entire county. Our goal will be to replace the old extrication truck with a new one in the near future.

Effective Mitigation Strategies:

- Grants - Apply for a Red Zone Grant to map out hazards in the district.
- Education - A program that stresses the importance of maintaining defensible space and reducing home ignitability would significantly reduce the potential for loss to wildland fire. Home survivability in flashy fuels such as those that dominate the district can be greatly enhanced by taking a few simple precautions.

Top Resource Priorities:

- Sub Station: - Build a new substation at the intersection of Butte Road and Van Dussen Road to house a tender truck and a pumper truck. This gives a better fire rating to homes on the Bench and quicker response time to wildland fires on Squaw Butte.
- Build onto the existing station on 3rd street to relieve crowding and to allow space for the ladder truck in town instead of at station # 2 in Letha.

Equipment:

- The department is in the need of an additional heavy brush engine. This need will continue to increase as more homes are built in the flammable wildland interface.
- A heavy extrication truck which would carry a 6,000 pound cascade system, extrication equipment, and scene lighting

Training:

Continue to train veteran personnel as well as new recruits in order to further advance the district.

Cooperative Agreements:

Gem County Fire Protection District # 1 has cooperative agreements with the surrounding Federal, State, and Rural departments. In addition, Gem County Fire Protection District # 1

is a member of the Snake River Valley Fire Chief's Association. Mutual aid agreements are in place with the following entities:

- Idaho Department of Land
- Lower Snake River (Boise) Bureau of Land Management
- Idaho National Forest Service
- Star RFD (Ada County)
- Middleton RFD (Canyon Co.)
- City of Emmett Fire Department

The good working relationships between Federal, State, and Volunteer organizations has been instrumental in providing fire suppression resources for both structural and wildland fire fighting.

#### Future Considerations:

Responsible officials may find it useful to work with emergency response personnel to establish road and building codes that reduce home ignitability and require minimum road construction standards to accommodate emergency vehicle traffic. The town and department may also consider developing a prevention campaign and a more restrictive burn season.

#### Current Resources:

##### Emmett Station # 1

- 2009 Ford Expedition, Command Vehicle
- 2009 Kenworth, Water Tender, 500gpm- 3,000 gallon tank
- 2004 Ford 4x4 F450, Brush Truck, 18hp-300 gallon tank
- 2001 Pierce International 4x4 Structural Pumper, 750gpm w/830 gallon tank
- 2002 Ford 4x4 F350, Extrication Unit
- 1989 Chevy 4x4 CK3500, Brush Truck, 18hp-300 gallon tank
- 1998 Pierce International Class A Structure Truck, 1,250gpm w/1000 gallon tank

##### Letha Station # 2

- 1985 Hahn 75' Ladder Truck, 1,200 gpm Master Stream
- 1993 Freightliner, Water Tender, 500 gpm w/2,500 gallon tank
- 1993 Freightliner, Water Tender, 500 gpm w/2,500 gallon tank
- 1985 Ford F700, Wildland Truck, 500 gpm w/1200 gallon tank
- 2001 Dodge 4x4 1 Ton Light Brush, 18hp w/300 gallon tank
- 2006 Pierce International 4x4 Class A Pumper, CAFA, 1,000 gpm w/750 gallon tank
- 1993 Pierce International Class A Pumper, 1,000 gpm w/750 gallon tank
- 1993 Chevy 4x4 3500, Utility Bed

#### Most effective mitigation activities for the future:

- Adoption of building codes that reduce home ignitability and improve defensible space.
- Continued education of homeowners as to the hazard of wildland interface living.
- Additional heavy brush truck for quicker response.

- Increase in prevention program, including closer coordination of the issuance of burn permits during the closed fire season.
- Emmett has been experiencing an increase in number of ignitions as well as an increase in development. These two factors are leading to increases in the number of near misses. Establishment of permanent firebreaks may be considered in areas of high resource value or in areas with frequent fires, such as along Highway 16.

**Emmett Fire Department:** Shannon Crays, Fire Chief, 231 South Washington, Emmett, ID 83617; 208 365-6055; [efdchief@qwestoffice.net](mailto:efdchief@qwestoffice.net)

Emmett Fire Department provides fire rescue and non transport basic life support medical services for the City of Emmett. The department provides services to approximately 6,800 citizens, on about 3.5 square miles of urban area. Emmett fire responds with 19 paid per call volunteers and a full time fire chief. As our community has expanded so has the responsibility of the fire service. Our training, scope and standards have expanded to include structural and wildland firefighting, rescue and extrication, rope rescue, Hazardous Materials Operations and Decon. Emmett fire averages 95 responses a year with 16 paid per call volunteers and 1 full time chief. The average response time is 9 minutes.

**Current Department Resources:**

- 2009 Pierce Contender 1,250 gpm, 1,000 gallon tank, class A & B foam
- 2004 Pierce Contender 1,250 gpm, 1000 gallon tank, Class A foam, Fire/Rescue
- 1994 Pierce Saber 1,250 gpm, 750 gallon tank, Class A foam
- 1996 Ford 4X4 Wildland Type 6, 50 gpm, 300 gallon tank
- 1999 Chevrolet Tahoe, Command Vehicle
- 2006 Haz-Mat Trailer, Level B, Decon/Support, Rehab
- Mobile Air Support Trailer SCBA 4,500 PSI

**Gem Fire District #2:** Jim Heikes Chief 208-584-3487 cell 208-369-6539  
[gem2chief@speedyquick.net](mailto:gem2chief@speedyquick.net) ; P.O. Box 70; Sweet, Idaho 83670

District summary: 35 firefighters

**Current Resources:**

**Sweet Station**

- 1988 Grumman Structural Engine 600 gallons w/1,500 gpm pump
- 1995 Ford F350 Type 6 Wildland Engine 250 gallons @ 150 gpm
- 1974 Kenworth Tender 3,200 gal w/125 gpm hi press; 290 gpm portable
- 1979 Toyota Type 3 Wildland Engine 800 gallon @ 250 gpm
- 1972 Toyota Type 3 Wildland Engine 1,200 gallons @ 390 gpm
- 1997 Ford Expedition Command Vehicle

**Ola Station**

- 1986 Mack Tender ,000 gallons @ 600 gpm
- 1981 Ford Tender 1,400 gallons @ 150 gpm
- 1958 Diamond T 6
- x6 Type 3 Wildland Engine 750 gallons @ 250 gpm

- Wildland Engine 800 gallons @ 250 gpm 1979 IHC 4x4 Type 3
- 4x4 Type 6 Wildland Engine 200 gallons @ 100 gpm 1988 Chevrolet 1 ton
- Type 6 Wildland Engine 300 gallons @ 150 gpm 1998 Ford F450 4x4
- gallons @ 1,000 gpm 1962 Ford F850 Structure 600

**Boise District BLM Updated Information**

The District’s primary station is located in Boise, where 3 crews, with 2 engines per crew are based, along with both helicopter and fixed-wing aircraft resources. One of the three Boise crews is stationed during the day at Boise Fire Station #2 or at North Ada County Fire and Rescue Station #3. Additionally, the district has out stations at Bruneau, Hammett, and Middleton Fire Department. Each facility is staffed by one crew, with two engines and a command vehicle (8 people). Crews work five eight-hour days but are on call 24-hour, 7-day per week basis from mid June to mid September. A dozer also is typically based at Bruneau, and the District’s other heavy equipment is based in Boise.

BLM crews are neither trained nor equipped for structure suppression. Primary protection responsibilities are on public land throughout southwest Idaho. The BLM responds to fires originating on public lands and those on private land that threaten public land. Additionally, through mutual aid agreements with local fire departments, they will provide assistance when requested on wildland fires.

The BLM does not provide formal EMT services. The crews are trained in first-aid, and some staff members have EMT and first-responder training, but this is not a service we provide as part of our organization.

The district encompasses a broad spectrum of resources at risk, including recreation sites, power lines, wildlife habitat, wilderness study areas, wild horse management areas, historic districts, cultural and archaeological sites, and a range of vegetation types, from rare plant species to sagebrush and timber resources.

**Personnel:** The fire program staff totals approximately 125 individuals, including 18 permanent employees, 40 career-seasonal employees who work up to nine months each year, and 65 seasonal employees on staff from roughly June to September. These are all paid staff members trained in wildland fire, but not in structure protection.

**Mutual Aid Agreements:** The BLM has an interagency working relationship with the US Forest Service (Boise National Forest and Payette National Forest) and the Idaho Department of Lands and the crews are dispatched on a closest-forces concept to public lands. Additionally, the BLM has mutual aid agreements with approximately 50 local fire departments.

### **Top Operational Priorities:**

- **Training:** Increasing the amount and level of training for and with partner community fire departments
- **Increasing Interagency Effectiveness:** As WUI expansion and climate change continue to affect wildland fire response, interagency response becomes more important in initial attack success. This requires training, pre-planning, and after action review by all cooperators

### **Primary Operational Challenges:**

- Continued development of wildland-urban interface areas across the district
- Communications and coordination with current, new, and developing community fire departments and working with them to stay abreast of communication and technological developments so that we can continue and improve working together effectively at the fire scene
- Internally, an operational challenge is to have sufficient and appropriate staff available throughout the year to foster partnerships with local departments and facilitate continued and improved coordination, training, communications, prevention, and other joint efforts with our partners across the district
- Our effectiveness in addressing these challenges will largely hinge on funding available for the fire program and its various elements

**Structure and People** Prevention/mitigation proposals that will seek fund through the BLM initiative and other potential sources

#### **#1 Wildland Fire Interpretive Signs and/or Fire Danger Rating Signs**

- **Goals and Objectives:** Signs will educate the public about all aspects of wildland fire including suppression, prevention, wildland fire ecology, fuels treatments, and mitigation for personal and public property
- **Responsible Organization:** BLM, USFS, West Central Highlands RC&D, and any willing local agencies
- **Action Items:** Organizations will begin working on funding for specific projects. As funding becomes available signs will be developed

#### **#2 Development and placement of firewise landscaping gardens**

- **Goals and Objectives:** The demonstration gardens will show people specific examples of landscaping materials and ideas which can be used to make homes and other structures more resistant to wildland fire
- **Responsible Organization:** BLM, USFS, West Central Highlands RC&D, and any willing local agencies
- **Action Items:** Organizations will begin working on funding for specific projects. As funding becomes available signs will be developed.

#### **#3 Private Land Hazardous Fuels Treatment**

- **Goals and Objectives:** To reduce hazards associated with wildland fuels on private land. Data from ongoing and planned hazard assessments will be used to determine priorities, as well input from local fire departments, elected officials and homeowners. The objective will be to make homes and other structures more resistant to wildland fire.

- Responsible Organization: Local Fire Departments, elected officials, homeowners, BLM, USFS, West Central Highlands RC&D, and any willing local agencies
- Action Items: Completing assessments, developing specific projects and implementing specific projects

**Boise District Call Signs 2008**

<b><u>Call #</u></b>	<b><u>Name</u></b>	<b><u>Title</u></b>
Chief 1	Andy Delmas	FMO
Division 1-1	Len Spain	AFMO
Division 1-2	Steve Acarregui	Fire Operations Manager
Division 1-3	Lance Okeson	Fuels Program Coordinator
Division 1-4	Bob Narus	Prevention/Information

**Investigation/Prevention**

Investigation 1	Daily-Investigator
Investigation 2	Daily-Investigator
Prevention 1	Daily- Prevention Technician

**Battalion/FOS Group**

Bat 10	Dan Betts	FOS North/Owyhee
Bat 20	Brad Bolen	FOS Boise/Four Rivers
Bat 21	Dennis Konrad	FOS Seasonal
Bat 30	Todd Floyd	FOS South/Bruneau
Bat 40	Joe Rogan	FOS/Helitack Supervisor
Bat 50	Josh Renz	FOS Fuels, Boise

**Unit Superintendents**

Supt 11	Middleton	Daily Supervisor
Supt 15	Perms	Daily Supervisor
Supt 21	Unit A	Daily Supervisor
Supt 22	Unit B	Daily Supervisor
Supt 23	Unit C	Daily Supervisor
Supt 31	Hammett	Daily Supervisor
Supt 32	Bruneau	Daily Supervisor

\*Superintendents will be qualified as a TFLD and ICT4 or use Chase as Designator

**Helitack**

HT41	Chase Truck	Yellow Chase
HT42	Chase Truck	Blue Chase
HT43	Chase Truck	White Chase

HT44

Chase Truck

Yellow Chase

**Fuels**

Fuels Chase 51

Fuels Chase 52

<u>Call #</u>	<u>Resource</u>	<u>Location</u>
E1411	Engine Type IV	Middleton
E1412	Engine Type IV	Middleton
E1415	Engine Type IV	Perms
E1416	Engine Type IV	Perms
E1421	Engine Type IV	Unit A Boise
E1422	Engine Type IV	Unit A Boise
E1423	Engine Type IV	Unit A Boise
E1424	Engine Type IV	Unit B Boise
E1425	Engine Type IV	Unit B Boise
E1426	Engine Type IV	Unit B Boise
E1427	Engine Type IV	Unit C Boise
E1428	Engine Type IV	Unit C Boise
E1429	Engine Type IV	Unit C Boise
E1431	Engine Type IV	Hammett
E1432	Engine Type IV	Hammett
E1433	Engine Type IV	Hammett
E1434	Engine Type IV	Bruneau
E1435	Engine Type IV	Bruneau
E1436	Engine Type IV	Bruneau
E1451	Engine Type IV	Boise
E1452	Engine Type IV	Boise
E1641	Engine Type VI	Helitack

**Heavy Equipment**

DZ1280	Dozer Type II, D6	Boise
DZ1281	Dozer Type II, D6	Boise
DZ1182	Dozer Type I, D6R	Boise
WT1290	Water Tender Type II/3500 gal	Boise
WT1291	Water Tender Type II/3500 gal	Boise
FT1199	Fuel Tender	Boise

<b>Air Attack</b>	4SA	Air Attack Base, Boise
<b>Helicopter</b>	65H (Type II Helicopter)	Air Attack Base, Boise

**The district is divided into 3 areas. North, Middle, and South**

- 1- all resources stationed in the North will have a 1 designator
- 2- all resources stationed in the Boise Yard will have a 2 designator
- 3- all resources stationed in the South will have a 3 designator
- 4- all resources assigned to Helitack will have a 4 designator
- 5- all resources assigned to Fuels group will have a 5 designator
- 8- all resources assigned to the Heavy equipment group will have a 8 designator

## **Idaho Department of Lands**

**District Size:** The Southwest Idaho Forest Protective District (SWIFPD), administered by the Southwest Supervisory Area Office, includes approximately 400,000 acres of state, federal, and private lands in Southwest Idaho. Approximately half of the District is private ownership. The District is divided into two (2) fire management areas; North and South.

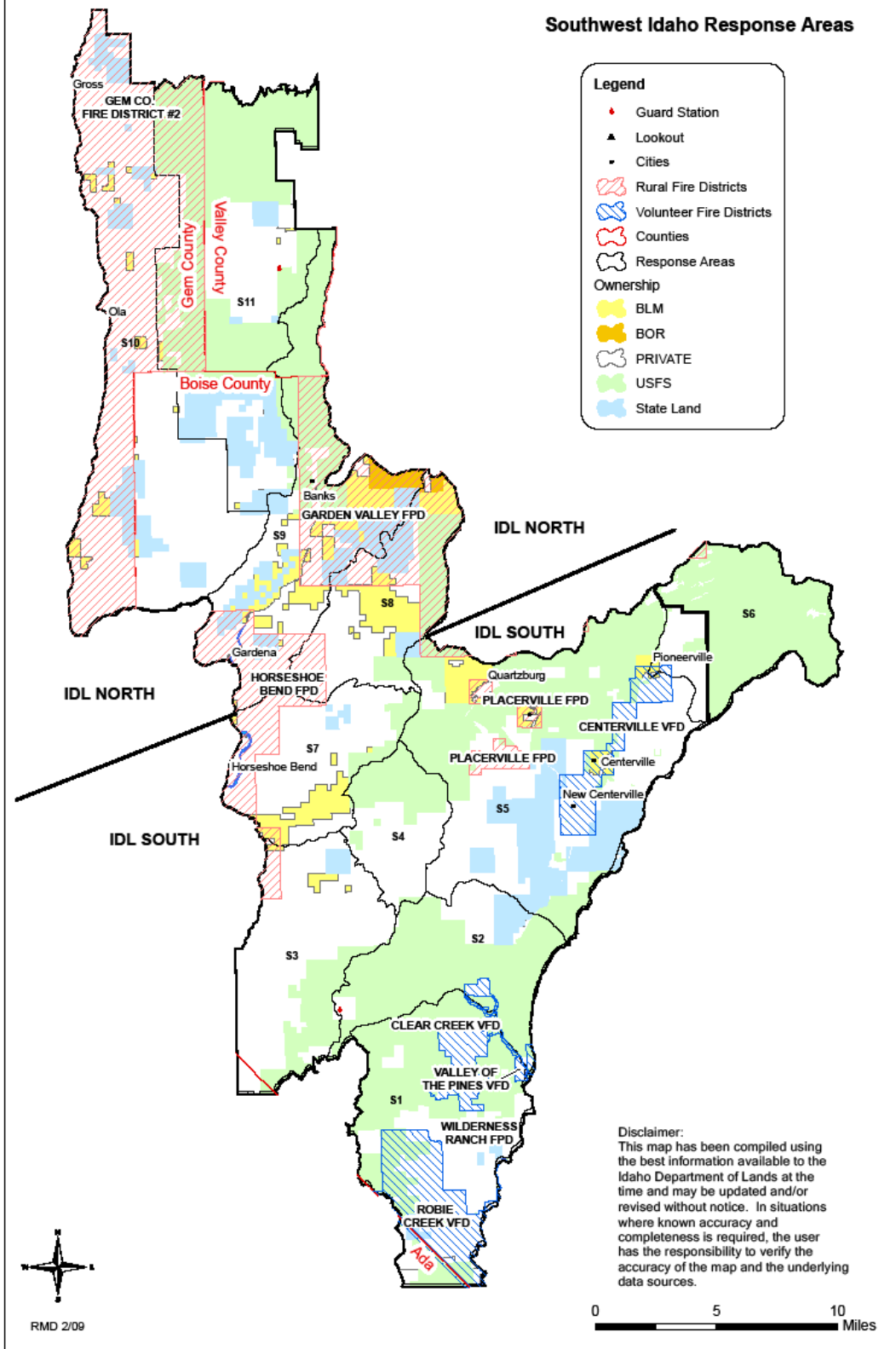
**Description:** The SWIFPD meanders through portions of the west side of the Boise National Forest and joins portions of the east boundary of the Boise District BLM along the Sweet/Ola Highway. The southern border of the district includes Shaw Mountain and the Robie Creek area west of Highway 21. The northern portion of the district extends to Third Fork and Sage Hen Reservoir, east of the Sweet/Ola Highway.

Elevations within the district range from 2,600 feet in the Squaw Creek drainage to nearly 7,800 feet on Wilson Peak. These geographic areas are defined by closed canopy timber, ponderosa pine-grass understory, sagebrush-grass and urban-rural interface. Forested areas are dominated by ponderosa pine and Douglas-fir on drier sites, while grand fir and alpine fir occupy cooler sites.

**Personnel:** The District fire program totals 23 individuals, including eight (8) permanent employees and 15 seasonal employees who may work up to eight months each year. Additional fire personnel and equipment may be available from other IDL Administrative Areas across the state and through the Boise Dispatch Center.

# Department of Lands

## Southwest Idaho Response Areas



**Mutual Aid Agreements / Unified Efforts:** The SWIFPD provides wildland fire protection for portions of the Southwest Supervisory Area and portions of the Boise National Forest. In addition, the Idaho Department of Lands (IDL) is party to the statewide Cooperative Fire Protection Agreement between USDI-BLM (Idaho), USDI-NPS (Pacific West Field Area), USDI-BIA (Portland Area), USDI-FWS (Pacific Region), USDA-FS (Intermountain and Northern Regions) and the Southern Idaho Timber Protection Association (SITPA).

Within the SWIFPD, mutual assistance agreements have been entered into with Centerville VFD, Clear Creek VFD, Garden Valley FPD, Gem County Fire District #2, Horseshoe Bend FPD, Placerville FPD, Robie Creek VFD, Valley of the Pines Thorn Creek VFD, and Wilderness Ranch VFD. Additionally, IDL, through the Southwest Area Office, has local certification agreements with approximately 50 Fire Service Organizations (FSO).

Interagency and mutual agreements define roles and responsibilities of each party, how the parties will interface with each other, and how responsibilities for costs will be addressed. The IDL has an interagency working relationship with the US Forest Service (Boise National Forest), Boise District BLM, and SITPA.

**Operational Priorities:**

1. **Partner** with communities, home and landowners to identify what actions can be taken to mitigate potential wildland urban interface losses, and identify financial and technical assistance opportunities.
2. **Identify** how the parties will work together when the wildland fire impacts another's protection or jurisdictional responsibility.
3. **Establish** agreements and/or local operating plans to identify roles and responsibilities prior to the wildland fire. Assist in increasing the amount and level of training for and with partner community FSO's.

The primary objective is to provide a cost effective, initial attack suppression effort on all wildland fires within the SWIFPD. Ignitions in the District follow a distinct pattern. High ignitions areas include populated areas, travel corridors, and areas having high lightning densities.

Risk to firefighters and public safety, fire behavior, and availability of resources will dictate the strategies that will be used. IDL will engage local resources (FSO's, law enforcement, disaster services, etc.) in the planning of strategies and tactics for community protection and values at risk.

**Operational Procedures:** All District resources are dispatched through the Boise Dispatch Center. IDL is an initial attack, full suppression organization. Boise Dispatch coordinates and monitors interagency resource response based on closest forces and values at risk. Fire suppression crews work five (5) eight hour days providing seven (7) day coverage on the District from June to mid October. All firefighters are on call 24-hours.

Fire Information, Prevention, and Mitigation programs are administered by District fire staff.

**Capabilities:** IDL has no capability or responsibility to perform structure fire

suppression. Landowners have the responsibility to determine structure fire suppression availability within their communities.

**Call Signs:**

<u>Call #</u>	<u>Name</u>	<u>Title</u>
Last Name	Dan Christman	Fire Warden
Clear Text	Matt Hicks	Assistant Warden
	Rick Finis	Assistant Warden

**Investigation:**

Investigation 6	Daily-Investigator
-----------------	--------------------

<u>Call #</u>	<u>Resource</u>	<u>Location</u>
E6F06	Engine Type VI	Southwest Area Yard
E6F25	Engine Type V	Southwest Area Yard
E6F12	Engine Type VI	Wilderness Ranch
E6F17	Engine Type V	High Valley GS

**Engine Crews:** Comprised of an Engine Boss and two (2) firefighters.

**Hand Crews:**

Crew 6	6 Person Crew	Southwest Area Yard
Crew 38	SICI / 20 Person	SICI Facility
Crew 39	SICI / 20 Person	Idaho City

**Aircraft/Aviation:** IDL’s aviation resources are contracted annually and are available from late June through October. They are used as state wide resources depending on availability Helicopters include a Bell 212HD with a 7-member helitack crew staffed at Coeur d’Alene along with a Long Ranger and 6-member helitack crew staffed at Craigmont. The crew’s primary mission is initial attack on fire starts, particularly in the high-priority areas within state protection. Aviation resources and crews also provide interagency support on extended attack and project size fires when available. There are additional helicopter resources equipped for fire missions that are available on a call-when-needed (CWN) basis.

Fixed wing resources include seven single engine air tankers (SEAT’s) stationed at McCall (2), Coeur d’Alene (3), and Grangeville (2) and are shared resources depending on availability.

The majority of aviation resources utilized by the District for local fire suppression are available through Boise Interagency Logistic Center (Boise Dispatch) contracted by the Boise National Forest and Boise District BLM. The Bureau of Fire Management staff in

Coeur d'Alene provides state wide support in fire business, resource and incident management, and interagency fire cache operations.

**Lookouts:** The District utilizes five (5) interagency lookouts providing wildland fire detection:

Squaw Butte (north of Emmett)

Tripod (north of High Valley)

Sunset (northeast of Idaho City)

Scott Mountain (east of Garden Valley)

Silver Creek (northeast of Crouch)

**Programs:** In cooperation with the Forest Service, State and Private Forestry, the District administers the Federal Equipment Personal Property program and the Volunteer Fire Assistance program. These programs provide FSO's with surplus fire apparatus and funding for required equipment and services. The intent is to adequately train and equip FSO's to safely initial attack fires within their response areas keeping fires small and costs to a minimum.

The District also administers the required procedure for signing up and paying city, county, and rural FSO's throughout the local area for responding to fires outside their response areas when needed.

District fire staff assists with hazardous fuels treatment/mitigation planning programs through local county wildland fire mitigation committees on non-federal lands.

**Definitions:** The following are defined:

**Wildland Fire Protection:** Protecting natural resources and municipal watersheds from damage from any fire that occurs in the wildland. State, tribal and federal forest or land management agencies normally provide wildland fire protection.

**Structure Protection:** Protecting a structure from the threat of damage from an advancing wildland fire. This involves the use of standard wildland protection tactics, control methods, and equipment, including fire control lines and the extinguishments of spot fires near or on the structure. Structure protection can be provided by the FSO. Wildland fire protection agencies will make every effort to control the wildfire to keep it away from the structure.

**Structure Fire Suppression:** Interior or exterior actions taken to suppress and extinguish a burning structure or improvement associated with standard fire protection equipment and training. This is the responsibility of local FSO entities.

**Accomplishments after the 2004 Fire Plan:**

### Forest Service Completed Projects

- Mesa Crossing Timber Sale -170 acres of commercial harvest, non-commercial thin and burning of landings
- North Kennedy Cottonwood Stewardship is on-going 75% completed
- Mill Creek Prescribed Underburn -Treated 1,670 acres using prescribed burning across the landscape reducing wildfire risk
- Ola Summit Sanitation –Treated 250 acres of commercial harvest, non-commercial thin and burning of landings. Propose to mulch the non-commercial thin areas in 2009
- Mesa North and South Timber Sales -330 acres of commercial thin and shelterwood treatments. Salmon-blading sites for reforestation and burning of landings

### County and Fire District Accomplishments

- County Planning and Zoning adopted a Wildland Interface building/mitigation code
- Ola fire station was completed and occupied in 2005
- City requires year around burning permits

### **WUI Map**

The WUI Map in the original Fire Plan document still adequately represents the area

### **Document Prepared by:**

Name: Russ Manwaring, Aspen M, assisting the West Central Highlands RC&D Council  
Title: Contractor

Adopted: \_\_Lan Smith\_\_\_\_\_, Chair, Gem County Commission

Date: \_\_\_\_\_5/18/2009\_\_\_\_\_