

Idaho Department of Lands Organization Chart

Support Services

DONNA CALDWELL
DIVISION ADMINISTRATOR - SUPPORT SERVICES
BOISE

DAN RAIHA
CHIEF INFORMATION OFFICER
COEUR D'ALENE

KARI KOSTKA
STRATEGIC PLANNING MANAGER
BOISE

RENEE MILLER
MANAGEMENT ASSISTANT
BOISE

DEBBIE BUCK
FINANCIAL OFFICER
BOISE

BRAD LARSON
IT SYSTEMS INTEGRATION ANALYST, SR
BOISE

ELTON KELLY
DATABASE AND APPLICATIONS MANAGER
BOISE

AMY JOHNSON
TECHNICAL WRITER
BOISE

DIANE GRIFFIN
ADMIN ASST 2
BOISE

JAMIE BAKER
FINANCIAL SPECIALIST, SR
COEUR D'ALENE

ANDREW EVANS
LANDS PROGRAM MGR - PROCUREMENT
BOISE

WADE KIMBALL
FINANCIAL MANAGER
BOISE

CHRIS COLLIGAN
IT SYSTEMS INTEGRATION ANALYST
BOISE

DAVID CLOPTON
IT DATABASE ANALYST, SENIOR
BOISE

KELLIE LEBONTE
ADMIN ASST 1
BOISE

DEBBIE GODFREY
FINANCIAL TECHNICIAN
COEUR D'ALENE

SHERRY GROESCHL
BUYER, SENIOR
COEUR D'ALENE

CHERIE WOODWORTH
FINANCIAL SPECIALIST, SR
BOISE

VACANT
FINANCIAL SPECIALIST, SR
BOISE

MIKE MITCHELL
ENTERPRISE CONTENT MANAGEMENT
ADMINISTRATOR (ECM)
BOISE

FRED TOHM JR
IT DATABASE ANALYST
COEUR D'ALENE

VANESSA WILSON
OFFICE SPECIALIST 2
BOISE

PEGGY GRISWOLD
FINANCIAL SPECIALIST - GNA
COEUR D'ALENE

VACANT
BUYER, SENIOR
COEUR D'ALENE

VACANT
FINANCIAL TECHNICIAN, SR
BOISE

JILL YOUNG
FINANCIAL TECHNICIAN
BOISE

RACHEL VERHOEKS
IT SYSTEMS ANALYST
COEUR D'ALENE

RANDALL PHELPS
IT PROGRAMMER ANALYST
BOISE

VICKI TORTORELLI
IT SYSTEMS ANALYST
BOISE

MICHAELLE SANDE
BUYER
COEUR D'ALENE

PATSI SHANDERA
BUYER
BOISE

VACANT
FINANCIAL TECHNICIAN
BOISE

TINA RICHARDSON
FINANCIAL TECHNICIAN
BOISE

DIANNE LANUZA
FINANCIAL SPECIALIST
BOISE

TIM GATES
IT INFRASTRUCTURE MANAGER
COEUR D'ALENE

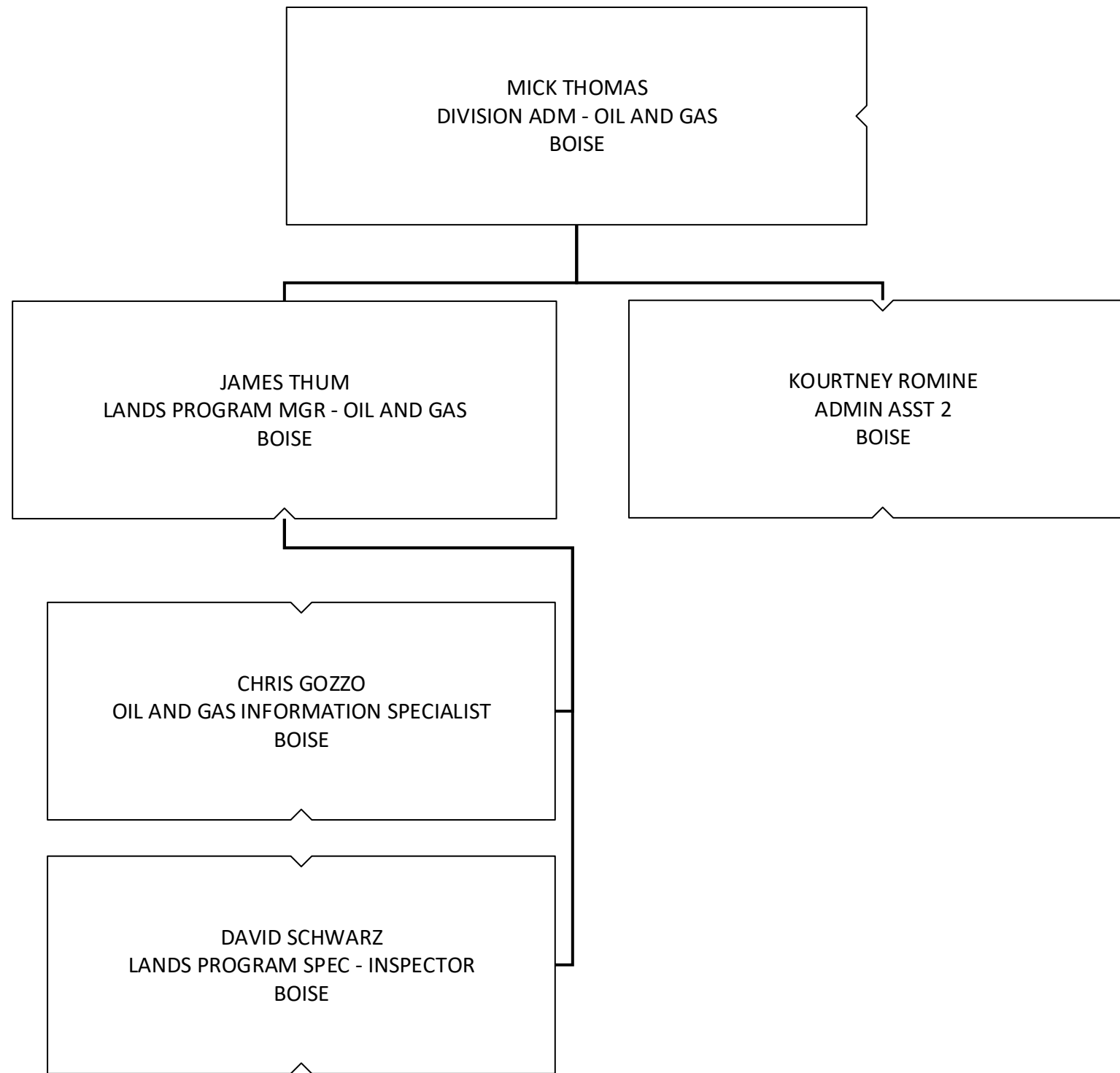
RAY SHAW
IT SYSTEMS COORDINATOR
COEUR D'ALENE

WALT TOWLER
IT SYSTEMS COORDINATOR
BOISE

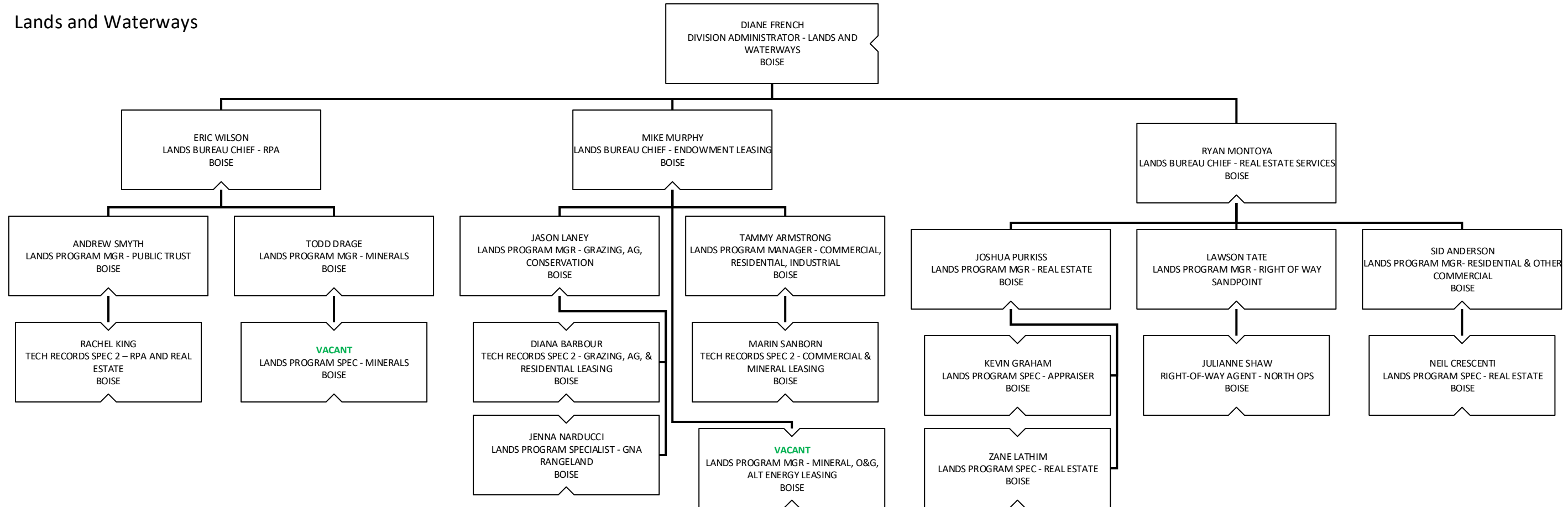
JOHN ZUKOWSKI
IT INFORMATION SYSTEMS TECHNICIAN
COEUR D'ALENE

BRADLEY WIERSMA
IT INFORMATION SYSTEMS TECHNICIAN
BOISE

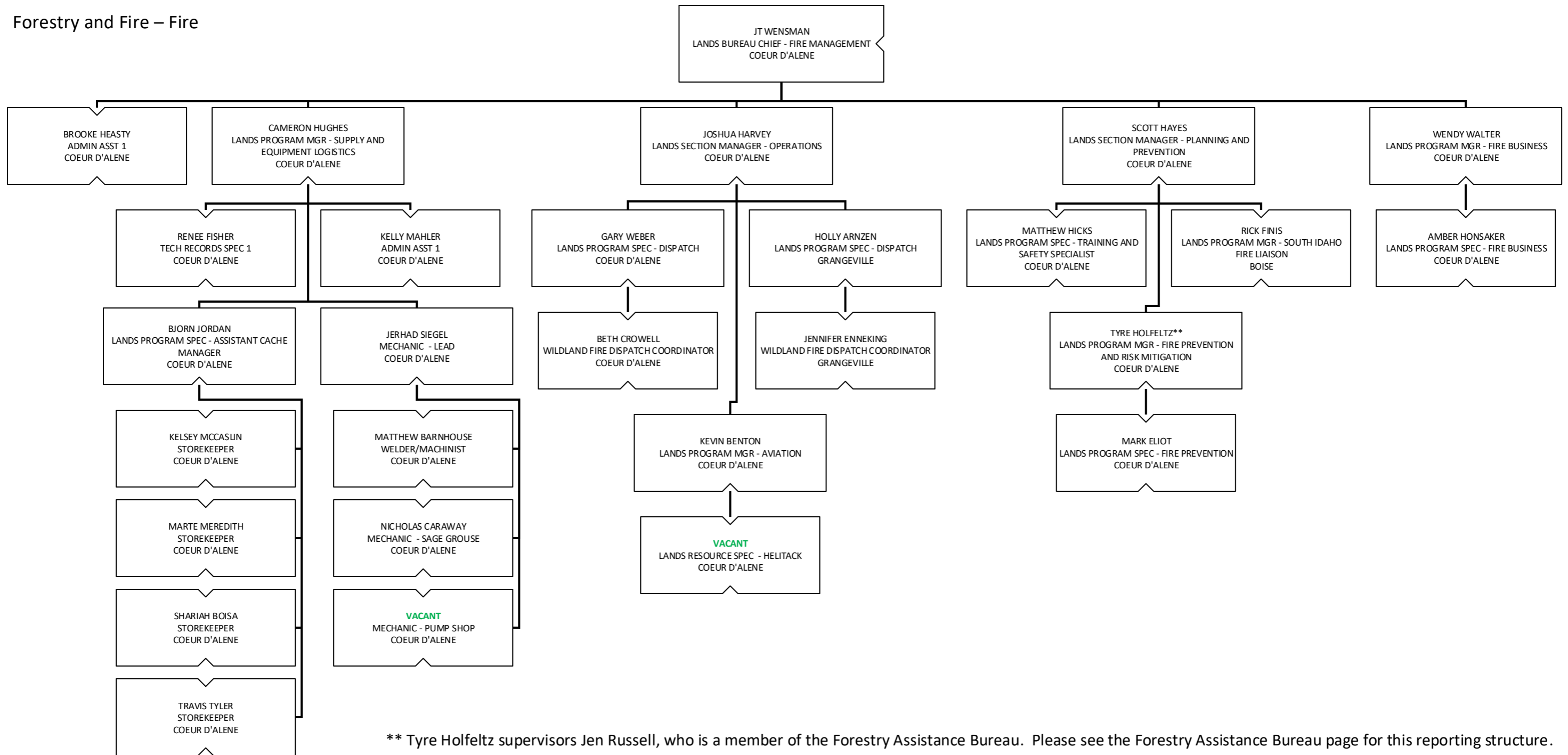
Oil and Gas



Lands and Waterways

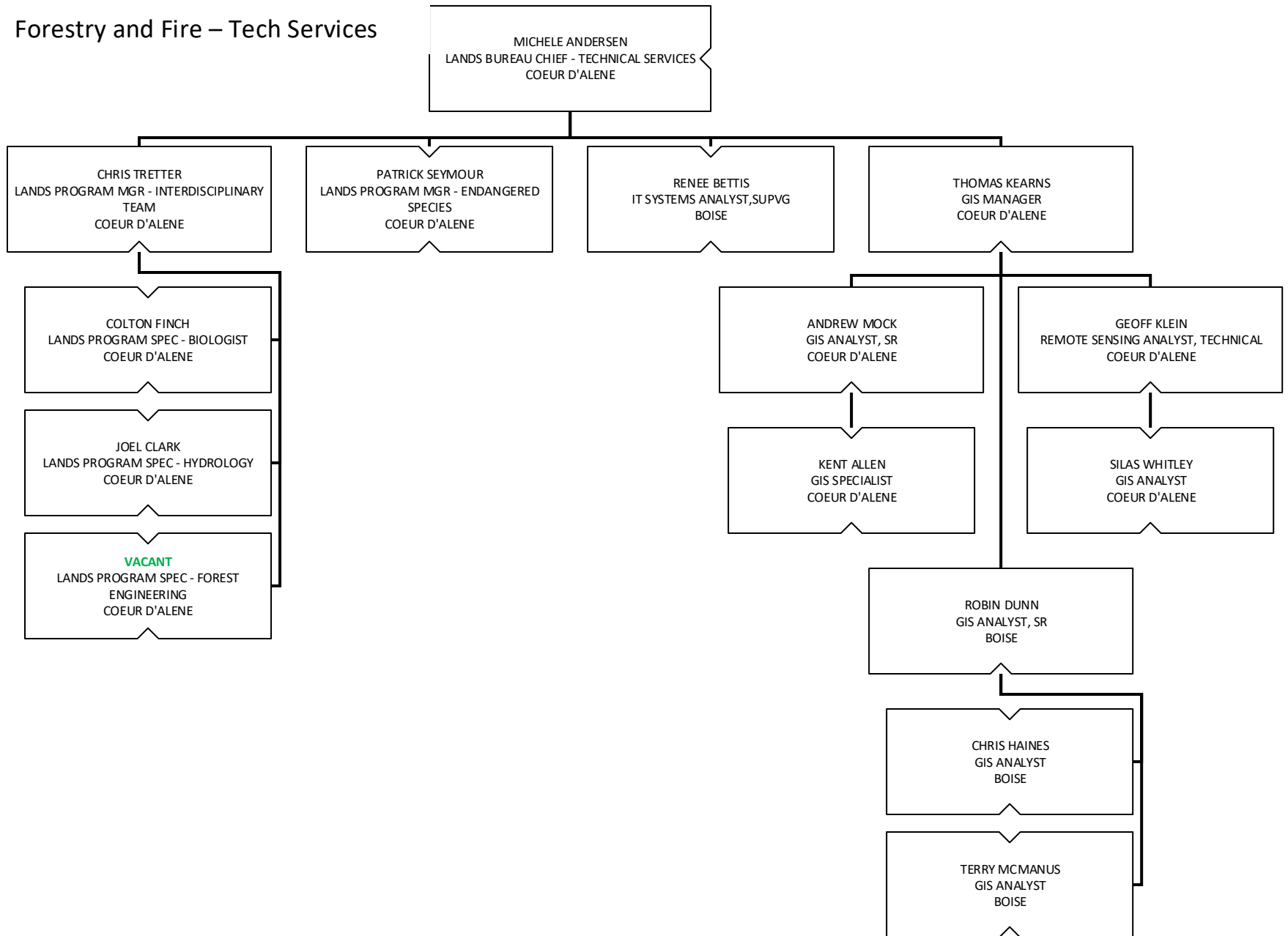


Forestry and Fire – Fire

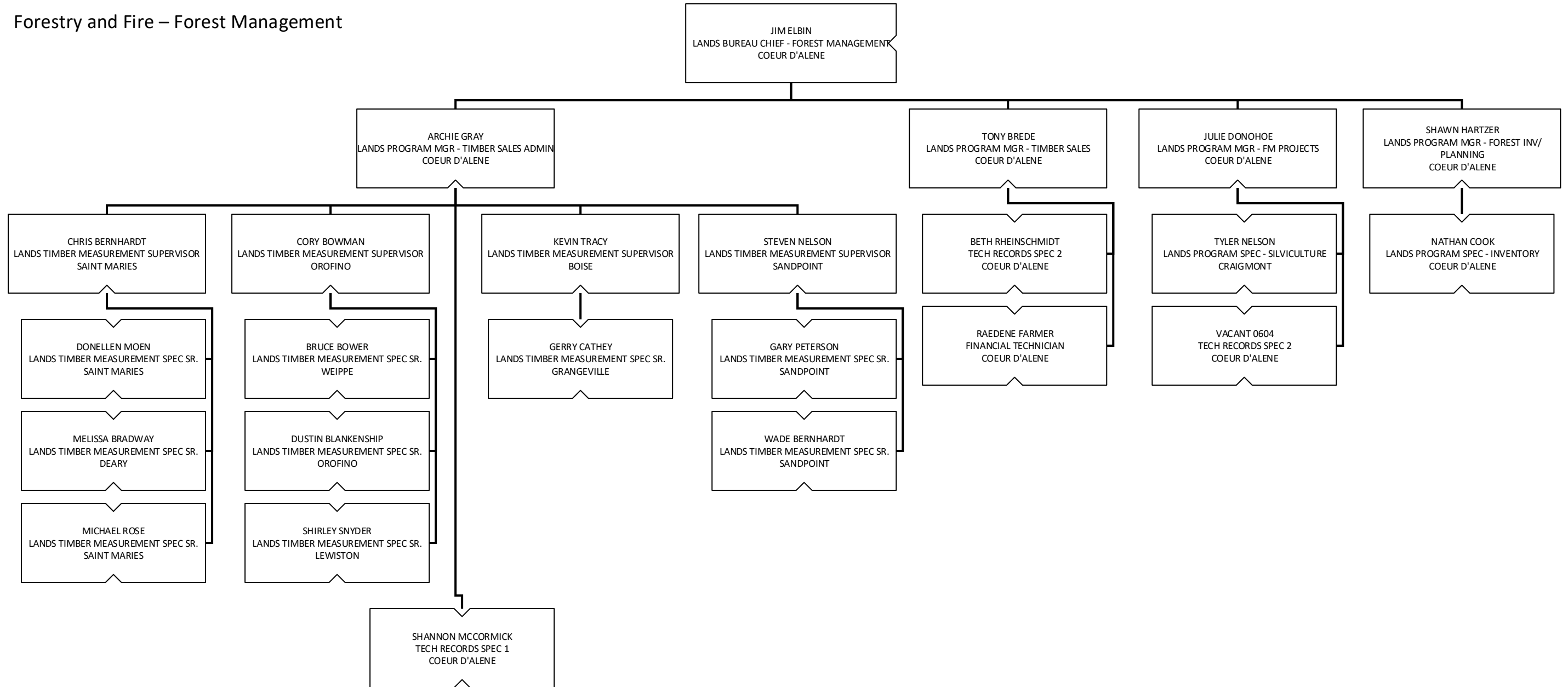


** Tyre Holfeltz supervisors Jen Russell, who is a member of the Forestry Assistance Bureau. Please see the Forestry Assistance Bureau page for this reporting structure.

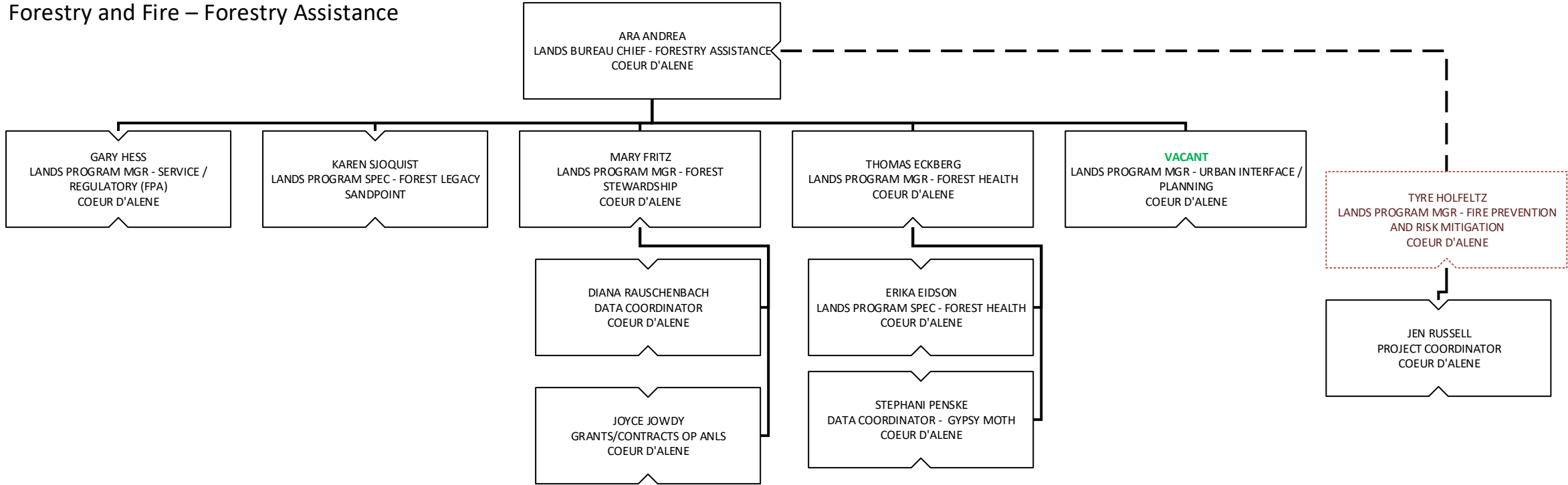
Forestry and Fire – Tech Services



Forestry and Fire – Forest Management

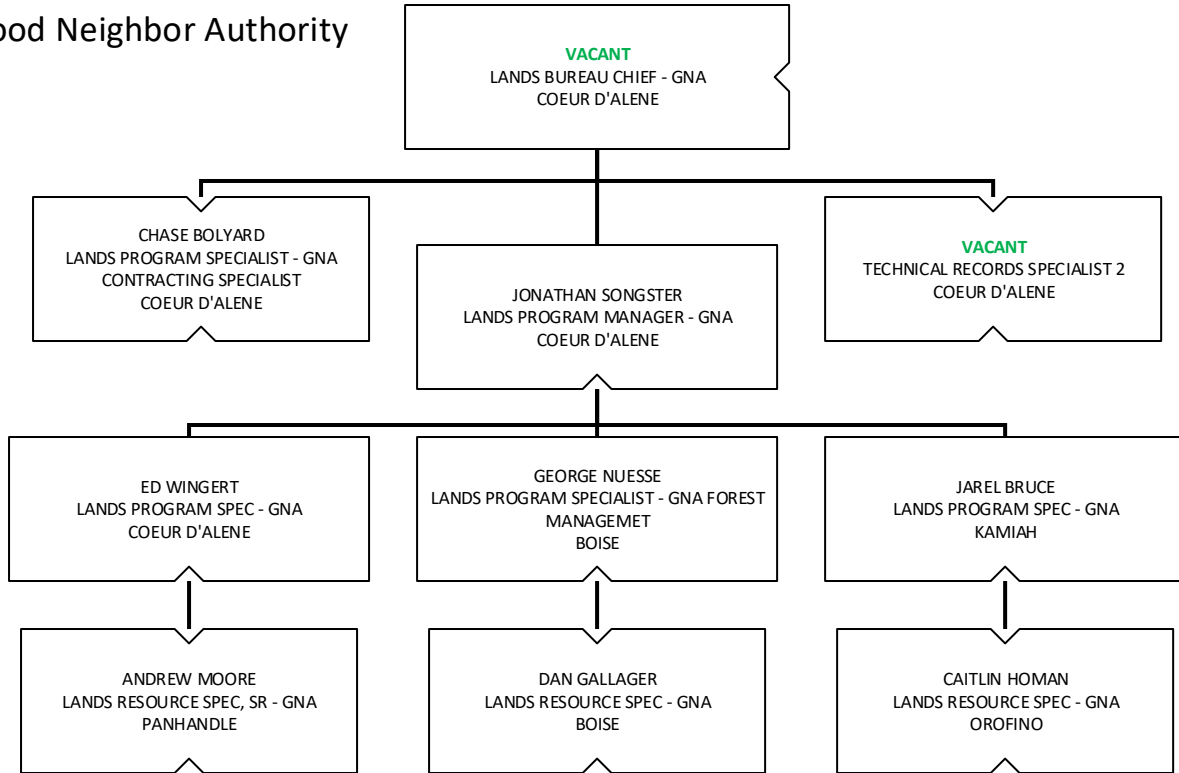


Forestry and Fire – Forestry Assistance



** Jen Russell reports to Tyre Holfeltz who is a member of the Fire Bureau. Jen is a member of the Forestry Assistance Bureau.

Forestry and Fire – Good Neighbor Authority



Priest Lake Supervisory Area

MICK SCHANILEC
LANDS AREA MGR - PRIEST LAKE
COOLIN

DANIEL BROWN
LANDS RESOURCE SUPV - FIRE WARDEN
COOLIN

NICOLE LEE
ADMIN ASST 1
COOLIN

RON DURHAM JR
LANDS RESOURCE SUPV - FOREST
MANAGEMENT
COOLIN

DAVID THORNTON
LANDS RESOURCE SPEC - ASSISTANT FIRE
WARDEN
COOLIN

KEITH HERRINGTON
MECHANIC
COOLIN

JIM NOLEN
LANDS RESOURCE SPEC, SR - FOREST
MANAGEMENT
COOLIN

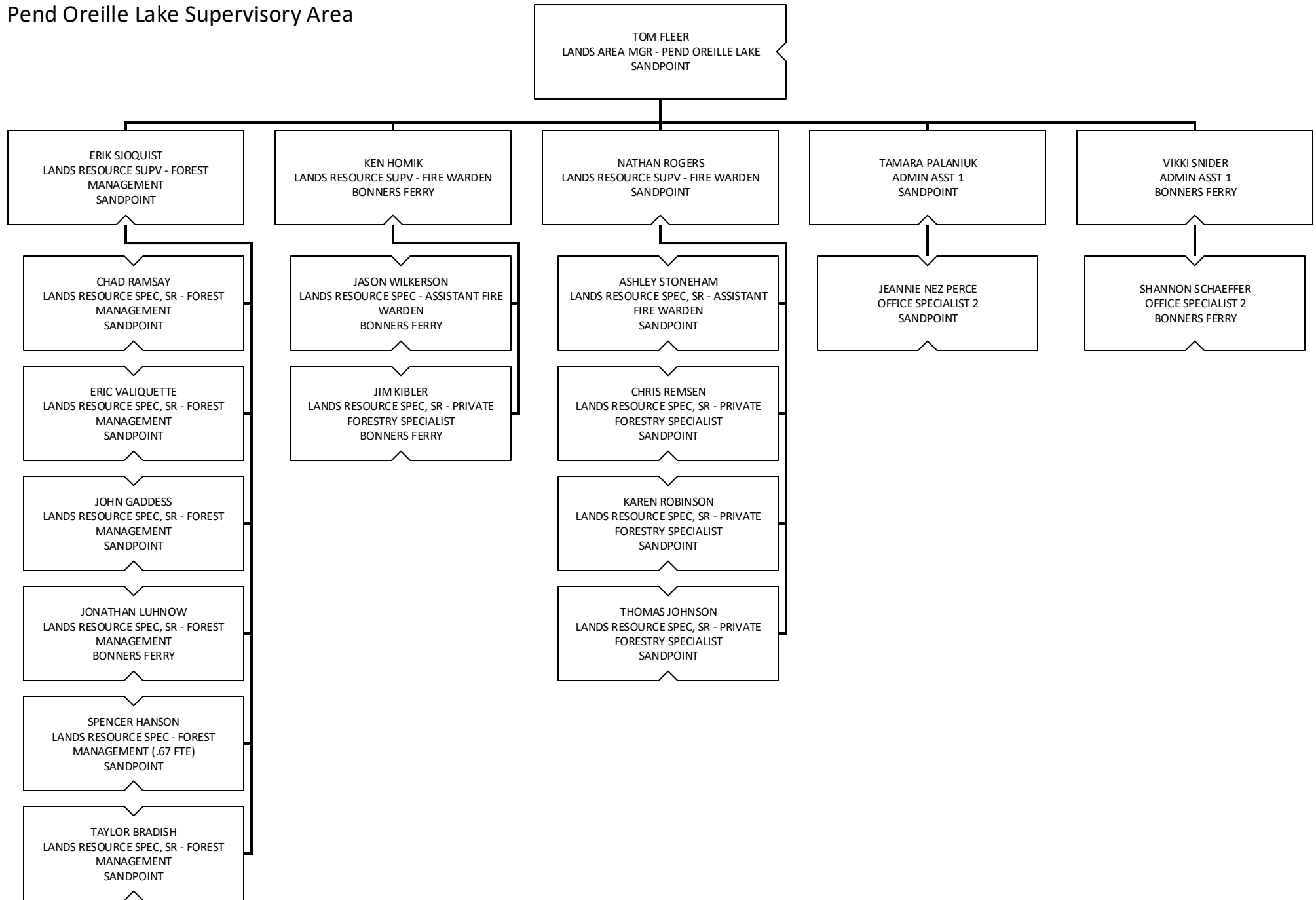
KEITH ZALEWSKI
LANDS RESOURCE SPEC, SR - FOREST
MANAGEMENT
COOLIN

NEAL CARY
LANDS RESOURCE SPEC, SR - FOREST
MANAGEMENT
COOLIN

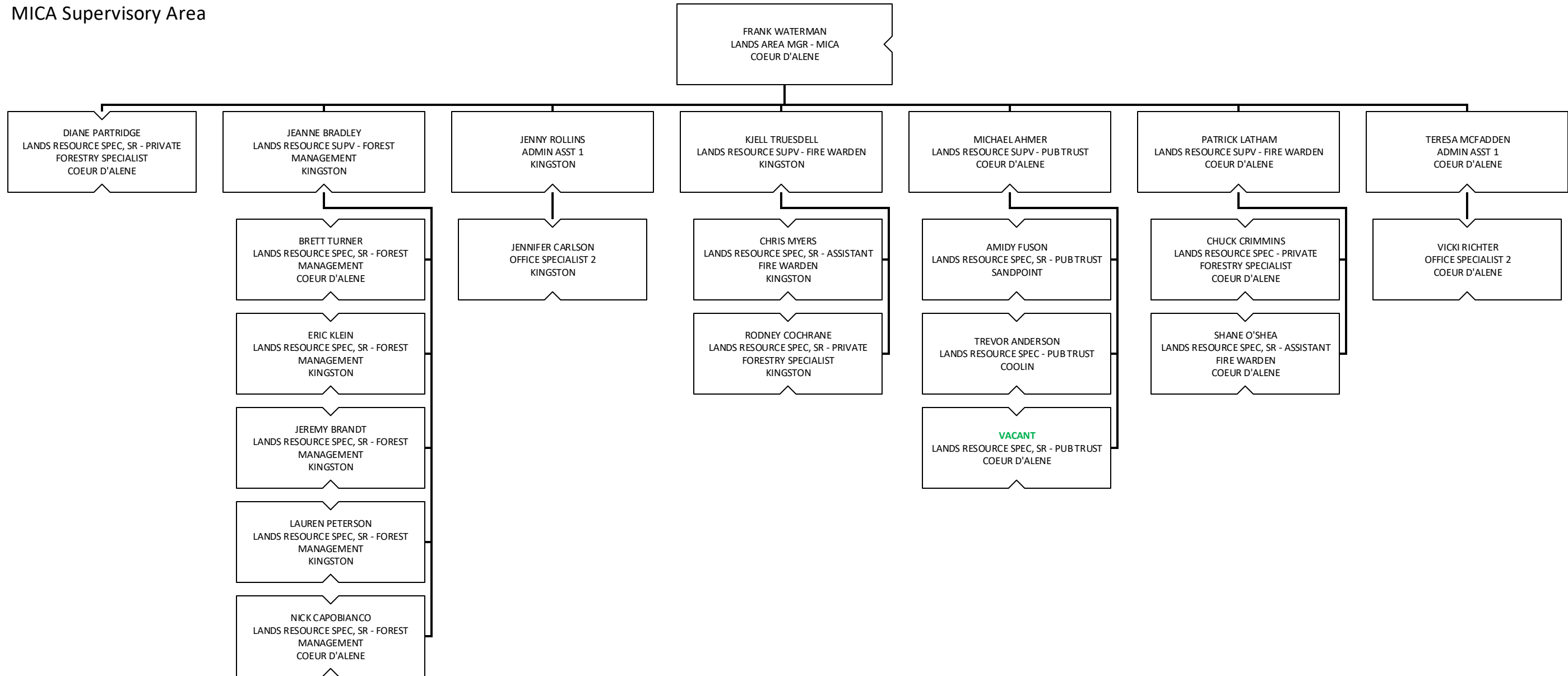
NEIL YOUNG
LANDS RESOURCE SPEC, SR - FOREST
MANAGEMENT
COOLIN

ROBERT FUNK
LANDS RESOURCE SPEC, SR - FOREST
MANAGEMENT
COOLIN

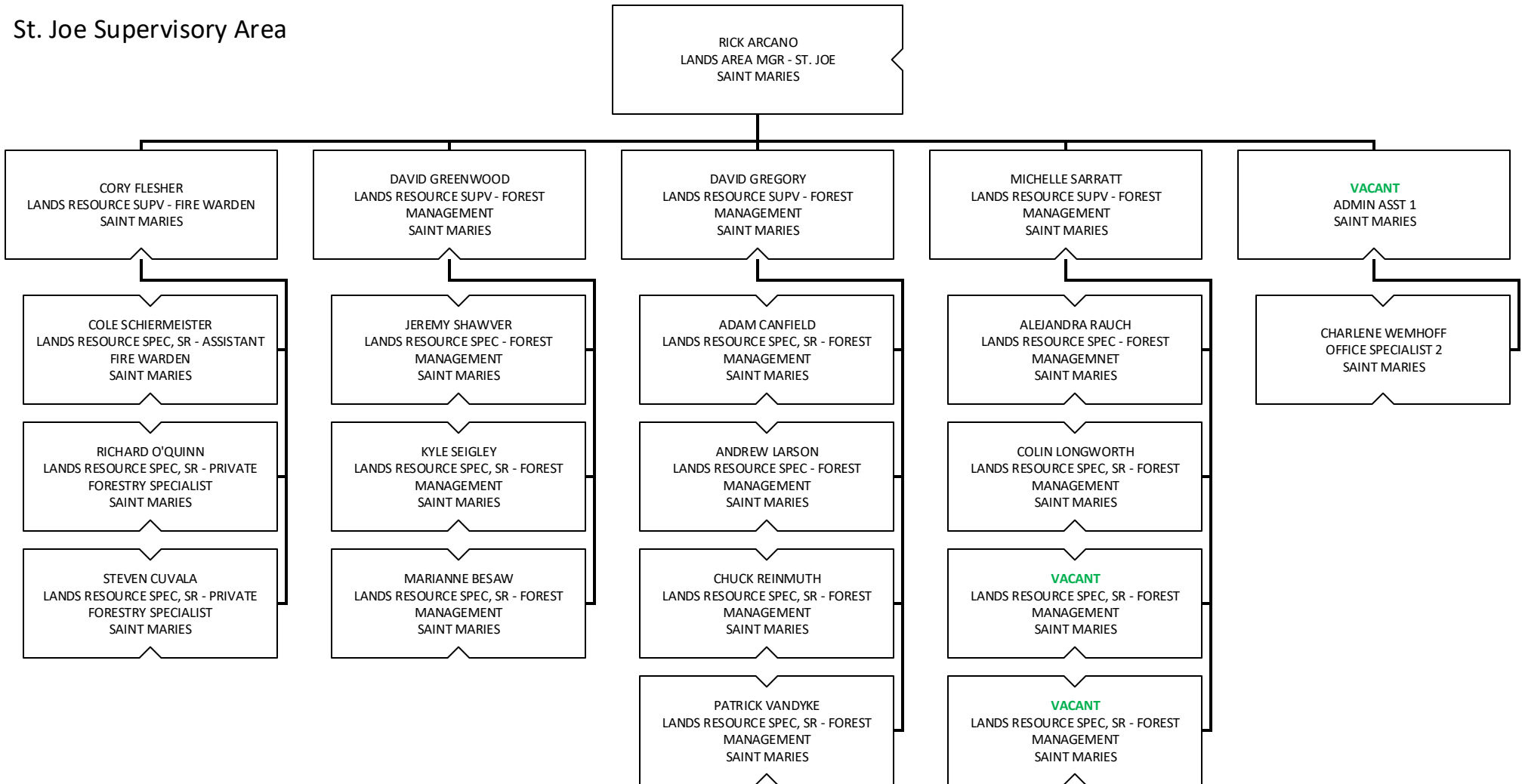
Pend Oreille Lake Supervisory Area



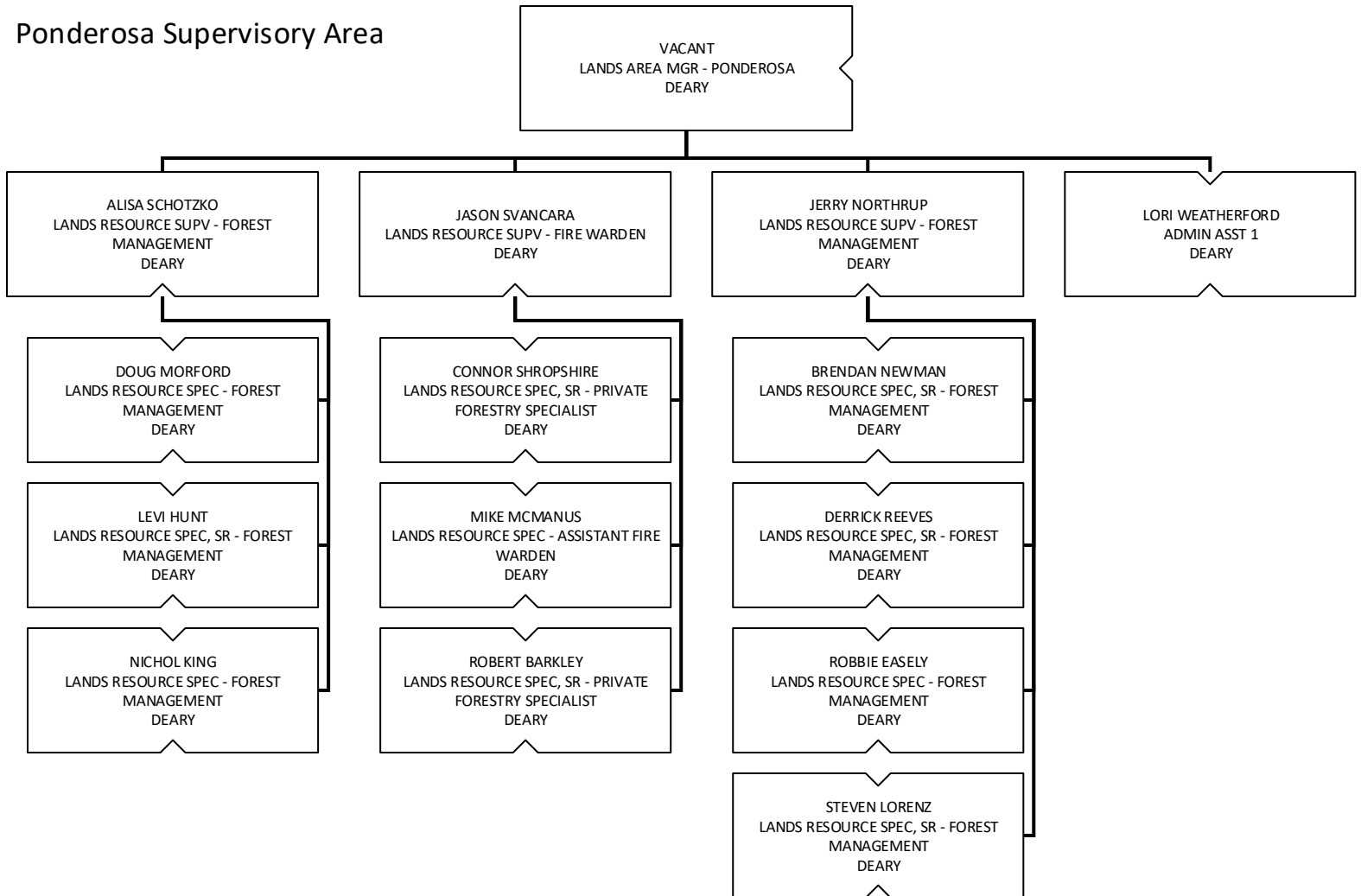
MICA Supervisory Area



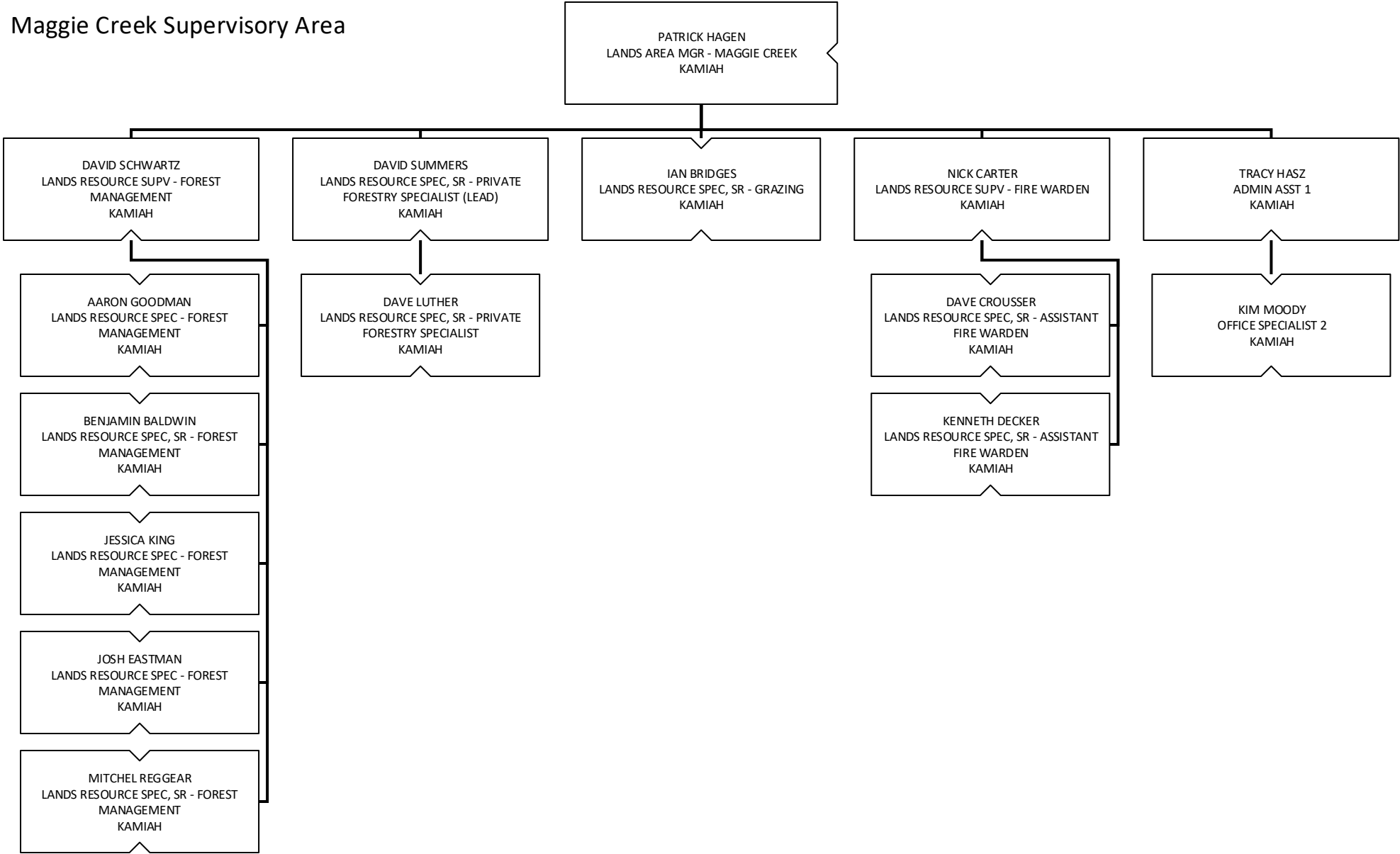
St. Joe Supervisory Area



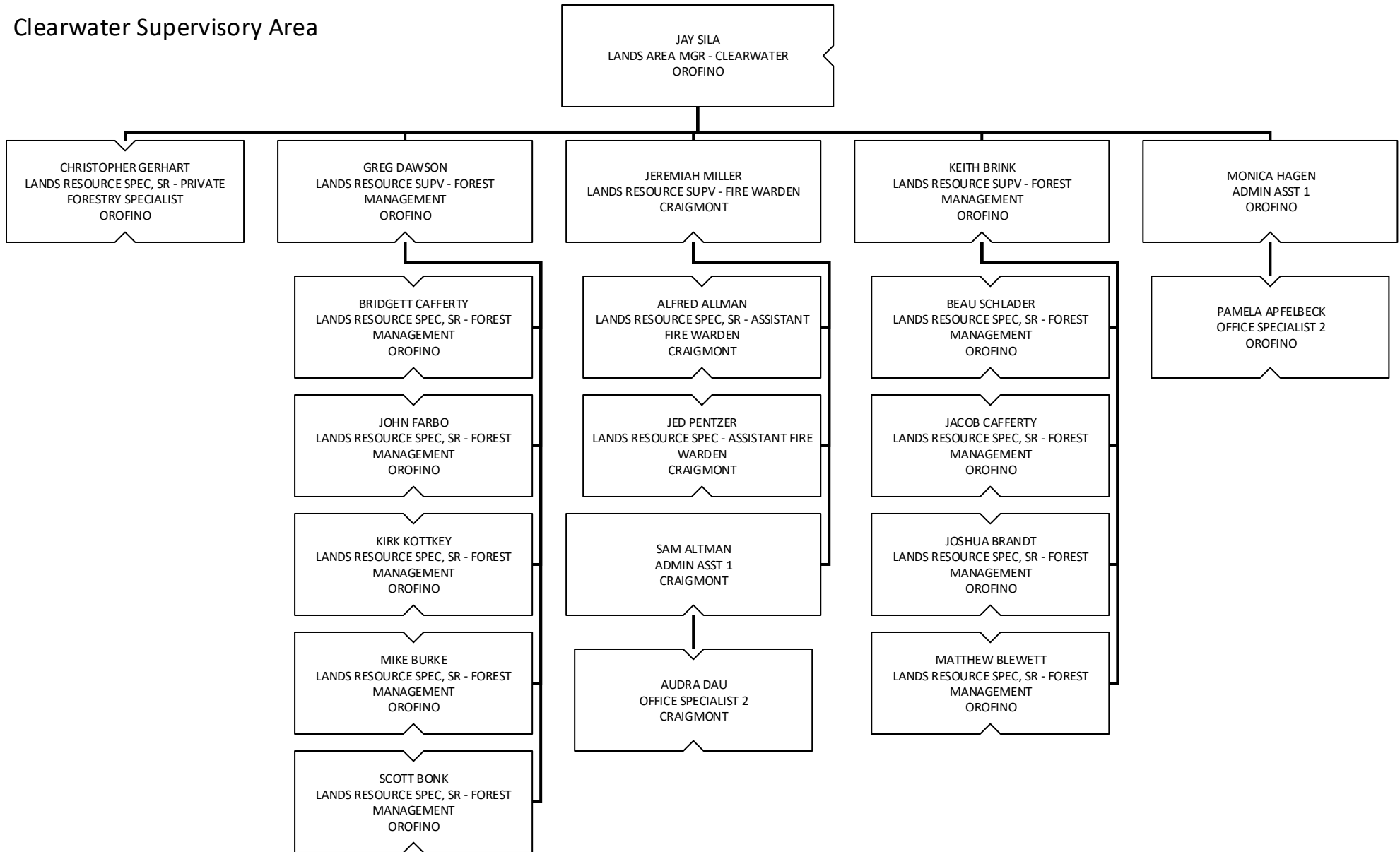
Ponderosa Supervisory Area



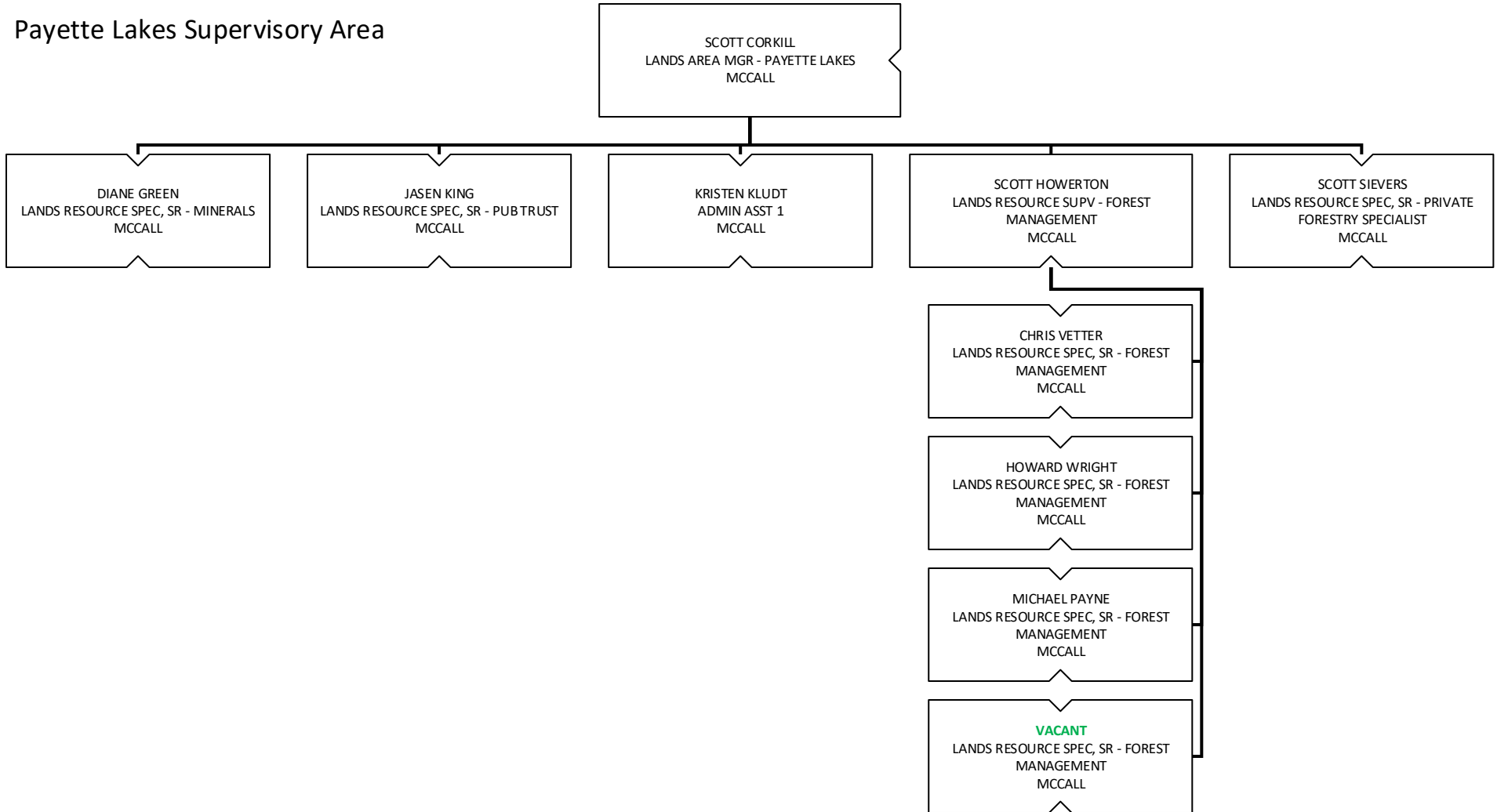
Maggie Creek Supervisory Area



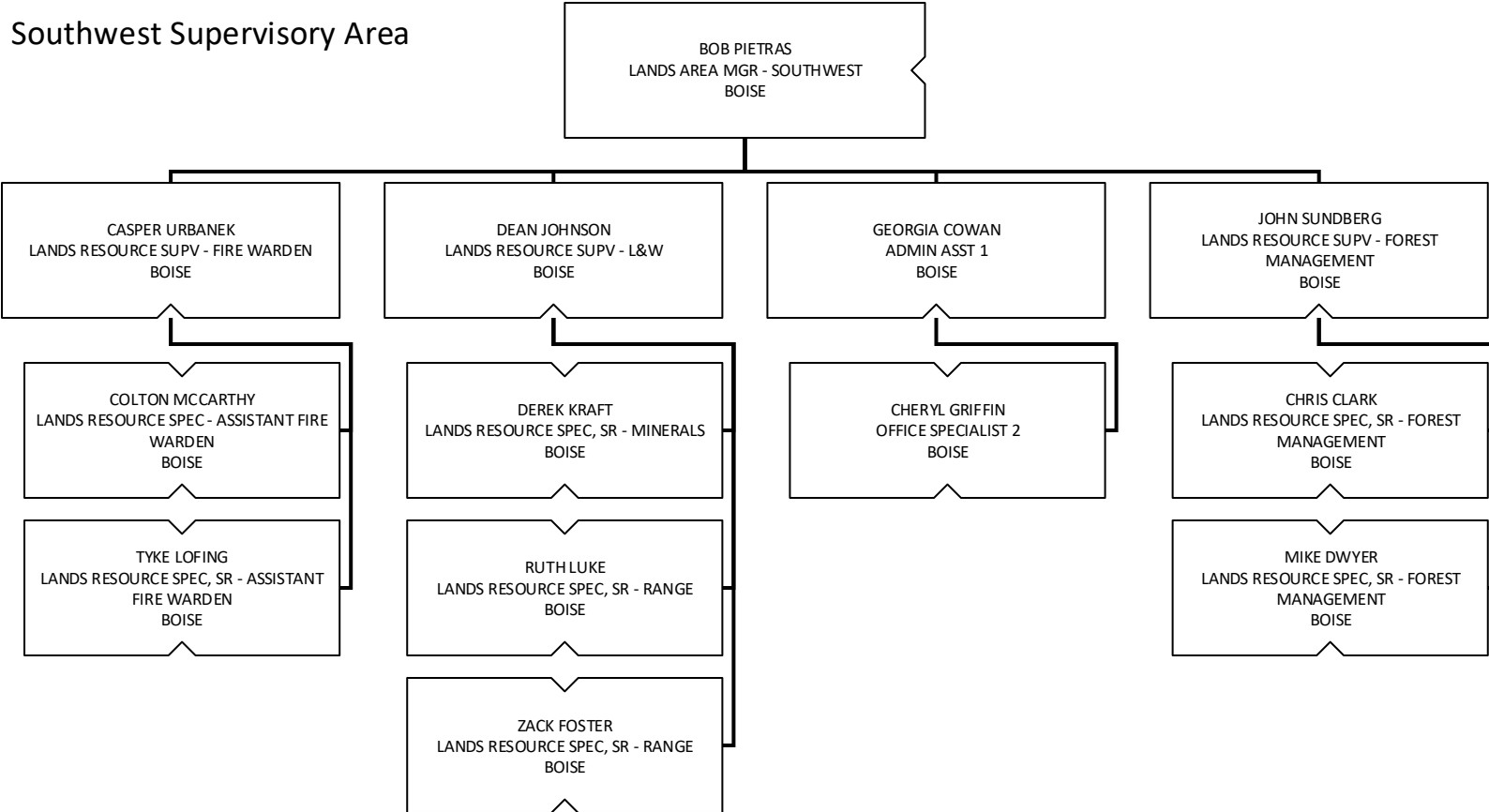
Clearwater Supervisory Area



Payette Lakes Supervisory Area



Southwest Supervisory Area



Eastern Supervisory Area

