



SH-59



SH-59



SH-59



SH-59



SH-59



SH-59



SH-59



SH-59



SH-59





SH-59



SH-59



SH-59

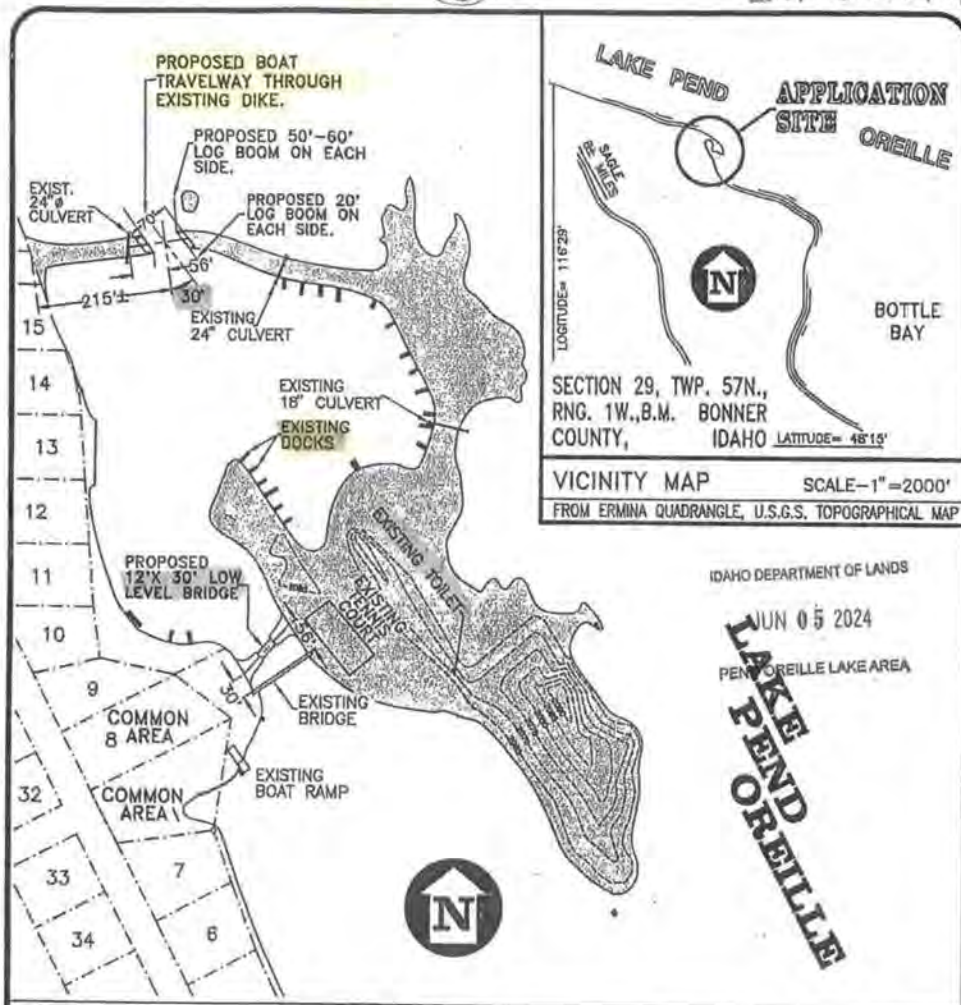


SH-59



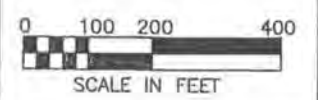
SH-59

Permit (C) Causeway Bridge Dimensions



PURPOSE: PROVIDE IMPROVED BOAT ACCESS TO LAGOON and IMPROVED VEHICLE ACCESS TO ISLAND.
 DATUM: N.G.V.D. 00'

SHEET TITLE:
 GENERAL LAYOUT



APPLICATION No. _____

PROPOSED DIKE EXCAVATION and BRIDGE CONSTRUCTION IN: LAKE PEND OREILLE AT: NEAR SANDPOINT, IDAHO COUNTY OF BONNER STATE: IDAHO APPLICATION BY: SANDPOINT POINT OWNERS ASSOCIATION SHEET 1 OF 4 DATE: 6-27-95

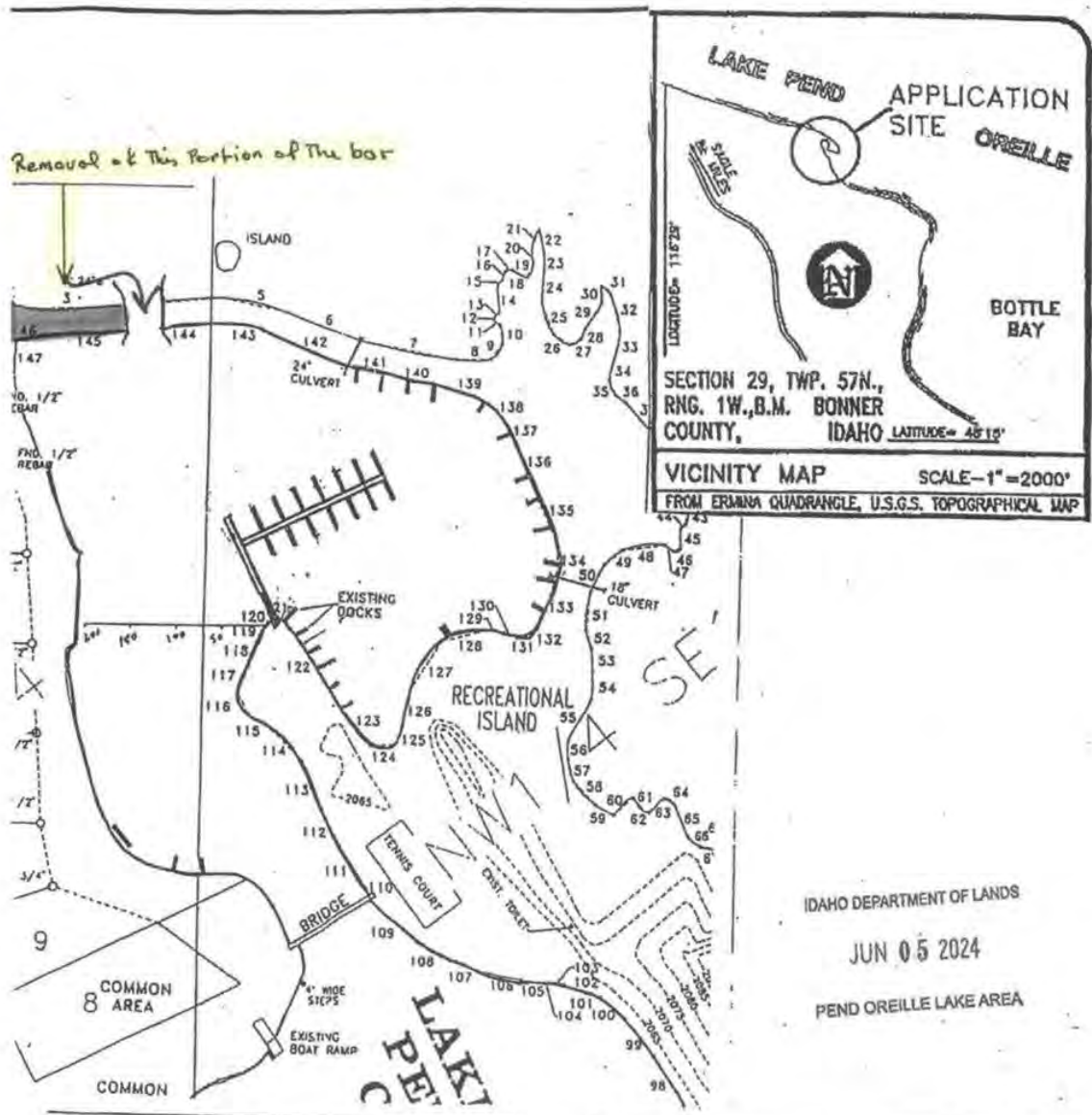
Historical Imagery < A LONG TIME AGO >



SH-59

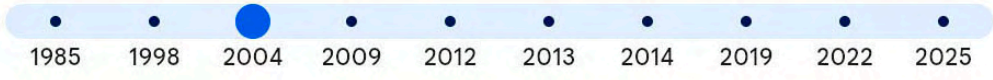


SH-59



IDAHO DEPARTMENT OF LANDS
JUN 05 2024
PEND OREILLE LAKE AREA

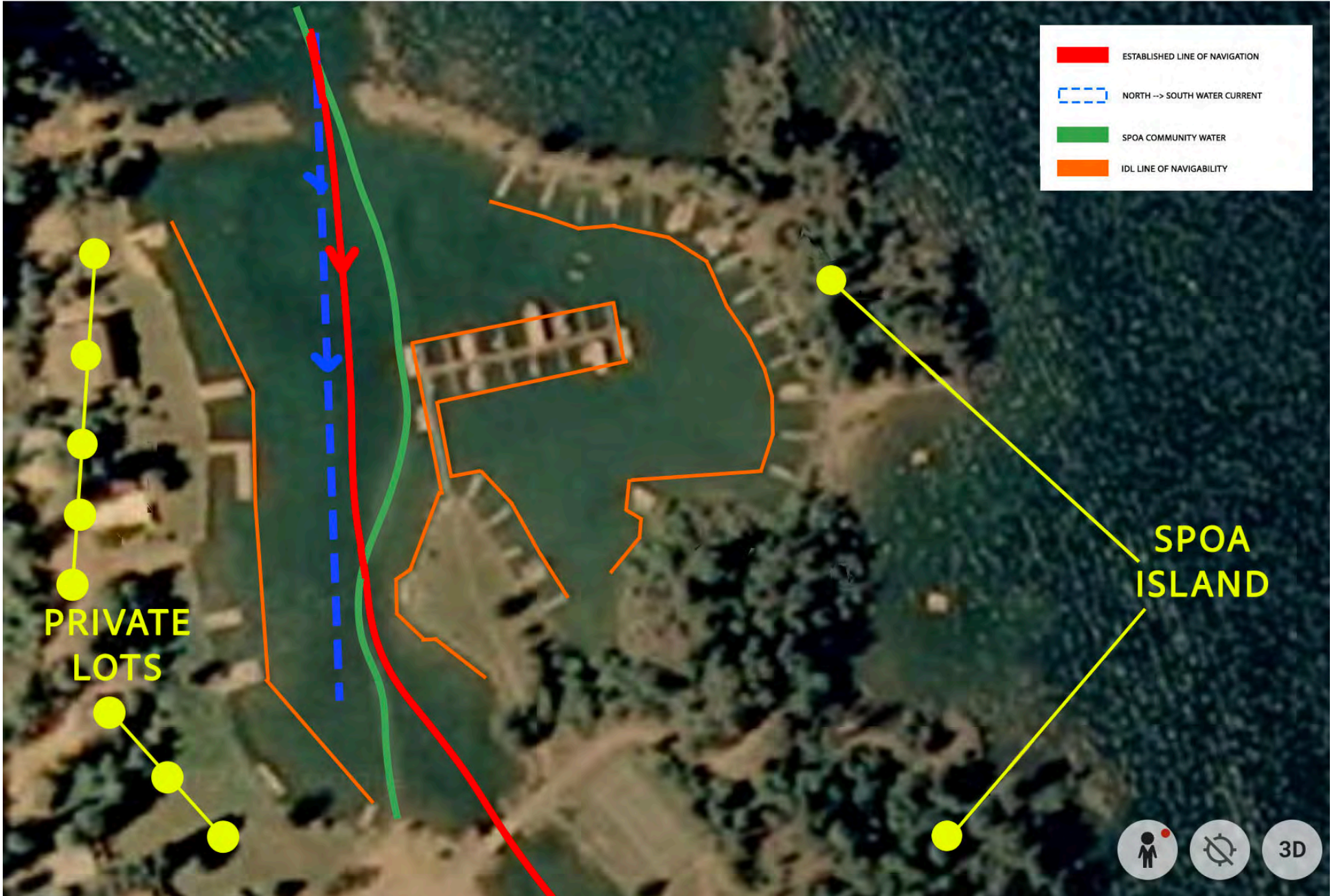
PURPOSE: PROVIDE BOAT MOORAGE DATUM: N.G.V.D. 0.0'	SHEET TITLE: GENERAL LAYOUT	PROPOSED DOCK CONSTRUCTION IN: LAKE PEND OREILLE AT: NEAR BANDPOINT, IDAHO COUNTY OF BONNER STATE: IDAHO APPLICATION BY: SOURDOUGH POINT OWNERS ASSOCIATION SHEET . OF . DATE:
<p>SCALE IN FEET</p>		APPLICATION No. _____



SH-59



SH-59



Historical Imagery



Jun 5, 2025



1985

1998

2004

2009

2012

2013

2014

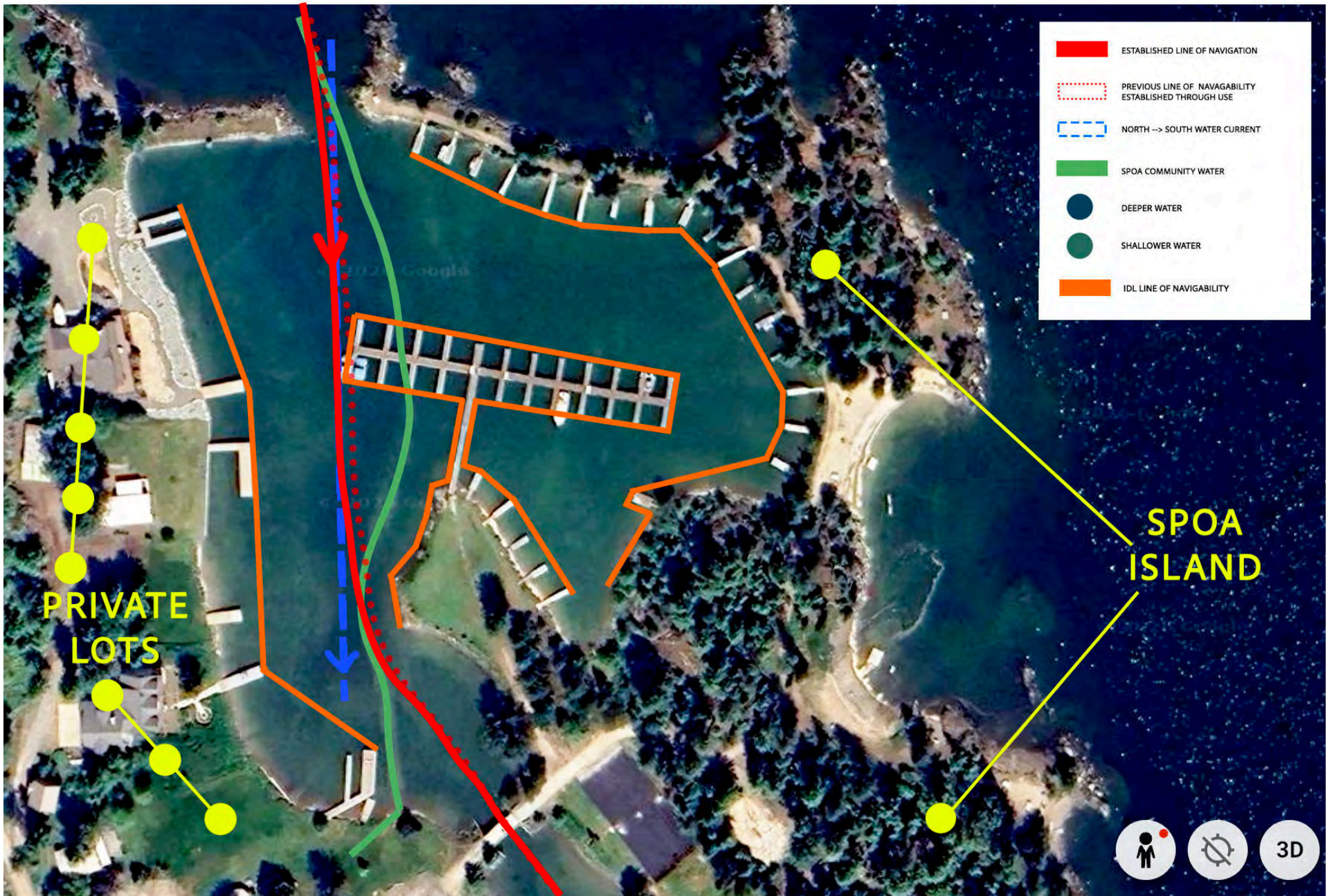
2019

2022

2025



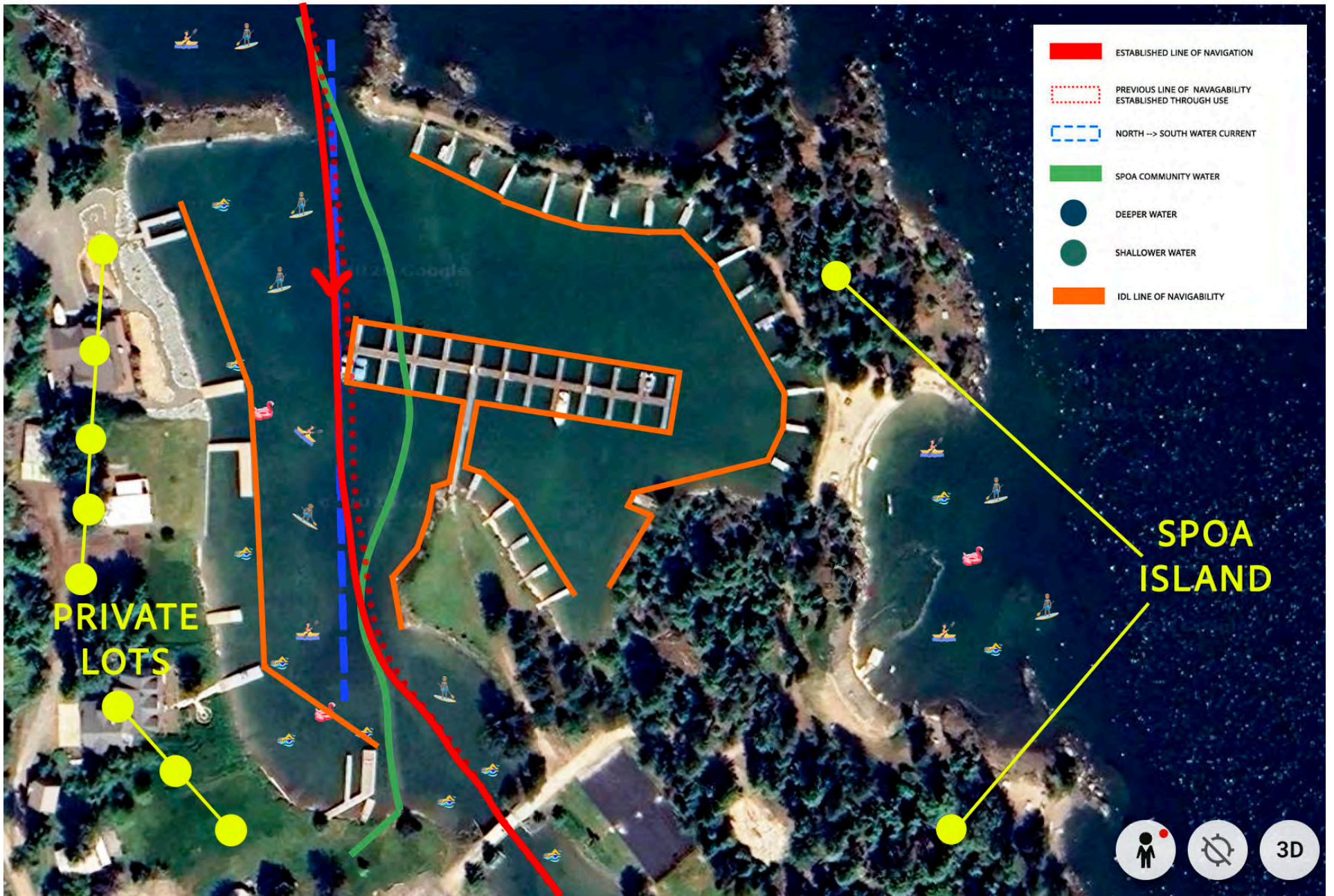
SH-59



- ESTABLISHED LINE OF NAVIGATION
- PREVIOUS LINE OF NAVAGABILITY ESTABLISHED THROUGH USE
- NORTH --> SOUTH WATER CURRENT
- SPOA COMMUNITY WATER
- DEEPER WATER
- SHALLOWER WATER
- IDL LINE OF NAVIGABILITY

PRIVATE LOTS

SPOA ISLAND

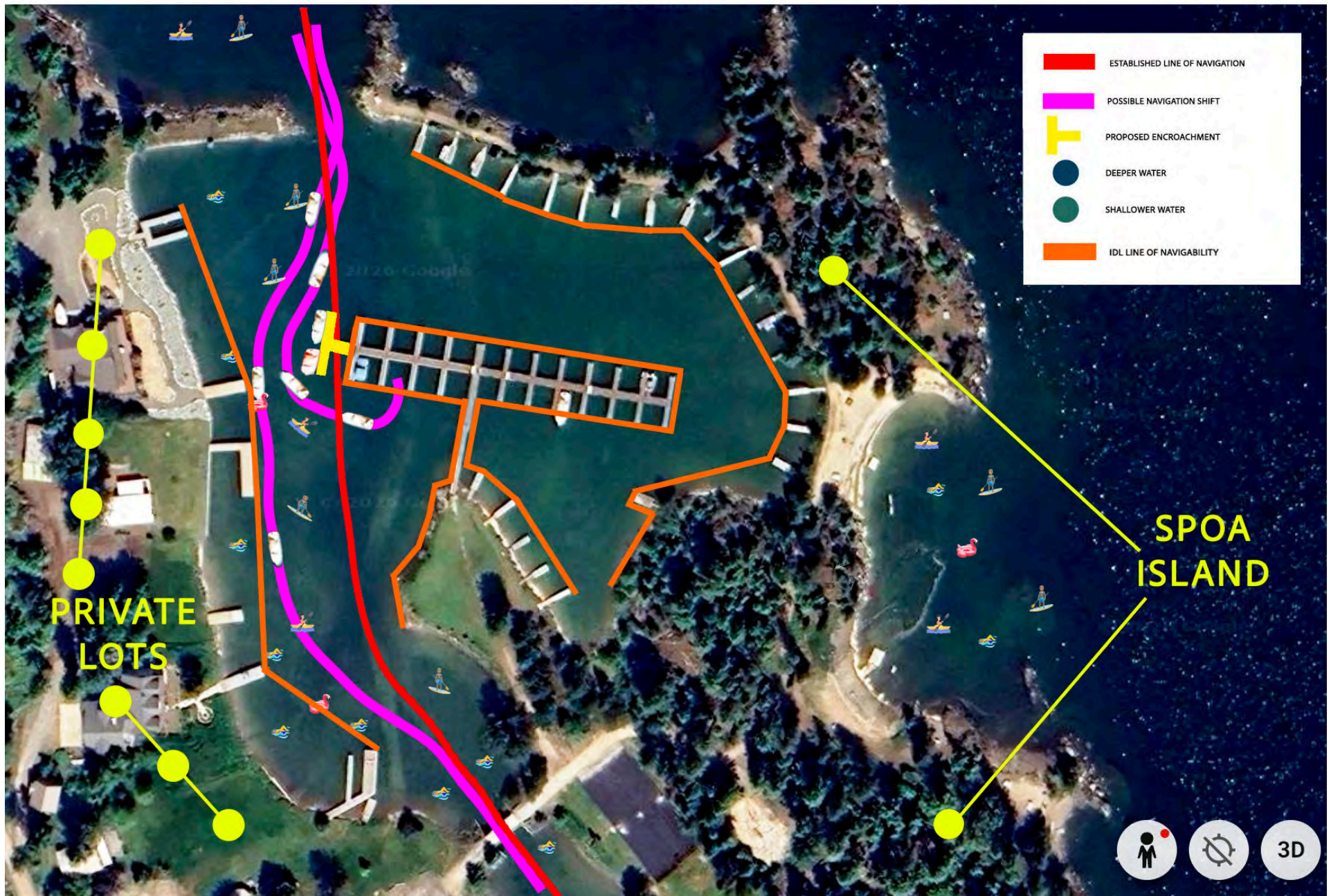


Historical Imagery

< PROPOSED ENCROACHMENT >

>|

1985 1998 2004 2009 2012 2013 2014 2019 2022 2025



SH-59

Historical Imagery



Jun 5, 2025



1985

1998

2004

2009

2012

2013

2014

2019

2022

2025



SH-59

Historical Imagery



Jun 5, 2025



1985

1998

2004

2009

2012

2013

2014

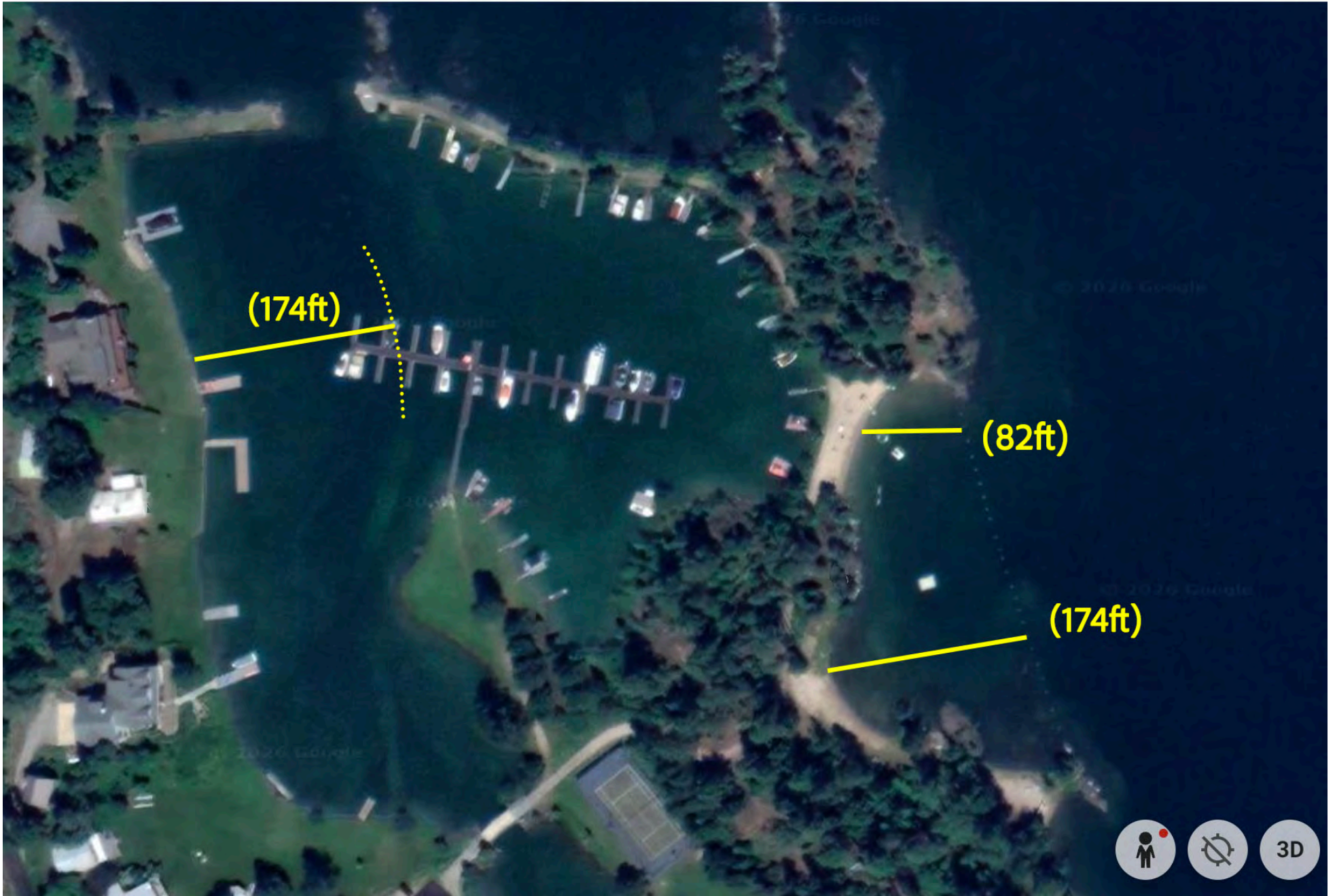
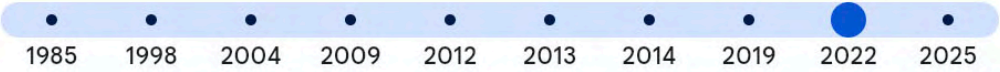
2019

2022

2025



SH-59



Historical Imagery

< Jun 5, 2025 >



SH-59



SH-59

Historical Imagery



Jun 5, 2025



1985

1998

2004

2009

2012

2013

2014

2019

2022

2025



SH-59



SH-59







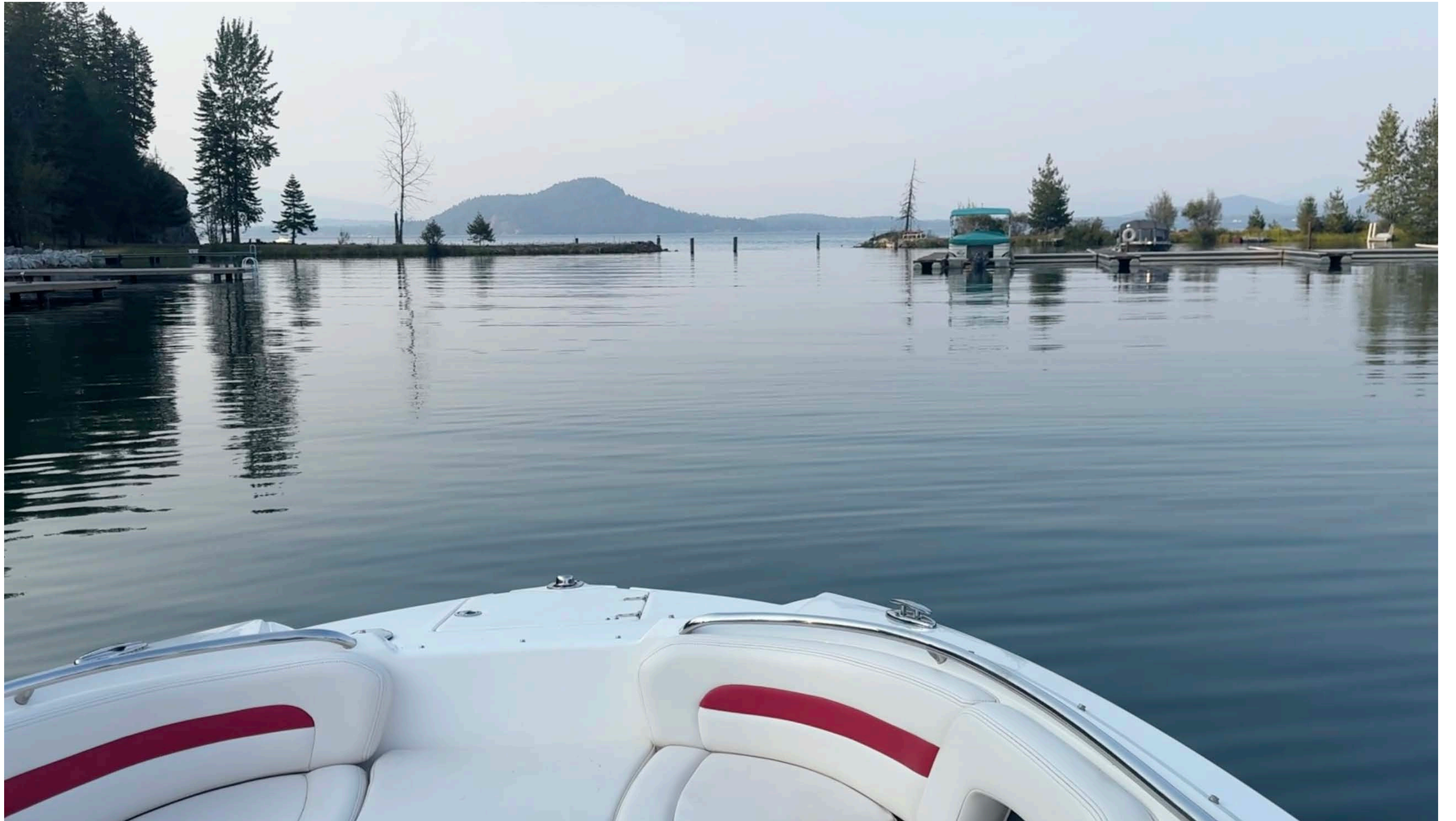


SH-59





SH-59



SH-59





SH-59



SH-59



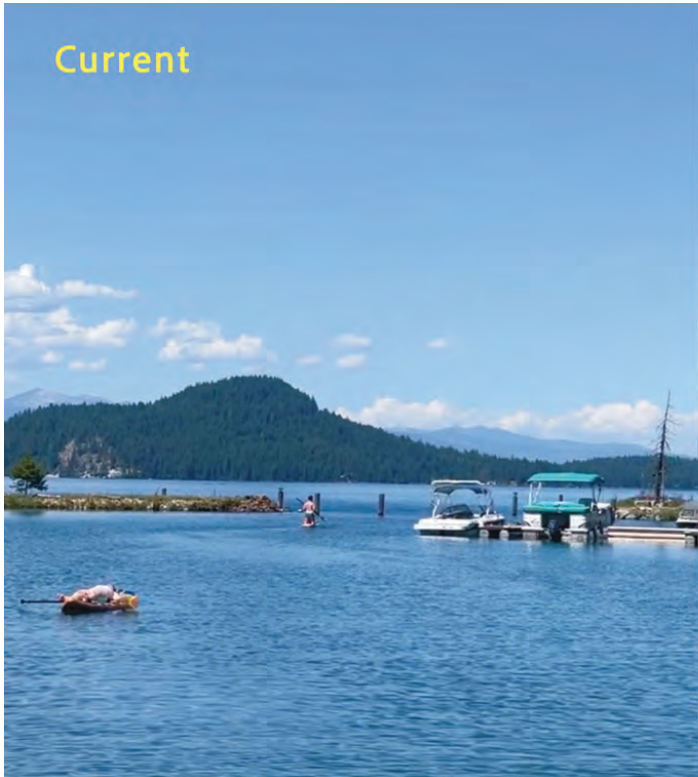
SH-59



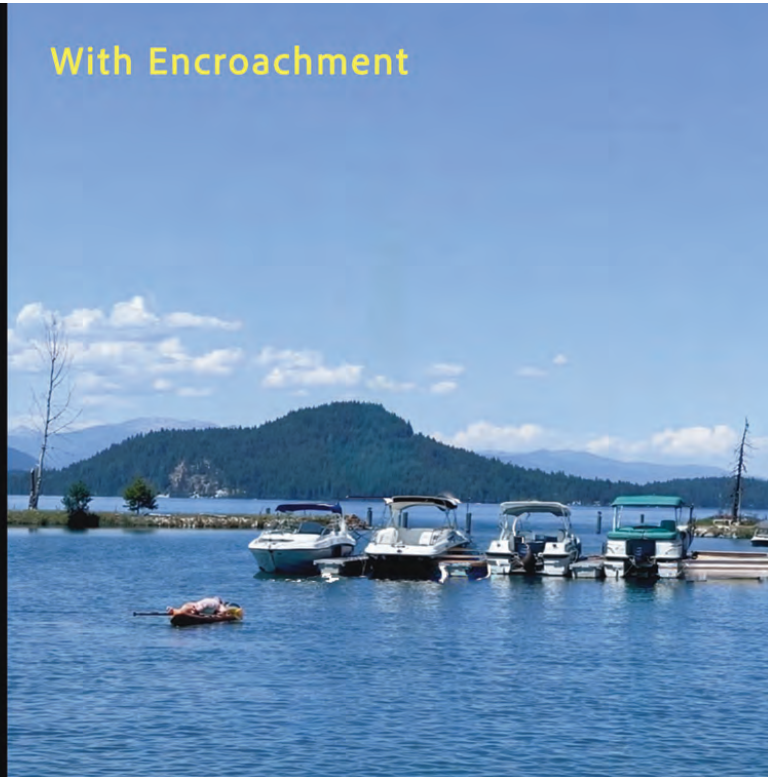
SH-59



Current



With Encroachment



SH-59

Current

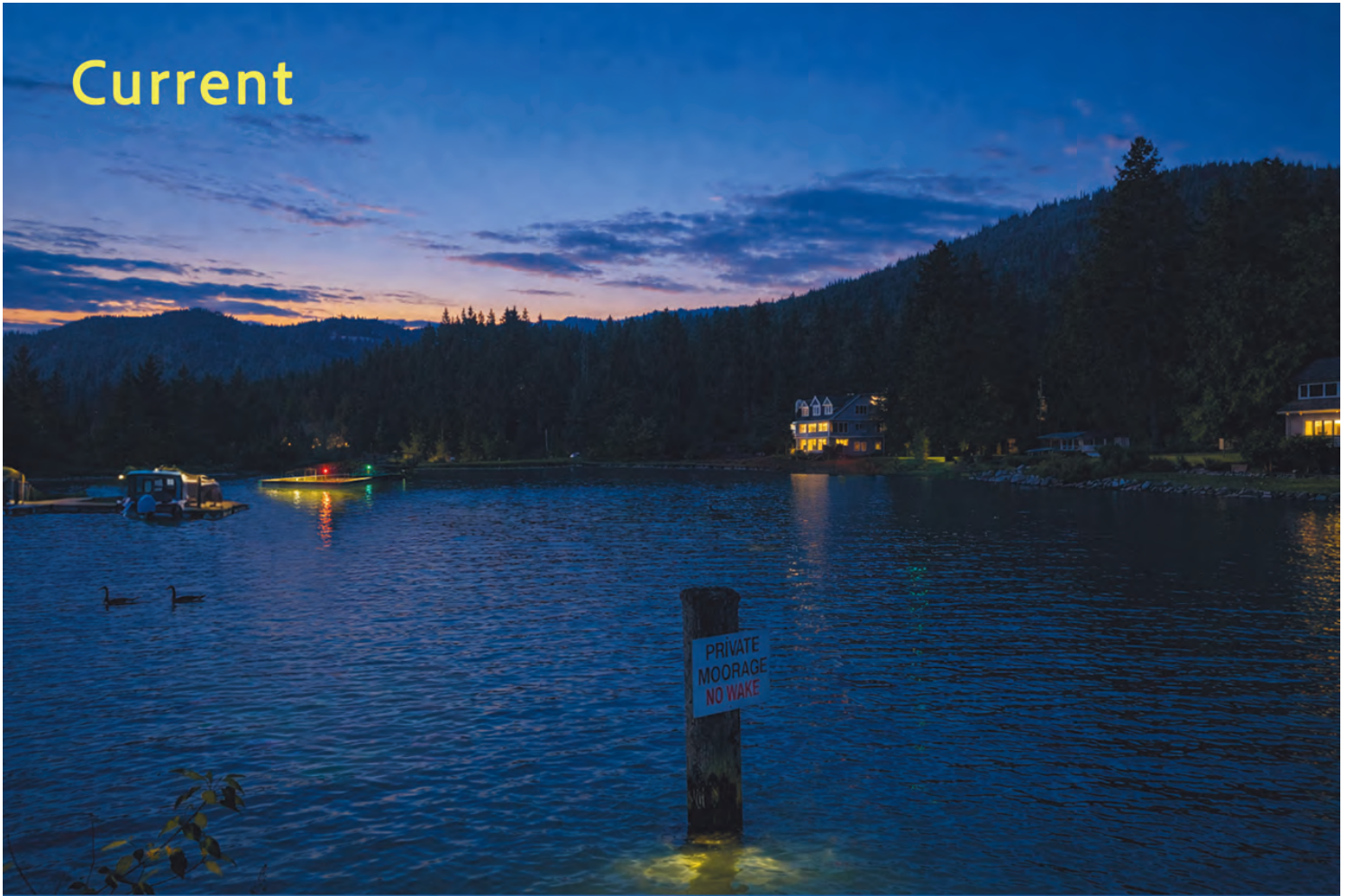


With Encroachment



SH-59

Current



With Encroachment



Current



With Encroachment



SH-59

Current



With Encroachment



SH-59



Current



With Encroachment

Current



With Encroachment



SH-59



SH-59

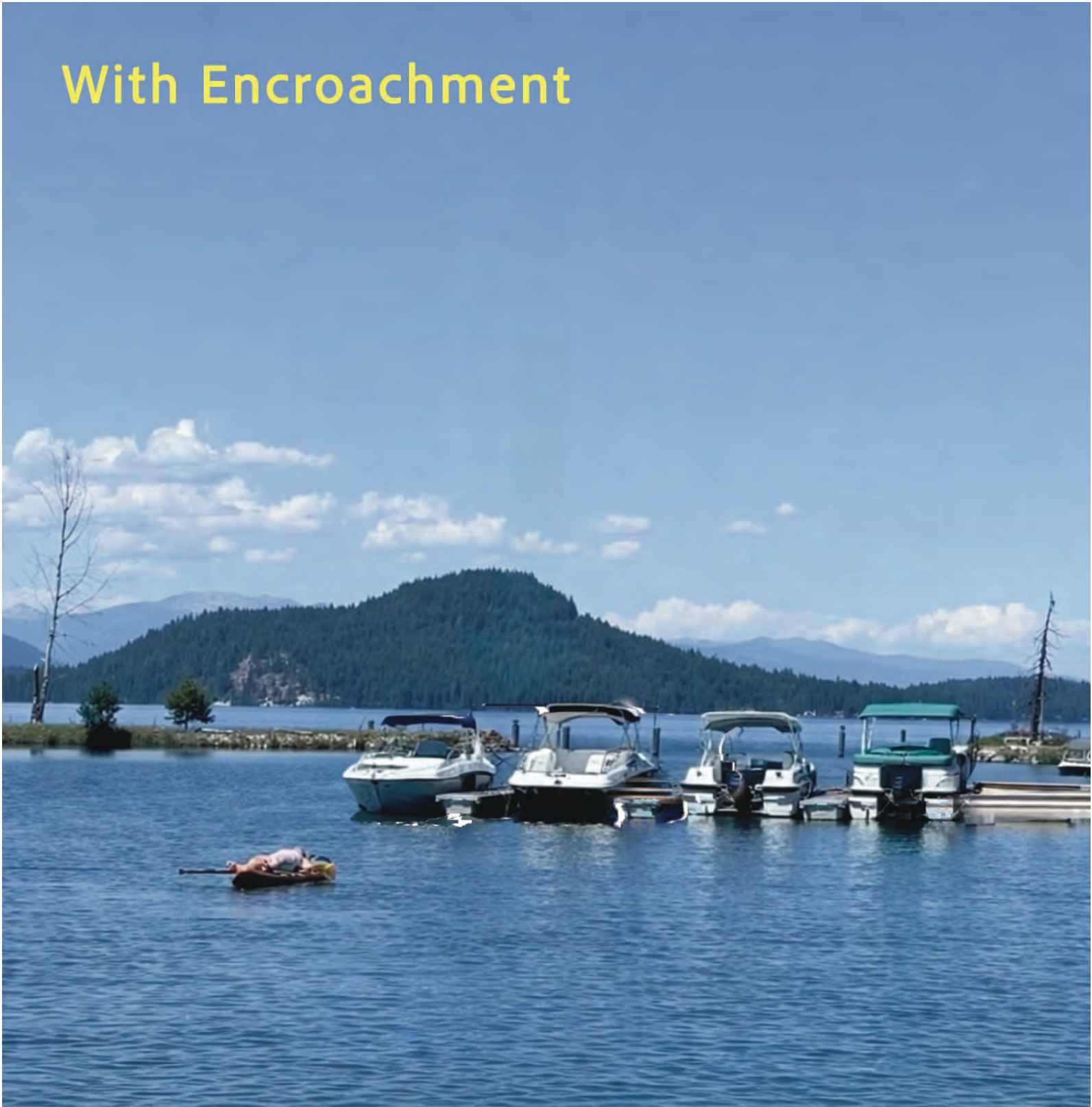


SH-59

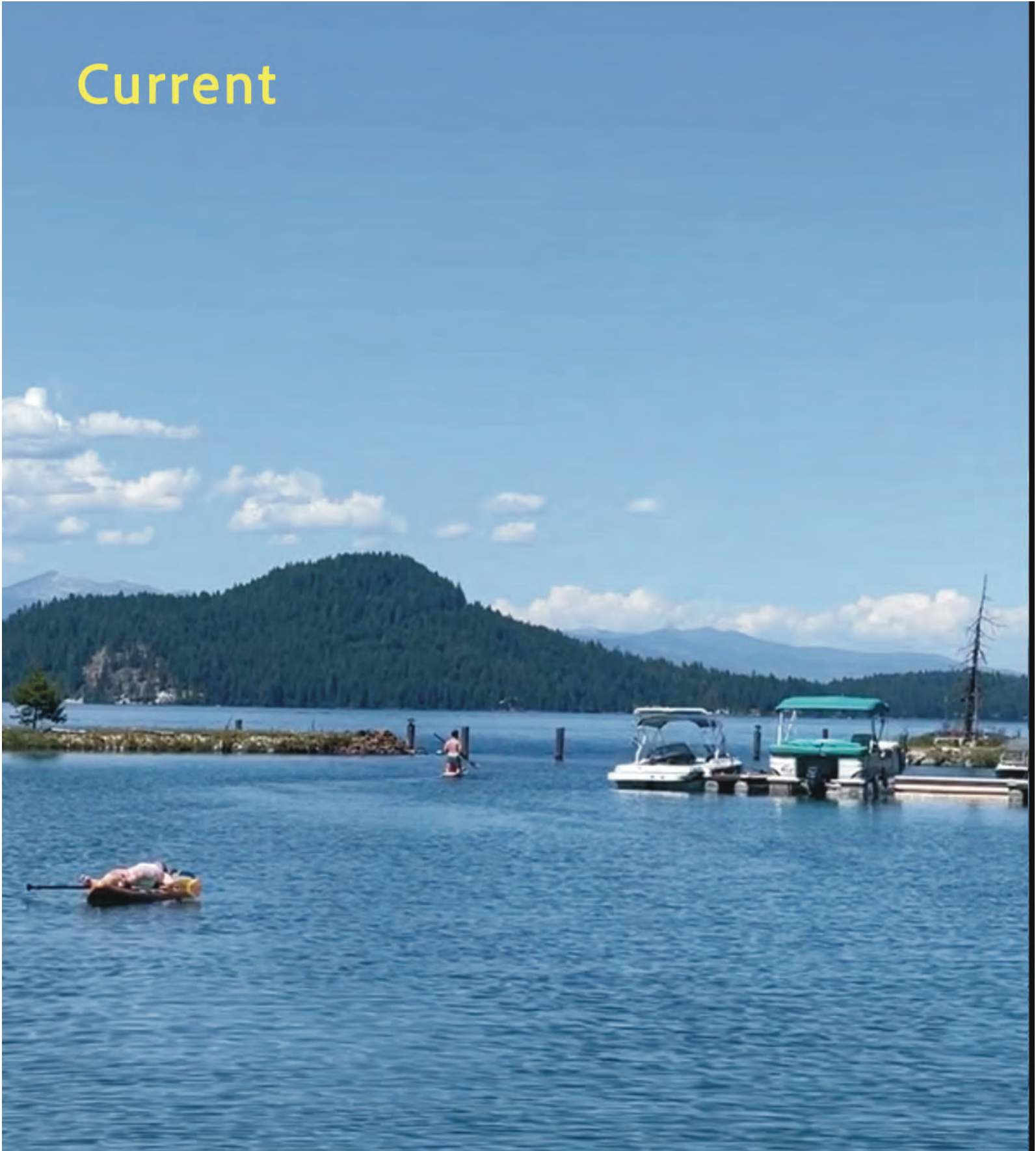


SH-59

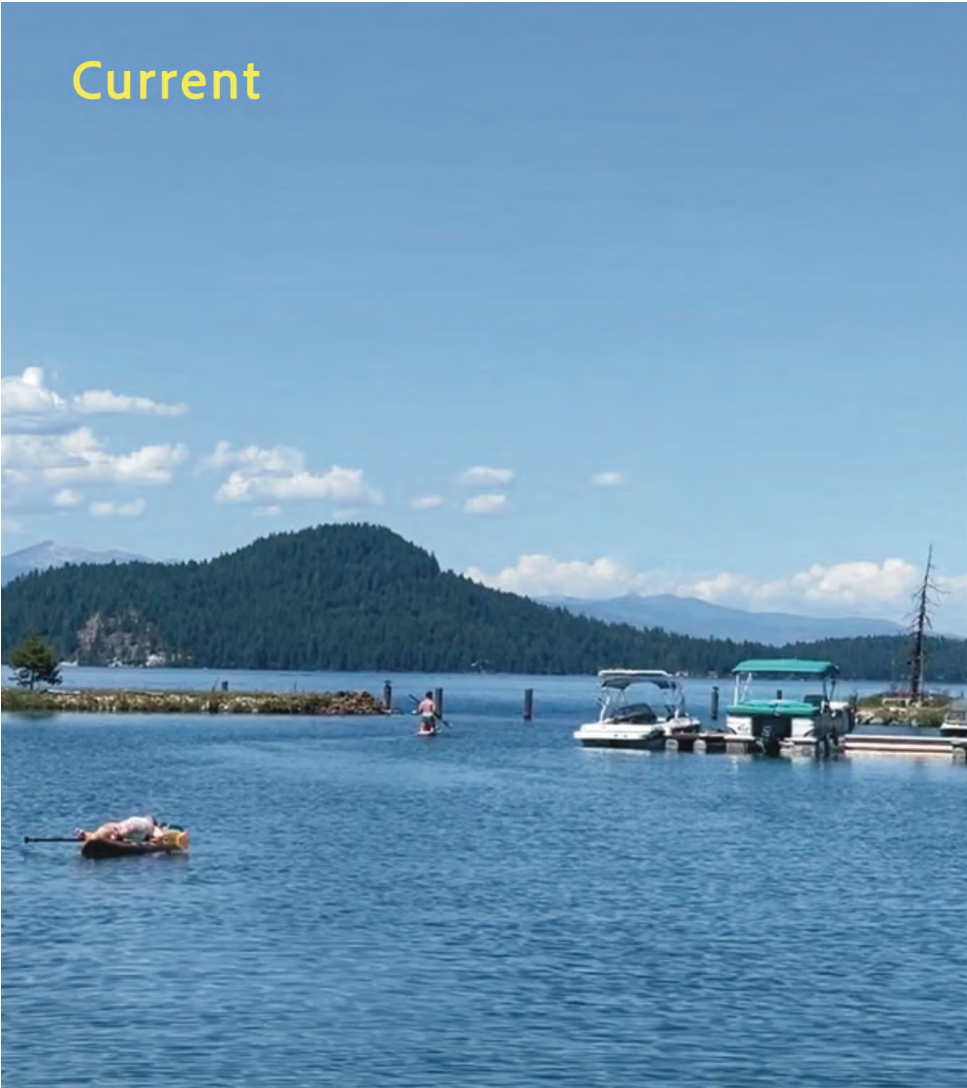
With Encroachment



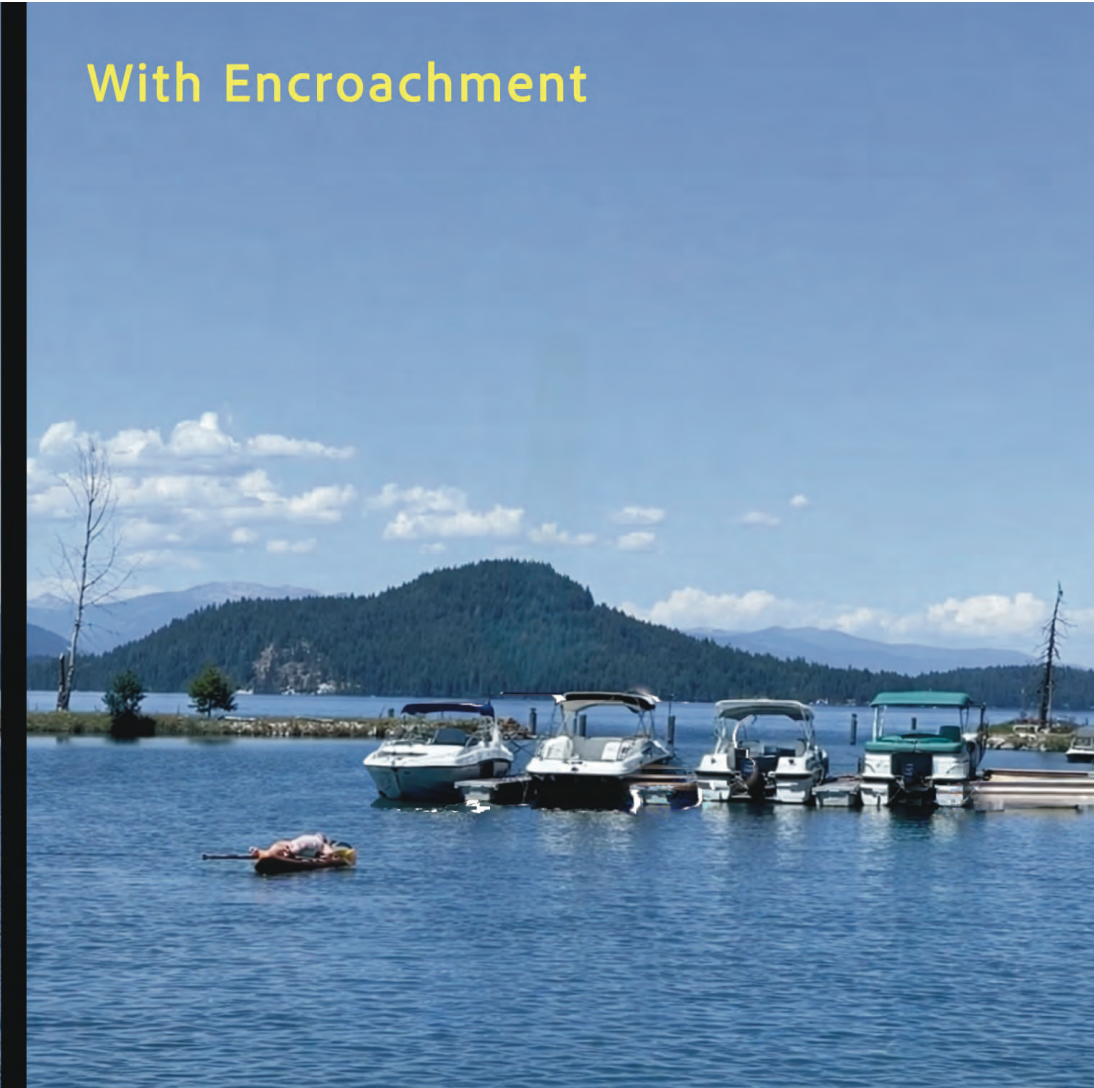
Current



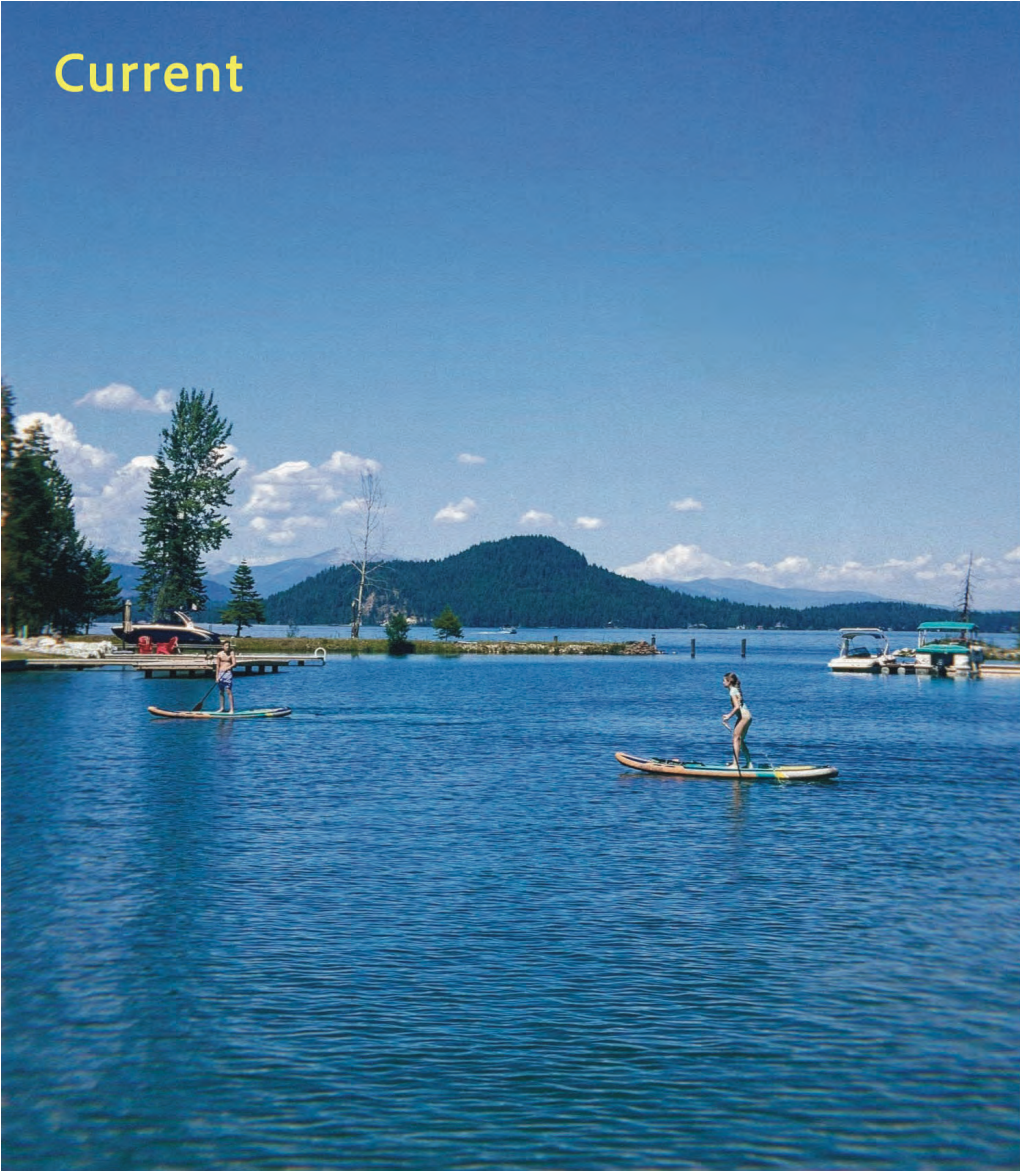
Current



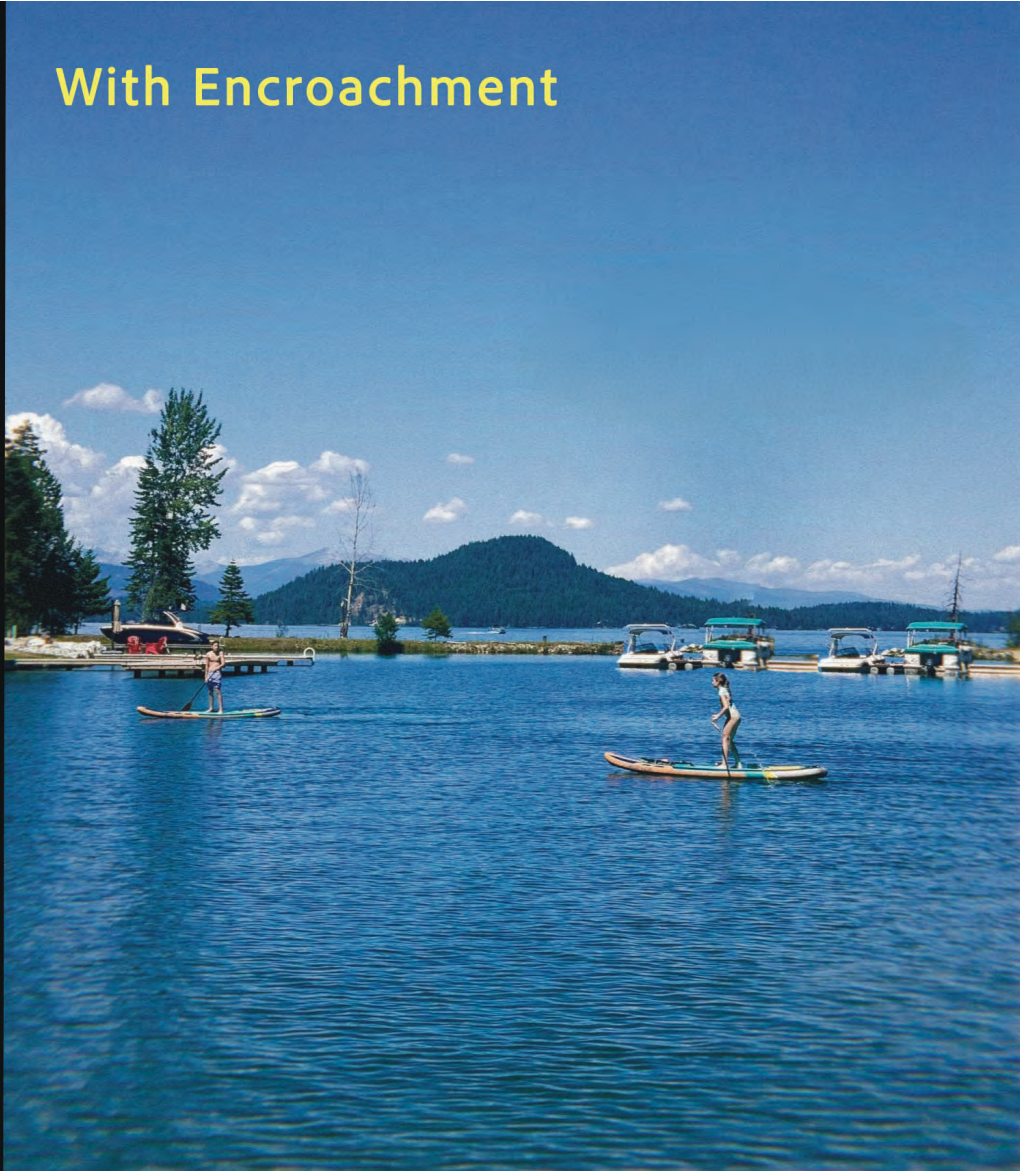
With Encroachment



Current



With Encroachment



Current



With Encroachment



Current



With Encroachment



Current



With Encroachment





Current



With Encroachment

Current



With Encroachment



Historical Imagery < Jun 5, 2025 >

- 1985
- 1998
- 2004
- 2009
- 2012
- 2013
- 2014
- 2019
- 2022
- 2025



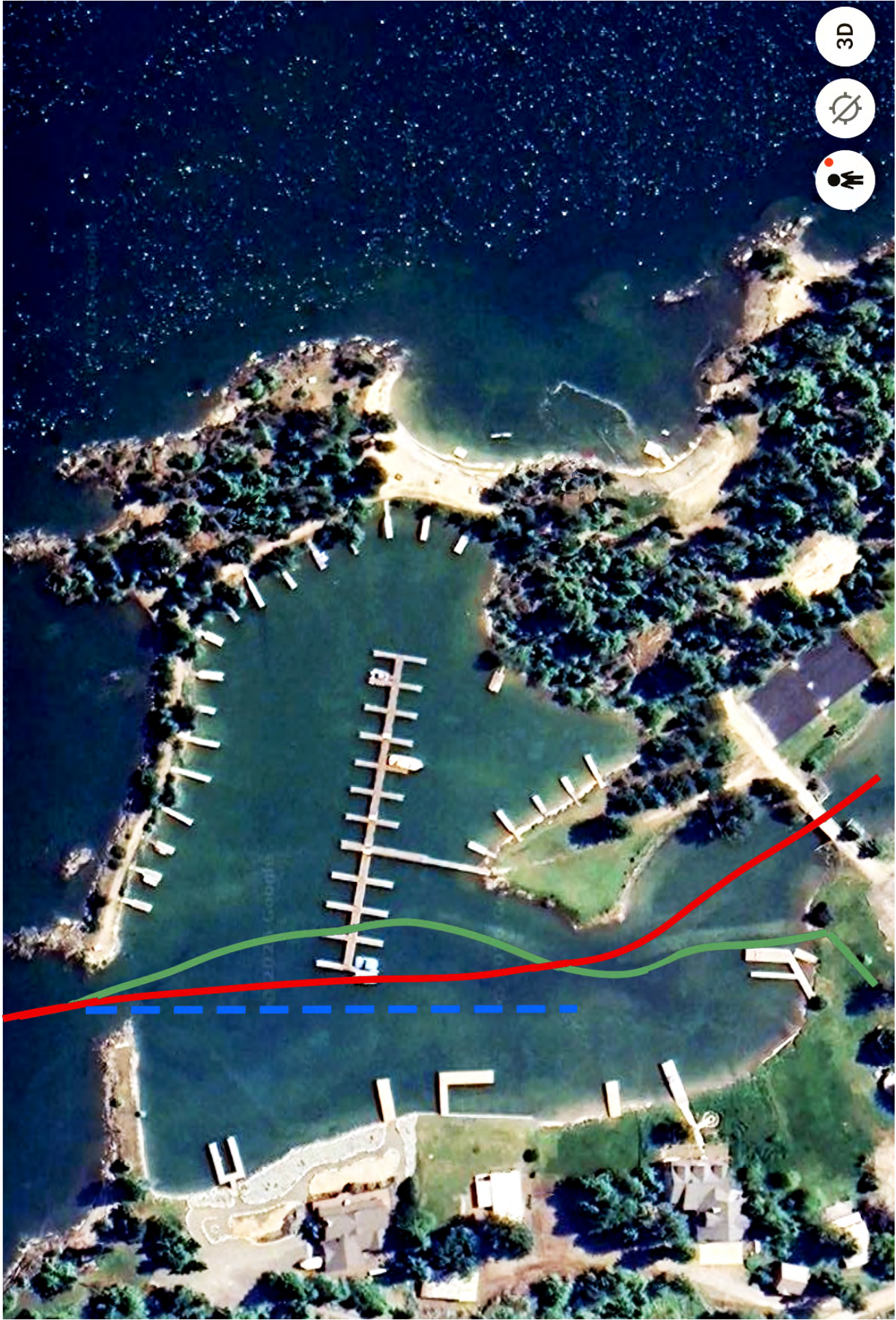
3D

🗨️

👤

Historical Imagery < Jun 5, 2025 >

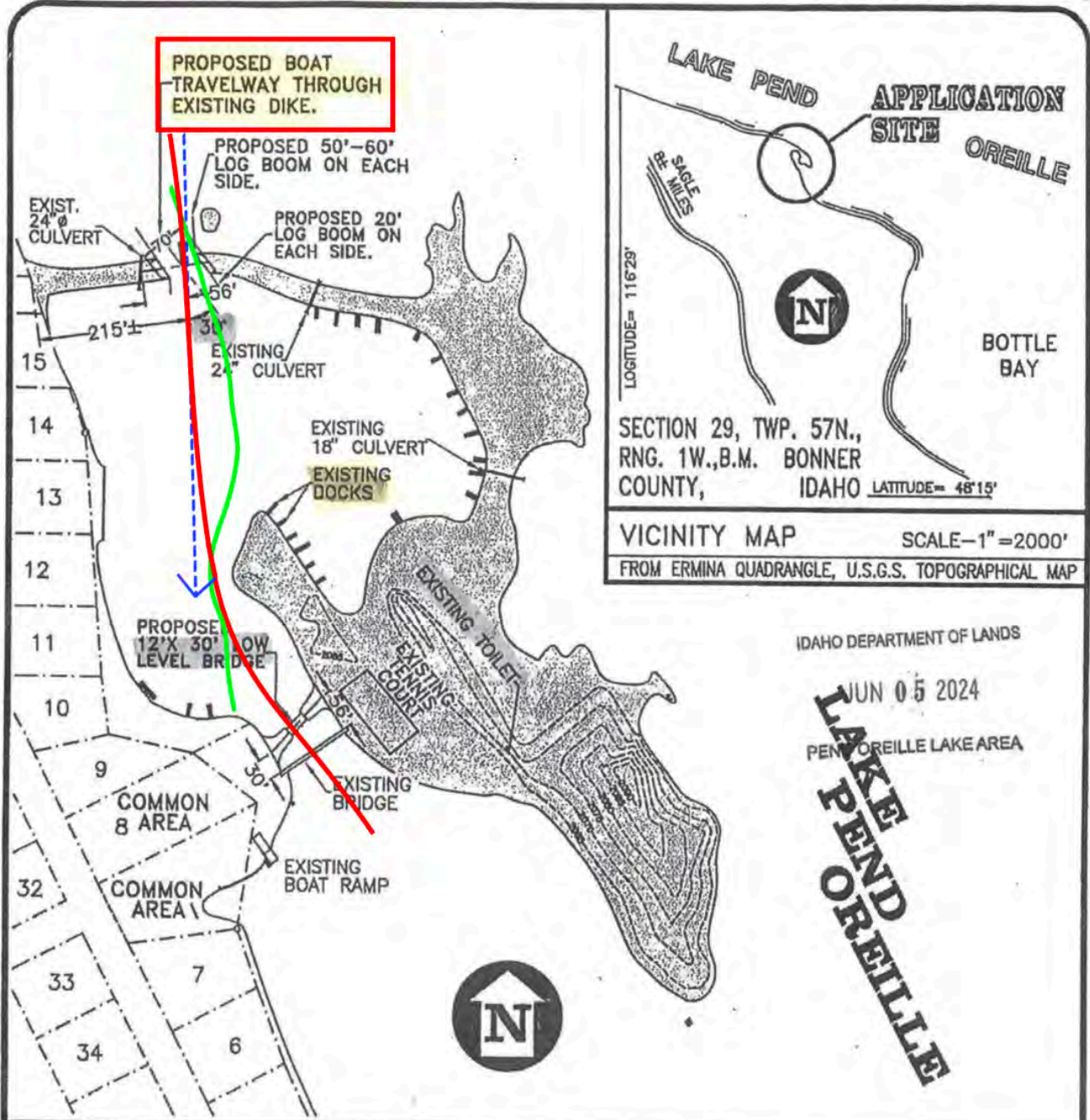
- 1985
- 1998
- 2004
- 2009
- 2012
- 2013
- 2014
- 2019
- 2022
- 2025



SH-59

Permit Causeway (C)

Bridge Dimensions



PURPOSE: PROVIDE IMPROVED BOAT ACCESS TO LAGOON and IMPROVED VEHICLE ACCESS TO ISLAND.

DATUM: N.G.V.D. 0.0'

SHEET TITLE:
GENERAL LAYOUT

0 100 200 400

SCALE IN FEET

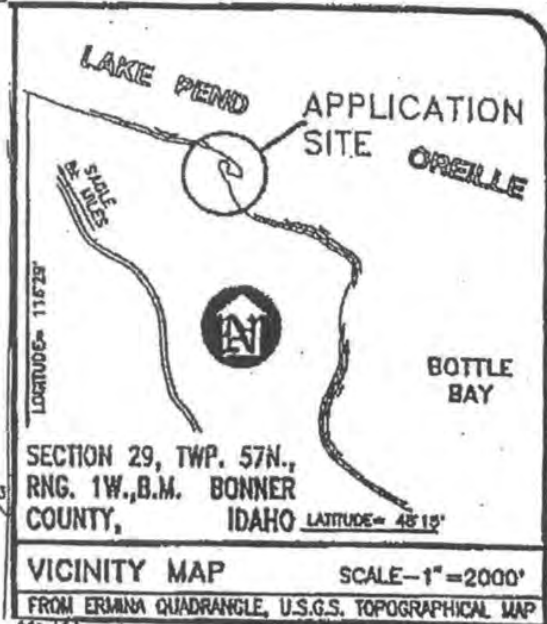
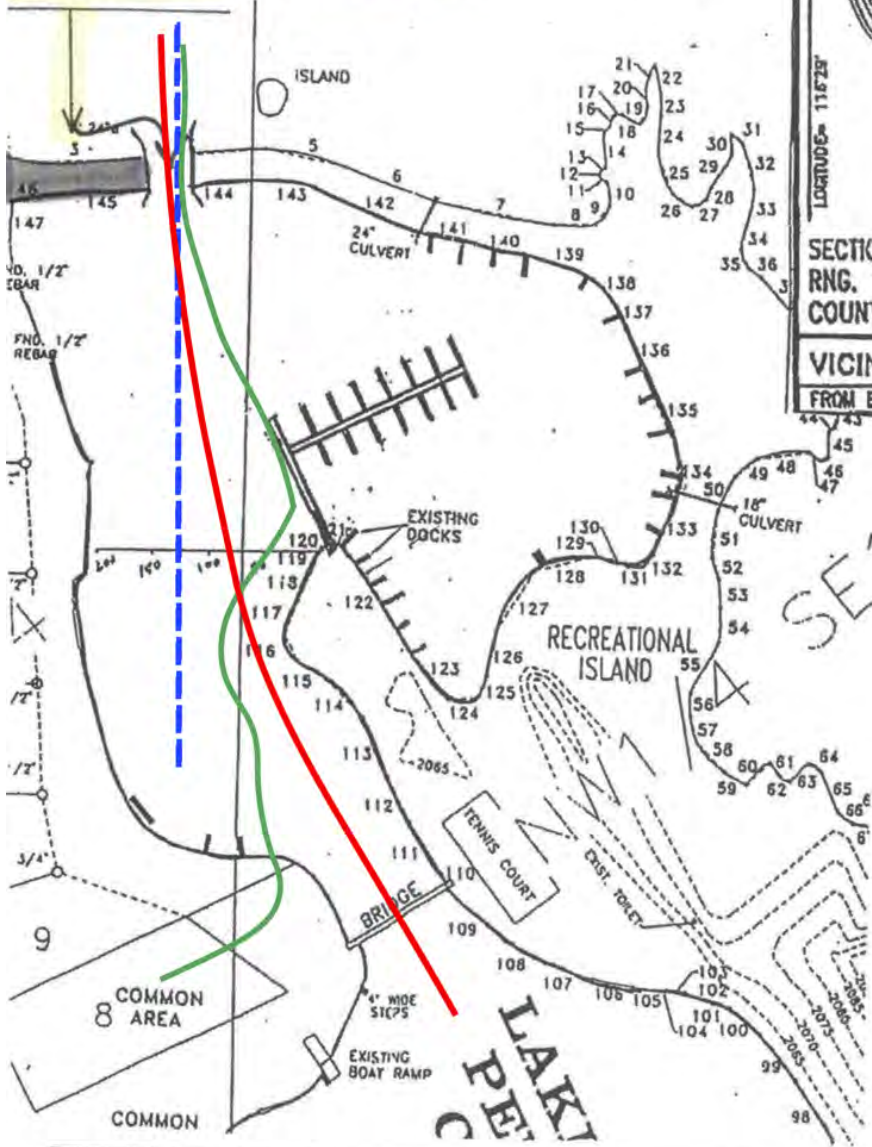
APPLICATION No. _____

PROPOSED DIKE EXCAVATION and BRIDGE CONSTRUCTION IN: LAKE PEND OREILLE AT: NEAR SANDPOINT, IDAHO COUNTY OF BONNER STATE: IDAHO

APPLICATION BY: BOURDOUGH POINT OWNER'S ASSOCIATION

SHEET 1 OF 4 DATE: 6-27-95

Removal of this portion of the bar



IDAHO DEPARTMENT OF LANDS
 JUN 05 2024
 PEND OREILLE LAKE AREA

PURPOSE: PROVIDE BOAT MOORAGE
 DATUM: N.G.V.D. 0.0'

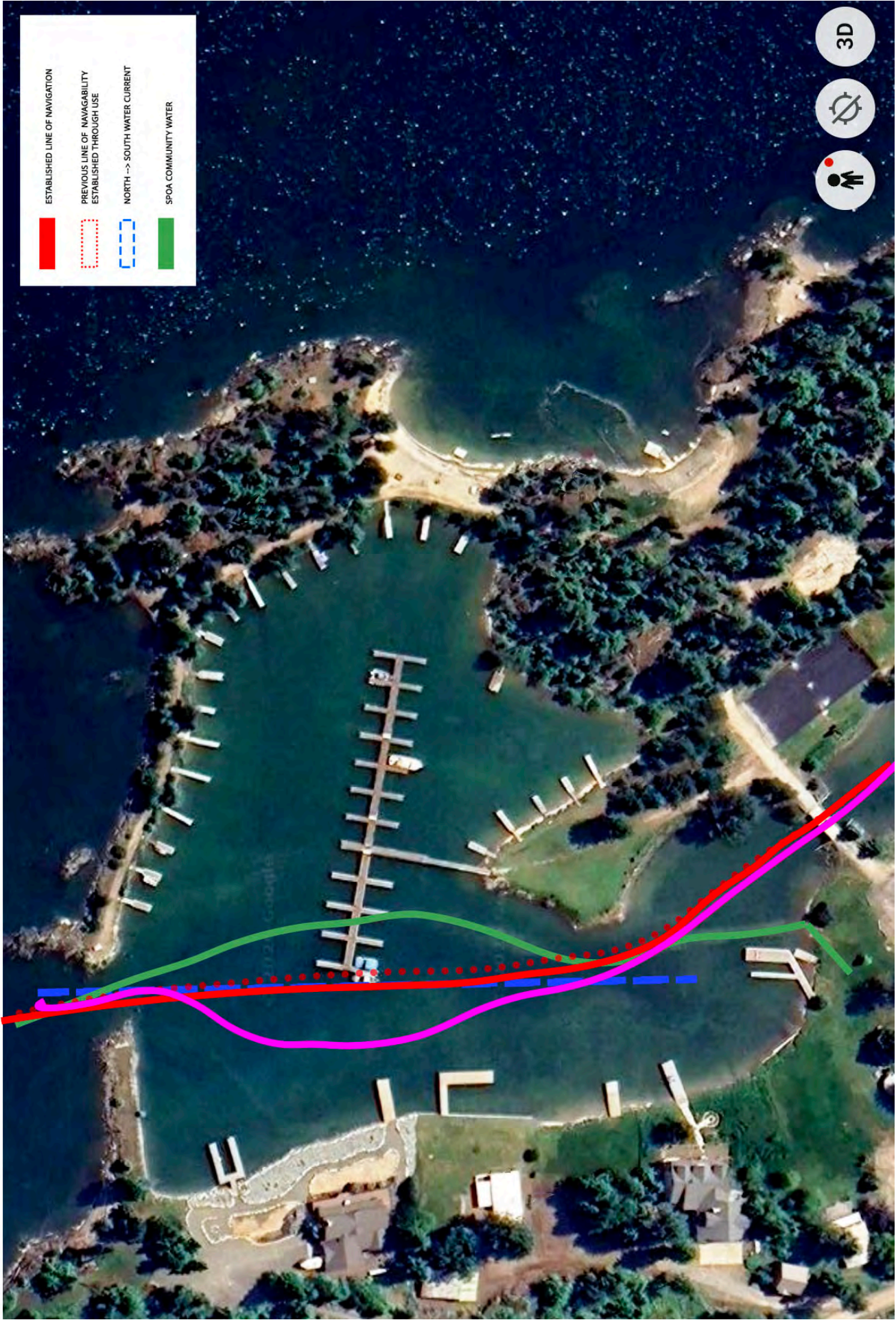
SHEET TITLE:
 GENERAL LAYOUT

0 100 200 400

 SCALE IN FEET

APPLICATION No. _____

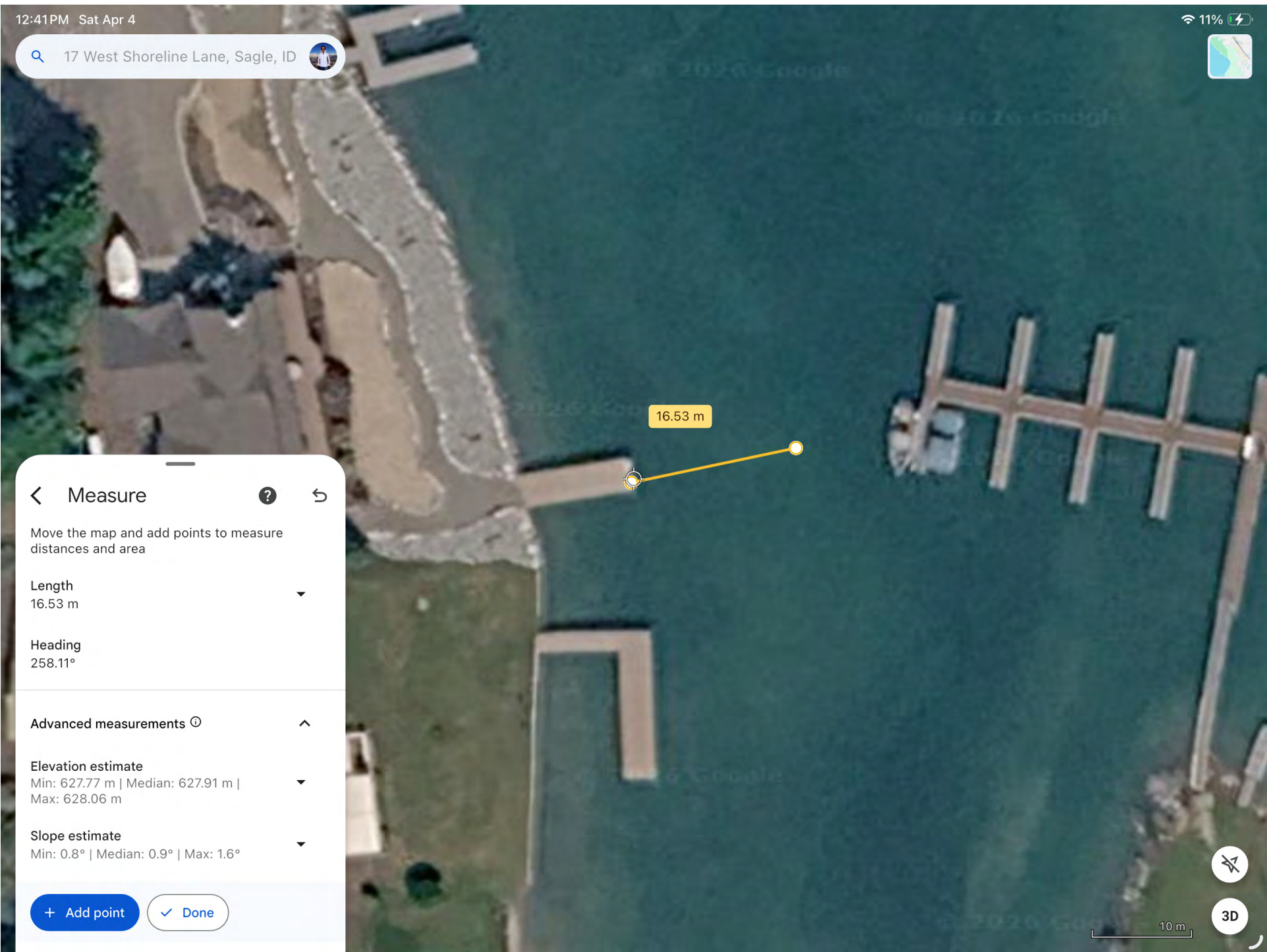
PROPOSED DOCK CONSTRUCTION
 IN: LAKE PEND OREILLE
 AT: NEAR BANDPOINT, IDAHO
 COUNTY OF BONNER
 STATE: IDAHO
 APPLICATION BY:
 SOUTHDROUGH POINT OWNERS ASSOCIATION
 SHEET ___ OF ___ DATE: _____



ESTABLISHED LINE OF NAVIGATION
PREVIOUS LINE OF NAVIGABILITY ESTABLISHED THROUGH USE
NORTH -> SOUTH WATER CURRENT
SPOA COMMUNITY WATER

3D
[Navigation icons: Home, Full Screen, 3D]

17 West Shoreline Lane, Sagle, ID



Measure

Move the map and add points to measure distances and area

Length
16.53 m

Heading
258.11°

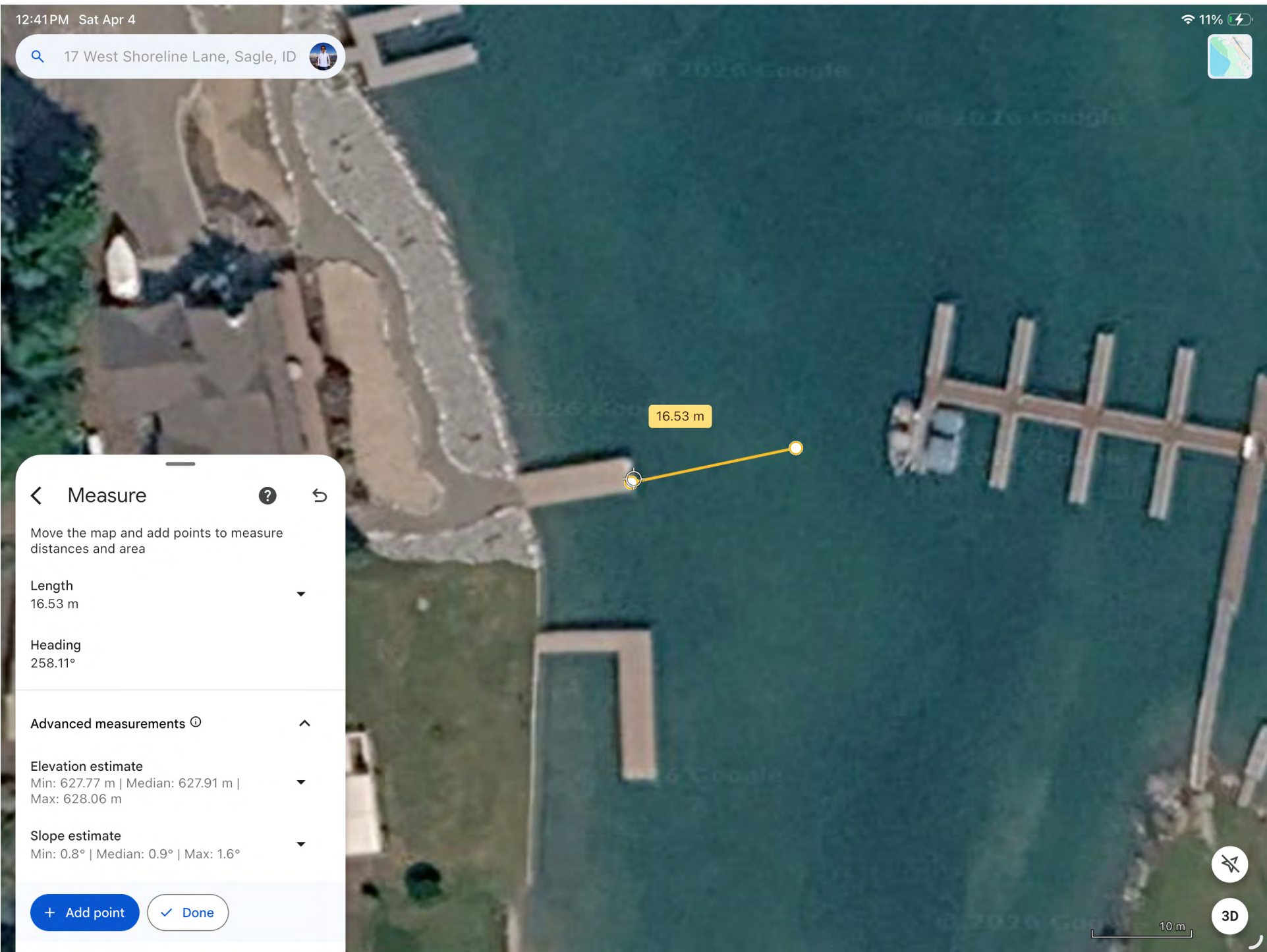
Advanced measurements

Elevation estimate
Min: 627.77 m | Median: 627.91 m | Max: 628.06 m

Slope estimate
Min: 0.8° | Median: 0.9° | Max: 1.6°

SH-59

17 West Shoreline Lane, Sagle, ID



Measure

Move the map and add points to measure distances and area

Length
16.53 m

Heading
258.11°

Advanced measurements

Elevation estimate
Min: 627.77 m | Median: 627.91 m | Max: 628.06 m

Slope estimate
Min: 0.8° | Median: 0.9° | Max: 1.6°

SH-59



12:44 PM Sat Apr 4



17 West Shoreline Lane, Sagle, ID



11%



3D

20 m

11.21 m

Measure

Move the map and add points to measure distances and area

Length
11.21 m

Heading
283.56°

Advanced measurements

Elevation estimate
Min: 627.54 m | Median: 627.58 m | Max: 627.6 m

Slope estimate
Min: 0° | Median: 0.4° | Max: 0.4°

SH-59



11.33 m



Measure



Move the map and add points to measure distances and area

Length

11.33 m

Heading

279.13°

Advanced measurements

Elevation estimate

Min: 627.44 m | Median: 627.54 m |

Max: 627.59 m

Slope estimate

Min: 0.3° | Median: 0.5° | Max: 2.4°

+ Add point

Done



17 West Shoreline Lane, Sagle, ID



3D

100 m

23.74 m

Measure



Move the map and add points to measure distances and area

Length

23.74 m

Heading

278.97°

Advanced measurements

Elevation estimate

Min: 627.4 m | Median: 627.51 m |

Max: 627.73 m

Slope estimate

Min: 0° | Median: 0.8° | Max: 2.3°

+ Add point

Done



10 m

16.53 m

Measure



Move the map and add points to measure distances and area

Length

16.53 m

Heading

258.11°

Advanced measurements

Elevation estimate

Min: 627.77 m | Median: 627.91 m |

Max: 628.06 m

Slope estimate

Min: 0.8° | Median: 0.9° | Max: 1.6°

+ Add point

Done



16.53 m

Measure

Move the map and add points to measure distances and area

Length
16.53 m

Heading
258.11°

Advanced measurements

Elevation estimate
Min: 627.77 m | Median: 627.91 m | Max: 628.06 m

Slope estimate
Min: 0.8° | Median: 0.9° | Max: 1.6°

+ Add point

Done

12:44 PM Sat Apr 4



17 West Shoreline Lane, Sagle, ID



11%



3D

20 m

11.21 m

Measure



Move the map and add points to measure distances and area

Length
11.21 m

Heading
283.56°

Advanced measurements

Elevation estimate

Min: 627.54 m | Median: 627.58 m | Max: 627.6 m

Slope estimate

Min: 0° | Median: 0.4° | Max: 0.4°

+ Add point

Done



11.33 m

Measure

Move the map and add points to measure distances and area

Length
11.33 m

Heading
279.13°

Advanced measurements

Elevation estimate
Min: 627.44 m | Median: 627.54 m | Max: 627.59 m

Slope estimate
Min: 0.3° | Median: 0.5° | Max: 2.4°

12:49 PM Sat Apr 4



17 West Shoreline Lane, Sagle, ID



11%



3D

100 m

23.74 m

Measure



Move the map and add points to measure distances and area

Length

23.74 m

Heading

278.97°

Advanced measurements

Elevation estimate

Min: 627.4 m | Median: 627.51 m |

Max: 627.73 m

Slope estimate

Min: 0° | Median: 0.8° | Max: 2.3°

+ Add point

Done