



Idaho Shared Stewardship



Northern and Southern Priority Landscapes

July 2020

BACKGROUND

In December 2018, the Idaho Shared Stewardship Agreement between the U.S. Department of Agriculture and State of Idaho was signed.

6.1 million acres of National Forest System lands near communities in Idaho are experiencing a combination of high wildfire hazard, above-normal levels of insect and disease mortality, and other restoration treatment needs.

94% of endowment timberlands are adjacent to federal forests.

Building on the success of Idaho's Good Neighbor Authority (GNA) the new *Shared Stewardship* approach is taking shape.

Shared Stewardship is a partnership between the Forest Service and the Idaho Department of Lands that emphasizes doing the right forest management, in the right places, at the right time and scale to protect communities and the places where people love to recreate.

State and federal officials are working with diverse partners and forest collaborative groups, to prioritize areas for treatment, improve coordination with adjacent forestland owners, and better leverage limited resources to tackle at risk watersheds.

Shared Stewardship will result in:

- Coordination with willing private landowners to define and implement cross-boundary projects.
- Building a holistic approach to reducing threats of wildfires and improve the health of Idaho's forests, rangelands and watersheds through various restoration activities, including prescribed fire, fuel reduction, harvesting, thinning treatments, weeds projects, and stream work.
- Doubling the number of acres treated on National Forest System lands in Idaho by 2025, focusing treatment on the 6.1 million acres at risk of insect and disease infestation.

Southern Priority Landscape

2.2 million acres in size with 2 initial focal areas.

- * 171,42 acres located in northern Valley and eastern Adams counties
- * 318,561 acres located in Valley and Gem Counties
- Planned 2020 Boise and Payette National Forests projects include:
 - * Timber sales totaling 30 million board feet (total forests: 54 million board feet)
 - * Restoration activities that include thinning and prescribed fire on 8,360 acres
- Planned forest treatments on private forestlands include:
 - * 400 acres of fuels –reduction treatment, providing wildfire risk reduction around dozens of homes
- Projected 2021 Landscape restoration activities include 23,679 acres of federal , 4,194 acres of state, and 90 acres of private land.

Northern Priority Landscape

2 million acres in size with 2 initial focal areas.

- * 175,644 acres located in southwest Bonner County
- * 164,335 acres located in eastern Kootenai County
- Planned 2020 Idaho Panhandle National Forests projects include:
 - * Timber sales totaling 1.3 million board feet (total forests: 60 million board feet)
 - * Restoration activities that include thinning and prescribed fire on 2,015 acres.
- Planned forest treatments on private forestlands include:
 - * 1700 acres of fuels-reduction treatments, providing wildfire risk reduction around hundreds of homes
- Projected 2021 Landscape restoration activities include 6,565 acres of federal, 4,730 acres of state, and 343 acres of private land.



Sage Hen Reservoir—Trees killed from Douglas fir Tussock Moth infestation



Shared Stewardship Funding

Nearly \$5 million have been invested in Shared Stewardship in Idaho.

\$3.9 million in grants and funding sources for cross-boundary projects in both landscapes.

\$800,000 in federal grants will help fund salaries, contractors' costs and operating expenses to administer the cross-boundary projects.

\$250,000 was allocated by the State of Idaho to facilitate Shared Stewardship treatments on private lands.

Projects in Focal Areas

Northern Priority Landscapes

1. Scattered Lands Project

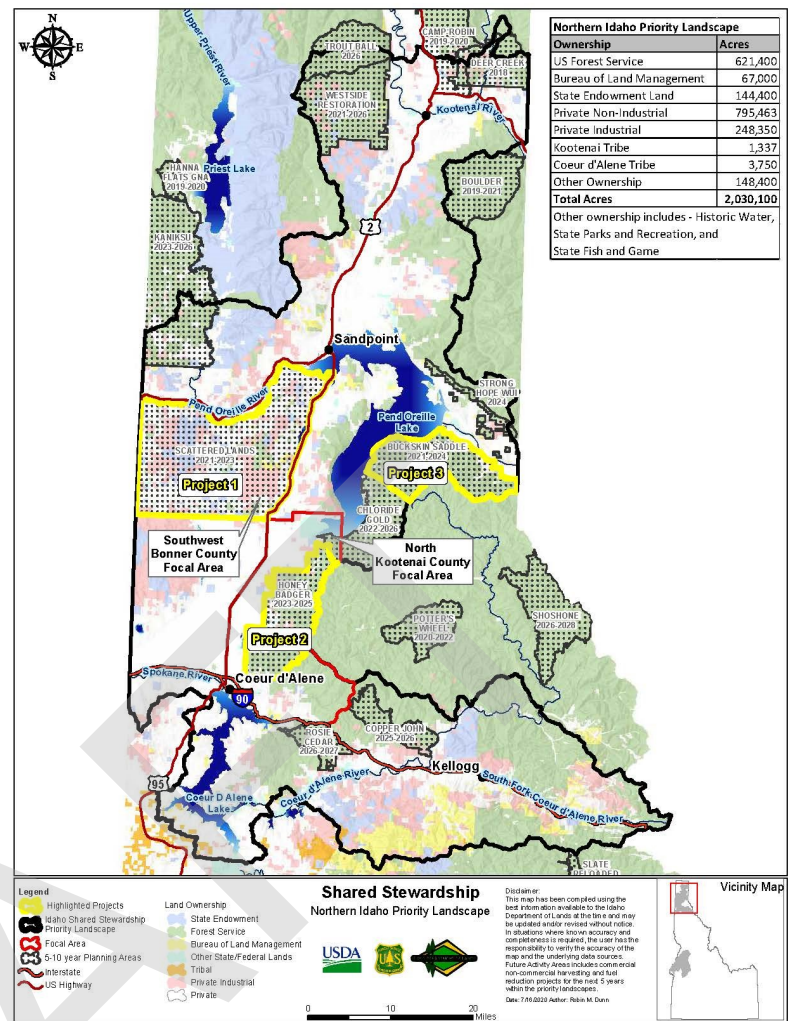
- Environmental planning in progress, estimated completion —Fall 2020
- 5700 acres of restoration activities

2. Honey Badger Project

- Environmental planning in progress, estimated completion—Fall 2020
- 18,500 acres restoration activities

3. Buckskin Saddle Integrated Restoration Project

- Environmental planning in progress, estimated completion—Fall 2020
- 19,700 acres restoration activities



Southern Priority Landscapes

1. Lost Horse Project

- Environmental planning completed June 19, 2020
- 7,234 acres to be thinned
- 5,586 acres to be treated with prescribed fire

2. Little Weiser Forest Resilience Project

- Environmental planning in progress, estimated completion—Fall 2020
- 3,000 acres restoration activities

3. Sage Hen Integrated Restoration Project

- Environmental planning in progress, estimated completion—Fall 2020
- 67,000 acres restoration activities

4. Granite Meadows Project

- Environmental planning in progress, estimated completion—Fall 2021
- 73,000 acres restoration activities

