

# FISCAL YEAR 2017 TIMBER SALES PLAN



*Photo Credit: Erik Sjoquist, Forester, Idaho Department of Lands*

# IDAHO DEPARTMENT OF LANDS FY17 TIMBER SALE PLAN

July 1, 2016 – June 30, 2017

## Table of Contents

Types of Sales .....	3
Supervisory Area Offices .....	4
Administrative Rules and Purchaser Sale Requirements .....	6
Priest Lake .....	7
Pend Oreille Lake .....	10
Mica .....	14
St. Joe .....	16
Clearwater .....	20
Ponderosa .....	23
Maggie Creek .....	26
Payette Lakes .....	28
Southwest .....	30
Eastern .....	31

# IDAHO DEPARTMENT OF LANDS FY17 TIMBER SALE PLAN

July 1, 2016 – June 30, 2017

## Types of Sales

### Timber Sales

Timber sales contain an estimated volume of at least 1,000 MBF and exceed the net appraised stumpage value for salvage sales established by the State Board of Land Commissioners. Timber sales are designed to produce maximum financial returns to the endowment funds consistent with prudent long-term management practices.

Timber sales are advertised for four weeks in a newspaper in the county where the sale is located, and are sold at public auction. In addition to publication in the county newspaper, the advertisement is also posted to the Idaho Department of Lands timber sales website at:

<https://apps.idl.idaho.gov/timbersale/Search.aspx>

### Direct Sales

Direct Sale net appraised stumpage value does not exceed the maximum value established by the State Board of Land Commissioners. This type of sale is to be used to harvest isolated or by-passed timber parcels of insufficient value and volume to justify a salvage sale. The direct sale is not used where two or more potential purchasers may be interested in bidding on the forest products offered for sale.

The direct sale of forest product stumpage is made without advertisement as authorized by the Director.

# IDAHO DEPARTMENT OF LANDS FY17 TIMBER SALE PLAN

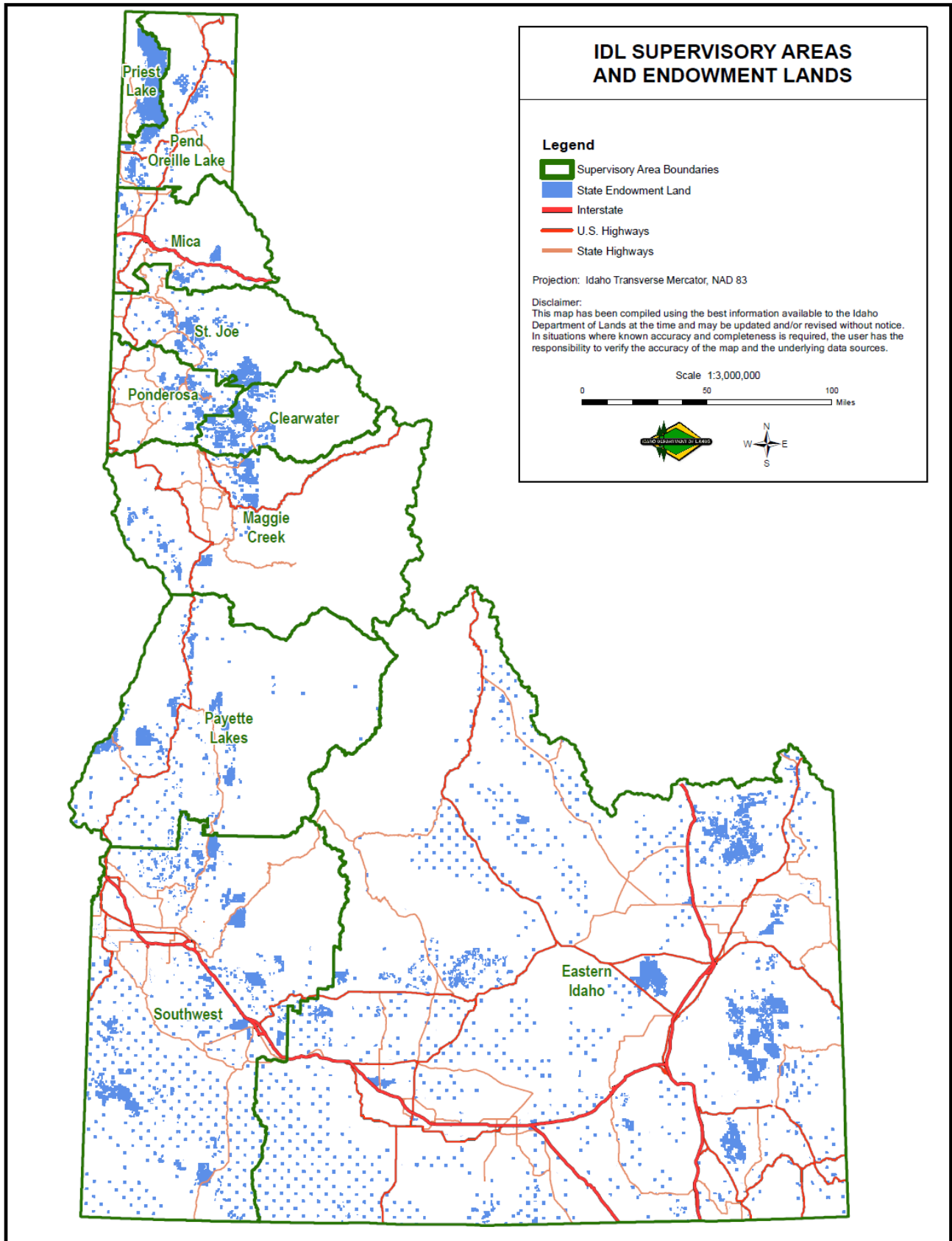
July 1, 2016 – June 30, 2017

Supervisory Area Offices

<b>SUPERVISORY AREA</b>	<b>AREA SUPERVISOR</b>	<b>PHONE</b>
<b>Priest Lake</b> 4053 Cavanaugh Bay Road Coolin, ID 83821	Mick Schanilec	(208) 443-2516
<b>Pend Oreille Lake</b> 2550 Highway 2 West Sandpoint, ID 83864	Tom Fleer	(208) 263-5104
<b>Mica</b> 3706 Industrial Avenue S Coeur d'Alene, ID 83815	Frank Waterman	(208) 769-1577
<b>St. Joe</b> 1806 Main Avenue St. Maries, ID 83861	Richard Furman	(208) 245-4551
<b>Ponderosa</b> 3130 Highway 3 Deary, ID 83823	Mark Lesko	(208) 877-1121
<b>Clearwater</b> 10230 Highway 12 Orofino, ID 83544	Jay Sila	(208) 476-4587
<b>Maggie Creek</b> 913 Third Street Kamiah ID 83536	Zoanne Anderson	(208) 935-2141
<b>Payette Lakes</b> 555 Deinhard Lane McCall, ID 83638	Scott Corkill	(208) 634-7125
<b>Southwest/South Central</b> 8355 W. State Street Boise, ID 83703	Bob Pietras	(208) 334-3488
<b>Eastern Idaho</b> 3563 Ririe Highway Idaho Falls, ID 83401	Pat Brown	(208) 525-7167

# IDAHO DEPARTMENT OF LANDS FY17 TIMBER SALE PLAN

July 1, 2016 – June 30, 2017



# IDAHO DEPARTMENT OF LANDS FY17 TIMBER SALE PLAN

July 1, 2016 – June 30, 2017

## Administrative Rules and Purchaser Sale Requirements

*Links to detailed information on the internet are provided below.*

### Administrative Rules of the Department of Lands

#### [20.02.14 – Selling Forest Products on State-Owned Endowment Lands](#)

For information regarding timber sale procedures, bidding procedures, bonding requirements and insurance requirements, click on the link below.

#### [Purchaser Sale Requirements](#)

# IDAHO DEPARTMENT OF LANDS FY17 TIMBER SALE PLAN

July 1, 2016 – June 30, 2017

## Priest Lake Supervisory Area

SALE NO.	SALE NAME	SUBDIVISION	SEC	T & R	APPROXIMATE	
					ACREAGE	VOLUME
1	<b>Mollie Gasp</b>	Pts. W2SW	5	63N/4W	260	2,500 MBF
		Pts. Govt. Lots 5, 6 & 7	6	63N/4W		
		Pts. S2NE, Pts. E2SW, Pts. SE	6	63N/4W		
		Pts. Govt. Lot 1	7	63N/4W		
		Pts. N2NE, Pts. NENW	7	63N/4W		
		Pts. NWNW	8	63N/4W		

Estimated Auction: Summer 2016

This sale is located within the Trapper Creek drainage approximately 26 air miles north of Coolin, Idaho in Bonner County. This sale will be harvested by using an overstory removal method. Ground based yarding will be required on this sale. Developments will include approximately 4.0 miles of main road, 4.0 miles of secondary road and 4.0 miles of spur road improvement. All seasonal roads within the sale will be closed with earthen berms or locked gates after conclusion of sale activities. Trapper Creek is a Class I stream and not within 75 feet of the sale area. There are several Class II perennial and intermittent streams within or adjacent to the sale area.

2	<b>Caribou Flatten</b>	Pts. E2	4	62N/4W	200	2,400 MBF
		Pts. SWNE, Pts. SENW, Pts. E2SW	23	62N/4W		
		Pts. NW, Pts. N2SW, Pts. SWSW	26	62N/4W		
		Pts. SENW, Pts. E2SW, Pts. SESE	27	62N/4W		
		Pts. NE, NENW, Pts. S2NW, Pts. SW	34	63N/4W		

Estimated Auction: Spring 2017

This sale is located within the Caribou Creek drainage approximately 22 air miles north from Coolin, Idaho in Bonner County. The harvest prescription for this sale area will include a combination of small to medium size clearcuts, seed tree and shelterwoods. Ground based yarding with cut-to-length and forwarding methods will be required on some units. Developments will include 0.5 mile of new spur road construction, 3.0 miles of secondary road reconstruction, 2.0 miles of spur road reconstruction and 10.0 miles of main road improvement. All secondary and spur roads within the sale will be closed with earthen berms after conclusion of sale activities. Unit boundaries will be located at least 75 feet away from Caribou Creek, a Class I stream. An un-named Class I intermittent stream and a few Class II intermittent streams are present within the sale area.

3	<b>Two Mouth Pieces</b>	Pts. Govt. Lot 4, Pts. SESW	19	62N/3W	350	3,100 MBF
		Pts. Govt. Lot 1, Pts. NENW	30	62N/3W		
		Pts. W2NE, Pts. SENW	24	62N/4W		
		Pts. NESW, Pts. S2SW, Pts. SE	24	62N/4W		
		Pts. N2, Pts. N2SW	25	62N/4W		
		Pts. SENE, Pts. NESE	26	62N/4W		

Estimated Auction: Summer 2016

This sale is located within the Two Mouth Creek drainage approximately 15 air miles north from Coolin, Idaho in Bonner and Boundary Counties. This sale will be harvested involving a combination of clearcut, seed tree and overstory removal methods. Ground based yarding methods will be required. Developments will include 2.0 miles of spur road reconstruction, 3.4 miles of secondary road improvement and 4.6 miles of spur road improvement. Two Mouth Creek is a Class I stream and is more than 700 feet from the sale area. There are several un-named Class II intermittent streams within the sale area.

## IDAHO DEPARTMENT OF LANDS FY17 TIMBER SALE PLAN

July 1, 2016 – June 30, 2017

### Priest Lake Supervisory Area

SALE NO.	SALE NAME	SUBDIVISION	SEC	T & R	APPROXIMATE	
					ACREAGE	VOLUME
4	<b>Chimney Sweep Pulp</b>	Pts. SESW	19	61N/3W	265	1,900 MBF
		Pts. S2NE, Pts. E2SW, Pts. SE	20	61N/3W		2,550 Pulp
		Pts. SWNW, Pts. W2SW	21	61N/3W		
		Pts. NWNW	28	61N/4W		
		Pts. NE, Pts. NENW	29	61N/3W		
		Pts. N2NE, Pts. NENW	30	61N/3W		
		Pts. W2NE, Pts. NW, Pts. NWSW	24	63N/4W		
		Pts. W2NW, Pts. SENW	25	63N/4W		

Estimated Auction: Summer 2016

This sale is located within the South Fork of Indian Creek and Caribou Creek drainages approximately 11 to 20 air miles north and northeast of Coolin, Idaho in Bonner and Boundary Counties. Harvest prescriptions will involve seed tree and clearcut methods. Ground based and cable yarding will be required on this sale. Developments include the reconstruction of 3.5 miles of spur road and 0.5 mile of new spur road construction. The South Fork of Indian Creek and Caribou Creek are Class I streams and are not within the sale area. There are a few Class II un-named perennial and intermittent streams within the sale area.

5	<b>Colonel Camel</b>	Pts. S2SW	20	60N/3W	400	2,500 MBF
		Pts. N2NW, Pts. SWNW, Pts. N2SW	29	60N/3W		
		Pts. Govt. Lots 2, 3 & 4, Pts. NE	30	60N/3W		
		Pts. E2NW, Pts. E2SW, Pts. N2SE	30	60N/3W		
		Pts. NESE, Pts. S2SE	25	60N/3W		
		Pts. N2NE	36	60N/3W		

Estimated Auction: Spring 2017

This sale is located within the Soldier Creek drainage approximately 4 air miles northeast of Coolin, Idaho in Bonner and Boundary Counties. The silvicultural prescription will be an overstory removal. Timber harvesting will require ground based and cable yarding. Developments will involve 2.0 miles of secondary road improvement and 8.0 miles of spur road improvement. Soldier Creek is a Class I stream and is not within the sale. There are a few intermittent and perennial Class II un-named streams present and within the sale area.

6	<b>Lee Meadow</b>	Pts. SWNW, Pts. NWSW, Pts. S2SE	2	59N/4W	250	1,900 MBF
		Pts. Govt. Lots 1 & 3, Pts. SENE	3	59N/4W		
		Pts. NE, Pts. E2NW, Pts. S2	11	59N/4W		
		Pts. W2NW	12	59N/4W		
		Pts. N2NE, Pts. SWNE, Pts. E2NW	14	59N/4W		
		Pts. SENE, Pts. NESE	34	60N/4W		
		Pts. N2NW, Pts. SWNW	35	60N/4W		
		Pts. NWSW, Pts. W2SE	35	60N/4W		

Estimated Auction: Spring 2017

This sale is located within the Lee Creek and Soldier Creek drainages approximately 1 to 5 air miles north to northeast of Coolin, Idaho in Bonner County. A combination of silvicultural prescriptions will involve clearcut, seed tree and shelterwood harvesting regimes. Harvesting will involve ground based and cable yarding methods. Developments include 4.0 miles of secondary road improvement and 2.0 miles of spur road improvement. Fenton Creek, Lee Creek and Soldier Creek are Class I streams adjacent to the sale area but not 75 feet of the sale boundary. There are un-named Class II perennial and intermittent streams within the sale area.



# IDAHO DEPARTMENT OF LANDS FY17 TIMBER SALE PLAN

July 1, 2016 – June 30, 2017

## Priest Lake Supervisory Area

SALE NO.	SALE NAME	SUBDIVISION	SEC	T & R	APPROXIMATE ACREAGE	VOLUME
<b>7</b>	<b>Get Lost</b>	Pts. NESW, Pts. S2SW, Pts. SE	24	59N/4W	305	2,600 MBF
		Pts. N2NE, Pts. N2NW, Pts. W2SW	25	59N/4W		
		Pts. SE	26	59N/4W		
		Pts. NENE	35	59N/4W		
		Pts. NWNW	36	59N/4W		

Estimated Auction: Spring 2017

This sale is located within the Lost Creek drainage approximately 4 air miles southeast from Coolin, Idaho in Bonner County. This sale will be harvested utilizing a combination of seed tree, overstory removal and clearcut harvest methods. Ground based and cable yarding will be required on this sale. Developments will include 2.0 miles of main road, 2.0 miles of secondary road and 2.0 miles of spur road reconstruction. Approximately 0.5 mile of spur road will be constructed. Lost Creek is a Class I stream and is not within 75 feet of the sale boundary. Several Class II streams are within the sale area and directly adjacent to the sale area.

<b>8</b>	<b>Winnie Dawg OSR</b>	Pts. SWNW, Pts. SW	1	58N/4W	175	900 MBF
		Pts. SESE	2	58N/4W		
		Pts. NENE, Pts. S2NE, Pts. SE	11	58N/4W		
		Pts. N2SW	12	58N/4W		
		Pts. NENE	14	59N/4W		

Estimated Auction: Summer 2016

This sale is located within the North Fork East River drainage, approximately 6 air miles southeast of Coolin, Idaho in Bonner County. The harvest prescription involves an overstory removal. The entire sale area will be ground based yarded. Developments will include 1.0 mile of main road, 3.0 miles of secondary road and 2.0 miles of spur road improvements. There are no Class I or Class II streams within the sale area.

<b>Additional small volume sales:</b>	100	200 MBF
<b>TOTALS:</b>		
	2,305	18,000 MBF 2,550 Pulp

# IDAHO DEPARTMENT OF LANDS FY17 TIMBER SALE PLAN

July 1, 2016 – June 30, 2017

Pend Oreille Lake  
Supervisory Area

SALE NO.	SALE NAME	SUBDIVISION	SEC	T & R	APPROXIMATE ACREAGE	APPROXIMATE VOLUME
<b>1</b>	<b>Mountain Meadows</b>	Pts. SW, Pts. SWSE	13	55N/5W	450	3,000 MBF
		Pts. E2	14	55N/5W		
		Pts. NENE	23	55N/5W		
		Pts. Govt. Lots 1-3, W2NE, Pts. NW	24	55N/5W		

Estimated Auction: Spring of 2017

The sale area is located approximately 5 air miles south of Priest River, Idaho within stream drainages leading to Mountain Meadows. The sale will utilize seed tree silvicultural prescriptions. Ground based and cable yarding will be required. Approximately 2.0 miles of secondary and 3.0 miles of spur road will be constructed. Class II streams are present within to the sale area.

<b>2</b>	<b>Pine Grove</b>	Pts. SE, Pts. NESW, Pts. S2SW	21	57N/4W	350	4,000 MBF
		Pts. S2NW, Pts. SW, Pts. NWSE	27	57N/4W		
		Pts. SENE, Pts. N2NW, E2SE	28	57N/4W		
		Pts. NWNW	34	57N/4W		

Estimated Auction: Fall 2016

The sale area is located approximately 6 air miles northeast of Priest River, Idaho within the Blue Creek and Little Pine Creek drainages. The sale will utilize both shelterwood and seed tree silvicultural prescriptions. Ground based and cable yarding will be required. Approximately 5.0 miles of spur road will be opened and 1.0 mile of new spur road will be constructed. Class II streams are present within to the sale area.

<b>3</b>	<b>PBO</b>	Pts. Govt. Lot 4, Pts. SESW	7	57N/3W	300	1,500 MBF
		Pts. Govt. Lots 1-3, Pts. E2NW	18	57N/3W		
		Pts. S2SE	11	57N/4W		
		Pts. S2SW	12	57N/4W		
		Pts. E2NE, Pts. NW	13	57N/4W		
		Pts. NE	14	57N/4W		

Estimated Auction: Fall 2016

The sale area is located approximately 10 air miles northeast of Priest River, Idaho within the Blue Creek drainage. The sale will utilize an overstory removal silvicultural prescription. Ground based yarding will be required. Approximately 4.0 miles of secondary and 2.0 miles of spur road will be opened. Class II streams are present within the sale area.

<b>4</b>	<b>Juicyfruit</b>	Pts. SWNW, Pts. SW	10	56N/5W	76	1,000 MBF
----------	-------------------	--------------------	----	--------	----	-----------

Estimated Auction: Summer 2016

This sale is located approximately 3 air miles northwest of Priest River, Idaho within an unnamed tributary drainage to the Pend Oreille River. The sale will utilize a clearcut silvicultural prescription. Ground based and cable yarding will be required. Approximately 5.0 miles of secondary road will be opened. Class II streams are present within to the sale area.

# IDAHO DEPARTMENT OF LANDS FY17 TIMBER SALE PLAN

July 1, 2016 – June 30, 2017

Pend Oreille Lake  
Supervisory Area

SALE NO.	SALE NAME	SUBDIVISION	SEC	T & R	APPROXIMATE	
					ACREAGE	VOLUME
<b>5</b>	<b>South Tower</b>	Pts. Govt. Lot 6, Pts. SWSW	1	54N/5W	590	4,000 MBF
		Pts. S2	2	54N/5W		
		Pts. NE, Pts. E2SE	11	54N/5W		
		Pts. Govt. Lot 1, Pts. NWNE	12	54N/5W		
		Pts. NENW, Pts. SWNW, Pts. NWSW	12	54N/5W		
		Pts. Govt. Lot 1, S2NE, SESW, SE	14	54N/5W		
		Pts. NW	24	54N/5W		
		Pts. E2SE	27	55N/5W		
		Pts. NWNE, Pts. E2NW	34	55N/5W		

Estimated Auction: Spring 2017

This sale is located approximately 3 air miles northeast of Blanchard, Idaho in the South Hoodoo area and North Fork of McDonald Creek drainage. This sale will utilize shelterwood, overstory removal, and clearcut silvicultural prescriptions. Ground based and cable yarding will be required. Approximately 15.0 miles of secondary road will be opened, 2.0 miles of secondary road will be reconstructed, and 2.0 miles of new secondary road will be constructed. Class II streams are present within to the sale area.

<b>6</b>	<b>Three Sister Saw</b>	Pts. SE	9	54N/2W	170	1,700 MBF
		Pts. E2NE	16	54N/2W		

Estimated Auction: Fall 2016

This sale is located approximately 11 air miles northeast of Athol, Idaho in the Three Sisters Creek drainage. This sale will utilize shelterwood and clearcut silvicultural prescriptions. Ground based and cable yarding will be required. Approximately 10.0 miles of secondary road will be opened and approximately 1.0 mile of secondary road will be constructed. Class II streams are present within to the sale area.

<b>7</b>	<b>Highland</b>	Pts. SESW, Pts. S2SE	7	57N/3W	250	1,600 MBF
		Pts. S2SW	8	57N/3W		
		Pts. N2NW	17	57N/3W		
		Pts. N2NE, Pts. NENW	18	57N/3W		

Estimated Auction: Summer 2016

This sale is located approximately 12 air miles northeast of Priest River, Idaho in the Blue Creek drainage. This sale will utilize seed tree and overstory removal silvicultural prescriptions. Ground based yarding will be required. Approximately 6.0 miles of secondary road and 3.0 miles of spur road will be opened and approximately 0.1 mile of new spur road constructed. Class II streams are present within to the sale area.

## IDAHO DEPARTMENT OF LANDS FY17 TIMBER SALE PLAN

July 1, 2016 – June 30, 2017

Pend Oreille Lake  
Supervisory Area

SALE NO.	SALE NAME	SUBDIVISION	SEC	T & R	APPROXIMATE	
					ACREAGE	VOLUME
<b>8</b>	<b>Priest Blessed Poles</b>	Pts. Govt. Lots 2-7, Pts. SWNE	6	55N/5W	150	200 MBF 2,000 Poles
		Pts. E2SW	6	55N/5W		
		Pts. Govt. Lots 3-4, Pts. W2	24	55N/5W		
		Pts. W2SE	24	55N/5W		
		Pts. Govt. Lots 1-4, Pts. W2E2	25	55N/5W		
		Pts. W2	25	55N/5W		
		Pts. E2	26	55N/5W		
		Pts. Govt. Lots 1-2, Pts. W2NE	36	55N/5W		
		Pts. E2NW	36	55N/5W		

Estimated Auction: Spring 2017

The sale area is located approximately 7 air miles south of Priest River, Idaho within stream drainages leading to Mountain Meadow and Pend Oreille River. The sale will utilize a selective silvicultural prescription to remove cedar poles. Ground based and cable yarding will be required. Approximately 2.0 miles of secondary and 3.0 miles of spur road will be constructed. Class II streams are present within to the sale area.

<b>9</b>	<b>Sandstorm</b>	Pts. Govt. Lot 3, Pts. S2NE	2	60N/1E	1,500	4,700 MBF
		Pts. SENW, Pts. N2SE	2	60N/1E		
		Pts. NE, Pts. E2NW, Pts. NESW	10	60N/1E		
		Pts. SE	10	60N/1E		
		Pts. NE, Pts. N2SE	19	60N/1E		
		Pts. W2NE, Pts. NW, Pts. N2SW	20	60N/1E		
		Pts. SESW, NWNWSE, S2NWSE	20	60N/1E		
		SWSE, Pts. SWSESE	20	60N/1E		
		Pts. NWNW, Pts. NENW	29	60N/1E		
		Pts. Govt. Lots 2-4, Pts. W2NE	30	60N/1E		
		Pts. E2NW, Pts. E2SW, Pts. NWSE	30	60N/1E		
		Pts. Govt. Lots 2-4, Pts. SWNE	31	60N/1E		
		Pts. E2NW, Pts. E2SW, Pts. SE	31	60N/1E		
		Pts. SENE, S2NWSW, Pts. NESW	25	60N/1W		
		Pts. S2SW, Pts. N2SE, Pts. SWSE	25	60N/1W		
		Pts. S2SE	26	60N/1W		
		Pts. SENE, Pts. SE	36	60N/1W		
		Pts. N2, Pts. NWSWSE	6	59N/1W		

Estimated Auction: Winter 2017

The sale area is located approximately 4 air miles southeast of Naples, Idaho in the Trail Creek, Twentymile Creek, and Sand Creek drainages. The sale will utilize overstory removal and seed tree silvicultural prescriptions. Ground based and cable yarding will be required. Approximately 0.5 mile of spur road will be constructed. Approximately 2.5 miles of spur road will be reconstructed. Approximately 7.0 miles of secondary and 13.0 miles of spur road will be opened. Class II streams are present within to the sale area.

# IDAHO DEPARTMENT OF LANDS FY17 TIMBER SALE PLAN

July 1, 2016 – June 30, 2017

Pend Oreille Lake  
Supervisory Area

SALE NO.	SALE NAME	SUBDIVISION	SEC	T & R	APPROXIMATE ACREAGE	APPROXIMATE VOLUME
<b>10</b>	<b>Lightning</b>	Pts. S2NW, Pts. NWSW	4	58N/1E	60	600 MBF

Estimated Auction: Fall 2016

The sale area is located approximately 12 air miles northeast of Sandpoint, Idaho in the Gold Creek drainage. The sale will utilize seed tree and clearcut silvicultural prescriptions. Ground based yarding will be required. Approximately 1.5 miles of spur road will be opened. Class I and Class II streams are present within the sale area.

<b>11</b>	<b>Bonnet Top</b>	Pts. All	16	57N/3W	250	2,000 MBF
-----------	-------------------	----------	----	--------	-----	-----------

Estimated Auction: Spring 2017

The sale area is located approximately 6 air miles west of Sandpoint, Idaho in the Smith Creek drainage. The sale will utilize a seed tree and overstory removal silvicultural prescriptions. Ground based and cable yarding will be required. Approximately 5.0 miles of spur road will be opened. Class I (domestic) and Class II streams are present.

<b>Additional small volume sales:</b>	100	300 MBF
---------------------------------------	-----	---------

<b>TOTALS:</b>	4,246	24,600 MBF 2,000 Poles
----------------	-------	---------------------------

# IDAHO DEPARTMENT OF LANDS FY17 TIMBER SALE PLAN

July 1, 2016 – June 30, 2017

Mica  
Supervisory Area

SALE NO.	SALE NAME	SUBDIVISION	SEC	T & R	APPROXIMATE	
					ACREAGE	VOLUME
1	<b>Upper Lost Creek</b>	Pts. S2SW	15	52N/5W	202	2,445 MBF
		Pts. SE	16	52N/5W		
		Pts. SWNE, Pts. NW	22	52N/5W		
		Pts. NWSW	22	52N/5W		

Estimated Auction: Summer 2016

This sale is located approximately 3 air miles northwest of Rathdrum, Idaho in the Lost Creek drainage. Seed tree and clearcut prescriptions will be used. This sale will utilize both ground based and cable based yarding methods. Approximately 0.05 mile of main road; 1.64 miles of secondary road; and 0.32 mile of spur road will be reconstructed. Approximately 2.43 miles of spur road will be opened. Approximately 0.7 mile of spur road will be abandoned. Class II streams are present within the sale area.

2	<b>Mistletoe Ridge</b>	Pts. Govt. Lot 2	36	50N/6W	207	1,900 MBF
		Govt. Lots 3 & 4	36	50N/6W		
		Pts. S2NE, Pts. NWNE	36	50N/6W		
		Pts. E2NW, Pts. NESW	36	50N/6W		
		SESW, Pts. N2SE, Pts. SWSE	36	50N/6W		

Estimated Auction: Spring 2017

This sale is located approximately 7 air miles southwest of Post Falls, Idaho in the Cable Creek drainage. Selective cut and clearcut prescriptions will be used. The sale will utilize both ground based and cable based yarding methods. Approximately 3.43 miles of secondary road and 1.73 miles of spur road will be opened. Class II streams are within and adjacent to the sale area. Cable Creek, a Class I stream, is adjacent to one unit but there will be no cutting within the stream protection zone.

3	<b>Watson Ridge</b>	Pts. S2NW, Pts. SW	31	48N/5E	242	3,000 MBF
		Pts. NWSE	31	48N/5E		
		Pts. S2NE, Pts. E2SW	36	48N/4E		
		Pts. SE	36	48N/4E		

Estimated Auction: Summer 2016

This sale is located approximately 1.5 air miles east of Wallace, Idaho in the Rock Creek and Watson Gulch drainages. Shelterwood, overstory removal, and clearcut harvest prescriptions will be used. The sale will utilize both cable yarding and ground based skidding methods. Approximately 0.75 mile of secondary road will be constructed and 7.5 miles of secondary roads will be opened. Class II streams are adjacent to the sale area.

**IDAHO DEPARTMENT OF LANDS FY17 TIMBER SALE PLAN**

July 1, 2016 – June 30, 2017

Mica  
Supervisory Area

SALE NO.	SALE NAME	SUBDIVISION	SEC	T & R	APPROXIMATE	
					ACREAGE	VOLUME
4	<b>Upper Skeel</b>	Pts. NWNE, Pts. S2NE	16	48N/1E	530	4,800 MBF
		Pts. NENW, Pts. S2NW	16	48N/1E		
		Pts. S2	16	48N/1E		
		Pts. E2SE	17	48N/1E		
		Pts. Govt. Lots 1-5, Pts. NENW	31	48N/1W		
		Pts. N2NE	36	48N/2W		

Estimated Auction: Spring 2017

This sale is located approximately 2.5 air miles south of Cataldo, Idaho in the Skeel Gulch drainage. Shelterwood, overstory removal and clearcut harvest prescriptions will be used. The sale will utilize both cable yarding and ground based skidding methods. Approximately 0.25 mile of secondary road and 4.0 miles of spur road will be constructed. Approximately 3.2 miles of secondary road and 1.6 miles of spur road will be opened. Skeel Gulch, a Class I stream, is adjacent to several units but there will be no cutting within the stream protection zone. Class II streams are present within the sale area.

5	<b>Brickel Sawlog</b>	Pts. Govt. Lots 4-7, Pts. SESW	18	53N/5W	473	2,355 MBF
		Pts. Govt. Lots 1 & 2, Pts. E2NW	19	53N/5W		
		Pts. E2, Pts. SESW	13	53N/6W		
		Pts. NE, Pts. NENW, Pts. NESE	24	53N/6W		

Estimated Auction: Fall 2016

This sale is located approximately 7 air miles west of Spirit Lake, Idaho in the Brickel Creek drainage. Seed tree and shelterwood prescriptions will be used. This sale will utilize both ground based and cable yarding methods. Approximately 12.34 miles of road will be opened. Class I and Class II streams are present with the sale area.

6	<b>Westwood</b>	Pts. Govt. Lot 2, NE	24	52N/5W	263	1,500 MBF
		Pts. E2NW, Pts. NWSE	24	52N/5W		

Estimated Auction: Winter 2017

This sale is located approximately 1.5 air miles north of Rathdrum, Idaho in the Spring Creek drainage. Seed tree and shelterwood prescriptions will be used. This sale will utilize both ground based and cable yarding methods. Approximately 0.85 mile of secondary road and 5.79 miles of spur road will be reconstructed. Class I and Class II streams are present within the sale area.

**Additional small volume sales:** 0 0 MBF

**TOTALS:** 1,917 16,000 MBF

# IDAHO DEPARTMENT OF LANDS FY17 TIMBER SALE PLAN

July 1, 2016 – June 30, 2017

St. Joe  
Supervisory Area

SALE NO.	SALE NAME	SUBDIVISION	SEC	T & R	APPROXIMATE	
					ACREAGE	VOLUME
1	<b>Lindstrom Bowl Ton</b>	Pts. NWNE, Pts. S2NE	11	45N/2W	254	6,680 MBF (37,540 Tons) 100 MBF Cedar Products
		Pts. SENW, Pts. E2SW, Pts. SE	11	45N/2W		
		Pts. SWNW, Pts. W2SW	12	45N/2W		
		Pts. NWNW	13	45N/2W		
		Pts. N2NE, Pts. NENW	14	45N/2W		

Estimated Auction: Fall 2016

This sale is located approximately 4 air miles south southwest of St. Maries, Idaho in the Syringa Creek and St. Maries River drainages. The silvicultural prescription includes a shelterwood/seed tree harvest. Both tractor skidding and cable yarding will be utilized. Developments include approximately 1.5 miles of new secondary road opening. Several Class II streams are present within the sale area.

2	<b>Top of Tyson Ton</b>	Pts.	8	43N/1W	234	5,600 MBF (31,470 Tons) 300 MBF Cedar Products
		Pts. S2	14	43N/1W		
		Pts.	16	43N/1W		
		Pts. N2	17	43N/1W		
		Pts.	21	43N/1W		
		Pts.	36	43N/1W		
		Pts. E2	35	44N/1W		
		Pts. W2	36	44N/1W		

Estimated Auction: Summer 2016

This sale is located approximately 4 air miles southwest of Fernwood, Idaho in the Tyson Creek, Little Carpenter Creek, West Fork Emerald Creek and St. Maries River drainages. The silvicultural prescriptions are shelterwood and overstory removal. Both tractor and cable yarding will be utilized. Developments include approximately 3.0 miles of new secondary road construction. Several Class II streams flow through the sale area.

3	<b>Pokey Ten</b>	Pts. Govt. Lots 1 & 2, Pts. SENE	1	44N/1W	492	7,720 MBF 80 MBF Cedar Products
		Pts. Govt. Lots 3 & 4, Pts. S2NW	1	44N/1W		
		Pts. NWSW, Pts. SESW	1	44N/1W		
		Pts. SE	1	44N/1W		
		Pts. Govt. Lot 3, Pts. SENE	2	44N/1W		
		Pts. NE, Pts. S2	10	44N/1W		
		Pts. NENW	12	44N/1W		
		Pts. Govt. Lots 2-6, Pts. SENW	6	44N/1E		
		Pts. SESW	31	45N/1E		
		Pts. SESE	36	45N/1W		

Estimated Auction: Summer 2016

This sale is located approximately 1 air mile north of Santa, Idaho in the Dago Creek drainage. The silvicultural prescription is a shelterwood. Tractor skidding and cable yarding will be utilized. Developments include approximately 7.0 miles of secondary road reconstruction, approximately 0.25 mile of secondary road abandonment, and brushing. Several Class I and Class II streams are located adjacent to the sale area.



## IDAHO DEPARTMENT OF LANDS FY17 TIMBER SALE PLAN

July 1, 2016 – June 30, 2017

St. Joe  
Supervisory Area

SALE NO.	SALE NAME	SUBDIVISION	SEC	T & R	APPROXIMATE		
					ACREAGE	VOLUME	
4	<b>No No Knob</b>	Pts. SENE	22	44N/1E	175	6,900 MBF	
		Pts.	23	44N/1E			55 MBF
		Pts. W2SW, Pts. SESW	24	44N/1E			Cedar
		Pts. NW, Pts. NWNWSW	25	44N/1E			Products
		Pts. E2NE	26	44N/1E			

Estimated Auction: Summer 2016

This sale is located approximately 5 air miles northeast of Fernwood, Idaho in the Olson and Crystal Creek drainages. The overall silvicultural prescription is a seed tree/shelterwood harvest, with a small unit of overstory removal. Both tractor and cable yarding will be utilized. Developments include approximately 1.37 miles of new secondary road construction, 2.2 miles of secondary road reconstruction and 0.5 mile of secondary road opening. A Class I tributary to Olson Creek lies adjacent to a portion of the sale and several Class II streams lie within the sale area.

5	<b>Whiskey Joe</b>	Pts. N2NE, Pts. E2SWNE	36	41N/4E	90	3,600 MBF	
		Pts. SENE, Pts. NESE	36	41N/4E			100 MBF
		Pts. E2NWSE, Pts. S2SE	36	41N/4E			Cedar
		Pts. S2SW, Pts. S2SE	22	41N/5E			Products
		Pts. NWNW	26	41N/5E			
		Pts. NE, Pts. N2NW, Pts. SWNW	27	41N/5E			
		Pts. SWNE, Pts. NENW	31	41N/5E			
		Pts. S2NW, Pts. SW	31	41N/5E			
		Pts. W2SE, Pts. N2SESE	31	41N/5E			

Estimated Auction: Spring 2017

This sale is approximately 20 air miles southeast of Clarkia, Idaho in the Little North Fork of the Clearwater River drainage. The silvicultural prescription is a clearcut and overstory removal. Both ground based and cable logging systems will be utilized. Developments include opening approximately 4.0 miles of secondary road and approximately 4.0 miles of secondary road construction. Several Class II streams are located within the sale area.

6	<b>Daylight Willow Ton</b>	Pts. S2SW	2	43N/3W	263	5,270 MBF	
		Pts. NWNE, Pts. NW, Pts. N2SW	10	43N/3W			(28,415 Tons)
		Pts. S2SE	11	43N/3W			15 MBF
		Pts. S2SW, Pts. W2SE	12	43N/3W			Cedar
		Pts. N2NW	13	43N/3W			Products
		Pts. N2NE	14	43N/3W			

Estimated Auction: Summer 2016

This sale is located approximately 5 air miles southwest of Emida, Idaho in the Willow Creek and South Fork Santa Creek drainages. Silvicultural prescriptions will include clearcut and overstory removal. Both ground based and cable yarding will be utilized. Developments include 2.4 miles of secondary road construction. A portion of the sale area is adjacent to Class I Willow Creek and several Class II streams are within the sale area.

# IDAHO DEPARTMENT OF LANDS FY17 TIMBER SALE PLAN

July 1, 2016 – June 30, 2017

St. Joe  
Supervisory Area

SALE NO.	SALE NAME	SUBDIVISION	SEC	T & R	ACREAGE	APPROXIMATE VOLUME
<b>7</b>	<b>Omega Eddy OSR Ton</b>	Pts. SW, Pts. SWSE	16	46N/1W	228	2,200 MBF
		Pts. Govt. Lot 14	16	46N/1W		(11,520 Tons)
		Pts. SWNE, Pts. W2, Pts. SWSE	36	46N/1E		20 MBF Cedar Products

Estimated Auction: Summer 2016

This sale is located approximately 5 air miles east of St. Maries, Idaho and approximately 5 air miles west of Calder, Idaho. Both units are south of the St. Joe River breaks. The silvicultural prescription is overstory removal. Both tractor skidding and cable yarding will be utilized. Developments will include approximately 5.44 miles of secondary road opening and a bridge installation on Jacot Creek. Several Class II streams are present within the sale area.

<b>8</b>	<b>West Long</b>	Pts. E2SE	32	41N/4E	141	4,730 MBF
		Pts. S2	33	41N/4E		135 MBF Cedar Products

Estimated Auction: Summer 2016

This sale is located approximately 11 air miles northeast of Elk River, Idaho in the Robinson Creek, Long Creek, and Little North Fork of the Clearwater River drainages. The silvicultural prescription consists of a shelterwood harvest. Both tractor and cable yarding will be utilized. Developments include approximately 0.55 mile of new secondary road reconstruction, 0.03 mile of new secondary construction, 0.27 mile of secondary road abandonment, and 4.1 miles of road opening. The North Fork of Robinson Creek and Long Creek, both Class I streams, are adjacent to the sale area; and several Class II and IIa streams flow from the sale area.

<b>9</b>	<b>Two Four OSR</b>	Pts. SW	4	41N/4E	230	5,200 MBF
		Pts. S2	5	41N/4E		50 MBF
		Pts. S2, Pts. NW	8	41N/4E		Cedar
		Pts.	16	41N/4E		Products
		Pts. N2, Pts. SE	17	41N/4E		
		Pts. NW	21	41N/4E		
		Pts. NE	22	42N/4E		
		Pts. SW	25	42N/4E		
		Pts. SE	26	42N/4E		
Pts. W2	35	42N/4E				

Estimated Auction: Fall 2016

This sale is located approximately 36 air miles southeast of Clarkia, Idaho in the Floodwood Creek and Stony Creek drainages. The silvicultural prescription will include overstory removal and a shelterwood. Both ground based and cable logging systems will be utilized. Developments include approximately 2.0 miles of secondary road reconstruction and the removal of one fish blocking culvert. Class I, Class II, and Class IIa streams are present within the sale area.



# IDAHO DEPARTMENT OF LANDS FY17 TIMBER SALE PLAN

July 1, 2016 – June 30, 2017

## Clearwater Supervisory Area

SALE NO.	SALE NAME	SUBDIVISION	SEC	T & R	APPROXIMATE ACREAGE	VOLUME
<b>1</b>	<b>Point Seed</b>	Pts. S2SW, Pts. SWSE	11	36N/4E	218	2,915 MBF
		Pts. W2NE, Pts. W2, Pts. NWSE	14	36N/4E		

Estimated Auction: Fall 2016

This sale is located 6 air miles southwest of Pierce, Idaho in the Winter Creek drainage. A seed tree harvest prescription will be conducted on the sale area. Tractor yarding will be required. Development work includes approximately 2.92 miles of spur road opening. Several Class II streams flow within and adjacent to the sale area and are tributary to Winter Creek, a Class I stream.

<b>2</b>	<b>Rainy Democrat</b>	Pts. S2NE, Pts. SE	10	37N/4E	346	4,850 MBF
		Pts. SWSW	11	37N/4E		
		Pts. NWNW	14	37N/4E		
		Pts. SW, Pts. W2SE	16	37N/4E		
		Pts. E2SE, SWSE	17	37N/4E		
		Pts. NE	20	37N/4E		
		Pts. NW	21	37N/4E		

Estimated Auction: Fall 2016

This sale is located 8.5 air miles southwest of Headquarters, Idaho in the Rainy, Cedar and Cow Creek drainages. Silvicultural prescriptions include seed tree and overstory removal treatments. Harvest methods required on this sale include tractor and cable yarding. Development work includes reconstruction of approximately 10.1 miles of existing spur road. Several Class II streams are present within the sale area.

<b>3</b>	<b>East Calhoun</b>	Pts. SWNE	27	38N/5E	200	3,400 MBF
		Pts. S2NW	27	38N/5E		
		Pts. SW	27	38N/5E		

Estimated Auction: Spring 2017

This sale is located 1.5 air miles southwest of Headquarters, Idaho in the Calhoun Creek drainage. Seed tree and clearcut prescriptions are proposed for the sale area. Tractor and cable yarding will be required on this sale. Development work includes approximately 0.79 mile of new spur road construction and 3.41 miles of existing spur road reconstruction. The sale boundary is adjacent to a Class I stream (Calhoun Creek) and several Class II streams are present within the sale area.

<b>4</b>	<b>Big Main OSR</b>	Pts. Govt. Lots 2 & 3, Pts. SWNE	3	38N/4E	77	1,500 MBF
		Pts. SENW, Pts. SW	3	38N/4E		

Estimated Auction: Summer 2016

This sale is located approximately 6 air miles northwest of Headquarters, Idaho in the North Fork and South Fork of Big Creek drainages. An overstory removal prescription will be conducted on the sale area. Tractor yarding will be required. Development work includes approximately 0.25 mile of new spur road construction and 1.50 miles of spur road opening. Several Class II streams flow within the sale area and are tributary to both the North and South Fork of Big Creek, a Class I stream.

**IDAHO DEPARTMENT OF LANDS FY17 TIMBER SALE PLAN**

July 1, 2016 – June 30, 2017

Clearwater  
Supervisory Area

SALE NO.	SALE NAME	SUBDIVISION	SEC	T & R	APPROXIMATE	
					ACREAGE	VOLUME
5	<b>East Rock</b>	Pts. SESW	6	38N/5E	196	6,115 MBF
		Pts. NE, Pts. E2NW	7	38N/5E		
		Pts. NESW, Pts. SE	7	38N/5E		

Estimated Auction: Spring 2017

This sale is located approximately 3 air miles northwest of Headquarters, Idaho in the Rock Creek and Alder Creek drainages. A seed tree prescription will be conducted over three units, with a clearcut comprising the fourth unit. A ground based yarding system will be required. Development work includes approximately 3.5 miles of new spur road construction and approximately 0.5 mile of existing spur road reconstruction. Several Class II streams flow within the sale area.

6	<b>Eureka Alder</b>	Pts. NESE, Pts. S2SE	7	38N/5E	304	6,100 MBF
		Pts. SW	8	38N/5E		
		Pts. N2NW, Pts. SWNW	17	38N/5E		
		Pts. N2NE	18	38N/5E		

Estimated Auction: Spring 2017

This sale is located approximately 2 air miles northwest of Headquarters, Idaho between the Alder Creek and Reeds Creek drainages. A combination of seed tree and clearcut prescriptions will be utilized on the sale. Cable and tractor yarding will be required. Development work includes approximately 2.25 miles of new spur road construction and 1.5 miles of spur road opening. Several Class II streams flow within the sale area and are tributary to Alder Creek, a Class I stream.

7	<b>McPhillip Pole</b>	Pts. S2SW	28	38N/3E	235	1,740 MBF 5,000 Poles
		Pts. SESW, Pts. SESE	29	38N/3E		
		Pts. SENESW, Pts. SESW	30	38N/3E		
		Pts. NW	33	38N/3E		

Estimated Auction: Spring 2017

This sale is located 15 air miles northeast of Orofino, Idaho in the McKinnon Creek drainage. Pole quality cedar will be harvested from a mixed species stand. Harvest method will include cable and tractor yarding systems. Development work includes approximately 10.0 miles of existing spur road opening. Several Class II streams are present within the sale area.

8	<b>Anchor Salvage</b>	Pts. SESE	20	40N/5E	400	1,685 MBF
		Pts. SWNW	27	40N/5E		
		Pts. NWNE, Pts. S2NE	28	40N/5E		
		Pts. NW	28	40N/5E		
		Pts. NENE	29	40N/5E		

Estimated Auction: Summer 2016

This sale is located 17 air miles northwest of Headquarters, Idaho on the ridge between Elkberry Creek and Benton Creek drainages. This sale will salvage beetle infested timber by using a seed tree and group selection prescriptions on 358 acres. Both cable and tractor yarding systems will be required. Development work includes approximately 1.25 miles of new spur road construction and 2.0 miles of existing spur road reconstruction. Several Class II streams are present within the sale area.

**IDAHO DEPARTMENT OF LANDS FY17 TIMBER SALE PLAN**

July 1, 2016 – June 30, 2017

Clearwater  
Supervisory Area

SALE NO.	SALE NAME	SUBDIVISION	SEC	T & R	ACREAGE	APPROXIMATE VOLUME
9	Lower Ladds	N2NE, SWNE, Pts. N2SENE	15	38N/3E	217	2,200 MBF
		Pts. SWSENE, Pts. S2NW	15	38N/3E		

Estimated Auction: Winter 2017

This sale is located 12 air miles northeast of Orofino, Idaho within the Ladds Creek drainage. The silvicultural prescription will be an overstory removal. Tractor and cable yarding systems will be required. Developments will include 4.91 miles of spur road opening. Several Class II streams are present within the sale area.

10	Trapper Siding	Pts. N2NE, Pts. NW	22	38N/6E	150	3,700 MBF
		Pts. NWSW	22	38N/6E		

Estimated Auction: Fall 2016

This sale is located 5.5 air miles east of Headquarters, Idaho in the Washington Creek drainage. The silvicultural prescription for the entire sale area is a seed tree harvest. Tractor and cable yarding will be required on this sale. Development work includes approximately 1.0 mile of new spur road construction and 0.8 mile of existing spur road reconstruction. Several perennial Class II streams are present within the sale area.

11	Snake Ridge OSR	Pts. S2NE, Pts. SENW	24	38N/4E	301	3,805 MBF
		E2SW, SE	24	38N/4E		
		Pts. Govt. Lots 3 & 4	19	38N/5E		

Estimated Auction: Summer 2016

This sale is located approximately 4 air miles west of Headquarters, Idaho in the Snake Creek drainage. An overstory removal prescription will be conducted on the sale area. Both tractor and cable yarding systems will be required. Development work includes approximately 9.5 miles of existing spur road opening. Several Class II streams flow within the sale area.

12	Flat Road	Pts. SESE	4	36N/5E	368	3,500 MBF
		Pts. E2SE	8	36N/5E		
		Pts. E2, W2NW, SWNW, SW	9	36N/5E		
		Pts. NENE	17	36N/5E		

Estimated Auction: Spring 2017

This sale is located 2 air miles southwest of Pierce, Idaho in the Flat Creek drainage. A seed tree harvest prescription will be conducted on the sale area. Tractor and cable yarding will be required. Development work includes, approximately 1.5 miles of main road construction and approximately 4.0 miles of spur road construction, Several Class II streams flow within and adjacent to the sale area and are tributary to Flat Creek (Class I).

**Additional small volume sales:** 200      490 MBF

**TOTALS:**    3,212      42,000 MBF  
5,000 Poles

## IDAHO DEPARTMENT OF LANDS FY17 TIMBER SALE PLAN

July 1, 2016 – June 30, 2017

### Ponderosa Supervisory Area

SALE NO.	SALE NAME	SUBDIVISION	SEC	T & R	APPROXIMATE	
					ACREAGE	VOLUME
1	<b>Isabella's B&amp;B</b>	Pts. W2NE, Pts. NW	36	40N/2E	273	8,300 MBF
		Pts. S2NW, Pts. N2SW	17	41N/4E		
		Pts. Govt. Lot 4, Pts. E2NE	18	41N/4E		
		Pts. SESW, Pts. NESE	18	41N/4E		
		Pts. NENW, Pts. Govt. Lot 1	19	41N/4E		
		Pts. Govt. Lot 2, Pts. SENW	19	41N/4E		

Estimated Auction: Summer 2016

This sale is located approximately 8 air miles northeast of Elk River, Idaho in the Isabella Creek drainage and 1 air mile southeast of Elk River, Idaho in the Elk Creek drainage. This sale will be harvested utilizing seed tree, clearcut, and overstory removal silvicultural prescriptions. Ground and cable yarding methods are required to harvest this sale. Approximately 0.6 mile of spur road will be constructed. The sale is adjacent to Class I streams and has several Class II streams within and adjacent to the sale area, all of which are tributaries to Dworshak reservoir.

2	<b>Cold Meadow Pole</b>	Pts. NE, Pts. S2NW, Pts. S2	23	39N/1E	490	1,490 MBF 5,500 Poles
		Pts. NWNE, Pts. NW, Pts. N2SW	26	39N/1E		
		Pts. E2NE, Pts. NESE	27	39N/1E		

Estimated Auction: Summer 2016

This sale is located approximately 10 air miles northeast of Southwick, Idaho, in the Long Meadow Creek drainage. Unit 1 of this sale will harvest pole quality cedar trees in a previously entered stand. Unit 2 will be the initial entry into this stand to harvest pole quality cedar trees. Unit 3 is a right-of-way unit associated with the construction of new spur roads. Tractor and cable yarding methods will be required to harvest this sale. Approximately 6.2 miles of spur road will be opened and approximately 1.2 miles of new spur road will be constructed. There is one Class I stream adjacent to the sale area. There are several perennial and intermittent Class II streams within and adjacent to the sale area.

3	<b>Park Place</b>	Pts. Govt. Lots 1-4	13	43N/5W	350	5,400 MBF
		Pts. W2NE, Pts. W2, Pts. W2SE	13	43N/5W		

Estimated Auction: Summer 2016

This sale is located approximately 10 air miles north of Potlatch, Idaho. The units are in the middle fork of the Deep Creek drainage. The silvicultural prescriptions for the sale include overstory removal, shelterwood, and clearcut harvests. Tractor and cable yarding will be used to harvest this sale. The sale will require approximately 8.0 miles of spur road reconstruction. Class I and Class II streams are within and adjacent to this sale.

## IDAHO DEPARTMENT OF LANDS FY17 TIMBER SALE PLAN

July 1, 2016 – June 30, 2017

### Ponderosa Supervisory Area

SALE NO.	SALE NAME	SUBDIVISION	SEC	T & R	APPROXIMATE	
					ACREAGE	VOLUME
4	<b>Colonel Jackson</b>	Pts. Govt. Lots 2, 3 & 4	3	40N/1E	350	6,000 MBF
		Pts. SWNE	3	40N/1E		
		Pts. NENE, Pts. S2NE	34	41N/1E		
		Pts. SENW, Pts. E2SW	34	41N/1E		
		Pts. SE	34	41N/1E		
		Pts. SENE, Pts. W2NW	35	41N/1E		
		Pts. NESE	35	41N/1E		
		Pts. N2NE, Pts. NENW	36	41N/1E		
		Pts. NWSW	36	41N/1E		

Estimated Auction: Summer 2016

This sale is located approximately 5 air miles east of Bovill, Idaho in the Jackson, Bloom, and Pivash Creek drainages. This sale will be harvested utilizing seed tree, clearcut, and overstory removal silvicultural prescriptions. Cable and tractor yarding methods are required to harvest this sale. Approximately 4.0 miles of spur road will be constructed, and 3.0 miles of spur road will be reconstructed. The sale is adjacent to Class I streams and has several Class II streams within and adjacent to the sale area, all of which are tributaries to the East Fork of the Potlatch River.

5	<b>Drifter Pale Pole</b>	Pts. SESW	27	38N/1E	360	650 MBF 4,800 Poles
		Pts. S2NE	32	38N/1E		
		Pts. E2SW	32	38N/1E		
		Pts. SE	32	38N/1E		
		Pts. SWNW	33	38N/1E		
		Pts. W2SW	33	38N/1E		
		Pts. E2NW	34	38N/1E		

Estimated Auction: Summer 2016

This sale is located approximately 6 air miles east of Southwick, Idaho, in the Drift Creek drainage. Unit 1 of this sale will be a first entry harvest of pole quality cedar trees. Unit 2 will harvest pole quality cedar trees in a previously entered stand of timber. Tractor and cable yarding methods will be required to harvest this sale. This sale will require approximately 0.23 mile of new spur road construction and 3.0 miles of road opening. There are several Class II intermittent and perennial streams located within and adjacent to the sale area.

6	<b>Out Standing Oviatt</b>	Pts. NENE	35	40N/1E	595	8,800 MBF
		Pts. NE, NW, SW	36	40N/1E		
		Pts. Govt. Lots 2, 3 & 4	30	40N/2E		
		Pts. E2SW	30	40N/2E		
		Pts. Govt. Lots 1 & 2	31	40N/2E		
		Pts. W2NE, Pts. NENW	31	40N/2E		
		Pts. E2SW, Pts. SE	31	40N/2E		

Estimated Auction: Summer 2016

This sale is located approximately 4 air miles west of Elk River, Idaho. The units are located in the Oviatt Creek and Cameron Creek drainages. The silvicultural prescriptions will include overstory removal and clearcut methods. Tractor and cable yarding methods will be utilized to harvest this sale. Developments will include 1.6 miles of spur road construction. The sale area is adjacent to Cameron Creek, a Class I stream. Oviatt Creek, a Class I stream, is within and adjacent to the sale area. There are several Class II streams within and adjacent to the sale area.



## IDAHO DEPARTMENT OF LANDS FY17 TIMBER SALE PLAN

July 1, 2016 – June 30, 2017

SALE NO.	SALE NAME	SUBDIVISION	Ponderosa Supervisory Area		APPROXIMATE	
			SEC	T & R	ACREAGE	VOLUME
<b>7</b>	<b>Cherry Butte</b>	Pts. Govt. Lot 4, Pts. SESW	7	40N/1W	450	6,000 MBF
		Pts. S2SE	7	40N/1W		
		Pts. NESW, Pts. S2SW	8	40N/1W		
		NWNW	17	40N/1W		
		Pts. Govt. Lots 1, 2 & 3	18	40N/1W		
		Pts. SESW, SWSE	2	41N/2W		
		Pts. N2N2, SWNW	11	40N/2W		
		Pts. NW, Pts. NESW, Pts. N2SE	12	40N/2W		
		Pts. NE, Pts. E2NW, Pts. NESW	13	40N/2W		
		Pts. N2SE	13	40N/2W		

Estimated Auction: Spring 2017

This sale is located approximately 2 air miles northeast of Deary, Idaho in the Brush Creek drainage. This sale will harvest mature timber through seed tree, shelterwood, and clearcut prescriptions. Tractor skidding and cable yarding methods are required to harvest this sale. Approximately 4.0 miles of new spur road construction will be required. There are Class II streams within each unit of the sale area.

<b>8</b>	<b>Mason Dicks Line</b>	Pts. SW	20	38N/1E	442	3,100 MBF
		Pts. NWNE	29	38N/1E		
		Pts. N2NW	29	38N/1E		
		Pts. S2SW	30	38N/1E		
		Pts. SE	30	38N/1E		
		Pts. NW	31	38N/1E		

Estimated Auction: Summer 2016

This sale is located approximately 5 air miles east of Southwick, Idaho, in the Dick's Creek drainage. This sale will be harvested utilizing seed tree, clearcut, and overstory removal silvicultural prescriptions. Tractor skidding methods are required to harvest this sale. Approximately 4.3 miles of spur road will be opened. There are several Class II intermittent and perennial streams located within and adjacent to the sale area, all of which are tributaries to Dworshak reservoir.

<b>Additional small volume sales:</b>	<u>100</u>	<u>200 MBF</u>
<b>TOTALS:</b>	3,410	39,940 MBF 10,300 Poles

## IDAHO DEPARTMENT OF LANDS FY17 TIMBER SALE PLAN

July 1, 2016 – June 30, 2017

Maggie Creek  
Supervisory Area

SALE NO.	SALE NAME	SUBDIVISION	SEC	T & R	APPROXIMATE	
					ACREAGE	VOLUME
1	<b>Pulp Fiction</b>	Pts. Govt. Lots 1 & 2, Pts. S2NE	1	35N/4E	385	6,700 MBF
		Pts. SWNW, Pts. E2SW, Pts. W2SE	1	35N/4E		3,770 Pulp
		Pts. Govt. Lot 2, Pts. SWNE	6	35N/5E		
		Pts. Govt. Lots 3, 4 & 5	6	35N/5E		
		Pts. SWNW	6	35N/5E		
		Pts. NESW, Pts. Govt. Lot 6	6	35N/5E		
		Pts. N2SE	6	35N/5E		
		Pts. SENE, Pts. E2SE	36	36N/4E		
		Pts. Govt. Lot 2, Pts. SENW	31	36N/5E		
		Pts. Govt. Lot 3, Pts. NESW	31	36N/5E		
		Pts. Govt. Lot 4, Pts. SE	31	36N/5E		
		Pts. W2SW	32	36N/5E		

Estimated Auction: Summer 2016

This sale is located approximately 3 air miles east of Weippe, Idaho in the Kamiah Gulch drainage. Five clearcut units are planned with this sale. All harvesting operations will be ground/tractor based. A total of 3.1 miles of new construction is proposed. Intermittent Class II streams are present in and/or adjacent to the sale area. This sale is part of the Maggie Creek Pulp Plan.

2	<b>Pasture I Pulp</b>	Pts. S2SE	7	33N/5E	338	5,500 MBF
		Pts. SWSW	8	33N/5E		2,050 Pulp
		Pts. W2W2	17	33N/5E		
		Pts. E2, SENW, E2SW	18	33N/5E		
		Pts. N2NE, SWNE, Pts. E2NW	19	33N/5E		
		Pts. Govt. Lot 1	19	33N/5E		

Estimated Auction: Spring 2017

This sale is located approximately 6 air miles northeast of Kooskia, Idaho, in the Cedar Creek and Tinney Creek drainages. This sale is comprised of eight units. Seven clearcuts will be utilized to meet silvicultural objectives. Harvesting will be accomplished by using ground based and skyline yarding methods. Approximate development work will be 1.71 miles of new spur road construction, 1.83 miles of spur road reconstruction, and 3.74 miles of spur road opening associated with this sale. Four Class II intermittent streams lay within the sale area. This sale is part of the Maggie Creek Pulp Plan.

3	<b>Endless Pulp</b>	Pts. E2E2	9	34N/5E	370	7,000 MBF
		Pts. W2	10	34N/5E		5,790 Pulp
		Pts. N2NE	15	34N/5E		
		Pts. NENE	16	34N/5E		
		Pts. SESW	10	35N/5E		
		Pts. E2NE, Pts. NW, Pts. NWSE	15	35N/5E		
		Pts. SWSW	29	35N/5E		
		Pts. NE	31	35N/5E		
		Pts. NW	32	35N/5E		

Estimated Auction: Winter 2017

This sale is located 5 air miles east of Weippe, Idaho. The sale consists of dispersed units located within the Mosquito Creek, Miles Creek, and Pete & Charlie Creek drainages. Four clearcuts will be utilized to meet silvicultural objectives. Yarding will be accomplished with ground based skidding methods. Developments will include approximately 1.75 miles of new spur road construction, 1.5 miles of spur road reconstruction, and 2.8 miles of spur road opening. One Class II perennial stream and several Class II intermittent streams are present within the sale area. This sale is part of the Maggie Creek Pulp Plan.

**IDAHO DEPARTMENT OF LANDS FY17 TIMBER SALE PLAN**

July 1, 2016 – June 30, 2017

Maggie Creek  
Supervisory Area

SALE NO.	SALE NAME	SUBDIVISION	SEC	T & R	APPROXIMATE	
					ACREAGE	VOLUME
4	<b>Captain Taylor</b>	Pts. SENE, Pts. SESW	16	32N/4W	405	1,800 MBF
		Pts. SE	16	32N/4W		
		Pts. SESW, Pts. S2SE	21	32N/4W		
		Pts. N2NW	27	32N/4W		
		Pts. N2NE	28	32N/4W		

Estimated Auction: Summer 2016

This sale is located approximately 10 air miles southwest of Winchester, Idaho in both the Eagle Creek and South Fork Captain John Creek drainages. This sale will utilize a combination of sanitation, shelterwood and uneven aged management prescriptions. Tractor and cable yarding will be required. Approximately 3.5 miles of spur road will be reconstructed and 1.0 mile of new spur road will be constructed. Intermittent Class II streams are present within the sale area.

**Additional small volume sales:** 0 0 MBF

**TOTALS:** 1,498      21,000 MBF  
11,610 Pulp

## IDAHO DEPARTMENT OF LANDS FY17 TIMBER SALE PLAN

July 1, 2016 – June 30, 2017

Payette Lakes  
Supervisory Area

SALE NO.	SALE NAME	SUBDIVISION	SEC	T & R	APPROXIMATE	
					ACREAGE	VOLUME
1	<b>Cruickshank Ton</b>	Pts.	17	18N/4E	465	28,866 Tons (5,100 MBF)
		Pts.	18	18N/4E		
		Pts.	19	18N/4E		
		Pts.	13	18N/3E		

Estimated Auction: Summer 2016

This sale is located approximately 3.5 air miles southeast of McCall, Idaho in the Boulder Creek drainage. A shelterwood prescription will be implemented. Approximately 40 acres of the sale area will be harvested utilizing skyline yarding equipment and the remainder of the sale area will utilize ground based equipment. Approximately 0.88 mile of secondary road will be reconstructed and 10.70 miles of spur road will be reconstructed. There is one Class II tributary to Boulder Creek (a Class I stream) within the sale area.

2	<b>Everlast Ton</b>	Pts.	23	19N/1W	312	18,169 Tons (3,210 MBF)
		Pts.	24	19N/1W		
		Pts.	25	19N/1W		

Estimated Auction: Fall 2016

This sale is located approximately 6 air miles west of New Meadows, Idaho in the Weiser River drainage. Seed tree and clearcut prescriptions will be implemented. All of the sale volume may be harvested with ground based equipment. Approximately 6.77 miles of spur road will be opened. One Class II perennial and several Class II intermittent tributaries to the Weiser River are present within the sale area.

3	<b>Elk Pass Ton</b>	Pts.	22	17N/3W	321	19,924 Tons (3,520 MBF)
		Pts.	23	17N/3W		
		Pts.	26	17N/3W		
		Pts.	27	17N/3W		

Estimated Auction: Summer 2016

This sale is located approximately 11 air miles northwest of Council, Idaho in the Olive Creek drainage. Seed tree and individual tree selection prescriptions will be implemented. All of the sale volume will be harvested with ground based equipment. Approximately 2.7 miles of spur road and 0.14 mile of secondary road will be reconstructed. Approximately 1.2 miles of secondary road will be opened. Approximately 0.81 mile of new secondary road will be constructed. One Class IIa perennial stream and one Class II intermittent stream are within the sale area.

4	<b>Tri 2 Ton</b>	Pts.	9	11N/3E	231	11,745 Tons (2,075 MBF)
		Pts.	16	11N/3E		

Estimated Auction: Spring 2017

This sale is located approximately 16 air miles southwest of Cascade, Idaho in the Tripod Creek drainage. The sale consists of seven clearcuts, ranging from 19 to 57 acres in size. All of the sale volume will be harvested with ground based equipment. Approximately 5.0 miles of spur road will be reconstructed. All streams within the units are Class II.

# IDAHO DEPARTMENT OF LANDS FY17 TIMBER SALE PLAN

July 1, 2016 – June 30, 2017

Payette Lakes  
Supervisory Area

SALE NO.	SALE NAME	SUBDIVISION	SEC	T & R	APPROXIMATE ACREAGE	APPROXIMATE VOLUME
<b>5</b>	<b>Gibson Ton</b>	Pts.	36	15N/2E	70	9,764 Tons (1,725 MBF)

Estimated Auction: Spring 2017

This sale is located approximately 8 air miles northwest of Cascade, Idaho in the Gibson Creek and North Fork Payette River (Lake Cascade) drainages. The sale consists of three clearcuts ranging in size from 12 acres to 34 acres in size. All of the sale volume will be harvested with ground based equipment. Approximately 3.0 miles of spur road will be reconstructed. All streams within the units are Class II.

<b>Additional small volume sales:</b>	50	2,092 Tons (370 MBF)
---------------------------------------	----	-------------------------

<b>TOTALS:</b>	1,449	90,560 Tons (16,000 MBF)
----------------	-------	-----------------------------

# IDAHO DEPARTMENT OF LANDS FY17 TIMBER SALE PLAN

July 1, 2016 – June 30, 2017

Southwest  
Supervisory Area

SALE NO.	SALE NAME	SUBDIVISION	SEC	T & R	APPROXIMATE ACREAGE	VOLUME
1	<b>Eastside Ton</b>	Pts. Govt. Lots 3 & 4	24	10N/3E	310	9,000 MBF
		Pts.	19	10N/4E		
		Pts. SW, Pts. W2W2SWSE	20	10N/4E		
		Pts.	30	10N/4E		

Estimated Auction: Summer 2016

This sale is located approximately 5 air miles northwest of Crouch, Idaho in the Easley Creek, Hidden Creek, and Left Fork of Scriver Creek drainages. All of these drainages are tributary to the Middlefork of the Payette River. This sale will utilize a clearcut prescription on four units. Tractor and off road jammer yarding systems are required. Approximately 2.3 miles of new spur road construction and 9.2 miles of spur road reconstruction are required. Class II streams are present within the sale area.

<b>Additional small volume sales:</b>	0	0 MBF
<b>TOTALS:</b>	310	9,000 MBF

# IDAHO DEPARTMENT OF LANDS FY17 TIMBER SALE PLAN

July 1, 2016 – June 30, 2017

## Eastern Supervisory Area

SALE NO.	SALE NAME	SUBDIVISION	SEC	T & R	APPROXIMATE ACREAGE	VOLUME
<b>1</b>	<b>Buck Springs Ton</b>	Pts. SESW, Pts. SWSE	12	4N/41E	300	3,000 MBF
		Pts. SE, Pts. NW, Pts. SW	13	4N/41E		
		Pts. NWSE	13	4N/41E		
		Pts. NENE	14	4N/41E		

Estimated Auction: Spring 2017

This sale is located 13 air miles southeast of Rexburg, Idaho, in the Moody Creek drainage. The silvicultural prescription will be a shelterwood and group selection with trees marked reserved. Tractor skidding will be utilized. Approximately 1.5 miles of spur road will be constructed and 1.0 mile of spur road will be reconstructed. There are no Class I or Class II streams within the sale boundary, but Class II streams are adjacent to some of the units.

<b>2</b>	<b>Hearn Creek Ton</b>	Pts. E2	8	1N/12E	500	2,000 MBF
		Pts. S2	9	1N/12E		
		Pts. W2	16	1N/12E		
		Pts. N2NE	17	1N/12E		

Estimated Auction: Spring 2017

This sale is located 13 air miles northwest of Fairfield, Idaho, in the south Fork of Lime Creek and the Chimney Creek drainages. The silvicultural prescription will be a shelterwood treatment. Tractor skidding will be utilized. Approximately 1.25 miles of spur road will be constructed and 1.0 mile of spur road will be reconstructed. There are no Class I or Class II streams within the sale boundary. Hearn's Creek, a Class II stream, is adjacent to the sale area.

**Additional small volume sales:** 0 0 MBF

**TOTALS:**    800                    5,000 MBF