

LEASE FACT SHEET: LEASE OPPORTUNITY

Lease Number:	G500160	Report Date:	2/14/2020
Applications Accepted:	Until 03/31/2020, Close of Business	Public Auction Date:	TBD
Supervisory Area:	Payette Lakes Supervisory Office	Office Contact:	Diane Green
Asset Classification:	Timberland	Office Number:	(208) 634-7125
County:	Valley and Adams		

EXPIRING LEASE : N/A

PROPOSED LEASE

Lease Start Date:	TBD	Proposed Primary Activity:	Grazing
Lease End Date:	TBD	Commodity Type:	Cattle
Proposed Term Length:	10 Years	Total Proposed Acres:	640
Access:	Contact Area Office	Animal Unit Months (AUM):	105
First Year Rent:	\$779.10 (estimated)	Water Rights:	N/A
Annual Increase:	N/A	Secondary Current Use:	N/A
Royalty:	N/A	Proposed Higher or Better Use:	N/A
Proposed Special Terms & Conditions:	See Lease Draft	Related Instruments:	N/A

DISCLAIMER: The Idaho Department of Lands (IDL) provides this product for informational purposes only. Consumers of this information should review or consult the primary data and information sources to ascertain the viability of the information for their purposes. IDL provides these data in good faith and in no event shall be liable for any incorrect information, result or analysis, any lost profits and special, indirect or consequential damages to any party, arising out of or in connection with the use or the inability to use the data or the product provided. IDL makes this data and product available as a convenience to the public, and for no other purpose. IDL reserves the right to change or revise published data and/or the product at any time.

Exhibit A: LEGAL DESCRIPTION

TWN	RNG	SEC	Legal Description	County	Endow	Acres	Grazing Acres	Dry Acres	Irrigated Acres	CRP Acres	Waste Acres	PHMA Acres	IHMA Acres	AUMs
16N	02E	36	E2, Pts. E2W2 (East of County Line)	Valley	PS	454.27	454.27	0	0	0	0	0	0	75
16N	02E	36	Pts. E2W2, W2W2 (West of County Line)	Adams	PS	185.73	185.73	0	0	0	0	0	0	30

DISCLAIMER: The Idaho Department of Lands (IDL) provides this product for informational purposes only. Consumers of this information should review or consult the primary data and information sources to ascertain the viability of the information for their purposes. IDL provides these data in good faith and in no event shall be liable for any incorrect information, result or analysis, any lost profits and special, indirect or consequential damages to any party, arising out of or in connection with the use or the inability to use the data or the product provided. IDL makes this data and product available as a convenience to the public, and for no other purpose. IDL reserves the right to change or revise published data and/or the product at any time.

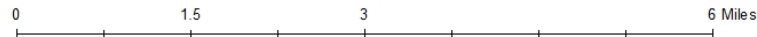
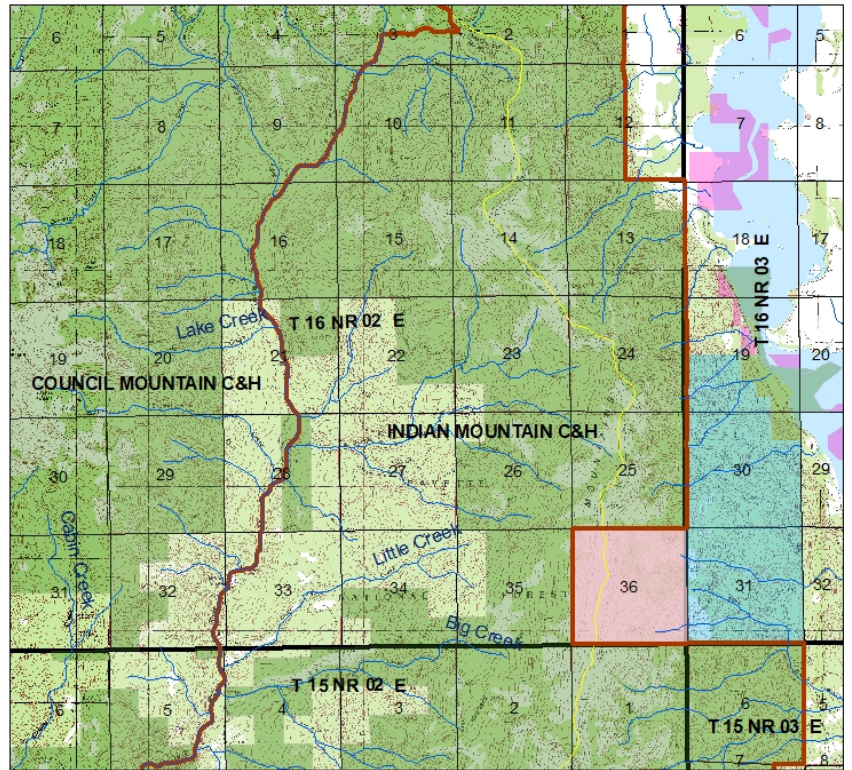
Exhibit B: EXISTING IMPROVEMENTS

IMPROVEMENT	OWNERSHIP	ADDITIONAL BILLED USE
NONE		

DISCLAIMER: The Idaho Department of Lands (IDL) provides this product for informational purposes only. Consumers of this information should review or consult the primary data and information sources to ascertain the viability of the information for their purposes. IDL provides these data in good faith and in no event shall be liable for any incorrect information, result or analysis, any lost profits and special, indirect or consequential damages to any party, arising out of or in connection with the use or the inability to use the data or the product provided. IDL makes this data and product available as a convenience to the public, and for no other purpose. IDL reserves the right to change or revise published data and/or the product at any time.

Exhibit C: LEASE MAP

G500160
T16N R2E, Section 36: E2, Pts. E2W2 (East of County Line) Valley, 454.27 Acres, 75 AUM
Pts. E2W2, W2W2, (West of County Line) Adams, 185.73 Acres, 30 AUM
PS Endowment



Legend

Streams	USFS	Section
FS Allotment Bdys	Bureau of Land Management	Township
Adams-Valley County Bdy	Bureau of Reclamation	
G50XXXX Lease Bdy	Private	
Management Agency	State	



DISCLAIMER: The Idaho Department of Lands (IDL) provides this product for informational purposes only. Consumers of this information should review or consult the primary data and information sources to ascertain the viability of the information for their purposes. IDL provides these data in good faith and in no event shall be liable for any incorrect information, result or analysis, any lost profits and special, indirect or consequential damages to any party, arising out of or in connection with the use or the inability to use the data or the product provided. IDL makes this data and product available as a convenience to the public, and for no other purpose. IDL reserves the right to change or revise published data and/or the product at any time.