

LEASE FACT SHEET: LEASE OPPORTUNITY

Lease Number: G800481
Applications Accepted: Until 03/31/2020, close of business
Supervisory Area: Eastern
Asset Classification: Rangeland
County: Bannock

Report Date: 2/14/2020
Public Auction Date: TBD
Office Contact: Heath Hancock
Office Number: 208-5254-7167

EXPIRING LEASE: N/A**PROPOSED LEASE**

Lease Start Date: TBD
Lease End Date: TBD
Proposed Term Length: 20 Years
Access: No Legal Access
First Year Rent: \$593.60 (estimated)

Annual Increase: No
Royalty: N/A

Proposed Special Terms & Conditions: See Lease Draft

Proposed Primary Activity: Grazing
Commodity Type: Sheep
Total Proposed Acres: 640
Animal Unit Months (AUM): 80
Water Rights: N/A
Secondary Current Use: N/A
Proposed Higher or Better Use: Alternative uses may be proposed to IDL
Related Instruments: N/A

Exhibit A: LEGAL DESCRIPTION

TWN	RNG	SEC	Legal Description	County	Endow	Acres	Grazing Acres	Dry Acres	Irrigated Acres	CRP Acres	Waste Acres	PHMA Acres	IHMA Acres	AUMs
06N	35E	36	ALL	Bannock	PS	640	640	0	0	0	0	0	0	80

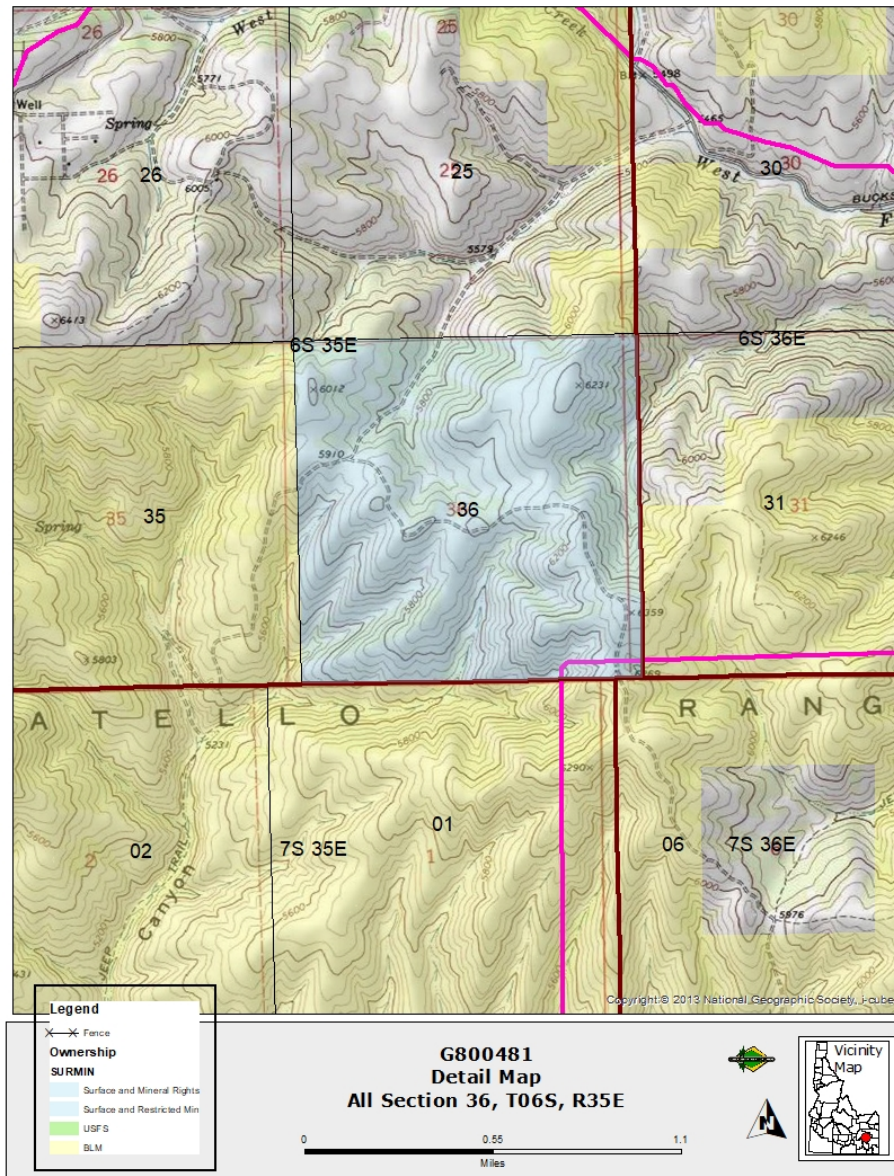
Exhibit B: EXISTING IMPROVEMENTS

IMPROVEMENT	OWNERSHIP	ADDITIONAL BILLED USE
NO IMPROVEMENTS		

DISCLAIMER: The Idaho Department of Lands (IDL) provides this product for informational purposes only. Consumers of this information should review or consult the primary data and information sources to ascertain the viability of the information for their purposes. IDL provides these data in good faith and in no event shall be liable for any incorrect information, result or analysis, any lost profits and special, indirect or consequential damages to any party, arising out of or in connection with the use or the inability to use the data or the product provided. IDL makes this data and product available as a convenience to the public, and for no other purpose. IDL reserves the right to change or revise published data and/or the product at any time.

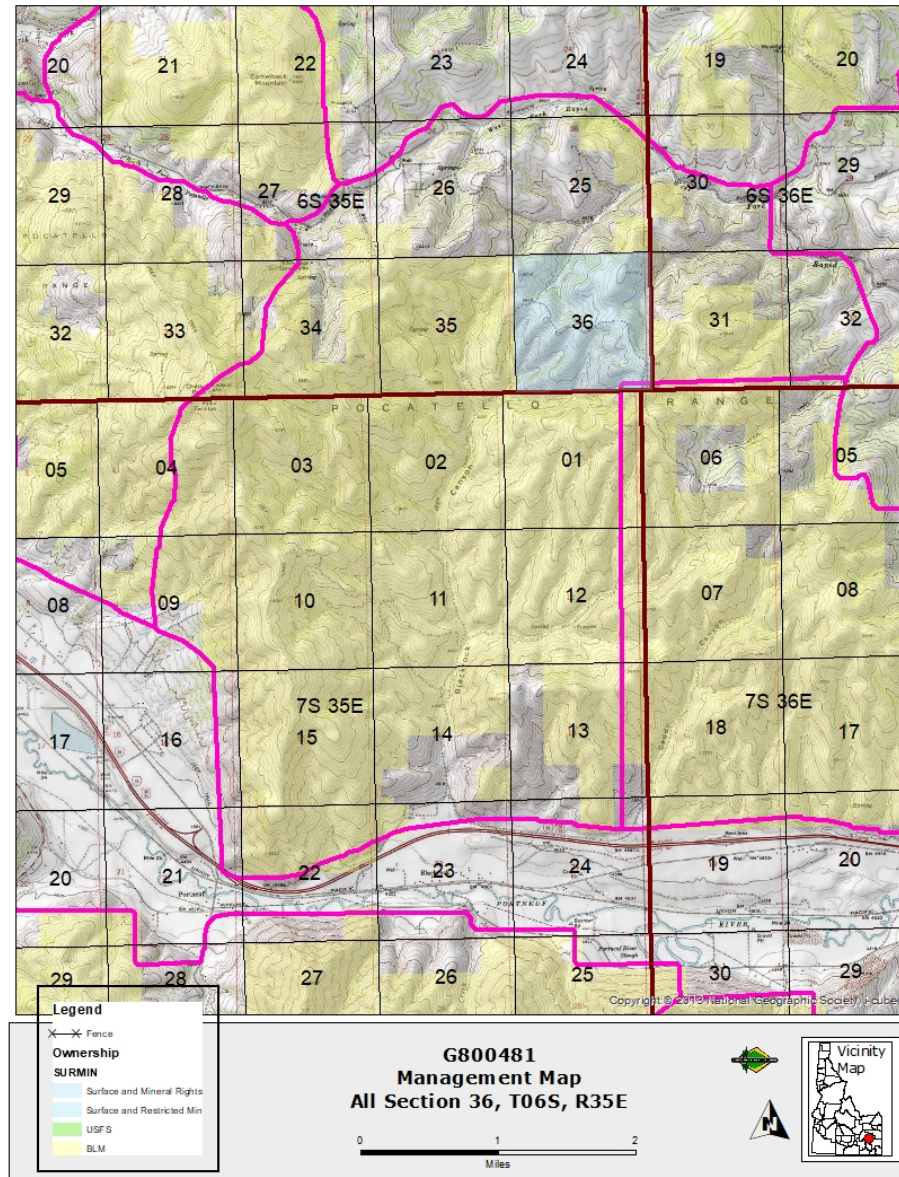
DISCLAIMER: The Idaho Department of Lands (IDL) provides this product for informational purposes only. Consumers of this information should review or consult the primary data and information sources to ascertain the viability of the information for their purposes. IDL provides these data in good faith and in no event shall be liable for any incorrect information, result or analysis, any lost profits and special, indirect or consequential damages to any party, arising out of or in connection with the use or the inability to use the data or the product provided. IDL makes this data and product available as a convenience to the public, and for no other purpose. IDL reserves the right to change or revise published data and/or the product at any time.

Exhibit C: DETAIL MAP



DISCLAIMER: The Idaho Department of Lands (IDL) provides this product for informational purposes only. Consumers of this information should review or consult the primary data and information sources to ascertain the viability of the information for their purposes. IDL provides these data in good faith and in no event shall be liable for any incorrect information, result or analysis, any lost profits and special, indirect or consequential damages to any party, arising out of or in connection with the use or the inability to use the data or the product provided. IDL makes this data and product available as a convenience to the public, and for no other purpose. IDL reserves the right to change or revise published data and/or the product at any time.

Exhibit D: LEASE MAP



DISCLAIMER: The Idaho Department of Lands (IDL) provides this product for informational purposes only. Consumers of this information should review or consult the primary data and information sources to ascertain the viability of the information for their purposes. IDL provides these data in good faith and in no event shall be liable for any incorrect information, result or analysis, any lost profits and special, indirect or consequential damages to any party, arising out of or in connection with the use or the inability to use the data or the product provided. IDL makes this data and product available as a convenience to the public, and for no other purpose. IDL reserves the right to change or revise published data and/or the product at any time.