



## LEASE FACT SHEET: LEASE OPPORTUNITY

Lease Number: G700165

Applications Accepted: 1/1/2021 - 4/30/2021

Supervisory Area: Eastern Jerome

Asset Classification: Rangeland

County: Blaine

Report Date: 12/31/2019

Public Auction Date: TBD

Office Contact: Chelsey Sanders

Office Number: 208-324-2561

---

## EXPIRING LEASE

Lease Start Date: 1/1/2014

Lease End Date: 12/31/2021

Primary Current Use: Grazing

## PROPOSED LEASE

Lease Start Date: 1/1/2022

Lease End Date: 12/31/41

Proposed Term Length: 20 Yrs

Access: Contact Area Office

First Year Rent: TBD

Annual Increase: No

Royalty: N/A

Proposed Primary Activity: Grazing

Commodity Type: Cattle

Total Proposed Acres: 55

Animal Unit Months (AUM): 29

Water Rights: N/A

Secondary Current Use: N/A

Proposed Higher or Better Use: Alternative uses may be proposed to IDL

Proposed Special Terms & Conditions:

See Lease Draft

Related Instruments: N/A

DISCLAIMER: The Idaho Department of Lands (IDL) provides this product for informational purposes only. Consumers of this information should review or consult the primary data and information sources to ascertain the viability of the information for their purposes. IDL provides these data in good faith and in no event, shall be liable for any incorrect information, result or analysis, any lost profits and special, indirect or consequential damages to any party, arising out of or in connection with the use or the inability to use the data or the product provided. IDL makes this data and product available as a convenience to the public, and for no other purpose. IDL reserves the right to change or revise published data and/or the product at any time.



### Exhibit A: LEGAL DESCRIPTION

TWN	RNG	SEC	Legal Description	County	Endow	Total Acres	Grazing Acres	Dryland Acres	Irrigated Acres	CRP Acres	Waste Acres	PHMA Acres	IHMA Acres	AUMS
07N	14E	16	Parts E2E2 (all East of Hwy 75)	Blaine	PS	55.00	55.00	0.00	0.00	0.00	0.00	0.00	0.00	29.00

DISCLAIMER: The Idaho Department of Lands (IDL) provides this product for informational purposes only. Consumers of this information should review or consult the primary data and information sources to ascertain the viability of the information for their purposes. IDL provides these data in good faith and in no event, shall be liable for any incorrect information, result or analysis, any lost profits and special, indirect or consequential damages to any party, arising out of or in connection with the use or the inability to use the data or the product provided. IDL makes this data and product available as a convenience to the public, and for no other purpose. IDL reserves the right to change or revise published data and/or the product at any time.



**Exhibit B: EXISTING IMPROVEMENTS**

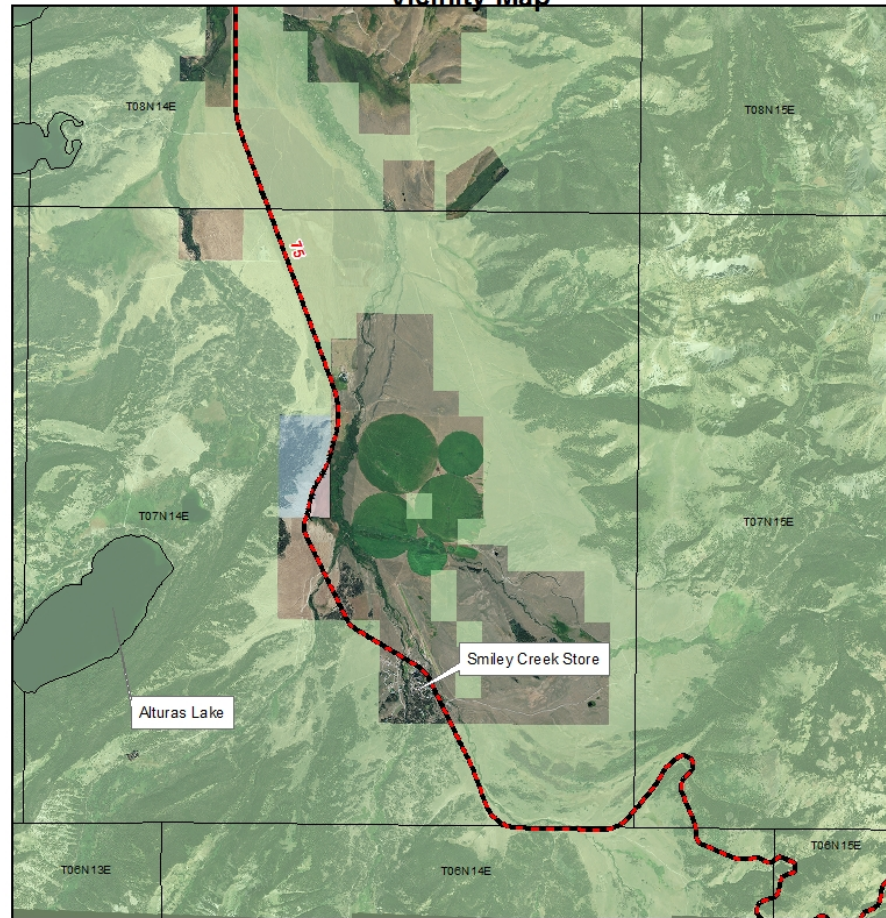
IMPROVEMENT	OWNERSHIP	ADDITIONAL BILLED USE

DISCLAIMER: The Idaho Department of Lands (IDL) provides this product for informational purposes only. Consumers of this information should review or consult the primary data and information sources to ascertain the viability of the information for their purposes. IDL provides these data in good faith and in no event, shall be liable for any incorrect information, result or analysis, any lost profits and special, indirect or consequential damages to any party, arising out of or in connection with the use or the inability to use the data or the product provided. IDL makes this data and product available as a convenience to the public, and for no other purpose. IDL reserves the right to change or revise published data and/or the product at any time.



Exhibit C: VICINITY MAP

Grazing Lease G700165  
Vicinity Map



**Legend**

0 2 4 Miles

Highways	Other State Land
G700165	BLM
	USFS

Part Sec. 16, T07N, R14E, B.M.

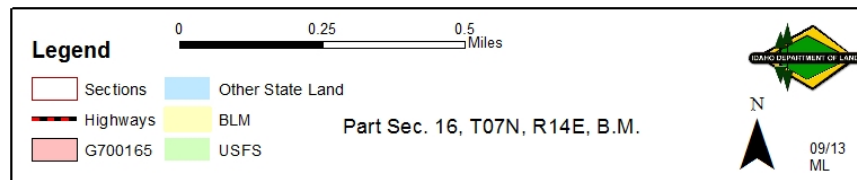
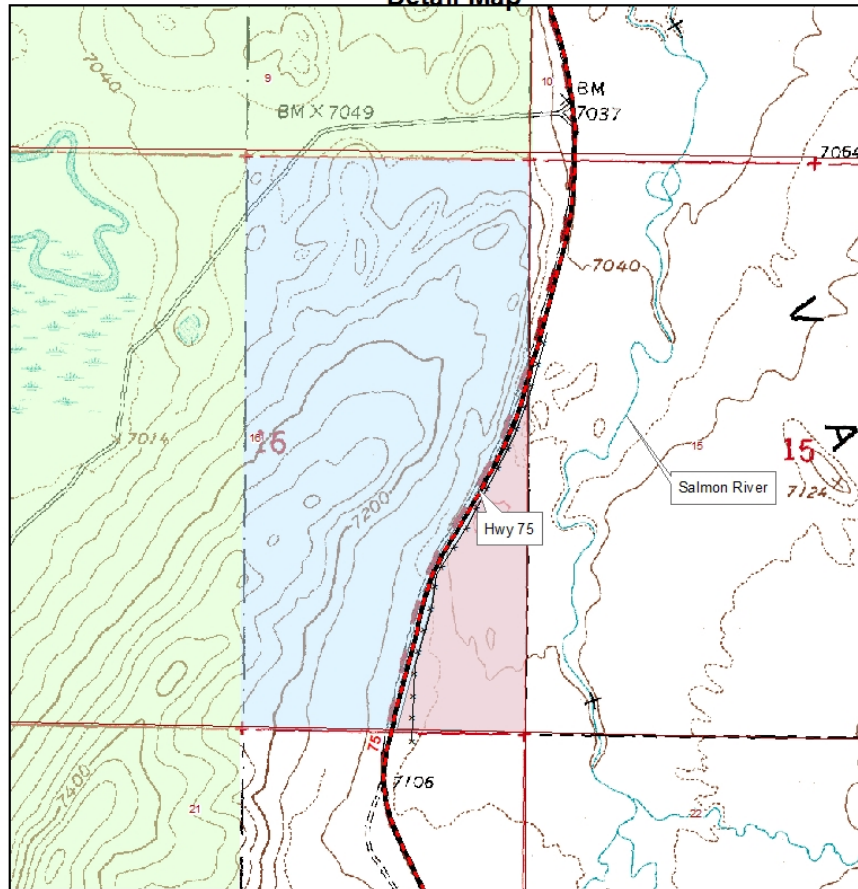
N  
09/13  
ML

DISCLAIMER: The Idaho Department of Lands (IDL) provides this product for informational purposes only. Consumers of this information should review or consult the primary data and information sources to ascertain the viability of the information for their purposes. IDL provides these data in good faith and in no event, shall be liable for any incorrect information, result or analysis, any lost profits and special, indirect or consequential damages to any party, arising out of or in connection with the use or the inability to use the data or the product provided. IDL makes this data and product available as a convenience to the public, and for no other purpose. IDL reserves the right to change or revise published data and/or the product at any time.



Exhibit D: LEASE MAP

Grazing Lease G700165  
Detail Map



DISCLAIMER: The Idaho Department of Lands (IDL) provides this product for informational purposes only. Consumers of this information should review or consult the primary data and information sources to ascertain the viability of the information for their purposes. IDL provides these data in good faith and in no event, shall be liable for any incorrect information, result or analysis, any lost profits and special, indirect or consequential damages to any party, arising out of or in connection with the use or the inability to use the data or the product provided. IDL makes this data and product available as a convenience to the public, and for no other purpose. IDL reserves the right to change or revise published data and/or the product at any time.