



LEASE FACT SHEET: LEASE OPPORTUNITY

Lease Number: G700137

Applications Accepted: 1/1/2022 - 4/30/2022

Supervisory Area: Eastern Jerome

Asset Classification: Rangeland

County: Blaine

Report Date: 12/31/2019

Public Auction Date: TBD

Office Contact: Chelsey Sanders

Office Number: 208-324-2561

EXPIRING LEASE

Lease Start Date: 1/1/2013

Lease End Date: 12/31/2022

Primary Current Use: Grazing

PROPOSED LEASE

Lease Start Date: 1/1/2023

Lease End Date: 12/31/2042

Proposed Term Length: 20 Yrs

Access: Contact Area Office

First Year Rent: TBD

Annual Increase: No

Royalty: N/A

Proposed Primary Activity: Grazing

Commodity Type: Cattle

Total Proposed Acres: 640

Animal Unit Months (AUM): 71

Water Rights: N/A

Secondary Current Use: N/A

Proposed Higher or Better Use: Alternative uses may be proposed to IDL

Proposed Special Terms & Conditions:

See Lease Draft

Related Instruments: N/A

DISCLAIMER: The Idaho Department of Lands (IDL) provides this product for informational purposes only. Consumers of this information should review or consult the primary data and information sources to ascertain the viability of the information for their purposes. IDL provides these data in good faith and in no event, shall be liable for any incorrect information, result or analysis, any lost profits and special, indirect or consequential damages to any party, arising out of or in connection with the use or the inability to use the data or the product provided. IDL makes this data and product available as a convenience to the public, and for no other purpose. IDL reserves the right to change or revise published data and/or the product at any time.



Exhibit A: LEGAL DESCRIPTION

TWN	RNG	SEC	Legal Description	County	Endow	Total Acres	Grazing Acres	Dryland Acres	Irrigated Acres	CRP Acres	Waste Acres	PHMA Acres	IHMA Acres	AUMS
02S	18E	36	ALL	Blaine	PS	640.00	640.00	0.00	0.00	0.00	0.00	0.00	0.00	71.00

DISCLAIMER: The Idaho Department of Lands (IDL) provides this product for informational purposes only. Consumers of this information should review or consult the primary data and information sources to ascertain the viability of the information for their purposes. IDL provides these data in good faith and in no event, shall be liable for any incorrect information, result or analysis, any lost profits and special, indirect or consequential damages to any party, arising out of or in connection with the use or the inability to use the data or the product provided. IDL makes this data and product available as a convenience to the public, and for no other purpose. IDL reserves the right to change or revise published data and/or the product at any time.



Exhibit B: EXISTING IMPROVEMENTS

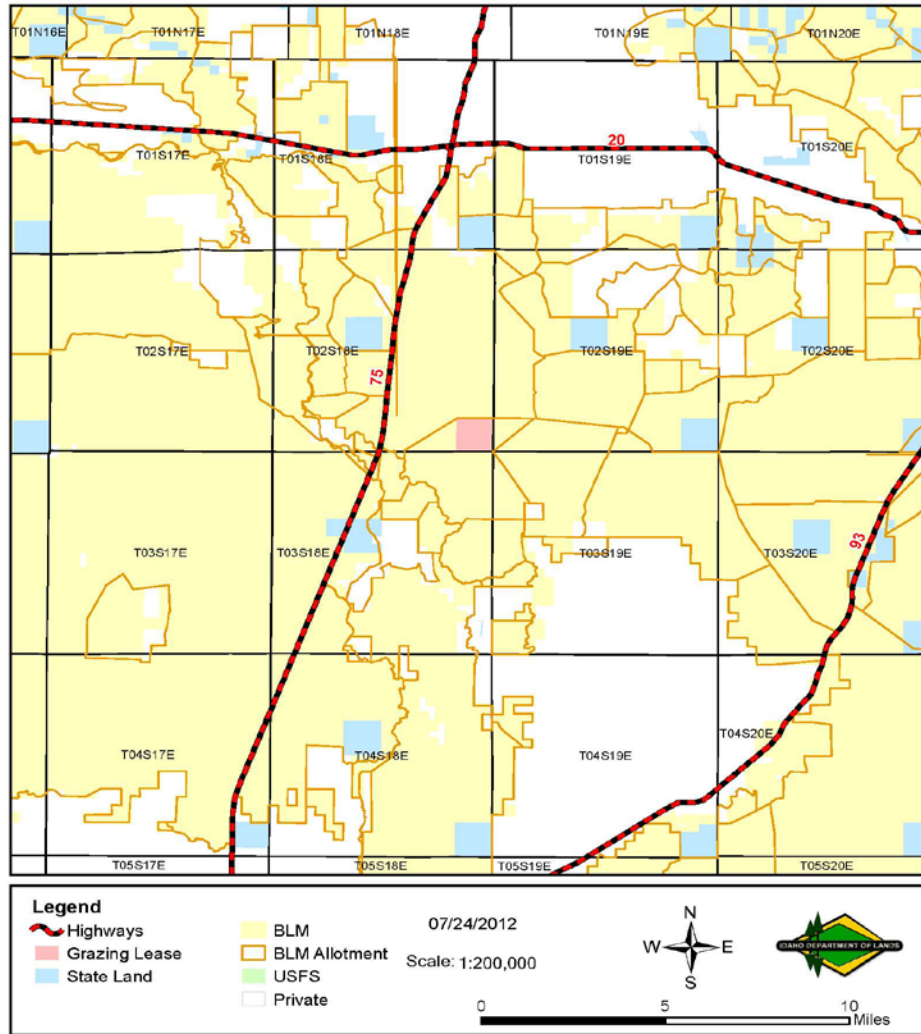
IMPROVEMENT	OWNERSHIP	ADDITIONAL BILLED USE

DISCLAIMER: The Idaho Department of Lands (IDL) provides this product for informational purposes only. Consumers of this information should review or consult the primary data and information sources to ascertain the viability of the information for their purposes. IDL provides these data in good faith and in no event, shall be liable for any incorrect information, result or analysis, any lost profits and special, indirect or consequential damages to any party, arising out of or in connection with the use or the inability to use the data or the product provided. IDL makes this data and product available as a convenience to the public, and for no other purpose. IDL reserves the right to change or revise published data and/or the product at any time.



Exhibit C: VICINITY MAP

Grazing Lease G700137 Vicinity Map

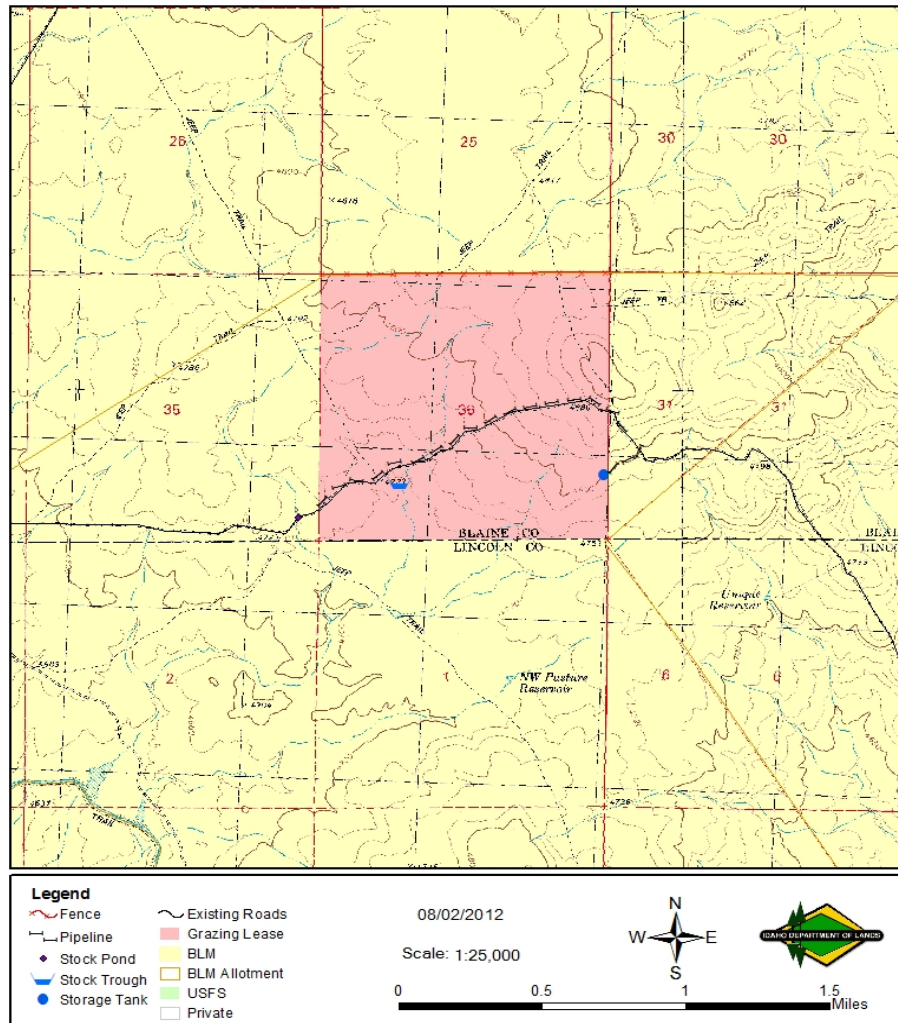


DISCLAIMER: The Idaho Department of Lands (IDL) provides this product for informational purposes only. Consumers of this information should review or consult the primary data and information sources to ascertain the viability of the information for their purposes. IDL provides these data in good faith and in no event, shall be liable for any incorrect information, result or analysis, any lost profits and special, indirect or consequential damages to any party, arising out of or in connection with the use or the inability to use the data or the product provided. IDL makes this data and product available as a convenience to the public, and for no other purpose. IDL reserves the right to change or revise published data and/or the product at any time.



Exhibit D: LEASE MAP

Grazing Lease G700137
T02S R18E SEC36



DISCLAIMER: The Idaho Department of Lands (IDL) provides this product for informational purposes only. Consumers of this information should review or consult the primary data and information sources to ascertain the viability of the information for their purposes. IDL provides these data in good faith and in no event, shall be liable for any incorrect information, result or analysis, any lost profits and special, indirect or consequential damages to any party, arising out of or in connection with the use or the inability to use the data or the product provided. IDL makes this data and product available as a convenience to the public, and for no other purpose. IDL reserves the right to change or revise published data and/or the product at any time.