

FISCAL YEAR 2020 TIMBER SALES PLAN



IDAHO DEPARTMENT OF LANDS FY20 TIMBER SALE PLAN

July 1, 2019 – June 30, 2020

Table of Contents

Types of Sales	3
Supervisory Area Offices	4
Administrative Rules and Purchaser Sale Requirements	6
Priest Lake	7
Pend Oreille Lake	10
Mica	13
St. Joe	16
Clearwater	21
Ponderosa	24
Maggie Creek	27
Payette Lakes	29
Southwest	31
Eastern	32

IDAHO DEPARTMENT OF LANDS FY20 TIMBER SALE PLAN

July 1, 2019 – June 30, 2020

Types of Sales

Timber Sales

Timber sales contain an estimated volume of at least 1,000 MBF and exceed the net appraised stumpage value for salvage sales established by the state board of land commissioners. Timber sales are designed to produce maximum stumpage returns to the endowment funds consistent with prudent long-term management practices.

Timber sales are advertised for four weeks in a newspaper in the county where the sale is located, and are sold at public auction.

Direct Sales

Direct Sale net appraised stumpage value does not exceed the maximum value established by the State Board of Land Commissioners. This type of sale is to be used to harvest isolated or by-passed parcels of timber of insufficient value and volume to justify a salvage sale. The direct sale is not used where two or more potential purchasers may be interested in bidding on the forest products offered for sale.

The direct sale of forest product stumpage is made without advertisement as authorized by the Director.

IDAHO DEPARTMENT OF LANDS FY20 TIMBER SALE PLAN

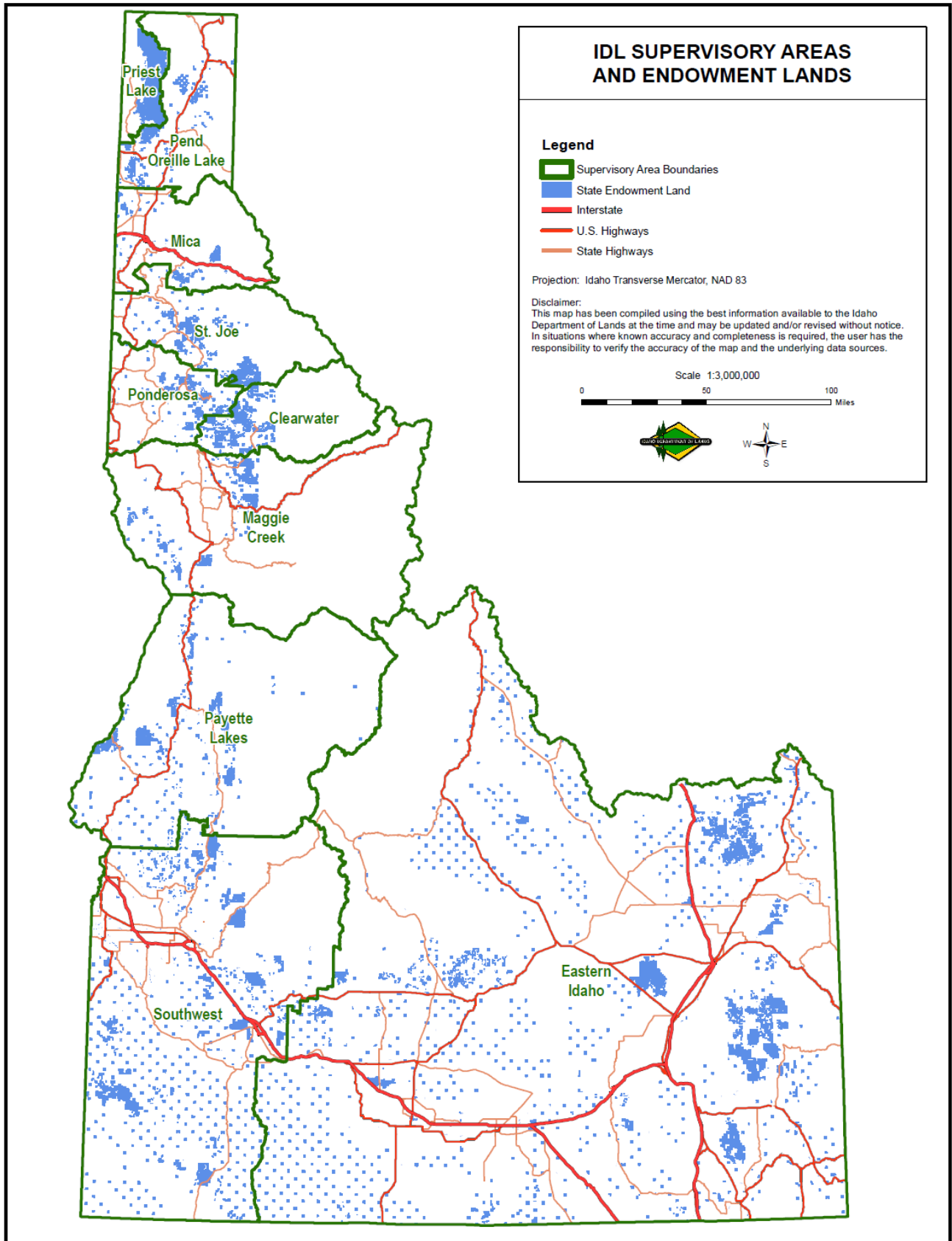
July 1, 2019 – June 30, 2020

Supervisory Area Offices

SUPERVISORY AREA	AREA SUPERVISOR	PHONE
Priest Lake 4053 Cavanaugh Bay Road Coolin, ID 83821	Eric Besaw Ron Durham	(208) 443-2516
Pend Oreille Lake 2550 Highway 2 West Sandpoint, ID 83864	Tom Fleer	(208) 263-5104
Mica 3706 Industrial Avenue S Coeur d'Alene, ID 83815	Frank Waterman	(208) 769-1577
St. Joe 1806 Main Avenue St. Maries, ID 83861	Rick Arcano	(208) 245-4551
Ponderosa 3130 Highway 3 Deary, ID 83823	Eric Besaw Alisa Schotzko	(208) 877-1121
Clearwater 10230 Highway 12 Orofino, ID 83544	Jay Sila	(208) 476-4587
Maggie Creek 913 Third Street Kamiah ID 83536	Patrick Hagen	(208) 935-2141
Payette Lakes 555 Deinhard Lane McCall, ID 83638	Scott Corkill	(208) 634-7125
Southwest/South Central 8355 W. State Street Boise, ID 83703	Bob Pietras	(208) 334-3488
Eastern Idaho 3563 Ririe Highway Idaho Falls, ID 83401	Pat Brown	(208) 525-7167

IDAHO DEPARTMENT OF LANDS FY20 TIMBER SALE PLAN

July 1, 2019 – June 30, 2020



IDAHO DEPARTMENT OF LANDS FY20 TIMBER SALE PLAN

July 1, 2019 – June 30, 2020

Administrative Rules and Purchaser Sale Requirements

Links to detailed information on the internet are provided below.

Administrative Rules of the Department of Lands

[20.02.14 – Selling Forest Products on State-Owned Endowment Lands](#)

For information regarding timber sale procedures, bidding procedures, bonding requirements and insurance requirements, click on the link below.

[Purchaser Sale Requirements](#)

IDAHO DEPARTMENT OF LANDS FY20 TIMBER SALE PLAN

July 1, 2019 – June 30, 2020

Priest Lake Supervisory Area

SALE NO.	SALE NAME	SUBDIVISION	SEC	T & R	APPROXIMATE	
					ACREAGE	VOLUME
1	Lion Edge	Pts. Govt. Lot 1, Pts. S2NE	5	62N/3W	179	2,800 MBF
		Pts. SENW, Pts. N2SW	5	62N/3W		
		Pts. Govt. Lot 7, Pts. E2SE	6	62N/3W		
		Pts. Govt. Lot 1	7	62N/3W		
		Pts. S2SW, Pts. SWSE	3	62N/4W		
		Pts. NE, Pts. N2NW, Pts. SENW	11	62N/4W		
		Pts. N2N2, Pts. SWNW	12	62N/4W		

Estimated Auction: Summer 2019

This sale is located within the Lion Creek drainage approximately 20.0 air miles north of Coolin, Idaho in Bonner and Boundary Counties. Harvest prescription will be a combination of clearcut, shelterwood, overstory removal and small group selection methods. Both ground based and cable harvesting methods will be required for this sale. Developments will include 5.0 miles of secondary road reconstruction and 0.5 mile of spur road reconstruction. Lion Creek is a Class I stream and is not within 75 feet of the sale area. There is another perennial Class I un-named stream adjacent to but not within the sale area. There are four intermittent Class II streams within the sale area.

2	Hunts Over	Pts. Govt. Lots 2, 3 & 4, Pts. SWNE	2	60N/4W	997	4,000 MBF
		Pts. S2NW, Pts. SW, Pts. W2SE	2	60N/4W		
		Pts. Govt. Lots 1, 5 & 8, Pts. SENE	3	60N/4W		
		Pts. Govt. Lots 1 & 2	10	60N/4W		
		Pts. NWNE, Pts. N2NW, Pts. SWNW	11	60N/4W		
		Pts. N2SE, Pts. SWSE	11	60N/4W		
		Pts. Govt. Lot 3	15	61N/4W		
		Pts. Govt. Lot 8	16	61N/4W		
		Pts. Govt. Lots 1, 3 & 4	21	61N/4W		
		Pts. E2NE, Pts. NESE, S2SE	21	61N/4W		
		Pts. SWNE, Pts. W2NW, Pts. SENW	22	61N/4W		
		Pts. SW, Pts. W2SE	22	61N/4W		
		Pts. S2SW	26	61N/4W		
		Pts. Govt. Lots 2, 3 & 4	34	61N/4W		
		Pts. SWNE, Pts. W2, Pts. W2SE	35	61N/4W		

Estimated Auction: Spring 2019

This sale is located within the Bear Creek, Horton Creek, Hunt Creek and South Fork Hunt Creek drainages approximately 8.0 air miles northeast of Coolin, Idaho in Bonner and Boundary Counties. The harvest prescription for this sale will be an overstory removal harvest. Ground based and cable yarding methods will be required on this sale. Developments will include 4.0 miles of spur road improvement and 13.0 miles of secondary road improvement. Bear Creek, Horton Creek, Hunt Creek and South Fork Hunt Creek are all Class I streams and are adjacent but not within 75 feet of the sale area.

IDAHO DEPARTMENT OF LANDS FY20 TIMBER SALE PLAN

July 1, 2019 – June 30, 2020

Priest Lake Supervisory Area

SALE NO.	SALE NAME	SUBDIVISION	SEC	T & R	APPROXIMATE	
					ACREAGE	VOLUME
3	Mountain Lion	Pts. Govt. Lot 4, Pts. S2NE	19	60N/3W	421	5,300 MBF
		Pts. SENW, Pts. E2SW, Pts. SE	19	60N/3W		
		Pts. Govt. Lots 1 & 2, Pts. N2NE	30	60N/3W		
		Pts. E2NW	30	60N/3W		
		Pts. SESE	24	60N/4W		
		Pts. E2NE, Pts. SWNE, Pts. SENW	25	60N/4W		
		Pts. E2SW, Pts. SE	25	60N/4W		
		Pts. NWNE, Pts. S2NE, Pts. E2NW	36	60N/4W		

Estimated Auction: Spring 2019

This sale is located within the Soldier Creek and Cougar Creek drainages approximately 5.0 air miles northeast of Coolin, Idaho in Bonner and Boundary Counties. The harvest prescription will be a combination of shelterwood and seedtree. Ground based and cable yarding with multi-span capabilities will be required on this sale. Developments will include 0.2 mile of new spur road construction, 1.5 miles of spur road reconstruction, 3.0 miles of spur road improvement and 1.0 mile of secondary road improvement. Soldier Creek is a Class I stream and is adjacent to but not within 75 feet of the sale area. Cougar Creek is a Class II stream and is adjacent to the sale area but not within 30 feet of the sale.

4	Dickensheet South	Pts. NESE	20	59N/4W	250	2,900 MBF
		Pts. SENE, Pts. NW, Pts. S2	21	59N/4W		
		Pts. SWNW, Pts. SW, Pts. W2SE	22	59N/4W		

Estimated Auction: Spring 2019

This sale is located within the Priest River and Priest Lake drainage approximately 2.0 air miles south of Coolin, Idaho in Bonner County. A combination of seedtree, shelterwood and clearcut harvest prescriptions will be involved on this sale. Ground based yarding methods will be required. Developments will include 0.5 mile of spur road reconstruction and 0.5 mile of spur road improvement. There are no streams within or adjacent to the sale area.

5	Cedar Canyon (Single Entry)	Pts. SWSW	5	58N/3W	160	2,500 MBF 2,800 Poles
		Pts. S2NE, Pts. E2SW, Pts. SE	7	58N/3W		
		Pts. W2NW	8	58N/3W		
		Pts. SWSE	11	58N/3W		
		Pts. N2NE	14	58N/3W		
		Pts. W2NE, Pts. NENW	18	58N/3W		

Estimated Auction: Summer 2019

This sale is located within the North Fork East River drainage approximately 4.0 air miles southeast of Coolin, Idaho in Bonner County. A combination of seedtree and clearcut harvest prescriptions will be involved on this sale. Ground based and cable yarding methods will be required. Developments will include 2.0 miles of spur road reconstruction. The North Fork East River is a Class I stream and is adjacent but not within 75 feet of the sale area. There are a few Class II perennial streams adjacent but not within the sale area.

IDAHO DEPARTMENT OF LANDS FY20 TIMBER SALE PLAN

July 1, 2019 – June 30, 2020

Priest Lake
Supervisory Area

SALE NO.	SALE NAME	SUBDIVISION	SEC	T & R	APPROXIMATE	
					ACREAGE	VOLUME
6	Devils Fork	Pts. SESE	10	58N/3W	130	3,000 MBF
		Pts. SWSW	11	58N/3W		
		Pts. NW, Pts. SW, Pts. SWSE	13	58N/3W		
		Pts. NWNW, Pts. NESE, Pts. SESE	14	58N/3W		
		Pts. NENE	15	58N/3W		
		Pts. NWNE, Pts. N2NW	24	58N/3W		

Estimated Auction: Summer 2019

This sale is located within the Middle Fork of the East River drainage approximately 10.0 air miles southeast of Coolin, Idaho in Bonner County. The silvicultural harvest prescription will include seedtree and clearcut methods. Ground based and cable yarding with multi-span capabilities will be required. Developments will include 0.7 mile of spur road construction, 1.7 miles of spur road reconstruction and 2.5 miles of secondary road improvement. The Middle Fork of the East River and Devil's Creek are Class I streams and are adjacent to but not within 75 feet of the sale area.

Additional small volume sales:	<u>67</u>	<u>500 MBF</u>
	TOTALS:	2,204 21,000 MBF 2,800 Poles

IDAHO DEPARTMENT OF LANDS FY20 TIMBER SALE PLAN

July 1, 2019 – June 30, 2020

Pend Oreille Lake
Supervisory Area

SALE NO.	SALE NAME	SUBDIVISION	SEC	T & R	APPROXIMATE	
					ACREAGE	VOLUME
1	Steep Shady Cedar (Single Entry)	Pts. SWNW, Pts. SW, Pts. W2SE	1	57N/4W	100	2,000 MBF 4,000 Poles
		Pts. N2	12	57N/4W		

Estimated Auction: Summer 2019

This sale is located within the Big Creek drainage approximately 11.0 miles west of Sandpoint, Idaho in Bonner County. The harvest prescription for the sale area will be a combination of seedtree and clearcut. Ground based and cable yarding methods will be required. Developments will include 4.2 miles of secondary road opening and 2.0 miles of spur road opening. Class I and II streams are present.

2	Chasing Fox	Pts. Govt. Lots 3 & 4	1	57N/4W	300	4,500 MBF
		Pts. Govt. Lots 1-4, 7 & 8	2	57N/4W		
		Pts. Govt. Lots 3 & 4, Pts. SESW	31	58N/3W		
		Pts. S2SW, Pts. SE	36	58N/4W		

Estimated Auction: Spring 2020

This sale is located within the Fox Creek drainage approximately 12.0 miles west of Sandpoint, Idaho in Bonner County. The harvest prescription for the sale area will be a combination of seedtree and clearcut. Ground based and cable yarding methods will be required. Developments will include 5.3 miles of secondary road opening and 2.0 miles of spur road opening. Class I and II streams are present.

3	Carey West	Pts. NWNE, Pts. NWSE, Pts. W2	16	55N/4W	320	3,800 MBF
---	-------------------	-------------------------------	----	--------	-----	-----------

Estimated Auction: Fall 2019

This sale is located within the Hoodoo Creek drainage approximately 5.0 miles southeast of Priest River, Idaho in Bonner County. The harvest prescription for the sale area will be a combination of seedtree and clearcut. Ground based and cable yarding methods will be required. Developments will include 1.3 miles of secondary road opening and 2.2 miles of spur road opening. Class II streams are present.

4	Twelve Mile	Pts. S2SE	10	55N/5W	175	4,000 MBF
		Pts. W2	14	55N/5W		
		Pts. E2SE	15	55N/5W		
		Pts. NWSW, Pts. NW	23	55N/5W		

Estimated Auction: Winter 2020

This sale is located within the North Fork of the Curtis Creek drainage and an unnamed intermittent stream that dissipates at the valley floor 2.0 miles south of the Pend Oreille River approximately 5.0 miles south of Priest River, Idaho in Bonner County. The harvest prescription for the sale area will be a combination of seedtree, overstory removal, and clearcut. Ground based harvesting will be required. Developments will include 4.0 miles of spur road opening and 0.5 mile of new spur road construction. Class II streams are present.

IDAHO DEPARTMENT OF LANDS FY20 TIMBER SALE PLAN

July 1, 2019 – June 30, 2020

Pend Oreille Lake
Supervisory Area

SALE NO.	SALE NAME	SUBDIVISION	SEC	T & R	APPROXIMATE ACREAGE	VOLUME
5	Freebob	Pts. SWNW, Pts. NWSW	5	56N/5W	190	1,400 MBF
		Pts. Govt. Lot 7, Pts. E2SW	6	56N/5W		
		Pts. SE	6	56N/5W		

Estimated Auction: Fall 2019

This sale is located within the Freeman Creek drainage approximately 6.0 miles northwest of Priest River, Idaho in Bonner County. The harvest prescription for the sale area will be a combination of seedtree and overstory removal. Ground based and cable yarding methods will be required. Developments will include 9.1 miles of spur and 3.8 miles of secondary road opening. Approximately 1.5 miles of new spur road will be constructed. Class II streams are present.

6	Riley Pine Over	Pts. SWSW	28	57N/4W	360	2,100 MBF
		Pts. E2SE	32	57N/4W		
		Pts. W2, Pts. W2SE	33	57N/4W		
		Pts. N2, Pts. NESW, Pts. SE	36	57N/4W		

Estimated Auction: Summer 2019

This sale is located within the Little Pine Creek and Riley Creek drainages. The sale area is approximately 8.0 miles north of Laclede, Idaho in Bonner County. The harvest prescription for the sale area will be a combination of overstory removal and clearcut. Ground based and cable yarding methods will be required. Developments will include 4.0 miles of spur road opening, 0.5 mile of spur road reconstruction, and 1.0 mile of secondary road reconstruction. Class I and II streams are present.

7	Turner Knob	Pts. NW, SWSE	16	63N/1E	130	700 MBF
----------	--------------------	---------------	----	--------	-----	---------

Estimated Auction: Summer 2019

Portions of this sale are located within the Little Joe Creek drainage. The sale area is approximately 8.0 miles north of Bonners Ferry, Idaho in Boundary County. The harvest prescription for the sale area will be a combination of seedtree, overstory removal, and clearcut. Ground based harvesting will be required. Developments will include 0.2 mile of spur road opening and 0.2 mile of spur road reconstruction. Class II streams are present.

8	Dune Again OSR	Pts. E2E2, Pts. NWNE	11	60N/1W	240	1,150 MBF
		Pts. E2W2SE	11	60N/1W		

Estimated Auction: Fall 2019

This sale is located within the Fall Creek and Deep Creek drainages. The sale area is approximately 3.0 miles west of Naples, Idaho in Boundary County. The harvest prescription for the sale area will be overstory removal. The entire sale area is suitable for ground based harvesting. Developments will include 1.0 mile of spur road opening. There are no Class I or II streams within the sale area.

IDAHO DEPARTMENT OF LANDS FY20 TIMBER SALE PLAN

July 1, 2019 – June 30, 2020

Pend Oreille Lake
Supervisory Area

SALE NO.	SALE NAME	SUBDIVISION	SEC	T & R	APPROXIMATE	
					ACREAGE	VOLUME
9	High School OSR	Pts. Govt. Lots 2-4, Pts. SWNE	4	60N/1W	350	2,275 MBF
		Pts. S2NW, Pts. SW, Pts. W2SE	4	60N/1W		

Estimated Auction: Summer 2019

This sale is located within the Fall Creek drainage. The sale area is approximately 1.0 mile west of Naples, Idaho in Boundary County. The harvest prescription for the sale area will be overstory removal. Ground based harvesting will be required. Developments will include opening 1.6 miles of spur road and 3.5 miles of secondary road. Class II streams are present.

10	Shiloh View	Pts. Govt. Lots 1-3, Pts. E2NW	19	60N/1E	980	4,075 MBF
		Pts. NESW, Pts. S2SE	19	60N/1E		
		Pts. SWNE, Pts. SW, Pts. SE	28	60N/1E		
		Pts. SWNE, Pts. NWNW	29	60N/1E		
		Pts. S2NW, Pts. NESW, Pts. SE	29	60N/1E		
		Pts. E2NE, Pts. SESW	30	60N/1E		
		Pts. SE	30	60N/1E		
		Pts. Govt. Lots 1-3, Pts. N2NE	31	60N/1E		
		Pts. SWNE, Pts. E2NW	31	60N/1E		
		Pts. SESE	25	60N/1W		
Pts. E2NE, Pts. NESE	36	60N/1W				

Estimated Auction: Winter 2020

This sale is located within the Trail Creek, Sand Creek, and Deep Creek drainages. The sale area is approximately 4.0 miles south of Naples, Idaho in Boundary County. The harvest prescriptions for the sale area will be seedtree and overstory removal. Ground based and cable yarding methods will be required. Developments will include opening 6.0 miles of spur road and 3.0 miles of secondary road. Approximately 1.5 miles of spur road will be reconstructed and 0.25 mile of spur road will be constructed. Class I and II streams are present.

Additional small volume sales:	0	0 MBF
TOTALS:	3,145	26,000 MBF 4,000 Poles

IDAHO DEPARTMENT OF LANDS FY20 TIMBER SALE PLAN

July 1, 2019 – June 30, 2020

Mica
Supervisory Area

SALE NO.	SALE NAME	SUBDIVISION	SEC	T & R	APPROXIMATE	
					ACREAGE	VOLUME
1	Capitol OSR	Pts. Govt. Lots 1, 2 & 3	2	49N/2E	451	3,400 MBF
		Pts. S2NE	2	49N/2E		
		Pts. SENW, Pts. SWSW	2	49N/2E		
		Pts. Govt. Lots 1, 2, 3 & 7	3	49N/2E		
		Pts. NESW, Pts. S2NE	3	49N/2E		
		Pts. W2SE	3	49N/2E		
		Pts. SESE	3	49N/2E		
		Pts. N2NE	10	49N/2E		
		Pts. NW/NW	11	49N/2E		
		Pts. Govt. Lot 9, Pts. SWSE	34	50N/2E		
		Pts. S2	35	50N/2E		

Estimated Auction: Summer 2019

This sale is located approximately 5.0 air miles northeast of Pinehurst, Idaho in the Thomas Creek, Falls Creek, and Smith Creek drainages. The harvest prescription is overstory removal. Both ground and cable based yarding will be utilized. Developments include opening approximately 20.0 miles of secondary road. Several Class II streams are present.

2	Hunt Ridge OSR	Pts. SENE, Pts. NESE	10	48N/1E	1,073	4,000 MBF
		Pts. S2SE	10	48N/1E		
		Pts.	14	48N/1E		
		Pts. N2NE, Pts. SENE, Pts. NW	16	48N/1E		
		Pts. W2SW, Pts. NESE	16	48N/1E		
		Pts. E2SE	17	48N/1E		
		Pts. S2	20	48N/1E		

Estimated Auction: Spring 2020

This sale is located approximately 4.0 air miles southwest of Kingston, Idaho in the Cataldo Gulch, Hunt Gulch, Skeel Gulch, and Little Baldy Creek drainages. The harvest prescriptions consist of overstory removal and clearcut harvests. Both ground and cable based yarding will be utilized. Developments include opening approximately 14.0 miles of mainhaul and approximately 15.0 miles of spur roads. There are several Class I and II streams within or adjacent to the sale area.

3	Wolf Lodge 2	W2NW	16	50N/2W	358	3,000 MBF
		W2SW	16	50N/2W		
		Pts. SE	16	50N/2W		
		Pts. NW/NE	16	50N/2W		
		Pts. SENE	16	50N/2W		

Estimated Auction: Winter 2020

This sale is located approximately 7.0 air miles east of Coeur d'Alene, Idaho in the Wolf Lodge Creek drainage. The harvest prescriptions consist of overstory removal and clearcut harvests. Both ground and cable based yarding will be utilized. Developments include approximately 0.62 mile of new spur road construction and approximately 5.0 miles of spur road opening. There is a Class I stream adjacent to the sale area and several Class II streams within the sale area.

IDAHO DEPARTMENT OF LANDS FY20 TIMBER SALE PLAN

July 1, 2019 – June 30, 2020

Mica
Supervisory Area

SALE NO.	SALE NAME	SUBDIVISION	SEC	T & R	APPROXIMATE ACREAGE	VOLUME
4	Cougar Saw Log	Pts. S2NW	16	50N/5W	237	2,000 MBF
		Pts. SW	16	50N/5W		
		Pts. NWSE	16	50N/5W		
		Pts. SWNE	16	50N/5W		

Estimated Auction: Winter 2020

This sale is located approximately 5.0 air miles south of Post Falls, Idaho in the Cougar Creek drainage. The harvest prescriptions consist of overstory removal, clearcut and seedtree harvests. Both ground and cable based yarding will be utilized. Developments include 1.5 miles of spur road opening, 0.4 mile of spur road reconstruction and 0.8 mile of new spur road construction. There is a Class I stream adjacent to the sale area and several Class II streams within the sale area.

5	Brickel Sawlog	Pts. SW	17	53N/5W	636	5,600 MBF
		Pts. Govt. Lot 7, Pts. SESE	18	53N/5W		
		Pts. Govt. Lots 1 & 2, Pts. NENE	19	53N/5W		
		Pts. SENW	19	53N/5W		
		Pts. N2NW	20	53N/5W		
		Pts. Govt. Lots 2, 3 & 4	13	53N/6W		
		Pts. SWNE, SENW, E2SW, SE	13	53N/6W		
		Pts. Govt. Lot 1	24	53N/6W		
		Pts. N2NE, Pts. NENW	24	53N/6W		

Estimated Auction: Summer 2019

This sale is located approximately 7.0 air miles west of Athol, Idaho in the Brickel Creek drainage. The harvest prescription consist of seedtree and clearcut harvest. Both ground and cable based yarding will be utilized. Developments include approximately 1.62 miles of new spur road, 0.74 mile of reconstructed spur road and approximately 31.86 miles of road opening. Several Class II streams are within the sale boundary.

Additional small volume sales: 0 0 MBF

TOTALS: 2,755 18,000 MBF

IDAHO DEPARTMENT OF LANDS FY20 TIMBER SALE PLAN

July 1, 2019 – June 30, 2020

Mica
Supervisory Area

Idaho Department of Fish and Game

SALE NO.	SALE NAME	SUBDIVISION	SEC	T & R	APPROXIMATE	
					ACREAGE	VOLUME
	McArthur Lake	Pts. SESE	27	60N/1W	48	795 MBF
		Pts. N2SE	34	60N/1W		
		Pts. SWNE	34	60N/1W		
		Pts. NENE	34	60N/1W		

Estimated Auction: Spring 2020

This sale is located approximately 13.0 air miles south of Bonners Ferry, Idaho in the Deep Creek drainage on Idaho Department of Fish and Game Ownership within the McArthur Lake Wildlife Management Area. The harvest prescriptions consist of group selection, single tree selection and shelterwood harvests. Ground based yarding will be utilized. Developments include approximately 0.1 mile of temporary road construction. Deep Creek, a Class I stream, is located adjacent to the sale area but not within the 75 foot stream protection zone.

IDAHO DEPARTMENT OF LANDS FY20 TIMBER SALE PLAN

July 1, 2019 – June 30, 2020

St. Joe
Supervisory Area

SALE NO.	SALE NAME	SUBDIVISION	SEC	T & R	APPROXIMATE	
					ACREAGE	VOLUME
1	South Boehls	Pts. SW	36	41N/3E	513	6,325 MBF 0 MBF Cedar Products
		Pts. NENW, Pts. S2S2	13	41N/4E		
		Pts. SENE	14	41N/4E		
		Pts. N2SENE	23	41N/4E		
		Pts. N2N2	24	41N/4E		
		Pts. N2SWNE	24	41N/4E		
		Pts. N2SENE	24	41N/4E		
		Pts. N2SWNW	24	41N/4E		
		Pts. N2SENE	24	41N/4E		
		Pts. Govt. Lots 1 & 2	19	41N/5E		
		Pts. NWNWNE	19	41N/5E		
		Pts. NENW	19	41N/5E		

Estimated Auction: Fall 2019

This sale is located approximately 14.0 miles northeast of Elk River, Idaho, in the Little North Fork Clearwater River and Breakfast Creek drainage. Overstory removal harvest prescriptions are planned. Ground based skidding and cable yarding will be required. Developments include approximately 0.01 mile of spur road construction, approximately 6.0 miles of spur road reconstruction, and 1.5 miles of existing road opening. Class II streams are present within the sale area.

2	Kugel Cherries OSR	Pts. Govt. Lots 1 & 2	6	44N/1W	607	5,565 MBF 70 MBF Cedar Products
		Pts. S2NE	6	44N/1W		
		Pts. SENW	6	44N/1W		
		Pts. NWSE	6	44N/1W		
		Pts. W2NE	16	45N/2W		
		Pts. E2NW	16	45N/2W		
		Pts. N2SW	16	45N/2W		
		Pts. N2SE, Pts. SESE	16	45N/2W		
		Pts. All	36	46N/3W		

Estimated Auction: Summer 2019

Units 1 and 2 are located approximately 4.5 miles southwest of St. Maries, Idaho, unit 3 is located approximately 5.0 miles southwest of St. Maries, Idaho, and units 4 and 5 are located 9.0 miles south of St. Maries, Idaho. The sale is in the Cherry Creek and Lower St. Maries River drainages. Clearcut and overstory removal harvest prescriptions are planned. Both ground based skidding and cable yarding will be required. Development include approximately 0.2 mile of secondary road construction, approximately 0.45 mile of secondary road reconstruction, and 29.2 miles of existing road opening. Class II streams are present within the sale area.

IDAHO DEPARTMENT OF LANDS FY20 TIMBER SALE PLAN

July 1, 2019 – June 30, 2020

St. Joe
Supervisory Area

SALE NO.	SALE NAME	SUBDIVISION	SEC	T & R	APPROXIMATE	
					ACREAGE	VOLUME
3	Hither to Yonder	Pts.	1	43N/1W	292	7,500 MBF 100 MBF Cedar Products
		Pts.	2	43N/1W		
		Pts.	4	43N/1W		
		Pts.	5	43N/1W		
		Pts.	8	43N/1W		
		Pts.	9	43N/1W		
		Pts.	10	43N/1W		
		Pts.	11	43N/1W		
		Pts.	14	43N/1W		
		Pts.	15	43N/1W		
		Pts.	16	43N/1W		
		Pts.	17	43N/1W		
		Pts.	21	43N/1W		
		Pts.	22	43N/1W		
		Pts.	24	43N/1W		
		Pts.	25	43N/1W		
		Pts.	26	43N/1W		
		Pts.	27	43N/1W		
		Pts.	28	43N/1W		
		Pts.	36	43N/1W		
		Pts.	16	44N/1W		
		Pts.	20	44N/1W		
		Pts.	21	44N/1W		
Pts.	26	44N/1W				
Pts.	35	44N/1W				
Pts.	36	44N/1W				

Estimated Auction: Spring 2020

This sale is located approximately 2.0 miles southwest of Fernwood, Idaho in the Tyson Creek drainage. Shelterwood and clearcut harvest prescriptions are planned. Ground based skidding and cable yarding will be required. Development include approximately 2.0 miles of secondary road construction, approximately 1.0 mile of secondary road reconstruction, and 3.0 miles of existing road opening. Class II streams are present within the sale area.

4	Cluggs Cedar (Single Entry)	Pts. E2	11	41N/5E	146	8,320 MBF 90 MBF Cedar Products 3,500 Poles
		Pts. S2NE, Pts. S2NW	12	41N/5E		
		Pts. S2	12	41N/5E		
		Pts. N2	13	41N/5E		

Estimated Auction: Spring 2020

This sale is located approximately 26.0 air miles southeast of Clarkia, Idaho, in the Little North Fork Clearwater River drainage. Seedtree and clearcut harvest prescriptions are planned. Ground based skidding and cable yarding will be required. Developments include approximately 2.0 miles of secondary road new construction and 4.0 miles of secondary road opening. Class II streams are present within the sale area.

IDAHO DEPARTMENT OF LANDS FY20 TIMBER SALE PLAN

July 1, 2019 – June 30, 2020

St. Joe
Supervisory Area

SALE NO.	SALE NAME	SUBDIVISION	SEC	T & R	APPROXIMATE ACREAGE	VOLUME
5	Happy Sawlog	Pts. E2NE	34	43N/2E	154	6,220 MBF
		Pts. SENE	34	43N/2E		60 MBF
		Pts. SENW	34	43N/2E		Cedar
		Pts. NESE	34	43N/2E		Products
		Pts. SWNW	35	43N/2E		
		Pts. SW	35	43N/2E		

Estimated Auction: Spring 2020

This sale is located approximately 3.0 miles northeast of Clarkia, Idaho, in the Flewsie Creek, Merry Creek, and Titley Creek drainages. Overstory removal and clearcut harvest prescriptions are planned. Ground based skidding and cable yarding will be required. Developments include approximately 2.0 miles of existing road opening. Class I and Class II streams are present within the sale area.

6	Cleaning Contorta	Pts. Govt. Lots 1-4	4	43N/1W	95	1,670 MBF
		Pts. S2NE	4	43N/1W		40 MBF
		Pts. S2NW	4	43N/1W		Cedar Products

Estimated Auction: Summer 2019

This sale is located approximately 3.0 miles west of Fernwood, Idaho, in the North Fork of Tyson Creek and Tyson Creek drainages. Seedtree and clearcut harvest prescriptions are planned. Ground based skidding and cable yarding will be required. Developments include approximately 1.0 mile of existing road opening. Class II streams are present within the sale area.

7	Annis Divide	Pts. Govt. Lots 1 & 2	36	47N/1E	161	3,780 MBF
		Pts. NE, Pts. N2SE	36	47N/1E		450 MBF Cedar Products

Estimated Auction: Summer 2019

This sale is located approximately 10.0 miles northwest of Calder, Idaho, in the Trout Creek drainage. Shelterwood and clearcut harvest prescriptions are planned. Ground based and cable yarding will be required. Developments include approximately 0.45 mile of secondary road construction and approximately 2.1 miles of secondary road reconstruction. Class II streams are present within the sale area.

IDAHO DEPARTMENT OF LANDS FY20 TIMBER SALE PLAN

July 1, 2019 – June 30, 2020

St. Joe
Supervisory Area

SALE NO.	SALE NAME	SUBDIVISION	SEC	T & R	APPROXIMATE	
					ACREAGE	VOLUME
8	Misplaced 40	Pts. Govt. Lots 2, 3 & 4	1	41N/4E	300	6,150 MBF 220 MBF Cedar Products
		Pts. SWNE, Pts. S2NW	1	41N/4E		
		Pts. SW	8	41N/4E		
		Pts. SWNE, Pts. SENW	16	41N/4E		
		Pts. SW, Pts. E2SE	16	41N/4E		
		Pts. E2SE	17	41N/4E		
		Pts. Govt. Lots 3 & 4, Pts. S2NW	1	42N/4E		
		Pts. SW	1	42N/4E		
		Pts. SENE	2	42N/4E		
		Pts. NW, Pts. N2SW	13	42N/4E		
		Pts. SE	13	42N/4E		
		Pts. NW, Pts. S2SE	23	42N/4E		
		Pts. W2	25	42N/4E		
		Pts. N2NE	26	42N/4E		
		Pts. S2SW	36	42N/4E		
		Pts. E2SW, Pts. SE	19	42N/5E		
		Pts. NWNE, Pts. NENW	30	42N/5E		

Estimated Auction: Fall 2019

This sale is located approximately 40.0 miles southeast of Clarkia, Idaho, in the Floodwood Creek and Stony Creek drainages. Sale Units may be a combination of clearcut, overstory removals and shelterwood harvest prescriptions. Cable yarding and ground based skidding will be required. Developments include approximately 3.0 miles of mainhaul road surfacing with surfacing shot and crushed by the purchaser out of the Scott Road rock pit, and approximately 8.0 miles of secondary road opening. Class I and Class II streams are present within the sale areas.

9	Davis Mountain	Pts. SW, Pts. W2SE	5	44N/1E	350	11,490 MBF 70 MBF Cedar Products
		Pts. SESE	6	44N/1E		
		Pts. Govt. Lots 1 & 2	7	44N/1E		
		Pts. E2NW, Pts. E2NE, Pts. NESE	7	44N/1E		
		Pts. W2NE, Pts. NW, Pts. N2SW	8	44N/1E		
		Pts. E2, Pts. E2NW	12	44N/1W		

Estimated Auction: Summer 2019

This sale is located approximately 4.0 miles northeast of Santa, Idaho, in the Renfro Creek drainage. A shelterwood harvest prescription is planned. Ground based skidding and cable yarding will be required. Developments include approximately 5.2 miles of secondary road construction and 9.0 miles of existing road opening. Class I and II streams are present within the sale area.

IDAHO DEPARTMENT OF LANDS FY20 TIMBER SALE PLAN

July 1, 2019 – June 30, 2020

Clearwater Supervisory Area

SALE NO.	SALE NAME	SUBDIVISION	SEC	T & R	APPROXIMATE	
					ACREAGE	VOLUME
1	13 Mile	Pts. W2NW	15	37N/3E	207	7,000 MBF
		Pts. NENE, Pts. S2NE	16	37N/3E		
		Pts. SENW, Pts. NESW	16	37N/3E		
		Pts. S2SW, Pts. SE	16	37N/3E		
		Pts. NE, Pts. N2NW	21	37N/3E		
		Pts. SENW	21	37N/3E		
		Pts. W2NW	22	37N/3E		

Estimated Auction: Spring 2020

This sale is located approximately 13.0 miles northeast of Orofino, Idaho, in the Whiskey Creek drainage. The sale will be a combination of a seedtree and clearcut removal prescriptions. Tractor and cable yarding methods will be required on this sale. Developments include 5.0 miles of existing spur road opening, 0.30 mile of spur road reconstruction and 5.04 miles of new spur road construction. There are several Class II streams within the sale area and one Class I stream (Whiskey Creek) south of the sale area.

2	Blind Elk	Pts. NE, SENW, N2SW	14	38N/6E	189	2,840 MBF
		Pts. SESW, NWSE	14	38N/6E		
		Pts. W2NE, E2NW	33	38N/6E		

Estimated Auction: Summer 2019

This sale is located 7.0 miles east of Headquarters, Idaho in the Breakfast Creek and West Fork of Elk Creek drainages. The silvicultural prescriptions for the sale area are overstory removal and shelterwood harvests. Tractor yarding will be required on this sale. Developments include approximately 6.5 miles of spur road reconstruction and opening. Several Class II streams are within the sale area.

3	John Lewis	Pts. S2NW, Pts. N2SW	24	39N/4E	251	7,600 MBF
		Pts. W2NW, Pts. NWSW	25	39N/4E		
		Pts. NE, Pts. NWSE	26	39N/4E		
		Pts. N2SW, Pts. SESW	27	39N/4E		
		Pts. NWSE, Pts. S2SE	27	39N/4E		
		Pts. NE	34	39N/4E		
		Pts. W2NW	35	39N/4E		

Estimated Auction: Summer 2019

This sale is located 7.0 miles northwest of Headquarters, Idaho in the Feary Creek drainage. Seedtree, clearcut and overstory removal prescriptions are proposed for the sale area. Tractor and cable yarding will be required on this sale. Developments include approximately 0.46 mile of new spur road construction, 0.48 mile of existing spur road reconstruction and 3.48 miles of road opening. Several Class II streams are present within the sale area.

IDAHO DEPARTMENT OF LANDS FY20 TIMBER SALE PLAN

July 1, 2019 – June 30, 2020

Clearwater Supervisory Area

SALE NO.	SALE NAME	SUBDIVISION	SEC	T & R	APPROXIMATE	
					ACREAGE	VOLUME
4	Big South Headwaters	Pts. Gov't. Lot 4	2	38N/4E	230	4,400 MBF
		Pts. W2NE, Pts. SENE	35	39N/4E		
		Pts. W2, Pts. W2SE	35	39N/4E		

Estimated Auction: Spring 2020

This sale is located approximately 6.0 air miles northwest of Headquarters, Idaho in the South Fork of Big Creek drainage. A combination of seedtree and clearcut prescriptions will be utilized. Tractor and cable yarding will be required on this sale. Developments include approximately 2.0 miles of new spur road construction, 1.0 mile of spur road reconstruction, and 1.3 miles of spur road opening. Several Class II streams flow within the sale area. The uppermost Class I reach of the South Fork of Big Creek is adjacent to a portion of this proposed sale.

5	Lower Cranberry	Pts. SENW, Pts. SW	13	38N/2E	238	7,300 MBF
		Pts. NWSE	13	38N/2E		
		Pts. N2SWSE	13	38N/2E		
		Pts. SESE	14	38N/2E		
		Pts. E2NE	23	38N/2E		
		W2E2NW, W2NW	24	38N/2E		

Estimated Auction: Fall 2019

This sale is located 11.0 miles northeast of Orofino, Idaho in the Cranberry Creek drainage. Clearcut and seedtree prescriptions will be utilized. Tractor and cable yarding will be required on this sale. Developments include approximately 0.76 mile of spur road opening, 0.55 mile of new spur road construction and 1.91 miles of spur road reconstruction. Several Class II streams exist adjacent to and within the sale area. An unnamed Class I stream runs adjacent to the northern sale boundary.

6	Silverback	Pts. NE	22	39N/5E	185	6,500 MBF
		Pts. NWNW, Pts. S2NW	23	39N/5E		
		Pts. E2SW	23	39N/5E		

Estimated Auction: Spring 2020

This sale is located 5.0 miles north of Headquarters, Idaho in the Beaver Creek drainage. Clearcut and shelterwood silvicultural prescription will be utilized. Tractor, cable and downhill cable yarding will be required on this sale. Developments include approximately 0.7 mile of new spur road construction and 6.72 miles of spur road reconstruction. Several Class II streams lie within the sale boundary.

7	Camp R Cedar (Dual Entry)	Pts. S2NE, Pts. SW, Pts. SE	1	38N/2E	502	1,830 MBF 5,650 Poles
		Pts. NESE	2	38N/2E		
		Pts. N2, Pts. NESW, Pts. NWSE	12	38N/2E		

Estimated Auction: Summer 2019

This sale is located approximately 11.0 air miles northeast of Orofino, Idaho. Sale will utilize a seedtree silvicultural prescription. Tractor and cable yarding will be required on this sale. Developments include approximately 5.75 miles of road opening. There are several intermittent Class II streams within the sale area.

IDAHO DEPARTMENT OF LANDS FY20 TIMBER SALE PLAN

July 1, 2019 – June 30, 2020

Clearwater Supervisory Area

SALE NO.	SALE NAME	SUBDIVISION	SEC	T & R	APPROXIMATE ACREAGE	VOLUME
8	Whiskey Branch	Pts. NESW, Pts. S2SW	9	37N/4E	105	2,900 MBF
		Pts. NW	16	37N/4E		
		Pts. NE, Pts. NESE	17	37N/4E		

Estimated Auction: Fall 2019

This sale is located approximately 14.0 air miles northeast of Orofino, Idaho in the Whiskey Creek drainage. Seedtree and clearcut prescriptions are proposed for the sale area. Tractor and cable yarding will be required on this sale. Developments include approximately 2.7 miles of secondary road opening, 0.2 mile of new spur road construction, and 1.4 miles of spur road opening. Several Class II streams and draws are present within the sale area and one Class I stream (Whiskey Creek) is adjacent to the northern boundary of the sale.

9	Evans OSR	Pts. E2SE	19	39N/4E	224	1,630 MBF
		Pts. NE	20	39N/4E		
		Pts. S2NW, Pts. SW	20	39N/4E		
		Pts. NWSE	20	39N/4E		

Estimated Auction: Fall 2019

This sale is located 7.0 miles northwest of Headquarters, Idaho in the Lewis Creek drainage. The silvicultural prescription for the entire sale area is an overstory removal. Tractor and cable yarding will be required on this sale. Developments include approximately 3.25 miles of spur road opening. Several Class II streams are present within the sale boundary.

10	West Nelson	Pts. SW, Pts. NWSE	3	38N/2E	214	4,000 MBF
		Pts. SESE	4	38N/2E		
		Pts. NWNE, Pts. S2NE	9	38N/2E		
		Pts. N2SE	9	38N/2E		
		Pts. N2NW, Pts. SWNW	10	38N/2E		

Estimated Auction: Spring 2020

This sale is located approximately 12.0 air miles north of Orofino, Idaho in unnamed drainages that flow directly into Dworshak Reservoir. Sale will utilize a seedtree silvicultural prescription. Tractor and cable yarding will be required. Developments include approximately 1.07 miles of new spur road construction. Three Class II streams flow either common to the sale boundary or through the sale area.

Additional small volume sales: 0 0 MBF

TOTALS: 2,345 46,000 MBF
5,650 Poles

IDAHO DEPARTMENT OF LANDS FY20 TIMBER SALE PLAN

July 1, 2019 – June 30, 2020

Ponderosa
Supervisory Area

SALE NO.	SALE NAME	SUBDIVISION	SEC	T & R	APPROXIMATE	
					ACREAGE	VOLUME
1	Long Meadow OSR	Pts. Govt. Lots 2, 3 & 4	2	38N/1E	655	1,930 MBF
		Pts. SWNE	2	38N/1E		
		Pts. S2NW, Pts. N2SW	2	38N/1E		
		Pts. Govt. Lots 3 & 4	19	38N/1E		
		Pts. SE	24	38N/1E		
		Pts. Govt. Lots 2, 3 & 4	31	38N/1E		
		Pts. SE	35	38N/1E		
		Pts. NE, Pts. S2NW	36	38N/1E		
		Pts. SW, Pts. N2SE	36	38N/1E		

Estimated Auction: Summer 2019

This sale is located approximately 11.0 air miles northeast of Southwick, Idaho in the North Fork of Dick's Creek and Long Meadow Creek drainages. This sale will be harvested utilizing an overstory removal silvicultural prescription. Ground based and cable yarding methods are required to harvest this sale. Developments include approximately 4.90 miles of spur road opening. There are several Class II streams within and adjacent to the sale area, all of which are tributaries to Dworshak Reservoir.

2	Drift Creek	Pts. SENE, Pts. E2SE	21	38N/1E	355	8,710 MBF
		Pts. SWNW, Pts. NWSW	22	38N/1E		
		Pts. SESW	27	38N/1E		
		Pts. NE, Pts. NESE, Pts. S2SE	33	38N/1E		
		Pts. NW, W2SW, NESE	34	38N/1E		

Estimated Auction: Summer 2019

This sale is located approximately 7.0 air miles east of Southwick, Idaho in the Drift Creek and South Fork of Dick's Creek drainages. This sale will be harvested utilizing seedtree and clearcut silvicultural prescriptions. Ground based and cable yarding methods are required to harvest this sale. Developments include approximately 0.46 mile of spur road construction and approximately 4.85 miles of spur road opening. The sale has several Class II streams within and adjacent to the sale area, all of which are tributaries to Dworshak Reservoir.

3	Flannigan	Pts.	24	41N/5W	480	4,900 MBF
----------	------------------	------	----	--------	-----	-----------

Estimated Auction: Spring 2019

This sale is located approximately 3.0 miles south of Potlatch, Idaho in the Flannigan Creek and Rock Creek drainages. This sale will be harvested utilizing overstory removal and clearcut silvicultural prescriptions. Ground based yarding methods will be required to harvest this sale. Developments include approximately 2.81 miles of secondary road opening and 2.15 miles of secondary road reconstruction. The sale is adjacent to a Class I stream and there are several intermittent Class II streams within the sale area, all of which are tributaries to Flannigan Creek and Rock Creek.

IDAHO DEPARTMENT OF LANDS FY20 TIMBER SALE PLAN

July 1, 2019 – June 30, 2020

Ponderosa Supervisory Area

SALE NO.	SALE NAME	SUBDIVISION	SEC	T & R	APPROXIMATE	
					ACREAGE	VOLUME
4	Manassas	Pts. SE	28	40N/2E	290	8,490 MBF
		Pts. NE, Pts. E2NW	33	40N/2E		
		Pts. NESW, Pts. SE	33	40N/2E		

Estimated Auction: Spring 2019

This sale is located approximately 2.0 air miles west of Elk River, Idaho in the Bull Run Creek, Lindley Creek, and Shattuck Creek drainages. This sale will be harvested utilizing seedtree, overstory removal, and clearcut silvicultural prescriptions. Ground based and cable yarding methods are required to harvest this sale. Developments include approximately 2.50 miles of spur road construction and 1.75 miles of spur road opening. The sale has several Class II streams within and adjacent to the sale area, all of which are tributaries to Dworshak Reservoir.

5	Ruby Cedar Mine (Dual Entry)	Pts. SESW, Pts. SWSE	9	40N/1E	80	1,055 MBF 2,075 Poles
		Pts. Govt. Lot 1	16	40N/1E		
		Pts. W2NE, Pts. SENE	16	40N/1E		
		Pts. NENW, Pts. NWSE	16	40N/1E		

Estimated Auction: Summer 2019

This sale is located approximately 4.0 air miles southeast of Bovill, Idaho in the Ruby Creek drainage. This sale will harvest pole quality cedar and cedar sawlog. Ground based and cable yarding methods are required to harvest this sale. Developments include approximately 0.86 mile of spur road new construction, 1.10 miles of spur road reconstruction, and 4.75 miles of spur road opening. The sale is adjacent to Class I streams and has several Class II streams within and adjacent to the sale area, all of which are tributaries to East Fork of the Potlach River.

6	Sandy Bear	Pts. NW, Pts. NWSW	15	41N/2W	315	5,650 MBF
		Pts. Govt. Lot 1-4, Pts. S2NE	16	41N/2W		
		Pts. SENW	16	41N/2W		
		Pts. N2S2	16	41N/2W		
		Pts. E2SW, Pts. W2SE	20	41N/2W		
		Pts. E2NW	29	41N/2W		

Estimated Auction: Summer 2019

This sale is located approximately 6.5 air miles northwest of Deary, Idaho in the Little Bear Creek and Little Sand Creek drainages. This sale will be harvested utilizing clearcut and overstory removal silvicultural prescriptions. Ground based and cable yarding methods are required to harvest this sale. Developments include approximately 0.1 mile of spur road new construction, 3.10 miles of spur road reconstruction and approximately 500 feet of spur road surfacing. There are Class II streams within each unit of the sale area, and the Little Sand Creek Class I stream is directly adjacent to one unit.

IDAHO DEPARTMENT OF LANDS FY20 TIMBER SALE PLAN

July 1, 2019 – June 30, 2020

Ponderosa
Supervisory Area

SALE NO.	SALE NAME	SUBDIVISION	SEC	T & R	APPROXIMATE	
					ACREAGE	VOLUME
7	Seemless Swamp	Pts. W2NE, Pts. SENE, Pts. SENW	28	39N/3E	298	7,900 MBF
		Pts. SW, N2SE, Pts. SWSE	28	39N/3E		
		Pts. N2NW, Pts. SWNW, Pts. NWSW	33	39N/3E		
		Pts. Govt. Lots 8 & 9, Pts. E2SW	30	39N/4E		
		Pts. Govt. Lot 3, Pts. NWNE	31	39N/4E		
		Pts. NENW	31	39N/4E		

Estimated Auction: Spring 2020

This sale is located approximately 8.0 air miles southeast of Elk River, Idaho in the Swamp Creek, Meadow Creek, Baldy Bear Creek, and Bishop Creek drainages. This sale will be harvested utilizing seedtree, overstory removal, and clearcut silvicultural prescriptions. Ground based and cable yarding methods are required to harvest this sale. Developments include approximately 1.30 miles of spur road construction, 1.26 miles of spur road reconstruction, 8.60 miles of spur road opening, and 0.30 mile of spur road surfacing. The sale has several Class II streams within and adjacent to the sale area, all of which are tributaries to Dworshak Reservoir.

8	Purdue	Pts. NWNE, Pts. NW, Pts. SE	17	41N/1E	425	6,100 MBF
		Pts Govt. Lot 2	18	41N/1E		
		Pts. N2, Pts. NWSE	18	41N/1E		

Estimated Auction: Spring 2019

This sale is located approximately 2.5 air miles north of Bovill, Idaho in the Nat Brown and Purdue Creek drainages. This sale will be harvested utilizing clearcut and overstory removal silvicultural prescriptions. Ground based and cable yarding methods are required to harvest this sale. Developments include approximately 1.50 miles of spur road construction, 1.90 miles of spur road reconstruction, and 0.75 mile of spur road opening. The sale is adjacent to Class I streams and has Class II streams within and adjacent to the sale area, all of which are tributaries to the East Fork of the Potlatch River.

Additional small volume sales: 100 265 MBF

TOTALS: 2,998 45,000 MBF
2,075 Poles

IDAHO DEPARTMENT OF LANDS FY20 TIMBER SALE PLAN

July 1, 2019 – June 30, 2020

Maggie Creek
Supervisory Area

SALE NO.	SALE NAME	SUBDIVISION	SEC	T & R	APPROXIMATE ACREAGE	APPROXIMATE VOLUME
1	Fidlers Stash	Pts. W2NE, Pts. SENE	33	35N/4E	155	1,000 MBF
		Pts. E2NW, Pts. N2SE	33	35N/4E		

Estimated Auction: Fall 2019

This sale is located 3.0 miles southwest of Weippe, Idaho in the Incendiary Creek drainage and in the drainage of an unnamed Class II tributary of Lolo Creek. In order to meet silvicultural objectives, timber harvest will include one shelterwood unit. Harvesting will be accomplished with ground based yarding methods. Developments will include approximately 1.0 mile of spur road reconstruction and 0.60 mile of spur road opening. Two Class II intermittent streams exist within the sale area.

2	Eastside School	Pts. S2SW	23	33N/5E	262	6,700 MBF
		Pts. NWNW	26	33N/5E		
		Pts. NENE	27	33N/5E		
		Pts. E2, Pts. SENW, Pts. E2SW	36	34N/5E		

Estimated Auction: Summer 2019

This sale is located 7.0 miles northeast of Kooskia, Idaho in the Maggie Creek and Sutler Creek drainages. In order to meet silvicultural objectives, timber harvest will include a clearcut and seedtree prescriptions. Tractor yarding will be required. Development work includes approximately 1.5 miles of secondary new road construction and 0.3 mile of spur road reconstruction. There are no Class I streams adjacent or in the sale area. There are Class II streams within the sale area.

3	Lost Heywood	Pts. Govt. Lot 4	4	35N/5E	482	12,000 MBF
		Pts. Govt. Lots 1-3, Pts. SWNE	5	35N/5E		
		Pts. NE, Pts. S2NW, Pts. SW, SE	32	35N/5E		
		Pts. S2NW, Pts. N2SW, Pts. SWSW	33	36N/5E		

Estimated Auction: Winter 2020

This sale is located approximately 4.0 miles northeast of Weippe, Idaho in the Heywood Creek drainage. Seedtree and shelterwood prescriptions are planned with this sale. Harvesting operations will be accomplished using ground based systems. Developments include approximately 2.8 miles of spur new road construction, 0.75 mile of spur road reconstruction, and 2.3 miles of spur road opening. Three Class II intermittent streams are present within the sale area.

IDAHO DEPARTMENT OF LANDS FY20 TIMBER SALE PLAN

July 1, 2019 – June 30, 2020

Maggie Creek
Supervisory Area

SALE NO.	SALE NAME	SUBDIVISION	SEC	T & R	APPROXIMATE ACREAGE	VOLUME
4	Scolytus & Rice	Pts. S2SE	14	28N/1W	319	1,300 MBF
		Pts. N2NE, Pts. SENE, Pts. NESE	23	28N/1W		
		Pts. NWSW, Pts. S2SW	24	28N/1W		
		Pts. NW	25	28N/1W		

Estimated Auction: Fall 2019

This sale is located 18.0 miles southwest of Grangeville, Idaho in the Rice Creek drainage. A shelterwood silvicultural prescription will be applied. Harvesting methods will include tractor and cable yarding. Developments will include approximately 5.9 miles of spur road reconstruction and 0.25 mile of new spur road construction. Rice Creek (Class I) is directly adjacent to the sale area and an intermittent Class II stream intersects the sale area.

Additional small volume sales:

0 0 MBF

TOTALS: 1,218 21,000 MBF

IDAHO DEPARTMENT OF LANDS FY20 TIMBER SALE PLAN

July 1, 2019 – June 30, 2020

Payette Lakes
Supervisory Area

SALE NO.	SALE NAME	SUBDIVISION	SEC	T & R	APPROXIMATE	
					ACREAGE	VOLUME
1	Sky High Ton	Pts.	2	14N/4E	190	11,910 Tons (2,105 MBF)
		Pts.	3	14N/4E		
		Pts.	10	14N/4E		
		Pts.	11	14N/4E		

Estimated Auction: Spring 2020

This sale is located about 7.0 miles northeast of Cascade, Idaho in the Beaver Creek drainage. The silvicultural prescription is seedtree. The sale will be harvested using skyline and ground based harvesting methods. Developments include approximately 9.7 miles of spur road and 5.0 miles of secondary road opening. All streams in the sale area are Class II.

2	Bacon Ton	Pts.	16	11N/4E	640	11,320 Tons (2,000 MBF)
---	------------------	------	----	--------	-----	----------------------------

Estimated Auction: Spring 2020

This sale is located about 16.0 miles south southeast of Cascade, Idaho in the Bacon Creek drainage. The silvicultural prescription will be a combination of clearcut, seedtree and group/individual tree selection. The sale will be harvested using skyline and ground based harvesting methods. Developments include approximately 6.5 miles of spur road opening and 9.8 miles of spur road reconstruction. A portion of Bacon Creek is Class I. The remainder of the streams in the sale area are Class II.

3	Sonner Ton	Pts.	20	17N/2W	407	27,245 Tons (5,280 MBF)
		Pts.	21	17N/2W		
		Pts.	27	17N/2W		
		Pts.	28	17N/2W		
		Pts.	29	17N/2W		

Estimated Auction: Fall 2019

This sale is located approximately 7.0 miles northwest of Council, Idaho in the Sonner, Hanson and Lakey Creek drainages. The silvicultural prescription is seedtree. The sale will be harvested using skyline and ground based harvesting methods. Developments include approximately 4.6 miles of main road and 5.8 miles of spur road opening, 2.3 miles of spur road reconstruction and 1.2 miles of spur road construction. Class II streams are present on the sale area.

IDAHO DEPARTMENT OF LANDS FY20 TIMBER SALE PLAN

July 1, 2019 – June 30, 2020

Payette Lakes
Supervisory Area

SALE NO.	SALE NAME	SUBDIVISION	SEC	T & R	APPROXIMATE ACREAGE	APPROXIMATE VOLUME
4	Potter Ton	Pts.	31	18N/4E	503	26,000 Tons (4,600 MBF)
		Pts.	32	18N/4E		

Estimated Auction: Fall 2019

This sale is located approximately 6.0 miles southeast of McCall, Idaho in the Louie Creek and Boulder Creek drainage. The silvicultural prescription will be a shelterwood and clearcut harvest. All of the sale volume will be harvested with ground based equipment. Developments include approximately 12.4 miles of spur road reconstruction, 0.11 mile of spur road construction, 0.09 mile of spur road abandonment and 0.88 mile of secondary road opening. Approximately 0.26 mile of spur road is planned to be surfaced with pit run rock. All perennial and intermittent streams are Class II within the sale area.

5	Lightning Ton	Pts.	36	25N/1E	190	5,933 Tons (1,050 MBF)
----------	----------------------	------	----	--------	-----	---------------------------

Estimated Auction: Fall 2019

This sale is located approximately 3.0 miles northeast of Riggins, Idaho in the Lightning Creek drainage. A shelterwood harvest prescription will be implemented on the sale. The sale will be harvested using skyline and ground based harvesting methods. Developments include approximately 7.13 miles of spur road reconstruction. Portions of two intermittent Class II streams are located within the sale area.

6	Mudpuppy Ton	Pts.	31	20N/1E	330	18,617 Tons (3,295 MBF)
----------	---------------------	------	----	--------	-----	----------------------------

Estimated Auction: Spring 2020

This sale is located approximately 6.0 miles northwest of New Meadows, ID in the Mud Creek drainage. A clearcut, seedtree, and overstory removal silvicultural prescriptions will be implemented on the sale. Tractor harvesting systems will be used on the entire sale. Developments include approximately 6.05 miles of spur road reconstruction and 0.5 mile of spur road construction. Portions of three Class II streams are located within the sale area.

Additional small volume sales:	144	4,415 Tons (670 MBF)
---------------------------------------	-----	-------------------------

TOTALS:	2,404	105,440 Tons (19,000 MBF)
----------------	-------	------------------------------

IDAHO DEPARTMENT OF LANDS FY20 TIMBER SALE PLAN

July 1, 2019 – June 30, 2020

Southwest
Supervisory Area

SALE NO.	SALE NAME	SUBDIVISION	SEC	T & R	APPROXIMATE	
					ACREAGE	VOLUME
1	Center Howell Ton	Pts.	10	10N/3E	408	33,000 Tons (6,000 MBF)
		Pts.	15	10N/3E		
		Pts.	16	10N/3E		
		Pts.	21	10N/3E		
		Pts.	22	10N/3E		
		Pts.	23	10N/3E		
		Pts.	24	10N/3E		
		Pts.	25	10N/3E		
		Pts.	26	10N/3E		
		Pts.	27	10N/3E		

Estimated Auction: Spring 2020

This sale is located approximately 8.0 miles south of Smiths Ferry, Idaho in the headwaters of the Howell Creek drainage and unnamed tributaries in the North Fork Payette River drainage. Clearcut harvest prescriptions are necessary and planned for in all 5 units. Tractor, off road jammer, and skyline cable yarding harvest systems are required. Developments include approximately 0.93 mile of secondary road construction, 0.44 mile of spur road construction, 1.66 miles of secondary road reconstruction, 4.76 miles of spur road reconstruction, and 12.69 miles of road opening. Class II streams are present within the sale area.

2	New York Ton	Pts. SW1/4	3	5N/5E	750	26,000 Tons (4,000 MBF)
		Pts.	4	5N/5E		
		Pts. E1/2	8	5N/5E		
		Pts.	9	5N/5E		
		Pts. NWNW1/4	10	5N/5E		

Estimated Auction: Spring 2020

This sale is located approximately 3.0 miles southwest of Idaho City, Idaho in the Mores Creek drainage. The sale will be a mark to cut selective harvest prescription. Tractor, off road jammer and skyline cable harvest systems are required. Developments include approximately 1.31 miles of spur road construction, 1.70 miles of spur road reconstruction, 5.46 miles of spur road opening and 7.29 miles of secondary road opening. Some sale units are adjacent to Mores Creek, a Class I stream. Class II streams are present within the sale area.

Additional small volume sales: 0 MBF

TOTALS: 1,158 59,000 Tons
(10,000 MBF)

IDAHO DEPARTMENT OF LANDS FY20 TIMBER SALE PLAN

July 1, 2019 – June 30, 2020

Eastern Supervisory Area

SALE NO.	SALE NAME	SUBDIVISION	SEC	T & R	APPROXIMATE ACREAGE	VOLUME
1	Brockman OSR Ton	Pts. Govt. Lot 7, Pts. SESW	3	2S/42E	505	13,500 Tons (2,000 MBF)
		Pts. SWSE	3	2S/42E		
		Pts. N2, Pts. E2SW, Pts. SE	10	2S/42E		
		Pts. NW, Pts. S2SW	11	2S/42E		
		Pts. NWNE, Pts. NW	14	2S/42E		
		Pts. N2NE, Pts. SENE	15	2S/42E		

Estimated Auction: Spring 2020

This sale is located 25.0 air miles southeast of Idaho Falls, Idaho in both the Sawmill and Lava Creek drainages. Harvest prescription will be an overstory removal. Tractor skidding will be utilized. Developments include approximately 6.0 miles of spur road opening and improvement. There are no Class I streams within the sale boundary. There are several Class II streams within the sale boundary.

2	Clear Creek Ton	Pts. Govt. Lot 2	31	04N/18E	200	6,750 Tons (1,000 MBF)
		Pts. S2NE, Pts. S2	36	04N/17E		

Estimated Auction: Spring 2020

This sale is located 1.0 air mile southwest of Ketchum, Idaho in the Clear Creek drainage and flows into Comstock Ditch. Harvest prescription will be a shelterwood treatment. Tractor skidding will be utilized. Developments include approximately 1.5 miles of spur road construction. There are no Class I or Class II streams within the sale boundaries.

3	Sawmill OSR Ton	Pts. Govt. Lots 1, 2 & 3	14	02S/42E	420	13,500 Tons (2,000 MBF)
		Pts. S2N2, Pts. N2S2	14	02S/42E		
		Pts. NENE	15	02S/42E		
		Pts. N2	23	02S/42E		
		Pts. NW	24	02S/42E		

Estimated Auction: Spring 2020

This sale is located 30.0 air miles southeast of Idaho Falls, Idaho in both the Sawmill and Brockman Creek drainages. Harvest prescription will be an overstory removal. Tractor skidding will be utilized. Developments include approximately 5.0 miles of spur road opening and improvement. There are no Class I streams within the sale boundary. There are several Class II streams within the sale boundary.

Additional small volume sales: 0 0 MBF

TOTALS: 1,125 33,750 Tons
(5,000 MBF)