



Expiring and Unleased Land Lease Application and Issuance Process: Grazing, Farming, Conservation, Non-Commercial Recreation, and Communication Site Leases

In accordance with [Executive Order 2020-02, Transparency in Agency Guidance Documents](#), guidance documents promulgated by the department are not new laws. They represent an interpretation of existing law, except as authorized by Idaho Code or incorporated into a contract.

This document may reference other documents that are not currently available online. Copies of these reference documents may be obtained by filing a public records request at <https://www.idl.idaho.gov/public-records-request>.

Agency Contact

Bureau Chief – Real Estate Services

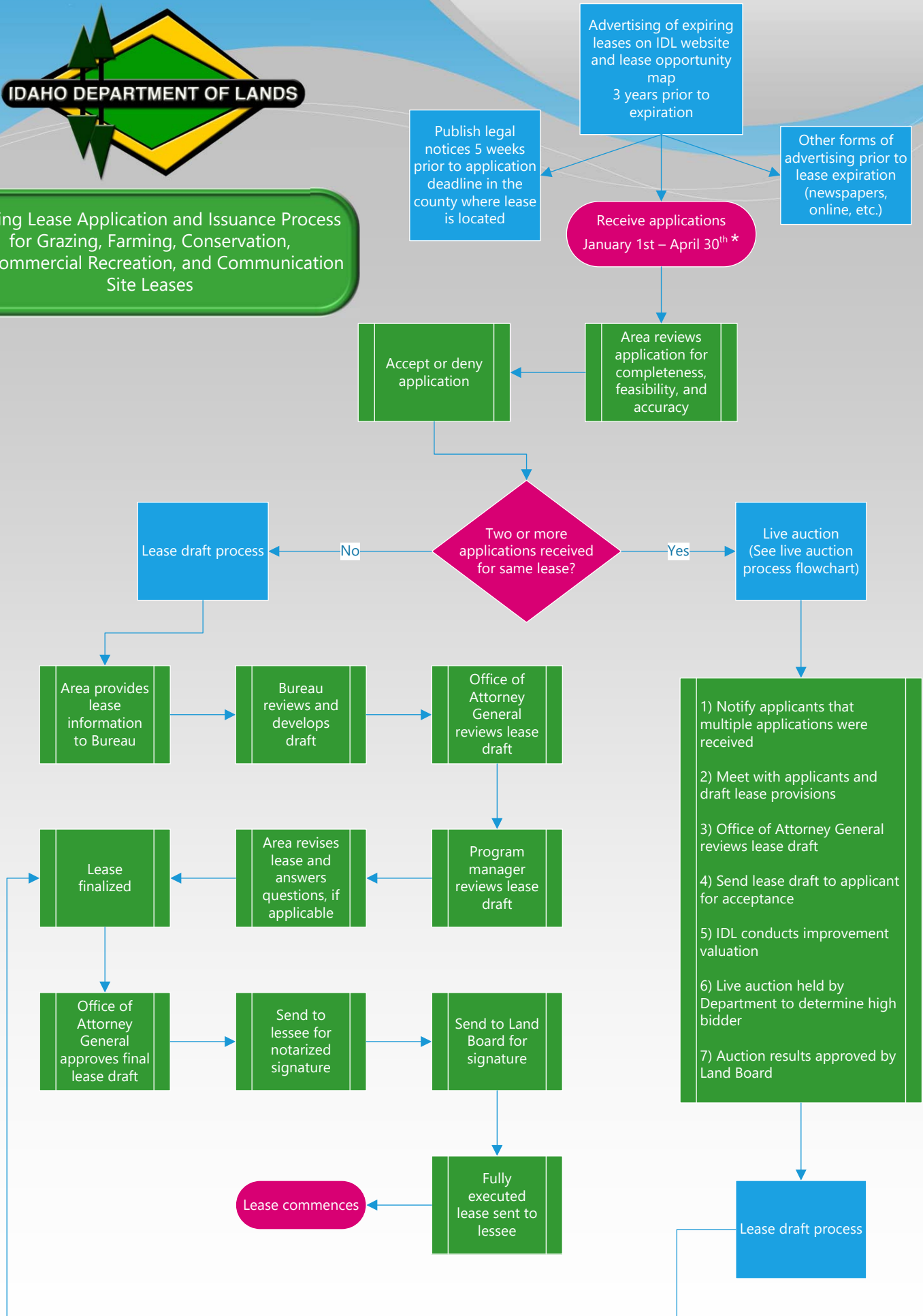
Purpose

To provide an overview of the expiring lease application process to interested parties, applicants, and lessees. These documents outline the process as set forth in [IDAPA 20.03.14 – Rules Governing Grazing, Farming, Conservation, Noncommercial Recreation, and Communication Site Leases](#).

Contents

1. Process for Expiring Lease Application and Issuance for Grazing, Farming, Conservation, Noncommercial Recreation, and Communication Site Leases
2. Process for Unleased Land Application and Issuance for Grazing, Farming, Conservation, Noncommercial Recreation, and Communication Site Leases

Expiring Lease Application and Issuance Process for Grazing, Farming, Conservation, Noncommercial Recreation, and Communication Site Leases





Unleased Land Application and Lease Issuance Process for Grazing, Farming, Conservation, Noncommercial Recreation, and Communication Site Leases

