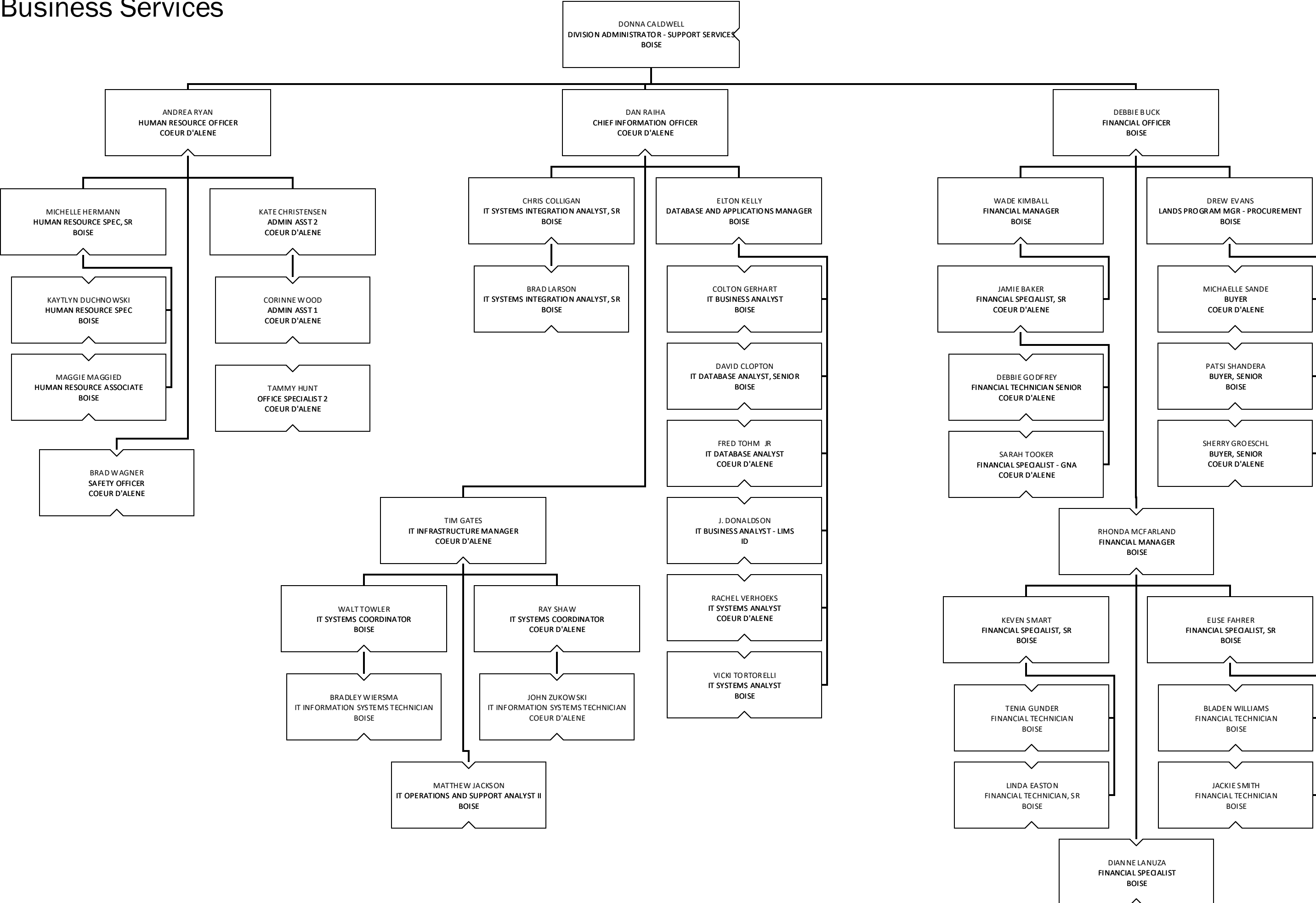
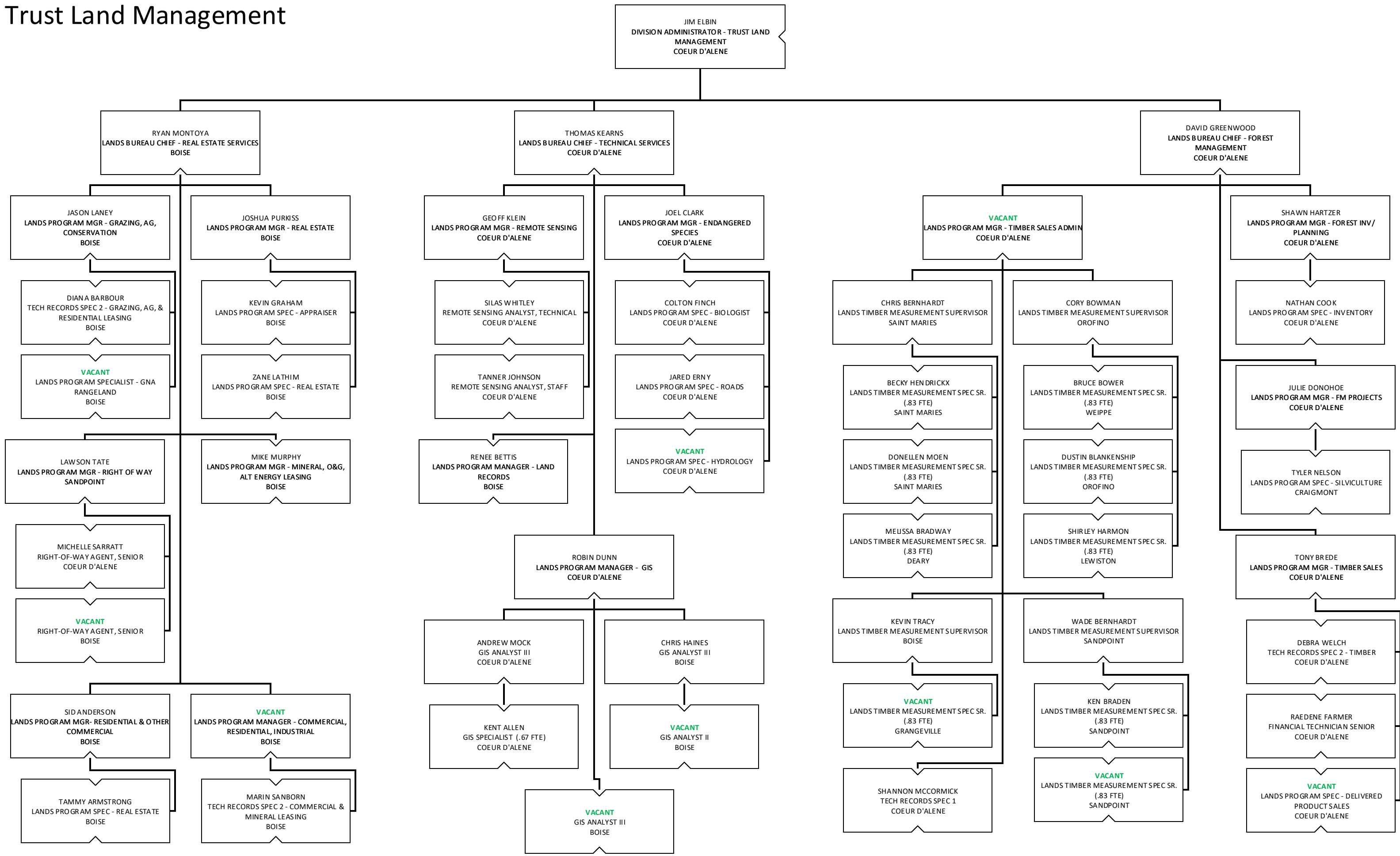


Idaho Department of Lands Organization Chart

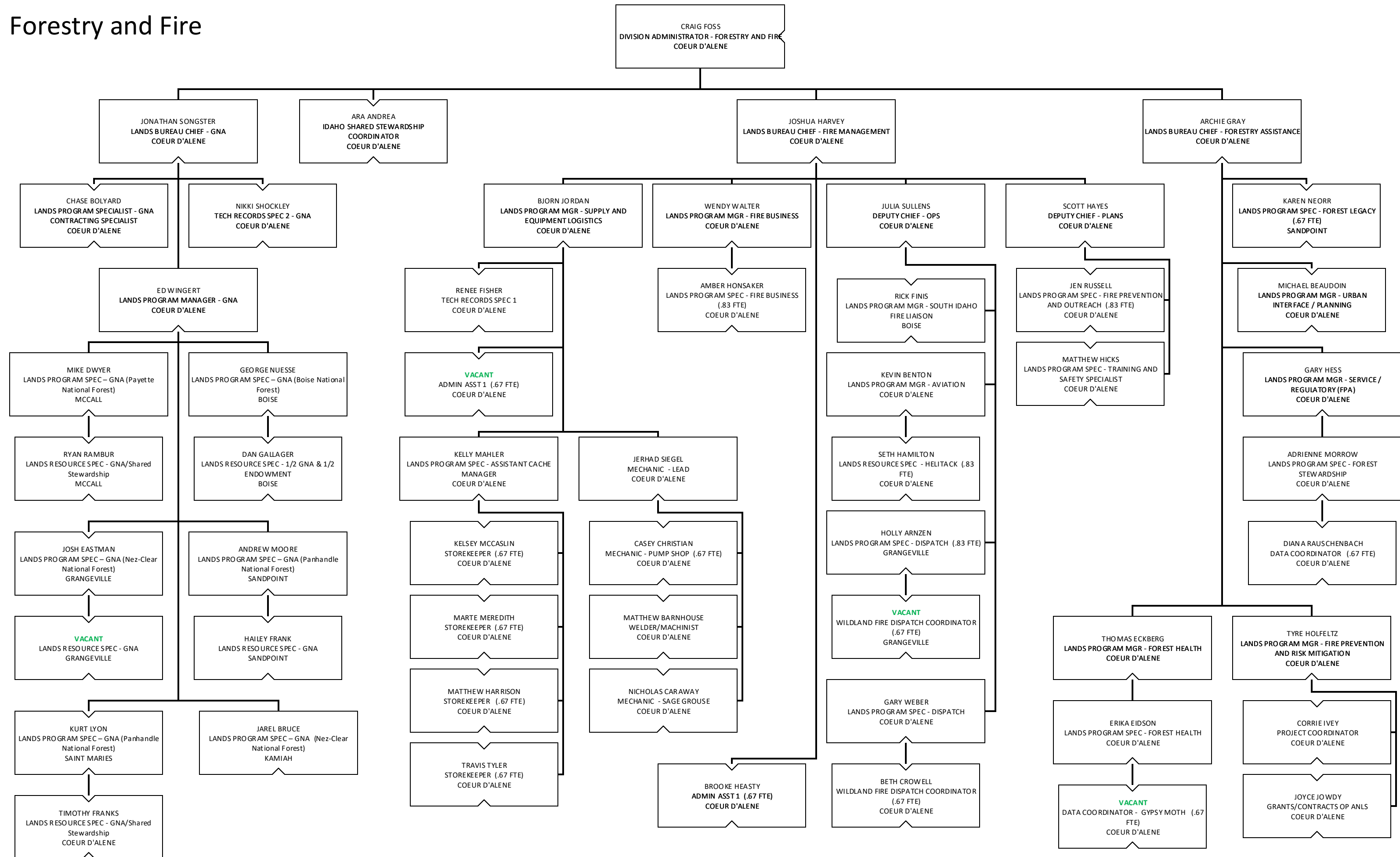
Business Services



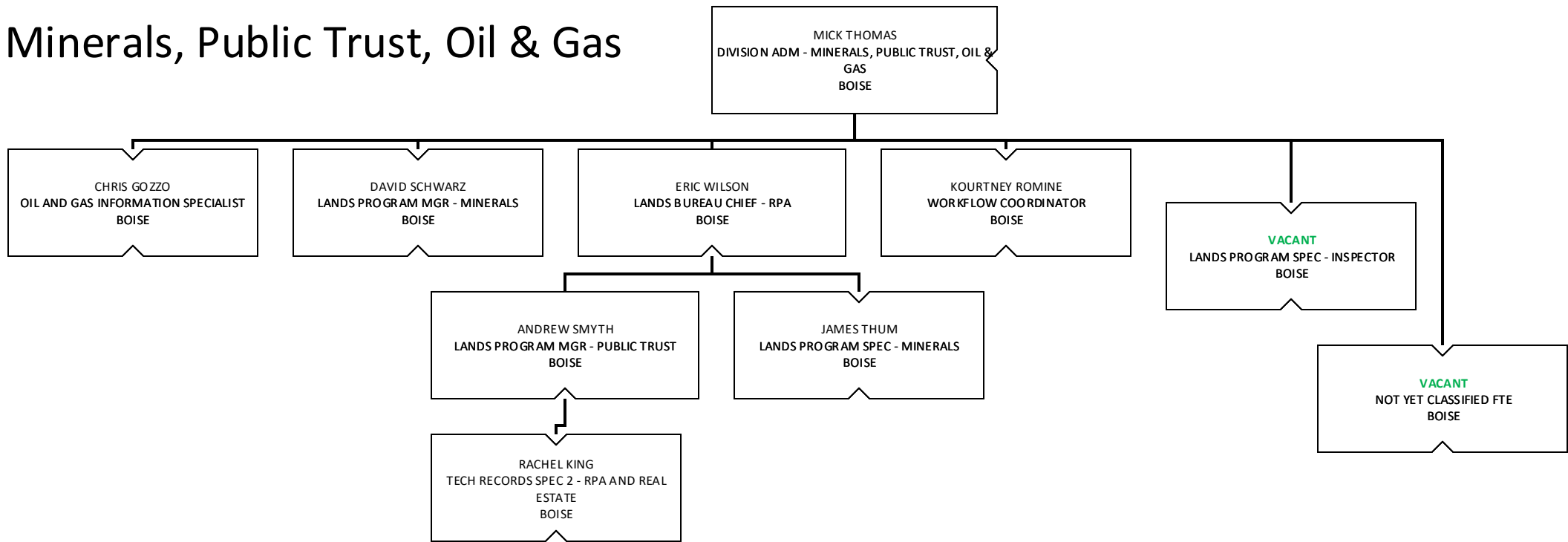
Trust Land Management



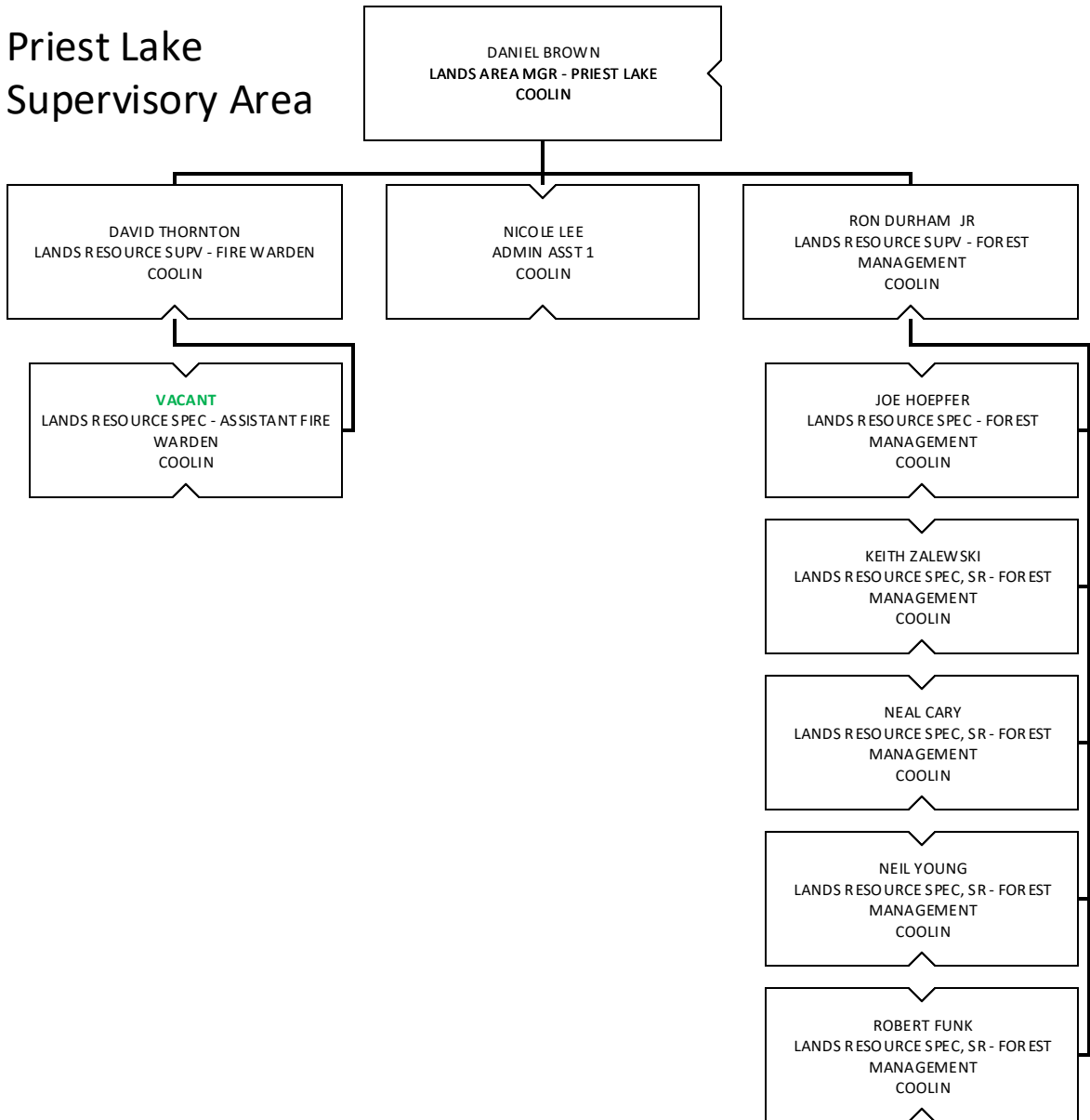
Forestry and Fire



Minerals, Public Trust, Oil & Gas



Priest Lake Supervisory Area



Pend Oreille Lake Supervisory Area

TOM FLEER
LANDS AREA MGR - PEND OREILLE LAKE
SANDPOINT

CHAD RAMSAY
LANDS RESOURCE SUPV - FOREST
MANAGEMENT
SANDPOINT

KEN HOMIK
LANDS RESOURCE SUPV - FIRE WARDEN
BONNERS FERRY

NATHAN ROGERS
LANDS RESOURCE SUPV - FIRE WARDEN
SANDPOINT

TAMARA PALANIUK
ADMIN ASST 1
SANDPOINT

VIKKI SNIDER
ADMIN ASST 1
BONNERS FERRY

CR CHRISTIANS
LANDS RESOURCE SPEC, SR - FOREST
MANAGEMENT
BONNERS FERRY

JASON WILKERSON
LANDS RESOURCE SPEC - ASSISTANT FIRE
WARDEN
BONNERS FERRY

ASHLEY STONEHAM
LANDS RESOURCE SPEC, SR - ASSISTANT
FIRE WARDEN
SANDPOINT

JEANNIE NEZ PERCE
OFFICE SPECIALIST 2
SANDPOINT

SHANNON SCHAEFFER
OFFICE SPECIALIST 2 (.67 FTE)
BONNERS FERRY

EDDIE GRAFTON
LANDS RESOURCE SPEC - FOREST
MANAGEMENT
SANDPOINT

JIM KIBLER
LANDS RESOURCE SPEC, SR - PRIVATE
FORESTRY SPECIALIST
BONNERS FERRY

CHRIS REMSEN
LANDS RESOURCE SPEC, SR - PRIVATE
FORESTRY SPECIALIST
SANDPOINT

KAREN ROBINSON
LANDS RESOURCE SPEC, SR - PRIVATE
FORESTRY SPECIALIST (.67 FTE)
SANDPOINT

ERIC VALIQUETTE
LANDS RESOURCE SPEC, SR - FOREST
MANAGEMENT
SANDPOINT

JONATHAN LUHNOW
LANDS RESOURCE SPEC, SR - FOREST
MANAGEMENT
BONNERS FERRY

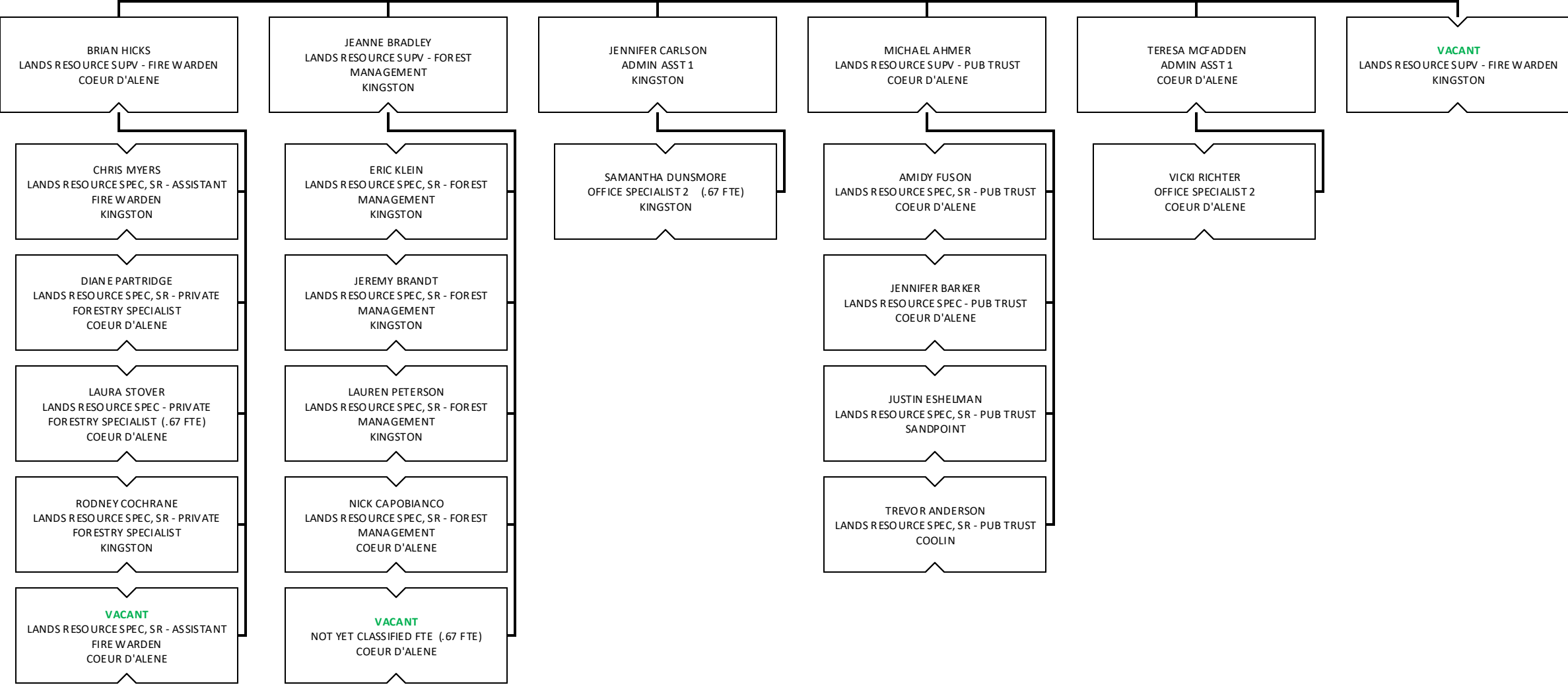
VACANT
LANDS RESOURCE SPEC - PRIVATE
FORESTRY SPECIALIST
SANDPOINT

SPENCER HANSON
LANDS RESOURCE SPEC, SR - FOREST
MANAGEMENT
BONNERS FERRY

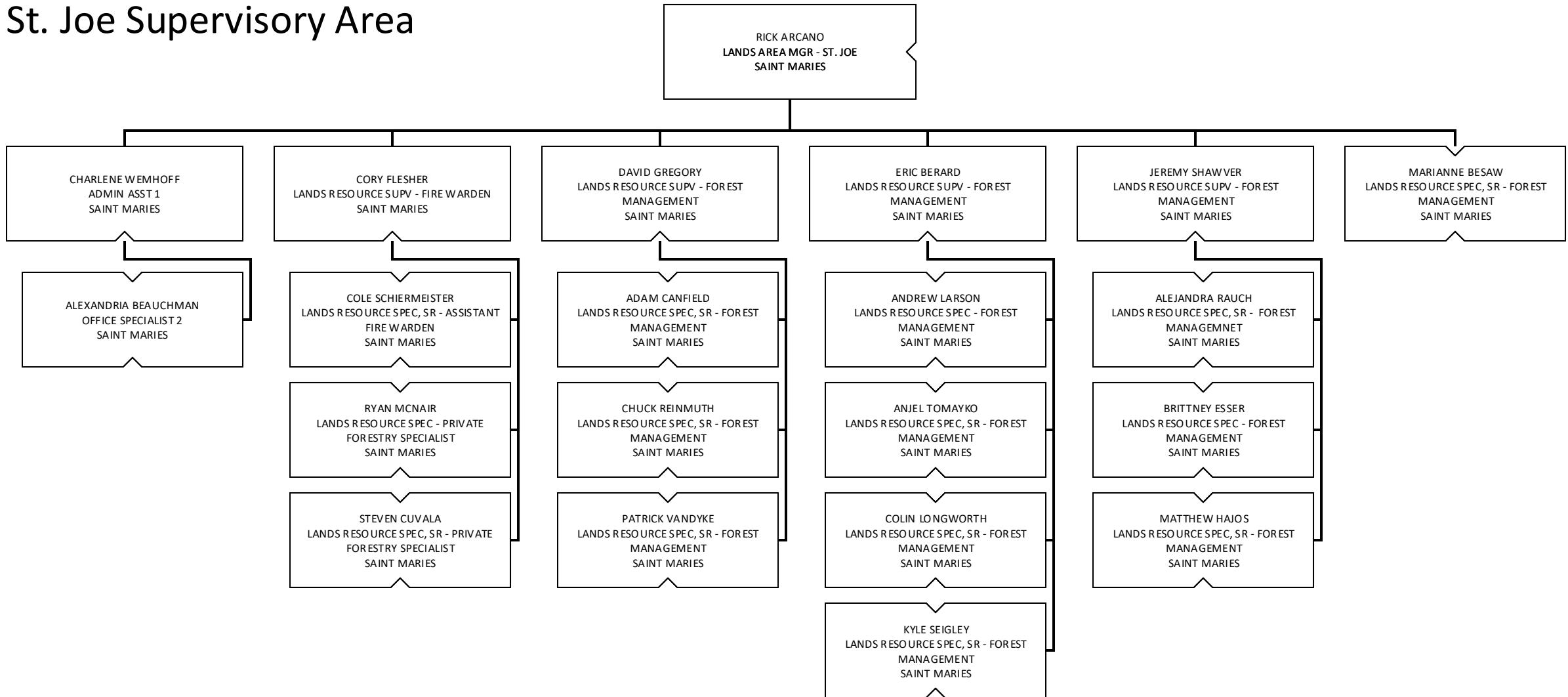
TAYLOR BRADISH
LANDS RESOURCE SPEC, SR - FOREST
MANAGEMENT
SANDPOINT

MICA Supervisory Area

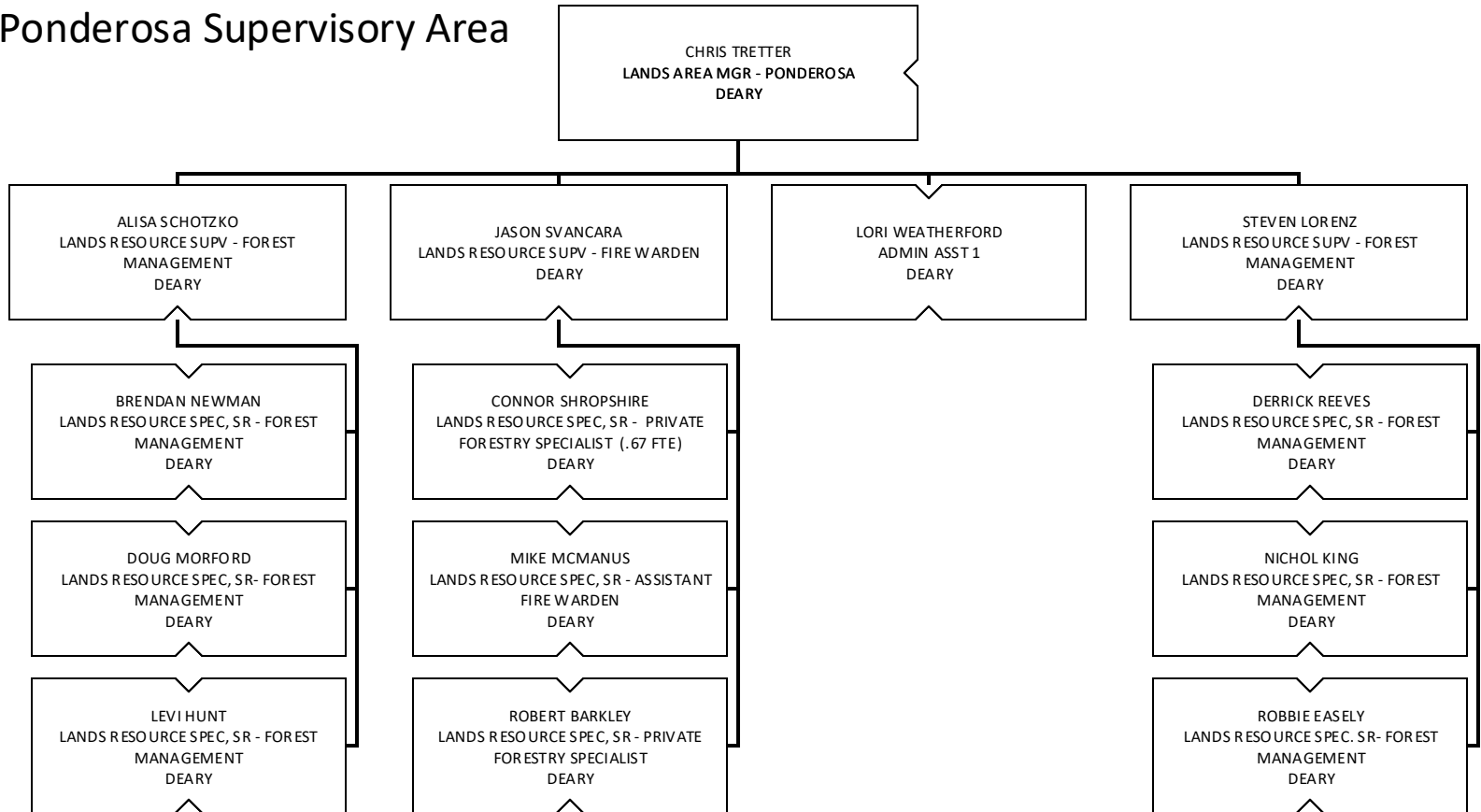
ERIK SJOQUIST
LANDS AREA MGR - MICA
COEUR D'ALENE



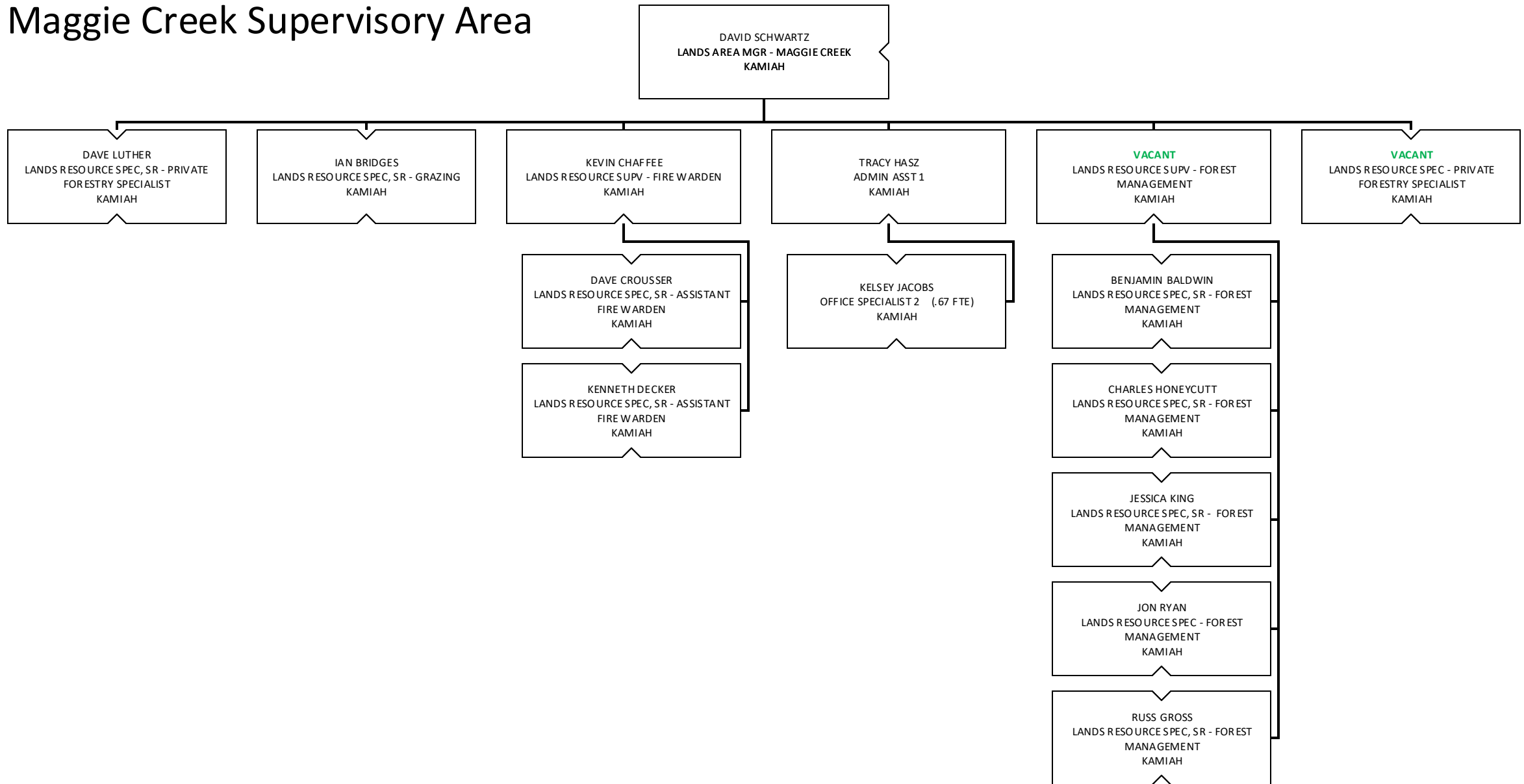
St. Joe Supervisory Area



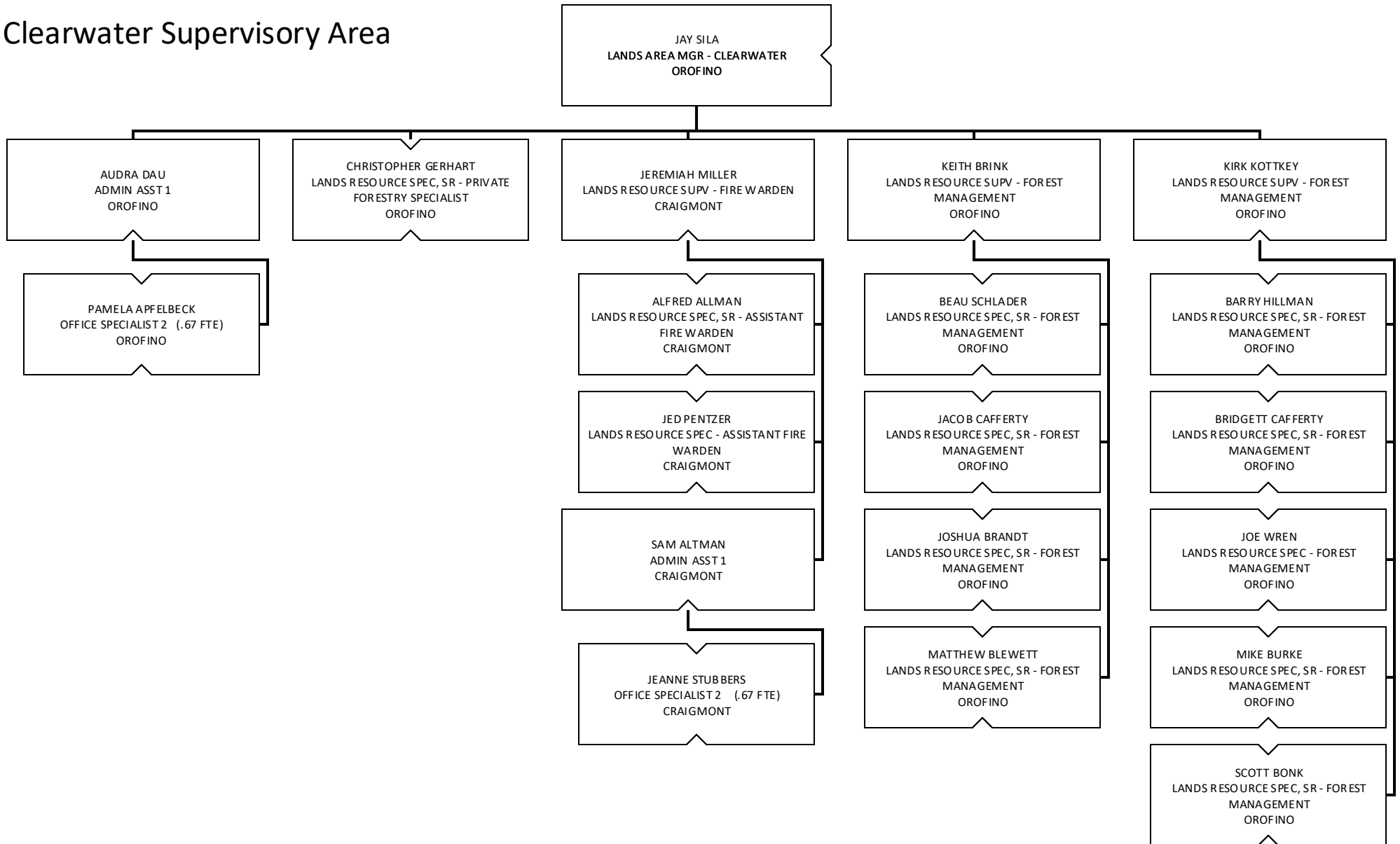
Ponderosa Supervisory Area



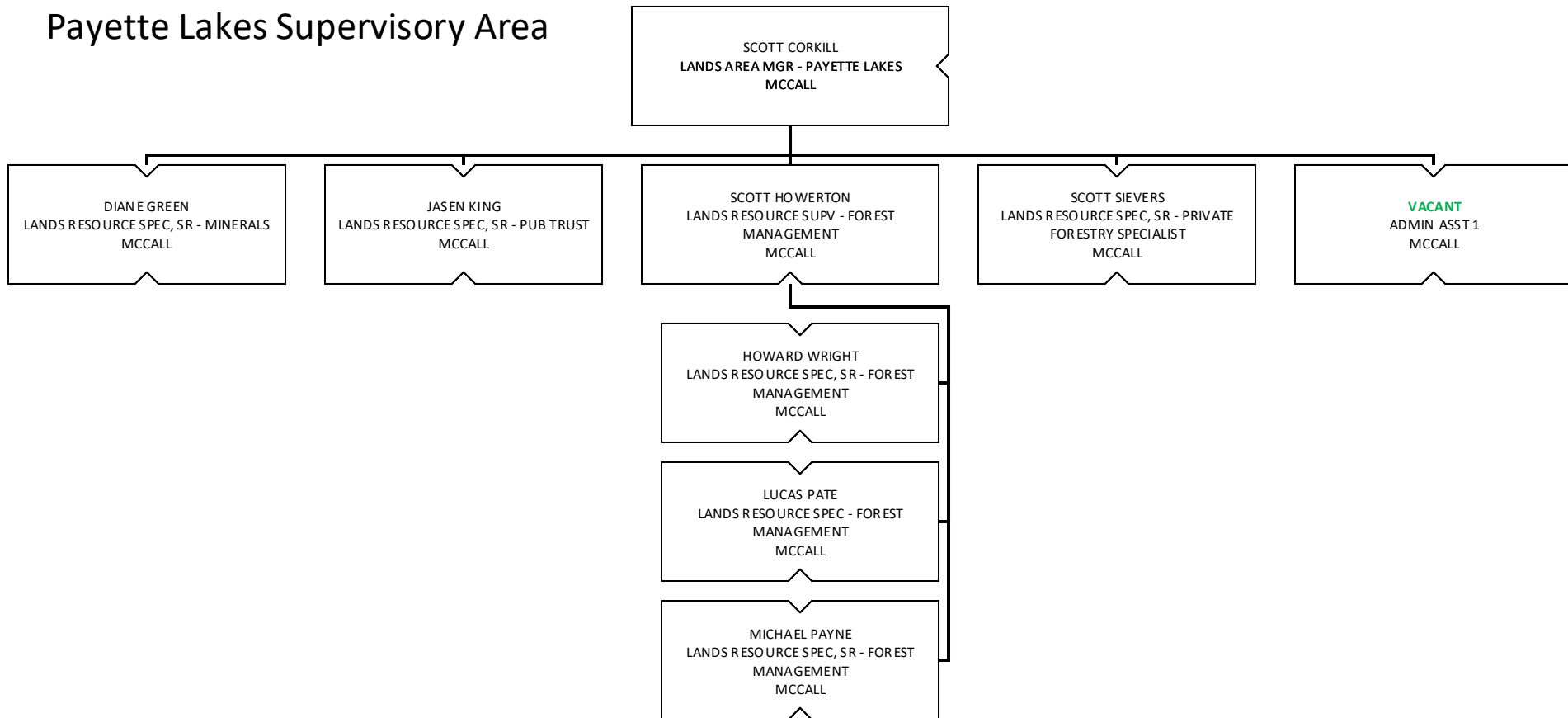
Maggie Creek Supervisory Area



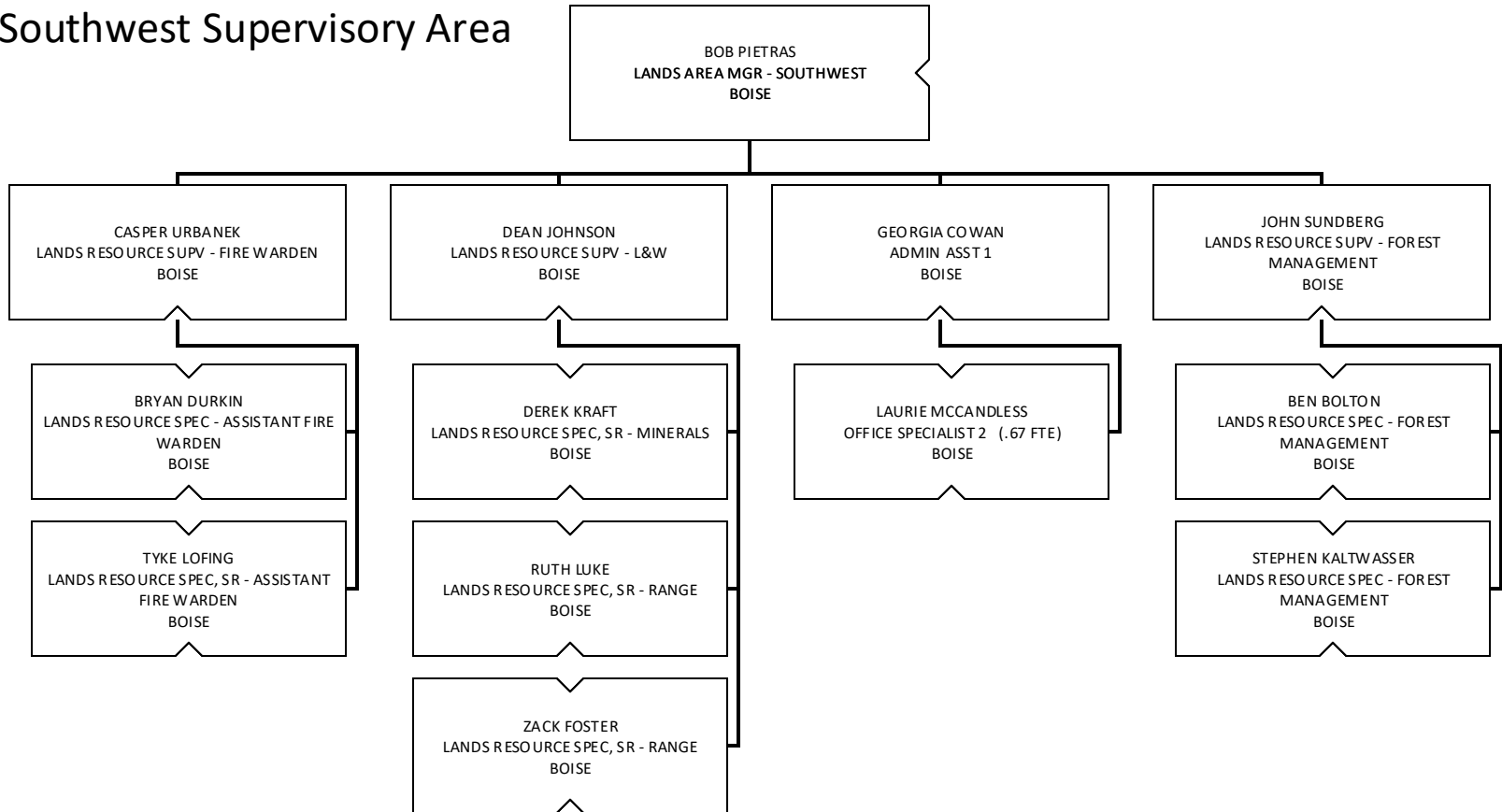
Clearwater Supervisory Area



Payette Lakes Supervisory Area



Southwest Supervisory Area



Eastern Supervisory Area

