



FUNDING OPPORTUNITIES REFERENCE GUIDE



THINK OUTSIDE THE BOX

DEVELOPED BY THE IDAHO DEPARTMENT OF LANDS
FORESTRY ASSISTANCE BUREAU - JANUARY 2021

Context

The Idaho Department of Lands proactively supports partners and cooperators in their efforts to seek grant and funding opportunities that enhance conservation and restoration activities in the State of Idaho. This guide is a compilation of various funding opportunities, both traditional and non-traditional, that are available nationwide and/or to agencies and organizations within the State of Idaho. Each funding opportunity within this guide is identified as a potential option for the Idaho Department of Lands partners and cooperators to consider when pursuing funding sources to support their projects.

The Idaho Department of Lands provides this resource as a reference only. Inclusion of information from an organization does not mean the Idaho Department of Lands endorses that organization. The Idaho Department of Lands does not guarantee availability of funding from any organizations referenced in this document. It is the sole responsibility of the applicant to validate information within as the Idaho Department of Lands does not warrant accuracy of the information.



Table of Contents

02

Context

03

Table of Contents

04

Traditional Funding Opportunities

12

Non-Traditional Funding Opportunities

13

Government-based Funding Opportunities

26

Public/Private-based Funding Opportunities

41

Forestry Assistance Bureau Grant Contacts



An Overview of Traditional Funding Sources

Since the beginning of the State and Private Forestry roll-out, the Idaho Department of Lands has utilized USDA Forest Service State and Private Forestry funding to address management needs throughout Idaho's urban and rural landscapes. The Idaho Department of Lands works to ensure federal dollars are invested in locally supported projects which address issues of national importance and provide meaningful, lasting, and measurable outcomes. The following six pages outline the basic concepts of the Idaho Department of Lands' traditional, federal-based grants. Viewers are encouraged to utilize the hyperlinks at the bottom of each page to further investigate the specific opportunity and what the entity has to offer.



Arbor Day Grant



\$300

The Idaho Department of Lands, Arbor Day Grant program provides essential funding for the purchase of trees and shrubs for Arbor Day celebrations, fostering a stronger relationship between Idaho communities and the green and utility industries. This program is sponsored by Avista, Rocky Mountain Power, and Idaho Power's contributions to the Community Tree Trust Account, making the "Planting Idaho" program possible. **Idaho Cities, Counties, and Tribes are eligible to apply.** An Arbor Day Proclamation signed by an elected government official is required.

The Idaho Nursery and Landscape Association (INLA) administers the program for IDL. Applications are submitted to INLA including the signed Proclamation and are typically due by the 3rd week in March, annually. Awarding of this grant is limited to two consecutive years. After receiving grant funds two years in a row, an applicant must wait one year before applying for another Arbor Day grant.



Arbor Day Grant recipients are selected via a lottery-like system. A 25% match is required. Plant materials must be purchased from an Idaho State nursery and Floral License holder. The Arbor Day Grant is a reimbursement grant. Therefore, after holding the Arbor Day celebration, an accomplishment report and copies of paid invoices for plant materials, with check numbers, must be submitted to receive reimbursement.

Community Forest Program Grant

This competitive grant program supports the establishment of beneficial community forests. Some of those benefits the program strives to achieve include economic benefits through active forest management, clean water, wildlife habitat, educational opportunities, and public access for recreation. Currently, Pine Street Woods (A Kaniksu Land Trust Project) is the only Idaho-based project funded by this program. This project, spanning 160 acres, was awarded \$400,000.



\$0 - \$600,000

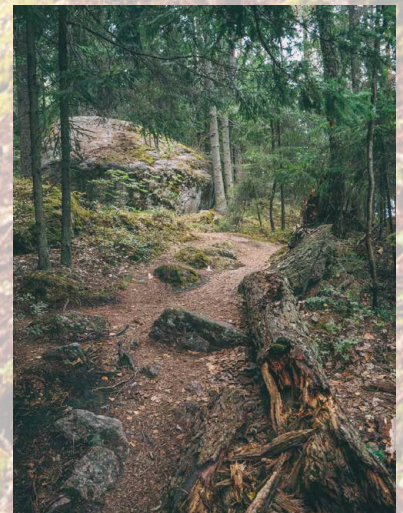


What are the eligibility requirements?

- Privately owned forest land (75% forested)
- Land threatened by conversion to non-forest use
- Project provides defined community benefits
 - Five-acre minimum
- **Local governments, tribal governments and qualified non-profit entities are eligible**

Additional program requirements:

- Full fee title acquisition is required; conservation easements are not eligible
 - 50% non-federal match is required
 - Public access is required
- A Community Forest Plan is required



Source: <https://www.fs.usda.gov/managing-land/private-land/community-forest>

Forest Legacy Program Grants



\$0 - \$20,000,000

The Idaho Forest Legacy Program (FLP) was established to protect environmentally and economically important forest areas threatened by conversion to non-forest uses. The program focuses on promoting forestland protection and other conservation opportunities while keeping the land in private ownership. The program provides federal Land & Water Conservation funds, allocated to Idaho through the USDA Forest Service, to purchase conservation easements on private lands that may otherwise be developed and lost as forests. Applications are due annually by the end of May.

A Legacy conservation easement (CE) is a legal agreement between the landowner and the State of Idaho. When a landowner is granted a CE, the result is a restriction on subdivision and development rights associated with the land. The restriction is perpetual and binding on all future owners and the State is required to monitor regularly for compliance. CE's are site-specific documents that help landowners ensure important natural values are protected forever, while keeping the property in private ownership and use.



- Projects must meet one or more of the following criteria:
- Meet one or more of Idaho's FLP Goals
 - Project must be within a Priority Landscape Area as found in the Idaho Forest Action Plan
 - Project must be sponsored by a state agency or land trust organization
 - **Project must be privately owned - private landowners are the only eligible applicants**
 - Five-acre minimum
 - Must include minimum 25% non-federal match
 - Must be a minimum of 75% forestland

Source: <https://www.idl.idaho.gov/forestry/forest-legacy-program/>

The Landscape Scale Restoration (LSR) Grant

Projects funded through the LSR competitive process should include a focus on priority landscape areas as found in the Idaho Forest Action Plan (or equivalent state-wide restoration strategy) and should encourage the use of innovative cross-boundary approaches. "Cross-boundary" is meant to be defined broadly. Innovative projects should integrate State and Private Forestry (S&PF) programs and cross a combination of ownerships and management boundaries. However, LSR funds cannot be expended on any form of federal land.



\$0 - \$240,000



Projects must focus on rural lands, specifically nonindustrial private lands or State lands. For the purposes of this program, rural means any area other than an urbanized area such as a city or town with a population greater than 50,000 inhabitants. **Eligible applicants include state/local/tribal governments, universities and 501(c)3 organizations.**

One recent project example that scored very high competitively is the Clearwater Basin Seed Orchard Project. This project creates an 80-acre irrigated conifer tree orchard that will produce roughly 600 pounds of seed annually resulting in more than 10 million seedlings per year for reforestation efforts.



Source: <https://www.idl.idaho.gov/fire-management/forestry-fire-grants/>

The Rural Fire Capacity Grant



\$0 - \$10,000

The Rural Fire Capacity grant, formally known as the Volunteer Fire Assistance (VFA) grant, is a cooperative program between the Idaho Department of Lands and the USDA Forest Service State and Private Forestry, under the authority of the Cooperative Forestry Assistance Act of 1978, Public Law 95-313, as amended. **Eligible applicants include Fire Service Organizations (FSO) and Rural Fire Protection Agencies (RFPA).**

Funding for this grant is allocated to the State based, in part, on the number of fires reported in the national database. Therefore, fire districts failing to report information to the State Fire Marshal will not be considered for funding. Considering anticipated funding levels, it is highly likely that FSOs/RFPAs comprised of less than 80% of volunteers will NOT receive funding. The FSO/RFPA must have a service area that includes a rural area, or community, that does not exceed 10,000 in population. Grant funding requires a 10% match of total funds requested.



Grant funding is dedicated and scoped year-to-year based on current issues. Funding is granted under the following five categories:

- Funding for establishment of New Departments
- Training (must clearly describe the need)
 - Personal Protective Equipment
 - Communications
- Equipment (less than \$5,000)

Western States Fire Managers (Wildland Urban Interface) Grants

The Western States Fire Managers (WSFM) grant provides funds to mitigate risk from wildland fire within the Wildland Urban Interface (WUI) with emphasis on hazard fuel reduction, information/education, assessment/planning, and project monitoring through community/landowner actions. Projects must adhere to a specific set of criteria and must be included in the respective Community Wildfire Protection Plan (CWPP). **Eligible applicants include state/local/tribal governments, and 501(c)3 organizations.**



\$0 - \$240,000



A 1:1 match of funds is required for the WSFM grant (applicants are required to supply a minimum of 10% match). There is no adjacency requirement (the project does not have to be adjacent to a federal project). In the state of Idaho, these grants are scored, ranked, and funded on a competitive basis in the Western United States.

Examples (not all inclusive) of qualifying projects:

- Defensible space around homes and structures
 - Shaded fuel breaks
- Fuels reduction beyond defensible space adjacent to WUI areas
 - Removal of slash including piling and burning; mulching; grinding; etc.
 - Prescribed fire
 - Thinning
- Maintenance of non-federally funded fuels projects
- Monitoring components of projects for effectiveness
 - Education
 - CWPP development



Source: <https://www.idl.idaho.gov/fire-management/forestry-fire-grants/>

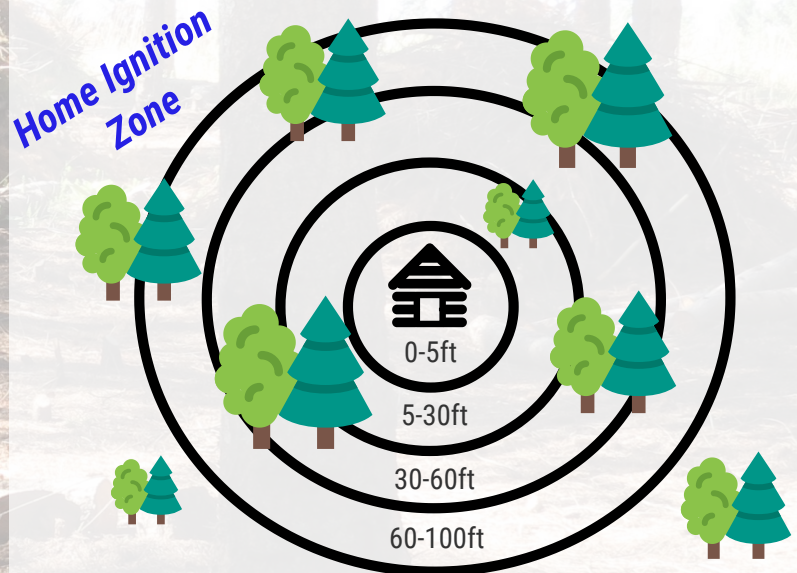
Hazard Fuels Reduction (HFR) Grant



\$0 - \$240,000

The Hazard Fuels Reduction (HFR) grant follows the basic principles of, and is primarily guided by, the aforementioned WSFM grant with a couple of differences in eligibility criteria. Like the WSFM grant, projects must be included in a respective CWPP. However, HFR does not currently have a match/leverage requirement, although it is always encouraged. **Eligible applicants include state/local/tribal governments, and 501(c)3 organizations.**

Unlike the WSFM grant, HFR funded projects must be adjacent to federal lands with the goal of complementing and aligning with that federal agency's objectives. The federal project must have been completed within the previous three years or initiated in the next three years.



Funding from the HFR grant cannot be used to support general education which is a distinguishing factor between the two grants. For this reason, many cooperators choose to apply for the WSFM grant. The only allowable educational component that the HFR grant authorizes funding for is project specific education, i.e. direct participant education.

Source: <https://www.idl.idaho.gov/fire-management/forestry-fire-grants/>

An Overview of Non-Traditional Funding Sources

It is important to have reliable funding sources which help to provide a stable future for programs the Idaho Department of Lands supports. The funding sources found within the next section of this guide could be used to supplement “traditional” funding sources or be used as stand-alone grants. In recognition that traditional funding streams may not be the right fit for a cooperator’s needs, the Idaho Department of Lands has searched the web and reached out to contacts to garner additional information about funding sources, all of which have been included within this guide.

The Idaho Department of Lands encourages organizations to review the following opportunities to consider benefit from and eligibility for one or more of the funding sources. At the bottom of each page you will find the source of the information in the form of a hyperlink that can be used to further understand what each entity has to offer.



FEMA BRIC Grants

(Administered by the Idaho Office of Emergency Management)



\$\$\$ Varies

The Building Resilient Infrastructure and Communities (BRIC) program is a new program with the first request for applications having been rolled out in the Fall of 2020. The program superseded the Pre-Disaster Mitigation program with a vision of reducing risk through mitigative efforts rather than reactive disaster spending.

Eligible applicants include: States, Territories, Tribes, and local governments.

Current BRIC priorities include:

- incentivize public infrastructure projects;
- incentivize projects that mitigate risk to one or more lifelines;
- incentivize projects that incorporate nature-based solutions; and,
- incentivize adoption and enforcement of modern building codes.



The BRIC program is guided by the following principles:

- Support communities through capability and capacity building
- Encourage and enable innovation
 - Promote partnerships
 - Enable large projects
 - Maintain flexibility
 - Provide consistency

Source: <https://www.fema.gov/bric>

FEMA Fire Prevention & Safety Grants

(Administered by the Idaho Office of Emergency Management)

The Federal Emergency Management Agency dedicates funds to the Fire Prevention & Safety grant program in an effort to accomplish one of the Department of Homeland Security's (DHS) focal points: assisting fire prevention programs and supporting firefighter health and safety research and development. This grant program aligns with the 2018 DHS Quadrennial Homeland Security Review mission to Strengthen National Preparedness and Resilience.



\$0 - \$1,500,000



Fire Prevention and Safety Activity (FP&S) -
The five project categories eligible for funding are:

- Community Risk Reduction
- Wildfire Risk Reduction
- Code Enforcement/Awareness
- Fire & Arson Investigation
- National/State/Regional Programs and Studies

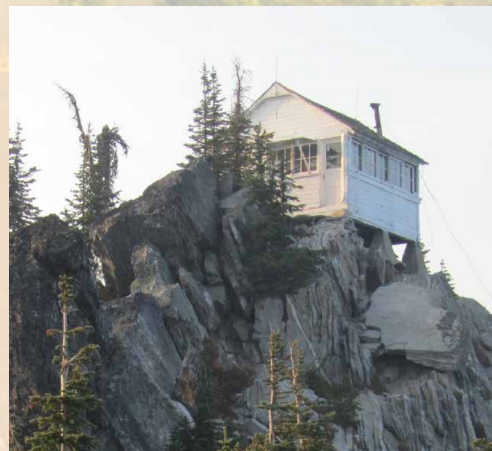
Eligible applicants include
fire departments and national, regional, state, local, tribal,
and public/private nonprofit organizations.

Firefighter Safety Research and Development Activity -

The six project categories eligible for funding are:

- Clinical Studies
- Technology and Product Development
- Database System Development
- Dissemination and Implementation Research
- Preliminary Studies
- Early Career Investigator

Eligible applicants include national, state, local, federally
recognized tribal, and public/private non-profit
organizations.



USDI BLM Community Fire Assistance Grant

(Administered by the USDI Bureau of Land Management)



\$0 - \$300,000

The National Fire Plan - Wildland Urban Interface Community Fire Assistance grant aims to help reduce the risk of catastrophic wildfires in communities. Guided by principles outlined in the National Cohesive Wildland Fire Management Strategy, **this grant provides assistance to State, Local, County, District, and 501(c)3 organizations** enabling them to carryout specific wildfire risk mitigation activities.

Allowable activities include:

- Implementation of community programs that develop and enhance local capability in the areas of risk assessment and planning, training, mitigation activities, and community and homeowner education and action
- Planning and implementation of fuels management reduction activities
- Enhancement of local and small business employment opportunities for rural communities
- Education and training for rural fire districts



A specific type of project that these funds have historically provided funding for is the development and updating of Community Wildfire Protection Plans (CWPPs). Projects that include a cost-share or service in-kind contribution will have priority for selection.



USBR Cooperative Watershed Mgmt Program

(Administered by the U.S. Bureau of Reclamation)

Through the Cooperative Watershed Management Program (CWMP), Reclamation **provides funding to watershed groups** to encourage diverse stakeholders to form local solutions to address their water management needs. By providing this funding, Reclamation promotes water reliability and cooperation between stakeholders to reduce conflict, facilitate solutions to complex water issues, and stretch limited water supplies.



\$0 - \$100,000



Funding is typically provided in stages year-after-year. For instance, FY 2018 funding was directed to phase I of a project and FY 2019 funding was directed to phase II of the same project.

The CWMP provides funding on a competitive basis for two types of activities:

- Watershed Group Development and Watershed Restoration Planning: For Phase I projects, Reclamation will award a successful applicant up to \$50,000 per year for a period of up to two years with no non-Federal cost-share required
- Implementation of Watershed Management Projects: Will award up to \$100,000 per project over a two-year period. For Phase II projects, applicants must contribute at least 50% of the total project costs



Source: <https://www.usbr.gov/watersmart/cwmp/>

USDA Agricultural Conservation Easement Program

(Administered by the Natural Resources Conservation Service)



\$\$\$ Varies

The Agricultural Conservation Easement Program (ACEP), much like the Forest Legacy Program, works to ensure that specific lands are protected from conversion to another use.

This program has two components: the Agricultural Conservation Easement - prevents agricultural working lands from being converted to non-agricultural for other uses, and the Wetland Reserve Easement - restores, protects, and enhances enrolled easements.

Agricultural Conservation Easement eligible lands include: cropland, rangeland, grassland, pastureland and nonindustrial private forest land.

Wetland Reserve Easement eligible lands include: farmed or converted wetland



This program can provide a certain percentage of the fair market value costs to purchase a conservation easement, dependent on specific criteria. Eligible partners for the Agricultural Conservation Easement component include **American Indian tribes, state and local governments and non-governmental organizations** that have farmland, rangeland or grassland protection programs. For the Wetlands Reserve Easement component, only **private landowners and Indian tribes** are considered eligible.

USDA Conservation Innovation Grant

(Administered by the Natural Resources Conservation Service)

The USDA NRCS Conservation Innovation Grant (CIG) program provides funding primarily for research-based projects focused on pursuing innovative conservation efforts, ultimately improving water quality, soil health, and wildlife habitats. This program is managed at the state and national level unlike most other NRCS administered grants which fall at the regional and field office levels. All questions regarding this grant should be directed to the Idaho State NRCS office.



The CIG program provides funding for the following activities: development and field testing, on-farm research and demonstration, evaluation, and implementation.

These activities must lead to the following:

- Approaches to incentivizing conservation adoption, including market-based and conservation finance approaches
- Conservation technologies, practices, and systems.

Eligible applicants primarily include universities as well as small research based organizations. However, all non-federal entities and individuals are eligible to apply. All CIG projects must involve Environmental Quality Incentive Program, EQIP-eligible producers. This program requires a 1:1 match of funds.



USDA Conservation Stewardship Program

(Administered by the Natural Resources Conservation Service)



Minimum of
\$1500

The NRCS has numerous conservation-based programs/grants, one of which is the Conservation Stewardship Program (CSP). Through technical and financial assistance, this 5-year program serves as a building block for sustaining landowner conservation efforts. This program is specifically geared towards those who have previously engaged in conservation efforts and wish to expand their conservation-based activities. **Eligible applicants are limited to non-federal landowners.**

Activities carried out in this program include but are not limited to improving grazing conditions, increasing crop yields, and developing wildlife habitat. Local NRCS field-offices manage all CSP programs. Awards are provided via a contract with an annual payment of at least \$1,500 depending on a variety of factors.



Eligible lands include:

- Cropland
- Hayland
- Pastureland
- Rangeland
- Non-industrial private forest lands
- Agricultural land under the jurisdiction of an Indian tribe

USDA Environmental Quality Incentives Program

(Administered by the Natural Resources Conservation Service)

The Environmental Quality Incentives Program (EQIP) provides financial and technical assistance to non-federal landowners in an effort to help meet environmental regulations as well as implement conservation practices. This program's policies also apply to many other programs the NRCS offers. Additionally, applicants must provide proof of one of the following plans: IDL Forest Stewardship Plan, an Idaho Tree Farm Plan, or an equivalent forest management plan. An EQIP plan of operations will also be required if accepted for funding.



- Eligible applicants include:**
- Agricultural producers
 - Owners of non-industrial private forestland
 - Indian tribes
 - Those with an interest in agricultural or forestry operations

EQIP eligible land types include croplands, rangelands, pasturelands, non-industrial private forestlands, and other farm or ranch lands. Examples of project activities and/or practices include but are not limited to cover crops, forest stand improvement, prescribed grazing, and irrigation. Typically, applications are received annually in the fall, ranked by the following spring, and awarded for work to begin by the summer.



USDA Regional Conservation Partnership Program

(Administered by the Natural Resources Conservation Service)



\$\$\$ Varies

The Regional Conservation Partnership Program (RCPP) under the 2018 Farm Bill is a standalone program which sees approximately \$300 million annually at the national level. Utilizing EQIP policy, this program supports conservation-based activities that foster extensive partnerships seeking to address natural resource concerns.

Awards are prioritized for applicants that bring forward an extensive list of partnering agencies as well as the ability for the involved agencies to contribute to matching funds.

Potential activities include:

- Land management/land improvement/restoration practices
- Land rentals
- Entity-held easements
- United States-held easements
- Public works/watersheds.



The RCPP has two funding pools to which applicants may apply to: the Critical Conservation Area (CCA) pool or the State/Multi-state pool.

The RCPP eligible organizations are specific partners who fall within the following categories:

- Non-Government Organizations
- Conservation Districts
- State Agencies

USEPA Brownfields Grants

(Administered by the Center for Creative Land Recycling)

The U.S. Environmental Protection Agency (EPA) in collaboration with the Center for Creative Land Recycling manages the Brownfields program which provides various grant opportunities that lend to a wide variety of activities all surrounding the concept of revitalizing brownfields properties. The program is designed to empower states, communities, and other stakeholders in economic redevelopment to work together in a timely manner to prevent, assess, safely clean up, and sustainably reuse brownfields.



\$0 - \$200,000

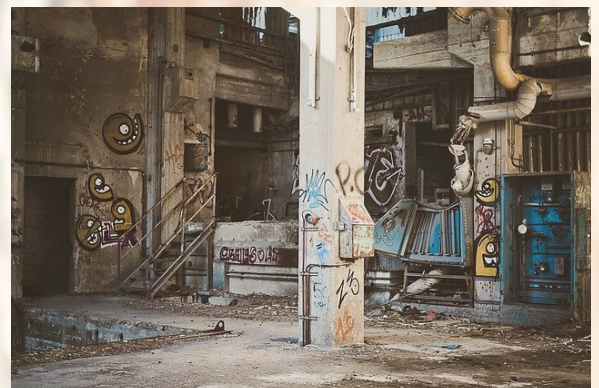


What is a Brownfield?

A brownfield is a property, the expansion, redevelopment, or reuse of which may be complicated by the presence or potential presence of a hazardous substance, pollutant, or contaminant. Funding is directed to specific areas, such as a neighborhood, downtown district, local commercial corridor, or city block, affected by a single large or multiple brownfield sites.

Organizational eligibility varies between grant subcategories. **For a full list of eligible applicants, visit <https://www.epa.gov/brownfields/entities-eligible-receive-brownfield-grants>.**

Funding is usually available every 1-2 years, with various deadlines depending on which specific grant is applied for. Contact region specific EPA staff for further information.



Source: <https://www.epa.gov/brownfields/overview-epas-brownfields-program>

USEPA Non-point Source Mgmt §319 Grant

(Administered by the Idaho Department of Environmental Quality)

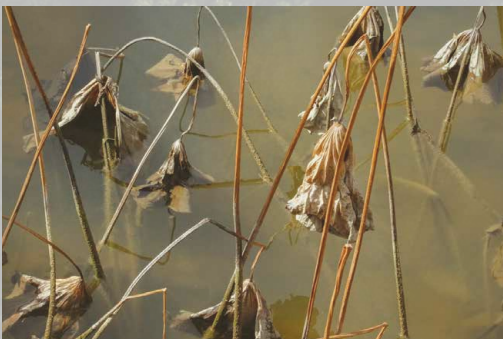
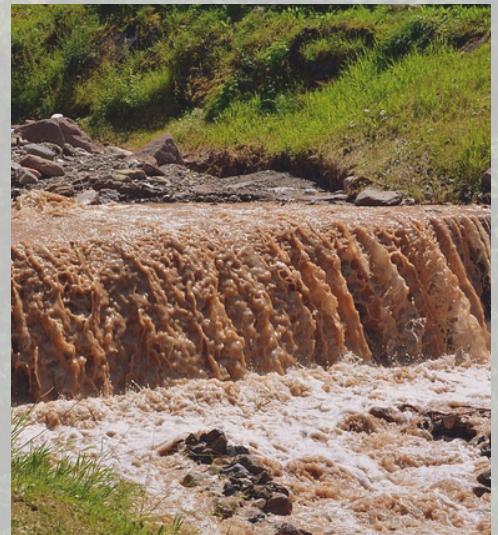


\$0 - \$250,000

Section 319 of the Clean Water Act established a grant program under which states, territories, and tribes may receive funds to support a wide variety of non-point source pollution management activities, including technical assistance, financial assistance, education, training, technology transfer, demonstration projects, and monitoring to assess the success of specific non-point source implementation projects. **There are no applicant eligibility limitations.** However, a 40% non-federal match of funds is required.

Eligible non-point source management and prevention activities include (exceptions may apply):

- Agriculture
- Urban Storm water Runoff
- Transportation
- Silvicultural or Forestry-related Activities
- Mining
- Ground Water Activities (to the extent identified by the state's NPS management program, including source water protection efforts that involve regional collaboration or have statewide application)
- Hydro-logic and Habitat Modification and Related Activities (including wetlands reconstruction)



Regional offices and representatives are located in Boise, Coeur d'Alene, Idaho Falls, Lewiston, Pocatello, and Twin Falls. Two satellite offices are located in Kellogg and Grangeville. DEQ staff in regional and satellite offices are the service providers of the agency meaning all questions and project work will be coordinated through these offices.

Source: <https://www.deq.idaho.gov/water-quality/grants-and-loans/nonpoint-source-subgrants-in-idaho/>

USDoD Readiness and Environmental Protection Integration Program

(Administered by the U.S. Endowment for Forestry and Communities)

The United States Department of Defense (DoD) Readiness and Environmental Protection Integration (REPI) Program was established in 2003 with the intent of maintaining compatible land uses around DoD installations and ranges in support of military readiness through cost-sharing partnerships. Although the central mission of REPI remains the same, the focus of the program varies with each funding year.



Eligible applicants include state governments, political subdivisions of a state, or private entities whose organizational purpose or goal is conservation, restoration or preservation of land and natural resources.

Coordination with a local military installation is key to the acceptance of a project pre-proposal. Project criteria include but are not limited to the protection of large land parcels, 1:1 match funds with priority given to greater ratios, multiple and diverse partnerships, depth of project coordination focused on delivery of initiatives at varying levels of government, and land protection or conservation program leverage. The projects ability to support key military capabilities and readiness needs to be clear.



Source: <https://www.repi.mil/Buffer-Projects/REPI-Challenge/>

USFWS Habitat Improvement Program

(Administered by the Idaho Department of Fish and Game)



\$0 - \$10,000

The intent of the Idaho Department of Fish and Game's Habitat Improvement Program is to provide **private and public landowners/land managers** with funding and technical assistance for the enhancement of both upland game and waterfowl habitats. Questions should be directed to region-specific Habitat Biologists.

Upland Game Habitat Eligible Projects:

- Establish areas of grasses and legumes for nesting cover
- Fencing livestock from woody areas to provide critical winter cover
- Planting farmstead and field windbreaks to provide cover
- Planting winter food plots near existing nesting/winter cover



Waterfowl Habitat Eligible Projects:

- Planting grasses and legumes for nesting cover
- Managing livestock use of existing cover
- Providing open water spaces in vegetation-choked marshes
 - Creating new wetlands
 - Restoring drained wetlands

The Acorn Foundation

Established in 1978, the Acorn Foundation is a family foundation dedicated to supporting community-based organizations working to advance environmental conservation, sustainability and environmental justice. The Foundation offers general support grants to grassroots organizations through an open Letter of Inquiry (LOI) process. Full proposals are accepted by invitation only.



\$5,000 - \$10,000



The Foundation is particularly interested in small and innovative community-based projects that engage in community organizing in order to:

- Advocate for environmental health and justice, particularly in low-income communities, communities of color and indigenous communities
- Preserve and restore habitats supporting biological diversity and wildlife
- Prevent or remedy toxic pollution

The first step in submitting a letter of inquiry is to thoroughly review the eligibility criteria and grant-making guidelines in order to ensure an organization is a good fit for the Acorn grant program. Organizations meeting eligibility and funding criteria are encouraged to submit the letter of inquiry form. Due to limited funding, even if the project fits within the guidelines, the Foundation is only able to invite full proposals from approximately 10% of the organizations that apply.



Source: <https://www.commoncounsel.org/296-2/>

Acres for America

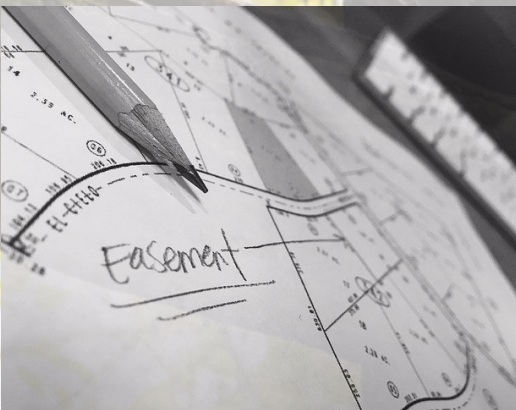
National Fish and Wildlife Foundation



\$0 - \$3,000,000

Acres for America partnered with Walmart in 2005 to create a program that stands today as one of the most important public-private land conservation partnerships in the United States. The partnership was created to establish groundbreaking efforts to support and catalyze the conservation of lands and wildlife habitat of national significance, and to benefit local communities and local economies.

Although approximately \$3 million dollars was made available to support projects in 2020, these funds are distributed nationwide and the partnership expects to fund anywhere between four and eight projects, all requiring a 1:1 match which CAN include other federal funds.



Acres for America provides grant funds for land acquisition, easement purchase, and public access projects. Please note that the funds from this program may only be applied to the land's purchase price. **Eligible applicants include non-profit 501(c)3 organizations, state government agencies, local governments, municipal governments, Indian tribes, and educational institutions.**

Source: <https://www.nfwf.org/programs/acres-america>

Bring Back the Natives

National Fish and Wildlife Foundation

Bring Back the Natives invests in conservation activities that restore, protect and enhance native populations of sensitive or listed fish species across the United States. The program emphasizes coordination between private landowners and federal agencies, tribes, corporations and states to improve the ecosystem functions and health of watersheds. **Eligible applicants include: local, state, federal, and tribal governments/agencies, special districts, non-profit organizations, schools and universities.**



\$0 - \$25,000



Bring Back the Natives supports projects benefiting one or more of the following native fish species and focal geographies (Idaho specific details):

- Pacific lamprey, Chinook salmon and Steelhead in the Columbia River Basin
- Inter-mountain West native trout and char including Yellowstone/Snake River, Colorado River, San Juan and Greenback Cutthroat trout, as well as Bull trout, Apache trout and Gila trout

Project Example (2018): Comprehensive Watershed Restoration and Stream Re-connection in the Clearwater and Grande Ronde Watersheds (ID, OR) - Grantee: Trout Unlimited

Grant Award: \$58,500

Matching Funds: \$60,000

Total Amount: \$118,500

Restored habitat and stream connectivity projects in two Snake River watersheds through a combination of Aquatic Organism Passage restoration, wood installation and floodplain reconnection projects. The project restored natural hydrologic processes and increased resiliency for populations of trout, salmon, pacific lamprey and other native fish species. The project improved access to over 8 miles of habitat, restored water quality and habitat, and increased spawning success.

Source: <https://www.nfwf.org/programs/bring-back-natives?activeTab=tab-1>

Five Star and Urban Waters Restoration Grant Program

National Fish and Wildlife Foundation



\$20,000 -
\$50,000

This stewardship based nationwide program was developed to provide funding for projects on public accessible lands (public land or private land with public access). This program requires projects that incorporate a minimum of 5 partners, hence the "Five Star" program title. Community engagement and measurable outcomes are the key to a successful application and project. **Eligible applicants include non-profit 501(c) organizations, local/municipal governments, tribes and educational institutions.**

Program priorities for On-the-Ground Restoration:

- Restore and/or create wetlands or riparian areas
- Address key species and habitats
- Projects that are directly tied to previously established watershed/conservation plans
- Green infrastructure design/implementation
- Collection/analyzation of local water samples
- Development/implementation of trash/litter prevention programs



Program priorities for Environmental Outreach, Education and Training:

- Integration of meaningful outreach, education and/or training that engages the public in conservation experiences in public areas
- Establishment/advancement of citizen science or water quality monitoring programs.
- Improving citizen understanding of trash/litter impacts

Source: <https://www.nfwf.org/programs/five-star-and-urban-waters-restoration-grant-program/five-star-and-urban-waters>

Western Big Game Migration Program Grant National Fish and Wildlife Foundation

The Improving Habitat Quality in Western Big Game and Migration Corridors program grant is devoted to conserving critical winter range and migration corridors for various big game species including but not limited to pronghorn, elk and mule deer. The program is driven by partnerships between the NFWF and the U.S. Department of Interior's Bureau of Land Management, the U.S. Fish and Wildlife Service's Partners for Fish and Wildlife Program, the USDA's Natural Resources Conservation Service, and ConocoPhillips.



\$100 - \$300,000



Eligible applicants include: non-profit 501(c) organizations, U.S. Federal government agencies, state government agencies, local governments, municipal governments, Tribal governments and organizations, and Educational institutions.

The Idaho Department of Fish and Game's (IDFG) Movement and Migration Program is the point of contact for Idaho based project proposals. All proposals must align with conservation targets identified in the IDFG State Wildlife Action Plan (SWAP). Projects must be 1 to 3 years in duration. Due to the match requirements for this program, IDFG actively seeks partnership opportunities that have the potential to leverage various sources of funding.



Source: <https://www.nfwf.org/programs/rocky-mountain-rangelands/improving-habitat-quality-western-big-game-winter-range-and-migration-corridors?activeTab=tab-1>

The Charlotte Martin Foundation Wildlife and Habitat Program



\$0 - \$25,000

The foundation focuses on conservation efforts that utilize the impacts of climate change when selecting areas for protection. Through engaging a community of citizens, scientists, and conservationists, the Charlotte Martin Foundation supports projects that include the education of the public about biodiversity and climate change.

Projects must focus on restoring important lands for biodiversity, focal species, and landscape connectivity. **The Foundation primarily considers eligible applicants as small, rural organizations.**

Projects might include but are not limited to:

- Assessments to identify species and communities at risk, including strategies to work toward ecosystem resilience
- Identification of barriers to migration and mitigation measures to enhance landscape connectivity
- Adaptive restoration strategies based on predicted species range expansion and contraction
- Promoting the biodiversity of the marine and freshwater environments



What the foundation does not support:

- Organizations whose mission statement does not include wildlife and habitat preservation
 - Preserving of small isolated parcels of land
- Preservation of land solely valued for recreational purposes
 - Projects primarily in urban areas
 - Wildlife rehabilitation



Coalitions and Collaboratives, Inc.

AIM Program Grant

The Coalitions and Collaboratives (COCO), Inc. Action, Implementation and Mitigation (AIM) Program grant provides funding twice a year to organizations nationwide for various capacity building activities falling under the overarching goal of protecting and restoring natural resources and communities. Personnel costs, planning efforts and wildfire risk reduction work are a few examples of eligible expenditures/activities that can be implemented over the course of the 1-year contract.



\$10,000 -
\$75,000



Eligible organizations include: Conservation Districts, Regional and local collaborative efforts, Fire Safe Councils and/or Wildfire Councils, Non-profit groups that promote hazardous forest fuel reduction treatment projects in partnership with local, state or private entities, Fire departments, Tribes, and City or county government. A nonprofit (501c3) status is required or the organization must have a fiscal sponsor that meets eligibility criteria.

This funding opportunity requires 100% matching funds and is provided on a reimbursement basis only. Additional eligibility requirements can be found at the link below.



Source: <https://co-co.org/get-involved/grants/aim-grant/>

The Conservation Alliance

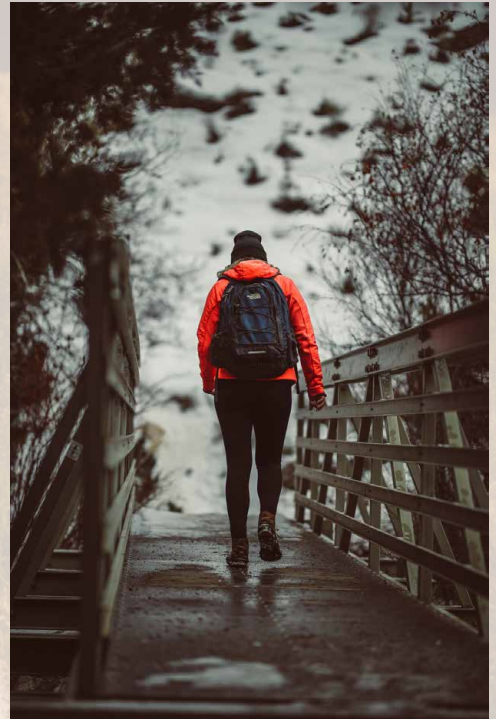


\$0 - \$50,000

The Conservation Alliance is a collaborative effort driven by outdoor industries looking to conserve North American habitats and recreational lands. **Funding is devoted to registered 501(c)3 organizations** whose mission is driven by the desire to protect wild lands and waterways utilized by the public in an effort to ensure the longevity of their use.

Project criteria and objectives:

- The project should seek to secure lasting and quantifiable protection of a specific wild land or waterway. Landscape-scale projects that have a clear benefit for habitat are a priority.
- The campaign should engage grassroots citizen action in support of the conservation effort. General education, restoration, stewardship, or scientific research projects will not be funded.
- All projects must have a clear recreational benefit.
- The project timelines should not exceed/should be successful within a period of 4 years.



Before applying for funding, an organization must first be nominated by one of the Alliance's member companies. Idaho based members include the NRS in Moscow, ID, and Woods Wheatcroft Photography in Sandpoint, ID.

Firehouse Subs Public Safety Foundation

The Firehouse Subs Public Safety Foundation is dedicated to positively impacting lifesaving capabilities through various funding areas. **Fire Departments, Law enforcement, EMS, public safety organizations, non-profits and schools** are encouraged to apply for life saving equipment. The foundation does NOT fund reimbursements for already purchased items.



\$0 - \$50,000



- Funding areas include:
- Lifesaving Equipment
 - Prevention Education
 - Scholarships and Continued Education
 - Disaster Relief
 - Military Family Support

Generally, the foundation focuses its program awards on areas that lie within a 60-mile radius of any Firehouse Subs restaurant. In recognition of the needs of more rural locations, the foundation is open to consider applications from outside areas. The typical funding amount is between \$15,000 and \$25,000. However, grants have been awarded in amounts up to \$50,000. No match is currently required.



Source: <https://firehousesubsfoundation.org/grant-faqs/>

The FruitGuys Community Fund



\$0 - \$5,000

The FruitGuys Community Fund provides small grants to small farms and agricultural nonprofits for sustainability projects that have large impacts on the environment, local food systems, and farm diversity. Currently, applications are accepted on an annual basis. Awards are typically divided up between two funding increments; 75% of the total award given in April and the remaining 25% given in December. This program would best pair with NRCS funded projects.

Allowable projects include:

- Water Conservation
- Increasing soil health
- Strengthening natural pest control
- Enhancing pollinator habitats
- Diversifying Farm income
- Increasing productivity and yields
- Extending the growing season
- Improving low income food access



Currently the FruitGuys Fund cannot fund:

- Land purchases
- Costs associated with labor
- Projects that require a percentage of the award be used for consultants or administration
- Requests that are dependent upon receiving funding from a larger grant
- Farms that have already received a FGCF grant are not currently eligible

Source: <https://fruitguyscommunityfund.org/>

Funders' Network - Partners for Places

Partners for Places strives to help communities establish relationships between their local government organizations and local or regional place-based foundations to help achieve long-term working relationships that promote and enhance sustainability.

The program is a match-based program requiring multiple organizations to collaborate and fiscally support a project in order to be considered eligible for funding.



\$0 - \$100,000



The grant program will provide partnership investments between \$25,000 and \$75,000 for one-year projects, or \$50,000 and \$100,000 for two-year projects. Requirements for fiscal partners vary. Mini grants are also available to facilitate the building of relationships and project ideas among local governments, local foundations, and front-line community-led group(s).

The grant awarding timeline is outlined as follows:

January - Proposals are due

May - New awards are made

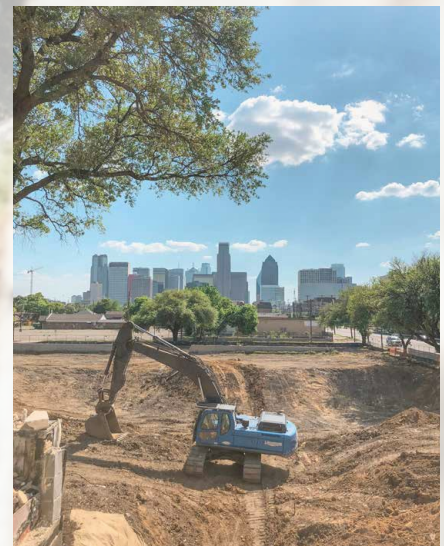
June - New RFP released

July - Proposals are due

October - Awards are made

December - New RFP released

Eligible recipients are limited to a partnering community foundation or a nonprofit with public charity 501(c)3 designation.



Source: <https://www.fundersnetwork.org/partners-for-places/>

Idaho Community Foundation Regional Grant Program



\$250 - \$5,000

The Regional Grant Program is funded through the generosity of donors who recognize that needs within communities and among nonprofits are constantly changing, and they have entrusted ICF with the flexibility to forever meet those needs. This program distributes grants of up to \$5,000 in all 44 counties for a wide variety of projects and programs through three regional cycles.

Eligible organizations include 501(c)3 nonprofit public charities and governmental entities including special taxing districts and public schools. The scope of projects that are eligible is very broad but includes conservation/environment, education, emergency services, public projects, recreation, and more.



The Regional Grants Program favors activities that:

- Reach a broad segment of the community, especially those citizens whose needs are not being met by existing services normally expected to be provided by private rather than government sources
- Request seed money to realize unusual opportunities to meet urgent needs in the community
 - Stimulate and encourage additional funding
 - Promote cooperation and avoid duplication of effort
 - Help make a charitable organization more effective, efficient, and better able to sustain itself over the long-term

National Forest Foundation Matching Awards Program

The National Forest Foundation Matching Awards Program is designed to support on-the-ground conservation and restoration projects. These projects must align with one or both of the Foundations primary focus areas: The Outdoor Experiences Program Area and/or the Forest Health Program Area. Projects must be designed to enhance forest health and/or establish/improve outdoor experiences.



\$5,000 - \$65,000



- Eligible organizations include:**
- 501(c)(3) nonprofits organizations
 - Universities
 - Native American tribes

Organizations not listed above may be considered eligible if represented by a fiscal sponsor

Education, interpretation, inventory, and monitoring are ineligible types of projects (very few exceptions).

Additional requirements must be met in order to apply.

Some of these requirements worth noting include:

- Projects must benefit National Forest and Grasslands
 - A 1:1 cash match of non-federal funds
- A letter of support from the Forest Supervisor of each National Forest or Grassland unit included in a proposal
- Permits and Compliance work completed (i.e. NEPA)



Source: <https://www.nationalforests.org/grant-programs/map>

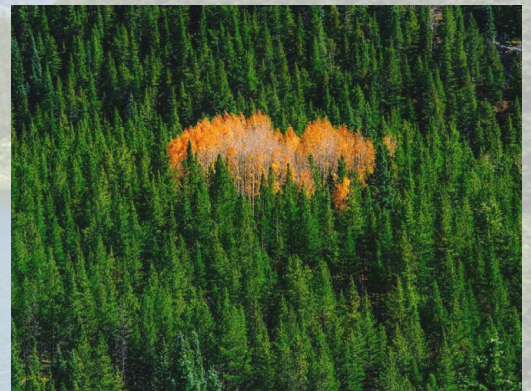
Sustainable Forestry Initiative Community and Conservation Grants Programs



\$5,000 - \$30,000

The Sustainable Forestry Initiative (SFI) strives to ensure sustainable and responsible forestry management practices through a set of standards as well as funding opportunities for practices supporting it's mission. Collaboration is SFI's priority. Currently, there are two grant opportunities which are described below. Applications for these grants are typically accepted annually.

The SFI Community Grants are awarded for collaborative community-based projects, activities, or events which support the SFI core mission to connect communities to forests. Historically, projects supported have included traditional Indigenous knowledge transfer from elders to youth, workshops to discuss forest management, educational field trips for under-served populations, and programming focused on the value of mass timber. Awards range between \$5,000 to \$10,000 per project year. **Eligible applicants include: SFI Implementation Committees; 501(c)3 organizations, colleges/universities, and Indigenous groups.**



The SFI Conservation Grant Program prioritizes funding for projects that establish important partnerships between organizations working to strengthen forest management practices. This grant prioritizes projects focusing on efforts that align with the three current SFI standards. Awards average between \$15,000 to \$30,000 per project year. **Eligible applicants include: SFI Implementation Committees (SICs), 501(c)3 organizations, colleges/universities/schools, and Indigenous groups.**

Source: <https://www.sfiprogram.org/>

The Steele-Reese Foundation

The Foundation funds projects that consider land, water, and wildlife conservation; historic preservation and restoration; and ecosystem protection, as priority activities. All conservation or environmental programs must be locally focused on rural communities or landscapes. Urban areas which will not be considered for project funding include the Boise-Nampa Metropolitan Statistical Area, Idaho Falls, Pocatello, Coeur d'Alene, Twin Falls, Lewiston, Post Falls, Rexburg, Moscow, and their suburbs.



\$5,000 - \$50,000



The Foundation considers requests from 501(c)3 organizations and from governmental entities or agencies such as schools, fire departments, and libraries.

One previously completed project was developed by the Lemhi Regional Land Trust (LRLT) for a total award of \$15,000. Funding was awarded to complete the match for \$85,000 that was previously raised by LRLT to increase staff capacity by one full time employee to develop and complete land protection projects.



Source: http://steele-reese.org/idaho_montana_grant_program

Idaho Department of Lands Grant Contacts

Tyre Holfeltz

Wildfire Risk Mitigation Program Manager

Forestry Assistance Bureau

208-666-8653 (o)

tholfeltz@idl.idaho.gov



Corrie Ivey

Grants Project Coordinator

Forestry Assistance Bureau

208-666-8669 (o)

civey@idl.idaho.gov



<https://www.idl.idaho.gov/>



2.5 Million Acres

Resource Protection

Trust **Accountability**

Idaho Department of Lands

Public Schools **Cohesiveness** Endowment

Stewardship **Service**

Non-Industrial Private Landowners

