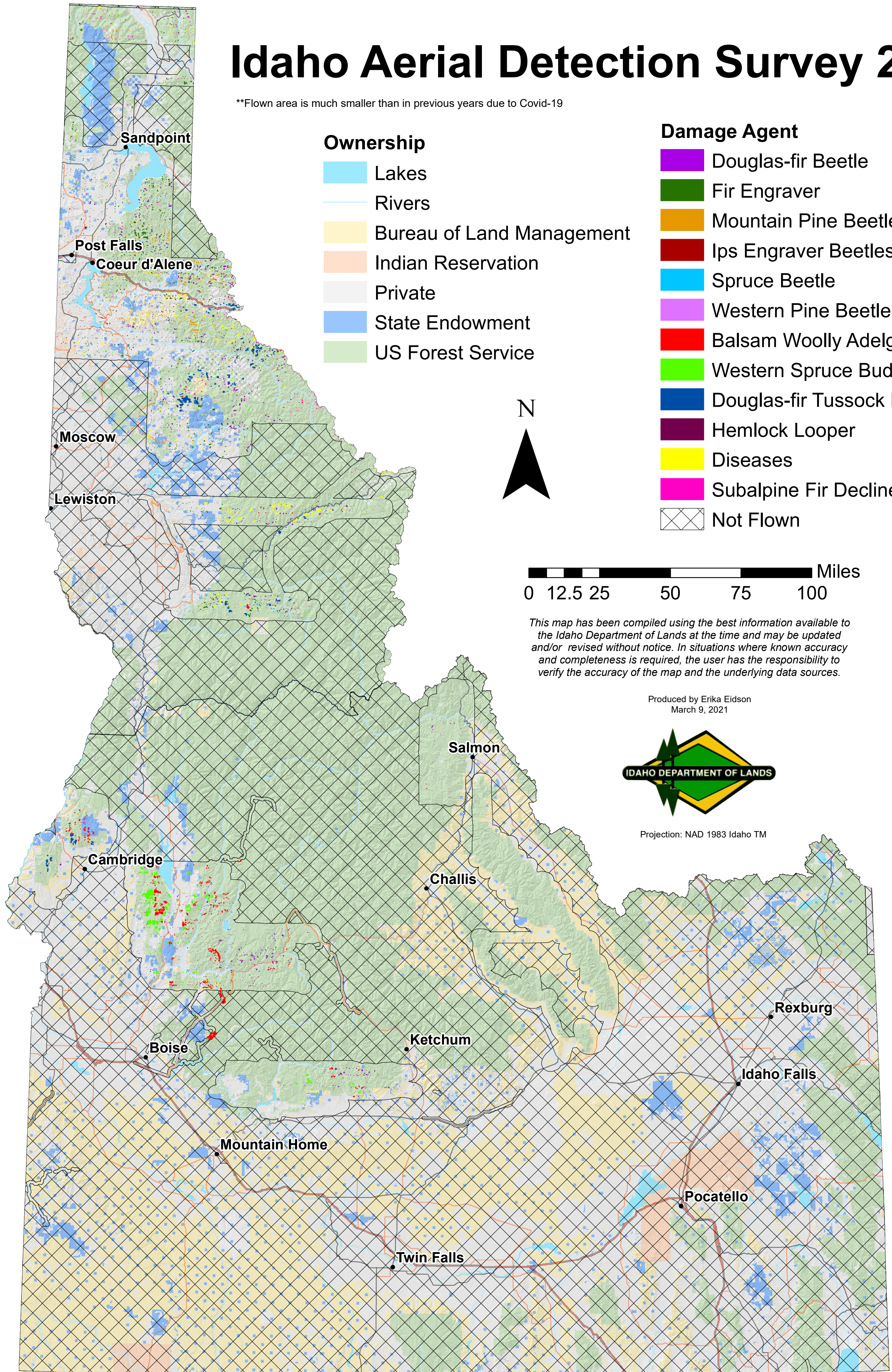


Idaho Aerial Detection Survey 2020

**Flown area is much smaller than in previous years due to Covid-19

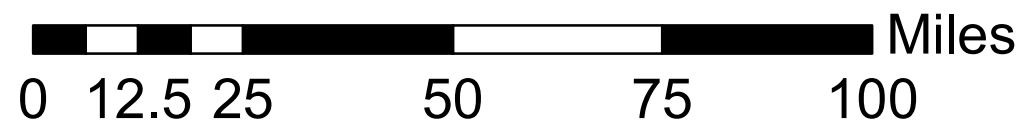
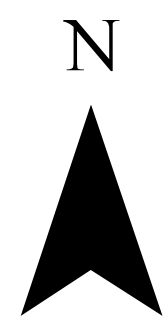


Ownership

- Lakes
- Rivers
- Bureau of Land Management
- Indian Reservation
- Private
- State Endowment
- US Forest Service

Damage Agent

- Douglas-fir Beetle
- Fir Engraver
- Mountain Pine Beetle
- Ips Engraver Beetles
- Spruce Beetle
- Western Pine Beetle
- Balsam Woolly Adelgid
- Western Spruce Budworm
- Douglas-fir Tussock Moth
- Hemlock Looper
- Diseases
- Subalpine Fir Decline
- Not Flown



This map has been compiled using the best information available to the Idaho Department of Lands at the time and may be updated and/or revised without notice. In situations where known accuracy and completeness is required, the user has the responsibility to verify the accuracy of the map and the underlying data sources.

Produced by Erika Eidson
March 9, 2021



Projection: NAD 1983 Idaho TM