

LEASE FACT SHEET: LEASE OPPORTUNITY

Report Date: 12/17/2020

Lease Number:	TBD	Applications Accepted:	Contact Area Office*
IDL Supervisory Area:	Payette Lakes	Public Auction Registration Deadline:	TBD
IDL Office Contact:	Diane Green	Public Auction Start Date/Time:	TBD
IDL Office Phone Number:	(208) 634-7125	Public Auction End Date/Time:	TBD
Asset Classification:	Mineral	Public Auction Location:	TBD
County:	Idaho		

EXPIRING LEASE

Lease Number:	E500012*	Primary Current Use:	Mining
Lease Start Date:	March 1, 2013	Number of Tracts:	N/A
Lease End Date:	February 28, 2023*		

* Please note that the expiring lease may be extended by IDL prior to the expiration date due to production or other criteria identified in Idaho law. Please contact IDL Staff regarding the status of an expiring lease prior to applying for a new lease.

PROPOSED LEASE

Lease Start Date:	March 1, 2023	Proposed Primary Activity:	Mining
Lease End Date:	TBD	Commodity Type:	Salable
Proposed Term Length:	Up to 20 years	Total Proposed Acres:	39
Access:	Yes	Animal Unit Months (AUM):	N/A
First Year Rent:	\$250.00	Water Rights:	N/A
Annual Rent Increase:	3%		
Minimum Annual Royalty:	TBD	Secondary Current Use:	N/A
Royalty:	TBD	Proposed Higher or Better Use:	Alternative uses may be proposed to IDL
Proposed Special Terms & Conditions:	TBD	Related Instruments:	N/A

DISCLAIMER: The Idaho Department of Lands (IDL) provides this product for informational purposes only. Consumers of this information should review or consult the primary data and information sources to ascertain the viability of the information for their purposes. IDL provides these data in good faith and in no event shall be liable for any incorrect information, result or analysis, any lost profits and special, indirect or consequential damages to any party, arising out of or in connection with the use or the inability to use the data or the product provided. IDL makes this data and product available as a convenience to the public, and for no other purpose. IDL reserves the right to change or revise published data and/or the product at any time.

EXHIBIT A: LEGAL DESCRIPTION

TWN	RNG	SEC	Legal Description	County	Endow	Acres	Grazing Acres	Dry Acres	Irrigated Acres	CRP Acres	Waste Acres	PHMA Acres	IHMA Acres	AUMs
24N	01E	28	Pts of SWNW	Idaho	PS	39								

DISCLAIMER: The Idaho Department of Lands (IDL) provides this product for informational purposes only. Consumers of this information should review or consult the primary data and information sources to ascertain the viability of the information for their purposes. IDL provides these data in good faith and in no event shall be liable for any incorrect information, result or analysis, any lost profits and special, indirect or consequential damages to any party, arising out of or in connection with the use or the inability to use the data or the product provided. IDL makes this data and product available as a convenience to the public, and for no other purpose. IDL reserves the right to change or revise published data and/or the product at any time.

EXHIBIT B: EXISTING IMPROVEMENTS

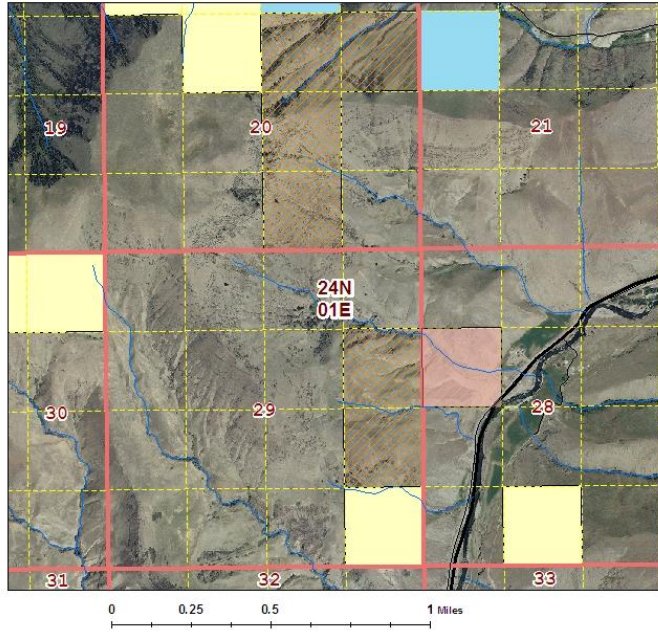
IMPROVEMENT	OWNERSHIP	ADDITIONAL BILLED USE
None		

DISCLAIMER: The Idaho Department of Lands (IDL) provides this product for informational purposes only. Consumers of this information should review or consult the primary data and information sources to ascertain the viability of the information for their purposes. IDL provides these data in good faith and in no event shall be liable for any incorrect information, result or analysis, any lost profits and special, indirect or consequential damages to any party, arising out of or in connection with the use or the inability to use the data or the product provided. IDL makes this data and product available as a convenience to the public, and for no other purpose. IDL reserves the right to change or revise published data and/or the product at any time.

EXHIBIT C: LEASE MAP



E500012: Idaho County Road Department



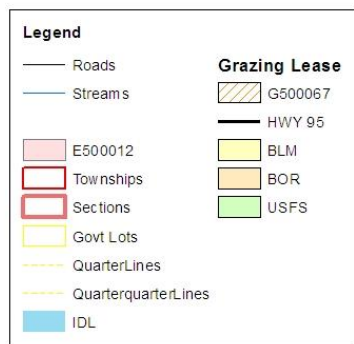
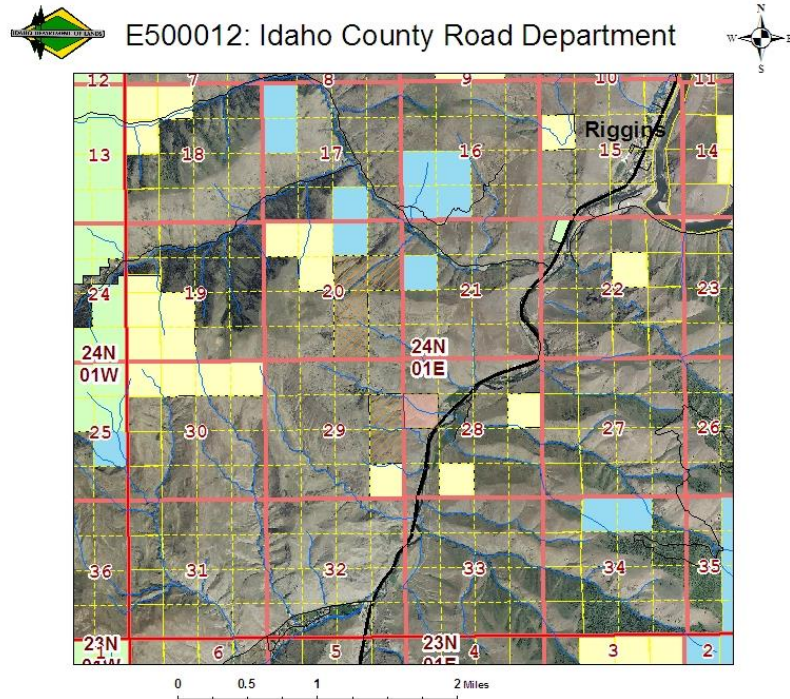
Legend	
Roads	E500012
Streams	Townships
E500012	Sections
Govt Lots	Grazing Lease
QuarterLines	G500067
QuarterquarterLines	HWY 95
IDL	BLM
	BOR
	USFS

2012 Expiring Grazing Lease
 Lease E500012 Detail Map
 T24N, R1E, Section 28
 Pts. SWNW (W of Hwy 95)
 Idaho County



DISCLAIMER: The Idaho Department of Lands (IDL) provides this product for informational purposes only. Consumers of this information should review or consult the primary data and information sources to ascertain the viability of the information for their purposes. IDL provides these data in good faith and in no event shall be liable for any incorrect information, result or analysis, any lost profits and special, indirect or consequential damages to any party, arising out of or in connection with the use or the inability to use the data or the product provided. IDL makes this data and product available as a convenience to the public, and for no other purpose. IDL reserves the right to change or revise published data and/or the product at any time.

EXHIBIT D: VICINITY MAP



2012 Expiring Grazing Lease
 Lease E500012 Vicinity Map
 T24N, R1E, Section 28
 Pts. SWNW (W of Hwy 95)
 Idaho County



DISCLAIMER: The Idaho Department of Lands (IDL) provides this product for informational purposes only. Consumers of this information should review or consult the primary data and information sources to ascertain the viability of the information for their purposes. IDL provides these data in good faith and in no event shall be liable for any incorrect information, result or analysis, any lost profits and special, indirect or consequential damages to any party, arising out of or in connection with the use or the inability to use the data or the product provided. IDL makes this data and product available as a convenience to the public, and for no other purpose. IDL reserves the right to change or revise published data and/or the product at any time.