

## LEASE FACT SHEET: LEASE OPPORTUNITY

Report Date: 3/1/2021

Lease Number:	TBD	Applications Accepted:	Contact Area Office*
IDL Supervisory Area:	Eastern-Jerome	Public Auction Registration Deadline:	TBD
IDL Office Contact:	Meribeth Lomkin	Public Auction Start Date/Time:	TBD
IDL Office Phone Number:	208-324-2561	Public Auction End Date/Time:	TBD
Asset Classification:	Mineral	Public Auction Location:	TBD
County:	Blaine		

## EXPIRING LEASE

Lease Number:	E700026*	Primary Current Use:	Mining
Lease Start Date:	March 1, 2014	Number of Tracts:	N/A
Lease End Date:	February 28, 2024*		

\* Please note that the expiring lease may be extended by IDL prior to the expiration date due to production or other criteria identified in Idaho law. Please contact IDL Staff regarding the status of an expiring lease prior to applying for a new lease.

## PROPOSED LEASE

Lease Start Date:	March 1, 2024	Proposed Primary Activity:	Mining
Lease End Date:	TBD	Commodity Type:	Salable Minerals
Proposed Term Length:	Up to 20 years	Total Proposed Acres:	320
Access:	TBD	Animal Unit Months (AUM):	N/A
First Year Rent:	\$960.00	Water Rights:	N/A
Annual Rent Increase:	3%		
Minimum Annual Royalty:	\$500.00	Secondary Current Use:	N/A
Royalty:	TBD	Proposed Higher or Better Use:	Alternative uses may be proposed to IDL
Proposed Special Terms & Conditions:	TBD	Related Instruments:	N/A

DISCLAIMER: The Idaho Department of Lands (IDL) provides this product for informational purposes only. Consumers of this information should review or consult the primary data and information sources to ascertain the viability of the information for their purposes. IDL provides these data in good faith and in no event shall be liable for any incorrect information, result or analysis, any lost profits and special, indirect or consequential damages to any party, arising out of or in connection with the use or the inability to use the data or the product provided. IDL makes this data and product available as a convenience to the public, and for no other purpose. IDL reserves the right to change or revise published data and/or the product at any time.

**EXHIBIT A: LEGAL DESCRIPTION**

TWN	RN G	SEC	Legal Description	County	Endow	Acres	Grazing Acres	Dry Acres	Irrigated Acres	CRP Acres	Waste Acres	PHMA Acres	IHMA Acres	AUMs
01N	22E	36	E2	Blaine	PS	320								

**EXHIBIT B: EXISTING IMPROVEMENTS**

**DISCLAIMER:** The Idaho Department of Lands (IDL) provides this product for informational purposes only. Consumers of this information should review or consult the primary data and information sources to ascertain the viability of the information for their purposes. IDL provides these data in good faith and in no event shall be liable for any incorrect information, result or analysis, any lost profits and special, indirect or consequential damages to any party, arising out of or in connection with the use or the inability to use the data or the product provided. IDL makes this data and product available as a convenience to the public, and for no other purpose. IDL reserves the right to change or revise published data and/or the product at any time.

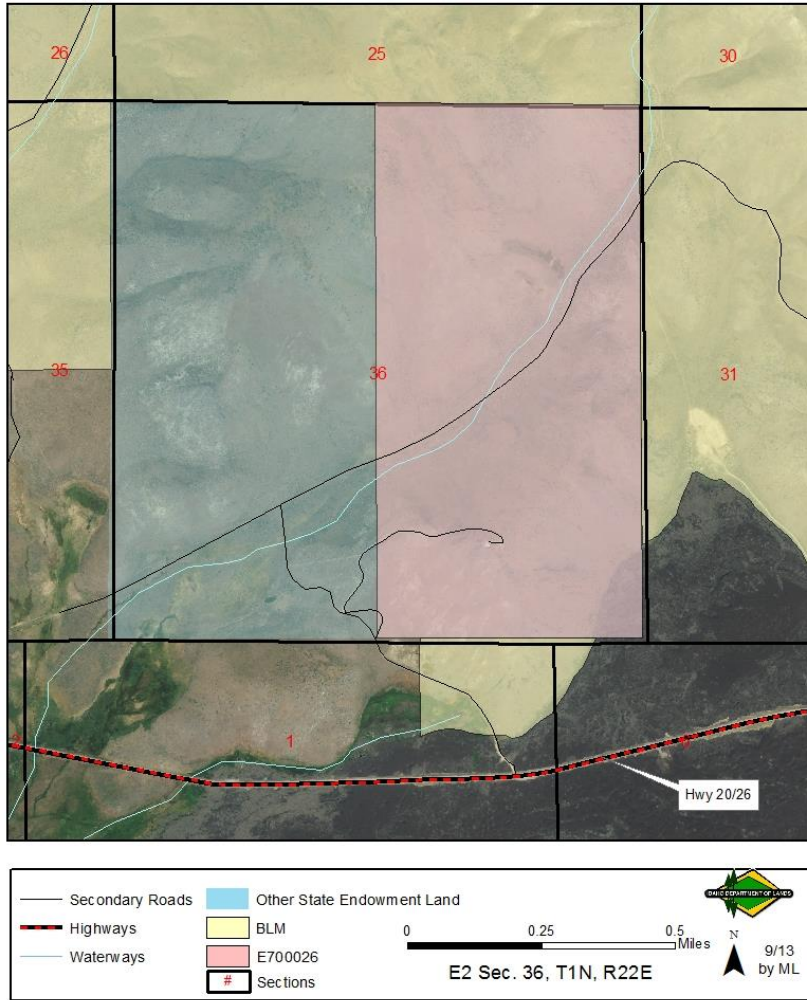
**IMPROVEMENT****OWNERSHIP****ADDITIONAL BILLED USE**

<b>None</b>		

**DISCLAIMER:** The Idaho Department of Lands (IDL) provides this product for informational purposes only. Consumers of this information should review or consult the primary data and information sources to ascertain the viability of the information for their purposes. IDL provides these data in good faith and in no event shall be liable for any incorrect information, result or analysis, any lost profits and special, indirect or consequential damages to any party, arising out of or in connection with the use or the inability to use the data or the product provided. IDL makes this data and product available as a convenience to the public, and for no other purpose. IDL reserves the right to change or revise published data and/or the product at any time.

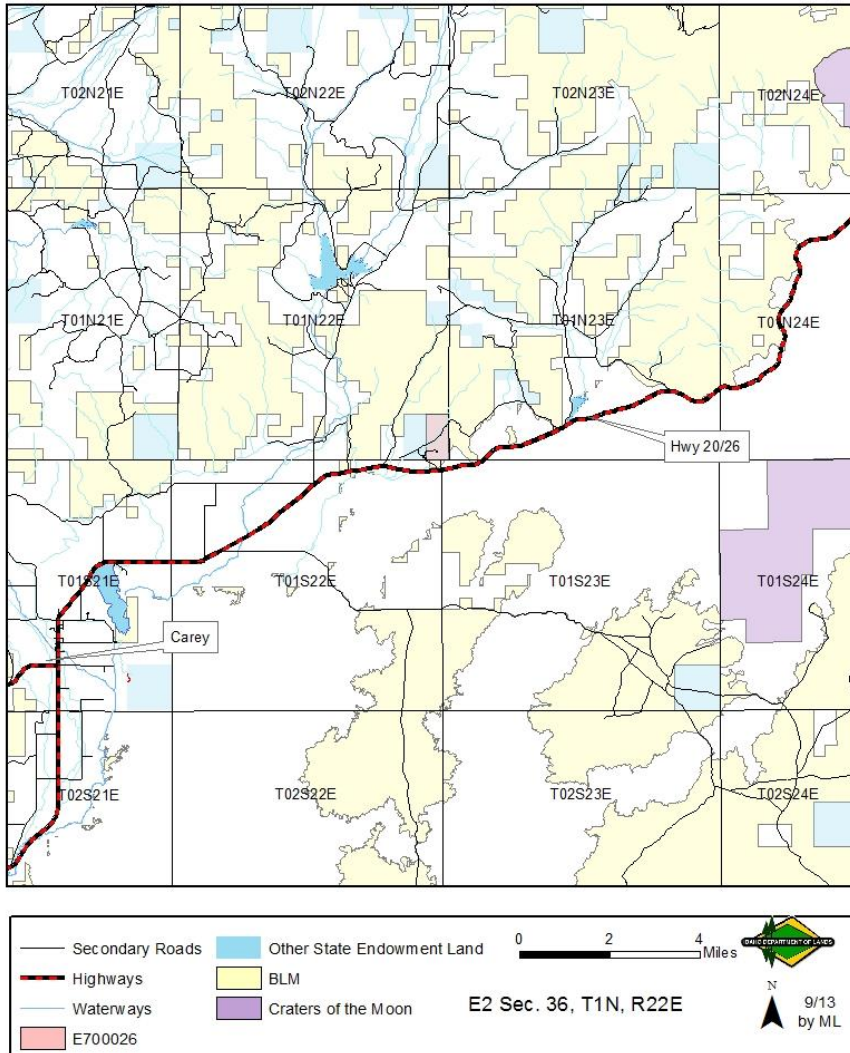
**EXHIBIT C: LEASE MAP**

Mineral Lease E700026  
Detail Map



**DISCLAIMER:** The Idaho Department of Lands (IDL) provides this product for informational purposes only. Consumers of this information should review or consult the primary data and information sources to ascertain the viability of the information for their purposes. IDL provides these data in good faith and in no event shall be liable for any incorrect information, result or analysis, any lost profits and special, indirect or consequential damages to any party, arising out of or in connection with the use or the inability to use the data or the product provided. IDL makes this data and product available as a convenience to the public, and for no other purpose. IDL reserves the right to change or revise published data and/or the product at any time.

Mineral Lease E700026  
Vicinity Map



**DISCLAIMER: The Idaho Department of Lands (IDL) provides this product for informational purposes only. Consumers of this information should review or consult the primary data and information sources to ascertain the viability of the information for their purposes. IDL provides these data in good faith and in no event shall be liable for any incorrect information, result or analysis, any lost profits and special, indirect or consequential damages to any party, arising out of or in connection with the use or the inability to use the data or the product provided. IDL makes this data and product available as a convenience to the public, and for no other purpose. IDL reserves the right to change or revise published data and/or the product at any time.**