

LEASE FACT SHEET: LEASE OPPORTUNITY

Report Date: 3/1/2021

| | | | |
|--------------------------|-----------------|---------------------------------------|----------------------|
| Lease Number: | TBD | Applications Accepted: | Contact Area Office* |
| IDL Supervisory Area: | Eastern-Jerome | Public Auction Registration Deadline: | TBD |
| IDL Office Contact: | Meribeth Lomkin | Public Auction Start Date/Time: | TBD |
| IDL Office Phone Number: | 208-324-2561 | Public Auction End Date/Time: | TBD |
| Asset Classification: | Mineral | Public Auction Location: | TBD |
| County: | Blaine | | |

EXPIRING LEASE

| | | | |
|-------------------|--------------------|----------------------|--------|
| Lease Number: | E700027* | Primary Current Use: | Mining |
| Lease Start Date: | March 1, 2014 | Number of Tracts: | N/A |
| Lease End Date: | February 28, 2024* | | |

* Please note that the expiring lease may be extended by IDL prior to the expiration date due to production or other criteria identified in Idaho law. Please contact IDL Staff regarding the status of an expiring lease prior to applying for a new lease.

PROPOSED LEASE

| | | | |
|--------------------------------------|----------------|--------------------------------|---|
| Lease Start Date: | March 1, 2024 | Proposed Primary Activity: | Mining |
| Lease End Date: | TBD | Commodity Type: | Salable/Metallic Minerals |
| Proposed Term Length: | Up to 20 years | Total Proposed Acres: | 160 |
| Access: | TBD | Animal Unit Months (AUM): | N/A |
| First Year Rent: | \$480.00 | Water Rights: | N/A |
| Annual Rent Increase: | 3% | | |
| Minimum Annual Royalty: | \$1,000.00 | Secondary Current Use: | N/A |
| Royalty: | TBD | Proposed Higher or Better Use: | Alternative uses may be proposed to IDL |
| Proposed Special Terms & Conditions: | Sage-grouse | Related Instruments: | N/A |

DISCLAIMER: The Idaho Department of Lands (IDL) provides this product for informational purposes only. Consumers of this information should review or consult the primary data and information sources to ascertain the viability of the information for their purposes. IDL provides these data in good faith and in no event shall be liable for any incorrect information, result or analysis, any lost profits and special, indirect or consequential damages to any party, arising out of or in connection with the use or the inability to use the data or the product provided. IDL makes this data and product available as a convenience to the public, and for no other purpose. IDL reserves the right to change or revise published data and/or the product at any time.

EXHIBIT A: LEGAL DESCRIPTION

| TWN | RNG | SEC | Legal Description | County | Endow | Acres | Grazing Acres | Dry Acres | Irrigated Acres | CRP Acres | Waste Acres | PHMA Acres | IHMA Acres | AUMs |
|-----|-----|-----|-------------------|--------|-------|-------|---------------|-----------|-----------------|-----------|-------------|------------|------------|------|
| 01N | 17E | 24 | W2NW, SENW, SWNE | Blaine | PS | 160 | | | | | | TBD | TBD | |
| | | | | | | | | | | | | | | |
| | | | | | | | | | | | | | | |
| | | | | | | | | | | | | | | |

DISCLAIMER: The Idaho Department of Lands (IDL) provides this product for informational purposes only. Consumers of this information should review or consult the primary data and information sources to ascertain the viability of the information for their purposes. IDL provides these data in good faith and in no event shall be liable for any incorrect information, result or analysis, any lost profits and special, indirect or consequential damages to any party, arising out of or in connection with the use or the inability to use the data or the product provided. IDL makes this data and product available as a convenience to the public, and for no other purpose. IDL reserves the right to change or revise published data and/or the product at any time.

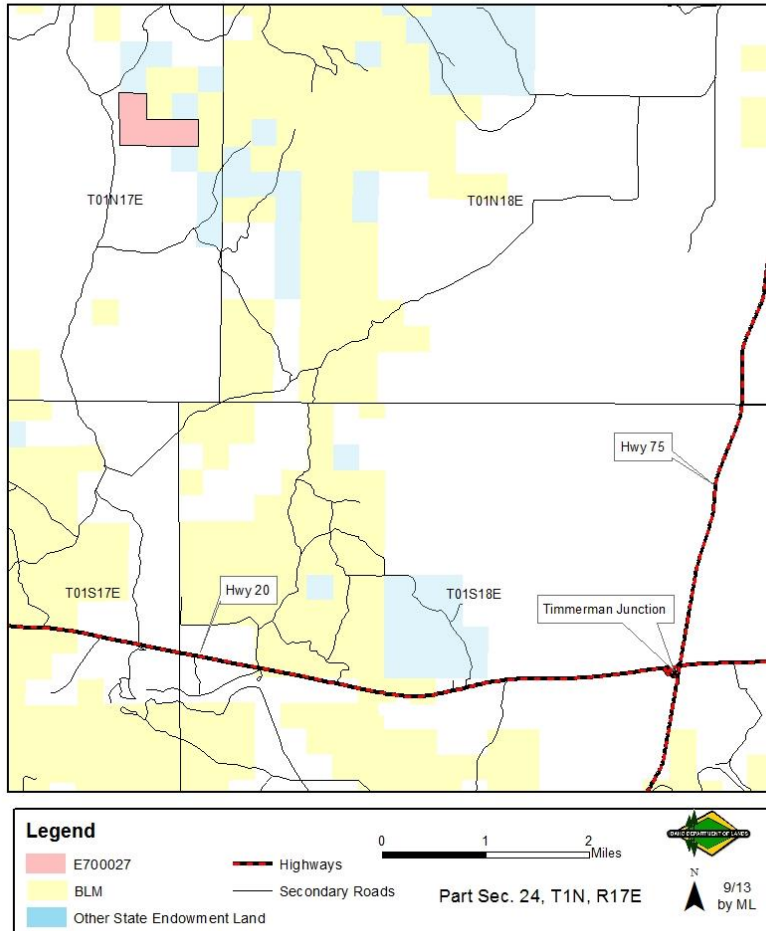
EXHIBIT B: EXISTING IMPROVEMENTS

| IMPROVEMENT | OWNERSHIP | ADDITIONAL BILLED USE |
|-------------|-----------|-----------------------|
| None | | |
| | | |
| | | |
| | | |
| | | |
| | | |

DISCLAIMER: The Idaho Department of Lands (IDL) provides this product for informational purposes only. Consumers of this information should review or consult the primary data and information sources to ascertain the viability of the information for their purposes. IDL provides these data in good faith and in no event shall be liable for any incorrect information, result or analysis, any lost profits and special, indirect or consequential damages to any party, arising out of or in connection with the use or the inability to use the data or the product provided. IDL makes this data and product available as a convenience to the public, and for no other purpose. IDL reserves the right to change or revise published data and/or the product at any time.

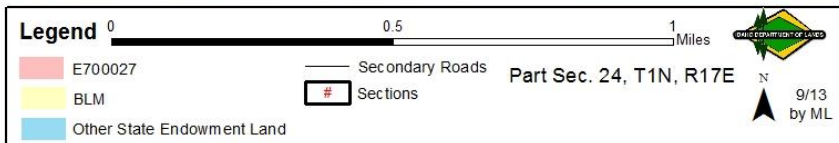
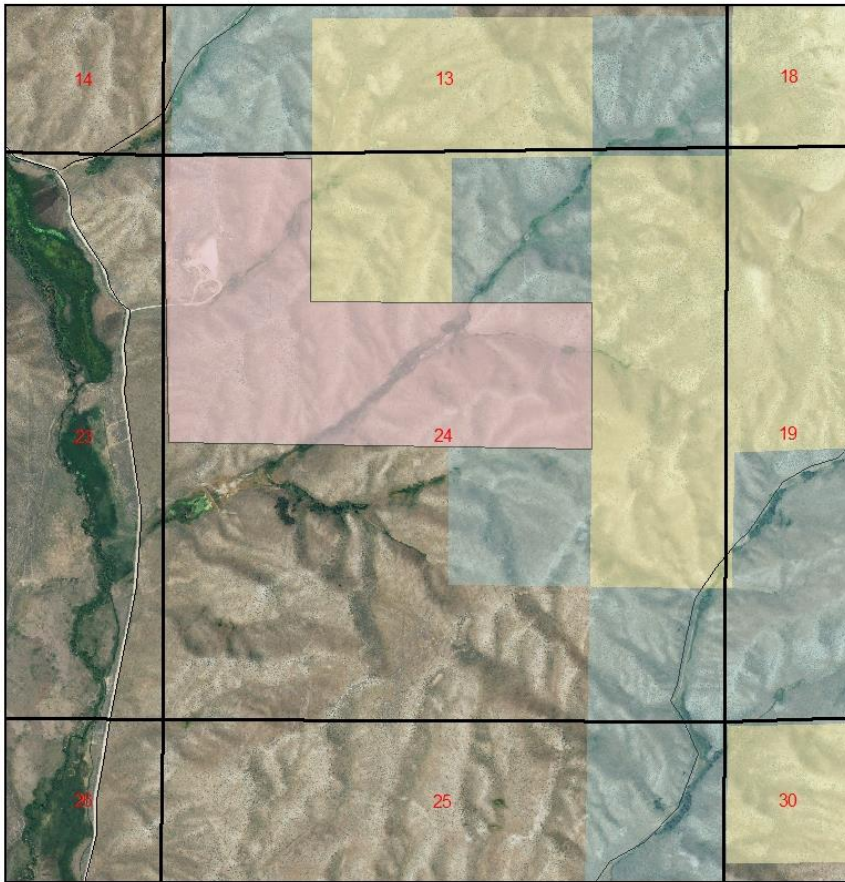
EXHIBIT C: LEASE MAP

Mineral Lease E700027
Vicinity Map



DISCLAIMER: The Idaho Department of Lands (IDL) provides this product for informational purposes only. Consumers of this information should review or consult the primary data and information sources to ascertain the viability of the information for their purposes. IDL provides these data in good faith and in no event shall be liable for any incorrect information, result or analysis, any lost profits and special, indirect or consequential damages to any party, arising out of or in connection with the use or the inability to use the data or the product provided. IDL makes this data and product available as a convenience to the public, and for no other purpose. IDL reserves the right to change or revise published data and/or the product at any time.

Mineral Lease E700027
Detail Map



DISCLAIMER: The Idaho Department of Lands (IDL) provides this product for informational purposes only. Consumers of this information should review or consult the primary data and information sources to ascertain the viability of the information for their purposes. IDL provides these data in good faith and in no event shall be liable for any incorrect information, result or analysis, any lost profits and special, indirect or consequential damages to any party, arising out of or in connection with the use or the inability to use the data or the product provided. IDL makes this data and product available as a convenience to the public, and for no other purpose. IDL reserves the right to change or revise published data and/or the product at any time.