



LEASE FACT SHEET: LEASE OPPORTUNITY

Lease Number: G800134

Applications Accepted: 1/1/2021 - 4/30/2021

Supervisory Area: Eastern Id Falls

Asset Classification: Rangeland

County: Bingham, Bonneville

Report Date: 12/31/2019

Public Auction Date: TBD

Office Contact: Heath Hancock

Office Number: 208-525-7167

EXPIRING LEASE

Lease Start Date: 1/1/2012

Lease End Date: 12/31/2021

Primary Current Use: Grazing

PROPOSED LEASE

Lease Start Date: 1/1/2022

Lease End Date: 12/31/2041

Proposed Term Length: 20 Yrs

Access: Contact Area Office

First Year Rent: TBD

Annual Increase: No

Royalty: N/A

Proposed Primary Activity: Grazing

Commodity Type: Cattle

Total Proposed Acres: 14,191.96

Animal Unit Months (AUM): 1,272

Water Rights: 357446, 357802

Secondary Current Use: N/A

Proposed Higher or Better Use: Alternative uses may be proposed to IDL

Proposed Special Terms & Conditions:

See Lease Draft

Related Instruments: N/A

DISCLAIMER: The Idaho Department of Lands (IDL) provides this product for informational purposes only. Consumers of this information should review or consult the primary data and information sources to ascertain the viability of the information for their purposes. IDL provides these data in good faith and in no event, shall be liable for any incorrect information, result or analysis, any lost profits and special, indirect or consequential damages to any party, arising out of or in connection with the use or the inability to use the data or the product provided. IDL makes this data and product available as a convenience to the public, and for no other purpose. IDL reserves the right to change or revise published data and/or the product at any time.



Exhibit A: LEGAL DESCRIPTION

TWN	RNG	SEC	Legal Description	County	Endow	Grazing Acres	Dry Acres	Irrigated Acres	CRP Acres	Waste Acres	PHMA Acres	IHMA Acres	AUMs
02N	33E	29	ALL	BINGHAM COUNTY	PS	640.34	0	0	0	0	0	0	40
01N	33E	4	Gov Lots 1-4, S2N2, S2	BINGHAM COUNTY	PS	648.92	0	0	0	0	0	0	104
02N	33E	20	ALL	BINGHAM COUNTY	PS	639.86	0	0	0	0	0	0	40
02N	33E	10	N2,SW,NWSE	BINGHAM COUNTY	PS	519.4	0	0	0	0	0	0	52
02N	33E	31	Gov Lots 1-4, E2, E2W2	BINGHAM COUNTY	PS	633.85	0	0	0	0	0	0	40
02N	33E	32	ALL	BINGHAM COUNTY	PS	640.2	0	0	0	0	0	0	40
02N	33E	21	ALL	BINGHAM COUNTY	PS	640.26	0	0	0	0	0	0	60
02N	33E	3	LOTS 1-4, S2N2, S2	BINGHAM COUNTY	PS	581.26	0	0	0	0	0	0	62
02N	33E	22	ALL	BINGHAM COUNTY	PS	639.4	0	0	0	0	0	0	54
02N	33E	28	ALL	BINGHAM COUNTY	PS	639.51	0	0	0	0	0	0	93
02N	33E	34	N2,SW	BINGHAM COUNTY	PS	479.7	0	0	0	0	0	0	76
02N	33E	16	ALL	BINGHAM COUNTY	PS	640.37	0	0	0	0	0	0	44
02N	33E	33	ALL	BINGHAM COUNTY	PS	639.46	0	0	0	0	0	0	90
01N	33E	6	Gov Lots 1-7, S2NE, SENW, E2SW, SE	BINGHAM COUNTY	PS	642.8	0	0	0	0	0	0	40
01N	33E	3	Gov Lot 4, S2NW, S2	BINGHAM COUNTY	PS	442.41	0	0	0	0	0	0	50
02N	33E	8	S2S2	BINGHAM COUNTY	PS	160.16	0	0	0	0	0	0	17
02N	33E	27	ALL	BINGHAM COUNTY	PS	639.46	0	0	0	0	0	0	68
02N	33E	17	ALL	BINGHAM COUNTY	PS	640.47	0	0	0	0	0	0	40
02N	33E	15	ALL	BINGHAM COUNTY	PS	639.18	0	0	0	0	0	0	49
02N	33E	18	Gov Lots 1-4, E2, E2W2	BINGHAM COUNTY	PS	631.02	0	0	0	0	0	0	40
02N	33E	19	Gov Lots 1-4, E2, E2W2	BINGHAM COUNTY	PS	631.66	0	0	0	0	0	0	40
02N	33E	9	E2SE	BINGHAM COUNTY	PS	80.05	0	0	0	0	0	0	8
02N	33E	4	Gov Lots 1-4, S2NE, SENW, NESW, SE	BINGHAM COUNTY	PS	421.34	0	0	0	0	0	0	45
01N	33E	5	Gov Lots 1-4, E2, E2W2	BINGHAM COUNTY	PS	647.92	0	0	0	0	0	0	40
02N	33E	30	Gov Lots 1-4, E2, E2W2	BINGHAM COUNTY	PS	632.96	0	0	0	0	0	0	40
													14,191.96
													1,272.00

DISCLAIMER: The Idaho Department of Lands (IDL) provides this product for informational purposes only. Consumers of this information should review or consult the primary data and information sources to ascertain the viability of the information for their purposes. IDL provides these data in good faith and in no event, shall be liable for any incorrect information, result or analysis, any lost profits and special, indirect or consequential damages to any party, arising out of or in connection with the use or the inability to use the data or the product provided. IDL makes this data and product available as a convenience to the public, and for no other purpose. IDL reserves the right to change or revise published data and/or the product at any time.



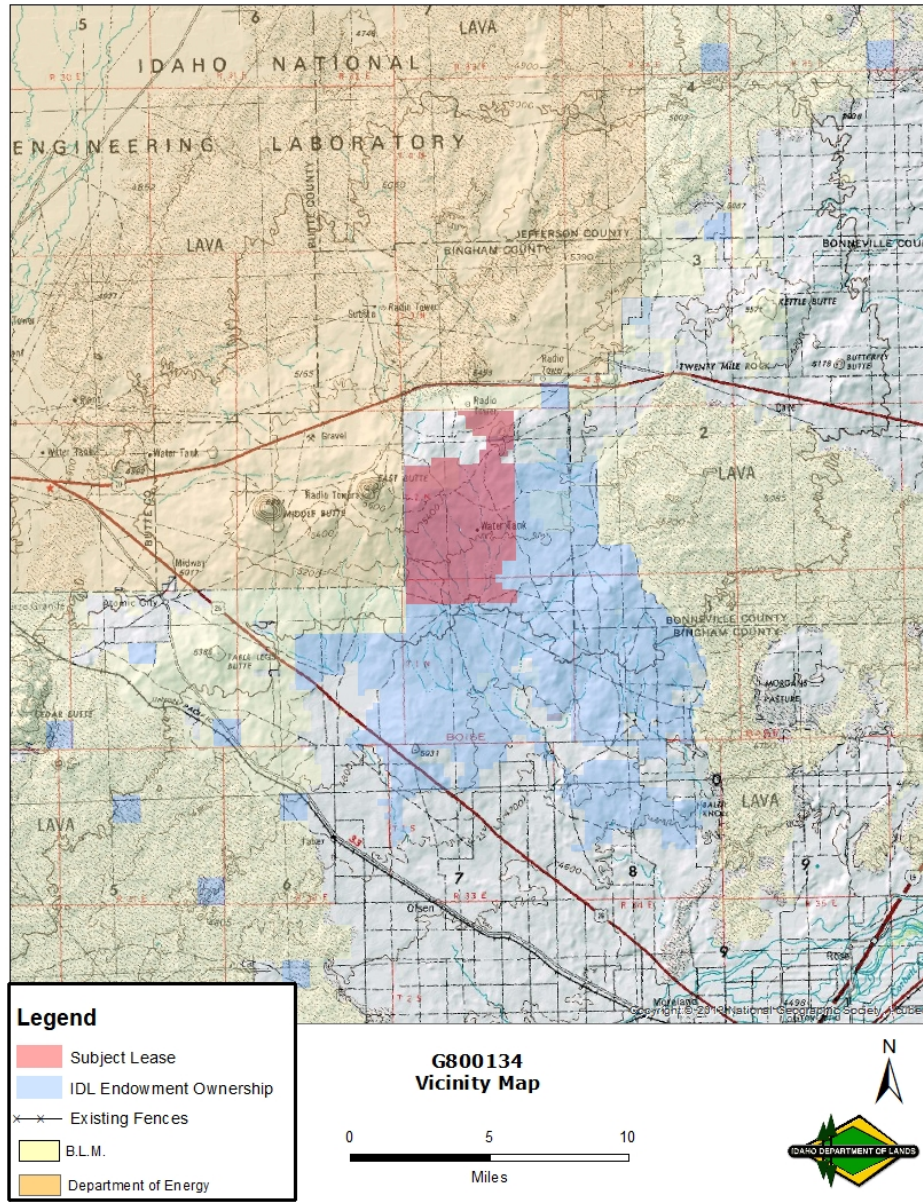
Exhibit B: EXISTING IMPROVEMENTS

IMPROVEMENT	OWNERSHIP	ADDITIONAL BILLED USE

DISCLAIMER: The Idaho Department of Lands (IDL) provides this product for informational purposes only. Consumers of this information should review or consult the primary data and information sources to ascertain the viability of the information for their purposes. IDL provides these data in good faith and in no event, shall be liable for any incorrect information, result or analysis, any lost profits and special, indirect or consequential damages to any party, arising out of or in connection with the use or the inability to use the data or the product provided. IDL makes this data and product available as a convenience to the public, and for no other purpose. IDL reserves the right to change or revise published data and/or the product at any time.



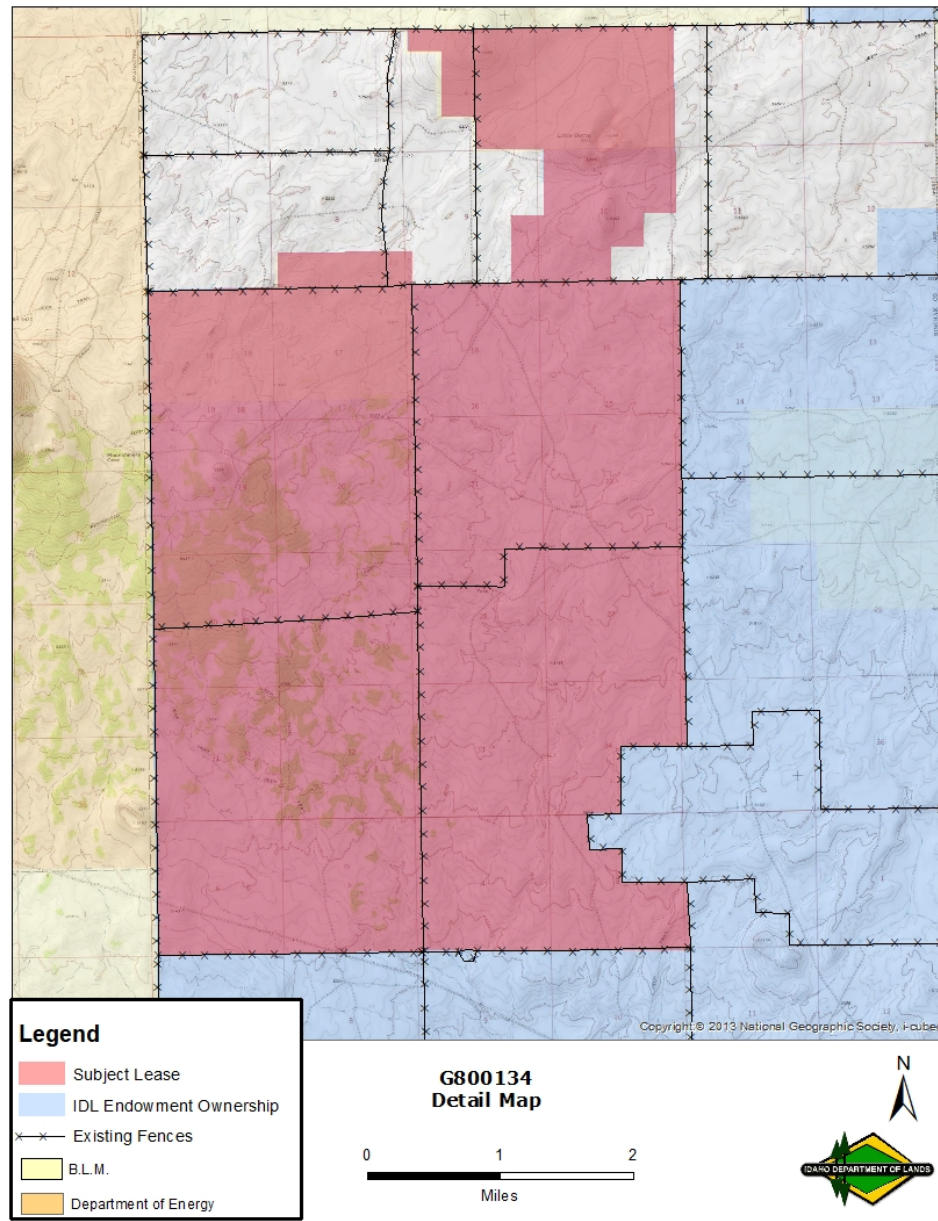
Exhibit C: VICINITY MAP



DISCLAIMER: The Idaho Department of Lands (IDL) provides this product for informational purposes only. Consumers of this information should review or consult the primary data and information sources to ascertain the viability of the information for their purposes. IDL provides these data in good faith and in no event, shall be liable for any incorrect information, result or analysis, any lost profits and special, indirect or consequential damages to any party, arising out of or in connection with the use or the inability to use the data or the product provided. IDL makes this data and product available as a convenience to the public, and for no other purpose. IDL reserves the right to change or revise published data and/or the product at any time.



Exhibit D: LEASE MAP



DISCLAIMER: The Idaho Department of Lands (IDL) provides this product for informational purposes only. Consumers of this information should review or consult the primary data and information sources to ascertain the viability of the information for their purposes. IDL provides these data in good faith and in no event, shall be liable for any incorrect information, result or analysis, any lost profits and special, indirect or consequential damages to any party, arising out of or in connection with the use or the inability to use the data or the product provided. IDL makes this data and product available as a convenience to the public, and for no other purpose. IDL reserves the right to change or revise published data and/or the product at any time.