



LEASE FACT SHEET: LEASE OPPORTUNITY

Lease Number: G800403

Applications Accepted: 1/1/2021 - 4/30/2021

Supervisory Area: Eastern Id Falls

Asset Classification: Rangeland

County: Bingham, Bonneville

Report Date: 12/31/2019

Public Auction Date: TBD

Office Contact: Heath Hancock

Office Number: 208-525-7167

EXPIRING LEASE

Lease Start Date: 1/1/2019

Lease End Date: 12/31/2021

Primary Current Use: Grazing

PROPOSED LEASE

Lease Start Date: 1/1/2022

Lease End Date: 12/31/2041

Proposed Term Length: 20 Yrs

Access: Contact Area Office

First Year Rent: TBD

Annual Increase: No

Royalty: N/A

Proposed Primary Activity: Grazing

Commodity Type: Cattle

Total Proposed Acres: 5,639.42

Animal Unit Months (AUM): 549

Water Rights: 35-11613, 35-11614

Secondary Current Use: N/A

Proposed Higher or Better Use: Alternative uses may be proposed to IDL

Proposed Special Terms & Conditions:

See Lease Draft

Related Instruments: N/A

DISCLAIMER: The Idaho Department of Lands (IDL) provides this product for informational purposes only. Consumers of this information should review or consult the primary data and information sources to ascertain the viability of the information for their purposes. IDL provides these data in good faith and in no event, shall be liable for any incorrect information, result or analysis, any lost profits and special, indirect or consequential damages to any party, arising out of or in connection with the use or the inability to use the data or the product provided. IDL makes this data and product available as a convenience to the public, and for no other purpose. IDL reserves the right to change or revise published data and/or the product at any time.



Exhibit A: LEGAL DESCRIPTION

TWN	RNG	SEC	Legal Description	County	Endow	Acres	Dry Acres	Irrigated Acres	CRP Acres	Waste Acres	PHMA Acres	IHMA Acres	AUMs
02N	33E	24	ALL	BINGHAM COUNTY	PS	638.84	0	0	0	0	0	0	74
02N	33E	14	ALL	BINGHAM COUNTY	PS	638.87	0	0	0	0	0	0	60
02N	34E	19	Gov Lots 1, 2, E2NW, Pts NWNE, SWNE, Pts SENE	BONNEVILLE COUNTY	PS	229.1	0	0	0	0	0	0	32
02N	34E	18	Gov Lots 1, 2, 3, 4, E2W2, W2NE, NWSE, Pts SWSE	BONNEVILLE COUNTY	PS	455.88	0	0	0	0	0	0	62
02N	33E	25	N2, SW, W2SE	BINGHAM COUNTY	PS	639.41	0	0	0	0	0	0	59
02N	33E	35	N2NE, NW	BINGHAM COUNTY	PS	239.87	0	0	0	0	0	0	18
02N	33E	13	ALL	BINGHAM COUNTY	PS	638.94	0	0	0	0	0	0	58
02N	33E	12	SE	BINGHAM COUNTY	PS	159.8	0	0	0	0	0	0	16
02N	33E	26	ALL	BINGHAM COUNTY	PS	639.61	0	0	0	0	0	0	49
02N	33E	23	ALL	BINGHAM COUNTY	PS	639.08	0	0	0	0	0	0	64
02N	33E	36	ALL	BINGHAM COUNTY	PS	640.02	0	0	0	0	0	0	49
02N	33E	25	E2SE	BINGHAM COUNTY	AC	80	0	0	0	0	0	0	8
						5639.42							549

DISCLAIMER: The Idaho Department of Lands (IDL) provides this product for informational purposes only. Consumers of this information should review or consult the primary data and information sources to ascertain the viability of the information for their purposes. IDL provides these data in good faith and in no event, shall be liable for any incorrect information, result or analysis, any lost profits and special, indirect or consequential damages to any party, arising out of or in connection with the use or the inability to use the data or the product provided. IDL makes this data and product available as a convenience to the public, and for no other purpose. IDL reserves the right to change or revise published data and/or the product at any time.



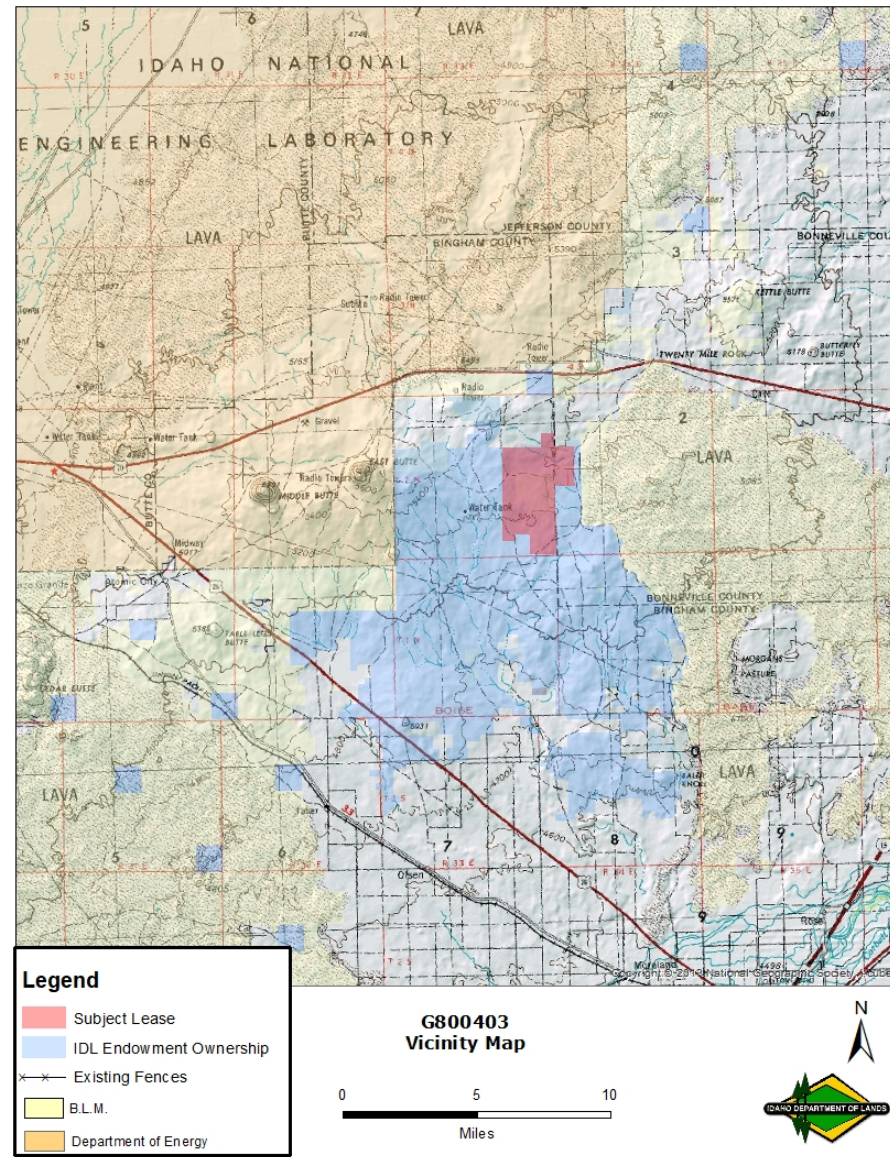
Exhibit B: EXISTING IMPROVEMENTS

IMPROVEMENT	OWNERSHIP	ADDITIONAL BILLED USE

DISCLAIMER: The Idaho Department of Lands (IDL) provides this product for informational purposes only. Consumers of this information should review or consult the primary data and information sources to ascertain the viability of the information for their purposes. IDL provides these data in good faith and in no event, shall be liable for any incorrect information, result or analysis, any lost profits and special, indirect or consequential damages to any party, arising out of or in connection with the use or the inability to use the data or the product provided. IDL makes this data and product available as a convenience to the public, and for no other purpose. IDL reserves the right to change or revise published data and/or the product at any time.



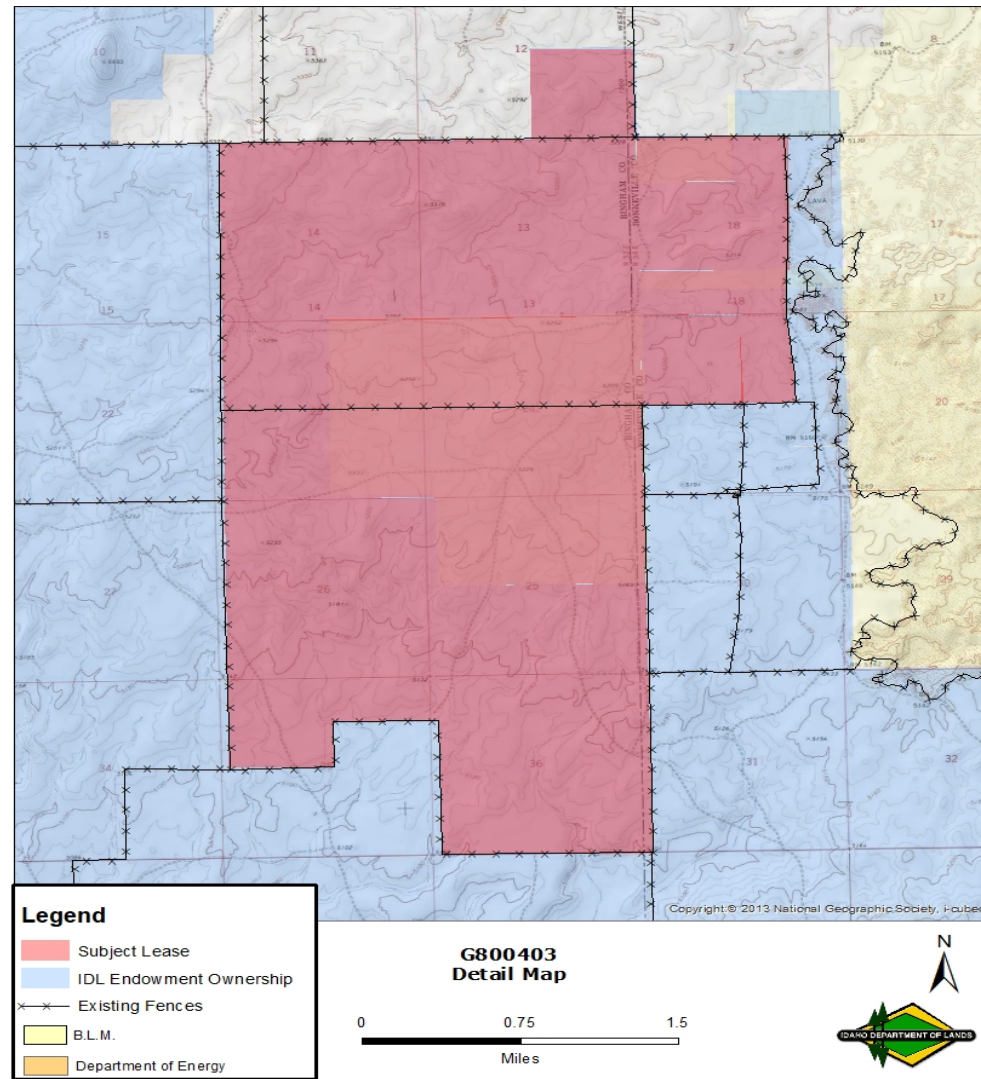
Exhibit C: VICINITY MAP



DISCLAIMER: The Idaho Department of Lands (IDL) provides this product for informational purposes only. Consumers of this information should review or consult the primary data and information sources to ascertain the viability of the information for their purposes. IDL provides these data in good faith and in no event, shall be liable for any incorrect information, result or analysis, any lost profits and special, indirect or consequential damages to any party, arising out of or in connection with the use or the inability to use the data or the product provided. IDL makes this data and product available as a convenience to the public, and for no other purpose. IDL reserves the right to change or revise published data and/or the product at any time.



Exhibit D: LEASE MAP



DISCLAIMER: The Idaho Department of Lands (IDL) provides this product for informational purposes only. Consumers of this information should review or consult the primary data and information sources to ascertain the viability of the information for their purposes. IDL provides these data in good faith and in no event, shall be liable for any incorrect information, result or analysis, any lost profits and special, indirect or consequential damages to any party, arising out of or in connection with the use or the inability to use the data or the product provided. IDL makes this data and product available as a convenience to the public, and for no other purpose. IDL reserves the right to change or revise published data and/or the product at any time.