

STATE BOARD OF LAND COMMISSIONERS
June 18, 2013
Information Agenda

SUBJECT

Update on Rangeland Fire Protection Associations (RFPA)

BACKGROUND

Prior to the 2012 fire season, ranchers around Mountain Home formed the first Rangeland Fire Protection Association (RFPA) in the State of Idaho. Three additional RFPA's (Owyhee, Saylor Creek and Three Creek) formed in early 2013. These four RFPA's cover over 3.6 million acres with 168 members (Maps 1 & 2).

<u>RFPA</u>	<u>Acreage Protected</u>	<u>Number of Members</u>
Mt. Home	454,000	21
Owyhee	1,342,000	55
Saylor Creek	696,000	59
Three Creek	1,130,000	33

The benefits of forming RFPA's include:

- recognizing ranchers who desire to assist in suppressing range fires and be eligible to receive Federal Excess Personal Property (FEPP) equipment;
- improving relationships, coordination, communication and safety between the RFPA members and the federal agencies with primary fire protection responsibilities; and
- increasing the safety and effectiveness of initial attack efforts to help minimize loss of rangelands and core sage grouse habitat (Map 3).

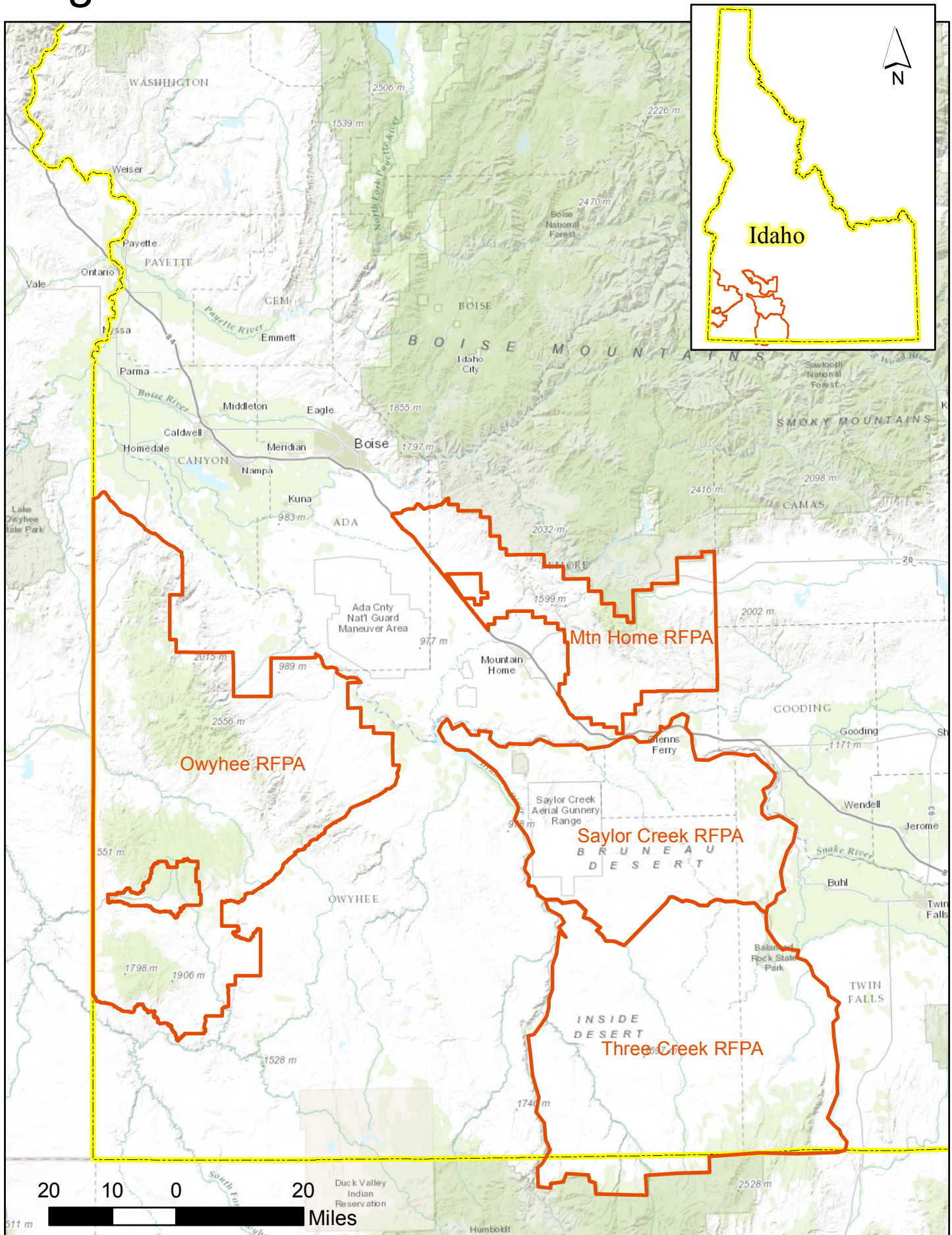
Idaho Code Section 38-104 was amended during the 2013 legislative session to clarify the requirements and process for establishment of a nonprofit rangeland fire protection association. In addition to this clarifying legislation, the Governor also included funds (\$300K) in his budget to assist new RFPA's with one-time startup costs associated with training, purchase of personal protective equipment and radios, refurbishment of FEPP equipment, and other incidental costs. Ongoing funds (\$100K) were also included to create a south Idaho fire position to work with these RFPA's. Interviews for this position will occur in June with an anticipated fill date sometime in July.

An additional 3 or 4 RFPA's may form prior to the 2014 fire season (Map 4). Areas of interest include Owyhee County, Twin Falls/Cassia County, Lincoln County, Custer/Lemhi County and Washington/Adams County. Sufficient funds remain to help offset the initial start-up costs for these additional RFPA's.

ATTACHMENTS

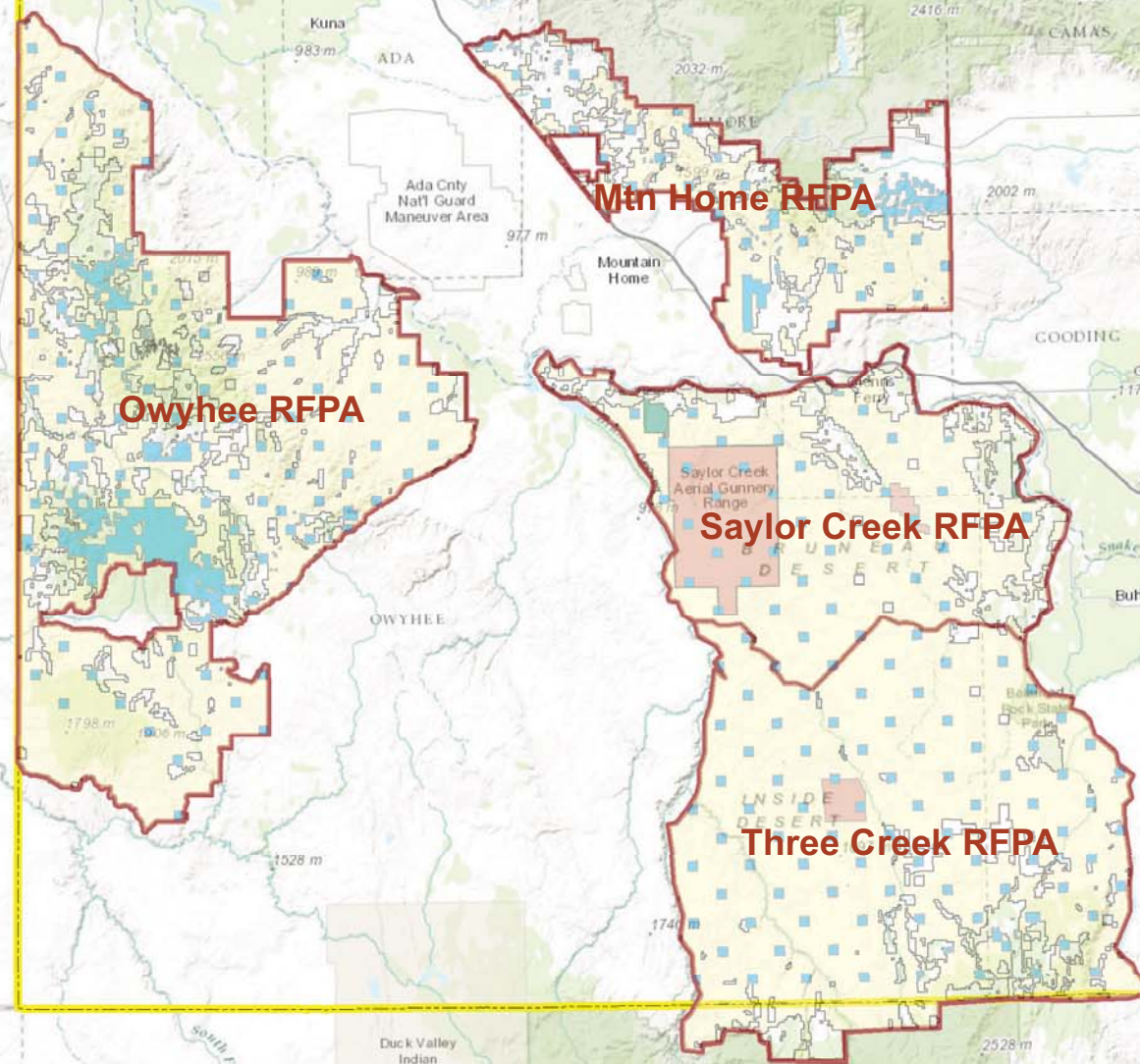
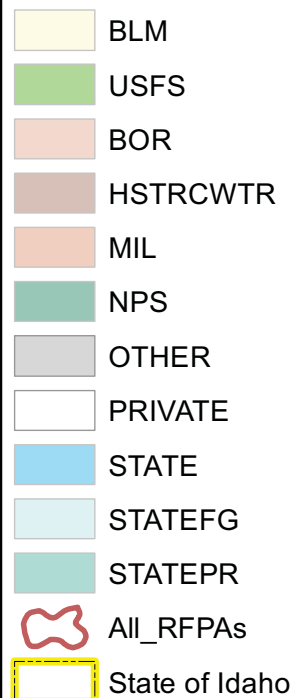
- Map 1 – RFPA Boundaries
- Map 2 – Ownership within RFPA Boundaries
- Map 3 – Sage Grouse Habitat within RFPA Boundaries
- Map 4 – Potential Location of Future RFPA's

Rangeland Fire Protection Associations April 2013



Rangeland Fire Protection Associations

Ownership by RFPA

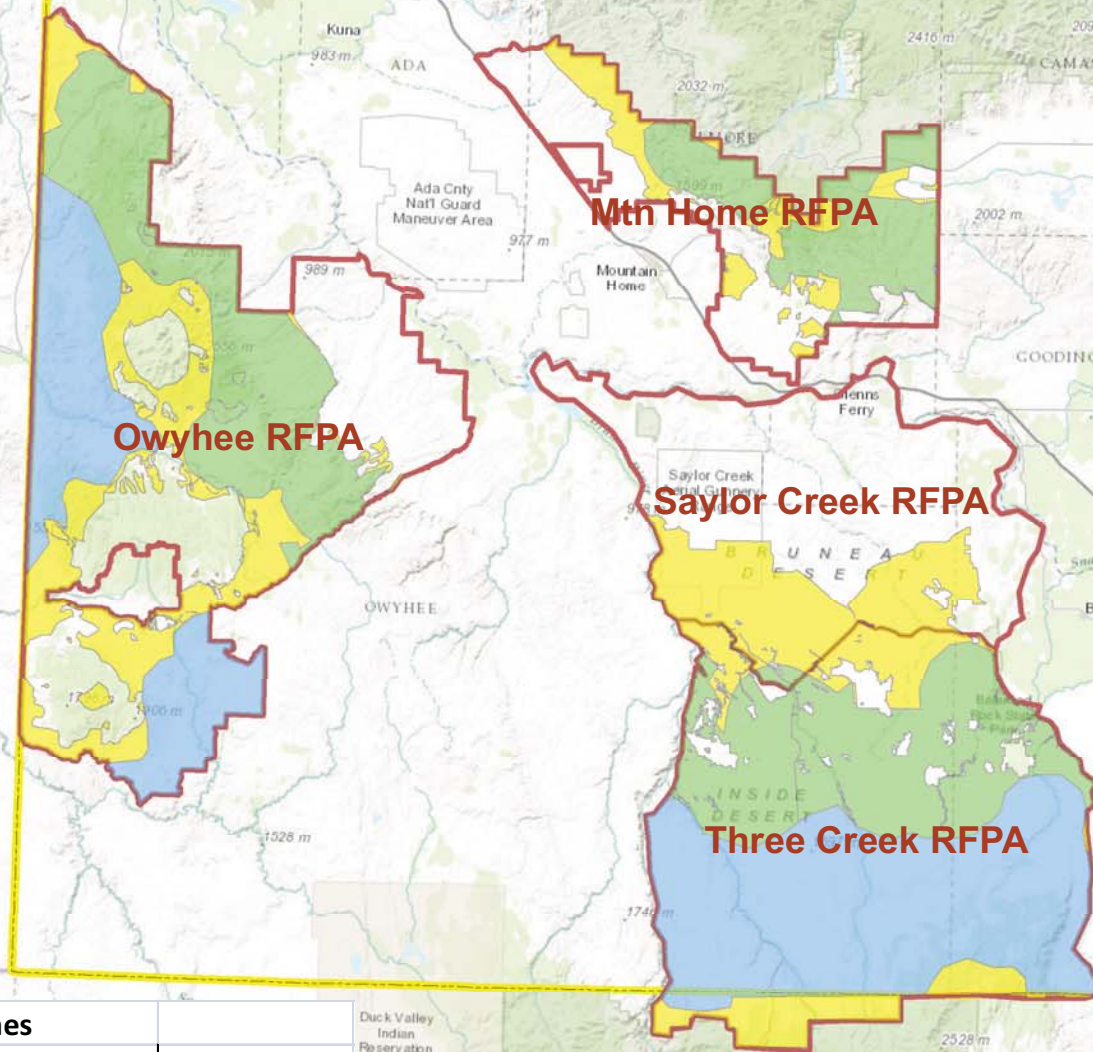
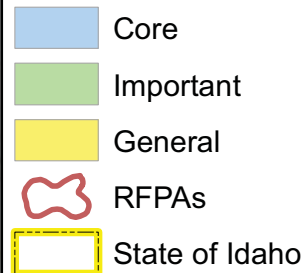


RFPA	BLM	USFS	BOR	HSTRCWTR	MIL	NPS	OTHER	PRIVATE	STATE	STATE_FG	STATE_PR	Grand Total
Mtn Home	239,717	6	1,732					167,294	45,063	510		454,321
Owyhee	951,570		1,129	100				249,389	140,374			1,342,563
Saylor Creek	437,507		5,837	1,229	103,401	1,604		125,590	23,897	70	5,262	704,397
Three Creek	943,014				11,131		160	120,666	55,748			1,130,719
Total Acres	2,571,809	6	8,697	1,329	114,532	1,604	160	662,940	265,082	579	5,262	3,632,000

Rangeland Fire Protection Association

Sage Grouse Management Zones

Conservation Areas



RPFA	Management Zones			Total Habitat
	Core	General	Important	
Mtn Home	240	88,855	179,093	269,444
Owyhee	307,188	275,534	357,945	940,667
Saylor Creek		192,562	5,352	197,915
Three Creek	565,531	148,089	365,125	1,078,745
Total Acres	872,958	705,040	907,515	2,486,771

Proposed RFPA Locations

May 2013

