

Rangeland Fire Protection Associations in Idaho

There were six active Rangeland Fire Protection Associations (RFPAs) in Idaho during the 2015 fire season. Five of the RFPAs assisted on thirty fires providing an equivalent total of 120 members. These fires ranged in size from less than a tenth of an acre to the 279,000 acre Soda Fire. They provided local knowledge, equipment, and assisted with fireline construction.

Our annual Idaho RFPA meeting in November was lengthened and invitations were extended further than in the past. We discussed the fire season; shared lessons learned; identified potential issues that need to be addressed; and shared information on additional resources for the RFPAs.

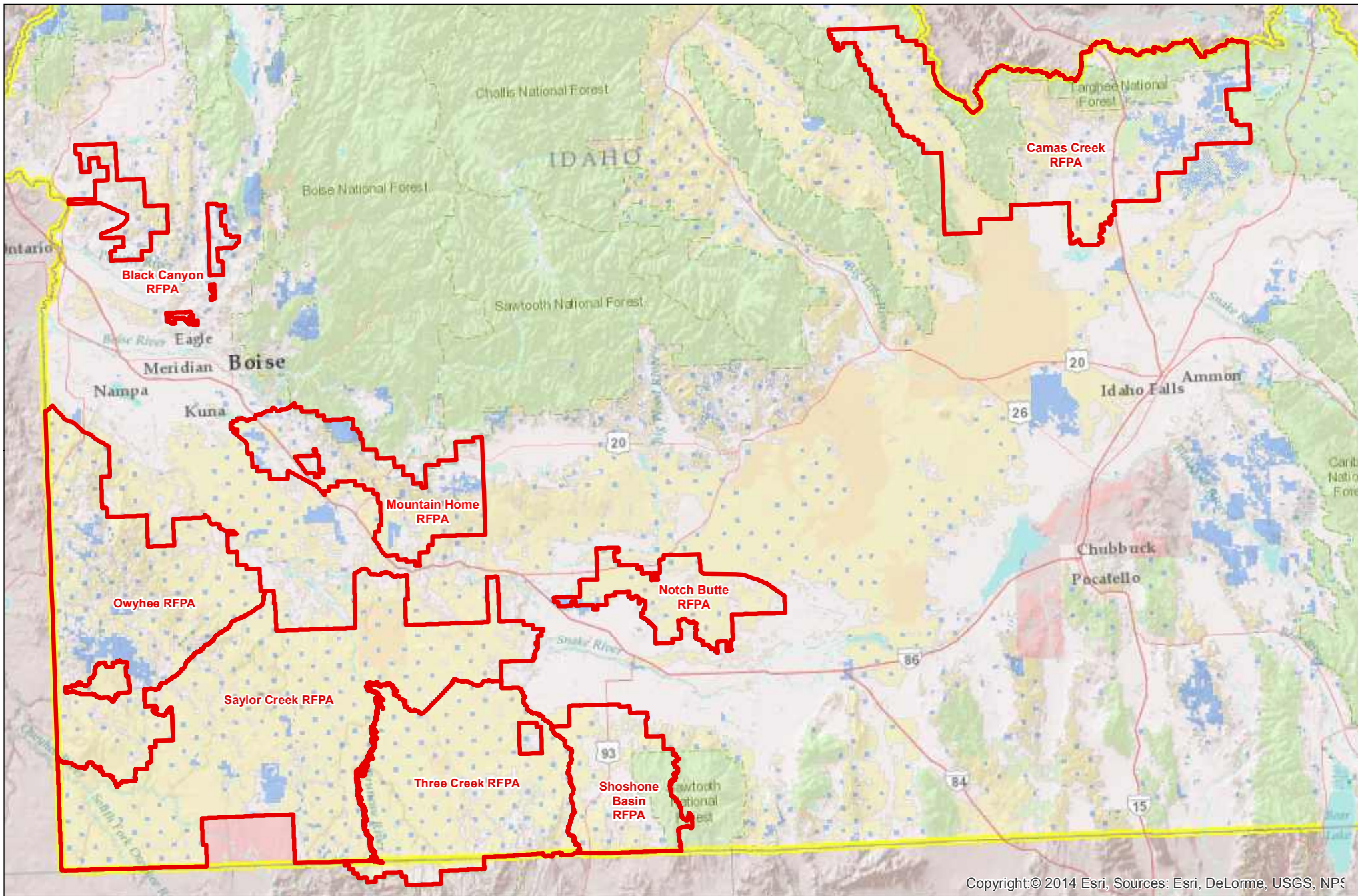
Four Type 6 engines and five slip-in units were distributed to five different RFPAs in April. The equipment was purchased by IDL (using general funds as well as grant funding from the USFWS) or acquired through the Federal Excess Personal Property (FEPP) program. The two temporary mechanics funded in FY16 worked hard to ensure that everything was functioning correctly, and rebuilding or adding components as needed. The RFPAs are responsible to insure, maintain, and fund the ongoing maintenance of the equipment.

Two new RFPAs will be active for this season:

- Notch Butte RFPA, in Jerome and Lincoln counties, has 11 qualified members for this fire season. The Twin Falls District BLM provided the training and we have equipped members with Personal Protective Equipment (PPE) and hand held radios.
- Camas Creek RFPA, in Clark County, has 39 qualified members for this fire season. The Idaho Falls District BLM and the Caribou-Targhee National Forest provided the training and we have equipped members with Personal Protective Equipment (PPE) and hand held radios.

This season there will be approximately 250 RFPA members qualified and current to fight fire. The eight RFPAs combined protect 1.4 million acres of private rangeland that was previously unprotected, as well as providing secondary protection on 6.3 million acres of federal and state land.

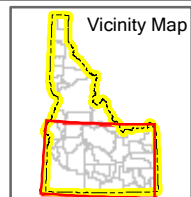
There is one additional area that has recently expressed interest. Discussions have begun to determine if there is a need for the formation of an RFPA in this area.



Copyright:© 2014 Esri, Sources: Esri, DeLorme, USGS, NPS

Legend

- Existing RFPA
- Idaho Boundary
- Bureau of Land Management
- US Forest Service
- Other State Lands
- Other Federal Ownership
- Tribal Lands
- Private



Rangeland Fire Protection Associations

5/24/2016



Map Notes and Data Sources
 IDL Ownership current as of map date
 Ownership current as of 2014
 Current unprotected private land current as of map date

Disclaimer:
 This map has been compiled using the best information available to the Idaho Department of Lands at the time and may be updated and/or revised without notice. In situations where known accuracy and completeness is required, the user has the responsibility to verify the accuracy of the map and the underlying data sources.