

## LEASE FACT SHEET: LEASE OPPORTUNITY

Report Date: 02/24/2022

Lease Number: GR80000937  
IDL Supervisory Area: Eastern Idaho Falls  
IDL Office Contact: Chad Taylor  
IDL Office Phone Number: (208) 525-7167  
Asset Classification: Rangeland  
County: Clark County  
Freemont County

Applications Accepted: 2/24/2022 – 3/24/2022  
Public Auction Registration Deadline: TBD  
Public Auction Start Date/Time: TBD  
Public Auction End Date/Time: TBD  
Public Auction Location: TBD

### EXPIRING LEASE

Lease Number: N/A  
Lease Start Date: N/A  
Lease End Date: N/A

Primary Current Use: Grazing  
Number of Tracts: N/A

### PROPOSED LEASE

Lease Start Date: TBD  
Lease End Date: TBD  
Proposed Term Length: 20 Years  
Access: Restricted – contact area office  
First Year Rent: TBD

Proposed Primary Activity: Grazing  
Commodity Type: Cow/Calf  
Total Proposed Acres: 2,478.94  
Animal Unit Months (AUM): 392  
Water Rights: N/A

Annual Rent Increase: AUM Rate  
Royalty: N/A

Secondary Current Use: N/A  
Proposed Higher or Better Use: Alternative uses may be proposed to IDL

Proposed Special Terms & Conditions: See Lease Draft

Related Instruments: N/A

### EXHIBIT A: LEGAL DESCRIPTION

DISCLAIMER: The Idaho Department of Lands (IDL) provides this product for informational purposes only. Consumers of this information should review or consult the primary data and information sources to ascertain the viability of the information for their purposes. IDL provides these data in good faith and in no event shall be liable for any incorrect information, result or analysis, any lost profits and special, indirect or consequential damages to any party, arising out of or in connection with the use or the inability to use the data or the product provided. IDL makes this data and product available as a convenience to the public, and for no other purpose. IDL reserves the right to change or revise published data and/or the product at any time.

TWN	RNG	SEC	Legal Description	County	Endow	Acres	Grazing Acres	PHMA Acres	IHMA Acres	AUMs
011N	040E	3	SEnw, NWsw, S2sw	Fremont County	PS	160	160	0	160	27
011N	039E	16	All	Clark County	PS	640	640	631.2	8.8	85
012N	040E	34	E2, E2W2	Fremont County	PS	480	480	0	480	80
011N	040E	9	NE, E2NW	Fremont County	PS	240	240	0	240	40
011N	040E	10	N2NW, SWNW	Fremont County	PS	120	120	0	120	20
011N	040E	4	Gov Lots 2-3, SWNE, SEw, NEsw, SE	Fremont County	PS	358.94	358.94	0	358.94	60
012N	040E	28	E2, E2W2	Fremont County	PS	480	480	0	480	80
						2478.94	2478.94	631.2	1847.74	392

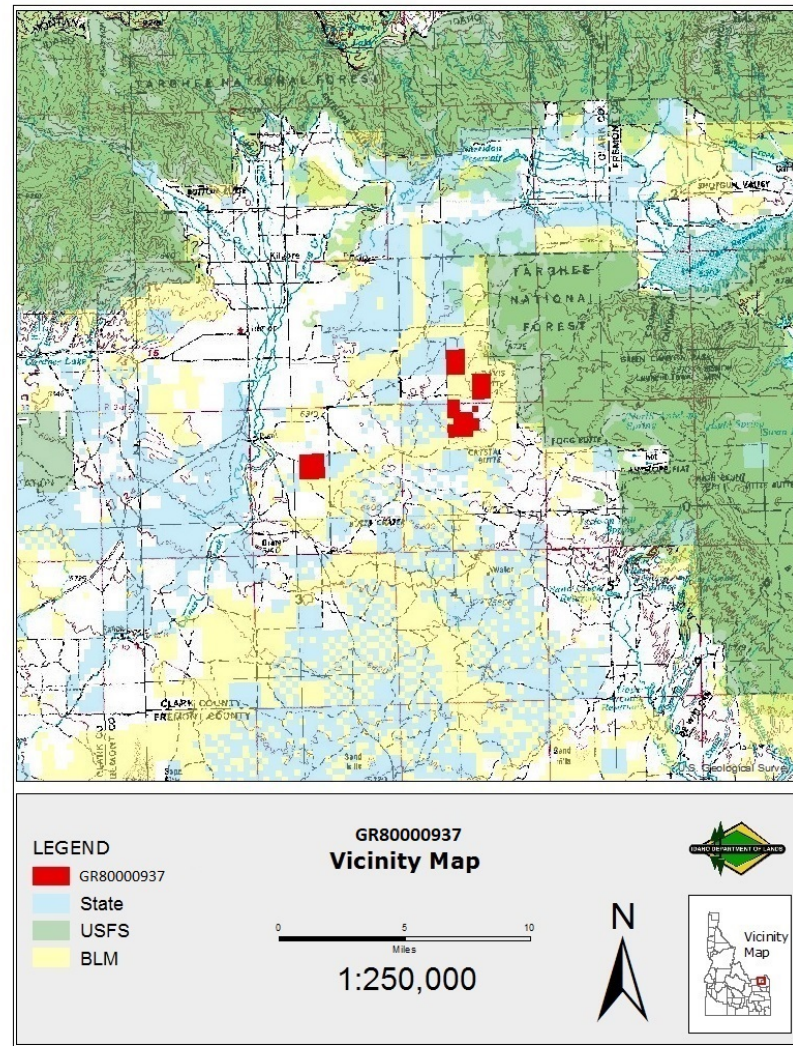
## EXHIBIT B: EXISTING IMPROVEMENTS

**DISCLAIMER:** The Idaho Department of Lands (IDL) provides this product for informational purposes only. Consumers of this information should review or consult the primary data and information sources to ascertain the viability of the information for their purposes. IDL provides these data in good faith and in no event shall be liable for any incorrect information, result or analysis, any lost profits and special, indirect or consequential damages to any party, arising out of or in connection with the use or the inability to use the data or the product provided. IDL makes this data and product available as a convenience to the public, and for no other purpose. IDL reserves the right to change or revise published data and/or the product at any time.

**IMPROVEMENT****OWNERSHIP****ADDITIONAL BILLED USE**

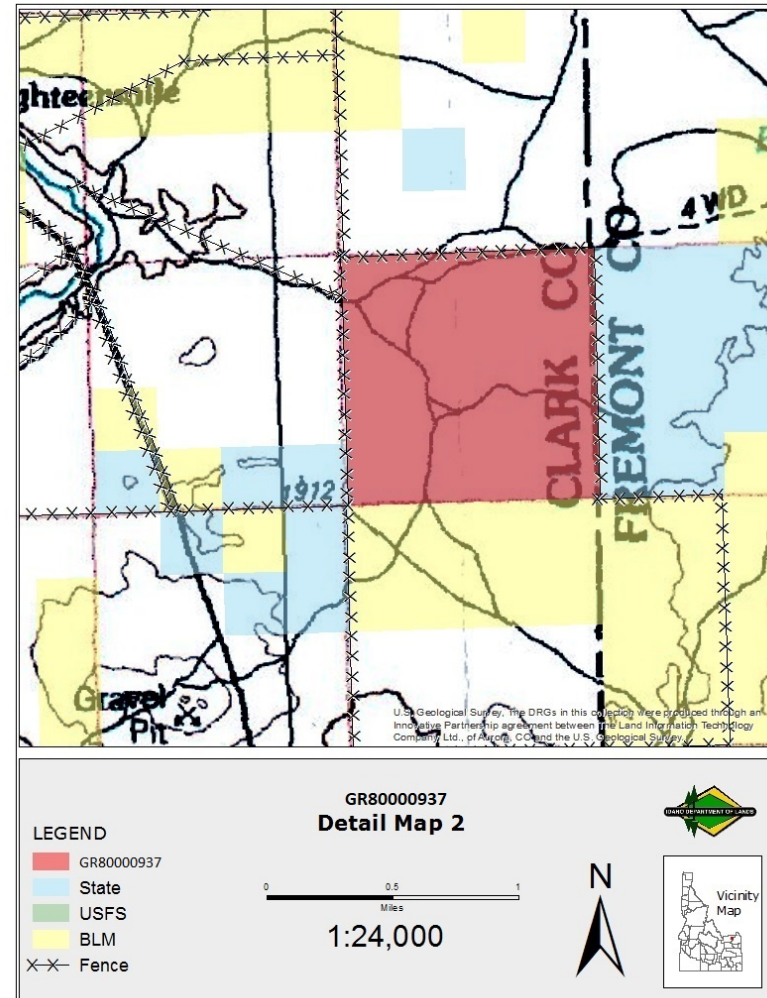
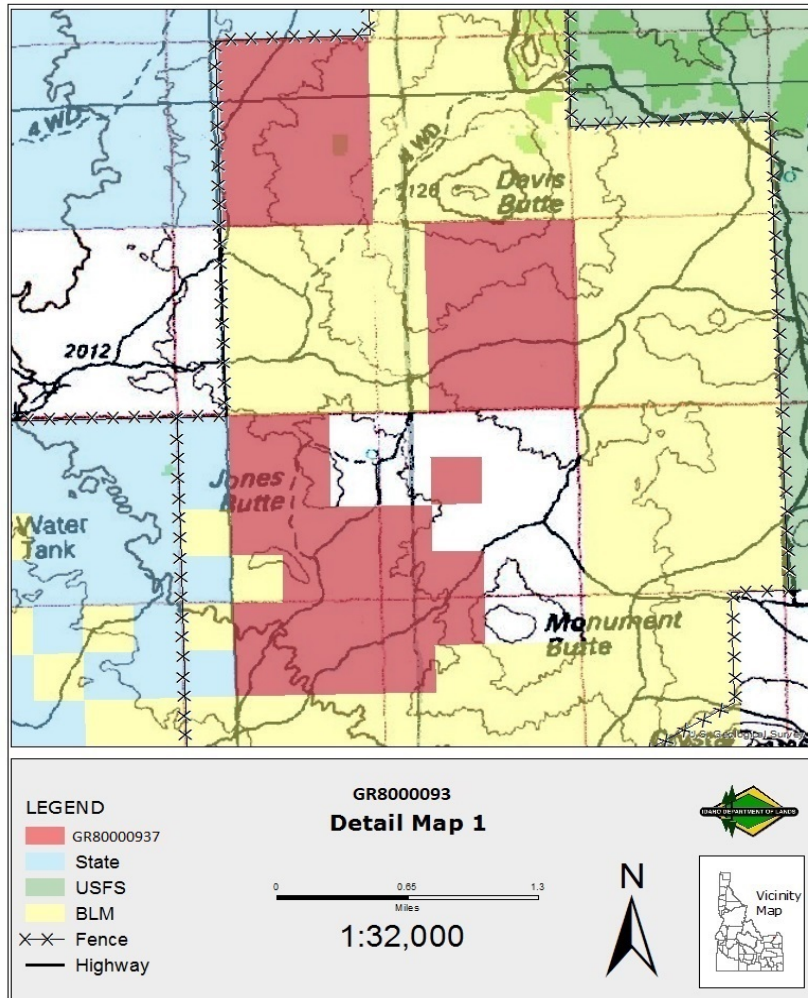

**DISCLAIMER:** The Idaho Department of Lands (IDL) provides this product for informational purposes only. Consumers of this information should review or consult the primary data and information sources to ascertain the viability of the information for their purposes. IDL provides these data in good faith and in no event shall be liable for any incorrect information, result or analysis, any lost profits and special, indirect or consequential damages to any party, arising out of or in connection with the use or the inability to use the data or the product provided. IDL makes this data and product available as a convenience to the public, and for no other purpose. IDL reserves the right to change or revise published data and/or the product at any time.

## EXHIBIT C: VICINITY MAP



**DISCLAIMER:** The Idaho Department of Lands (IDL) provides this product for informational purposes only. Consumers of this information should review or consult the primary data and information sources to ascertain the viability of the information for their purposes. IDL provides these data in good faith and in no event shall be liable for any incorrect information, result or analysis, any lost profits and special, indirect or consequential damages to any party, arising out of or in connection with the use or the inability to use the data or the product provided. IDL makes this data and product available as a convenience to the public, and for no other purpose. IDL reserves the right to change or revise published data and/or the product at any time.

## EXHIBIT D: LEASE MAP



**DISCLAIMER:** The Idaho Department of Lands (IDL) provides this product for informational purposes only. Consumers of this information should review or consult the primary data and information sources to ascertain the viability of the information for their purposes. IDL provides these data in good faith and in no event shall be liable for any incorrect information, result or analysis, any lost profits and special, indirect or consequential damages to any party, arising out of or in connection with the use or the inability to use the data or the product provided. IDL makes this data and product available as a convenience to the public, and for no other purpose. IDL reserves the right to change or revise published data and/or the product at any time.

**DISCLAIMER:** The Idaho Department of Lands (IDL) provides this product for informational purposes only. Consumers of this information should review or consult the primary data and information sources to ascertain the viability of the information for their purposes. IDL provides these data in good faith and in no event shall be liable for any incorrect information, result or analysis, any lost profits and special, indirect or consequential damages to any party, arising out of or in connection with the use or the inability to use the data or the product provided. IDL makes this data and product available as a convenience to the public, and for no other purpose. IDL reserves the right to change or revise published data and/or the product at any time.