

LEASE FACT SHEET: LEASE OPPORTUNITY

Report Date: 04/04/2022

Lease Number:	GR80000936	Applications Accepted:	04/04/2022 – 05/04/2022
IDL Supervisory Area:	Eastern Idaho Falls	Public Auction Registration Deadline:	TBD
IDL Office Contact:	Chad Taylor	Public Auction Start Date/Time:	TBD
IDL Office Phone Number:	(208) 525-7167	Public Auction End Date/Time:	TBD
Asset Classification:	Rangeland	Public Auction Location:	TBD
County:	Lemhi County		

EXPIRING LEASE

Lease Number:	N/A	Primary Current Use:	Grazing
Lease Start Date:	N/A	Number of Tracts:	N/A
Lease End Date:	N/A		

PROPOSED LEASE

Lease Start Date:	May 15, 2022	Proposed Primary Activity:	Grazing
Lease End Date:	12/31/2041	Commodity Type:	Cow/Calf
Proposed Term Length:	20 Yrs	Total Proposed Acres:	480
Access:	YES	Animal Unit Months (AUM):	50
First Year Rent:	TBD	Water Rights:	N/A
Annual Rent Increase:	AUM Rate	Secondary Current Use:	N/A
Royalty:	N/A	Proposed Higher or Better Use:	Alternative uses may be proposed to IDL
Proposed Special Terms & Conditions:	See Lease Draft	Related Instruments:	N/A

EXHIBIT A: LEGAL DESCRIPTION

DISCLAIMER: The Idaho Department of Lands (IDL) provides this product for informational purposes only. Consumers of this information should review or consult the primary data and information sources to ascertain the viability of the information for their purposes. IDL provides these data in good faith and in no event shall be liable for any incorrect information, result or analysis, any lost profits and special, indirect or consequential damages to any party, arising out of or in connection with the use or the inability to use the data or the product provided. IDL makes this data and product available as a convenience to the public, and for no other purpose. IDL reserves the right to change or revise published data and/or the product at any time.

TWN	RNG	SEC	Legal Description	County	Endow	Acres	Grazing Acres	Dry Acres	Irrigated Acres	CRP Acres	Waste Acres	PHMA Acres	IHMA Acres	AUMs
19N	23E	16	NE, S2	Lemhi County	PS	480	480	0	0	0	0	0	334.12	50

EXHIBIT B: EXISTING IMPROVEMENTS

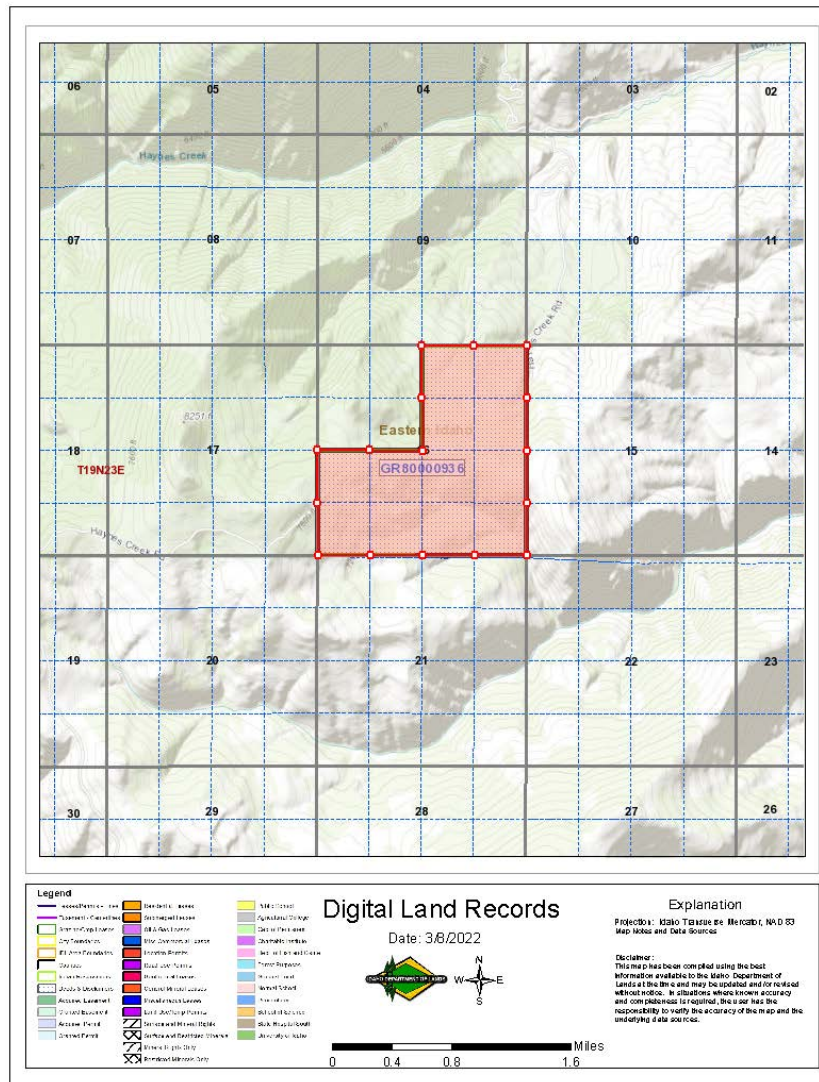
DISCLAIMER: The Idaho Department of Lands (IDL) provides this product for informational purposes only. Consumers of this information should review or consult the primary data and information sources to ascertain the viability of the information for their purposes. IDL provides these data in good faith and in no event shall be liable for any incorrect information, result or analysis, any lost profits and special, indirect or consequential damages to any party, arising out of or in connection with the use or the inability to use the data or the product provided. IDL makes this data and product available as a convenience to the public, and for no other purpose. IDL reserves the right to change or revise published data and/or the product at any time.

IMPROVEMENT**OWNERSHIP****ADDITIONAL BILLED USE**

IMPROVEMENT	OWNERSHIP	ADDITIONAL BILLED USE

DISCLAIMER: The Idaho Department of Lands (IDL) provides this product for informational purposes only. Consumers of this information should review or consult the primary data and information sources to ascertain the viability of the information for their purposes. IDL provides these data in good faith and in no event shall be liable for any incorrect information, result or analysis, any lost profits and special, indirect or consequential damages to any party, arising out of or in connection with the use or the inability to use the data or the product provided. IDL makes this data and product available as a convenience to the public, and for no other purpose. IDL reserves the right to change or revise published data and/or the product at any time.

EXHIBIT C: VICINITY MAP



DISCLAIMER: The Idaho Department of Lands (IDL) provides this product for informational purposes only. Consumers of this information should review or consult the primary data and information sources to ascertain the viability of the information for their purposes. IDL provides these data in good faith and in no event shall be liable for any incorrect information, result or analysis, any lost profits and special, indirect or consequential damages to any party, arising out of or in connection with the use or the inability to use the data or the product provided. IDL makes this data and product available as a convenience to the public, and for no other purpose. IDL reserves the right to change or revise published data and/or the product at any time.