

# FISCAL YEAR 2022 TIMBER SALES PLAN



# IDAHO DEPARTMENT OF LANDS FY22 TIMBER SALE PLAN

July 1, 2021 – June 30, 2022

## TABLE OF CONTENTS

Types of Sales .....	3
Supervisory Area Offices .....	4
Administrative Rules and Timber Sale Financing & Purchasing .....	6
Priest Lake.....	7-9
Pend Oreille Lake .....	10-12
Mica.....	13
St. Joe .....	14-17
Clearwater .....	18-21
Ponderosa .....	22-24
Maggie Creek .....	25-27
Payette Lakes.....	28-30
Southwest.....	31
Eastern .....	32-33

# IDAHO DEPARTMENT OF LANDS FY22 TIMBER SALE PLAN

July 1, 2021 – June 30, 2022

## Types of Sales

### Timber Sales

Timber sales contain an estimated volume of at least 1,000 MBF and exceed the net appraised stumpage value for salvage sales established by the state board of land commissioners. Timber sales are designed to produce maximum stumpage returns to the endowment funds consistent with prudent long-term management practices.

Timber sales are advertised for four weeks in a newspaper in the county where the sale is located, and are sold at public auction.

### Direct Sales

Direct Sale net appraised stumpage value does not exceed the maximum value established by the State Board of Land Commissioners. This type of sale is to be used to harvest isolated or by-passed parcels of timber of insufficient value and volume to justify a salvage sale. The direct sale is not used where two or more potential purchasers may be interested in bidding on the forest products offered for sale.

The direct sale of forest product stumpage is made without advertisement as authorized by the Director.

# IDAHO DEPARTMENT OF LANDS FY22 TIMBER SALE PLAN

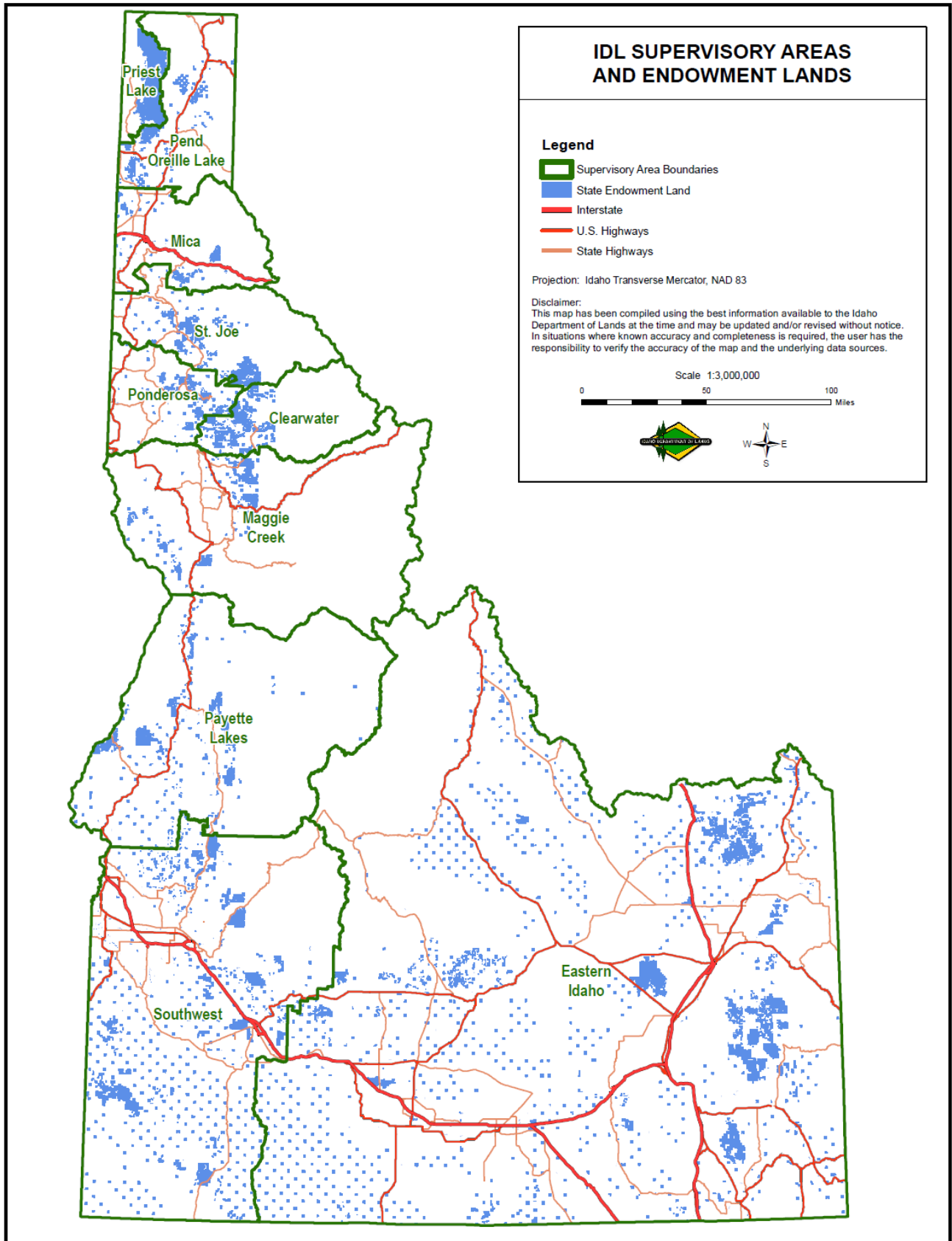
July 1, 2021 – June 30, 2022

## Supervisory Area Offices

<b>SUPERVISORY AREA</b>	<b>AREA SUPERVISOR</b>	<b>PHONE</b>
<b>Priest Lake</b> 4053 Cavanaugh Bay Road Coolin, ID 83821	Dan Brown	(208) 443-2516
<b>Pend Oreille Lake</b> 2550 Highway 2 West Sandpoint, ID 83864	Tom Fleer	(208) 263-5104
<b>Mica</b> 3258 W. Industrial Loop Coeur d'Alene, ID 83815	Erik Sjoquist	(208) 769-1577
<b>St. Joe</b> 1806 Main Avenue St. Maries, ID 83861	Rick Arcano	(208) 245-4551
<b>Ponderosa</b> 3130 Highway 3 Deary, ID 83823	Chris Tretter	(208) 877-1121
<b>Clearwater</b> 10230 Highway 12 Orofino, ID 83544	Jay Sila	(208) 476-4587
<b>Maggie Creek</b> 913 Third Street Kamiah ID 83536	Dave Schwartz	(208) 935-2141
<b>Payette Lakes</b> 555 Deinhard Lane McCall, ID 83638	Scott Corkill	(208) 634-7125
<b>Southwest/South Central</b> 8355 W. State Street Boise, ID 83703	Bob Pietras	(208) 334-3488
<b>Eastern Idaho</b> 3563 Ririe Highway Idaho Falls, ID 83401	Pat Brown	(208) 525-7167

# IDAHO DEPARTMENT OF LANDS FY22 TIMBER SALE PLAN

July 1, 2021 – June 30, 2022



## IDAHO DEPARTMENT OF LANDS FY22 TIMBER SALE PLAN

July 1, 2021 – June 30, 2022

### Administrative Rules and Purchaser Sale Requirements

*Links to detailed information on the internet are provided below.*

Administrative Rules of the Department of Lands

[20.02.14 – Selling Forest Products on State-Owned Endowment Lands](#)

For information regarding timber sale procedures, bidding procedures, bonding requirements and insurance requirements, click on the link below.

[Purchaser Sale Requirements](#)



# IDAHO DEPARTMENT OF LANDS FY22 TIMBER SALE PLAN

July 1, 2021 – June 30, 2022

Priest Lake  
Supervisory Area

SALE NO.	SALE NAME	SUBDIVISION	SEC	TWN/RNG	APPROXIMATE	
					ACREAGE	VOLUME
1	Cedar Gap	Pts. Lots 1 & 2, Pts. SWNE, Pts. NESW, Pts. NWSE	2	63N/04W	49	1,650 MBF 700 Poles
		Pts. SESW	11	63N/04W		
		Pts. E2NW, Pts. N2SW	14	63N/04W		
		Pts. NENE	34	63N/04W		
		Pts. W2NW	35	63N/04W		
		Pts. S2SE	35	64N/04W		

Estimated Auction: Summer, 2021  
 Location: 20-25 miles north of Coolin, Idaho  
 Drainages: Bugle and Caribou  
 Class I streams: Yes  
 Class II streams: Yes  
 Silvicultural Prescription: Clearcut  
 Harvest System: Ground based  
 Developments: Construct 0.5 mile of excavated trail  
 Reconstruct 0.5 mile of spur road

2	Cooks OSR	Pts. SENW, Pts. SW, Pts. W2SE	2	62N 04W	805	2,900 MBF
		Pts. Lots 1-2, Pts. S2NE, Pts. N2SE	3	62N 04W		
		Pts. Lot 4, Pts. SWNW	5	63N 04W		
		Pts. Lots 1-3, 5,6, Pts. S2NE, Pts. SENW, Pts. NESW, Pts. NWSE	6	63N 04W		
		Pts. W2NE, Pts. SENE, Pts. E2NW	9	63N 04W		
		Pts. NESW, Pts. N2SE	9	63N 04W		
		Pts. SWNW, Pts. NWSW	10	63N 04W		
		Pts. S2SW, Pts. SWSE	12	63N 04W		
		Pts. W2NE, Pts. NW, Pts. SW	13	63N 04W		
		Pts. E2SW, Pts. S2SE	14	63N 04W		
		Pts. N2NE, Pts. SWNE, Pts. E2NW	23	63N 04W		
		Pts. NWNW	24	63N 04W		
		Pts. NESE	31	64N 04W		
		Pts. SWSW	32	64N 04W		

Estimated Auction: Summer, 2021  
 Location: 26 miles north to Coolin, Idaho  
 Drainages: Caribou Creek, Bugle Creek, Trapper Creek  
 Class I streams: No  
 Class II streams: Yes  
 Silvicultural Prescription: Overstory Removal  
 Harvest System: Ground based  
 Developments: Reconstruct 3.0 miles of spur road  
 Proposed rock pit development located in Unit 1.

3	Rusty Caribou Ton	Pts. S2NE, Pts. SESW, Pts. N2SE, Pts. SWSE	23	63N/04W	120	1,350 MBF 8,152 Tons
		Pts. E2NE, Pts. E2SW, Pts. NWSE	34	63N/04W		
		Pts. Lot 4, Pts. SWNW, Pts. W2SW	3	62N/04W		
		Pts. Lots 3 & 4, Pts. S2NW, Pts. N2SW, Pts. SESW	4	62N/04W		

Estimated Auction: Summer, 2021  
 Location: 19-22 miles north of Coolin, Idaho  
 Drainages: Caribou and Priest Lake  
 Class I streams: Yes  
 Class II streams: Yes  
 Silvicultural Prescriptions: Clearcut, Shelterwood, Seed-tree & Selection  
 Harvest System: Ground based (CTL)  
 Developments: Construct 0.2 mile of spur road, Reconstruct 0.7 mile of spur road

## IDAHO DEPARTMENT OF LANDS FY22 TIMBER SALE PLAN

July 1, 2021 – June 30, 2022

### Priest Lake Supervisory Area

<b>4</b>	<b>Hunting Camp OSR</b>	Pts. Lots 3 and 4	4	60N 03W	910	4,500 MBF
		Pts. Lots 1, 2, and 3	5	60N 03W		
		Pts. NE, Pts. NENW	7	60N 03W		
		Pts. SWNE, Pts. S2NW, Pts. S2	8	60N 03W		
		Pts. Lots 1, 2, 3, and 4, Pts. S2NE, Pts. S2NW, Pts. SW, Pts. N2SE	1	60N 04W		
		Pts. S2NE, Pts. SE	2	60N 04W		
		Pts. N2, Pts. NESW, Pts. N2SE	11	60N 04W		
		Pts. SENE, Pts. SE	32	61N 03W		
		Pts. SWSW	33	61N 03W		

Estimated Auction: Fall, 2021

Location: 9.0 miles northeast to Coolin, Idaho

Drainage: Hunt Creek

Class I streams: No

Class II streams: Yes

Silvicultural Prescriptions: Seed-tree, Overstory Removal

Harvest System: Ground based and cable yarding

Developments: Reconstruct 4.0 miles of secondary road  
Reconstruct 1.0 mile of spur road

<b>5</b>	<b>Wildcat Cedar</b>	Pts. S2SW, Pts. S2SE	13	60N/04W	243	3,600 MBF 1,000 Poles
		Pts. Govt. Lot 4, Pts. NESW, Pts. SE	23	60N/04W		
		Pts. N2, Pts. NESW, Pts. NWSE	24	60N/04W		
		Pts. Govt. Lot 1	26	60N/04W		

Estimated Auction: Fall, 2021

Location: 4.0 miles northeast to Coolin, Idaho

Drainage: Cougar Creek

Class I streams: Yes

Class II streams: Yes

Silvicultural Prescriptions: Selection, Seed-tree, Overstory Removal

Harvest System: Ground based and cable yarding

Developments: Construct 0.2 mile of spur road  
Reconstruct 1.0 mile of spur road

<b>6</b>	<b>Leftover Lost</b>	Pts. NWNW	17	59N/03W	237	3,500 MBF
		Pts. Lots 3 & 4, Pts. NE, Pts. SENW, Pts. SW, Pts. W2SE	18	59N/03W		
		Pts. Lots 1 & 2, Pts. E2NW	19	59N/03W		
		Pts. NESE, Pts. S2SE, Pts. SESW	13	59N/04W		
		Pts. N2NE, Pts. N2NW	24	59N/04W		

Estimated Auction: Summer, 2021

Location: 3.0 miles southeast to Coolin, Idaho

Drainage: Lost Creek

Class I streams: Yes

Class II streams: Yes

Silvicultural Prescriptions: Shelterwood, Seed-tree, Clearcut

Harvest System: Ground based and cable yarding

Developments: Construct 2.0 miles of spur road  
Reconstruct 3.0 miles of secondary road



## IDAHO DEPARTMENT OF LANDS FY22 TIMBER SALE PLAN

July 1, 2021 – June 30, 2022

Priest Lake  
Supervisory Area

SALE NO.	SALE NAME	SUBDIVISION	SEC	TWN/RNG	APPROXIMATE	
					ACREAGE	VOLUME
7	Mineral Flats	Pts. SWSW, Pts. S2SE	21	59N/04W	646	2,050 MBF
		Pts. NESW, Pts. SWSW	23	59N/04W		
		Pts. W2	26	59N/04W		
		Pts. NENE, Pts. W2NW	27	59N/04W		
		Pts. N2, Pts. NESW, Pts. NESE	28	59N/04W		
		Pts. NENE, Pts. N2SE	29	59N/04W		

Estimated Auction: Summer, 2021  
 Location: 2.0 miles south to Coolin, Idaho  
 Drainage: Lower Priest River  
 Class I streams: No  
 Class II streams: No  
 Silvicultural Prescriptions: Shelterwood, Seed-tree, Clearcut  
 Harvest System: Ground based  
 Developments: Open 2.0 miles of spur road  
                   Reconstruct 0.5 mile of spur road

8	Tarlac Skyline Cedar	Pts. E2SW, Pts. SE	9	58N/03W	226	2,850 MBF 1,000 Poles
		Pts. W2SW, Pts. SESW	10	58N/03W		
		Pts. N2NW	15	58N/03W		
		Pts. NE, Pts. E2NW, Pts. E2SW	16	58N/03W		
		Pts. W2SE, Pts. NESE	16	58N/03W		

Estimated Auction: Spring, 2021  
 Location: 10.0 miles southeast to Coolin, Idaho  
 Drainages: Middle Fork of the East River and Tarlac Creek  
 Class I streams: Yes  
 Class II streams: Yes  
 Silvicultural Prescriptions: Seed-tree, Overstory Removal  
 Harvest System: Ground based and cable yarding  
 Developments: Construct 1.0 mile of spur road  
                   Reconstruct 1.0 mile of spur road  
                   Reconstruct 4.0 miles of main road

9	Middle Fork DP	Pts. Lots 2-4, Pts. NESW	7	58N/03W	121	1,600 MBF 400 Poles
		Pts. W2NE, Pts. E2NW, Pts. E2SW, Pts. SE	12	58N/04W		

Estimated Auction: Winter, 2021  
 Location: 7.0 miles southeast to Coolin, Idaho  
 Drainages: Middle Fork East River, Waters Creek  
 Class I streams: No  
 Class II streams: Yes  
 Silvicultural Prescriptions: Overstory Removal, Clearcut  
 Harvest System: Ground based and cable yarding  
 Developments: Reconstruct 2.0 miles of spur road  
                   Construct 0.2 mile of spur road

<b>Additional small volume sales:</b>		
---------------------------------------	--	--

<b>TOTALS:</b>	3,357	24,000 MBF 3,100 Poles 8,152 Tons
----------------	-------	---

## IDAHO DEPARTMENT OF LANDS FY22 TIMBER SALE PLAN

July 1, 2021 – June 30, 2022

Pend Oreille Lake  
Supervisory Area

SALE NO.	SALE NAME	SUBDIVISION	SEC	TWN/RNG	APPROXIMATE	
					ACREAGE	VOLUME
1	<b>Mirkwood Cedar</b>	Pts. SE	26	60N/01E	93	3,360 MBF 1,300 Poles

Estimated Auction: Fall, 2021  
 Location: 5.0 miles southeast of Naples, Idaho  
 Drainage: North Fork Grouse Creek  
 Class I streams: Yes  
 Class II streams: Yes  
 Silvicultural Prescriptions: Clearcut, Seed-tree  
 Harvest System: Ground based and cable yarding  
 Developments: Open 6.0 miles of secondary road  
                   Open 2.0 miles of spur road  
                   Construct 0.5 mile of spur road

2	<b>Montucky</b>	Pts.	10	62N/02E	200	1,400 MBF
---	-----------------	------	----	---------	-----	-----------

Estimated Auction: Winter, 2022  
 Location: 6.0 miles east of Moyie Springs, Idaho  
 Drainage: Curley Creek  
 Class I streams: No  
 Class II streams: Yes  
 Silvicultural Prescription: Overstory Removal  
 Harvest System: Ground based and cable yarding  
 Developments: Open 4.0 miles of spur road  
                   Reconstruct 1.0 mile of spur road

3	<b>Fish Fins</b>	Pts.	9	55N/03W	210	3,940 MBF
		Pts.	16	55N/03W		

Estimated Auction: Fall, 2021  
 Location: 5.0 miles southwest of Westmond, Idaho  
 Drainage(s): Fish Creek  
 Class I streams: Yes  
 Class II streams: Yes  
 Silvicultural Prescriptions: Seed-tree, Clearcut  
 Harvest System: Ground based and cable yarding  
 Development(s): Open 10.0 miles of spur road  
                   Construct 3.0 miles of spur road

4	<b>Lightning</b>	Pts. S2NW, Pts. NWSW	4	58N/01E	82	2,300 MBF
---	------------------	----------------------	---	---------	----	-----------

Estimated Auction: Spring, 2022  
 Location: 7.0 miles northeast of Kootenai, Idaho  
 Drainage: Gold Creek  
 Class I streams: No  
 Class II streams: Yes  
 Silvicultural Prescription: Clearcut  
 Harvest System: Ground based  
 Developments: Open 6.0 miles of spur road

## IDAHO DEPARTMENT OF LANDS FY22 TIMBER SALE PLAN

July 1, 2021 – June 30, 2022

Pend Oreille Lake  
Supervisory Area

<b>5</b>	<b>Falling Color</b>	Pts.	10	57N/04W	135	3,000 MBF
		Pts.	11	57N/04W		
		Pts.	12	57N/04W		
		Pts.	15	57N/04W		

Estimated Auction: Spring, 2022  
 Location: 10.0 miles northeast of Priest River, Idaho  
 Drainage: Ranger Creek  
 Class I streams: No  
 Class II streams: Yes  
 Silvicultural Prescriptions: Overstory Removal, Seed-tree  
 Harvest System: Ground based and cable yarding  
 Developments: Open 5.0 miles of secondary road  
 Reconstruct 2.0 miles of spur road

<b>6</b>	<b>Foxy Forest</b>	Pts.	31	58N/03W	190	4,200 MBF
		Pts.	35	58N/04W		
		Pts.	36	58N/04W		

Estimated Auction: Summer, 2021  
 Location: 12.0 miles northeast of Priest River, Idaho  
 Drainage: Fox Creek  
 Class I streams: No  
 Class II streams: Yes  
 Silvicultural Prescriptions: Seed-tree, Overstory Removal  
 Harvest System: Ground based and cable yarding  
 Developments: Reconstruct 6.5 miles of secondary road  
 Open 4.0 miles of spur road

<b>7</b>	<b>Forgotten Wood</b>	Pts.	18	61N/01W	255	4,000 MBF
----------	-----------------------	------	----	---------	-----	-----------

Estimated Auction: Summer, 2021  
 Location: 7.0 miles northwest of Naples, Idaho  
 Drainage: Ruby Creek  
 Class I streams: Yes  
 Class II streams: Yes  
 Silvicultural Prescriptions: Clearcut, Seed-tree  
 Harvest System: Ground based and cable yarding  
 Developments: Reconstruct 1.1 miles of secondary road  
 Reconstruct 3.8 miles of spur road  
 Construct 0.8 mile of spur road

<b>8</b>	<b>South Slope Pine</b>	Pts.	25	55N/05W	180	5,000 MBF
		Pts.	26	55N/05W		

Estimated Auction: Summer, 2021  
 Location: 7.0 miles south of Priest River, Idaho  
 Drainage: Curtis Creek  
 Class I streams: Yes  
 Class II streams: Yes  
 Silvicultural Prescriptions: Clearcut, Seed-tree  
 Harvest System: Ground based and cable yarding  
 Developments: Construct 0.8 mile of spur road

# IDAHO DEPARTMENT OF LANDS FY22 TIMBER SALE PLAN

July 1, 2021 – June 30, 2022

Pend Oreille Lake  
Supervisory Area

<b>9</b>	<b>Freebob</b>	Pts.	5	56N/05W	300	3,000 MBF
		Pts.	6	56N/05W		

Estimated Auction: Spring, 2022  
 Location: 4.0 miles northwest of Priest River, Idaho  
 Drainage: Saddler Creek  
 Class I streams: Yes  
 Class II streams: Yes  
 Silvicultural Prescriptions: Clearcut, Seed-tree  
 Harvest System: Ground based and cable yarding  
 Developments: Reconstruct 2.5 miles of spur road  
                   Construct 0.5 mile of spur road

<b>Additional small volume sales:</b>	125	800 MBF
---------------------------------------	-----	---------

<b>TOTALS:</b>	1,770	31,000 MBF 1,300 Poles
----------------	-------	---------------------------

## IDAHO DEPARTMENT OF LANDS FY22 TIMBER SALE PLAN

July 1, 2021 – June 30, 2022

Mica  
Supervisory Area

SALE NO.	SALE NAME	SUBDIVISION	SEC	TWN/RNG	APPROXIMATE	
					ACREAGE	VOLUME
1	<b>LOWER HAZENDORF</b>	Pts. NE, Pts. SENW, Pts. NESW, Pts. S2SW, Pts. SE	9	49N/02E	437	6,400 MBF
		Pts. SWNW, Pts. SW, Pts. S2SE	10	49N/02E		
		Pts. N2, Pts. SW, Pts. NWSE, Pts. S2SE	16	49N/02E		
		Pts. N2NE	21	49N/02E		

Estimated Auction: Summer, 2021

Location: 4.0 miles northeast to Pinehurst, Idaho

Drainage: Hazendorf Gulch

Class I streams: Yes

Class II streams: Yes

Silvicultural Prescriptions: Clearcut, Overstory Removal

Harvest System: Ground based and cable yarding

Developments: Construct 2.33 miles of secondary road  
Reconstruct 0.05 mile of secondary road  
Open 20.0 miles of secondary road

2	<b>Deep Miller</b>	Pts. NESW, Pts. N2SE	4	52N/05W	243	6,000 MBF
		Pts. SW, Pts. SWSE	5	52N/05W		
		Pts. SWNE, Pts. NW, Pts. E2SW Pts. W2SE	8	52N/05W		

Estimated Auction: Spring, 2022

Location: 6.5 miles southeast to Rathdrum, Idaho

Drainage: Fish Creek

Class I streams: Yes

Class II streams: Yes

Silvicultural Prescriptions: Clearcut, Seed-tree, Selection

Harvest System: Ground based and cable yarding

Developments: Construct 2.5 miles of spur road  
Open 9.0 miles of main road  
Reconstruct 1.0 mile of spur road

3	<b>Higbee Camp</b>	Pts. Govt. Lots 7 & 8, Pts. E2SE	9	47N/01W	331	5,600 MBF
		Pts. W2SW, Pts. SESW	14	47N/01W		
		Pts. Govt. Lots 1 – 4; Pts. NE; Pts. SENW, Pts. N2SW, Pts. SESW Pts. N2SE, Pts. SWSE	16	47N/01W		

Estimated Auction: Spring, 2022

Location: 8.0 miles north to Rose Lake, Idaho

Drainages: Butler Creek and Latour Creek

Class I streams: Yes

Class II streams: Yes

Silvicultural Prescriptions: Clearcut, Shelterwood, Overstory Removal

Harvest System: Ground based and cable yarding

Developments: Open 9.7 miles of main road  
Open 6.83 miles of spur road  
Construct 0.56 mile of spur road

<b>Additional small volume sales:</b>		
---------------------------------------	--	--

<b>TOTALS:</b>	1,011	18,000 MBF
----------------	-------	------------

## IDAHO DEPARTMENT OF LANDS FY22 TIMBER SALE PLAN

July 1, 2021 – June 30, 2022

St. Joe  
Supervisory Area

SALE NO.	SALE NAME	SUBDIVISION	SEC	TWN/RNG	APPROXIMATE	
					ACREAGE	VOLUME
1	Blowin' Smoke	Pts. SESE	4	43N/01W	393	8,000 MBF
		Pts. W2NE	5	43N/01W		
		Pts. E2	9	43N/01W		
		Pts. NWNE, Pts. NW, Pts. W2SW	10	43N/01W		
		Pts. N2	15	43N/01W		
		Pts. SENE	16	43N/01W		
		Pts. S2	25	43N/01W		
		Pts. W2SE	28	43N/01W		
		Pts. N2	36	43N/01W		
		Pts. NW, Pts. S2	16	44N/01W		
		Pts. S2	26	44N/01W		
		Pts. NE, Pts. NWSE	35	44N/01W		
		Pts. NWNW	36	44N/01W		

Estimated Auction: Spring, 2022

Location: 3.5 miles east to Fernwood, Idaho

Drainages: Tyson Creek, Little Carpenter Creek, North Fork Tyson Creek, Carpenter Creek, West Fork Emerald Creek, and St. Maries River

Class I streams: Yes

Class II streams: Yes

Silvicultural Prescriptions: Shelterwood, Clearcut

Harvest System: Ground based and cable yarding

Developments: Construct 3.0 miles of secondary road  
Reconstruct 3.0 miles of secondary road  
Open 5.0 miles of secondary road

2	Flat Fish	Pts.	25	45N/02W	238	7,020 MBF
		Pts. NWNE, Pts. NENW	36	45N/02W		

Estimated Auction: Spring, 2022

Location: 8.0 miles north to St. Maries, Idaho

Drainage: Unnamed Tributary to Flat Creek

Class I streams: Yes

Class II streams: Yes

Silvicultural Prescriptions: Shelterwood, Clearcut

Harvest System: Ground based and cable yarding

Developments: Open 6.5 miles of secondary road  
Construct 0.28 mile of spur road

3	Garveson Flume	Pts.	16	45N/01E	323	7,290 MBF
---	----------------	------	----	---------	-----	-----------

Estimated Auction: Summer, 2021

Location: 8.0 miles southwest to Santa, Idaho

Drainages: Bond Creek and Garveson Creek

Class I streams: Yes

Class II streams: Yes

Silvicultural Prescriptions: Clearcut, Shelterwood

Harvest System: Ground based and cable yarding

Developments: Open 5.5 miles of secondary road  
Construct 2.2 miles of secondary road

## IDAHO DEPARTMENT OF LANDS FY22 TIMBER SALE PLAN

July 1, 2021 – June 30, 2022

St. Joe  
Supervisory Area

SALE NO.	SALE NAME	SUBDIVISION	SEC	TWN/RNG	APPROXIMATE	
					ACREAGE	VOLUME
4	Hells Gulch	Pts. N2, Pts. SW	36	47N/02W	221	7,140 MBF

Estimated Auction: Summer, 2021  
 Location: 4.5 miles southwest to St. Maries, Idaho  
 Drainages: Thomas Creek and Deep Creek  
 Class I streams: No  
 Class II streams: Yes  
 Silvicultural Prescription: Clearcut  
 Harvest System: Ground based and cable yarding  
 Developments: Open 1.40 miles of secondary road  
                   Reconstruct 0.8 mile of secondary road  
                   Construct 4.05 miles of secondary road

5	Last Elk	Pts. N2NW, Pts. SENW	28	42N/02E	328	10,320 MBF
		Pts. NW, Pts. N2SW, Pts. SE	12	43N/01E		
		Pts. NWNW	20	43N/02E		

Estimated Auction: Fall, 2021  
 Location: 5.0 miles south to Clarkia, Idaho, and 3.5 miles north to Clarkia, Idaho.  
 Drainages: Childs Creek, Staples Creek, Blair Creek, and Cat Spur Creek  
 Class I streams: Yes  
 Class II streams: Yes  
 Silvicultural Prescriptions: Clearcut, Seed-tree, Shelterwood  
 Harvest System: Ground based and cable yarding  
 Developments: Open 17.0 miles of secondary road  
                   Open 2.0 miles of spur road  
                   Construct 2.0 miles of secondary road

6	Loopy Line and Tractor Cedar	Pts. S2NE, Pts. S2NW, Pts. N2SW	28	41N/05E	166	5,400 MBF 70 MBF Cedar Product 2,000 Cedar Poles
		Pts. SWSW, Pts. N2SESW, Pts. N2SE	28	41N/05E		

Estimated Auction: Spring, 2022  
 Location: 20.0 miles northwest to Clarkia, Idaho  
 Drainages: Loop Creek and Larkins Creek  
 Class I streams: No  
 Class II streams: Yes  
 Silvicultural Prescriptions: Clearcut, Shelterwood  
 Harvest System: Ground based and cable yarding  
 Developments: Open 8.0 miles of secondary road  
                   Construct 0.71 miles of secondary road



## IDAHO DEPARTMENT OF LANDS FY22 TIMBER SALE PLAN

July 1, 2021 – June 30, 2022

St. Joe  
Supervisory Area

SALE NO.	SALE NAME	SUBDIVISION	SEC	TWN/RNG	APPROXIMATE	
					ACREAGE	VOLUME
7	<b>Mica South</b>	Pts. E2SE	23	45N/02E	306	7,325 MBF 110 MBF Cedar Product
		Pts. Govt. Lot 2, Pts. SWNE, Pts. Govt. Lot 5	24	45N/02E		
		Pts. SENW, Pts. SW, Pts. Govt. Lot 6	24	45N/02E		
		Pts. W2SE, Pts. Govt. Lot 7	24	45N/02E		

Estimated Auction: Fall, 2021  
 Location: 3.5 miles north to Calder, Idaho  
 Drainage: Mica Creek  
 Class I streams: Yes  
 Class II streams: Yes  
 Silvicultural Prescriptions: Clearcut, Seed-tree  
 Harvest System: Ground based and cable yarding  
 Developments: Open 5.03 miles of secondary road

8	<b>Twisted Cedar</b>	Pts. Govt. Lot 1 & 2, Pts. SWNE	1	41N/04E	180	5,800 MBF 230 MBF Cedar Product 3,000 Cedar Poles
		Pts. Govt. Lot 3 & 4, Pts. S2NW	1	41N/04E		
		Pts. SW	34	42N/04E		
		Pts. S2SW, Pts. NWSE, Pts. S2SE	36	42N/04E		

Estimated Auction: Summer, 2021  
 Location: 15.5 miles northwest to Clarkia, Idaho  
 Drainages: Floodwood Creek, Stanton Creek, and Meadows Creek  
 Class I streams: Yes  
 Class II streams: Yes  
 Silvicultural Prescriptions: Overstory Removal, Seed-tree, Selection  
 Harvest System: Ground based and cable yarding  
 Developments: Construct 0.61 mile of secondary road  
 Open 3.0 miles of secondary road

9	<b>Wilson West</b>	Pts. SW, Pts. W2SE	13	44N/01W	402	8,835 MBF 15 MBF Cedar Product
		Pts. NW	24	44N/01W		
		Pts. W2NE, Pts. NW, Pts. SW, Pts. NWSE	17	44N/01E		
		Pts. NE, Pts. NESW, Pts. SE	18	44N/01E		
		Pts. N2NE, Pts. SENE	19	44N/01E		
		Pts. W2NW	20	44N/01E		

Estimated Auction: Summer, 2021  
 Location: 3.0 miles west to Santa, Idaho  
 Drainages: Renfro Creek, Rock Creek, and Crystal Creek  
 Class I streams: Yes  
 Class II streams: Yes  
 Silvicultural Prescriptions: Clearcut, Seed-tree, Overstory Removal  
 Harvest System: Ground based and cable yarding  
 Developments: Open 4.3 miles of main road  
 Open 13.7 miles of secondary road  
 Construct 0.1 mile of secondary road

## IDAHO DEPARTMENT OF LANDS FY22 TIMBER SALE PLAN

July 1, 2021 – June 30, 2022

St. Joe  
Supervisory Area

SALE NO.	SALE NAME	SUBDIVISION	SEC	TWN/RNG	APPROXIMATE	
					ACREAGE	VOLUME
10	Log Ride	Pts. SE	29	41N/04E	68	2,190 MBF
		Pts. N2NE, Pts. SWNE, Pts. E2NW	32	41N/04E		

Estimated Auction: Fall, 2021  
 Location: 11.0 miles southwest to Elk River, Idaho  
 Drainage: Robinson Creek  
 Class I streams: No  
 Class II streams: Yes  
 Silvicultural Prescription: Clearcut  
 Harvest System: Ground based and cable yarding  
 Developments: Reconstruct 0.31 mile of spur road

11	Jumping Elk	Pts. E2SE	24	45N/01W	342	7,390 MBF
		Pts. NE, Pts. Govt. Lot 3 & 4, Pts. E2SW	19	45N/01E		
		Pts. W2SE, Pts. SESE	19	45N/01E		
		Pts. N2NE, Pts. SWNE	30	45N/01E		
		Pts. Govt. Lot 1, Pts. SENW	30	45N/01E		

Estimated Auction: Spring, 2022  
 Location: 6.0 miles southwest to Santa, Idaho  
 Drainages: Beaver Creek and Garveson Creek  
 Class I streams: Yes  
 Class II streams: Yes  
 Silvicultural Prescriptions: Seed-tree, Shelterwood, Clearcut  
 Harvest System: Ground based and cable yarding  
 Developments: Open 6.2 miles of secondary road  
 Construct 3.0 miles of secondary road

12	Hey Wilson	Pts. W2NE, Pts. NW, Pts. SW, Pts. NWSE	17	44N/01E	76	3,480 MBF 35 MBF Cedar Product
----	------------	--	----	---------	----	-----------------------------------

Estimated Auction: Winter, 2022  
 Location: 4.0 miles west to Santa, Idaho  
 Drainages: Renfro Creek, Rock Creek, and Crystal Creek  
 Class I streams: No  
 Class II streams: Yes  
 Silvicultural Prescription: Clearcut  
 Harvest System: Ground based and cable yarding  
 Developments: Open 6.5 miles of secondary road  
 Construct 0.2 mile of secondary road

<b>Additional small volume sales:</b>	100	300 MBF
---------------------------------------	-----	---------

<b>TOTALS:</b>	3,067 acres	80,490 MBF Sawlog 460 MBF Cedar Products 5,000 Cedar Poles
----------------	-------------	--

## IDAHO DEPARTMENT OF LANDS FY22 TIMBER SALE PLAN

July 1, 2021 – June 30, 2022

Clearwater  
Supervisory Area

SALE NO.	SALE NAME	SUBDIVISION	SEC	TWN/RNG	APPROXIMATE	
					ACREAGE	VOLUME
1	Snake 36	Pts.	36	38N/04E	380	9,000 MBF

Estimated Auction: Spring, 2022  
 Location: 5.0 miles northeast to Headquarters, Idaho  
 Drainage: Snake Creek  
 Class I streams: Yes  
 Class II streams: Yes  
 Silvicultural Prescription: Seed-tree  
 Harvest System: Ground based and cable yarding  
 Developments: Construct 4.4 miles of spur road  
 Open 4.6 miles of spur road

SALE NO.	SALE NAME	SUBDIVISION	SEC	TWN/RNG	APPROXIMATE	
					ACREAGE	VOLUME
2	Quarter Road	Pts. NESW, Pts. S2SW	3	38N/04E	256	3,075 MBF
		Pts. NENE, Pts. S2NE, Pts. SESW, Pts. E2SE	9	38N/04E		
		Pts. N2NW, Pts. SWNW, Pts. NWSW, Pts. S2SW	10	38N/04E		
		Pts. NWNW	15	38N/04E		
		Pts. N2, Pts. NWSW	16	38N/04E		

Estimated Auction: Winter, 2022  
 Location: 6.0 miles east to Headquarters, Idaho  
 Drainage: South Fork Big Creek  
 Class I streams: Yes  
 Class II streams: Yes  
 Silvicultural Prescriptions: Seed-tree, Overstory Removal  
 Harvest System: Ground based and cable yarding  
 Developments: Construct 1.8 miles of spur road  
 Open 3.8 miles of spur road

SALE NO.	SALE NAME	SUBDIVISION	SEC	TWN/RNG	APPROXIMATE	
					ACREAGE	VOLUME
3	Pierce Shanghai OSR	Pts. S2NE, Pts. NESW, Pts. S2SW, Pts. SE	32	37N/06E	130	1,540 MBF

Estimated Auction: Spring, 2022  
 Location: 3.0 miles southwest to Pierce, Idaho  
 Drainage: Pierce Creek  
 Class I streams: Yes  
 Class II streams: Yes  
 Silvicultural Prescription: Overstory Removal  
 Harvest System: Ground based and cable yarding  
 Development: Open 4.0 miles of spur road

## IDAHO DEPARTMENT OF LANDS FY22 TIMBER SALE PLAN

July 1, 2021 – June 30, 2022

Clearwater  
Supervisory Area

SALE NO.	SALE NAME	SUBDIVISION	SEC	TWN/RNG	APPROXIMATE	
					ACREAGE	VOLUME
4	Cougar Track	Pts. S2N2, Pts. SE, Pts. N2SE	16	39N/05E	210	6,060 MBF
		Pts. NWSE, Pts. S2SE	17	39N/05E		

Estimated Auction: Fall, 2021  
 Location: 7.0 miles southeast to Headquarters, Idaho  
 Drainage: Cougar Creek  
 Class I streams: Yes  
 Class II streams: Yes  
 Silvicultural Prescription: Seed-tree,  
 Harvest System: Ground based and cable yarding  
 Developments: Construct 1.0 mile of spur road  
 Reconstruct 1.0 mile of spur road

SALE NO.	SALE NAME	SUBDIVISION	SEC	TWN/RNG	APPROXIMATE	
					ACREAGE	VOLUME
5	Huck Patches OSR	Pts. Govt. Lots 2-7, Pts. SENW, Pts. NESW	6	36N/03E	590	1,555 MBF
		Pts. Govt. Lot 4, Pts. SESW, Pts. SWSE	18	37N/03E		
		Pts. N2NE, Pts. SENE, Pts. NENW, Pts. Govt. Lots. 1-2, Pts. SENW, Pts. NESW, Pts. Govt Lot 3, Pts. E2SE	19	37N/03E		
		Pts. SWNW, Pts. SW, Pts. SWSE	20	37N/03E		
		Pts. SENE, Pts. NESE	30	37N/03E		

Estimated Auction: Fall, 2021  
 Location: 6.5 miles northeast to Orofino, Idaho  
 Drainages: Whiskey Creek and Deer Creek  
 Class I streams: No  
 Class II streams: Yes  
 Silvicultural Prescription: Overstory Removal,  
 Harvest System: Ground based and cable yarding  
 Developments: Open 13.2 miles of spur road

SALE NO.	SALE NAME	SUBDIVISION	SEC	TWN/RNG	APPROXIMATE	
					ACREAGE	VOLUME
6	Elks Hollow Pulp	Pts. E2NE, Pts. SWNE, Pts. NW, Pts. N2SW, Pts. SWSW, Pts. N2SE, Pts. SWSE	13	38N/06E	234	3,890 MBF 1,280 MBF Pulp
		Pts. NENE, Pts. S2NE, Pts. NESE	14	38N/06E		

Estimated Auction: Spring, 2022  
 Location: 7.5 miles west to Headquarters, Idaho  
 Drainage: West Fork Elk Creek  
 Class I streams: Yes  
 Class II streams: Yes  
 Silvicultural Prescription: Selection  
 Harvest System: Ground based and cable yarding  
 Developments: Open 2.8 miles of spur road  
 Construct 0.5 mile of spur road

## IDAHO DEPARTMENT OF LANDS FY22 TIMBER SALE PLAN

July 1, 2021 – June 30, 2022

Clearwater  
Supervisory Area

SALE NO.	SALE NAME	SUBDIVISION	SEC	TWN/RNG	APPROXIMATE	
					ACREAGE	VOLUME
7	Porters 1	E2SESW	36	37N/06E	156	4,445 MBF
		NWNESE, NENWSE, S2N2SE S2SE	36	37N/06E		

Estimated Auction: Winter, 2022  
 Location: 4.0 miles east to Pierce, Idaho  
 Drainage: Orofino Creek  
 Class I streams: No  
 Class II streams: Yes  
 Silvicultural Prescription: Seed-tree  
 Harvest System: Ground based and cable yarding  
 Developments: Construct 1.10 miles of spur road  
 Reconstruct 0.6 mile of spur road

SALE NO.	SALE NAME	SUBDIVISION	SEC	TWN/RNG	APPROXIMATE	
					ACREAGE	VOLUME
8	North Porters	Pts. N2NE, Pts. N2S2NE, Pts. N2NW, Pts. SWNW, N2SENW, SWSENW	36	37N/06E	259	6,760 MBF
		NWSW, NWSWSW	36	37N/06E		

Estimated Auction: Summer, 2021  
 Location: 4.0 miles east to Pierce, Idaho  
 Drainage: Orofino Creek  
 Class I streams: No  
 Class II streams: Yes  
 Silvicultural Prescriptions: Clearcut, Seed-tree  
 Harvest System: Ground based and cable yarding  
 Developments: Construct 3.2 miles of spur road  
 Open 5.0 miles of spur road

SALE NO.	SALE NAME	SUBDIVISION	SEC	TWN/RNG	APPROXIMATE	
					ACREAGE	VOLUME
9	Democrat Ridge	Pts. S2SW	1	37N/04E	387	8,425 MBF
		Pts. S2NE, Pts. NESE	11	37N/04E		
		S2NW	12	37N/04E		
		Pts. NWSW, Pts. S2SW, Pts. SWSE	12	37N/04E		
		NWNE, Pts. NENW	13	37N/04E		
Pts. SW	4	40N/05E				

Estimated Auction: Summer, 2021  
 Location: 7.0 miles southeast to Pierce, Idaho;  
 Drainage: Poorman Creek  
 Class I streams: Yes  
 Class II streams: Yes  
 Silvicultural Prescriptions: Overstory Removal, Clearcut  
 Harvest System: Ground based and cable yarding  
 Developments: Open 8.0 miles of spur road

**IDAHO DEPARTMENT OF LANDS FY22 TIMBER SALE PLAN**

July 1, 2021 – June 30, 2022

Clearwater  
Supervisory Area

SALE NO.	SALE NAME	SUBDIVISION	SEC	TWN/RNG	APPROXIMATE	
					ACREAGE	VOLUME
10	Back Again	Pts. W2NE, Pts. SENE, Pts. W2	36	37N/03E	157	2,800 MBF
		Pts. NESE	36	37N/03E		

Estimated Auction: Fall, 2021  
 Location: 10.0 miles west to Orofino, Idaho  
 Drainage: Orofino Creek  
 Class I streams: No  
 Class II streams: Yes  
 Silvicultural Prescription: Shelterwood  
 Harvest System: Ground based  
 Developments: Open 0.66 mile of spur road  
                   Reconstruct 2.0 miles of spur road  
                   Surfacing 0.4 mile of spur road

SALE NO.	SALE NAME	SUBDIVISION	SEC	TWN/RNG	APPROXIMATE	
					ACREAGE	VOLUME
11	Casey Cedar	Pts. Govt. Lots 1-2	1	38N/04E	364	4,050MBF 5,000 cedar poles
		Pts. Govt. Lots 2-7	6	38N/05E		
		Pts. SWNE, Pts. SENW, Pts. E2SW	6	38N/05E		
		Pts. Govt. Lot 4	31	39N/05E		
		Pts. SESW, Pts. SWSE	31	39N/05E		

Estimated Auction: Winter, 2022  
 Location: 3.0 miles southeast to Headquarters, Idaho  
 Drainage: Casey Creek  
 Class I streams: Yes  
 Class II streams: Yes  
 Silvicultural Prescription: Selection  
 Harvest System: Ground based and cable yarding  
 Developments: Open 4.98 miles of spur road  
                   Construct 1.5 miles of spur road

<b>Additional small volume sales:</b>	300	400 MBF
---------------------------------------	-----	---------

<b>TOTALS:</b>	3423	52,000 MBF 5,000 cedar poles 1,280 MBF Pulp
----------------	------	---

## IDAHO DEPARTMENT OF LANDS FY22 TIMBER SALE PLAN

July 1, 2021 – June 30, 2022

Ponderosa  
Supervisory Area

SALE NO.	SALE NAME	SUBDIVISION	SEC	TWN/RNG	APPROXIMATE	
					ACREAGE	VOLUME
1	Cold Alder	Pts. Govt. Lot 2, Pts. Govt. Lot 3	36	39N/01W	307	8,250MBF
		Pts. Govt. Lot 4, Pts. N2, Pts. N2SW	36	39N/01W		
		Pts. N2SE	36	39N/01W		

Estimated Auction: Summer, 2021  
 Location: 6.0 miles northeast to Southwick, Idaho  
 Drainage: Three Bear Creek  
 Class I streams: Yes  
 Class II streams: Yes  
 Silvicultural Prescriptions: Clearcut, Seed-tree  
 Harvest System: Ground based and cable yarding  
 Developments: Open 1.80 miles of spur road  
                   Reconstruct 0.7 mile of spur road  
                   Construct 11.6 miles of spur road

2	Paragon	Pts.	16	40N/03E	250	8,100 MBF
---	---------	------	----	---------	-----	-----------

Estimated Auction: Fall, 2021  
 Location: 5.0 miles northeast to Elk River, Idaho  
 Drainage: Gold Creek  
 Class I streams: Yes  
 Class II streams: Yes  
 Silvicultural Prescriptions: Seed-tree, Overstory Removal  
 Harvest System: Ground based and cable yarding  
 Developments: Open 1.5 miles of spur road  
                   Reconstruct 4.0 miles of spur road  
                   Construct 3.0 miles of spur road

3	Patty Fry	Pts. W2NW, Pts. W2SW	28	40N/01E	279	6,710 MBF
		Pts. E2, Pts. S2SW	29	40N/01E		
		Pts. N2, Pts. NESW	32	40N/01E		
		Pts. W2NW	33	40N/01E		

Estimated Auction: Summer, 2021  
 Location: 2.0 miles east to Bovill, Idaho  
 Drainage: Fry Creek  
 Class I streams: Yes  
 Class II streams: Yes  
 Silvicultural Prescription: Clearcut  
 Harvest System: Ground based and cable yarding  
 Developments: Reconstruct 2.0 miles of main road  
                   Construct 7.0 miles of main road



## IDAHO DEPARTMENT OF LANDS FY22 TIMBER SALE PLAN

July 1, 2021 – June 30, 2022

Ponderosa  
Supervisory Area

SALE NO.	SALE NAME	SUBDIVISION	SEC	TWN/RNG	APPROXIMATE	
					ACREAGE	VOLUME
4	Powder Brush	Pts. SENW	19	40N/01W	339	7,760 MBF
		Pts. SWNE, Pts. S2NW, Pts. SW	29	40N/01W		
		Pts. SESW	30	40N/01W		
		Pts. SWSE, Pts. S2SE	35	41N/01W		
		Pts. NWSW, S2SW, Pts. SWSE	36	41N/01W		

Estimated Auction: Winter, 2021

Location: 2.5 miles southeast to Deary, Idaho and 1.0 mile southwest to Bovill, Idaho

Drainages: Brush Creek, Corral Creek and Potlatch River

Class I streams: Yes

Class II streams: Yes

Silvicultural Prescriptions: Clearcut, Seed-tree, Overstory Removal

Harvest System: Ground based and cable yarding

Developments: Construct 1.3 miles of spur road  
Reconstruct 1.3 miles of spur road  
Open 2.5 miles of spur road  
Surfacing 0.6 mile of spur road

5	White Schwartz	Pts. S2SW	28	41N/02W	43	1,000 MBF
		Pts. E2NE	32	41N/02W		
		Pts. W2NW, Pts. NWSW	33	41N/02W		

Estimated Auction: Winter, 2022

Location: 4.0 miles northwest to Deary, Idaho

Drainage: Schwartz Creek

Class I streams: Yes

Class II streams: Yes

Silvicultural Prescriptions: Seed-tree, Clearcut

Harvest System: Ground based

Developments: None

6	Brush Cedar	Pts. Govt. Lot 3, Pts. Govt. Lot 4, Pts. S2NE, Pts. SENW, Pts. E2SW, Pts. SE	7	40N/01W	300	4,690 MBF 4,200 cedar poles
		Pts. SWNW, Pts. NWSW	8	40N/01W		
		Pts. Govt. Lot 1	18	40N/01W		
		Pts. S2SE	12	40N/02W		
		Pts. N2NE, Pts. NENW	13	40N/02W		

Estimated Auction: Winter, 2022

Location: 1.5 miles northeast to Deary, Idaho

Drainages: Brush Creek, Corral Creek

Class I streams: Yes

Class II streams: Yes

Silvicultural Prescriptions: Shelterwood, Overstory Removal

Harvest System: Ground based and cable yarding

Developments: Open 5.4 miles of spur road  
Open 1.5 miles of secondary road  
Construct 1.3 miles of spur road

## IDAHO DEPARTMENT OF LANDS FY22 TIMBER SALE PLAN

July 1, 2021 – June 30, 2022

Ponderosa  
Supervisory Area

SALE NO.	SALE NAME	SUBDIVISION	SEC	TWN/RNG	APPROXIMATE	
					ACREAGE	VOLUME
7	Moose Drool	Pts. N2, Pts. NESW, Pts. N2SE	22	41N/01W	251	3,390 MBF
		Pts. Govt. Lot 2, Pts. Govt. Lot 3,	23	41N/01W		
		Pts. Govt. Lot 6, Pts. E2NW, Pts. NESW,	23	41N/01W		
		Pts. NWSE	23	41N/01W		

Estimated Auction: Spring, 2022  
 Location: 3.0 miles northwest to Bovill, Idaho  
 Drainages: Moose Creek, Potlatch River  
 Class I streams: Yes  
 Class II streams: No  
 Silvicultural Prescriptions: Clearcut, Overstory Removal  
 Harvest System: Ground based and cable yarding  
 Developments: Open 0.3 mile of spur road  
                   Construct 6.6 miles of spur road

<b>Additional small volume sales:</b>	50	100 MBF
---------------------------------------	----	---------

<b>TOTALS:</b>	1,819	40,000 MBF 4,200 cedar poles
----------------	-------	---------------------------------

## IDAHO DEPARTMENT OF LANDS FY22 TIMBER SALE PLAN

July 1, 2021 – June 30, 2022

### Maggie Creek Supervisory Area

SALE NO.	SALE NAME	SUBDIVISION	SEC	TWN/RNG	APPROXIMATE	
					ACREAGE	VOLUME
1	<b>Chase N Paper Pulp</b>	Pts. E2NE, Pts. SW, Pts. S2SE	11	35N/04E	221	1,700 MBF 750 Pulp
		Pts. W2NW, Pts. S2SW	12	35N/04E		
		Pts. SESW, Pts. SWSE	6	35N/05E		
		Pts. W2NE, Pts. Lots 1 and 2	7	35N/05E		
		Pts. E2NW	7	35N/05E		

Estimated Auction: Fall, 2021  
 Location: 1.5 miles east to Weippe, Idaho  
 Drainages: Grasshopper Creek and Heywood Creek  
 Class I streams: Yes  
 Class II streams: Yes  
 Silvicultural Prescriptions: Clearcut, Overstory Removal  
 Harvest System: Ground based  
 Developments: Construct 0.8 mile of spur road  
 Reconstruct 0.86 mile of spur road

2	<b>Crane Creek Revival Cedar</b>	Pts. NWSW	1	34N/05E	171	6,475 MBF 2,000 Poles
		Pts. SESW, Pts. SE	2	34N/05E		
		Pts. N2NE, Pts. SWNE, Pts. NENW	11	34N/05E		

Estimated Auction: Spring, 2022  
 Location: 8 miles southeast to Weippe, Idaho  
 Drainage: Crane Creek  
 Class I streams: No  
 Class II streams: Yes  
 Silvicultural Prescription: Shelterwood  
 Harvest System: Ground based and cable yarding  
 Developments: Construct 0.9 mile of spur road

3	<b>Fidlers Stash</b>	Pts. S2S2, Pts. NESE	28	35N/04E	212	3,080 MBF
		Pts. NE, Pts. E2NW, Pts. N2SE	33	35N/04E		

Estimated Auction: Summer, 2021  
 Location: 3.0 miles southwest to Weippe, Idaho  
 Drainages: Incendiary Creek and unnamed tributary of Lolo Creek  
 Class I streams: No  
 Class II streams: Yes  
 Silvicultural Prescriptions: Clearcut, Seed-tree, Overstory Removal  
 Harvest System: Ground based  
 Developments: Construct 0.65 mile of spur road  
 Reconstruct 1.3 miles of spur road

## IDAHO DEPARTMENT OF LANDS FY22 TIMBER SALE PLAN

July 1, 2021 – June 30, 2022

Maggie Creek  
Supervisory Area

SALE NO.	SALE NAME	SUBDIVISION	SEC	TWN/RNG	APPROXIMATE	
					ACREAGE	VOLUME
4	Dream Weaver	Pts. SWNE, Pts. S2NW	36	36N/05E	189	4,050 MBF
		Pts. SW, Pts. W2SE	36	36N/05E		

Estimated Auction: Summer, 2021  
 Location: 8.0 miles northeast to Weippe, Idaho  
 Drainages: Weaver Creek and Browns Creek  
 Class I streams: No  
 Class II streams: Yes  
 Silvicultural Prescription: Seed-tree  
 Harvest System: Ground based  
 Developments: Construct 3.5 miles of spur road  
 Reconstruct 0.75 mile of spur road

5	Golden Glen	Pts. SWNE, Pts. SW, Pts. SE	11	33N/05E	220	5,055 MBF
		Pts. W2NE, Pts. NW	14	33N/05E		
		Pts. W2SW, Pts. SESW	14	33N/05E		
		Pts. NWNW	23	33N/05E		

Estimated Auction: Fall, 2021  
 Location: 10.0 miles northeast to Kooskia, Idaho  
 Drainage: Maggie Creek  
 Class I streams: No  
 Class II streams: Yes  
 Silvicultural Prescriptions: Seed-tree, Overstory Removal,  
 Harvest System: Ground based and cable yarding  
 Developments: Reconstruct 2.6 miles of spur road  
 Open 1.4 miles of spur road

6	Rocky North	Pts. SENE, Pts. W2E2, Pts. W2	15	33N/05E	230	3,540 MBF
		Pts. S2NE	16	33N/05E		

Estimated Auction: Spring, 2022  
 Location: 9.50 miles east to Kamiah, Idaho  
 Drainages: Maggie Creek and North Fork Maggie Creek  
 Class I streams: Yes  
 Class II streams: Yes  
 Silvicultural Prescriptions: Clearcut, Seed-tree, Overstory Removal  
 Harvest System: Ground based and cable yarding  
 Developments: Construct 0.33 mile of spur road  
 Open 0.43 mile of spur road

## IDAHO DEPARTMENT OF LANDS FY22 TIMBER SALE PLAN

July 1, 2021 – June 30, 2022

Maggie Creek  
Supervisory Area

SALE NO.	SALE NAME	SUBDIVISION	SEC	TWN/RNG	APPROXIMATE	
					ACREAGE	VOLUME
7	<b>Log Cabin</b>	Pts. NE, Pts. E2NW, Pts. E2SW	9	33N/05E	185	3,250 MBF
		Pts. NW, Pts. N2SW, Pts. SWSW	10	33N/05E		

Estimated Auction: Winter, 2021  
 Location: 9.0 miles east to Kamiah, Idaho  
 Drainages: Cabin Creek and Swamp Creek  
 Class I streams: Yes  
 Class II streams: Yes  
 Silvicultural Prescriptions: Clearcut, Overstory Removal,  
 Harvest System: Ground based and cable yarding  
 Developments: Construct 0.11 mile of spur road  
                   Reconstruct 0.30 mile of spur road  
                   Open 2.0 miles of spur road

<b>Additional small volume sales:</b>	0	0
---------------------------------------	---	---

<b>TOTALS:</b>	1,428	27,150 MBF 2,000 cedar poles 750 MBF Pulp
----------------	-------	--

## IDAHO DEPARTMENT OF LANDS FY22 TIMBER SALE PLAN

July 1, 2021 – June 30, 2022

Payette Lakes  
Supervisory Area

SALE NO.	SALE NAME	SUBDIVISION	SEC	TWN/RNG	APPROXIMATE	
					ACREAGE	VOLUME
1	Stover Ton	Pts. E2NE	36	17N/03E	53	600 MBF 3,697 tons

Estimated Auction: Winter, 2022  
 Location: 10.25 miles northwest to McCall, Idaho  
 Drainage: Stover Creek  
 Class I streams: No  
 Class II streams: Yes  
 Silvicultural Prescription: Seed-tree  
 Harvest System: Ground based  
 Developments: Open 0.7 mile of spur road

2	Goose Bay Ton	Pts. S2SW	17	19N/03E	580	7,030 MBF 39,790 tons
		Pts. E2NW, Pts. W2W2, Pts. E2SW	20	19N/03E		
		Pts. NWNE, Pts. W2	29	19N/03E		
		Pts. NWNE, Pts. E2NW, Pts. W2W2	32	19N/03E		
		Pts. SESW	32	19N/03E		

Estimated Auction: Fall, 2021  
 Location: 2.6 miles southeast to McCall, Idaho  
 Drainage: Goose Creek  
 Class I streams: Yes  
 Class II streams: Yes  
 Silvicultural Prescriptions: Overstory Removal, Seed-tree  
 Harvest System: Ground based and cable yarding  
 Developments: Open 4.8 miles of secondary road  
                   Reconstruct 8.2 miles of spur road  
                   Construct 0.5 mile of spur road

3	Deep South Ton	Pts. SWSE	36	15N/04E	144	780 MBF 4,528 tons
		Pts. Lot 1, Pts. Lot 2, Pts. S2NE, Pts. SE	1	14N/04E		
		Pts. NENE	12	14N/04E		

Estimated Auction: Winter, 2022  
 Location: 10.0 miles southwest to Cascade, Idaho  
 Drainages: Deep Creek, Big Creek, Payette River  
 Class I streams: No  
 Class II streams: Yes  
 Silvicultural Prescription: Shelterwood  
 Harvest System: Ground based  
 Developments: Open 1.58 miles of spur road  
                   Reconstruct 1.06 miles of spur road

## IDAHO DEPARTMENT OF LANDS FY22 TIMBER SALE PLAN

July 1, 2021 – June 30, 2022

Payette Lakes  
Supervisory Area

<b>4</b>	<b>Skyhigh Ton</b>	Pts. S2NW, Pts. SW	2	14N/04E	183	2,120 MBF 12,000 tons
		Pts. NESE, Pts. S2SE	3	14N/04E		
		Pts. NE, Pts. E2NW	10	14N/04E		
		Pts. NWNW	11	14N/04E		

Estimated Auction: Summer, 2021  
 Location: 7.0 miles southwest to Cascade, Idaho  
 Drainage: Beaver Creek  
 Class I streams: No  
 Class II streams: Yes  
 Silvicultural Prescription: Seed-tree  
 Harvest System: Cable yarding  
 Developments: Open 5.31 miles of secondary road  
                   Open 7.61 miles of spur road  
                   Reconstruct 2.55 miles of spur road

<b>5</b>	<b>Boulder Cop Ton</b>	Pts. SWSE	20	18N/04E	559	6,745 MBF 38,180 tons
		Pts. SESW, Pts. S2SE	21	18N/04E		
		Pts.	28	18N/04E		
		Pts. NE, Pts. NENW, Pts. E2SE	29	18N/04E		
		Pts. NWSE	29	18N/04E		
		Pts. NENE	33	18N/04E		

Estimated Auction: Summer, 2021  
 Location: 7.0 miles northwest to McCall, Idaho  
 Drainage: Boulder Creek  
 Class I streams: No  
 Class II streams: Yes  
 Silvicultural Prescriptions: Shelterwood, Seed-tree, Clearcut  
 Harvest System: Ground based and cable yarding  
 Developments: Construct 0.85 mile of spur road  
                   Reconstruct 9.14 miles of spur road  
                   Open 4.13 miles of secondary road

<b>6</b>	<b>Two Face Ton</b>	Pts. SESE	9	14N/04E	227	2,205 MBF 8,943 tons
		Pts. SWSW	10	14N/04E		
		Pts. W2NW	15	14N/04E		
		Pts. NE, Pts. E2NW, Pts. NESW	16	14N/04E		
		Pts. N2SE	16	14N/04E		

Estimated Auction: Summer, 2021  
 Location: 5.0 miles southwest to Cascade, Idaho  
 Drainage: Beaver Creek  
 Class I streams: No  
 Class II streams: No  
 Silvicultural Prescription: Seed-tree  
 Harvest System: Ground based and cable yarding  
 Developments: Open 7.6 miles of spur road  
                   Construct 2.21 miles of spur road



**IDAHO DEPARTMENT OF LANDS FY22 TIMBER SALE PLAN**

July 1, 2021 – June 30, 2022

Payette Lakes  
Supervisory Area

<b>7</b>	<b>North Line Ton</b>	Pts. Lots 2 & 3, Pts. SWNE, Pts. S2NW	3	19N/01W	245	1,875 MBF 12,049 tons
		Pts. SW, Pts. W2SE	3	19N/01W		
		Pts. NWNE, Pts. NENW	10	19N/01W		

Estimated Auction: Summer, 2021  
 Location: 9.0 miles southeast to New Meadows, Idaho  
 Drainage: Weiser River  
 Class I streams: No  
 Class II streams: Yes  
 Silvicultural Prescriptions: Clearcut, Overstory Removal  
 Harvest System: Ground based  
 Developments: Open 6.28 miles of spur road  
 Construct 0.21 mile of spur road

SALE NO.	SALE NAME	SUBDIVISION	SEC	TWN/RNG	APPROXIMATE	
					ACREAGE	VOLUME
<b>8</b>	<b>Hardball</b>	Pts. N2, Pts. NESE	36	21N/01E	240	4,700 MBF 25,470 tons

Estimated Auction: Spring, 2022  
 Location: 12.0 miles southwest to New Meadows, Idaho  
 Drainages: Little Salmon River, Hard Creek  
 Class I streams: No  
 Class II streams: Yes  
 Silvicultural Prescriptions: Seed-tree  
 Harvest System: Ground based and cable yarding  
 Developments: Open 4.98 miles of spur road  
 Reconstruct 0.90 mile of spur road  
 Construct 2.75 miles of spur road

<b>Additional small volume sales:</b>	0	0
---------------------------------------	---	---

<b>TOTALS:</b>	2,231	26,055 MBF 144,657 tons
----------------	-------	----------------------------

# IDAHO DEPARTMENT OF LANDS FY22 TIMBER SALE PLAN

July 1, 2021 – June 30, 2022

Southwest  
Supervisory Area

SALE NO.	SALE NAME	SUBDIVISION	SEC	TWN/RNG	APPROXIMATE	
					ACREAGE	VOLUME
1	Dry Buck Summit	Pts. SW, Pts. SE	1	09N/02E	625	10,000 MBF
		Pts. E2NE, Pts. NWNW	11	09N/02E		
		Pts. E2E2, Pts. NWNW	12	09N/02E		
		Pts. E2	13	09N/02E		
		Pts. NENE	24	09N/02E		
		Pts. W2, Pts. NWSE	18	09N/03E		
		Pts. NENW	19	09N/03E		

Estimated Auction: Spring, 2022

Location: 4.0 miles northwest to Banks, Idaho

Drainage: Dry Buck Creek

Class I streams: No

Class II streams: Yes

Silvicultural Prescriptions: Clearcut, Seed-tree

Harvest System: Ground based

Developments: Open 8.41 miles of secondary road  
Reconstruct 1.33 miles of spur road  
Construct 2.42 miles of spur road

<b>Additional small volume sales:</b>		
---------------------------------------	--	--

<b>TOTALS:</b>	625	10,000 MBF
----------------	-----	------------

## IDAHO DEPARTMENT OF LANDS FY22 TIMBER SALE PLAN

July 1, 2021 – June 30, 2022

Eastern Idaho  
Supervisory Area

SALE NO.	SALE NAME	SUBDIVISION	SEC	TWN/RNG	APPROXIMATE	
					ACREAGE	VOLUME
1	<b>Coyote Ridge OSR Ton</b>	Pts.	36	01S/39E	250	1,250 MBF 8,438 Tons

Estimated Auction: Spring, 2022  
 Location: 2.0 miles northeast to Bone, Idaho  
 Drainages: Mud and Willow Creek  
 Class I streams: No  
 Class II streams: Yes  
 Silvicultural Prescription: Overstory Removal  
 Harvest System: Ground based  
 Developments: Open 3.0 miles of spur road

2	<b>Clear Creek Ton</b>	Pts.	36	04N/17E	300	500 MBF 3,375 Tons
---	------------------------	------	----	---------	-----	-----------------------

Estimated Auction: Spring, 2022  
 Location: 1.0 miles northeast to Ketchum, Idaho  
 Drainage: Clear Creek to the Comstock Ditch  
 Class I streams: No  
 Class II streams: No  
 Silvicultural Prescriptions: Shelterwood, Seed-tree, Selection  
 Harvest System: Ground based  
 Developments: Construct 1.5 miles of spur road

3	<b>Emigrant Ton</b>	Pts.	36	05S/43E	300	1,250 MBF 8,438 Tons
---	---------------------	------	----	---------	-----	-------------------------

Estimated Auction: Spring, 2022  
 Location: 3.0 miles north to Wayan, Idaho  
 Drainages: Chippy Creek, Lanes Creek  
 Class I streams: No  
 Class II streams: Yes  
 Silvicultural Prescriptions: Overstory Removal, Adaptive, Shelterwood  
 Harvest System: Ground based  
 Developments: Construct 1.5 miles of spur road  
                   Open 2.0 miles of spur road

## IDAHO DEPARTMENT OF LANDS FY22 TIMBER SALE PLAN

July 1, 2021 – June 30, 2022

Eastern Idaho  
Supervisory Area

SALE NO.	SALE NAME	SUBDIVISION	SEC	TWN/RNG	APPROXIMATE	
					ACREAGE	VOLUME
4	Blackfoot Mtns. OSR Ton	Pts. SENE, Pts. W2SW, Pts. SESW Pts. E2SE	22	02S/39E	550	2,000 MBF 13,500 Tons
		Pts. SWNW, Pts. N2SW Pts. N2SE, Pts. SESE	23	02S/39E		
		Pts. S2NW, Pts. NWSW	24	02S/39E		
		Pts. N2NE, Pts. SWNE, Pts. SENW Pts. N2SW, Pts. SWSW	25	02S/39E		
		Pts. S2NW, Pts. S2	26	02S/39E		
		Pts.	27	02S/39E		
		Pts.	35	02S/39E		
		Pts.	36	02S/39E		

Estimated Auction: Spring, 2022  
 Location: 5.0 miles northeast to Bone, Idaho  
 Drainages: Mill Creek, Willow Creek  
 Class I streams: No  
 Class II streams: No  
 Silvicultural Prescription: Overstory Removal.  
 Harvest System: Ground based  
 Developments: Open 3.5 miles of spur road

<b>Additional small volume sales:</b>	0	0
---------------------------------------	---	---

<b>TOTALS:</b>	1,400	5,000 MBF 33,751 Tons
----------------	-------	--------------------------