

FISCAL YEAR 2023 TIMBER SALES PLAN



IDAHO DEPARTMENT OF LANDS FY23 TIMBER SALE PLAN

July 1, 2022 – June 30, 2023

TABLE OF CONTENTS

Types of Sales	3
Supervisory Area Offices	4
Administrative Rules and Timber Sale Financing & Purchasing	6
Priest Lake.....	7-10
Pend Oreille Lake	11-16
Mica.....	17-18
St. Joe	19-23
Clearwater	24-27
Ponderosa	28-31
Maggie Creek	32-34
Payette Lakes	35-37
Southwest.....	38-39
Eastern	40
Statewide Summary	41

IDAHO DEPARTMENT OF LANDS FY23 TIMBER SALE PLAN

July 1, 2022 – June 30, 2023

Types of Sales

Timber Sales

Timber sales contain an estimated volume of at least 1,000 MBF and exceed the net appraised stumpage value for salvage sales established by the state board of land commissioners. Timber sales are designed to produce maximum stumpage returns to the endowment funds consistent with prudent long-term management practices.

Timber sales are advertised for four weeks in a newspaper in the county where the sale is located, and are sold at public auction.

Direct Sales

Direct Sale net appraised stumpage value does not exceed the maximum value established by the State Board of Land Commissioners. This type of sale is to be used to harvest isolated or by-passed parcels of timber of insufficient value and volume to justify a salvage sale. The direct sale is not used where two or more potential purchasers may be interested in bidding on the forest products offered for sale.

The direct sale of forest product stumpage is made without advertisement as authorized by the Director.

IDAHO DEPARTMENT OF LANDS FY23 TIMBER SALE PLAN

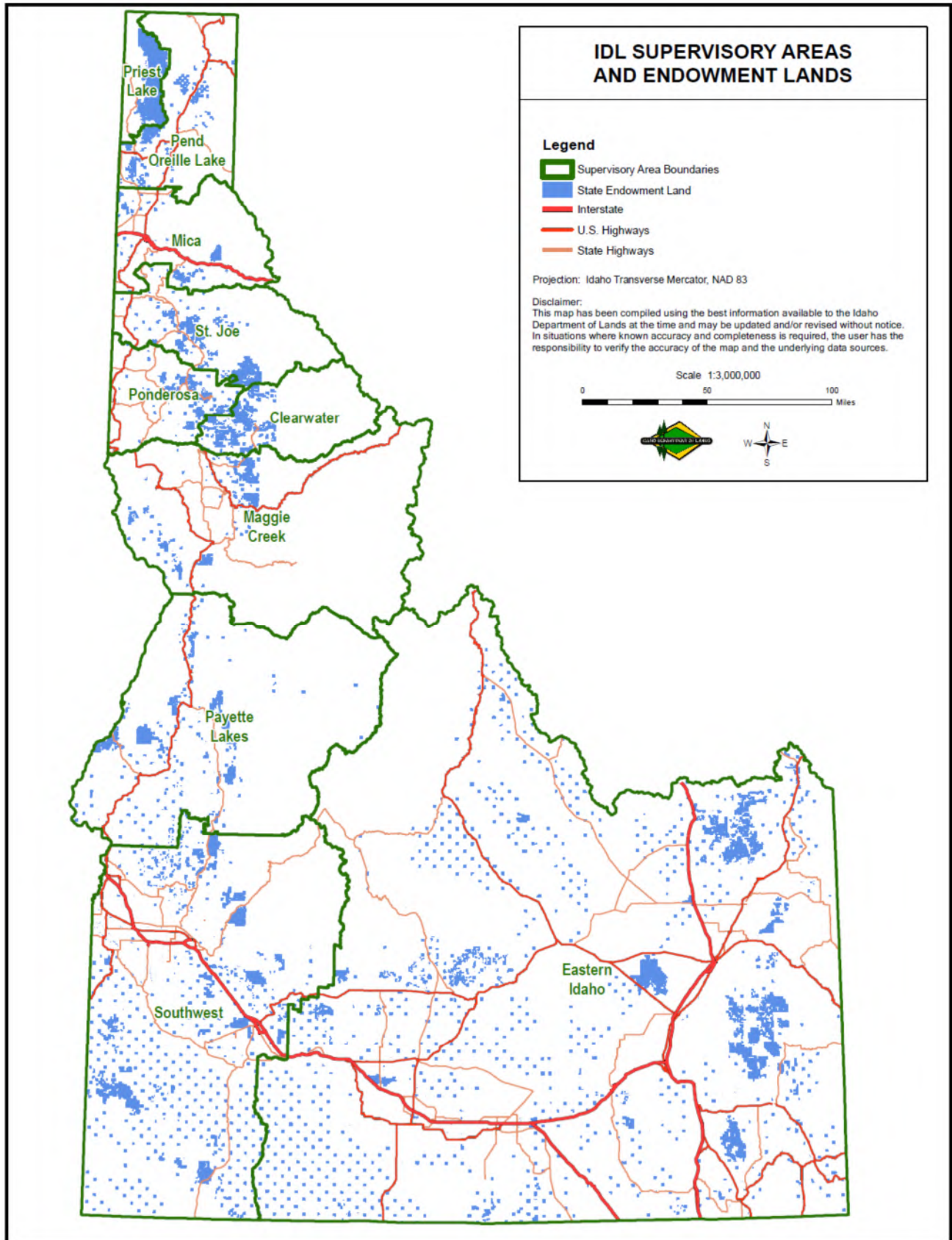
July 1, 2022 – June 30, 2023

Supervisory Area Offices

SUPERVISORY AREA	AREA SUPERVISOR	PHONE
Priest Lake 4053 Cavanaugh Bay Road Coolin, ID 83821	Dan Brown	(208) 443-2516
Pend Oreille Lake 2550 Highway 2 West Sandpoint, ID 83864	Tom Fleer	(208) 263-5104
Mica 3258 W. Industrial Loop Coeur d'Alene, ID 83815	Andrew Smyth	(208) 769-1577
St. Joe 1806 Main Avenue St. Maries, ID 83861	Jason Svancara	(208) 245-4551
Ponderosa 3130 Highway 3 Deary, ID 83823	Chris Tretter	(208) 877-1121
Clearwater 10230 Highway 12 Orofino, ID 83544	Jay Sila	(208) 476-4587
Maggie Creek 913 Third Street Kamiah ID 83536	Dave Schwartz	(208) 935-2141
Payette Lakes 555 Deinhard Lane McCall, ID 83638	Scott Corkill	(208) 634-7125
Southwest/South Central 8355 W. State Street Boise, ID 83714	Dean Johnson	(208) 334-3488
Eastern Idaho 3563 Ririe Highway Idaho Falls, ID 83401	Pat Brown	(208) 525-7167

IDAHO DEPARTMENT OF LANDS FY23 TIMBER SALE PLAN

July 1, 2022 – June 30, 2023



IDAHO DEPARTMENT OF LANDS FY23 TIMBER SALE PLAN

July 1, 2022 – June 30, 2023

Administrative Rules and Purchaser Sale Requirements

Links to detailed information on the internet are provided below.

Administrative Rules of the Department of Lands:

[20.02.14 - Selling Forest Products on State-Owned Endowment Lands](#)

For information regarding timber sale procedures, bidding procedures, bonding requirements and insurance requirements, click on the link below:

[Purchaser Sale Requirements](#)

IDAHO DEPARTMENT OF LANDS FY23 TIMBER SALE PLAN

July 1, 2022 - June 30, 2023

Priest Lake
Supervisory Area

Sale Name:

Coolin OSR

Estimated Auction: 7/1/2022

Location: 2 Miles South of Coolin

Drainages: Priest River

Class I Streams: No

Class II Streams: Yes

Silvicultural Prescription: Overstory Removal

Harvest System: Ground based, cable yarding

APPROXIMATE
ACREAGE: 458 acres
VOLUME: 2,500 MBF

Timber Sale Legal Description

Subsection	Section	Township	Range
Pts. NE, Pts. E2NW, Pts. SW, Pts. W2SE	11	59N	04W
Pts. W2NE, Pts. E2NW	14	59N	04W
Pts. NWNE, Pts. S2NE, Pts. N2SE	16	59N	04W
Pts. Lot 5, Pts. S2SW, Pts. SWSE	5	59N	04W
Pts. Lot 12, Pts. Lot 13, Pts. Lot 14	6	59N	04W
Pts. Lot 5, Pts. NE	7	59N	04W
Pts. Lot 1, Pts. Lot 2, Pts. Lot 3, Pts. NWNE, Pts. SE	8	59N	04W

Sale Name:

Cousin Eddy

Estimated Auction: 11/1/2022

Location: 15 Miles North of Coolin

Drainages: Indian Creek

Class I Streams: No

Class II Streams: No

Silvicultural Prescription: Clearcut, Overstory Removal, Seedtree

Harvest System: Ground based, cable yarding

APPROXIMATE
ACREAGE: 431 acres
VOLUME: 4,000 MBF

Timber Sale Legal Description

Subsection	Section	Township	Range
Pts. SW, Pts. W2SE, Pts. SESE	16	61N	03W
Pts. S2NE, Pts. SE	17	61N	03W
Pts. NENE	20	61N	03W
Pts. N2NE, Pts. SWNE, Pts. NW	21	61N	03W
Pts. NWNW	22	61N	03W

IDAHO DEPARTMENT OF LANDS FY23 TIMBER SALE PLAN

July 1, 2022 - June 30, 2023

Priest Lake
Supervisory Area

Sale Name:

Mineral Flats

Estimated Auction: 7/1/2022

Location: 3 Miles South of Coolin

Drainages: Priest River

Class I Streams: No

Class II Streams: No

Silvicultural Prescription: Clearcut, Seedtree

Harvest System: Ground based

APPROXIMATE

ACREAGE:
515 acres

VOLUME:
5,700 MBF

Timber Sale Legal Description

Subsection	Section	Township	Range
Pts. S2SW, Pts. S2SE	21	59N	04W
Pts. SW	23	59N	04W
Pts. NW	26	59N	04W
Pts. NENE, Pts. NW	27	59N	04W
Pts. N2, Pts. NESW, Pts. NESE	28	59N	04W
Pts. E2NE, Pts. SE	29	59N	04W

Sale Name:

Muddy Water Cedar

Estimated Auction: 7/1/2022

Location: 10 Miles South of Coolin

Drainages: Waters Creek

Class I Streams: Yes

Class II Streams: Yes

Silvicultural Prescription: Clearcut, Overstory Removal, Seedtree

Harvest System: Ground based, cable yarding

APPROXIMATE

ACREAGE:
316 acres

VOLUME:
4,000 MBF
450 Poles

Timber Sale Legal Description

Subsection	Section	Township	Range
Pts. Lots 1, 2, 3	6	58N	03W
Pts. Lot 2, Pts. Lot 3, Pts. Lot 4	5	58N	03W
Pts. Lot 4	1	58N	04W
Pts. NE, Pts. E2SW, Pts. NESE, Pts. W2SE	11	58N	04W
Pts. W2NW, Pts. NWSW	12	58N	04W
Pts. SWNE, Pts. NESW, Pts. SWSE	14	58N	04W
Pts. Lot 2, Pts. SENW, Pts. SESW, Pts. S2SE	31	59N	03W
Pts. SESW, Pts. SWSE	32	59N	03W
Pts. NENE, Pts. S2NE, Pts. NESW, Pts. S2SW, Pts. N2SE, Pts. SWSE	36	59N	04W

IDAHO DEPARTMENT OF LANDS FY23 TIMBER SALE PLAN

July 1, 2022 - June 30, 2023

Priest Lake
Supervisory Area

Sale Name:

P River Flat

Estimated Auction: 8/22/2022

Location: 4 Miles South of Coolin

Drainages: Priest River

Class I Streams: No

Class II Streams: No

Silvicultural Prescription: Overstory Removal, Seedtree

Harvest System: Ground based

APPROXIMATE

ACREAGE:

284 acres

VOLUME:

3,050 MBF

Timber Sale Legal Description

Subsection	Section	Township	Range
Pts. Lot 1, Pts. SW, Pts. W2SE	29	59N	04W
Pts. Lot 8, Pts. SENE, Pts. N2SE	31	59N	04W
Pts. W2NE, Pts. N2NW, Pts. SWNW, Pts. NESW	32	59N	04W

Sale Name:

Resurrection Cedar

Estimated Auction: 7/20/2022

Location: 9 Miles NW of Coolin

Drainages: Hunt Creek

Class I Streams: No

Class II Streams: Yes

Silvicultural Prescription: Clearcut, Shelterwood

Harvest System: Ground based, cable yarding

APPROXIMATE

ACREAGE:

180 acres

VOLUME:

2,500 MBF

1,600 Poles

Timber Sale Legal Description

Subsection	Section	Township	Range
Pts. Lot 4, Pts. S2NW, Pts W2SW	5	60N	03W
Pts. Lot 1, Pts. S2NE, Pts. N2SE, Pts. SESE	6	60N	03W
Pts. NENE	7	60N	03W

IDAHO DEPARTMENT OF LANDS FY23 TIMBER SALE PLAN

July 1, 2022 - June 30, 2023

Priest Lake
Supervisory Area

Sale Name:

Trapper Falls

Estimated Auction: 10/1/2022

Location: 20 Miles North of Coolin

Drainages: Trapper Creek

Class I Streams: No

Class II Streams: Yes

Silvicultural Prescription: Clearcut, Seedtree

Harvest System: Ground based

APPROXIMATE
ACREAGE: 138 acres VOLUME: 3,800 MBF

Timber Sale Legal Description

Subsection	Section	Township	Range
Pts. Lot 4, Pts. SWNW, Pts. W2SW	4	63N	04W
Pts. Lot 1, Pts. SENE, Pts. SE	5	63N	04W
Pts. N2NE	8	63N	04W
Pts. NWNW	9	63N	04W
Pts. SESE	32	64N	04W
Pts SWSW	33	64N	04W

Supervisory Area Totals: Priest Lake

Additional Small Volume Sales: 500 MBF, 100 acres
 Supervisory Area Acres: 2,422 acres
 Supervisory Area Total Sawlog: 26,050 MBF
 Supervisory Area Total Cedar Poles: 2,050 Cedar Poles

IDAHO DEPARTMENT OF LANDS FY23 TIMBER SALE PLAN

July 1, 2022 - June 30, 2023

Pend Oreille Lake
Supervisory Area

Sale Name:

Big Fork Cedar

Estimated Auction: 1/1/2023

Location: 13 miles north of Priest River

Drainages: Big Creek

Class I Streams: Yes

Class II Streams: Yes

Silvicultural Prescription: Clearcut

Harvest System: Ground based, cable yarding, prescriptive

APPROXIMATE

ACREAGE:
125 acres

VOLUME:
3,825 MBF
1,060 Poles

Timber Sale Legal Description

Subsection	Section	Township	Range
Pts Gov Lots 3, 4, 5, 6, Pts SENW	05	057N	003W
Pts Gov Lots 1, 8	06	057N	003W

Sale Name:

Deep Clean

Estimated Auction: 10/1/2022

Location: Deep Creek

Drainages: Deep Creek

Class I Streams: Yes

Class II Streams: No

Silvicultural Prescription: Clearcut

Harvest System: Ground based

APPROXIMATE

ACREAGE:
48 acres

VOLUME:
1,005 MBF

Timber Sale Legal Description

Subsection	Section	Township	Range
Pts S2NW, Pts N2SW, Pts SWSW, Pts SESE	36	061N	001W

IDAHO DEPARTMENT OF LANDS FY23 TIMBER SALE PLAN

July 1, 2022 - June 30, 2023

Pend Oreille Lake
Supervisory Area

Sale Name:

Doug Fir Meadows

APPROXIMATE

ACREAGE:
184 acres

VOLUME:
4,130 MBF

Estimated Auction: 11/10/2022

Location: 4 miles south of Priest River

Drainages: Curtis Creek

Class I Streams: Yes

Class II Streams: Yes

Silvicultural Prescription: Clearcut, Seedtree

Harvest System: Ground based, cable yarding, prescriptive

Timber Sale Legal Description

Subsection	Section	Township	Range
Pts SWSW	13	055N	005W
Pts NE, Pts SE	14	055N	005W
Pts NENE	23	055N	005W
Pts Gov Lots 1, 2, 3, Pts W2NE, Pts NW	24	055N	005W

Sale Name:

Go West

APPROXIMATE

ACREAGE:
256 acres

VOLUME:
980 MBF

Estimated Auction: 9/1/2022

Location: 12 miles north Priest River

Drainages: Priest River

Class I Streams: Yes

Class II Streams: Yes

Silvicultural Prescription: Overstory Removal

Harvest System: Ground based, prescriptive

Timber Sale Legal Description

Subsection	Section	Township	Range
Pts Gov Lots 5, Pts SWNW	03	057N	004W
Pts Gov Lots 1 - 8, Pts SWNW	04	057N	004W
Pts Gov Lots 1, 12, 13, 14, 8, 9, Pts N2SE	05	057N	004W
Pts Gov Lots 6	33	058N	004W

IDAHO DEPARTMENT OF LANDS FY23 TIMBER SALE PLAN

July 1, 2022 - June 30, 2023

Pend Oreille Lake
Supervisory Area

Sale Name:

Golden Yacht

Estimated Auction: 7/1/2022

Location: 1 miles southeast of Sandpoint

Drainages: Pend Orielle Lake

Class I Streams: No

Class II Streams: Yes

Silvicultural Prescription: Overstory Removal, Seedtree

Harvest System: Ground based, cable yarding, prescriptive

APPROXIMATE

ACREAGE:
280 acres

VOLUME:
6,175 MBF

Timber Sale Legal Description

Subsection	Section	Township	Range
Pts Gov Lots 1, 2, Pts NE, Pts SE, Pts E2NW, Pts E2SW	36	057N	002W
Pts Gov Lots 6, Pts SW, Pts S2SE	36	057N	003W

Sale Name:

High Low

Estimated Auction: 8/1/2022

Location: 4 miles west of Naples

Drainages: Falls Creek

Class I Streams: No

Class II Streams: Yes

Silvicultural Prescription: Clearcut, Overstory Removal, Seedtree

Harvest System: Ground based, cable yarding, prescriptive

APPROXIMATE

ACREAGE:
259 acres

VOLUME:
4,655 MBF

Timber Sale Legal Description

Subsection	Section	Township	Range
Pts Gov Lots 6, 7, Pts SWNE, Pts SENW, Pts E2SW, Pts N2SE	06	060N	001W
Pts SWNE, Pts SENW, Pts NESW, Pts NWSE	07	060N	001W
Pts N2NE, Pts SWNE, Pts NESW, Pts S2SW, Pts N2SE, Pts SWSE, Pts SENE	16	060N	001W

IDAHO DEPARTMENT OF LANDS FY23 TIMBER SALE PLAN

July 1, 2022 - June 30, 2023

**Pend Oreille Lake
Supervisory Area**

Sale Name:

Poutine

Estimated Auction: 3/1/2023

Location: 5 miles northwest of Naples

Drainages: Ruby Creek

Class I Streams: Yes

Class II Streams: Yes

Silvicultural Prescription: Clearcut, Seedtree

Harvest System: Ground based, cable yarding, prescriptive

APPROXIMATE

ACREAGE:
209 acres

VOLUME:
2,960 MBF

Timber Sale Legal Description

Subsection	Section	Township	Range
Pts SWNW, Pts NWSW	15	061N	001W
Pts NESE, Pts NE, Pts S2NW, Pts SE	16	061N	001W

Sale Name:

Roundup

Estimated Auction: 9/1/2022

Location: 3 miles east of Naples

Drainages: Trail Creek

Class I Streams: No

Class II Streams: Yes

Silvicultural Prescription: Clearcut, Overstory Removal, Seedtree

Harvest System: Ground based, cable yarding, prescriptive

APPROXIMATE

ACREAGE:
245 acres

VOLUME:
4,420 MBF
450 Poles

Timber Sale Legal Description

Subsection	Section	Township	Range
Pts NW, Pts E2SW, Pts SWSE	10	60N	01E
Pts SWNE, Pts SENW, Pts E2SW, Pts NWSE, Pts S2SE	20	60N	01E
Pts NWNE, Pts NENW	29	60N	01E
Pts SWSW	3	60N	01E
Pts E2SW, Pts NWSE	7	60N	01E

IDAHO DEPARTMENT OF LANDS FY23 TIMBER SALE PLAN

July 1, 2022 - June 30, 2023

Pend Oreille Lake
Supervisory Area

Sale Name:

Saddle Sore

APPROXIMATE

ACREAGE:
108 acres

VOLUME:
2,205 MBF

Estimated Auction: 7/1/2022

Location: 4 miles northwest of Priest River

Drainages: Freeman Lake

Class I Streams: No

Class II Streams: Yes

Silvicultural Prescription: Clearcut

Harvest System: Ground based, cable yarding, prescriptive

Timber Sale Legal Description

Subsection	Section	Township	Range
Pts SESE	08	056N	005W
Pts SWNE, Pts SWNW, Pts SW, Pts W2SE	09	056N	005W

Sale Name:

Upper Twentymile

APPROXIMATE

ACREAGE:
145 acres

VOLUME:
3,820 MBF

Estimated Auction: 4/1/2023

Location: 4 miles east of Naples

Drainages: Twenty mile creek

Class I Streams: No

Class II Streams: Yes

Silvicultural Prescription: Clearcut, Seedtree

Harvest System: Ground based, cable yarding, prescriptive

Timber Sale Legal Description

Subsection	Section	Township	Range
Pts Gov Lots 3-4, Pts SENE, Pts S2NW, Pts N2SW, Pts SE	2	60N	01E

IDAHO DEPARTMENT OF LANDS FY23 TIMBER SALE PLAN

July 1, 2022 - June 30, 2023

Pend Oreille Lake
Supervisory Area

Sale Name:

White Red

Estimated Auction: 5/1/2023

Location: 5 miles south of Priest River

Drainages: White Creek

Class I Streams: No

Class II Streams: Yes

Silvicultural Prescription: Clearcut

Harvest System: Ground based

APPROXIMATE

ACREAGE:
67 acres

VOLUME:
1,760 MBF

Timber Sale Legal Description

Subsection	Section	Township	Range
Pts Gov Lot 1	18	055N	004W
Pts Gov Lot 4	12	055N	005W
Pts Gov Lots 1, 2	13	055N	005W

Supervisory Area Totals: Pend Oreille Lake

Additional Small Volume Sales: 200 MBF, 100 acres
 Supervisory Area Acres: 2,026 acres
 Supervisory Area Total Sawlog: 36,135 MBF
 Supervisory Area Total Cedar Poles: 1,510 Cedar Poles

IDAHO DEPARTMENT OF LANDS FY23 TIMBER SALE PLAN

July 1, 2022 - June 30, 2023

Mica
Supervisory Area

Sale Name:
Lower Robinson Cedar

Estimated Auction: 4/18/2023
Location: Rose Lake
Drainages: Robinson Creek and Bull Run Creek
Class I Streams: Yes
Class II Streams: Yes
Silvicultural Prescription: Clearcut, Overstory Removal, Seedtree
Harvest System: Ground based, cable yarding

APPROXIMATE
ACREAGE: 734 acres
VOLUME: 6,750 MBF
250 Poles

Subsection	Timber Sale Legal Description	Section	Township	Range
Pts Gov Lots 11, 12		03	048N	001W
Pts NWNE, S2NE		08	048N	001W
Gov Lots 4, Pts Gov Lots 3, SWNE, S2NW		10	048N	001W
Pts SWSE		24	048N	002W
Pts W2NE, Pts S2NW, Pts E2SW, W2SE		25	048N	002W
Pts Gov Lots 1, Pts N2NE, Pts NENW		36	048N	002W

Sale Name:
Lower Spring

Estimated Auction: 8/2/2022
Location: Spring Creek
Drainages: Spring
Class I Streams: Yes
Class II Streams: Yes
Silvicultural Prescription: Clearcut, Overstory Removal, Seedtree
Harvest System: Ground based, cable yarding

APPROXIMATE
ACREAGE: 591 acres
VOLUME: 6,500 MBF

Subsection	Timber Sale Legal Description	Section	Township	Range
Gov Lots 1-3		01	049N	002E
Pts NWNW, Pts S2NW Pts N2SW, Pts SESW, Pts SESE		25	050N	002E
Pts Gov Lots 1, 2, 5, 6, Pts S2NE, Pts NESW, Pts N2SE		26	050N	002E
Pts NE, Pts N2NW, Pts SENW, Pts SW, Pts SE		36	050N	002E

IDAHO DEPARTMENT OF LANDS FY23 TIMBER SALE PLAN

July 1, 2022 - June 30, 2023

Mica
Supervisory Area

Sale Name:

Scenic Lodge Cedar

Estimated Auction: 2/1/2023

Location: Rathdrum

Drainages: Lost Creek

Class I Streams: Yes

Class II Streams: Yes

Silvicultural Prescription: Clearcut, Overstory Removal, Seedtree, ROW

Harvest System: Ground based, cable yarding

APPROXIMATE

ACREAGE:
426 acres

VOLUME:
4,750 MBF

Timber Sale Legal Description

Subsection	Section	Township	Range
Pts Gov Lots 3, 5, 6, & 10, Pts SENW, Pts NESW, Pts N2SE	4	052N	005W
Pts Gov Lots 3 & 4, Pts SWNE, Pts NW, Pts N2SW	22	052N	005W
Pts Gov Lots 1-5, Pts SWNE, Pts E2NW, Pts NESW	27	052N	005W

Supervisory Area Totals: Mica

Supervisory Area Acres: 1,751 acres
 Supervisory Area Total Sawlog: 18,000 MBF
 Supervisory Area Total Cedar Poles: 250 Cedar Poles

IDAHO DEPARTMENT OF LANDS FY23 TIMBER SALE PLAN

July 1, 2022 - June 30, 2023

**St. Joe
Supervisory Area**

Sale Name:

Boehls Cabeza

Estimated Auction: 1/15/2023

Location: Floodwood

Drainages: Smith Ridge

Class I Streams: No

Class II Streams: Yes

Silvicultural Prescription: Clearcut, ROW

Harvest System: Ground Based, Cable Yarding

APPROXIMATE

ACREAGE:
191 acres

VOLUME:
7,360 MBF

Timber Sale Legal Description

Subsection	Section	Township	Range
Pts NWSE, Pts. S2SE	20	41N	05E
Pts. S2NW, Pts. NWNWSW	27	41N	05E
Pts. SENE, Pts. NESE	28	41N	05E
Pts. NENE, Pts. SWNW, Pts. NWSW	29	41N	05E
Pts S2NE, Pts. SENW, Pts. NESW, Pts. SE	30	41N	05E
Pts. SWNE, Pts. SENW, Pts. E2SW, Pts. NWSE	31	41N	05E

Sale Name:

Crystal Bowl

Estimated Auction: 10/1/2022

Location: Santa ID

Drainages: Crystal Creek

Class I Streams: Yes

Class II Streams: No

Silvicultural Prescription: Clearcut, Seedtree

Harvest System: Ground Based, Cable Yarding

APPROXIMATE

ACREAGE:
245 acres

VOLUME:
8,650 MBF

Timber Sale Legal Description

Subsection	Section	Township	Range
Pts W2SW	10	44N	01E
Pts SW, Pts SWSE	10	44N	01E
Pts NWNE, Pts NW	15	44N	01E
Pts W2NW	15	44N	01E
Pts NE	16	44N	01E
Pts SESE	9	44N	01E

IDAHO DEPARTMENT OF LANDS FY23 TIMBER SALE PLAN

July 1, 2022 - June 30, 2023

**St. Joe
Supervisory Area**

Sale Name:

Davies Glades

Estimated Auction: 4/1/2023

Location: Santa ID

Drainages: Davis Creek

Class I Streams: Yes

Class II Streams: No

Silvicultural Prescription: Clearcut, Overstory Removal, Seedtree, Shelterwood

Harvest System: Ground Based, Cable Yarding

APPROXIMATE

ACREAGE:
575 acres

VOLUME:
16,260 MBF

Timber Sale Legal Description

Subsection	Section	Township	Range
Pts. Lots 1-3, Pts. S2NE, Pts. SENW, Pts. SW, Pts. NWSE	4	44N	01E
Pts. E2NE	8	44N	01E
Pts. N2NW	9	44N	01E
Pts. Lot 2-3, Pts. SWNE, Pts. S2NW, Pts. SW, Pts. NESE	1	44N	01W
Pts. N2NW	12	44N	01W
Pts. E2SE	2	44N	01W
Pts. Lot 2-3, Pts. SE	30	45N	01E
Pts. W2NE, Pts. SENE, Pts. E2SW, Pts. W2SE, Pts. NESE	31	45N	01E
Pts. SENE, Pts. SE	25	45N	01W
Pts. SWSE	36	45N	01W

Sale Name:

Golden Cedar

Estimated Auction: 3/15/2023

Location: Fernwood ID

Drainages: Carpenter Creek

Class I Streams: No

Class II Streams: Yes

Silvicultural Prescription: Clearcut, Overstory Removal, Shelterwood

Harvest System: Ground Based, Cable Yarding

APPROXIMATE

ACREAGE:
222 acres

VOLUME:
6,060 MBF
1,843 Poles

Timber Sale Legal Description

Subsection	Section	Township	Range
Pts. S2	21	43N	01W

IDAHO DEPARTMENT OF LANDS FY23 TIMBER SALE PLAN

July 1, 2022 - June 30, 2023

St. Joe
Supervisory Area

Sale Name:

Goldilogs

Estimated Auction: 4/1/2023

Location: Fernwood ID

Drainages: Adams Creek

Class I Streams: No

Class II Streams: Yes

Silvicultural Prescription: Clearcut

Harvest System: Ground Based, Cable Yarding

APPROXIMATE

ACREAGE:
97 acres

VOLUME:
3,845 MBF

Timber Sale Legal Description

Subsection	Section	Township	Range
Pts. S2SW	27	044N	001E
Pts NENW, Pts W2NW	34	044N	001E

Sale Name:

Lovell Valley

Estimated Auction: 5/15/2023

Location: Plummer ID

Drainages: Lovell Valley

Class I Streams: No

Class II Streams: Yes

Silvicultural Prescription: Clearcut, Overstory Removal, Seedtree

Harvest System: Ground Based, Cable Yarding

APPROXIMATE

ACREAGE:
287 acres

VOLUME:
7,150 MBF

Timber Sale Legal Description

Subsection	Section	Township	Range
Pts E2NE, Pts NESE	16	45N	04W
Pts NWNE, Pts S2NE, Pts NW, Pts N2SW, Pts SWSW, Pts N2SE, Pts. SESE	36	46N	05W

Sale Name:

Marble Marten

Estimated Auction: 6/1/2023

Location: Calder ID

Drainages: Marble Creek

Class I Streams: Yes

Class II Streams: Yes

Silvicultural Prescription: Clearcut, Overstory Removal, Shelterwood

Harvest System: Ground Based, Cable Yarding

APPROXIMATE

ACREAGE:
294 acres

VOLUME:
5,950 MBF

Timber Sale Legal Description

Subsection	Section	Township	Range
Pts L 1-4, Pts SWNE, Pts SENW, Pts N2SW, All NWSE	2	44N	03E
Pts Lot 1	3	44N	03E
Pts SESE	34	45N	03E

IDAHO DEPARTMENT OF LANDS FY23 TIMBER SALE PLAN

July 1, 2022 - June 30, 2023

St. Joe
Supervisory Area

Sale Name:

Second Goat Cedar

Estimated Auction: 5/1/2023

Location: Floodwood

Drainages: Floodwood Creek

Class I Streams: No

Class II Streams: Yes

Silvicultural Prescription: Clearcut, Shelterwood

Harvest System: Ground Based, Cable Yarding

APPROXIMATE

ACREAGE:
616 acres

VOLUME:
12,720 MBF
1,500 Poles

Timber Sale Legal Description

Subsection	Section	Township	Range
Pts. SESW, Pts. SWSE	1	41N	04E
Pts. All	10	41N	04E
Pts. N2NW	11	41N	04E
Pts. NE, Pts. NENW, Pts. N2SE	12	41N	04E
Pts. NESW, Pts. S2SW	2	41N	04E
Pts. S2SW, Pts. SE	3	41N	04E
Pts. SESE	4	41N	04E
Pts. E2NE	9	41N	04E

Sale Name:

Smokey Bear Cedar

Estimated Auction: 6/1/2023

Location: Santa ID

Drainages: Tyson Creek

Class I Streams: No

Class II Streams: Yes

Silvicultural Prescription: Clearcut, Seedtree

Harvest System: Ground Based, Cable Yarding

APPROXIMATE

ACREAGE:
170 acres

VOLUME:
4,290 MBF
4,400 Poles

Timber Sale Legal Description

Subsection	Section	Township	Range
Pts. NENW, Pts. W2NW, Pts. W2SW	10	43N	01W
Pts. SESE	4	43N	01W
Pts. NE, Pts. NESE, Pts. S2SE	9	43N	01W

IDAHO DEPARTMENT OF LANDS FY23 TIMBER SALE PLAN

July 1, 2022 - June 30, 2023

**St. Joe
Supervisory Area**

Sale Name: **Twisted Cedar** APPROXIMATE
ACREAGE: 175 acres VOLUME: 6,055 MBF
1,685 Poles
 Estimated Auction: 6/1/2023
 Location: Floodwood
 Drainages: Stocking Meadows Ridge
 Class I Streams: No
 Class II Streams: Yes
 Silvicultural Prescription: Overstory Removal, ROW, Seedtree, Single Tree Select
 Harvest System: Ground Based, Cable Yarding

Timber Sale Legal Description

Subsection	Section	Township	Range
Pts Gov Lots 1-4, Pts SWNE, Pts S2NW	1	41N	04E
Pts Gov Lots 3-4, Pts SENE, Pts S2NW, Pts SW, Pts N2SE	1	42N	04E
Pts NWNW	12	42N	04E
Pts S2SW, Pts NWSE, Pts S2SE	36	42N	04E

Sale Name: **Phantom Dennis** APPROXIMATE
ACREAGE: 68 acres VOLUME: 1,825 MBF
 Estimated Auction: 2/1/2023
 Location: Emida
 Drainages: Willow Creek
 Class I Streams: No
 Class II Streams: Yes
 Silvicultural Prescription: Clearcut
 Harvest System: Ground Based, Cable Yarding

Timber Sale Legal Description

Subsection	Section	Township	Range
Pts SESW, Pts SWSE	9	43N	03W
Pts NWNE, Pts NENW	15	43N	03W

Supervisory Area Totals: St. Joe

Additional Small Volume Sales: 200 MBF, 100 acres
 Supervisory Area Acres: 3,040 acres
 Supervisory Area Total Sawlog: 80,365 MBF
 Supervisory Area Total Cedar Poles: 9,428 Cedar Poles

IDAHO DEPARTMENT OF LANDS FY23 TIMBER SALE PLAN

July 1, 2022 - June 30, 2023

Clearwater Supervisory Area

Sale Name:

Democrat Ridge

Estimated Auction: 8/1/2022

Location: 7 miles southeast to Pierce, Idaho

Drainages: Poorman Creek

Class I Streams: Yes

Class II Streams: Yes

Silvicultural Prescription: Clearcut, Overstory Removal

Harvest System: Ground based, cable yarding

APPROXIMATE
ACREAGE: 387 acres
VOLUME: 8,515 MBF

Timber Sale Legal Description

Subsection	Section	Township	Range
Pts S2SW	1	37N	04E
Pts S2NE, Pts NESE	11	37N	04E
Pts S2NW, Pts SW, Pts W2SE	12	37N	04E
Pts NWNE, Pts NENW	13	37N	04E

Sale Name:

North Fork Big Creek

Estimated Auction: 10/1/2022

Location: 6 miles southeast to Headquarters, Idaho

Drainages: North Fork Big Creek

Class I Streams: Yes

Class II Streams: Yes

Silvicultural Prescription: Clearcut, Shelterwood

Harvest System: Ground based, cable yarding

APPROXIMATE
ACREAGE: 185 acres
VOLUME: 6,365 MBF

Timber Sale Legal Description

Subsection	Section	Township	Range
Pts. S2NE, Pts. SENW, Pts. SW, Pts. N2SE, Pts. SWSE	34	39N	04E

IDAHO DEPARTMENT OF LANDS FY23 TIMBER SALE PLAN

July 1, 2022 - June 30, 2023

**Clearwater
Supervisory Area**

Sale Name:

Ove Dent OSR

Estimated Auction: 7/1/2022

Location: 9 miles south to Orofino, Idaho

Drainages: Unnamed tributaries to Dworshak Reservoir

Class I Streams: No

Class II Streams: Yes

Silvicultural Prescription: Overstory Removal

Harvest System: Ground based and cable yarding

APPROXIMATE

ACREAGE:
375 acres

VOLUME:
3,200 MBF

Timber Sale Legal Description

Subsection	Section	Township	Range
Pts. NESE	25	38N	01E
Pts. S2, Pts. Gov Lots 2-3	30	38N	02E
Pts. Gov Lots 5-8	30	38N	02E
Pts. E2SW, Pts. W2SE	30	38N	02E

Sale Name:

Pierce Shanghai OSR

Estimated Auction: 7/15/2022

Location: 3 miles southwest to Pierce, Idaho

Drainages: Pierce Creek

Class I Streams: Yes

Class II Streams: Yes

Silvicultural Prescription: Overstory Removal

Harvest System: Ground based, cable yarding

APPROXIMATE

ACREAGE:
130 acres

VOLUME:
1,540 MBF

Timber Sale Legal Description

Subsection	Section	Township	Range
Pts. S2NE, Pts. NESW, Pts. S2SW, Pts. SE	32	37N	06E

Sale Name:

Snake 36

Estimated Auction: 10/1/2022

Location: 5 miles northeast to Headquarters, Idaho

Drainages: Snake Creek

Class I Streams: Yes

Class II Streams: Yes

Silvicultural Prescription: ROW, Seedtree

Harvest System: Ground based, cable yarding

APPROXIMATE

ACREAGE:
380 acres

VOLUME:
9,200 MBF

Timber Sale Legal Description

Subsection	Section	Township	Range
Pts. All	36	38N	04E

IDAHO DEPARTMENT OF LANDS FY23 TIMBER SALE PLAN

July 1, 2022 - June 30, 2023

**Clearwater
Supervisory Area**

Sale Name:

South Rainy

Estimated Auction: 5/15/2023

Location: 14 miles south to Orofino, Idaho

Drainages: Rainy Creek

Class I Streams: No

Class II Streams: Yes

Silvicultural Prescription: Overstory Removal, Shelterwood

Harvest System: Ground based

APPROXIMATE

ACREAGE:
143 acres

VOLUME:
5,670 MBF

Timber Sale Legal Description

Subsection	Section	Township	Range
Pts. NESE	20	37N	04E
Pts. SW	21	37N	04E

Sale Name:

Upper McKinnon

Estimated Auction: 5/1/2023

Location: 10.5 miles southwest to Orofino, Idaho

Drainages: McKinnon Creek

Class I Streams: No

Class II Streams: Yes

Silvicultural Prescription: Clearcut

Harvest System: Ground based, cable yarding

APPROXIMATE

ACREAGE:
221 acres

VOLUME:
6,430 MBF

Timber Sale Legal Description

Subsection	Section	Township	Range
Pts. NW	4	37N	03E
Pts. NWSW	4	37N	03E
Pts. SE	4	37N	03E
Pts. S2NE	4	37N	03E
Pts. E2NE	5	37N	03E

IDAHO DEPARTMENT OF LANDS FY23 TIMBER SALE PLAN

July 1, 2022 - June 30, 2023

Clearwater Supervisory Area

Sale Name:

Whiskey 7

Estimated Auction: 4/1/2023

Location: 10 miles southeast to Pierce, Idaho

Drainages: Crooked Creek, Whiskey Creek

Class I Streams: No

Class II Streams: Yes

Silvicultural Prescription: Overstory Removal

Harvest System: Ground based

APPROXIMATE
ACREAGE: 188 acres
VOLUME: 800 MBF

Timber Sale Legal Description

Subsection	Section	Township	Range
Pts. Gov Lot 4, Pts. SESW	18	37N	4E
Pts. Gov Lot 1, Pts. NENW	19	37N	4E
Pts. Gov Lots 3&4, Pts. E2SW, Pts. NWSE	19	37N	4E
Pts. NE, Pts. E2NW, Pts. SE	7	37N	4E
Pts. NWNW	8	37N	4E

Sale Name:

White Cedar

Estimated Auction: 4/15/2023

Location: 8 miles southwest to Orofino, Idaho

Drainages: Hodson creek and Whites Creek

Class I Streams: No

Class II Streams: Yes

Silvicultural Prescription: Overstory Removal, Seedtree

Harvest System: Ground based, cable yarding

APPROXIMATE
ACREAGE: 305 acres
VOLUME: 4,600 MBF 3,400 Poles

Timber Sale Legal Description

Subsection	Section	Township	Range
Pts. SW	25	38N	03E
Pts. E2SW, Pts. W2SE	27	38N	03E
Pts. SENE	33	38N	03E
Pts. W2NE, Pts. NW	34	38N	03E
Pts. SWNE, Pts. NENW, Pts. S2NW, Pts. NESW, Pts. NWSE	36	38N	03E

Supervisory Area Totals: Clearwater

Additional Small Volume Sales:	890 MBF, 1500 acres
Supervisory Area Acres:	3,814 acres
Supervisory Area Total Sawlog:	47,210 MBF
Supervisory Area Total Cedar Poles:	3,400 Cedar Poles

IDAHO DEPARTMENT OF LANDS FY23 TIMBER SALE PLAN

July 1, 2022 - June 30, 2023

Ponderosa
Supervisory Area

Sale Name:
Milwaukee Line

APPROXIMATE
ACREAGE: 300 acres
VOLUME: 10,500 MBF
500 Poles

Estimated Auction: 5/1/2023
Location: 3 miles NE of Elk River
Drainages: Bull Run and Cameron Creeks
Class I Streams: Yes
Class II Streams: Yes
Silvicultural Prescription: Clearcut, Seedtree
Harvest System: Ground based, cable yarding

Timber Sale Legal Description

Subsection	Section	Township	Range
Pts Gov Lots 1 & 2, Pts S2NW, Pts NESW	04	039N	002E
Pts Gov Lots 1 - 4, Pts SWNE, Pts S2NW	05	039N	002E
Pts Gov Lot 1	06	039N	002E
Pts NE, Pts SENW, Pts S2	32	040N	002E
Pts SW	33	040N	002E

Sale Name:
Cherry Pit

APPROXIMATE
ACREAGE: 630 acres
VOLUME: 5,445 MBF

Estimated Auction: 4/15/2023
Location: 1 miles NE of Deary, ID
Drainages: Brush Creek
Class I Streams: No
Class II Streams: Yes
Silvicultural Prescription: Seedtree
Harvest System: Ground based, cable yarding

Timber Sale Legal Description

Subsection	Section	Township	Range
Pts Gov Lot 1, Pts Gov Lots 2-3	18	040N	001W
Pts N2NE, Pts S2NE, Pts E2NW, Pts E2SW, Pts N2SE	13	040N	002W

IDAHO DEPARTMENT OF LANDS FY23 TIMBER SALE PLAN

July 1, 2022 - June 30, 2023

Ponderosa
Supervisory Area

Sale Name:

Elk Hyde

Estimated Auction: 5/1/2023

Location: 2.5 Miles West of Elk River, ID

Drainages: Seastem, Shuttuck, and Cameron Creek

Class I Streams: No

Class II Streams: Yes

Silvicultural Prescription: Clearcut

Harvest System: Ground based

APPROXIMATE
ACREAGE: 169 acres
VOLUME: 6,740 MBF

Timber Sale Legal Description

Subsection	Section	Township	Range
Pts S2SE	20	040N	002E
Pts N2NE, Pts SENW, Pts NESW, Pts SE	29	040N	002E
Pts N2NE	32	040N	002E

Sale Name:

Last Teakean Cedar

Estimated Auction: 11/1/2022

Location: 4 miles east of Southwick, ID

Drainages: Cedar Creek

Class I Streams: No

Class II Streams: Yes

Silvicultural Prescription: Clearcut, Seedtree

Harvest System: Ground based, cable yarding

APPROXIMATE
ACREAGE: 267 acres
VOLUME: 9,050 MBF
2,730 Poles

Timber Sale Legal Description

Subsection	Section	Township	Range
Pts Gov Lots 1, 2	31	038N	001E
Pts NE, Pts E2NW, Pts NESW, Pts SE	36	038N	001W

Sale Name:

Moose Drool

Estimated Auction: 3/15/2023

Location: 3 miles NW of Bovill, ID

Drainages: Moose Creek, Pottlatch River

Class I Streams: Yes

Class II Streams: Yes

Silvicultural Prescription: Clearcut, Overstory Removal

Harvest System: Ground based, cable yarding

APPROXIMATE
ACREAGE: 270 acres
VOLUME: 3,000 MBF

Timber Sale Legal Description

Subsection	Section	Township	Range
Pts N2, Pts NESW, Pts N2SE	22	041N	001W
Pts Gov Lots 2, 3, 6, Pts E2NW, Pts NESW, Pts W2SE	23	041N	001W

IDAHO DEPARTMENT OF LANDS FY23 TIMBER SALE PLAN

July 1, 2022 - June 30, 2023

Ponderosa
Supervisory Area

Sale Name:

Powder Brush

Estimated Auction: 3/1/2023

Location: 6 miles east of Deary, ID

Drainages: Brush Creek, Corral Creek, Potlatch River, Hog Meadow Creek

Class I Streams: Yes

Class II Streams: Yes

Silvicultural Prescription: Clearcut, Overstory Removal, Seedtree

Harvest System: Ground based, cable yarding

APPROXIMATE

ACREAGE:
339 acres

VOLUME:
7,790 MBF

Timber Sale Legal Description

Subsection	Section	Township	Range
Pts SENW	19	040N	001W
Pts SWNE; Pts S2NW; Pts SW	29	040N	001W
Pts SESW	30	040N	001W
Pts SESW, Pts S2SE	35	041N	001W
Pts W2SW, Pts SESW, Pts SWSE	36	041N	001W

Sale Name:

Purdue Delivered Products

Estimated Auction: 7/1/2022

Location: 2 Miles N of Bovill

Drainages: Purdue Creek

Class I Streams: No

Class II Streams: No

Silvicultural Prescription: Overstory Removal

Harvest System: Ground based, cable yarding

APPROXIMATE

ACREAGE:
164 acres

VOLUME:
1,320 MBF
250 Poles

Timber Sale Legal Description

Subsection	Section	Township	Range
Pts NE, Pts E2NW, Pts SWNW, Pts N2S2	16	041N	001E

IDAHO DEPARTMENT OF LANDS FY23 TIMBER SALE PLAN

July 1, 2022 - June 30, 2023

Ponderosa
Supervisory Area

Sale Name:

SuPurduePer

Estimated Auction: 7/1/2022

Location: 2 Miles N of Bovill, ID

Drainages: Purdue Creek

Class I Streams: No

Class II Streams: Yes

Silvicultural Prescription: Clearcut, ROW

Harvest System: Ground based, cable yarding

APPROXIMATE

ACREAGE:
114 acres

VOLUME:
3,745 MBF

Timber Sale Legal Description

Subsection	Section	Township	Range
Pts NWNE, Pts NW, Pts NWSW	16	041N	001E
Pts E2NE, Pts NESE	17	041N	001E

Supervisory Area Totals: Ponderosa

Additional Small Volume Sales: 200 MBF, 20 acres
 Supervisory Area Acres: 2,273 acres
 Supervisory Area Total Sawlog: 47,790 MBF
 Supervisory Area Total Cedar Poles: 3,480 Cedar Poles

IDAHO DEPARTMENT OF LANDS FY23 TIMBER SALE PLAN

July 1, 2022 - June 30, 2023

**Maggie Creek
Supervisory Area**

Sale Name:

Big Cat OSR

Estimated Auction: 7/1/2022

Location: 4 miles east of Weippe, Idaho

Drainages: Heywood Creek

Class I Streams: No

Class II Streams: Yes

Silvicultural Prescription: Overstory Removal

Harvest System: Ground based

APPROXIMATE

ACREAGE:
158 acres

VOLUME:
1,000 MBF

Timber Sale Legal Description

Subsection	Section	Township	Range
Pts. S2NE, Pts. SE	20	35N	5E
Pts. SWNW, Pts. W2SW	21	35N	5E
Pts. N2NW	28	35N	5E

Sale Name:

Cottonwood Heights

Estimated Auction: 12/1/2022

Location: 5 miles south of Weippe, Idaho

Drainages: Lolo Creek

Class I Streams: No

Class II Streams: No

Silvicultural Prescription: Seedtree, Single Tree Select

Harvest System: Ground based

APPROXIMATE

ACREAGE:
175 acres

VOLUME:
2,000 MBF

Timber Sale Legal Description

Subsection	Section	Township	Range
Pts. S2NE, Pts. S2	11	34N	4E

Sale Name:

Crane Creek Revival Cedar

Estimated Auction: 9/1/2022

Location: 8 miles southeast of Weippe, Idaho

Drainages: Crane Creek and Trout Creek

Class I Streams: No

Class II Streams: Yes

Silvicultural Prescription: Shelterwood

Harvest System: Ground based, cable yarding

APPROXIMATE

ACREAGE:
173 acres

VOLUME:
5,815 MBF
2,000 Poles

Timber Sale Legal Description

Subsection	Section	Township	Range
Pts. NWSW	1	34N	5E
Pts. N2NE, Pts. SWNE, Pts. NENW	11	34N	5E
Pts. SESW, Pts. SE	2	34N	5E

IDAHO DEPARTMENT OF LANDS FY23 TIMBER SALE PLAN

July 1, 2022 - June 30, 2023

**Maggie Creek
Supervisory Area**

Sale Name:

Dream Weaver

Estimated Auction: 7/15/2022

Location: 8 miles northeast of Weipple, Idaho

Drainages: Weaver Creek

Class I Streams: No

Class II Streams: Yes

Silvicultural Prescription: Seedtree

Harvest System: Ground based

APPROXIMATE

ACREAGE:
189 acres

VOLUME:
4,050 MBF

Timber Sale Legal Description

Subsection	Section	Township	Range
Pts. SWNE, Pts. S2NW, Pts. SW, Pts. W2SE	36	36N	5E

Sale Name:

Independence OSR

Estimated Auction: 6/1/2023

Location: 7 miles northeast of Kooskia, Idaho

Drainages: Maggie Creek and Wilson Creek

Class I Streams: No

Class II Streams: Yes

Silvicultural Prescription: Clearcut, Overstory Removal

Harvest System: Ground based

APPROXIMATE

ACREAGE:
250 acres

VOLUME:
3,700 MBF

Timber Sale Legal Description

Subsection	Section	Township	Range
Pts. NESE	16	33N	5E
Pts. S2NE, Pts. SW, Pts. W2SE	17	33N	5E
Pts. N2NW	20	33N	5E
Pts. S2NW, Pts. N2SW	26	33N	5E

Sale Name:

Log Cabin

Estimated Auction: 9/15/2022

Location: 8 miles northeast of Kooskia, Idaho

Drainages: Maggie Creek

Class I Streams: No

Class II Streams: Yes

Silvicultural Prescription: Clearcut, Overstory Removal

Harvest System: Ground based

APPROXIMATE

ACREAGE:
186 acres

VOLUME:
3,250 MBF

Timber Sale Legal Description

Subsection	Section	Township	Range
Pts. NW, Pts. N2SW, Pts. SWSW	10	33N	5E
Pts. NE, Pts. E2NW, Pts. E2SW	9	33N	5E

IDAHO DEPARTMENT OF LANDS FY23 TIMBER SALE PLAN

July 1, 2022 - June 30, 2023

**Maggie Creek
Supervisory Area**

Sale Name:

Mussel Sprouts

Estimated Auction: 5/1/2023

Location: 4.5 miles east of Weippe, Idaho

Drainages: Burcham Creek and Jim Brown Creek

Class I Streams: No

Class II Streams: Yes

Silvicultural Prescription: ROW, Seedtree

Harvest System: Ground based

APPROXIMATE

ACREAGE:
284 acres

VOLUME:
6,300 MBF

Timber Sale Legal Description

Subsection	Section	Township	Range
Pts. SENW, Pts. SE	4	35N	5E
Pts. SESW, Pts. S2SE	5	35N	5E
Pts. N2NE	8	35N	5E
Pts. N2, Pts. SESW, Pts. W2SE	9	35N	5E

Sale Name:

Rocky North

Estimated Auction: 5/15/2023

Location: 8 miles northeast of Kooskia, Idaho

Drainages: Maggie Creek

Class I Streams: No

Class II Streams: Yes

Silvicultural Prescription: Clearcut, Overstory Removal, Seedtree

Harvest System: Ground based

APPROXIMATE

ACREAGE:
230 acres

VOLUME:
3,540 MBF

Timber Sale Legal Description

Subsection	Section	Township	Range
Pts. SENE, Pts. W2E2, Pts. W2	15	33N	5E
Pts. S2NE	16	33N	5E

Supervisory Area Totals: Maggie Creek

Additional Small Volume Sales: 345 MBF, 100 acres
 Supervisory Area Acres: 1,745 acres
 Supervisory Area Total Sawlog: 30,000 MBF
 Supervisory Area Total Cedar Poles: 2,000 Cedar Poles

IDAHO DEPARTMENT OF LANDS FY23 TIMBER SALE PLAN

July 1, 2022 - June 30, 2023

Payette Lakes
Supervisory Area

Sale Name:

Deet Ton

Estimated Auction: 8/1/2022

Location: 8 miles E to New Meadows

Drainages: Weiser

Class I Streams: No

Class II Streams: Yes

Silvicultural Prescription: Overstory Removal

Harvest System: Ground based

APPROXIMATE

ACREAGE:
121 acres

VOLUME:
965 MBF
5,462 Tons

Timber Sale Legal Description

Subsection	Section	Township	Range
Pts. W2NE, Pts. W2, Pts. SE	10	19N	01W
Pts. N2	15	19N	01W

Sale Name:

Fall East Ton

Estimated Auction: 10/1/2022

Location: 4 miles SW to McCall

Drainages: Fall Creek

Class I Streams: Yes

Class II Streams: Yes

Silvicultural Prescription: Clearcut, Seedtree

Harvest System: Ground Based

APPROXIMATE

ACREAGE:
390 acres

VOLUME:
5,205 MBF
29,454 Tons

Timber Sale Legal Description

Subsection	Section	Township	Range
Pts L4, Pts SWNW	1	18N	3E
Pts L1, L2	2	18N	3E
Pts L3, L4	23	19N	3E
Pts SW	25	19N	3E
Pts E2NE, Pts L1, L2, Pts E2SE, Pts L3, L4	26	19N	3E
Pts E2SE, Pts L3, L4	35	19N	3E
Pts NESW, Pts W2SW	36	19N	3E

IDAHO DEPARTMENT OF LANDS FY23 TIMBER SALE PLAN

July 1, 2022 - June 30, 2023

**Payette Lakes
Supervisory Area**

Sale Name:

Fools Gold Ton

Estimated Auction: 10/15/2022
 Location: 8 Miles NW to Donnelly
 Drainages: Goldfork
 Class I Streams: Yes
 Class II Streams: Yes
 Silvicultural Prescription: Seedtree
 Harvest System: Ground based

APPROXIMATE
 ACREAGE: 548 acres
 VOLUME: 4,305 MBF
 24,372 Tons

Timber Sale Legal Description

Subsection	Section	Township	Range
Pts N2NE, NW, S2	36	16N	4E

Sale Name:

Mudpuppy Ton

Estimated Auction: 9/20/2022
 Location: 5 mi. SE to New Meadows, ID
 Drainages: Mud Creek
 Class I Streams: No
 Class II Streams: Yes
 Silvicultural Prescription: Clearcut, Overstory Removal, Seedtree
 Harvest System: Ground based

APPROXIMATE
 ACREAGE: 311 acres
 VOLUME: 3,205 MBF
 18,140 Tons

Timber Sale Legal Description

Subsection	Section	Township	Range
Pts.N2, Pts.NESW, Pts.SE	31	20N	01E

Sale Name:

Rocky B Ton

Estimated Auction: 4/1/2023
 Location: 6 miles NE of Cascade, ID
 Drainages: Beaver Creek
 Class I Streams: No
 Class II Streams: Yes
 Silvicultural Prescription: Overstory Removal, Seedtree
 Harvest System: Ground based

APPROXIMATE
 ACREAGE: 232 acres
 VOLUME: 2,350 MBF
 13,312 Tons

Timber Sale Legal Description

Subsection	Section	Township	Range
Pts L 2-3	3	14N	04E
Pts SWNE, Pts NW, Pts N2SW, Pts SESW, Pts SE	34	15N	04E

IDAHO DEPARTMENT OF LANDS FY23 TIMBER SALE PLAN

July 1, 2022 - June 30, 2023

**Payette Lakes
Supervisory Area**

Sale Name:

Stony Point Ton

Estimated Auction: 4/15/2023

Location: 10 Miles NW of Council, ID

Drainages: Johnson Creek

Class I Streams: No

Class II Streams: Yes

Silvicultural Prescription: Clearcut, Seedtree, Single Tree Select

Harvest System: Ground based

APPROXIMATE

ACREAGE:
242 acres

VOLUME:
3,220 MBF
18,207 Tons

Timber Sale Legal Description

Subsection	Section	Township	Range
Pts S2SW, Pts S2SE	29	17N	02W
Pts SESE	30	17N	02W
Pts NE, Pts NWSE	31	17N	02W
Pts N2NE, Pts SENE, Pts NW	32	17N	02W

Sale Name:

West Mud Ton

Estimated Auction: 10/15/2022

Location: 7 mi. SE to New Meadow

Drainages: Mud Creek

Class I Streams: No

Class II Streams: Yes

Silvicultural Prescription: Clearcut, Overstory Removal, Seedtree

Harvest System: Ground based

APPROXIMATE

ACREAGE:
245 acres

VOLUME:
1,940 MBF
10,980 Tons

Timber Sale Legal Description

Subsection	Section	Township	Range
Pts.SWNE, Pts.W2, Pts.NWSE	16	20N	01E

Supervisory Area Totals: Payette Lakes

Supervisory Area Acres: 2,089 acres
 Supervisory Area Total Sawlog: 21,190 MBF
 Supervisory Area Total Sawlog (Ton Sales): 119,927 Tons

IDAHO DEPARTMENT OF LANDS FY23 TIMBER SALE PLAN

July 1, 2022 - June 30, 2023

Southwest
Supervisory Area

Sale Name:

High Valley

Estimated Auction: 8/1/2022

Location: 6 miles southwest to Smiths Ferry, Idaho

Drainages: Little Squaw Creek

Class I Streams: Yes

Class II Streams: Yes

Silvicultural Prescription: Clearcut, Group Selection

Harvest System: Ground Based

APPROXIMATE
ACREAGE: 556 acres
VOLUME: 7,117 MBF

Timber Sale Legal Description

Subsection	Section	Township	Range
Pts. All	36	11N	02E

Sale Name:

New York Ton

Estimated Auction: 4/1/2023

Location: 3 miles southwest to Idaho City, Idaho

Drainages: Thorn Creek

Class I Streams: No

Class II Streams: Yes

Silvicultural Prescription: Group Selection

Harvest System: Ground based

APPROXIMATE
ACREAGE: 330 acres
VOLUME: 2,000 MBF

Timber Sale Legal Description

Subsection	Section	Township	Range
Pts. S2, Pts. SENW, Pts. SWNE	4	05N	05E
Pts. Gov. Lots 11, 10, 9	4	05N	05E
Pts. E2SE	8	05N	05E
Pts. Gov. Lots 7, 5, 6	8	05N	05E
Pts. N2, Pts. E2SW	9	05N	05E

IDAHO DEPARTMENT OF LANDS FY23 TIMBER SALE PLAN

July 1, 2022 - June 30, 2023

Southwest
Supervisory Area

Sale Name:

Spanish Terrace Ton

Estimated Auction: 6/1/2023

Location: 2.5 miles north to Idaho City, Idaho

Drainages: Grimes Creek, Mbres Creek

Class I Streams: No

Class II Streams: Yes

Silvicultural Prescription: Commercial Thin, Group Selection

Harvest System: Ground based

APPROXIMATE

ACREAGE:
1,620 acres

VOLUME:
6,900 MBF

Timber Sale Legal Description

Subsection	Section	Township	Range
Pts. L 1-3, Pts MS31	10	06N	05E
Pts. NE, Pts. S2	10	06N	05E
Pts. NWNW	11	06N	05E
Pts. W2NW, Pts. SW, Pts. SWSE	14	06N	05E
Pts. N2, Pts. N2SE	15	06N	05E
Pts. L 5-7, Pts. L 9-11	16	06N	05E
Pts. W2SE, Pts. S2SW, Pts. SESE	16	06N	05E
Pts. E2SE, Pts. SWSE	17	06N	05E
Pts. L 3-4, Pts. S2NW, Pts SW	3	06N	05E
Pts. L 1-2	4	06N	05E
Pts. E2NE	9	06N	05E

Supervisory Area Totals: Southwest

Supervisory Area Acres: 2,506 acres
Supervisory Area Total Sawlog: 16,017 MBF

IDAHO DEPARTMENT OF LANDS FY23 TIMBER SALE PLAN

July 1, 2022 - June 30, 2023

Eastern Idaho
Supervisory Area

Sale Name:

Lyons Creek Ton

Estimated Auction: 5/1/2023

Location: 22 miles northwest to Rexburg, Idaho

Drainages: Lyons Creek

Class I Streams: No

Class II Streams: No

Silvicultural Prescription: Shelterwood

Harvest System: Ground based

APPROXIMATE
ACREAGE: 325 acres
VOLUME: 1,500 MBF
10,125 Tons

Timber Sale Legal Description

Subsection	Section	Township	Range
Pts. S2NW, Pts. SW	15	4N	41E
Pts. S2NE, Pts. S2	16	4N	41E
Pts. N2NW	22	4N	41E

Sale Name:

Time Spring Ton

Estimated Auction: 4/1/2023

Location: 15 miles south to Swan Lake, Idaho

Drainages: Cottonwood Creek

Class I Streams: No

Class II Streams: Yes

Silvicultural Prescription: Overstory Removal

Harvest System: Ground based

APPROXIMATE
ACREAGE: 1,400 acres
VOLUME: 3,500 MBF
23,625 Tons

Timber Sale Legal Description

Subsection	Section	Township	Range
Pts. SE	36	10S	38E
Pts. SW	31	10S	39E
Pts. N2	18	11S	39E
Pts. W2	5, 8	11S	39E
Pts. All	6, 7	11S	39E

Supervisory Area Totals: Eastern Idaho

Supervisory Area Acres: 1,725 acres
Supervisory Area Total Sawlog: 5,000 MBF
Supervisory Area Total Sawlog (Ton Sales): 33,750 Tons

July 1, 2022 - June 30, 2023

FY 2023 Annual Sales Plan Statewide Summary

Statewide Totals

Grand Total Acres: 23,391 acres
Grand Total Sawlog: 327,757 MBF
Grand Total Sawlog (Ton Sales): 153,677 Tons
Grand Total Cedar Poles: 22,118 Cedar Poles

This Fiscal Year 2023 Proposed Timber Sale Plan will be presented to the Idaho Board of Land Commissioners at the April 2022 board meeting for approval.

All timber sales listed on the 2023 Proposed Timber Sale Plan have been available for public review on the Notice of Proposed Future Sales on the IDL timber sale website since February 2021.

Comments regarding this proposed plan will be accepted until March 31, 2022. Send comments, preferably via email, to:

Jeremy Shawver
Idaho Department of Lands
Timber Sale Program Manager
Email address: jshawver@idl.idaho.gov
3284 W.Industrial Loop
Coeur d'Alene, ID 83815

