

## Summary of Idaho Shared Stewardship Successes—2019 through 2021

11/23/21

Ara Andrea—Idaho Shared Stewardship Coordinator

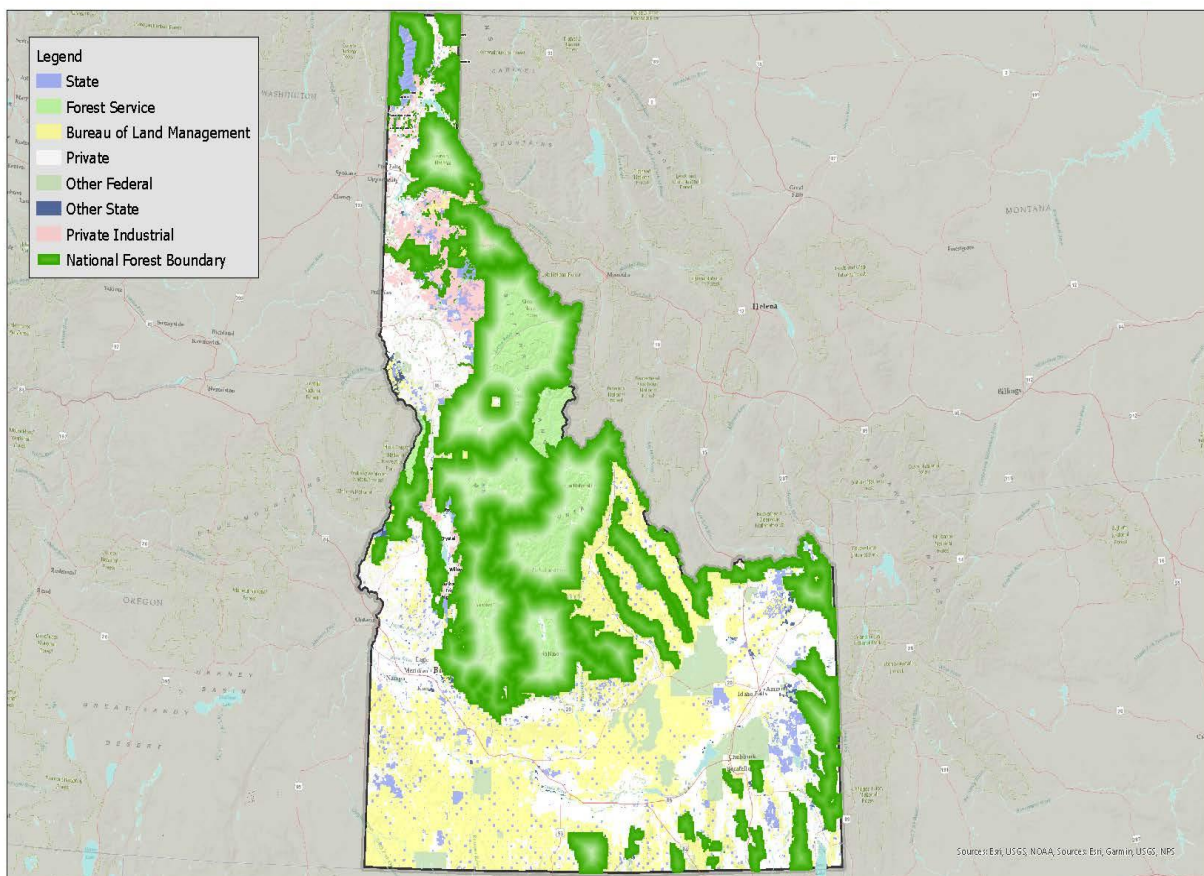
- The Idaho Shared Stewardship Initiative was established in 2018 with the signing of an agreement between IDL and the USFS, with goals of doubling the number of acres treated on Idaho’s national forests and coordinating cross-boundary projects across multiple ownerships of the state’s forestlands. These projects are designed to mitigate the risk to timber and communities posed by millions of acres of Idaho forests designated as “high risk” for potential catastrophic wildfire and insect and disease damage.
- In 2019, Governor Little appointed 18 members, representing 16 different interests, to serve on the Governor’s Shared Stewardship Advisory Group (SSAG). This group, in cooperation with Idaho’s Shared Stewardship team, has finalized a list of accomplishment metrics, or KPIs, to help define “success” of our cross-boundary efforts across the state. [No Boundaries Forestry | Department of Lands \(idaho.gov\)](#)
- Using forest-health and wildfire-risk geospatial datasets from Idaho’s 2020 Forest Action Plan, overlaid with Idaho national forests’ wildfire-risk datasets, fire-risk modeling from the USFS Rocky Mountain Research Station, and incorporating local land-management knowledge, the USFS and IDL delineated two Shared Stewardship Priority Landscapes in which inter-agency resources can be focused to implement cross-boundary forest treatments where they can 1) make the biggest impact and 2) pragmatically be carried out.
- Shared Stewardship Positions:
  - Full-time IDL Idaho Shared Stewardship Coordinator
  - 2 USFS employees “shared” with IDL as regional Shared Stewardship Coordinators (Jeff Lau from the IPNF and Lynn Oliver from the Boise N. F.)
  - 2 IDL GNA-Shared Stewardship Foresters
  - 2 contracted forestry consultants to assist with landowner outreach and assistance
- Shared Stewardship, following on the heels of successful GNA relationships built with the USFS and the BLM, brought together cross-boundary planning and implementation teams consisting of national forest ranger districts, BLM districts, NRCS District Conservationists, IDL Private Forestry Specialists, IDL GNA-Shared Stewardship Foresters, contracted forestry consultants, and long-term sub-grantees (or cooperators) to start education, outreach and landowner-assistance activities to acquire buy-in and enthusiasm from private forestland owners. These teams meet regularly to plan and implement fuels-reduction treatments on private forestlands.
- Shared Stewardship Funding and Support:
  - 2 USFS S&PF grant awards to support Shared Stewardship cross-boundary positions and project work: \$1,050,000 to date
  - NRCS funding of \$125,000 annually to support 3 Shared Stewardship positions
  - State General Fund support, totaling over \$400K per year for Shared Stewardship cross-boundary work.
  - (*Coming*) Funding from major utilities to support their new “wildfire-prevention” programs in at-risk forestlands in their customer bases.
- Descriptive StoryMap Tours can be seen, for both GNA and Shared Stewardship projects, on Idaho’s **#NoBoundariesForestry** website (by typing in “noboundariesforestry.idaho.gov” in the URL/web-address line).

## Statewide Activities

- In FFY 21, Idaho’s national forests completed treatments on 44,300 acres and placed 72,800 acres into contract. Using 50,000 acres as our baseline measure to determine progress towards “doubling the acres treated,” in the three fiscal years since the agreement was signed, the annual average acres treated on all seven national forests was over 61,000 acres per year—an approximate 22% increase.

	<b>Baseline for Doubling Acres Treated</b>	<b>Avg Acres Per Year 2019-2021</b>	<b>2025 Target Acres</b>
Treated Acres	50,000	61,177	100,000

- In FFY 22, **Forest Landscape Restoration Program (CFLRP)** projects on the Idaho Panhandle, Payette, and Boise national forests were selected for funding. These financial resources, as well as potentially other resources, including Infrastructure Bill funding, will allow the Forest Service to increase the treated acres in coming years.



- Idaho's Shared Stewardship teams completed two rounds of outreach post-card mail-outs to targeted landowners in the northern and southern priority landscapes. This marketing post-card includes a self-addressed stamped return post-card that landowners can drop in the mail and a link that enables landowners to put information directly into IDL's database of targeted forestlands.

#NOBOUNDARIESFORESTRY

---

# THIN THE THREAT

---

Forest have risks - We have solutions

---



Yes! Sign me up to learn more about what we can do together!

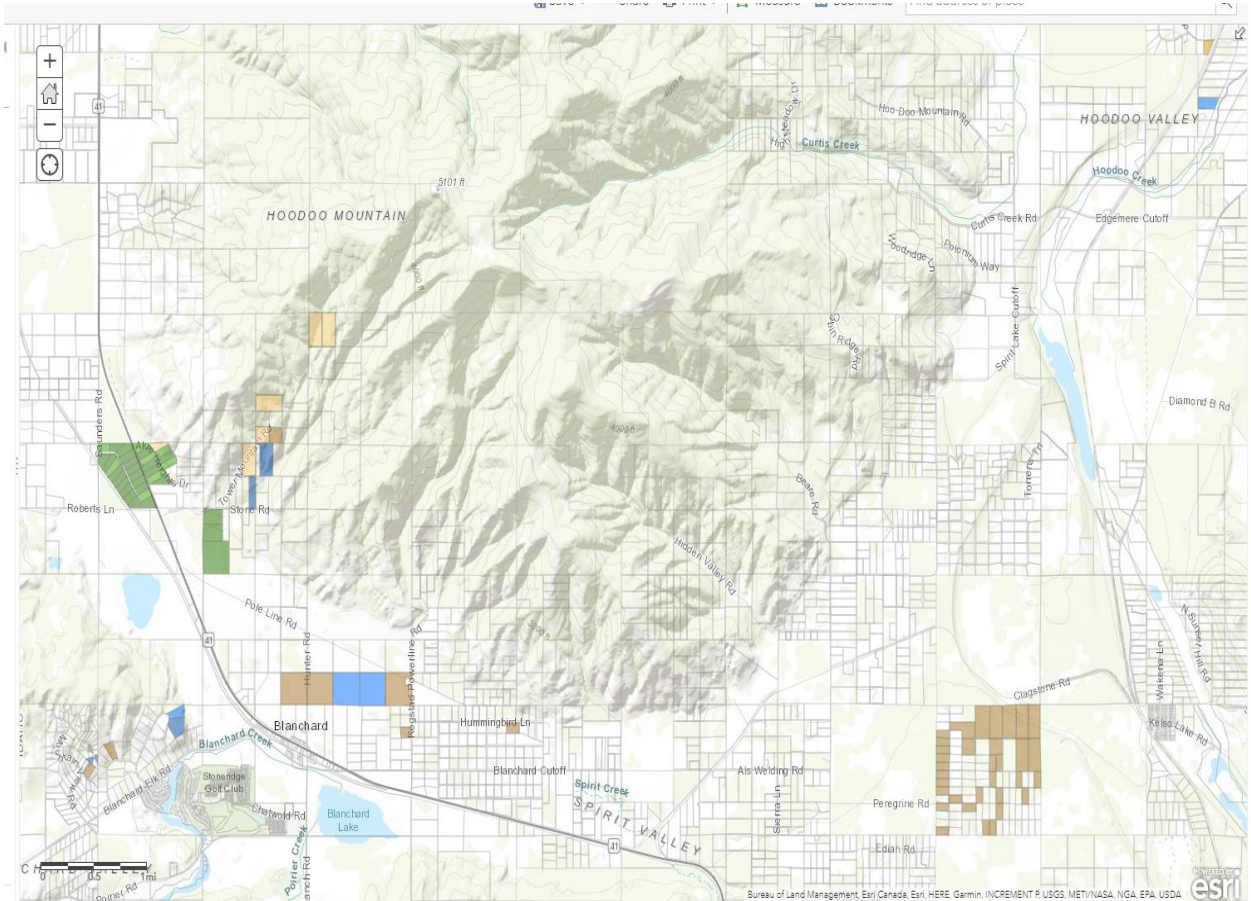


(GHOST PARCEL ID PLACEHOLDER)

---

-

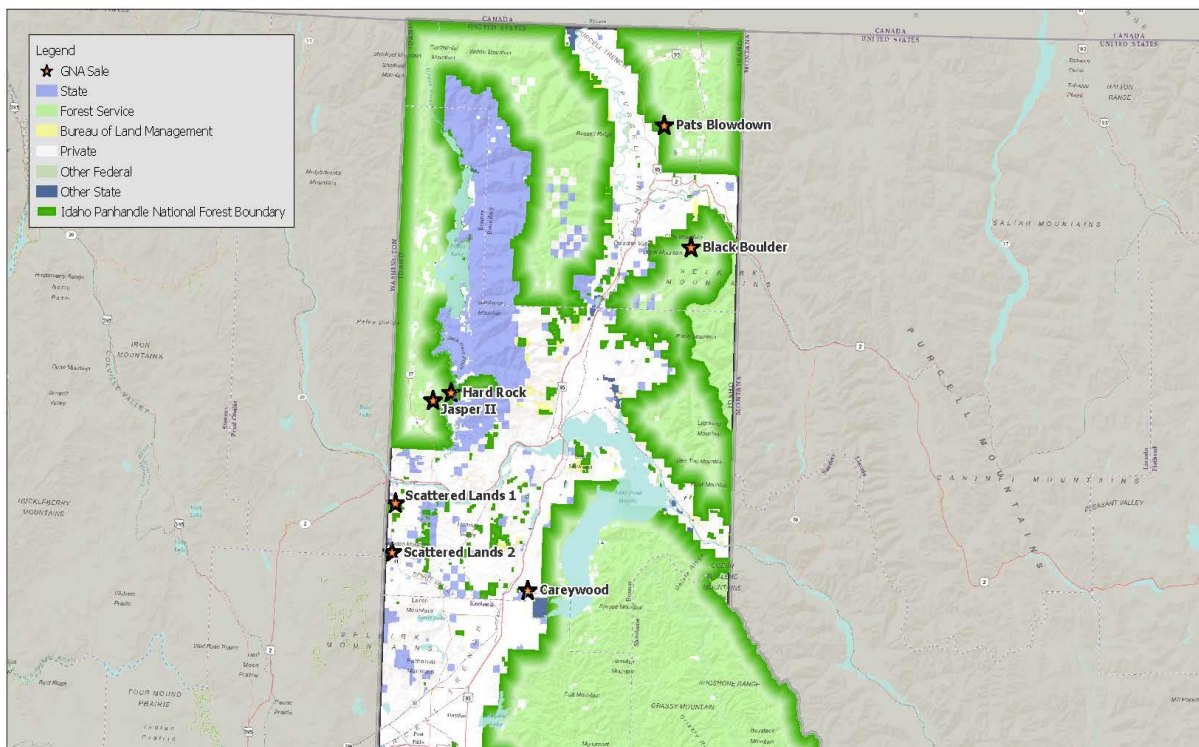
- All Shared Stewardship “team” members can communicate landowner-assistance progress with each other through an IDL-created landowner-tracking geodatabase, accessible by all partners through ArcGIS Online.

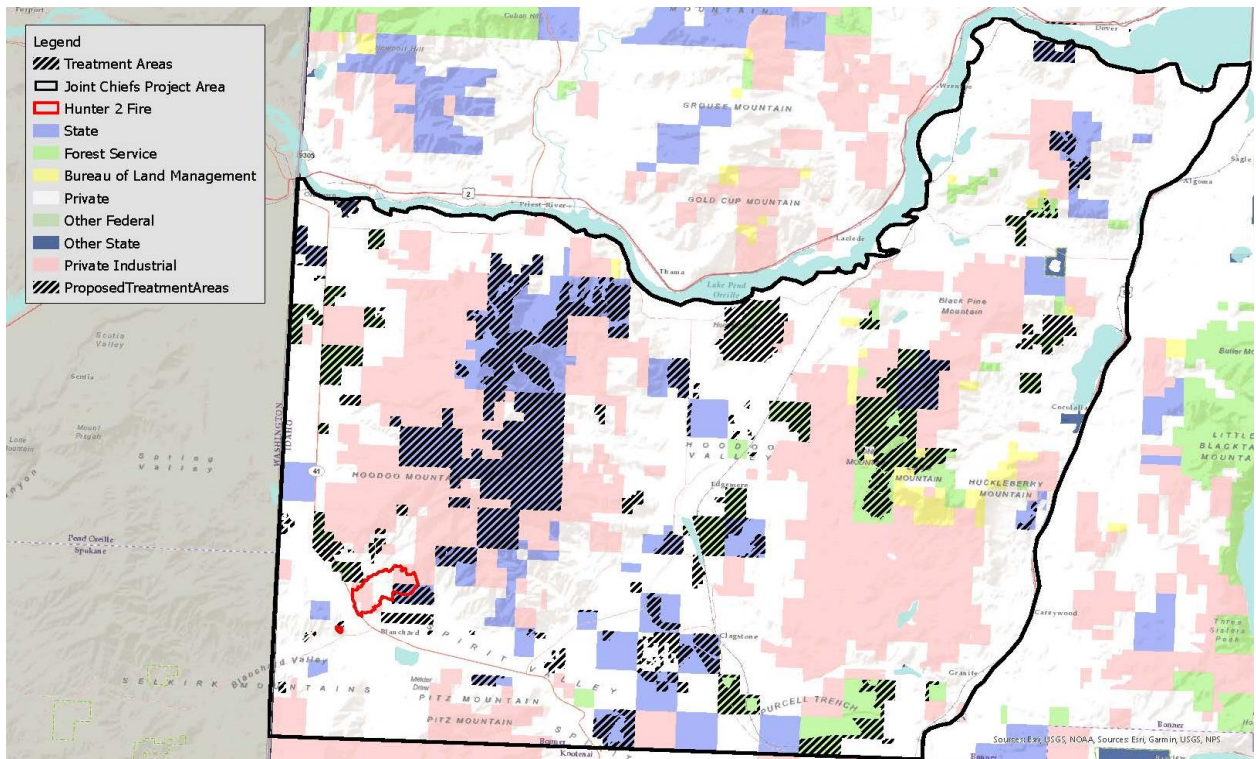


- University of Idaho Extension is adding additional *Strengthening Forest Stewardship Skills* classes in Shared Stewardship focal areas within the north and south Priority Landscapes. Classes that equip family forestland owners to write their own management plans and identify forest health issues on their properties are being targeted to landowners in Bonner and Valley counties to add capacity to our landowner-assistance efforts—and to help expedite the funding-assistance application processes.

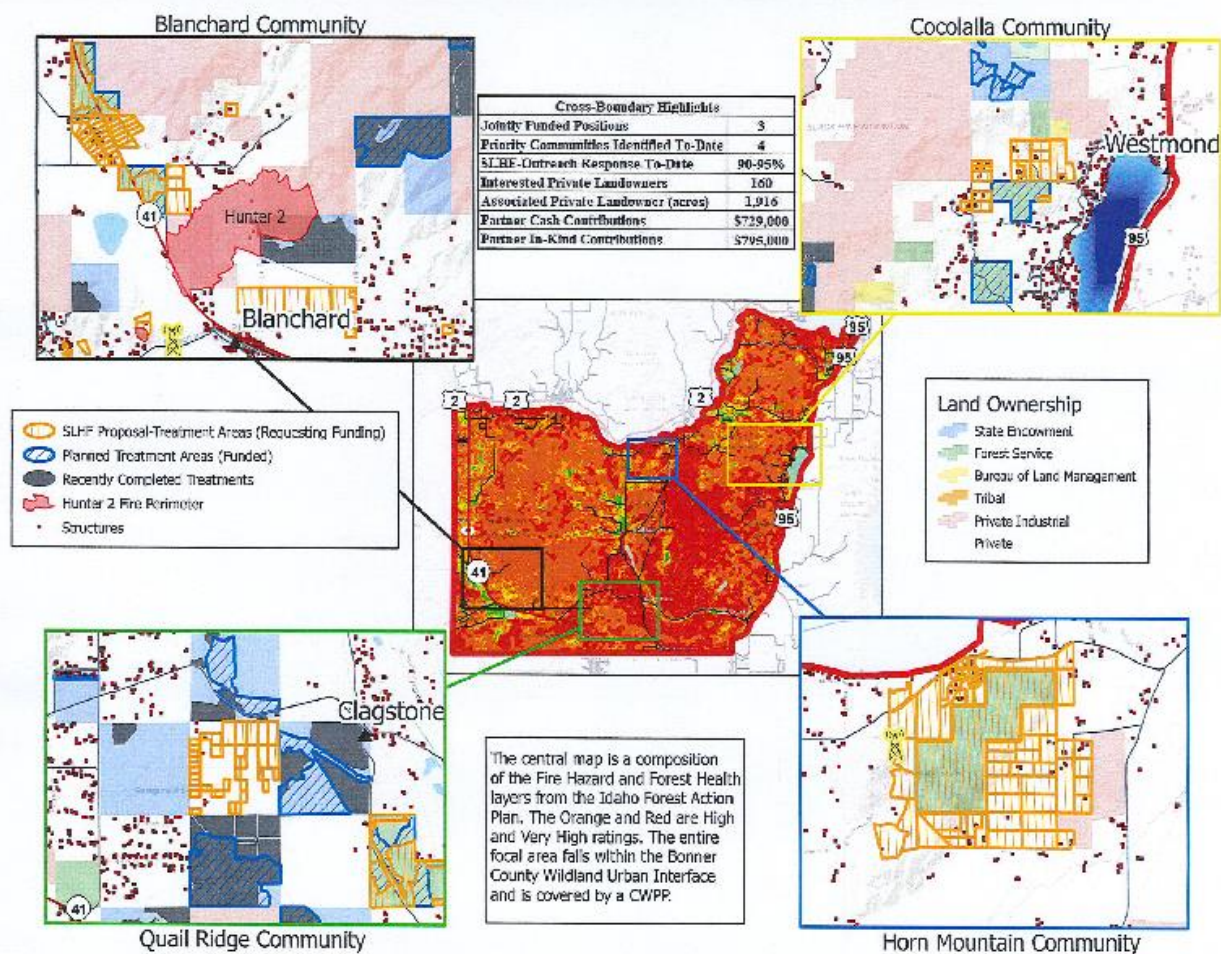
## Northern Priority Landscape:

- In the northern Priority Landscape, over the last year, 2,905 acres of the Idaho Panhandle National Forests (IPNF) were harvested, thinned or received fuels-reduction treatments, with 492 of these acres administered by IDL's GNA foresters.
- Around the IPNF's projects, over 7000 acres were harvested or treated on state endowment lands throughout IDL's Pend Oreille Lake Supervisory Area, with 2,000 of these state-land acres being within the northern Priority Landscape.
- Over the last 4 years, throughout Bonner County, over 800 acres of private forestlands have been treated using NRCS EQIP funding assistance. An additional 71 acres are in the EQIP application queue to receive funding assistance in 2022.
- Since October 2020, approximately 170 acres of private forestlands have been treated in Bonner County with federal fire-mitigation grant funds through the county's BonFire program.



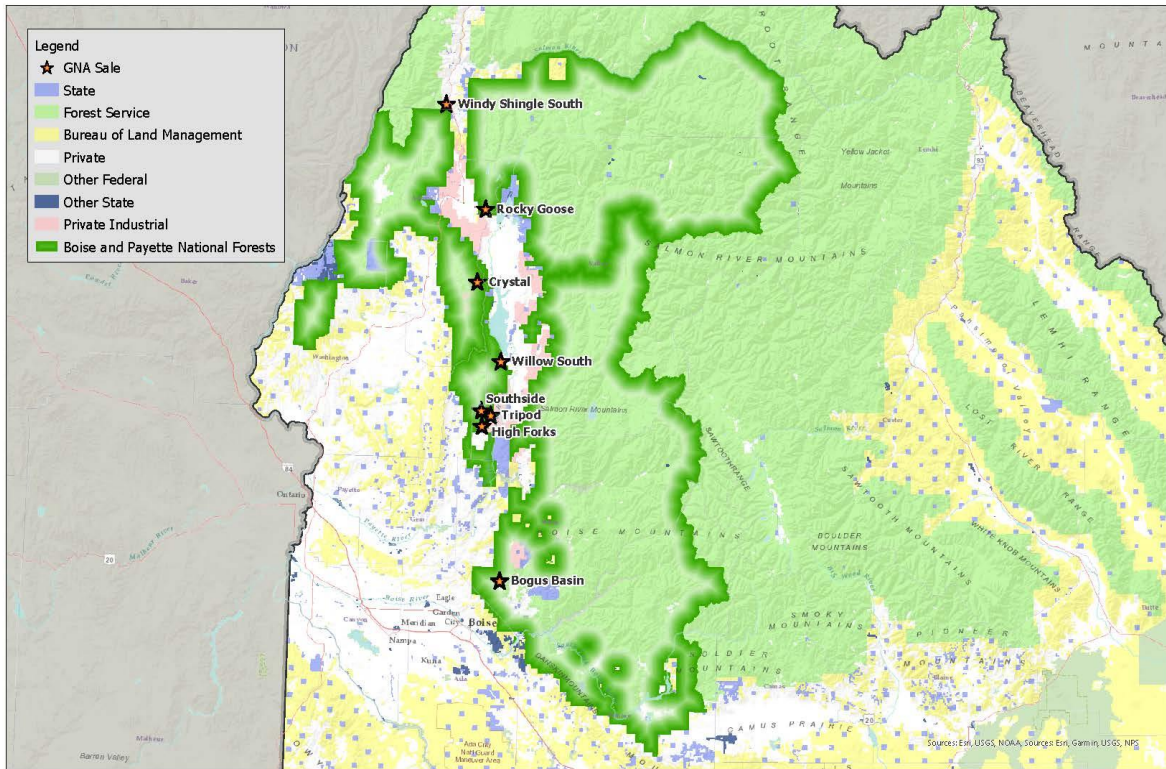


- Over the last year, our north-Idaho Shared Stewardship team has been focusing on private lands intermingled among the IPNF's *Scattered Lands* project in southwest Bonner County.
- Over 7,000 additional acres on the IPNF will have GNA-administered treatments done in the project over the next 5 years.
- This *Scattered Lands* cross-boundary focal area has been selected to receive a **Joint Chiefs' Landscape Restoration Partnership Project** award. and has been selected by the USFS as Region 1's *Shared Stewardship pilot project*, showcasing Idaho's successes.
- The north-Idaho Shared Stewardship team has targeted education and outreach to specific landowners whose forested parcels are located strategically close to treatments being done on the national forest.
- Here, interspersed among the *Scattered Lands* project treatments, are 4 developments, or neighborhood communities, where we're focusing our outreach and landowner-assistance efforts. This includes the Blanchard area where we're addressing landowners' needed treatments—after the Hunter II fire threatened many of these homes and neighborhoods in 2020.



- In 2021, *Avista Corporation*, the primary utility serving eastern Washington and north Idaho, has agreed to help fund fuels-reduction treatments on private lands around Avista's distribution and transmission lines in this Scattered Lands cross-boundary project area, further protecting communities and homes within the company's customer base. This corporate support is in compliance with Avista's new Wildfire Resiliency Plan.

**Southern Priority Landscape:**

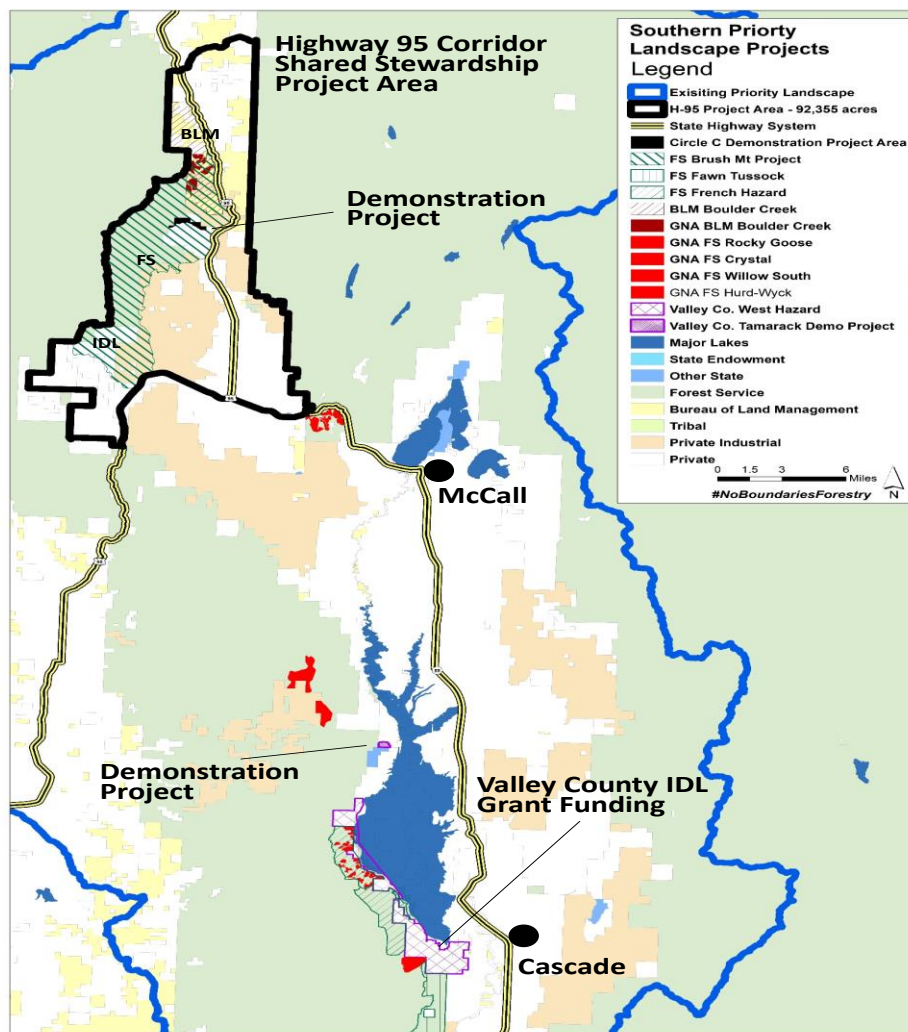


- Over the last year in the southern Priority Landscape, the Boise and Payette National Forests have implemented harvesting or fuels-reduction treatments on 12,502 acres, with 1,020 of those acres administered by IDL’s GNA foresters
  - In 2021, completed harvesting operations and fuels-reduction-treatments on the Boise National Forest and Payette National Forest—along with planned harvesting volumes and treated acres in 2022—are listed below:

<b>Southern Priority Landscape</b>	
<b>2021</b>	<b>2022</b>
Payette Timber Volume – 26.15 mbf Boise Timber Volume – 16.09 mbf	Payette Timber Volume – 25.75 mbf Boise Timber Volume – 10.81 mbf <sup>1</sup>
<b>Total MBF – 42.24</b>	<b>Total MBF – 36.56</b>
Payette Timber Acres - 1726 acres Payette Fuel + NCT + Pile Burning – 6984 acres Boise Timber Acres – 2712.7 acres Boise Fuel + NCT + Pile Burning – 1080.2 acres	Payette Timber Acres - 2363 acres Payette Fuel + NCT + Pile Burning - 6500 acres Boise Timber Acres – 2129 acres. Boise Fuel + NCT + Pile Burning - 1000 acres
<b>Total Acres – 12,502.4</b>	<b>Total Acres – 12,265</b>

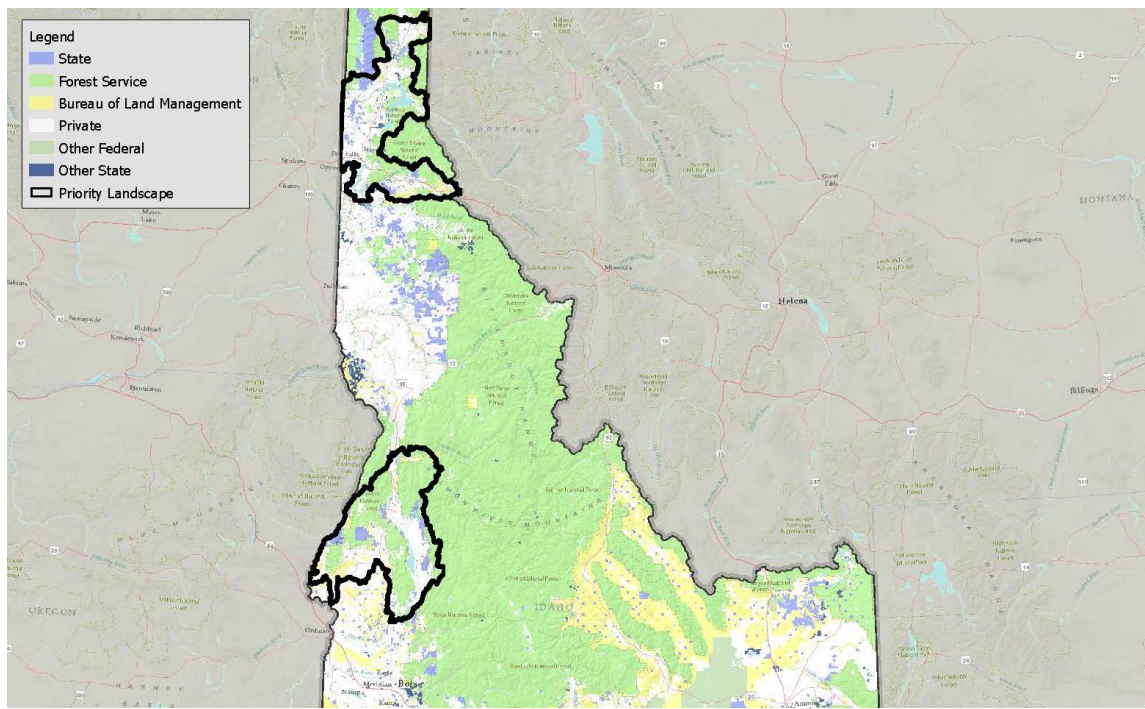


- The IDL Payette Lakes Supervisory Area treated over 4,000 acres of endowment forestland in this area.
- Almost 70 acres of private neighboring forestlands were treated in Valley County using fire-mitigation grant funds.
- In addition, about 30 acres of state (IDEQ) forestlands, adjacent to the Tamarack ski resort, have been thinned and received mechanical fuel-reduction treatments—and this treated parcel is now being used as an educational demonstration site, marketing these needed fuels treatments to over 300 adjacent private landowners in the nearby Tamarack neighborhood.
- Currently, NRCS has 6 existing EQIP contracts providing treatments on 795 acres of private forestland in this southern Priority Landscape—and there are about 570 additional acres in the 2022 NRCS EQIP application queue.



- In Adams and Idaho counties, fuels-reduction treatments are being implemented north of New Meadows on private forestlands near the Payette National Forest’s Brush Mountain project and adjacent to similar treatments on BLM forestlands.
- Over 15 acres of private forestlands in Adams County are scheduled to be treated in 2022 to serve as marketing *demonstration* sites to reach 40 other landowners in the 2500-acre Circle C development.
- A Joint Chiefs Project Proposal is currently being drafted for this *Highway 95 Corridor* cross-boundary project area for a 2023 application.
- Several cross-boundary projects are occurring—working with Valley County, Adams Soil & Water Conservation District, the local NRCS District Conservationist, IDL’s Private Forestry Specialist and GNA-SS forester (in the McCall IDL Office), Payette and Boise national forest districts, the BLM Cottonwood District, and our contracted forestry consultant (*All About Forestry*) to carry out needed fuels-reduction treatments up in the *Highway 95 Corridor* focal area—and also on the west side of Cascade Reservoir, running from targeted private lands near Tamarack, down the west side of the lake adjacent to the Boise National Forest’s French Hazard, High Forks, Willow South and Fawn Tussock projects—with several of these projects being administered by IDL’s Good Neighbor Authority foresters.

### **Shared Stewardship—Expansion of the Strategy**



- In 2019, we designated two Shared Stewardship Priority Landscapes—one in the north, one in the south—where we are focusing many of our resources.
- Currently, IDL is expanding the *strategy* of Shared Stewardship forestland management into initial discussions with all seven national forests in Idaho—to explore *opportunities* for cross-boundary fuel-reduction projects—and enhancement of treatments on the national forest with our GNA resources.