

FISCAL YEAR 2021 TIMBER SALES PLAN



IDAHO DEPARTMENT OF LANDS FY21 TIMBER SALE PLAN

July 1, 2020 – June 30, 2021

Table of Contents

Types of Sales 3
Supervisory Area Offices 4
Administrative Rules and Purchaser Sale Requirements 6
Priest Lake 7
Pend Oreille Lake 11
Mica 14
St. Joe 15
Clearwater 21
Ponderosa 24
Maggie Creek 27
Payette Lakes 29
Southwest 31
Eastern 32

IDAHO DEPARTMENT OF LANDS FY21 TIMBER SALE PLAN

July 1, 2020 – June 30, 2021

Types of Sales

Timber Sales

Timber sales contain an estimated volume of at least 1,000 MBF and exceed the net appraised stumpage value for salvage sales established by the state board of land commissioners. Timber sales are designed to produce maximum stumpage returns to the endowment funds consistent with prudent long-term management practices.

Timber sales are advertised for four weeks in a newspaper in the county where the sale is located, and are sold at public auction.

Direct Sales

Direct Sale net appraised stumpage value does not exceed the maximum value established by the State Board of Land Commissioners. This type of sale is to be used to harvest isolated or by-passed parcels of timber of insufficient value and volume to justify a salvage sale. The direct sale is not used where two or more potential purchasers may be interested in bidding on the forest products offered for sale.

The direct sale of forest product stumpage is made without advertisement as authorized by the Director.

IDAHO DEPARTMENT OF LANDS FY21 TIMBER SALE PLAN

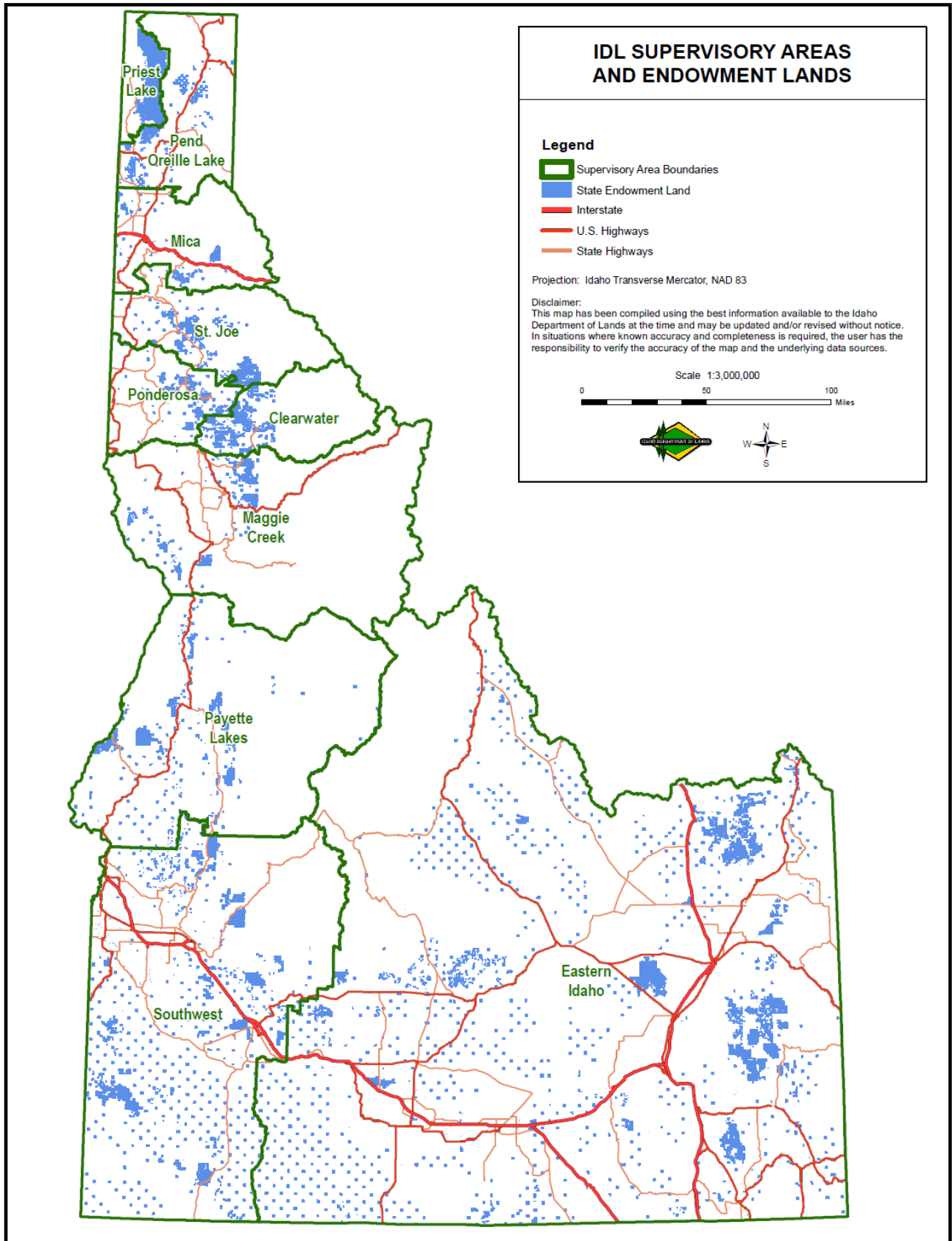
July 1, 2020 – June 30, 2021

Supervisory Area Offices

SUPERVISORY AREA	AREA SUPERVISOR	PHONE
Priest Lake 4053 Cavanaugh Bay Road Coolin, ID 83821	Dan Brown	(208) 443-2516
Pend Oreille Lake 2550 Highway 2 West Sandpoint, ID 83864	Tom Fleer	(208) 263-5104
Mica 3706 Industrial Avenue S Coeur d'Alene, ID 83815	Erik Sjoquist	(208) 769-1577
St. Joe 1806 Main Avenue St. Maries, ID 83861	Rick Arcano	(208) 245-4551
Ponderosa 3130 Highway 3 Deary, ID 83823	Chris Tretter	(208) 877-1121
Clearwater 10230 Highway 12 Orofino, ID 83544	Jay Sila	(208) 476-4587
Maggie Creek 913 Third Street Kamiah ID 83536	Dave Schwartz	(208) 935-2141
Payette Lakes 555 Deinhard Lane McCall, ID 83638	Scott Corkill	(208) 634-7125
Southwest/South Central 8355 W. State Street Boise, ID 83703	Bob Pietras	(208) 334-3488
Eastern Idaho 3563 Ririe Highway Idaho Falls, ID 83401	Pat Brown	(208) 525-7167

IDAHO DEPARTMENT OF LANDS FY21 TIMBER SALE PLAN

July 1, 2020 – June 30, 2021



IDAHO DEPARTMENT OF LANDS FY21 TIMBER SALE PLAN

July 1, 2020 – June 30, 2021

Administrative Rules and Purchaser Sale Requirements

Links to detailed information on the internet are provided below.

Administrative Rules of the Department of Lands

[20.02.14 – Selling Forest Products on State-Owned Endowment Lands](#)

For information regarding timber sale procedures, bidding procedures, bonding requirements and insurance requirements, click on the link below.

[Purchaser Sale Requirements](#)

IDAHO DEPARTMENT OF LANDS FY21 TIMBER SALE PLAN

July 1, 2020 – June 30, 2021

Priest Lake
Supervisory Area

SALE NO.	SALE NAME	SUBDIVISION	SEC	T & R	APPROXIMATE	
					ACREAGE	VOLUME
1	Trapline	Pts. NWSW, Pts. E2	7	63N/4W	150	2,800 MBF
		Pts. W2NW, Pts. N2SW	8	63N/4W		
		Pts. NE	18	63N/3W		

Estimated Auction: Summer 2020

This sale is located approximately 23.0 air miles north of Coolin, Idaho in Bonner County within the Trapper Creek drainage. The silvicultural prescriptions will be a combination of clearcut and seed tree. Ground based harvesting methods will be required for this sale. Developments will include 7.0 miles of main road opening and 1.0 mile of spur road opening. Trapper Creek and one unnamed Class I stream are adjacent but not within 75 feet of the sale area. Two Class II streams are adjacent but not within 50 feet of the sale area.

2	Caribou Conks Pulp	Pts. SWNE, Pts. E2SW, Pts. W2SE	23	63N/4W	90	1,100 MBF 2,400 Pulp
		Pts. NWNE, Pts. E2NW	26	63N/4W		
		Pts. W2NE, Pts. NESW	34	63N/4W		
		Pts. Govt. Lots 3 & 4, Pts. W2	3	62N/4W		

Estimated Auction: Summer 2020

This sale is located approximately 21.0 air miles north of Coolin, Idaho in Bonner County within the Caribou Creek drainage. The silvicultural prescriptions will include small group selection and clearcut. Ground based yarding methods will be required on this sale. Developments will include 0.7 mile of spur road reconstruction and 5.0 miles of spur road opening. Caribou Creek is a Class I stream and is adjacent but not within 75 feet of the sale area. There are two unnamed Class II streams and one large wet area within the sale area.

IDAHO DEPARTMENT OF LANDS FY21 TIMBER SALE PLAN

July 1, 2020 – June 30, 2021

Priest Lake
Supervisory Area

SALE NO.	SALE NAME	SUBDIVISION	SEC	T & R	APPROXIMATE	
					ACREAGE	VOLUME
3	Knobby Bear	Pts. Govt. Lots 6 & 7	6	61N/3W	800	3,700 MBF
		Pts. Govt. Lots 1, 2 & 3, E2SW	7	61N/3W		
		Pts. S2SW, Pts. W2SE	1	61N/4W		
		Pts. SENE, SE	10	61N/4W		
		Pts. E2SE	11	61N/4W		
		Pts. NE, N2NW, SENW	12	61N/4W		
		Pts. N2SW, Pts. SWSW, Pts. SE	12	61N/4W		
		Pts. N2NE	13	61N/4W		
		Pts. W2NE, NW, NWSE	14	61N/4W		
		Pts. NE, SENW	15	61N/4W		
		Pts. S2SW, SWSE	25	61N/4W		
		Pts. S2SE	26	61N/4W		
		Pts. NE	35	61N/4W		
		Pts. N2NE, SWNE, NW, NESW	36	61N/4W		

Estimated Auction: Spring 2020

This sale is located approximately 10.0 - 15.0 air miles northeast of Coolin, Idaho in Bonner and Boundary Counties within the Bear Creek and Two Mouth Creek drainages. The silvicultural prescriptions will be a combination of clearcut, seed tree, selective and overstory removal. Ground based and cable yarding with multi-span capabilities will be required on this sale. Developments will include 1.0 mile of spur road reconstruction, 10.0 miles of secondary road opening and 14.0 miles of spur road opening. Bear Creek and Two Mouth Creek are Class I streams and are adjacent but not within 75 feet of the sale area. Several unnamed Class II perennials and intermittent streams are within the sale area.

4	Father Roothaan	Pts. Govt. Lots 4, 5 & 6, Pts. SENW	6	60N/3W	142	3,200 MBF
		Pts. E2NE	1	60N/4W		
		Pts. S2SW	28	61N/3W		
		Pts. SESE	29	61N/3W		
		Pts. E2NE, Pts. NESE	32	61N/3W		
Pts. W2NW, Pts. NWSW	33	61N/3W				

Estimated Auction: Summer 2020

This sale is located approximately 10.0 air miles northeast of Coolin, Idaho in Bonner County within the Hunt Creek drainage. The silvicultural prescriptions will be a combination of clearcut and seed tree. Ground based and cable yarding with multi-span capabilities will be required on this sale. Developments will include 2.0 miles of new spur road construction, 1.5 miles of spur road opening and 5.0 miles of secondary road opening. Hunt Creek is a Class I stream and is adjacent but not within 75 feet of the sale area. Several unnamed Class II perennials and intermittent streams are within the sale area.

5	Rocky Point	Pts. Govt. Lots 1 - 7	22	60N/4W	175	1,500 MBF
		Pts. E2SW	22	60N/4W		

Estimated Auction: Winter 2021

This sale is located approximately 4.0 air miles north of Coolin, Idaho in Bonner County on the Rocky Point peninsula of Priest Lake. The silvicultural prescriptions will involve seed tree and shelterwood. Ground based yarding will be required on this sale. Developments will include 1.0 mile of spur road opening. Priest Lake is not within 75 feet of the sale area and no streams are within the sale area.

IDAHO DEPARTMENT OF LANDS FY21 TIMBER SALE PLAN

July 1, 2020 – June 30, 2021

Priest Lake
Supervisory Area

SALE NO.	SALE NAME	SUBDIVISION	SEC	T & R	APPROXIMATE	
					ACREAGE	VOLUME
6	Dickensheet OSR	Pts. SWSE	7	59N/4W	576	1,300 MBF
		Pts. SWNW, Pts. NWSW	17	59N/4W		
		Pts. Govt. Lots 7, 8 & 9	18	59N/4W		
		Pts. NWNE, Pts. SENE, Pts. NENW	18	59N/4W		
		Pts. E2NE, Pts. SWNE	20	59N/4W		
		Pts. NESW, Pts. S2SW, Pts. SE	20	59N/4W		
		Pts. Govt. Lot 1, Pts. NW, Pts. NESW	29	59N/4W		
		Pts. Govt. Lots 5 & 9	30	59N/4W		
		Pts. SWSE	33	59N/4W		
		Pts. Govt. Lots 1, 2, 3, 4, 6 & 7	4	58N/4W		
		Pts. E2SW, Pts. N2SE, Pts. SWSE	4	58N/4W		
		Pts. Govt. Lots 1, 3 & 5, Pts. NENW	9	58N/4W		
		Pts. NENW	9	58N/4W		
		Pts. S2NW, Pts. N2SW	14	58N/4W		

Estimated Auction: Summer 2020

This sale is located approximately 4.0 – 7.0 air miles south of Coolin, Idaho in Bonner County within the Priest River and North Fork East River drainages. The silvicultural prescription for the entire sale will include overstory removal methods. Ground based and cable yarding methods will be required. Developments will include 6.0 miles of spur road opening. There are a few unnamed Class II streams within or adjacent to the sale area.

7	Atlasta Jungle	Pts. Govt. Lot 4, Pts. SWNW	4	58N/3W	370	4,100 MBF
		Pts. W2SW	4	58N/3W		
		Pts. Govt. Lots 1 & 2, Pts. SENE	5	58N/3W		
		Pts. W2SW, Pts. SE	5	58N/3W		
		Pts. Govt. Lot 7, Pts. SESW	6	58N/3W		
		Pts. SE	6	58N/3W		
		Pts. Govt. Lots 1 & 2, Pts. N2NE	7	58N/3W		
		Pts. E2NW	7	58N/3W		
		Pts. E2NE, Pts. NWNE	8	58N/3W		
		Pts. W2NW	9	58N/3W		

Estimated Auction: Summer 2020

This sale is located approximately 7.0 air miles southeast of Coolin, Idaho in Bonner County within the Middle Fork East River drainage. The silvicultural prescriptions will be a combination of clearcut and overstory removal methods. Ground based and cable yarding will be required on this sale. Developments will include 0.1 mile of new spur road construction, 9.1 miles of spur road reconstruction and 2.4 miles of secondary road opening. Middle Fork East River is a Class I stream and is not within 1,000 feet of the sale area. Several unnamed Class II perennials and intermittent streams are within the sale area.

IDAHO DEPARTMENT OF LANDS FY21 TIMBER SALE PLAN

July 1, 2020 – June 30, 2021

Priest Lake
Supervisory Area

SALE NO.	SALE NAME	SUBDIVISION	SEC	T & R	APPROXIMATE ACREAGE	VOLUME
8	Junta Sawlog	Pts. SWNE, Pts. E2NW	28	59N/3W	191	2,900 MBF
		Pts. SWNW, Pts. SW, Pts. NWSE	28	59N/3W		
		Pts. NW	29	59N/3W		
		Pts. SESW, Pts. SWSE	30	59N/3W		
		Pts. NWNE, Pts. SESW	31	59N/3W		
		Pts. N2NW	33	59N/3W		

Estimated Auction: Summer 2020

This sale is located approximately 6.0 air miles south of Coolin, Idaho in Bonner County within the North Fork East River and Junta Creek drainages. The silvicultural prescriptions will be a combination of clearcut, seed tree and overstory removal methods. Ground based and cable yarding methods will be required for this sale. Developments will include 5.0 miles of spur road reconstruction. The North Fork East River and Junta Creek are both Class I streams and are adjacent but not within 75 feet of the sale area.

Additional small volume sales:	80	400 MBF
TOTALS:	2,574	21,000 MBF 2,400 Pulp

IDAHO DEPARTMENT OF LANDS FY21 TIMBER SALE PLAN

July 1, 2020 – June 30, 2021

Pend Oreille Lake
Supervisory Area

SALE NO.	SALE NAME	SUBDIVISION	SEC	T & R	APPROXIMATE	
					ACREAGE	VOLUME
1	Hello Elk	Pts. W2SW	25	62N/1W	200	3,000 MBF
		Pts. S2NE, Pts. NW	36	62N/1W		
		Pts. E2SW, Pts. SE	36	62N/1W		

Estimated Auction: Summer 2020

The sale area is located approximately 4.0 air miles west of Bonners Ferry, Idaho in the Deep Creek drainage. This sale will utilize seed tree and overstory removal silvicultural prescriptions. Ground based and cable yarding methods will be required. Developments will include 2.5 miles of spur road opening and 1.8 miles of spur road reconstruction. Class II streams are present.

2	Downfall OSR	Pts. NWSW, W2SWSW	5	60N/1W	510	3,500 MBF
		Pts. Govt. Lots 6 & 7	6	60N/1W		
		Pts. S2NE, Pts. SENW	6	60N/1W		
		Pts. E2SW, Pts. NESE	6	60N/1W		
		W2SE, SESE	6	60N/1W		
		Pts. SWNE, Pts. SENW	7	60N/1W		
		Pts. NESW, Pts. NWSE	7	60N/1W		
		Pts. N2	8	60N/1W		

Estimated Auction: Summer 2020

The sale area is located approximately 5.0 air miles west of Naples, Idaho in the Fall Creek drainage. This sale will utilize overstory removal, clearcut, and seed tree silvicultural prescriptions. Ground based and cable yarding methods will be required. Developments will include 3.4 miles of spur road opening, 0.2 mile of spur road reconstruction, and new construction of 4.1 miles of spur road. Class I and Class II streams are present.

3	Big Bear	Pts. Govt. Lot 11	6	57N/3W	160	4,060 MBF
		Pts. Govt. Lot 1	7	57N/3W		
		Pts. SWSE	1	57N/4W		
		Pts. NESE	11	57N/4W		
		Pts. NE, Pts. E2NW, Pts. SWNW	12	57N/4W		
		Pts. N2SW, Pts. NWSE	12	57N/4W		

Estimated Auction: Summer 2020

The sale area is located approximately 9.0 air miles west of Sandpoint, Idaho in the Big and Blue Creek drainages. This sale will utilize seed tree and clearcut silvicultural prescriptions. Ground based and cable yarding methods will be required. Developments will include 3.0 miles of spur road reconstruction. Class I and Class II streams are present.

4	Upper Curtis	Pts. S2NE, Pts. N2NW	26	55N/5W	100	1,600 MBF
		Pts. SENW, Pts. NWSE	26	55N/5W		

Estimated Auction: Fall 2020

The sale area is located approximately 5.5 air miles northeast of Blanchard, Idaho in the McDonald and Curtis Creek drainages. This sale will utilize a clearcut silvicultural prescription. Ground based and cable yarding methods will be required. Developments will include 2.3 miles of spur road reconstruction and new construction of 0.5 mile of spur road. Class II streams are present.

IDAHO DEPARTMENT OF LANDS FY21 TIMBER SALE PLAN

July 1, 2020 – June 30, 2021

Pend Oreille Lake
Supervisory Area

SALE NO.	SALE NAME	SUBDIVISION	SEC	T & R	APPROXIMATE ACREAGE	VOLUME
5	Springboard	Pts. NE, Pts. N2NW, Pts. SENW	22	58N/1E	120	1,050 MBF

Estimated Auction: Fall 2020

The sale area is located approximately 10.0 air miles northeast of Ponderay, Idaho in the Spring Creek drainage. This sale will utilize an overstory removal silvicultural prescription. Ground based yarding methods will be required. Developments will include 5.0 miles of spur road opening and 2.0 miles of spur road reconstruction. Class I and Class II streams are present.

6	View Finder	Pts. NWSW	3	57N/4W	240	3,080 MBF
		Pts. NE, Pts. W2NW, Pts. N2SE	9	57N/4W		
		Pts. SWNW, Pts. N2SW	10	57N/4W		

Estimated Auction: Winter 2021

The sale area is located approximately 8.0 miles northeast of Priest River, Idaho in the Prater and Ranger Creek drainages. This sale will utilize overstory removal, clearcut, and seedtree silviculture prescriptions. Ground based and cable yarding methods will be required. Developments will include 2.6 miles of spur road opening and 3.7 miles of secondary road reconstruction. Class I and class II streams are present.

7	Fragile	Pts. E2SW, Pts. SE	10	60N/1E	285	5,750 MBF
		Pts. NWNE, Pts. S2NE	16	60N/1E		
		Pts. NWNW, Pts. S2NW	16	60N/1E		
		Pts. SW, Pts. SE	16	60N/1E		
		Pts. SENE, Pts. NESE	17	60N/1E		

Estimated Auction: Winter 2021

The sale area is located approximately 2.5 air miles southeast of Naples, Idaho in the Trail Creek drainage. This sale will utilize seed tree, clearcut, and overstory removal silvicultural prescriptions. Ground based and cable yarding methods will be required. Developments will include 7.1 miles of spur road opening and 0.3 mile of spur road reconstruction. Class I and Class II streams are present.

IDAHO DEPARTMENT OF LANDS FY21 TIMBER SALE PLAN

July 1, 2020 – June 30, 2021

Pend Oreille Lake
Supervisory Area

SALE NO.	SALE NAME	SUBDIVISION	SEC	T & R	APPROXIMATE	
					ACREAGE	VOLUME
8	Last Stitch OSR	Pts. SW	16	54N/4W	1,310	6,860 MBF
		N2NE, Pts. S2NE, N2NW	20	54N/4W		
		Pts. S2NW, Pts. SW, Pts. N2SE	20	54N/4W		
		Pts. SWNE, Pts. NW, Pts. S2	22	54N/4W		
		Pts. S2NE, Pts. N2NW	28	54N/4W		
		Pts. SWNW, SENW, SW	28	54N/4W		
		W2SE, Pts. W2SE	28	54N/4W		
		Pts. SWNE, Pts. E2NW, W2NW	34	54N/4W		
		Pts. NESW, Pts. W2SW	34	54N/4W		

Estimated Auction: Winter 2021

The sale area is located approximately 3.0 air miles north of Spirit Lake, Idaho in the Spirit and Hoodoo Creek drainages. This sale will utilize an overstory removal silvicultural prescription. Ground based and cable yarding methods will be required. Developments will include 15.0 miles of spur road opening and rock pit development. There are no streams within the sale area.

Additional small volume sales:

20 100 MBF

TOTALS: 2,945 29,000 MBF

IDAHO DEPARTMENT OF LANDS FY21 TIMBER SALE PLAN

July 1, 2020 – June 30, 2021

Mica
Supervisory Area

SALE NO.	SALE NAME	SUBDIVISION	SEC	T & R	APPROXIMATE	
					ACREAGE	VOLUME
1	Bear Creek OSR	Pts. SWNW, Pts. SW, Pts. S2SE	10	49N/2E	390	4,500 MBF
		Pts. W2NE, Pts. NW, Pts. SW	13	49N/2E		
		Pts. SENE, Pts. SESE	14	49N/2E		
		Pts. NE, Pts. SW, Pts. NESE	23	49N/2E		
		Pts. SENE, Pts. W2NW, Pts. SE	24	49N/2E		

Estimated Auction: Fall 2020

This sale is located approximately 4.0 air miles northeast of Pinehurst, Idaho in the Bear Creek drainage. The silvicultural prescriptions consists of overstory removal and clearcut. Both ground and cable based yarding will be utilized. Developments include 1.6 miles of new secondary road construction and approximately 20.0 miles of secondary road opening. Class I and Class II streams are present.

2	North Initial	Pts. Govt. Lots 6 & 7	17	48N/1W	480	5,900 MBF
		Pts. Govt. Lots 3-8, Pts. SWNE	18	48N/1W		
		Pts. SESW, Pts. SWSE	18	48N/1W		
		Pts. NWNE, Pts. E2NE	19	48N/1W		
		Pts. Govt. Lot 1, Pts. NENW	19	48N/1W		
		Pts. SESW, Pts. S2SE	13	48N/2W		
		Pts. N2NE, Pts. E2NW	24	48N/2W		

Estimated Auction: Spring 2021

This sale is located approximately 2.5 air miles southwest of Rose Lake, Idaho in the Blackrock Gulch and Coeur d'Alene river drainage. The silvicultural prescriptions consists of overstory removal, shelterwood and three clearcut units. Both ground and cable based yarding will be utilized. Developments include 2.0 miles of new spur road construction, 2.25 miles of spur road reconstruction, 2.5 miles of mainhaul road opening, 8.0 miles of secondary road opening and 1.5 miles of spur road opening. Class II streams are present.

3	Something Fishy	Pts. Govt. Lots 3-5	4	52N/5W	491	7,400 MBF
		Pts. NESW, Pts. NESE	5	52N/5W		
		NWSE, Pts. SWSE	5	52N/5W		
		Pts. NWNE	8	52N/5W		
		Pts. S2NE	36	53N/6W		
		Pts. NENW, Pts. Govt. Lots 1-3	36	53N/6W		
		Pts. SENW Pts. NESW	36	53N/6W		
		Govt. Lot 4, SESW, NESE	36	53N/6W		
		Pts. NWSE, SWSE, Pts. SESE	36	53N/6W		

Estimated Auction: Spring 2021

This sale is located approximately 7.0 air miles east of Coeur d'Alene, Idaho in the Wolf Lodge Creek drainage. The silvicultural prescriptions consist of overstory removal and clearcut harvests. Both ground and cable based yarding will be utilized. Developments include approximately 0.62 mile of new spur road construction and approximately 5.0 miles of spur road opening. There is a Class I stream adjacent to the sale area and several Class II streams within the sale area.

Additional small volume sales:	100	200 MBF
	<hr/>	
TOTALS:	1,461	18,000 MBF

IDAHO DEPARTMENT OF LANDS FY21 TIMBER SALE PLAN

July 1, 2020 – June 30, 2021

St. Joe
Supervisory Area

SALE NO.	SALE NAME	SUBDIVISION	SEC	T & R	APPROXIMATE	
					ACREAGE	VOLUME
1	Some Help OSR	Pts. S2NE, Pts. NW	23	45N/2W	386	4,800 MBF
		Pts. SW, Pts. SE	23	45N/2W		
		Pts. SW, Pts. E2SE	24	45N/2W		

Estimated Auction: Summer 2020

This sale is located approximately 5.5 air miles south of St. Maries, Idaho in the Flat Creek drainage. Overstory removal, seed tree, and clearcut silvicultural prescriptions are planned. Cable yarding and ground based skidding will be required. Developments include approximately 1.18 miles of secondary road new construction and 6.21 miles of secondary road opening. Class I and Class II streams are present within the sale area.

2	Willow OSR	Pts. SESE	10	43N/3W	132	2,000 MBF
		Pts. E2NW	11	43N/3W		
		Pts. NESW	11	43N/3W		
		Pts. SWSW	11	43N/3W		
		Pts. N2NW	12	43N/3W		
		Pts. SWSW	13	43N/3W		
		Pts. NWNW	14	43N/3W		
		Pts. S2SE	14	43N/3W		
		Pts. NENE	15	43N/3W		

Estimated Auction: Fall 2020

This sale is located approximately 5.0 air miles southwest of Emida, Idaho in the Willow Creek and South Fork of Santa Creek drainages. Overstory removal and seed tree silvicultural prescriptions are planned. Ground based skidding and cable yarding will be required. Developments include approximately 2.0 miles of secondary road opening. Class II streams are present within the sale area.

3	Lookout Above	Pts. N2NE	5	44N/1E	149	4,000 MBF
		Pts. SWNE	5	44N/1E		
		Pts. NW	5	44N/1E		
		Pts. N2SW	5	44N/1E		
		Pts. NWSE	5	44N/1E		

Estimated Auction: Fall 2020

This sale is located approximately 5.0 air miles northeast of Santa, Idaho in the Renfro Creek drainage. Clearcut and seed tree silvicultural prescriptions are planned. Ground based skidding and cable yarding will be required. Developments include approximately 8.5 miles of secondary road opening. Class II streams are present within the sale area.

IDAHO DEPARTMENT OF LANDS FY21 TIMBER SALE PLAN

July 1, 2020 – June 30, 2021

St. Joe
Supervisory Area

SALE NO.	SALE NAME	SUBDIVISION	SEC	T & R	APPROXIMATE	
					ACREAGE	VOLUME
4	Chop Cedar (Single Entry)	Pts. SESW	19	41N/4E	292	6,000 MBF
		Pts. S2SE	19	41N/4E		10,000 Poles
		Pts. W2SW	20	41N/4E		
		Pts. SESW	20	41N/4E		
		Pts. W2NW	29	41N/4E		
		Pts. Govt. Lots 1-3	30	41N/4E		
		Pts. NE, Pts. E2NW	30	41N/4E		
		Pts. NESW	30	41N/4E		

Estimated Auction: Summer 2020

This sale is located approximately 10.0 air miles northeast of Elk River, Idaho in the Breakfast Creek drainage. Shelterwood silvicultural prescription is planned. Helicopter and cable yarding will be required. Developments include approximately 0.76 mile of spur road new construction, approximately 0.5 mile of spur road reconstruction and 8.6 miles of secondary road will be opened. Class I and Class II streams are present within the sale area.

5	Smith Shacktor	Pts. Govt. Lots 2 & 3	31	41N/5E	140	4,600 MBF
		Pts. NENW	31	41N/5E		
		Pts. SENW	31	41N/5E		
		Pts. NENE	36	41N/4E		
		Pts. W2NE	36	41N/4E		
		Pts. SENE	36	41N/4E		
		Pts. NESE	36	41N/4E		
		Pts. NWSE	36	41N/4E		

Estimated Auction: Spring 2021

This sale is located approximately 32.0 air miles southeast of Clarkia, Idaho in the North Fork of the Clearwater River drainage. Clearcut and shelterwood silvicultural prescriptions are planned. Ground based skidding and cable yarding will be required. Developments include approximately 1.35 miles of secondary road new construction and approximately 2.0 miles of secondary road reconstruction. Class II streams are present within the sale area.

IDAHO DEPARTMENT OF LANDS FY21 TIMBER SALE PLAN

July 1, 2020 – June 30, 2021

St. Joe
Supervisory Area

SALE NO.	SALE NAME	SUBDIVISION	SEC	T & R	APPROXIMATE	
					ACREAGE	VOLUME
6	Pocono Poke	Pts. SW	27	45N/3E	218	8,400 MBF
		Pts. SE	28	45N/3E		

Estimated Auction: Summer 2020

This sale is located approximately 6.5 air miles southeast of Calder, Idaho in the Marble Creek drainage. Shelterwood and clearcut silvicultural prescriptions are planned. The clearcut (110 acres) prescription was chosen because of rapidly declining merchantability due to widespread insect and disease infestations. Cable yarding and ground based skidding will be required. Developments include approximately 0.95 mile of secondary road new construction and 3.15 miles of secondary road opening. Class II streams are present within the sale area.

7	Lights Out	Pts. NW, Pts. N2SW	13	42N/4E	194	7,300 MBF
		Pts. SE	13	42N/4E		
		Pts. W2SW, Pts. SE	19	42N/5E		
		Pts. SWSW	20	42N/5E		
		Pts. NWNE	30	42N/5E		
		Pts. NENW	30	42N/5E		

Estimated Auction: Spring 2021

This sale is located approximately 40.0 air miles southeast of Clarkia, Idaho in the Floodwood Creek and Cedar Creek drainages. Clearcut, overstory removal, and shelterwood silvicultural prescriptions are planned. Cable yarding and ground based skidding will be required. Developments include approximately 0.2 mile of secondary road new construction, approximately 3.0 miles of secondary road reconstruction and 5.2 miles of secondary road opening. Class I and Class II streams are present within the sale areas.

8	Renfro Conversion	Pts. SESW	8	44N/1E	96	3,000 MBF
		Pts. SE	8	44N/1E		
		Pts. SW	9	44N/1E		
		Pts. SWNE	17	44N/1E		

Estimated Auction: Fall 2020

This sale is located approximately 4.0 air miles northeast of Santa, Idaho in the Renfro Creek drainage. Clearcut silvicultural prescription is planned. Cable yarding will be required. Developments include approximately 3.0 miles of secondary road opening. Class I and II streams are present within the sale area.

IDAHO DEPARTMENT OF LANDS FY21 TIMBER SALE PLAN

July 1, 2020 – June 30, 2021

St. Joe
Supervisory Area

SALE NO.	SALE NAME	SUBDIVISION	SEC	T & R	APPROXIMATE	
					ACREAGE	VOLUME
9	Upper Crystal	Pts. SESE	10	44N/1E	308	7,200 MBF
		Pts. W2W2	11	44N/1E		
		Pts. E2NE	15	44N/1E		
		Pts. SWNE	15	44N/1E		
		Pts. NWSE	15	44N/1E		
		Pts. N2, Pts. SW	16	44N/1E		
		Pts. NWSE	16	44N/1E		

Estimated Auction: Summer 2020

This sale is located approximately 5.0 air miles northeast of Santa, Idaho in the Crystal Creek drainage. Shelterwood and overstory removal silvicultural prescriptions are planned. Both ground based skidding and cable yarding will be required. Developments include approximately 1.72 miles of secondary road new construction, approximately 0.8 mile of secondary road reconstruction and 19.9 miles of secondary road opening. Class I and II streams are present within the sale area.

10	Jump Start	Pts. SESW	14	43N/1W	136	4,200 MBF
		Pts. NESE	14	43N/1W		
		Pts. SWSE, SESE	14	43N/1W		
		Pts. SWNE	14	43N/1W		
		Pts. SENE	15	43N/1W		
		Pts. NWSE	15	43N/1W		
		Pts. NESE	15	43N/1W		

Estimated Auction: Spring 2021

This sale is located approximately 3.0 air miles southwest of Fernwood, Idaho in the Little Carpenter Creek drainage. A clearcut silvicultural prescription is planned. Ground based skidding and cable yarding will be required. Developments include approximately 5.0 miles of secondary road opening. Class I and Class II streams are present within the sale area.

IDAHO DEPARTMENT OF LANDS FY21 TIMBER SALE PLAN

July 1, 2020 – June 30, 2021

St. Joe
Supervisory Area

SALE NO.	SALE NAME	SUBDIVISION	SEC	T & R	APPROXIMATE	
					ACREAGE	VOLUME
11	Up and Away	Pts. SESE	4	43N/1W	377	9,800 MBF
		Pts. W2NE	5	43N/1W		
		Pts. N2SW	5	43N/1W		
		Pts. SWSW	5	43N/1W		
		Pts. NWSE	5	43N/1W		
		Pts. NE	9	43N/1W		
		Pts. NWNE	10	43N/1W		
		Pts. N2NW	10	43N/1W		
		Pts. SWNW	10	43N/1W		
		Pts. NESW	14	43N/1W		
		Pts. S2SW	14	43N/1W		
		Pts. N2SE	14	43N/1W		
		Pts. SESE	15	43N/1W		
		Pts. S2NW	16	43N/1W		
		Pts. N2SW	16	43N/1W		
		Pts. SWSW	16	43N/1W		
		Pts. S2NE	17	43N/1W		
		Pts. W2NW	21	43N/1W		
		Pts. SWSW	25	43N/1W		
		Pts. S2SE	26	43N/1W		
		Pts. E2NE	27	43N/1W		
		Pts. SWNE	27	43N/1W		
		Pts. SENW	27	43N/1W		
		Pts. NESW	27	43N/1W		
		Pts. S2SW	27	43N/1W		
		Pts. N2SE	27	43N/1W		
		Pts. SWSE	27	43N/1W		
		Pts. W2SE	28	43N/1W		
		Pts. SWNE	26	44N/1W		
		Pts. SWNW	26	44N/1W		

Estimated Auction: Spring 2021

This sale is located approximately 4.0 air miles south of Santa, Idaho in the Heinaman, Carpenter, Little Carpenter, North Fork Tyson, Tyson and West Fork Emerald Creek drainages and the St. Maries River drainage. Shelterwood and clearcut silvicultural prescriptions are planned. Ground based skidding and cable yarding will be required. Developments include approximately 2.0 miles of secondary road new construction, approximately 1.0 mile of secondary road reconstruction, and 5.0 miles of secondary road opening. Class II streams are present within the sale area.

IDAHO DEPARTMENT OF LANDS FY21 TIMBER SALE PLAN

July 1, 2020 – June 30, 2021

St. Joe
Supervisory Area

SALE NO.	SALE NAME	SUBDIVISION	SEC	T & R	APPROXIMATE	
					ACREAGE	VOLUME
12	Pokey Teepee	Pts. S2SE	36	45N/1W	523	8,300 MBF
		Pts. Govt. Lots 1 & 2	1	44N/1W		
		Pts. S2NE	1	44N/1W		
		Pts. SESW, Pts. SE	1	44N/1W		
		Pts. N2SW	2	44N/1W		
		Pts. SWSW	2	44N/1W		
		Pts. NWNE	12	44N/1W		
		Pts. NENW	12	44N/1W		
		Pts. Govt. Lots 2 - 4	4	44N/1E		
		Pts. S2NW	4	44N/1E		
		Pts. N2SW	4	44N/1E		
		Pts. Govt. Lots 3 - 7	6	44N/1E		
		Pts. SENW	6	44N/1E		
		Pts. E2	7	44N/1E		
		Pts. NWNE	18	44N/1E		

Estimated Auction: Summer 2020

This sale is located approximately 3.0 air miles northeast of Santa, Idaho in the Pokey Creek and Davis Creek drainages. Shelterwood, seed tree, and clearcut silvicultural prescriptions are planned. Ground based skidding and cable yarding will be required. Developments include approximately 3.0 miles of secondary road opening. Class I and II streams are present within the sale area.

Additional small volume sales:

100 400 MBF

TOTALS: 3,051 70,000 MBF
10,000 Poles

IDAHO DEPARTMENT OF LANDS FY21 TIMBER SALE PLAN

July 1, 2020 – June 30, 2021

Clearwater Supervisory Area

SALE NO.	SALE NAME	SUBDIVISION	SEC	T & R	APPROXIMATE	
					ACREAGE	VOLUME
1	Big Face	Pts. Govt. Lots 3 & 4	3	38N/4E	279	11,340 MBF
		Pts. S2NW, Pts. N2SW	3	38N/4E		
		Pts. SWSW	3	38N/4E		
		Pts. Govt. Lots 1 & 2	4	38N/4E		
		Pts. SENE, Pts. SE	4	38N/4E		
		Pts. NENE	9	38N/4E		
		Pts. NWNW	10	38N/4E		
		Pts. S2SW	34	39N/4E		

Estimated Auction: Fall 2020

This sale is located approximately 7.0 air miles northwest of Headquarters, Idaho in both the North and South Forks of the Big Creek drainage. A combination of seed tree and clearcut silvicultural prescriptions will be utilized. Both tractor and cable yarding systems will be required. Development work includes approximately 3.23 miles of new spur road construction and 1.97 miles of existing spur road reconstruction. Several Class I streams, including the North and South Forks of Big Creek and an unnamed tributary, as well as several more Class II streams all flow through this proposed sale area.

2	West Shanghai Cedar (Dual Entry)	NWNE	7	37N/6E	82	4,005 MBF 2,600 Poles
		Pts. E2SE	12	37N/5E		

Estimated Auction: Fall 2020

This sale is located approximately 5.0 air miles northeast of Pierce, Idaho in the Little Beaver Creek drainage. A seed tree silvicultural prescription will be utilized. Both tractor and cable yarding systems will be required. Development work includes approximately 0.49 mile of new spur road construction and 1.5 miles of spur road reconstruction. Several Class II streams flow through this proposed sale area.

3	Trapper Shelter	Pts. SWNW	15	38N/6E	245	8,225 MBF
		Pts. S2NE, SWSW, E2SW, SE	16	38N/6E		

Estimated Auction: Spring 2021

This sale is located 5.0 air miles east of Headquarters, Idaho in the Washington Creek drainage. The silvicultural prescription for the sale area is a shelterwood harvest. Tractor and cable yarding will be required on this sale. Development work includes approximately 3.5 miles of new spur road construction. Several Class I streams, Class II streams, and draws are within the sale boundary.

IDAHO DEPARTMENT OF LANDS FY21 TIMBER SALE PLAN

July 1, 2020 – June 30, 2021

Clearwater
Supervisory Area

SALE NO.	SALE NAME	SUBDIVISION	SEC	T & R	APPROXIMATE	
					ACREAGE	VOLUME
4	True North Cedar (Dual Entry)	Pts. SESE	8	40N/5E	130	5,730 MBF
		Pts. NESW, Pts. S2SW	9	40N/5E		3,520 Poles
		Pts. W2SE	9	40N/5E		
		Pts. NWNE, Pts. N2NW	16	40N/5E		
		Pts. NENE	17	40N/5E		

Estimated Auction: Summer 2020

This sale is located approximately 13.0 air miles north of Headquarters, Idaho in the North Fork of Benton Creek drainage. This sale will be harvested using a seed tree silvicultural prescription. Both tractor and cable yarding systems will be required. Development work includes approximately 0.95 mile of new spur road construction, 7.89 miles of secondary road opening, and 1.40 miles of spur road opening. Several Class II streams flow through and are adjacent to this proposed sale area.

5	Casey OSR	Pts. Govt. Lot 2	6	38N/5E	315	1,700 MBF
		Pts. SWNE, Pts. Govt. Lot 2	31	39N/5E		
		Pts. SENW, Pts. Govt. Lots 3-4	31	39N/5E		
		Pts. E2SW, Pts. SE	31	39N/5E		
		Pts. E2SE	36	38N/4E		

Estimated Auction: Spring 2021

This sale is located 3.0 air miles northwest of Headquarters, Idaho in the Casey Creek drainage. The silvicultural prescription for the sale area is overstory removal harvest. Tractor and cable yarding will be required on this sale. Development work includes approximately 9.65 miles of spur road opening. Several Class II streams and draws are within the sale boundary.

6	Faerbers Cedar (Single Entry)	W2NE	22	36N/3E	68	555 MBF 600 Poles
		NESW	22	36N/3E		

Estimated Auction: Spring 2020

This sale is located 13.0 air miles southeast of Orofino, Idaho in the Cook Creek drainage. The silvicultural prescription for the sale includes two units of overstory removal. One overstory removal unit is a failed seed tree of approximately 37 acres. Tractor yarding will be required on this sale. Development work includes approximately 0.97 mile of spur road opening. Class II streams and draws are located within the sale boundary.

7	Porters I	E2SESW	36	37N/4E	156	4,445 MBF
		NWNESE, S2NESE	36	37N/4E		
		NENWSE, S2NWSE	36	37N/4E		
		S2SE	36	37N/4E		

Estimated Auction: Spring 2021

This sale is located 4.0 air miles northwest of Pierce, Idaho in the Orofino Creek drainage. The silvicultural prescription for the sale area includes two units of seed tree harvests. Tractor and cable yarding will be required on this sale. Development work includes approximately 0.79 mile of spur road reconstruction and approximately 1.17 miles of spur road new construction. Several Class II streams and draws are within the sale boundary.

IDAHO DEPARTMENT OF LANDS FY21 TIMBER SALE PLAN

July 1, 2020 – June 30, 2021

Clearwater
Supervisory Area

SALE NO.	SALE NAME	SUBDIVISION	SEC	T & R	APPROXIMATE	
					ACREAGE	VOLUME
8	Ceady OSR	Pts. Govt. Lots 1-4, Pts. SWNE	2	38N/2E	449	4,150 MBF
		Pts. S2NW	2	38N/2E		
		Govt. Lots 1-3, Pts. S2NE	3	38N/2E		
		Pts. Govt. Lot 4, Pts. S2NW	3	38N/2E		
		Pts. N2S2	3	38N/2E		

Estimated Auction: Spring 2021

This sale is located 3.0 air miles north of Dent, Idaho in the Cedar Creek drainage. The silvicultural prescription for the sale area is an overstory removal. Both tractor and cable yarding methods will be required on this sale. Development work includes approximately 6.8 miles of spur road opening. Class I and II streams and draws and are within the sale boundary.

9	Hodson Point OSR	Pts. NWSE	24	38N/3E	290	1,375 MBF
		Pts. NWNE, Pts. SESW	26	38N/3E		
		Pts. SWSE	27	38N/3E		
		Pts. NE, Pts. E2NW	34	38N/3E		

Estimated Auction: Summer 2020

This sale is located approximately 18.0 air miles northeast of Orofino, Idaho in the West Fork of Hodson Creek drainage. The silvicultural prescription for the entire sale area is an overstory removal. Tractor and cable yarding methods will be required on this sale. Development work includes 3.22 miles of existing spur road opening. Several Class II streams and several unnamed tributaries are within the sale area, all of which drain into Dworshak Reservoir.

10	Baldy Bear Cedar (Dual Entry)	Pts. NESE, S2SE	9	38N/2E	279	7,570 MBF 2,290 Poles
		Pts. SW, Pts. SWSE	10	38N/2E		
		Pts. W2NE, N2NW, SENW	15	38N/2E		
		Pts. NENE	16	38N/2E		

Estimated Auction: Fall 2020

This sale is located 2.0 air miles north of Dent, Idaho in the Camp Y drainage. The silvicultural prescription for the sale area is a seed tree harvest. Tractor yarding will be required on this sale. Development work includes approximately 2.0 miles of spur road new construction, 1.0 mile of spur road reconstruction and 2.0 miles of spur road opening. Several Class II streams and draws are within the sale boundary.

Additional small volume sales: 400 905 MBF

TOTALS: 2,693 50,000 MBF
9,010 Poles

IDAHO DEPARTMENT OF LANDS FY21 TIMBER SALE PLAN

July 1, 2020 – June 30, 2021

Ponderosa Supervisory Area

SALE NO.	SALE NAME	SUBDIVISION	SEC	T & R	APPROXIMATE ACREAGE	APPROXIMATE VOLUME
1	3 Bear Cedar (Dual Entry)	Pts. W2NE, Pts. NW, Pts. SW	17	39N/1E	203	8,975 MBF
		Pts. NESE	18	39N/1E		5,500 Poles

Estimated Auction: Summer 2020

This sale is located approximately 7.0 air miles southeast of Helmer, Idaho in the Long Meadow Creek and Chambers Creek drainages. This sale will be harvested utilizing a seed tree silvicultural prescription. Ground based and cable yarding methods are required for this sale. Developments include approximately 4.37 miles of spur road new construction, 2.60 miles of spur road reconstruction, and 1.47 miles of spur road opening. There are several Class II streams within and adjacent to the sale area, all of which are tributaries to Dworshak Reservoir.

2	Middle Man	Pts. NE	21	41N/1W	415	3,500 MBF
		Pts. NW	22	41N/1W		
		Pts. NWSW	25	41N/1W		
		Pts. S2NE, Pts. S2NW, Pts. N2SW	26	41N/1W		
		Pts. N2SE, Pts. SWSW	26	41N/1W		
		Pts. Govt. Lot 8	34	41N/1W		
		Pts. S2NE, Pts. SW, Pts. N2SE	35	41N/1W		
		Pts. SESE	35	41N/1W		
	Pts. W2SW	36	41N/1W			

Estimated Auction: Summer 2020

This sale is located approximately 2.0 air miles west of Bovill, Idaho in the Moose Creek drainage. This sale will be harvested utilizing overstory removal and clearcut silvicultural prescriptions. Ground based and cable yarding methods will be required for this sale. Developments include approximately 0.62 mile of new spur road construction, 2.83 miles of spur road opening and 1.74 miles of spur road reconstruction. The sale is adjacent to Class I streams and there are several intermittent Class II streams within the sale area, all of which are tributaries to Moose Creek and the Moose Creek Reservoir.

3	Cloverfield	NWSW	1	39N/1E	355	8,125 MBF
		Govt. Lot 1	2	39N/1E		
		Pts. Govt. Lot 2, Pts. S2NW, Pts. SW	4	39N/2E		
		Pts. Govt. Lot 1, SENE, Pts. E2SE	5	39N/2E		
		NWNE, SENE	7	40N/2E		

Estimated Auction: Summer 2020

This sale is located approximately 4.0 air miles northwest and 6.0 air miles southwest of Elk River, Idaho in the Seastem Creek, Cameron Creek, Cloverleaf Creek, and Butterfield Creek drainages. This sale will be harvested utilizing seed tree, overstory removal, and clearcut silvicultural prescriptions. Ground based and cable yarding methods are required for this sale. Developments include approximately 2.0 miles of spur road new construction, 0.5 mile of spur road reconstruction, and 8.0 miles of spur road opening. The sale has several Class II streams within and adjacent to the sale area, all of which are tributaries to Dworshak Reservoir.

IDAHO DEPARTMENT OF LANDS FY21 TIMBER SALE PLAN

July 1, 2020 – June 30, 2021

Ponderosa Supervisory Area

SALE NO.	SALE NAME	SUBDIVISION	SEC	T & R	APPROXIMATE	
					ACREAGE	VOLUME
4	Brush OSR	Pts. S2SW, Pts. SWSE	2	40N/2W	534	5,635 MBF
		Pts. SENE	10	40N/2W		
		Pts. Govt. Lot 1, Pts. N2NE	11	40N/2W		
		Pts. SENE, Pts. NW, Pts. NESW	11	40N/2W		
		Pts. NESE	11	40N/2W		
		Pts. S2NW, Pts. SW, Pts. W2SE	12	40N/2W		
		Pts. NWNE, Pts. NW, Pts. NESW	13	40N/2W		
		Pts. SESW, Pts. S2SE	9	41N/2W		
		Pts. W2NW	15	41N/2W		
		Pts. NE, Pts. NENW	16	41N/2W		
		Pts. NE, Pts. E2NW, Pts. NESW	21	41N/2W		
		Pts. N2SE, Pts. SWSE	21	41N/2W		
		Pts. SE	33	41N/2W		

Estimated Auction: Summer 2020

This sale is located approximately 7.0 air miles north and 1.0 air mile northeast of Deary, Idaho in the Little Sand Creek, Schwartz Creek, Corral Creek, Barn Creek, and Brush Creek drainages. This sale will be harvested utilizing overstory removal and clearcut silvicultural prescriptions. Ground based and cable yarding methods are required for this sale. Developments include approximately 1.0 mile of spur road new construction, 0.5 mile of spur road reconstruction, and 17.5 miles of spur road opening. The sale is adjacent to the Little Sand and Brush Creek Class I streams. Little Sand Creek is a tributary to the Palouse River, and Brush Creek is a tributary to the Potlatch River. The sale also has several Class II streams within and adjacent to the sale area, all of which are tributaries to the Palouse and Potlatch Rivers.

5	Lower Falls Cedar (Single Entry)	Pts. E2NW, Pts. NESW	24	39N/3E	121	5,665 MBF 3,000 Poles
		Pts. SESE	31	39N/3E		
		Pts. NESW, S2SW, NWSE, S2SE	32	39N/3E		

Estimated Auction: Summer 2020

This sale is located approximately 8.0 air miles southeast of Elk River, Idaho in the Falls Creek, Cranberry Creek, and Baldy Bear Creek drainages. This sale will be harvested utilizing clearcut silvicultural prescriptions. Helicopter, ground based and cable yarding methods are required for this sale. Developments include approximately 1.38 miles of spur road new construction, 1.11 miles of spur roads reconstruction, 8.06 miles of spur road opening, and 1.67 miles of spur road surfacing. The sale is adjacent to Class I streams and there are several intermittent Class II streams within the sale area, all of which are tributaries to Dworshak Reservoir.

IDAHO DEPARTMENT OF LANDS FY21 TIMBER SALE PLAN

July 1, 2020 – June 30, 2021

Maggie Creek
Supervisory Area

SALE NO.	SALE NAME	SUBDIVISION	SEC	T & R	APPROXIMATE	
					ACREAGE	VOLUME
1	Golden Glen	Pts. NESW, Pts. S2SW	11	34N/5E	220	5,055 MBF
		Pts. W2NE, Pts. NW	14	34N/5E		
		Pts. W2SW, Pts. SWSE	14	34N/5E		
		Pts. SESW	14	34N/5E		
		Pts. SWSE	15	34N/5E		
		Pts. NWNW	23	34N/5E		

Estimated Auction: Spring 2021

This sale is located approximately 10.0 miles northeast of Kooskia, Idaho in the North Fork of Maggie Creek and Maggie Creek drainages. Seed tree and overstory removal silvicultural prescriptions will be utilized. Harvesting operations will be accomplished using ground based and cable yarding systems. Spur road developments include approximately 2.60 miles of road reconstruction and 1.40 miles of road opening. There are no Class I streams adjacent or in the sale area. There are five Class II streams in the sale area.

2	Glenwood 120 Cedar (Single Entry)	Pts. S2SE	21	34N/5E	113	3,215 MBF 1,300 Poles
		Pts. NENE	28	34N/5E		

Estimated Auction: Summer 2020

This sale is located approximately 10.0 miles east of Kamiah, Idaho in the Lolo Creek drainage. A seed tree silvicultural prescription will be utilized. Harvesting operations will be accomplished using ground based and cable yarding systems. Spur road development work includes approximately 1.4 miles of new road construction and 0.5 mile of road reconstruction. There are no Class I streams adjacent or in the sale area, and there is one Class II stream in the sale area.

3	Dream Weaver	Pts. SW	36	36N/5E	189	4,050 MBF
		Pts. W2SE	36	36N/5E		
		Pts. S2NW	36	36N/5E		
		Pts. SWNE	36	36N/5E		

Estimated Auction: Fall 2020

This sale is located approximately 8.0 miles northeast of Weippe, Idaho in the Brown Creek and Weaver Creek drainages. One seed tree silvicultural prescription will be utilized. Harvesting operations will be accomplished using ground based systems. Proposed spur road development includes approximately 3.5 miles of new construction and 0.75 mile of reconstruction. Four Class II intermittent streams are present within the sale area with one Class I stream adjacent to the sale area.

IDAHO DEPARTMENT OF LANDS FY21 TIMBER SALE PLAN

July 1, 2020 – June 30, 2021

Maggie Creek Supervisory Area

SALE NO.	SALE NAME	SUBDIVISION	SEC	T & R	APPROXIMATE	
					ACREAGE	VOLUME
4	Swamp Engraver	Pts. Govt. Lots 3 & 4, Pts. S2NW	1	34N/4E	376	5,500 MBF
		Pts. N2SW	1	34N/4E		
		Pts. Govt. Lots 1 & 2, Pts. SENE	2	34N/4E		
		Pts. NESE	2	34N/4E		
		Pts. E2SW, Pts. NESE	35	35N/4E		
		Pts. S2SE	35	35N/4E		
		Pts. W2SW, Pts. SESW	36	35N/4E		

Estimated Auction: Spring 2021

This sale is located approximately 3.5 miles south of Weippe, Idaho in the Wilson Creek drainage. A shelterwood silvicultural prescription will be utilized. Harvesting will be accomplished using ground based yarding methods. Spur road developments include approximately 2.8 miles of reconstruction and 2.0 miles of opening. Three Class II intermittent streams are present within the sale area.

5	Fidlers Stash	Pts. S2S2, Pts. NESE	28	35N/4E	212	3,080 MBF
		Pts. NE, Pts. E2NW, Pts. N2SE	33	35N/4E		

Estimated Auction: Summer 2020

This sale is located approximately 3.0 miles southwest of Weippe, Idaho in the Incendiary Creek drainage and in the drainage of an unnamed Class II tributary of Lolo Creek. Clearcut, shelterwood and overstory removal silvicultural prescriptions will be utilized. Harvesting will be accomplished using ground based yarding methods. Spur road developments include approximately 0.65 mile of new construction, 1.3 miles of reconstruction, and 1.0 mile of opening. Two Class II intermittent streams exist within the sale area.

6	Fidlers Bane Pulp	Pts. NESE, Pts. W2SE, Pts. SW	16	35N/4E	339	2,975 MBF 1,120 Pulp
		Pts. SE	17	35N/4E		
		Pts. NENE	20	35N/4E		
		Pts. NW, Pts. NWNE	21	35N/4E		

Estimated Auction: Summer 2020

This sale is located approximately 1.5 miles west of Weippe, Idaho in the Schmidt Creek drainage. Overstory removal and clearcut silvicultural prescriptions will be utilized. Harvesting will be accomplished using ground based yarding methods. Spur road developments include approximately 0.33 mile of new construction, 0.94 mile of reconstruction and 3.5 miles of opening. One Class II intermittent stream exists immediately adjacent to the northwest portion of the sale area.

Additional small volume sales: 0 125 MBF

TOTALS: 1,449 24,000 MBF
1,120 Pulp
1,300 Poles

IDAHO DEPARTMENT OF LANDS FY21 TIMBER SALE PLAN

July 1, 2020 – June 30, 2021

Payette Lakes
Supervisory Area

SALE NO.	SALE NAME	SUBDIVISION	SEC	T & R	APPROXIMATE	
					ACREAGE	VOLUME
1	Skyhigh Ton	Pts.	2	14N/4E	183	12,000 Tons (2,120 MBF)
		Pts.	3	14N/4E		
		Pts.	10	14N/4E		
		Pts.	11	14N/4E		

Estimated Auction: Summer 2020

This sale is located about 7.0 air miles northeast of Cascade, Idaho in the Beaver Creek drainage. This sale will utilize a seed tree silvicultural prescription. Ground based and cable yarding methods will be utilized. Developments include approximately 9.8 miles of spur road opening and 5.3 miles of secondary road opening. All streams in the sale area are Class II.

2	Park West Ton	Pts.	25	17N/3E	252	15,480 Tons (2,735 MBF)
		Pts.	26	17N/3E		
		Pts.	35	17N/3E		
		Pts.	36	17N/3E		

Estimated Auction: Fall 2020

This sale is located about 9.0 air miles northwest from Council, Idaho in the Johnson Creek drainage. This sale will utilize a seed tree silvicultural prescription. Tractor/jammer yarding systems will be utilized. Developments include approximately 1.0 mile of spur road new construction, 4.0 miles of spur road opening and 1.3 miles of main road opening. Class I and Class II are located within the sale area.

3	Boulder Cop Ton	Pts.	20	18N/4E	559	38,205 Tons (6,750 MBF)
		Pts.	21	18N/4E		
		Pts.	28	18N/4E		
		Pts.	29	18N/4E		
		Pts.	33	18N/4E		

Estimated Auction: Fall 2020

This sale is located about 6.0 air miles southeast of McCall, Idaho in the Boulder Creek drainage. Seed tree, shelterwood, and clearcut silvicultural prescriptions will be utilized. The clearcuts total 108 acres in two units of 30 acres and 78 acres. Tractor/jammer yarding methods will be utilized. Developments include approximately 4.52 miles of secondary road opening, 9.10 miles of secondary road reconstruction and 0.79 mile of secondary road new construction. All streams in the sale area are Class II.

4	Rocky B Ton	Govt. Lots 2 & 3	3	14N/4E	231	13,244 Tons (2,340 MBF)
		Pts.	34	15N/4E		

Estimated Auction: Spring 2021

This sale is located about 10.0 air miles northeast of Cascade, Idaho in the Beaver Creek drainage. Seed tree and overstory removal silvicultural prescriptions will be utilized. Tractor/jammer and cable yarding methods will be utilized. Developments include approximately 1.0 mile of new spur road construction, 2.5 miles of spur road reconstruction, 0.5 mile of spur road opening, and 10.0 miles of secondary road opening. All streams within the sale area are Class II.

IDAHO DEPARTMENT OF LANDS FY21 TIMBER SALE PLAN

July 1, 2020 – June 30, 2021

Payette Lakes
Supervisory Area

SALE NO.	SALE NAME	SUBDIVISION	SEC	T & R	APPROXIMATE ACREAGE	APPROXIMATE VOLUME
5	Two Face Ton	Pts.	9	14N/4E	475	13,329 Tons (2,355 MBF)
		Pts.	10	14N/4E		
		Pts.	15	14N/4E		
		Pts.	16	14N/4E		
		Pts.	21	14N/4E		
		Pts.	22	14N/4E		

Estimated Auction: Spring 2021

This sale is located about 5.0 air miles northeast of Cascade, Idaho in the Beaver Creek and Pearsol Creek drainages. A seed tree silvicultural prescription will be utilized. Tractor/jammer and cable yarding methods will be utilized. Developments include approximately 7.6 miles of spur road opening, 5.0 miles of new spur road construction and 0.5 mile of spur road reconstruction. All streams in the sale area are Class II.

6	Hardball Ton	Pts.	36	21N/1E	240	28,200 Tons (4,700 MBF)
----------	---------------------	------	----	--------	-----	----------------------------

Estimated Auction: Spring 2021

This sale is located about 12.0 air miles northeast of New Meadows, Idaho in the Little Salmon river drainage. Seed tree and clearcut silvicultural prescriptions will be utilized. The clearcut is approximately 40 acres. Both tractor and cable yarding methods will be utilized. Developments include approximately 4.94 miles of spur road opening, approximately 0.90 mile of spur road reconstruction, and approximately 2.75 miles of spur road new construction. All streams in the sale area are Class II.

Additional small volume sales:	0	0 Tons 0 (MBF)
---------------------------------------	---	-------------------

TOTALS:	1,940	120,458 Tons (21,000 MBF)
----------------	-------	------------------------------

IDAHO DEPARTMENT OF LANDS FY21 TIMBER SALE PLAN

July 1, 2020 – June 30, 2021

Southwest
Supervisory Area

SALE NO.	SALE NAME	SUBDIVISION	SEC	T & R	APPROXIMATE ACREAGE	VOLUME
1	Packer Salvage	Pts.	2	10N/3E	1,770	12,000 MBF
		Pts.	3	10N/3E		
		Pts.	10	10N/3E		
		Pts.	11	10N/3E		
		Pts.	13	10N/3E		
		Pts.	14	10N/3E		
		Pts.	15	10N/3E		
		Pts.	16	10N/3E		
		Pts.	21	10N/3E		
		Pts.	22	10N/3E		
		Pts.	23	10N/3E		
		Pts.	24	10N/3E		
		Pts.	27	10N/3E		
		Pts.	28	10N/3E		
		Pts.	36	11N/3E		

Estimated Auction: Summer 2020

This salvage sale is located approximately 7.0 air miles south of Smiths Ferry, Idaho in the headwaters of Howell Creek, Scriver Creek, Murray Creek, and unnamed tributaries in the North Fork Payette River drainages. Silvicultural prescription is to salvage harvest tree species defoliated by a 2018 – 2019 Douglas-fir tussock moth outbreak. Salvage harvesting will create approximately 1,120 acres of clearcut and 650 acres of seed tree. Clearcut unit sizes are 139, 212, 327 and 442 acres respectively. This salvage sale was unforeseen and therefore, has not been previously available for public comment through the Idaho Department of Lands, "Notice of Proposed Sales" process. Tractor and cable yarding harvest systems are required. Approximately 3.0 miles of new spur road construction, 10.0 miles of spur road reconstruction, and 20.0 miles of spur road opening will be required. Class II streams are present within the sale area.

Additional small volume sales:	0	<u>0 MBF</u>
TOTALS:	1,770	12,000 MBF

IDAHO DEPARTMENT OF LANDS FY21 TIMBER SALE PLAN

July 1, 2020 – June 30, 2021

Eastern
Supervisory Area

SALE NO.	SALE NAME	SUBDIVISION	SEC	T & R	APPROXIMATE	
					ACREAGE	VOLUME
1	Lander Creek Ton	Pts. S2NE, Pts. S2	36	05S/44E	235	1,400 MBF 9,450 Tons

Estimated Auction: Spring 2021

This sale is located 16.0 air miles northeast of Soda Springs, Idaho. This sale is in the head waters of Lanes Creek and flows into Lanes Creek. Harvest prescription will be a Commercial Thin treatment. Tractor skidding will be utilized. Approximately 2.75 miles of spur road will be constructed. There are no Class I streams within the sale boundaries. There is a Class II stream (no name) on the private land which will be crossed for hauling.

2	July Creek Ton	Pts. All	36	011N/41E	558	3,620 MBF 24,436 Tons
----------	-----------------------	----------	----	----------	-----	--------------------------

Estimated Auction: Spring 2021

This sale is located 21.0 air miles northwest of Ashton, Idaho. This sale is in the July Creek drainage and flows into sand Creek which then flows into the Upper Arcadia Reservoir. Harvest prescription will be an Overstory removal – Shelterwood treatment. Tractor skidding will be utilized. Approximately 2.90 miles of secondary and 3.15 miles of spur roads will be opened and improved. There are no Class I or Class II streams within the sale boundaries.

Additional small volume sales: 0 MBF

TOTALS: 793 5,020 MBF
33,886 Tons