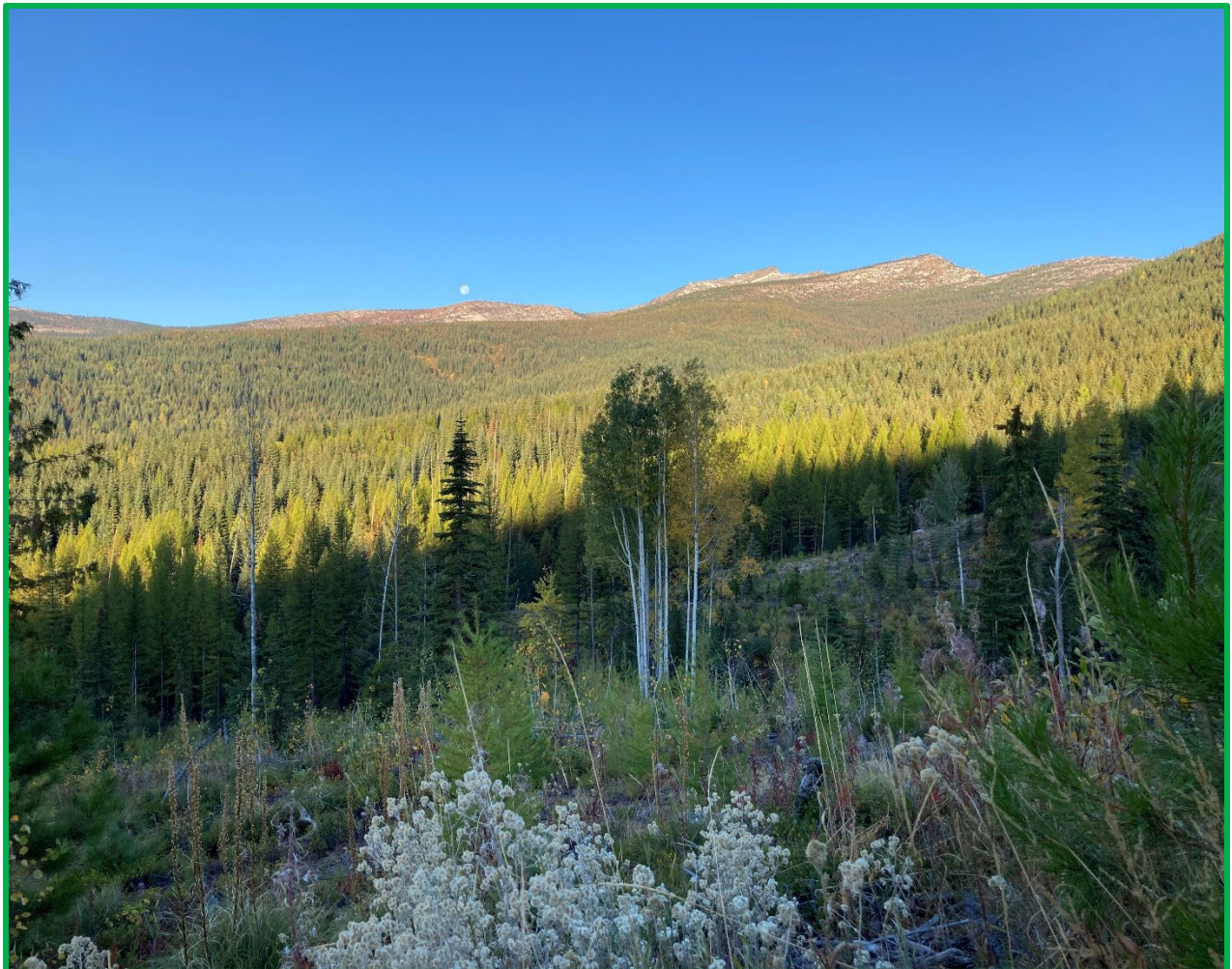


# **FISCAL YEAR 2024 TIMBER SALES PLAN**



# IDAHO DEPARTMENT OF LANDS FY24 TIMBER SALE PLAN

July 1, 2023 – June 30, 2024

## TABLE OF CONTENTS

Types of Sales .....	2
Supervisory Area Offices .....	3-4
Administrative Rules and Timber Sale Financing & Purchasing .....	5
Priest Lake .....	7-11
Pend Oreille Lake .....	12-16
Mica .....	17-18
St. Joe .....	19-24
Clearwater .....	25-28
Ponderosa .....	29-32
Maggie Creek .....	33-35
Payette Lakes .....	36-37
Southwestern Idaho .....	38-39
Eastern Idaho .....	40

## IDAHO DEPARTMENT OF LANDS FY24 TIMBER SALE PLAN

July 1, 2023 – June 30, 2024

### [Types of Sales](#)

Timber Sales Timber sales contain an estimated volume of at least 1,000 MBF and exceed the net appraised stumpage value for salvage sales established by the state board of land commissioners. Timber sales are designed to produce maximum stumpage returns to the endowment funds consistent with prudent long-term management practices.

Timber sales are advertised for four weeks in a newspaper in the county where the sale is located, and are sold at public auction.

Direct Sales Direct Sale net appraised stumpage value does not exceed the maximum value established by the State Board of Land Commissioners. This type of sale is to be used to harvest isolated or by-passed parcels of timber of insufficient value and volume to justify a salvage sale. The direct sale is not used where two or more potential purchasers may be interested in bidding on the forest products offered for sale.

The direct sale of forest product stumpage is made without advertisement as authorized by the Director.

## IDAHO DEPARTMENT OF LANDS FY24 TIMBER SALE PLAN

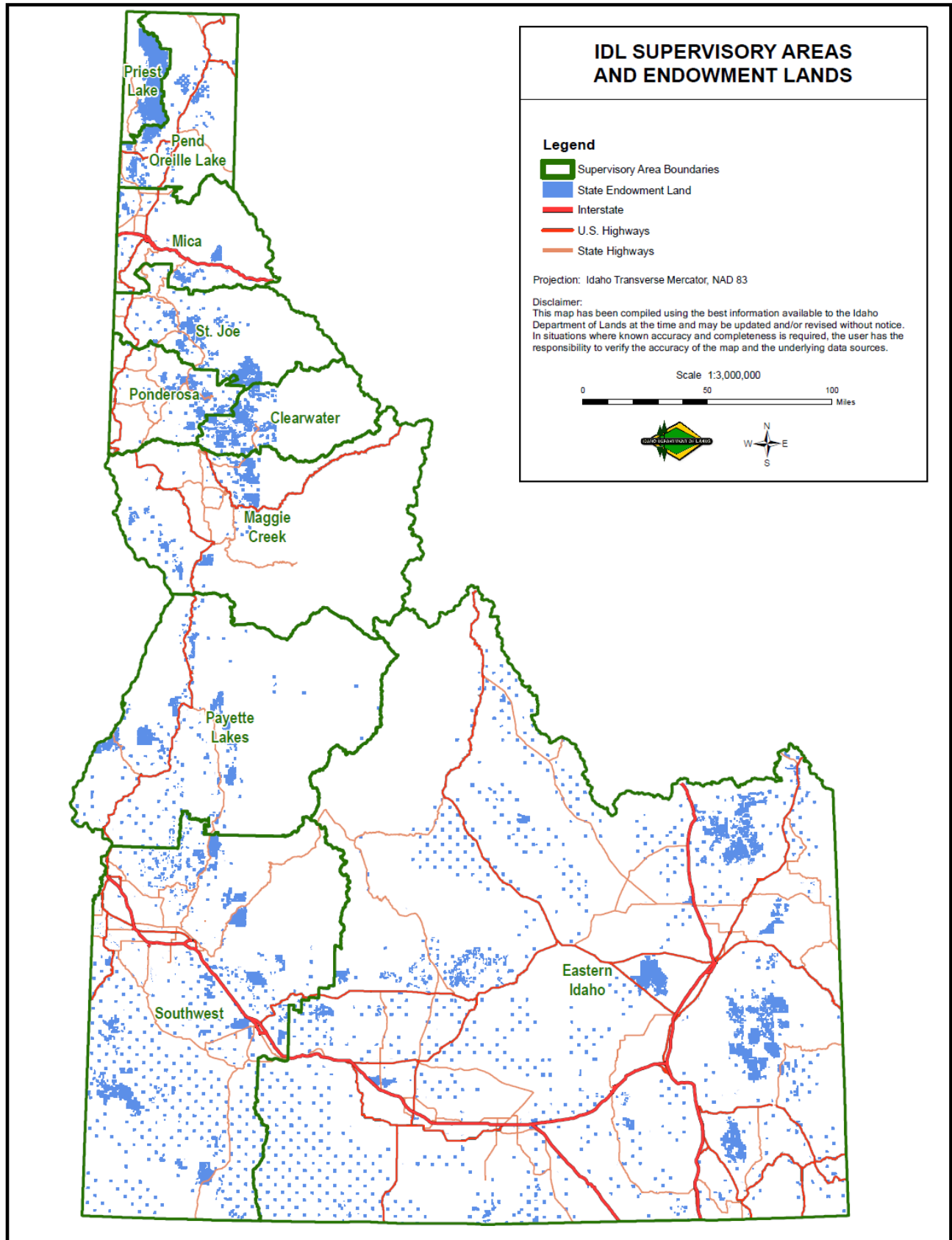
July 1, 2023 – June 30, 2024

### [Supervisory Area Offices](#)

<b><i>SUPERVISORY AREA</i></b>	<b><i>AREA SUPERVISOR</i></b>	<b><i>PHONE</i></b>
<b>Priest Lake</b> 4053 Cavanaugh Bay Road Coolin, ID 83821	Dan Brown	(208) 443-2516
<b>Pend Oreille Lake</b> 2550 Highway 2 West Sandpoint, ID 83864	Erik Sjoquist	(208) 263-5104
<b>Mica</b> 3706 Industrial Avenue S Coeur d'Alene, ID 83815	Andrew Smyth	(208) 769-1577
<b>St. Joe</b> 1806 Main Avenue St. Maries, ID 83861	Tony Brede	(208) 245-4551
<b>Ponderosa</b> 3130 Highway 3 Deary, ID 83823	Chris Tretter	(208) 877-1121
<b>Clearwater</b> 10230 Highway 12 Orofino, ID 83544	Jay Sila	(208) 476-4587
<b>Maggie Creek</b> 913 Third Street Kamiah ID 83536	Dave Schwartz	(208) 935-2141
<b>Payette Lakes</b> 555 Deinhard Lane McCall, ID 83638	Scott Corkill	(208) 634-7125
<b>Southwest/South Central</b> 8355 W. State Street Boise, ID 83703	Dean Johnson	(208) 334-3488
<b>Eastern Idaho</b> 3563 Ririe Highway Idaho Falls, ID 83401	Pat Brown	(208) 525-7167

# IDAHO DEPARTMENT OF LANDS FY24 TIMBER SALE PLAN

July 1, 2023 – June 30, 2024



## **IDAHO DEPARTMENT OF LANDS FY24 TIMBER SALE PLAN**

July 1, 2023 – June 30, 2024

### **Administrative Rules and Purchaser Sale Requirements**

*Links to detailed information on the internet are provided below.*

#### **Administrative Rules of the Department of Lands**

[20.02.14 – Selling Forest Products on State-Owned Endowment Lands](#)

For information regarding timber sale procedures, bidding procedures, bonding requirements and insurance requirements, click on the link below.

[Purchaser Sale Requirements](#)

# Idaho Department of Lands

## Fiscal Year 2024 Proposed Timber Sale Plan

This Fiscal Year 2024 Proposed Timber Sale Plan will be presented to the Idaho Board of Land Commissioners at the April 2023 Land Board meeting for approval.

All timber sales listed on the 2024 Proposed Timber Sale Plan have been available for public review on the Notice of Proposed Future Sales on the IDL timber sale website since May 2021.

Comments regarding this proposed plan will be accepted until March 31, 2023. Send comments, preferably via email, to:

Spencer Hanson  
Idaho Department of Lands  
Timber Sale Program Manager  
Email address: [shanson@idl.idaho.gov](mailto:shanson@idl.idaho.gov)  
3284 W. Industrial Loop  
Coeur d'Alene, ID 83815



# IDAHO DEPARTMENT OF LANDS FISCAL YEAR 2024 TIMBER SALE PLAN

July 1, 2023 - June 30, 2024

## Priest Lake Supervisory Area

Sale Name:

### 4 Corner Flat

Estimated Auction: Spring 2024  
Location: 3 Miles S. of Coolin  
Drainages: Priest River  
Class I Streams: No  
Class II Streams: No  
Silvicultural Prescription: Seedtree  
Harvest System: Ground Based

APPROXIMATE

ACREAGE:  
766 acres

VOLUME:  
2,200 MBF

### Timber Sale Legal Description

Subsection	Section	Township	Range
Pts. N2SW, Pts W2SE, S2SW	27	059N	004W
Pts. N2SW, Pts. N2SE, S2SW, S2SE	28	059N	004W
Pts. SE	29	059N	004W
Pts. NENE	32	059N	004W
N2NE, SENE, NENW, NESE, Pts. SWNE, Pts. NWNW, Pts. SENW, Pts. NWSE, Pts. SESE	33	059N	004W
Pts. NWNE, Pts. E2NW, Pts. NWSW, W2NW	34	059N	004W

Sale Name:

### Big Cool

Estimated Auction: Winter 2024  
Location: 1.5 Miles SW of Coolin  
Drainages: Priest River  
Class I Streams: No  
Class II Streams: Yes  
Silvicultural Prescription: Seedtree  
Harvest System: Ground Based and Cable Yarding

APPROXIMATE

ACREAGE:  
315 acres

VOLUME:  
2,200 MBF

### Timber Sale Legal Description

Subsection	Section	Township	Range
Pts. SWSW	15	059N	004W
Pts. N2SW, Pts. SWSW, Pts. S2SE, SESW	16	059N	004W
Pts. SESE	17	059N	004W
Pts. NENE	20	059N	004W
NENW, Pts. N2NE, Pts. SENE, Pts. NWNW, Pts. SENW	21	059N	004W



# IDAHO DEPARTMENT OF LANDS FISCAL YEAR 2024 TIMBER SALE PLAN

July 1, 2023 - June 30, 2024

## Priest Lake Supervisory Area

Sale Name:

### Chicopee Cedar

Estimated Auction: Summer 2023

Location: 8 Miles SE of Coolin

Drainages: Middle Fork

Class I Streams: Yes

Class II Streams: Yes

Silvicultural Prescription: Clearcut, Seedtree

Harvest System: Ground Based and Cable Yarding

APPROXIMATE

ACREAGE:  
292 acres

VOLUME:  
3,400 MBF  
1,000 Poles

### Timber Sale Legal Description

Subsection	Section	Township	Range
Pts. S2NW, Pts. SW, Pts. W2SE	03	058N	003W
Pts. N2NE, Pts. SWNE, Pts. N2NW, Pts. SENW, Pts. NESW, Pts. N2SE, SENE	10	058N	003W
Pts. NW, Pts. N2SW, Pts. SESW, Pts. W2SE	11	058N	003W

Sale Name:

### Little Goblin

Estimated Auction: Spring 2024

Location: 10 Miles NE of Coolin

Drainages: Indian Creek

Class I Streams: Yes

Class II Streams: Yes

Silvicultural Prescription: Clearcut, Seedtree

Harvest System: Ground Based and Cable Yarding

APPROXIMATE

ACREAGE:  
180 acres

VOLUME:  
3,500 MBF

### Timber Sale Legal Description

Subsection	Section	Township	Range
Pts. SESE	07	061N	003W
Pts. S2SW, Pts. SWSE	08	061N	003W
N2NW, SWNW, NWSW, Pts. W2NE, Pts. SENW, Pts. NESW, Pts. S2SW	17	061N	003W
Pts. Gov Lots 2, 3, 4, Pts. Gov Lots 3, 4, Pts. N2NE, Pts. E2NW, Pts. E2SW, Pts. SE,	18	061N	003W
S2NE, Pts. Gov Lots 2, 3, 4, Pts. Gov Lots 3, 4, Pts. N2NE, Pts. E2NW, Pts. E2SW,	18	061N	003W
Pts. SE, S2NE Pts. E2SE	13	061N	004W

# IDAHO DEPARTMENT OF LANDS FISCAL YEAR 2024 TIMBER SALE PLAN

July 1, 2023 - June 30, 2024

## Priest Lake Supervisory Area

Sale Name:

**NOSR DP**

Estimated Auction: Winter 2024

Location: 5 Miles SE of Coolin

Drainages: North Fork East River

Class I Streams: No

Class II Streams: Yes

Silvicultural Prescription: Overstory Removal

Harvest System: Ground Based and Cable Yarding

APPROXIMATE

ACREAGE:  
298 acres

VOLUME:  
2,000 MBF

### Timber Sale Legal Description

Subsection	Section	Township	Range
Pts. Gov Lots 2, Pts. SWNE, Pts. E2SW, Pts. NWSE, Pts. S2SE	02	058N	004W
Pts. Gov Lots 1, 2, 3, Pts. NE, Pts. SENW, Pts. NESW, Pts. SE	19	059N	003W
Pts. SWNW	20	059N	003W
Pts. E2NE, Pts. NESE	24	059N	004W

Sale Name:

**Peakabou Pulp**

Estimated Auction: Spring 2024

Location: 23 Miles NE of Coolin

Drainages: Caribou Creek

Class I Streams: Yes

Class II Streams: Yes

Silvicultural Prescription: Clearcut

Harvest System: Ground Based and Cable Yarding

APPROXIMATE

ACREAGE:  
656 acres

VOLUME:  
5,000 MBF  
8,000 Pulp

### Timber Sale Legal Description

Subsection	Section	Township	Range
NESW, NWSE, Pts. S2NE, Pts. S2NW, Pts. NWSW, Pts. S2SW, Pts. NESE, Pts. S2SE	17	063N	003W
Pts. NE, Pts. SENW, Pts. NESW, Pts. N2SE, Pts. SESE	18	063N	003W
Pts. W2NE, Pts. N2NW, Pts. SENW, Pts. NESW, Pts. SE	20	063N	003W
Pts. N2NE	29	063N	003W
Pts. NESW, Pts. S2SW, Pts. SWSE	13	063N	004W
Pts. E2NE	23	063N	004W
Pts. N2NW, Pts. SWNW, Pts. E2SW, Pts. W2SE	24	063N	004W
Pts. W2NE, Pts. NW	25	063N	004W
Pts. E2NE, Pts. S2SW	26	063N	004W
Pts. N2NW	35	063N	004W

# IDAHO DEPARTMENT OF LANDS FISCAL YEAR 2024 TIMBER SALE PLAN

July 1, 2023 - June 30, 2024

## Priest Lake Supervisory Area

Sale Name:

### Sergent Fenton

Estimated Auction: Summer 2023

Location: 4 Miles NE of Coolin

Drainages: Fenton Creek

Class I Streams: Yes

Class II Streams: Yes

Silvicultural Prescription: Seedtree

Harvest System: Ground Based and Cable Yarding

APPROXIMATE

ACREAGE:  
254 acres

VOLUME:  
3,500 MBF

### Timber Sale Legal Description

Subsection	Section	Township	Range
Pts. Gov Lots 4	01	059N	004W
Pts. Gov Lots 1, 2, 5, 6	02	059N	004W
Pts. Gov Lots 1, 3, Pts. W2NE, Pts. E2SW, Pts. W2SE	26	060N	004W
Pts. NE, Pts. NENW, Pts. SESW, Pts. SE	35	060N	004W
Pts. SWNE, Pts. S2NW, Pts. N2SW, Pts. SWSW	36	060N	004W

Sale Name:

### Uleda Creek Cedar

Estimated Auction: Summer 2023

Location: 8 Miles SE of Coolin

Drainages: Middle Fork East River

Class I Streams: Yes

Class II Streams: Yes

Silvicultural Prescription: Clearcut, Seedtree

Harvest System: Ground Based and Cable Yarding

APPROXIMATE

ACREAGE:  
178 acres

VOLUME:  
2,700 MBF  
1,000 Poles

### Timber Sale Legal Description

Subsection	Section	Township	Range
Pts. E2SW, Pts. W2SE	15	058N	003W
Pts. NE, Pts. NENW, Pts. NESE	22	058N	003W
Pts. W2NW, Pts. N2SW	23	058N	003W

# IDAHO DEPARTMENT OF LANDS FISCAL YEAR 2024 TIMBER SALE PLAN

July 1, 2023 - June 30, 2024

## Priest Lake Supervisory Area

Sale Name:

**Two Bear Over**

Estimated Auction: Summer 2023

Location: 13 Miles N. of Coolin

Drainages: Bear Creek

Class I Streams: Yes

Class II Streams: Yes

Silvicultural Prescription: Clearcut, Overstory Removal

Harvest System: Ground Based and Cable Yarding

APPROXIMATE

ACREAGE:  
916 acres

VOLUME:  
3,500 MBF

### Timber Sale Legal Description

Subsection	Section	Township	Range
Pts. Gov Lots 2, 3, 4, Pts. SWNE, Pts. S2NW, Pts. SW, Pts. SE	02	061N	004W
Pts. Gov Lots 1, 2, 6, Pts. SENE, Pts. SE	03	061N	004W
Pts. Gov Lots 1, Pts. N2NE, Pts. SENE, Pts. NENW, Pts. S2NW, Pts. N2SW, Pts. SWSW	10	061N	004W
Pts. NWNE, Pts. N2NW, Pts. SWNW	11	061N	004W
Pts. Gov Lots 3, Pts. E2SW, Pts. SE	19	062N	003W
Pts. Gov Lots 1, 2, Pts. E2NW	14	062N	004W
Pts. Gov Lots 2	15	062N	004W
Pts. Gov Lots 1, 2, 3, 4, Pts. W2SE	22	062N	004W
Pts. W2NE, Pts. SENW, Pts. NESW, Pts. SWSW, Pts. W2SE, SESW	24	062N	004W
Pts. NWNE, Pts. NW, Pts. N2SW	25	062N	004W
Pts. SENE	26	062N	004W
Pts. Gov Lots 2	34	062N	004W
Pts. SWSE	35	062N	004W

## Supervisory Area Totals: Priest Lake

Supervisory Area Acres: 3,855 acres  
Supervisory Area Total Sawlog: 28,000 MBF  
Supervisory Area Total Cedar Poles: 2,000 Cedar Poles  
Supervisory Area Total Pulp: 8,000 MBF

# IDAHO DEPARTMENT OF LANDS FISCAL YEAR 2024 TIMBER SALE PLAN

July 1, 2023 - June 30, 2024

## Pend Oreille Lake Supervisory Area

Sale Name:

### Careywood Chop Cedar

Estimated Auction: Fall 2023

Location: 3 miles east of Careywood

Drainages: Careywood Creek

Class I Streams: Yes

Class II Streams: Yes

Silvicultural Prescription: Clearcut, Overstory Removal, Seedtree

Harvest System: Ground based

APPROXIMATE

ACREAGE:  
249 acres

VOLUME:  
5,395 MBF  
430 Poles

### Timber Sale Legal Description

Subsection	Section	Township	Range
Pts. W2SE, Pts. SESE	09	T54N	R02W
Pts. N2, Pts. SW, Pts. N2SE	16	T54N	R02W
NWSW, Pts. NE, Pts. NW, Pts. NESW, Pts. S2SW, Pts. N2SE	16	T54N	R02W

Sale Name:

### East Elmira Cedar

Estimated Auction: Summer 2023

Location: 2 miles east of Elmira

Drainages: Bloom Lake

Class I Streams: No

Class II Streams: Yes

Silvicultural Prescription: Clearcut, Overstory Removal

Harvest System: Ground based and prescriptive

APPROXIMATE

ACREAGE:  
172 acres

VOLUME:  
3,310 MBF  
220 Poles

### Timber Sale Legal Description

Subsection	Section	Township	Range
Pts. Gov Lots 3, 4, Pts. SENW, Pts. NESW, Pts. S2SW	01	T59N	R01W
Pts. NW, Pts. N2SW	12	T59N	R01W

# IDAHO DEPARTMENT OF LANDS FISCAL YEAR 2024 TIMBER SALE PLAN

July 1, 2023 - June 30, 2024

## Pend Oreille Lake Supervisory Area

Sale Name:

### Lower Curtis Cedar

Estimated Auction: Winter 2024

Location: 6 miles south of Priest River, ID

Drainages: Curtis Creek

Class I Streams: Yes

Class II Streams: Yes

Silvicultural Prescription: Clearcut, Overstory Removal

Harvest System: Ground based and prescriptive

APPROXIMATE

ACREAGE:  
220 acres

VOLUME:  
6,367 MBF  
350 Poles

### Timber Sale Legal Description

Subsection	Section	Township	Range
Pts. Gov Lots 4, Pts. SWNE, Pts. SENW, Pts. SW, Pts. W2SE	24	T55N	R05W
Pts. Gov Lots 1, 2, 3, 4, Pts. NWNE, Pts. N2NW, Pts. SWNW, Pts. SESW, Pts. W2SE	25	T55N	R05W

Sale Name:

### More Otts Cedar

Estimated Auction: Summer 2023

Location: 6 miles southwest of Sandpoint, ID

Drainages: Otts Basin

Class I Streams: No

Class II Streams: Yes

Silvicultural Prescription: Clearcut, Overstory Removal

Harvest System: Ground based and prescriptive

APPROXIMATE

ACREAGE:  
649 acres

VOLUME:  
6,650 MBF  
200 Poles

### Timber Sale Legal Description

Subsection	Section	Township	Range
Gov Lot 2, Pts. Gov Lots 3, 4, Pts. SESW, Pts. E2SE, SENW, NESW, W2SE	07	T56N	R02W
Gov Lot 4, Pts. Gov Lots 1, 2, 3, NENW, Pts. SENW, Pts. E2SW	18	T56N	R02W
Pts. Gov Lots 1, 2, 3	19	T56N	R02W
Pts. S2SE	12	T56N	R03W
Pts. N2NE, Pts. SENE	13	T56N	R03W

# IDAHO DEPARTMENT OF LANDS FISCAL YEAR 2024 TIMBER SALE PLAN

July 1, 2023 - June 30, 2024

## Pend Oreille Lake Supervisory Area

Sale Name:

### Ridge Runner

Estimated Auction: Spring 2024  
Location: 5 miles northeast of Naples, ID  
Drainages: Highland Creek  
Class I Streams: No  
Class II Streams: Yes  
Silvicultural Prescription: Clearcut, Seedtree  
Harvest System: Ground based and prescriptive

APPROXIMATE

ACREAGE:  
86 acres

VOLUME:  
1,785 MBF

### Timber Sale Legal Description

Subsection	Section	Township	Range
Pts. S2	20	T61N	R01W

Sale Name:

### River View

Estimated Auction: Summer 2023  
Location: 1 mile southeast Priest River  
Drainages: Pend Orielle River  
Class I Streams: No  
Class II Streams: No  
Silvicultural Prescription: Clearcut  
Harvest System: Ground based

APPROXIMATE

ACREAGE:  
110 acres

VOLUME:  
1,840 MBF

### Timber Sale Legal Description

Subsection	Section	Township	Range
Pts. Gov Lots 2, 3, Pts. SENW, Pts. SESW	05	T55N	R04W
Pts. N2NW, Pts. SWNW	08	T55N	R04W

Sale Name:

### Rocky Pine Cedar

Estimated Auction: Winter 2024  
Location: 6.5 miles northeast of Priest River, ID  
Drainages: Pine Creek  
Class I Streams: No  
Class II Streams: Yes  
Silvicultural Prescription: Clearcut, Overstory Removal, Seedtree  
Harvest System: Gound based and cable

APPROXIMATE

ACREAGE:  
171 acres

VOLUME:  
2,400 MBF  
400 Poles

### Timber Sale Legal Description

Subsection	Section	Township	Range
Pts. SESW	21	T57N	R04W
Pts. W2NW, Pts. S2SW	27	T57N	R04W
Pts. NE, Pts. NW, Pts. E2SE	28	T57N	R04W
Pts. NWNW	34	T57N	R04W

# IDAHO DEPARTMENT OF LANDS FISCAL YEAR 2024 TIMBER SALE PLAN

July 1, 2023 - June 30, 2024

## Pend Oreille Lake Supervisory Area

Sale Name:

### Steep Ranger

Estimated Auction: Fall 2023

Location: 8 miles north of Priest River, ID

Drainages: Ranger Creek

Class I Streams: Yes

Class II Streams: Yes

Silvicultural Prescription: Clearcut, Seedtree

Harvest System: Ground based and cable

APPROXIMATE

ACREAGE:  
125 acres

VOLUME:  
2,400 MBF

### Timber Sale Legal Description

Subsection	Section	Township	Range
Pts. SESW, Pts. SE	09	T57N	R04W
Pts. SWNE, Pts. NESW, Pts. S2SW, Pts. W2SE	10	T57N	R04W
Pts. N2NW	15	T57N	R04W

Sale Name:

### Sundance Kid

Estimated Auction: Fall 2023

Location: 5 miles west of Naples, ID

Drainages: Highland Creek

Class I Streams: Yes

Class II Streams: Yes

Silvicultural Prescription: Clearcut, Overstory Removal, Seedtree

Harvest System: Ground Based

APPROXIMATE

ACREAGE:  
262 acres

VOLUME:  
4,855 MBF

### Timber Sale Legal Description

Subsection	Section	Township	Range
Pts. Gov Lots 4	05	T60N	R01W
Pts. N2NE, Pts. SWNE, Pts. E2SW, Pts. SE, SENE	30	T61N	R01W
Pts. NE, Pts. NWNW, Pts. S2NW, Pts. SW	32	T61N	R01W



IDAHO DEPARTMENT OF LANDS FISCAL YEAR 2024 TIMBER SALE PLAN

July 1, 2023 - June 30, 2024

**Pend Oreille Lake  
Supervisory Area**

Sale Name:

**The Last Sand Cedar**

Estimated Auction: Spring 2024

Location: 4 miles east of Elmira, ID

Drainages: Sand Lake

Class I Streams: No

Class II Streams: Yes

Silvicultural Prescription: Clearcut, Overstory Removal

Harvest System: Ground based and prescriptive

APPROXIMATE

ACREAGE:  
160 acres

VOLUME:  
1,560 MBF  
100 Poles

Timber Sale Legal Description

Subsection	Section	Township	Range
Pts. Gov Lots 1, 2, 3, N2SE, Pts. S2NE, Pts. SENW, Pts. E2SW, Pts. SWSE	06	T59N	R01E

**Supervisory Area Totals: Pend Oreille Lake**

Supervisory Area Acres: 2,204 acres  
Supervisory Area Total Sawlog: 36,565 MBF  
Supervisory Area Total Cedar Poles: 1,700 Cedar Poles

# IDAHO DEPARTMENT OF LANDS FISCAL YEAR 2024 TIMBER SALE PLAN

July 1, 2023 - June 30, 2024

## Mica Supervisory Area

Sale Name:

### Bear Basin

Estimated Auction: Fall 2023  
Location: 3 Miles NE Pinehurst  
Drainages: Bear Creek  
Class I Streams: Yes  
Class II Streams: Yes  
Silvicultural Prescription: Clearcut  
Harvest System: Tractor and Cable

APPROXIMATE

ACREAGE:  
479 acres

VOLUME:  
6,000 MBF

### Timber Sale Legal Description

Subsection	Section	Township	Range
Pts. S2SW, Pts. SE	22	049N	002E
Pts. S2NW, Pts. N2SW, Pts. SWSW	23	049N	002E
NWNW	26	049N	002E
N2NE, NENW, S2NW, Pts. NWNW	27	049N	002E

Sale Name:

### Stateline Cable

Estimated Auction: Spring 2024  
Location: 5 Miles S Stateline  
Drainages: Cable Creek  
Class I Streams: Yes  
Class II Streams: Yes  
Silvicultural Prescription: Clearcut, Seedtree  
Harvest System: Tractor and Cable

APPROXIMATE

ACREAGE:  
295 acres

VOLUME:  
3,000 MBF

### Timber Sale Legal Description

Subsection	Section	Township	Range
Govt. Lots 1&2, NENE, Pts. W2NE, Pts. SENE, Pts. E2NW, Pts. N2SE, Pts. SWSE, SESE	36	050N	006W

Sale Name:

### Twin Chilco OSR

Estimated Auction: Spring 2024  
Location: 1 Mile E Chilco  
Drainages: Sage Creek, Twin Lakes  
Class I Streams: No  
Class II Streams: Yes  
Silvicultural Prescription: Overstory Removal  
Harvest System: Tractor

APPROXIMATE

ACREAGE:  
375 acres

VOLUME:  
3,000 MBF

### Timber Sale Legal Description

Subsection	Section	Township	Range
Govt. Lots 1-3, N2NE, NENW, Pts. S2NE, Pts. SENW, Pts. NESW, Pts. NWSE	16	052N	003W
NW	36	053N	005W

# IDAHO DEPARTMENT OF LANDS FISCAL YEAR 2024 TIMBER SALE PLAN

July 1, 2023 - June 30, 2024

## Mica Supervisory Area

Sale Name:

**West Latour**

Estimated Auction: Spring 2024

Location: 5.5 Miles S Rose Lake

Drainages: Latour Creek

Class I Streams: Yes

Class II Streams: Yes

Silvicultural Prescription: Clearcut, Overstory Removal

Harvest System: Tractor and Cable

APPROXIMATE

ACREAGE:  
574 acres

VOLUME:  
6,000 MBF

Timber Sale Legal Description				
Subsection		Section	Township	Range
Govt. Lots 2, 5, 6, 8, 12, 13, Pts. Govt. Lots 1, 3, 4, 7, 9, 11, 14, Pts. SWNE, Pts. S2NW, Pts.		03	047N	001W
Pts. Govt. Lots 1, 5-13, Pts. SENE, Pts. SWSE, Pts. SESW, Pts. NWSW		04	047N	001W
Pts. SENW, Pts. SESW, Pts. SWSE		27	048N	001W
Pts. Govt. Lot 1		33	048N	001W
Pts. Govt Lot 1, Pts. NENW		34	048N	001W
Pts. Govt. Lots 1&3		16	47N	01W
Pts. Govt. Lot 8		9	47N	01W

## Supervisory Area Totals: Mica

Supervisory Area Acres: 1,722 acres  
Supervisory Area Total Sawlog: 18,000 MBF

# IDAHO DEPARTMENT OF LANDS FISCAL YEAR 2024 TIMBER SALE PLAN

July 1, 2023 - June 30, 2024

## St. Joe Supervisory Area

Sale Name:

### Finns Elk

Estimated Auction: Spring 2024

Location: 6 mile NE of Santa, Id

Drainages: Pokey, Davis, and Garveson creeks

Class I Streams: Yes

Class II Streams: Yes

Silvicultural Prescription: Clearcut, Seedtree, Shelterwood

Harvest System: Ground Based, Cable

APPROXIMATE

ACREAGE:  
323 acres

VOLUME:  
9,040 MBF

### Timber Sale Legal Description

Subsection	Section	Township	Range
Pts. SENW, NESW, S2SW, W2SE, SWNE	2	44 N	1 W
Pts. NE, E2NW, NESW, N2SE, SESE	20	45 N	1 E
Pts. NW	32	45 N	1 E

Sale Name:

### First Place Cedar

Estimated Auction: Spring 2024

Location: 5 miles W of Fernwood

Drainages: Tyson Creek, Little Carpenter Creek, Carpenter Creek

Class I Streams: Yes

Class II Streams: Yes

Silvicultural Prescription: Clearcut

Harvest System: Ground Based, Cable

APPROXIMATE

ACREAGE:  
216 acres

VOLUME:  
6,715 MBF  
730 Poles

### Timber Sale Legal Description

Subsection	Section	Township	Range
Pts. SW, Pts. N2SE, Pts. SWSE	15	43N	01W
Pts. N2NW	22	43N	01W
Pts. S2SW	24	43N	01W
Pts. N2NW, Pts. SWNW	25	43N	01W
Pts. E2NE, Pts. N2SW, Pts. SWSW	5	43N	01W

# IDAHO DEPARTMENT OF LANDS FISCAL YEAR 2024 TIMBER SALE PLAN

July 1, 2023 - June 30, 2024

## St. Joe Supervisory Area

Sale Name:

### Huckleberry Grouse

Estimated Auction: Winter 2024

Location: 4.9 mi. SE Calder, ID

Drainages: Mica, Marble

Class I Streams: No

Class II Streams: Yes

Silvicultural Prescription: Clearcut, Seedtree

Harvest System: Ground Based, Cable

APPROXIMATE

ACREAGE:  
310 acres

VOLUME:  
7,790 MBF

### Timber Sale Legal Description

Subsection	Section	Township	Range
Pts. Govt. Lots 3-5, Pts. SWNE, Pts. SENW	6	44N	03E
Pts. Govt. Lots 1-4, Pts. W2NE, Pts. N2NW, Pts. SWSE	36	45N	02E

Sale Name:

### Keel Over OSR

Estimated Auction: Fall 2023

Location: 4 Miles South of Clarkia, ID

Drainages: West Fork Saint Maries River

Class I Streams: Yes

Class II Streams: Yes

Silvicultural Prescription: Clearcut, Overstory Removal, Seedtree

Harvest System: Ground Based, Cable

APPROXIMATE

ACREAGE:  
258 acres

VOLUME:  
6,595 MBF

### Timber Sale Legal Description

Subsection	Section	Township	Range
Pts. SESE	23	42N	01E
Pts. SWSW	24	42N	01E
Pts. W2NW, Pts. NWSW	25	42N	01E
Pts. NENE, Pts. S2NE, Pts. SE	26	42N	01E
Pts. N2NE	35	42N	01E

# IDAHO DEPARTMENT OF LANDS FISCAL YEAR 2024 TIMBER SALE PLAN

July 1, 2023 - June 30, 2024

## St. Joe Supervisory Area

Sale Name:

### Lively Alderaan

Estimated Auction: Spring 2024

Location: 5 Miles SW of Emida ID.

Drainages: Willow Creek

Class I Streams: No

Class II Streams: Yes

Silvicultural Prescription: Clearcut, Shelterwood

Harvest System: Ground Based, Cable

APPROXIMATE

ACREAGE:  
157 acres

VOLUME:  
3,612 MBF

### Timber Sale Legal Description

Subsection	Section	Township	Range
Pts. NWNE, Pts. S2NE, Pts. NENW, Pts. S2NW, Pts. N2SW, Pts. N2SE	14	T43N	R03W
Pts. N2NESE, Pts. SENESE	15	T43N	R03W

Sale Name:

### Mid Olson

Estimated Auction: Winter 2024

Location: 5 Miles NE of Fernwood, ID

Drainages: Olson Creek

Class I Streams: Yes

Class II Streams: Yes

Silvicultural Prescription: Clearcut, Overstory Removal, Shelterwood

Harvest System: Ground Based, Cable

APPROXIMATE

ACREAGE:  
414 acres

VOLUME:  
7,249 MBF

### Timber Sale Legal Description

Subsection	Section	Township	Range
Pts. SW, Pts. SWSE	25	44N	01E
Pts.	26	44N	01E
Pts.	35	44N	01E
Pts. NWNE, Pts. N2NE, Pts. SWNW	36	44N	01E

# IDAHO DEPARTMENT OF LANDS FISCAL YEAR 2024 TIMBER SALE PLAN

July 1, 2023 - June 30, 2024

## St. Joe Supervisory Area

Sale Name:

### Retired Sawing Cedar

Estimated Auction: Fall 2023

Location: Floodwood

Drainages: Cedar Creek-Floodwood Creek

Class I Streams: Yes

Class II Streams: Yes

Silvicultural Prescription: Clearcut

Harvest System: Ground Based, Cable

APPROXIMATE

ACREAGE:  
171 acres

VOLUME:  
8,150 MBF  
2,660 Poles

### Timber Sale Legal Description

Subsection	Section	Township	Range
Pts. NWNE, Pts. NENW	10	41N	4E
Pts. S2NW, Pts. NESW, Pts. W2SW	3	41N	5E
Pts. SENE, Pts. SE	4	41N	5E

Sale Name:

### Smith Sandwich

Estimated Auction: Fall 2023

Location: 20.5 Miles SE of Clarkia

Drainages: North Fork Clearwater

Class I Streams: No

Class II Streams: Yes

Silvicultural Prescription: Clearcut, Seedtree

Harvest System: Ground Based, Cable

APPROXIMATE

ACREAGE:  
225 acres

VOLUME:  
7,814 MBF

### Timber Sale Legal Description

Subsection	Section	Township	Range
Pts. SW	36	41N	04E
Pts. SW	11	41N	05E
Pts. NWNW, Pts. SW	13	41N	05E
Pts. E2NE	23	41N	05E
Pts. NE, Pts. W2NW	24	41N	05E
Pts. NWNE, Pts. N2NW	25	41N	05E
Pts. N2NE	26	41n	05e
Pts. N2NE, Pts. E2NW	28	41N	05E
Pts. S2NW, Pts. N2SW	31	41N	05E
Pts. SW	4	41N	05E
Pts. SENE, Pts. N2SW	20	41N	5E
Pts. SWNE, Pts. S2NW, Pts. NWSW, Pts. S2SE	21	41N	5E

# IDAHO DEPARTMENT OF LANDS FISCAL YEAR 2024 TIMBER SALE PLAN

July 1, 2023 - June 30, 2024

## St. Joe Supervisory Area

Sale Name:

**Stanton Something Cedar**

Estimated Auction: Fall 2023

Location: 33 Road Miles E of Clarkia ID

Drainages: Stanton Creek, Dworshak Reservoir

Class I Streams: Yes

Class II Streams: Yes

Silvicultural Prescription: Clearcut, Overstory Removal, Shelterwood

Harvest System: Ground Based, Cable, Shovel

APPROXIMATE

ACREAGE:  
520 acres

VOLUME:  
10,730 MBF  
175 Poles

Timber Sale Legal Description				
Subsection		Section	Township	Range
Pts. SESW, Pts. SWSE		1	41N	04E
Pts. S2NE, Pts. S2		11	41N	04E
Pts. NE, Pts. NENW, Pts. W2SW, Pts. SESW, Pts. N2SE		12	41N	04E
Pts. NENW		13	41N	04E
Pts. NWNE, Pts. NENW		14	41N	04E
Pts. SW		26	41N	04E
Pts. NESE, Pts. S2SE		27	41N	04E
Pts. NESE		33	41N	04E
Pts. Govt. Lots 3-4, Pts. NE, Pts. NWSW, Pts. N2SE		34	41N	04E
Pts. NWNW, Pts. SWNW		35	41N	04E



# IDAHO DEPARTMENT OF LANDS FISCAL YEAR 2024 TIMBER SALE PLAN

July 1, 2023 - June 30, 2024

## St. Joe Supervisory Area

Sale Name:

### Syringa Spots

Estimated Auction: Summer 2023

Location: 6 Miles S. of St. Maries

Drainages: Syringa Cr.

Class I Streams: No

Class II Streams: Yes

Silvicultural Prescription: Clearcut, Shelterwood

Harvest System: Ground Based, Cable

APPROXIMATE

ACREAGE:  
366 acres

VOLUME:  
12,200 MBF

### Timber Sale Legal Description

Subsection	Section	Township	Range
Pts. Govt. Lots 1-4, Pts. E2NW	18	45N	01W
Pts. SESE	12	45N	02W
Pts. E2NE, Pts. W2, Pts. SE	13	45N	02W

## Supervisory Area Totals: St. Joe

Additional Small Volume Sales: 105 MBF  
Supervisory Area Acres: 2,960 acres  
Supervisory Area Total Sawlog: 80,000 MBF  
Supervisory Area Total Cedar Poles: 3,565 Cedar Poles

# IDAHO DEPARTMENT OF LANDS FISCAL YEAR 2024 TIMBER SALE PLAN

July 1, 2023 - June 30, 2024

## Clearwater Supervisory Area

Sale Name:

### 13 Mile II

Estimated Auction: Fall 2023

Location: 10 Miles Northeast of Orofino, ID

Drainages: Whiskey Cr.

Class I Streams: Yes

Class II Streams: Yes

Silvicultural Prescription: Clearcut, Overstory Removal

Harvest System: Ground based, Cable Yarding

APPROXIMATE

ACREAGE:  
220 acres

VOLUME:  
5,400 MBF

### Timber Sale Legal Description

Subsection	Section	Township	Range
Pts. NWNW	15	37N	3E
Pts. NE, Pts. SW, Pts. N2SE, Pts. SESE	16	37N	3E
Pts. N2SE, Pts. SESE	17	37N	3E
Pts. N2NE, Pts. SENE	21	37N	3E
Pts. N2NW, Pts. SWNW	22	37N	3E

Sale Name:

### Benton East Salvage

Estimated Auction: Spring 2024

Location: Benton Butte

Drainages: Benton Creek

Class I Streams: No

Class II Streams: No

Silvicultural Prescription: Clearcut

Harvest System: Salvage. Ground based, cable yarding, prescriptive.

APPROXIMATE

ACREAGE:  
250 acres

VOLUME:  
7,800 MBF

### Timber Sale Legal Description

Subsection	Section	Township	Range
Pts. S2N2, Pts. N2SW, Pts. SE	35	41N	05E

# IDAHO DEPARTMENT OF LANDS FISCAL YEAR 2024 TIMBER SALE PLAN

July 1, 2023 - June 30, 2024

## Clearwater Supervisory Area

Sale Name:

### Canyon Divide

Estimated Auction: Summer 2023

Location: 9 mi NE from Orofino

Drainages: Canyon Creek

Class I Streams: No

Class II Streams: Yes

Silvicultural Prescription: Clearcut, Seedtree

Harvest System: Ground Based

APPROXIMATE

ACREAGE:  
238 acres

VOLUME:  
5,501 MBF

### Timber Sale Legal Description

Subsection	Section	Township	Range
Pts. SESE	07	037N	003E
Pts. S2	08	037N	003E
Pts. S2NW, Pts. N2SW	09	037N	003E

Sale Name:

### Cougar Track

Estimated Auction: Fall 2023

Location: 7 miles NW of Headquarters, ID

Drainages: Cougar Creek

Class I Streams: Yes

Class II Streams: Yes

Silvicultural Prescription: Seedtree

Harvest System: prescriptive

APPROXIMATE

ACREAGE:  
210 acres

VOLUME:  
6,060 MBF

### Timber Sale Legal Description

Subsection	Section	Township	Range
Pts. S2N2, Pts. SW, Pts. N2SE	16	39N	05E
Pts. SENE, Pts. NESE, Pts. S2SE	17	39N	05E

Sale Name:

### Lakefront Yard

Estimated Auction: Winter 2024

Location: 9 mi northwest of Headquarters, ID

Drainages: Dworshak Reservoir - North Fork Clearwater River

Class I Streams: No

Class II Streams: Yes

Silvicultural Prescription: Clearcut

Harvest System: Ground based, cable yarding.

APPROXIMATE

ACREAGE:  
106 acres

VOLUME:  
4,680 MBF

### Timber Sale Legal Description

Subsection	Section	Township	Range
Pts. E2NE, Pts. NESW, Pts. SE	32	39N	4E
Pts. NWNW	33	39N	4E

# IDAHO DEPARTMENT OF LANDS FISCAL YEAR 2024 TIMBER SALE PLAN

July 1, 2023 - June 30, 2024

## Clearwater Supervisory Area

Sale Name:

### Lower Slocum

Estimated Auction: Summer 2023

Location: 12 mi NE from Orofino

Drainages: Whiskey Creek

Class I Streams: No

Class II Streams: Yes

Silvicultural Prescription: Clearcut, ROW, Seedtree

Harvest System: Ground based and cable yarding

APPROXIMATE

ACREAGE:  
163 acres

VOLUME:  
4,896 MBF

### Timber Sale Legal Description

Subsection	Section	Township	Range
Pts. SESE	02	037N	003E
Pts. S2SE	03	037N	003E
Pts. NE	10	037N	003E
Pts. NENE, Pts. S2NE, Pts. SENW	11	037N	003E

Sale Name:

### Snake Farm

Estimated Auction: Winter 2024

Location: 6 miles west of Headquarters, ID

Drainages: Snake Creek

Class I Streams: No

Class II Streams: Yes

Silvicultural Prescription: Clearcut, Overstory Removal, Seedtree

Harvest System: Ground Based, Cable yarding

APPROXIMATE

ACREAGE:  
413 acres

VOLUME:  
8,962 MBF

### Timber Sale Legal Description

Subsection	Section	Township	Range
Pts. NE, Pts. N2SWNW, Pts. SENW	24	038N	004E
Pts. Govt. Lots 1-2 & 4, Pts. SESW	19	038N	005E
Pts. SWNW, Pts. W2SW, Pts. SESW	29	038N	005E
Pts. Govt. Lots 1, Pts. W2NE, Pts. SENE, Pts. E2NW, Pts. N2SE, Pts. SESE	30	038N	005E
Pts. E2NE	31	038N	005E
Pts. W2NW	32	038N	005E

# IDAHO DEPARTMENT OF LANDS FISCAL YEAR 2024 TIMBER SALE PLAN

July 1, 2023 - June 30, 2024

## Clearwater Supervisory Area

Sale Name:

### Upper Reeds Creek

Estimated Auction: Spring 2024  
Location: 1 mile S of Headquarters, ID  
Drainages: Reeds Creek  
Class I Streams: No  
Class II Streams: Yes  
Silvicultural Prescription: Clearcut  
Harvest System: Prescriptive

APPROXIMATE

ACREAGE:  
206 acres

VOLUME:  
7,005 MBF

### Timber Sale Legal Description

Subsection	Section	Township	Range
Pts. E2NE, Pts. SWNE, Pts. SE	36	38N	5E
Pts. Govt. Lots 3 & 4, Pts. E2SW	30	38N	6E
Pts. Govt. Lots 1 & 2, Pts. NENW	31	38N	6E

Sale Name:

### West Y Cedar

Estimated Auction: Summer 2023  
Location: 12 miles North of Orofino, Idaho  
Drainages: Dworshak Reservoir  
Class I Streams: No  
Class II Streams: Yes  
Silvicultural Prescription: Clearcut, Seedtree  
Harvest System: Ground based

APPROXIMATE

ACREAGE:  
170 acres

VOLUME:  
4,722 MBF  
1,000 Poles

### Timber Sale Legal Description

Subsection	Section	Township	Range
Pts. S2NE, Pts. E2SW, Pts. SE	10	38N	02E
Pts. SWNW, Pts. W2SW	11	38N	02E

## Supervisory Area Totals: Clearwater

Supervisory Area Acres: 1,976 acres  
Supervisory Area Total Sawlog: 55,026 MBF  
Supervisory Area Total Cedar Poles: 1,000 Cedar Poles

# IDAHO DEPARTMENT OF LANDS FISCAL YEAR 2024 TIMBER SALE PLAN

July 1, 2023 - June 30, 2024

## Ponderosa Supervisory Area

Sale Name:

### A Cedar

Estimated Auction: Fall 2023  
Location: 11 miles northeast of Southwick, ID  
Drainages: Long Meadow Creek  
Class I Streams: No  
Class II Streams: Yes  
Silvicultural Prescription: Overstory Removal  
Harvest System: Cable and ground-based harvest systems

APPROXIMATE

ACREAGE:  
158 acres

VOLUME:  
1,430 MBF  
2,840 Poles

Subsection	Timber Sale Legal Description	Section	Township	Range
Pts. SENE; Pts. E2SW; Pts. SE		25	39N	01E
Pts. Govt. Lots 2-4		30	39N	02E

Sale Name:

### Benedict Cedar

Estimated Auction: Summer 2023  
Location: 12 miles northeast of Elk River, ID  
Drainages: Isabella Creek, Stony Creek, Breakfast Creek  
Class I Streams: Yes  
Class II Streams: Yes  
Silvicultural Prescription: Single Tree Select  
Harvest System: Helicopter

APPROXIMATE

ACREAGE:  
609 acres

VOLUME:  
10,500 MBF  
12,360 Poles

Subsection	Timber Sale Legal Description	Section	Township	Range
Pts. Govt. Lot 4, Pts. SESW, Pts. S2SE		07	41N	04E
Pts. E2SW, Pts. W2SE, Pts. SESE		08	41N	04E
Pts. SWSW		09	41N	04E
Pts. W2W2		16	41N	04E
Pts. N2, Pts. E2SW, Pts. SE		17	41N	04E
Pts. Govt. Lot 1, Pts. N2NE, Pts. NENW		18	41N	04E
Pts. N2, Pts. N2SW, Pts. SESW, Pts. N2SE		20	41N	04E
Pts. SWNW, Pts. NWSW		21	41N	04E

# IDAHO DEPARTMENT OF LANDS FISCAL YEAR 2024 TIMBER SALE PLAN

July 1, 2023 - June 30, 2024

## Ponderosa Supervisory Area

Sale Name:

### **Bovill Scatter**

Estimated Auction: Summer 2023  
Location: 3 miles south of Bovill, Id  
Drainages: Ruby Creek  
Class I Streams: No  
Class II Streams: Yes  
Silvicultural Prescription: Clearcut, Overstory Removal  
Harvest System: Cable and Ground-Based

APPROXIMATE

ACREAGE:  
440 acres

VOLUME:  
6,575 MBF

### Timber Sale Legal Description

Subsection	Section	Township	Range
Pts. S2NE, Pts. N2SE	7	40N	01 E
Pts. N2NW	16	40N	01E
Pts. NE, Pts. SENW, Pts. NESW, Pts. NWSE	17	40N	01E
Pts. NWNE, Pts. S2NE, Pts. NW, Pts. N2SW, Pts. SESW, Pts. SE	8	40N	01E
Pts. S2SW	9	40N	01E

Sale Name:

### **JR Vassar**

Estimated Auction: Fall 2023  
Location: 2 miles west of Bovill, ID  
Drainages: Hog Meadow Creek  
Class I Streams: No  
Class II Streams: Yes  
Silvicultural Prescription: Clearcut, Overstory Removal  
Harvest System: Ground-based Harvest Systems

APPROXIMATE

ACREAGE:  
179 acres

VOLUME:  
3,660 MBF

### Timber Sale Legal Description

Subsection	Section	Township	Range
Pts. Govt. Lots 6&7, Pts. E2SW	34	41N	01W
Pts. SWNE, Pts. W2NW, Pts. SENW, Pts. N2SW, Pts. SWSW, Pts. NWSE	35	41N	01W

# IDAHO DEPARTMENT OF LANDS FISCAL YEAR 2024 TIMBER SALE PLAN

July 1, 2023 - June 30, 2024

## Ponderosa Supervisory Area

Sale Name:

### Silver Spur

Estimated Auction: Fall 2023

Location: 11 miles northeast of Southwick, ID

Drainages: Long Meadow Creek, Elk Creek

Class I Streams: No

Class II Streams: Yes

Silvicultural Prescription: Clearcut, Overstory Removal

Harvest System: Cable and ground-based harvest systems

APPROXIMATE

ACREAGE:  
368 acres

VOLUME:  
7,205 MBF

### Timber Sale Legal Description

Subsection	Section	Township	Range
Pts. SWNE, Pts. S2NW, Pts. SW, Pts. NWSE	23	39N	01E
Pts. SESE	24	39N	01E
Pts. NENE, SWNE, Pts. SENW, Pts. NESW, Pts. NWSE	25	39N	01E
Pts. Gov Lot 4	19	39N	02E
Pts. Gov Lot 1	30	39N	02E
Pts. Gov Lots 3-4, Pts. NE, Pts. E2NW, Pts. E2SW, Pts. N2SE, Pts. SWSE	31	39N	02E
Pts. SWNW, Pts. NWSW	32	39N	02E

Sale Name:

### Swamp Witch

Estimated Auction: Spring 2024

Location: 7 miles southeast of Elk River, ID

Drainages: Pick and Pan Ck, Swamp Ck

Class I Streams: No

Class II Streams: Yes

Silvicultural Prescription: Clearcut, Overstory Removal

Harvest System: Cable and Ground-based

APPROXIMATE

ACREAGE:  
138 acres

VOLUME:  
5,560 MBF

### Timber Sale Legal Description

Subsection	Section	Township	Range
Pts. SESE	21	39N	03E
Pts. S2SW, Pts. SWSE	22	39N	03E
Pts. N2NW, Pts. SWNW, Pts. NWSW	27	39N	03E
Pts. NENE	28	39N	03E



# IDAHO DEPARTMENT OF LANDS FISCAL YEAR 2024 TIMBER SALE PLAN

July 1, 2023 - June 30, 2024

## Ponderosa Supervisory Area

Sale Name:

**Y Schwartz Cedar**

Estimated Auction: Winter 2024

Location: 4 miles northwest of Deary, ID

Drainages: Schwartz Creek

Class I Streams: Yes

Class II Streams: Yes

Silvicultural Prescription: Clearcut

Harvest System: Cable and ground-based harvest systems

APPROXIMATE

ACREAGE:  
128 acres

VOLUME:  
4,905 MBF  
1,230 Poles

Timber Sale Legal Description				
Subsection		Section	Township	Range
Pts. NW, Pts. NWSW		27	041N	02W
Pts. NENE, Pts. S2NE, Pts. SWNW, Pts. NWSW, Pts. N2SE		28	041N	02W
Pts. S2NE, Pts. N2SE, Pts. SESE		29	041N	02W
Pts. E2NE		32	041N	02W
Pts. W2NW		33	041N	02W

## Supervisory Area Totals: Ponderosa

Additional Small Volume Sales: 165 MBF

Supervisory Area Acres: 2,020 acres

Supervisory Area Total Sawlog: 40,000 MBF

Supervisory Area Total Cedar Poles: 16,430 Cedar Poles

# IDAHO DEPARTMENT OF LANDS FISCAL YEAR 2024 TIMBER SALE PLAN

July 1, 2023 - June 30, 2024

## Maggie Creek Supervisory Area

Sale Name:

### Brown Back Mountain

Estimated Auction: Fall 2023

Location: 7 Miles SE of Weippe, Idaho

Drainages: Blonde Creek, Trout Creek, Pete & Charlie Creek

Class I Streams: Yes

Class II Streams: Yes

Silvicultural Prescription: Shelterwood

Harvest System: Ground Based & Cable Yarding

APPROXIMATE

ACREAGE:  
445 acres

VOLUME:  
8,000 MBF

### Timber Sale Legal Description

Subsection	Section	Township	Range
Pts. Govt. Lots 3, 4, Pts. SWNE, Pts. SENW, Pts. NESW, Pts. S2SW, SWNW, NWSW	02	34N	05E
Govt. Lot 1, Pts. Gov Lot 2, Pts. SENE, Pts. E2SE	03	34N	05E
Pts. N2NE	10	34N	05E
Pts. NWNW	11	34N	05E
NESE, Pts. SESW, Pts. NWSE, Pts. S2SE	34	35N	05E
Pts. NWSW	35	35N	05E

Sale Name:

### Cottonwood Heights

Estimated Auction: Winter 2024

Location: 5 Miles S of Weippe, Idaho

Drainages: Lolo Creek

Class I Streams: No

Class II Streams: No

Silvicultural Prescription: Seedtree, Single Tree Select

Harvest System: Ground Based

APPROXIMATE

ACREAGE:  
175 acres

VOLUME:  
1,230 MBF

### Timber Sale Legal Description

Subsection	Section	Township	Range
Pts. S2NE, Pts. S2	11	34N	04E

Sale Name:

### Found In Space

Estimated Auction: Summer 2023

Location: 4 Miles NE of Weippe, Idaho

Drainages: Grassshopper Creek

Class I Streams: No

Class II Streams: Yes

Silvicultural Prescription: Shelterwood

Harvest System: Ground Based

APPROXIMATE

ACREAGE:  
230 acres

VOLUME:  
5,415 MBF

### Timber Sale Legal Description

Subsection	Section	Township	Range
Pts.	31, 32	36N	05E

# IDAHO DEPARTMENT OF LANDS FISCAL YEAR 2024 TIMBER SALE PLAN

July 1, 2023 - June 30, 2024

## Maggie Creek Supervisory Area

Sale Name:

### Lovin Lacey Cedar

Estimated Auction: Winter 2024  
Location: 7 Miles SE of Weippe, Idaho  
Drainages: Miles Creek  
Class I Streams: No  
Class II Streams: Yes  
Silvicultural Prescription: Shelterwood  
Harvest System: Ground Based

APPROXIMATE

ACREAGE:  
322 acres

VOLUME:  
5,000 MBF

### Timber Sale Legal Description

Subsection	Section	Township	Range
Pts.	9	34N	04E
Pts. SENE, Pts. NESE	8	34N	05E

Sale Name:

### Model T Coulee

Estimated Auction: Winter 2024  
Location: 2 Miles NW of Weippe, Idaho  
Drainages: Jim Ford Creek  
Class I Streams: Yes  
Class II Streams: Yes  
Silvicultural Prescription: Clearcut, Overstory Removal, Seedtree, Shelterwood  
Harvest System: Ground Based & Cable Yarding

APPROXIMATE

ACREAGE:  
720 acres

VOLUME:  
5,430 MBF

### Timber Sale Legal Description

Subsection	Section	Township	Range
Pts.	3, 4, 5, 6,	35N	04E

Sale Name:

### School Section OSR Cedar

Estimated Auction: Summer 2023  
Location: 6 Miles E of Kamiah, Idaho  
Drainages: Maggie Creek, Tom Taha Creek  
Class I Streams: No  
Class II Streams: Yes  
Silvicultural Prescription: Clearcut, Overstory Removal  
Harvest System: Ground Based

APPROXIMATE

ACREAGE:  
287 acres

VOLUME:  
3,425 MBF

### Timber Sale Legal Description

Subsection	Section	Township	Range
	36	34N	04E

IDAHO DEPARTMENT OF LANDS FISCAL YEAR 2024 TIMBER SALE PLAN

July 1, 2023 - June 30, 2024

**Maggie Creek  
Supervisory Area**

Sale Name:

**Sill Creek Entirety**

Estimated Auction: Spring 2024

Location: 2 Miles SE of Clearwater, Idaho

Drainages: Sill Creek

Class I Streams: No

Class II Streams: Yes

Silvicultural Prescription: Shelterwood

Harvest System: Ground Based & Cable Yarding

APPROXIMATE

ACREAGE:  
201 acres

VOLUME:  
3,015 MBF

Timber Sale Legal Description

Subsection	Section	Township	Range
Pts. SWNE, Pts. NW, Pts. E2SW, Pts. W2SE, Pts. SESE	29	31N	05E

**Supervisory Area Totals: Maggie Creek**

Supervisory Area Acres: 2,380 acres  
Supervisory Area Total Sawlog: 31,515 MBF

# IDAHO DEPARTMENT OF LANDS FISCAL YEAR 2024 TIMBER SALE PLAN

July 1, 2023 - June 30, 2024

## Payette Lakes Supervisory Area

Sale Name:

### Dry Sky Ton

Estimated Auction: Summer 2023

Location: 10 miles NW of Council, ID

Drainages: Olive, Dry, and Fir Creek

Class I Streams: No

Class II Streams: Yes

Silvicultural Prescription: Clearcut, Overstory Removal, Seedtree, Shelterwood, Single Tree Select

Harvest System: Ground based and cable

APPROXIMATE

ACREAGE:  
606 acres

VOLUME:  
6,482 MBF  
36,688 Tons

### Timber Sale Legal Description

Subsection	Section	Township	Range
Pts. NWNW, Pts. SWSW	16	17N	2W
Pts. NENW, Pts. Govt. Lots 1&2, Pts. SENW, Pts. NESW, Pts. Govt. Lot 3	18	17N	2W
Pts. Govt. Lot 1, Pts. W2NE, Pts. SENE	20	17N	2W
Pts. SESW, Pts. SWSE, Pts. Govt. Lot 10	6	17N	2W
Pts. Govt. Lot 1, Pts. W2NE, Pts. NENW, Pts. Govt. Lots 2&3, Pts. SENW, Pts. NESW	7	17N	2W
Pts. Govt. Lots 4&5, Pts. SESW, Pts. E2SE	7	17N	2W
Pts. W2SW	8	17N	2W
Pts. NENE	13	17N	3W
Pts. Govt. Lots 1,3,4, Pts. W2NE, Pts. W2, Pts. W2SE,	17	7N	2W

Sale Name:

### JP North Ton

Estimated Auction: Summer 2023

Location: 6 miles NW of New Meadows, ID

Drainages: Weiser River

Class I Streams: No

Class II Streams: Yes

Silvicultural Prescription: Overstory Removal, Seedtree

Harvest System: Ground based

APPROXIMATE

ACREAGE:  
323 acres

VOLUME:  
1,840 MBF  
10,414 Tons

### Timber Sale Legal Description

Subsection	Section	Township	Range
Pts. W2NE, Pts. W2, Pts. NWSE	36	20N	1E

# IDAHO DEPARTMENT OF LANDS FISCAL YEAR 2024 TIMBER SALE PLAN

July 1, 2023 - June 30, 2024

## Payette Lakes Supervisory Area

Sale Name:

### Meadow Handle Ton

Estimated Auction: Fall 2023

Location: 7.6 Miles SE McCall

Drainages: Jug Creek

Class I Streams: No

Class II Streams: Yes

Silvicultural Prescription: Clearcut, Seedtree

Harvest System: Skyline, Tractor

APPROXIMATE

ACREAGE:  
559 acres

VOLUME:  
7,805 MBF  
44,177 Tons

### Timber Sale Legal Description

Subsection	Section	Township	Range
Pts. NWNE, Pts. NW, Pts. N2SW, Pts. SESW, Pts. W2SE	16	17N	4E
Pts. NENE	17	17N	4E
Pts. S2NE, Pts. SENW, Pts. NESW, Pts. S2SW, Pts. E2SE	4	17N	4E
S2SE	5	17N	4E
Pts. E2	8	17N	4E
Pts.	9	17N	4E

Sale Name:

### Warm Mosquito Ton

Estimated Auction: Spring 2024

Location: 8 miles W of New Meadows, ID

Drainages: Weiser

Class I Streams: No

Class II Streams: Yes

Silvicultural Prescription: Shelterwood

Harvest System: Ground based

APPROXIMATE

ACREAGE:  
515 acres

VOLUME:  
4,695 MBF  
26,573 Tons

### Timber Sale Legal Description

Subsection	Section	Township	Range
Pts. SWNE, Pts. Govt. Lots 3&4, Pts. S2NW, Pts. SW, Pts. N2SE, Pts. SWSE	2	18N	1W
Pts. S2NE, Pts. N2SE	16	19N	01W
Pts. NE, Pts. S2NW, Pts. N2SW, Pts. SESW, Pts. SE	15	19N	1W

## Supervisory Area Totals: Payette Lakes

Additional Small Volume Sales: 178 MBF

Supervisory Area Acres: 2,003 acres

Supervisory Area Total Sawlog: 21,000 MBF

Supervisory Area Total Sawlog (Ton): 117,852 Tons

# IDAHO DEPARTMENT OF LANDS FISCAL YEAR 2024 TIMBER SALE PLAN

July 1, 2023 - June 30, 2024

## Southwest Supervisory Area

Sale Name:

### Murray Scriver

Estimated Auction: Summer 2023  
Location: 5 miles SE of Smiths Ferry, ID  
Drainages: South Fork Murray Creek  
Class I Streams: No  
Class II Streams: Yes  
Silvicultural Prescription: Clearcut  
Harvest System: Tractor/Jammer

APPROXIMATE

ACREAGE:  
306 acres

VOLUME:  
4,345 MBF

### Timber Sale Legal Description

Subsection	Section	Township	Range
Pts.	1, 2, 11, 12	10N	03E
Pts.	36	11N	03E

Sale Name:

### Upper Shirts

Estimated Auction: Spring 2024  
Location: 5 miles NW of Banks, ID  
Drainages: Shirts Creek  
Class I Streams: No  
Class II Streams: Yes  
Silvicultural Prescription: Clearcut, Single Tree Select  
Harvest System: Tractor/Jammer

APPROXIMATE

ACREAGE:  
779 acres

VOLUME:  
7,070 MBF

### Timber Sale Legal Description

Subsection	Section	Township	Range
Pts.	2, 3, 4, 9,	09N	02E

IDAHO DEPARTMENT OF LANDS FISCAL YEAR 2024 TIMBER SALE PLAN

July 1, 2023 - June 30, 2024

Southwest  
Supervisory Area

Sale Name:

**Wild Howell**

Estimated Auction: Summer 2023  
Location: 5 miles NW of Crouch, ID  
Drainages: Howell Creek  
Class I Streams: No  
Class II Streams: Yes  
Silvicultural Prescription: Clearcut  
Harvest System: Tractor/Jammer

APPROXIMATE

ACREAGE:  
427 acres

VOLUME:  
4,590 MBF

Timber Sale Legal Description				
Subsection		Section	Township	Range
Pts.		1, 2, 3, 4	09N	03E
Pts.		28, 33, 34,	10N	03E

Supervisory Area Totals: Southwest

Supervisory Area Acres: 1,512 acres  
Supervisory Area Total Sawlog: 16,005 MBF



# IDAHO DEPARTMENT OF LANDS FISCAL YEAR 2024 TIMBER SALE PLAN

July 1, 2023 - June 30, 2024

## Eastern Idaho Supervisory Area

Sale Name:

**Frenchys Hollow Ton**

Estimated Auction: Spring 2024

Location: 20 miles east of Downey, ID

Drainages: Walker Gulch

Class I Streams: Yes

Class II Streams: Yes

Silvicultural Prescription: Overstory Removal

Harvest System: Ground Based

APPROXIMATE

ACREAGE:  
700 acres

VOLUME:  
5,000 MBF  
32,500 Tons

Subsection	Timber Sale Legal Description	Section	Township	Range
Pts. SESE		35	10S	38E
Pts.		36	10S	38E
Pts. E2		11	11S	38E
Pts.		13	11S	38E
Pts. NENE		14	11S	38E
Pts.		2	11S	38E
Pts.		17	11S	39E
Pts. S2N2, Pts. S2		18	11S	39E
Pts.		19	11S	39E
Pts.		20	11S	39E
Pts.		29	11S	39E

### Supervisory Area Totals: Eastern Idaho

Supervisory Area Acres: 700 acres  
Supervisory Area Total Sawlog: 5,000 MBF  
Supervisory Area Total Sawlog (Ton): 32,500 Tons

### Statewide Totals

Grand Total Acres: 21,332 acres  
Grand Total Sawlog: 331,111 MBF  
Grand Total Sawlog (Ton): 150,352 Tons  
Grand Total Cedar Poles: 24,695 Cedar Poles