



IDAHO DEPARTMENT OF LANDS
Coeur d'Alene, Idaho

Signed this 25th day of July, 2023

NOTICE OF RESTRICTIONS

Whereas, Critical Fire Danger exists within parts of Idaho, herein after described;

NOW THEREFORE, under the authority vested in me under Section 38-115, Idaho Code, and the Rules Pertaining to Forest Fire Protection, I hereby direct the following Stage I Fire Restriction measures to apply to all state and private managed lands in the following areas outside of incorporated city limits as described below:

Central Idaho Dispatch Area/ Fire Restrictions Area:

The **Central Idaho Fire Restrictions Area** encompasses those portions of Custer County that are north and east of the Sawtooth National Recreation Area (excluding the Frank Church River of No Return Wilderness) and the portion of Lemhi County that is not federal land designated as wilderness.

Stage 1 fire restrictions apply to campfires and smoking. Under Stage 1 restrictions, the following acts are prohibited:

1. Building, maintaining, attending, or using a fire, campfire, or stove fire except within a designated recreation site, or on their own land, and only within an owner-provided fire structure (see definition).
2. Smoking, except within an enclosed vehicle, building, or designated recreation site, or while stopped in an area at least three feet in diameter that is barren or cleared of all flammable materials.

Exceptions to the above Stage 1 prohibitions include the following:

1. Persons with a written permit that specifically authorizes the otherwise prohibited act.
2. Persons using a fire solely fueled by liquid petroleum or LPG fuels. Such devices, including propane campfires, may be used only in an area cleared of flammable material. Persons using a stove fire (defined in the order)
3. Persons using stove fires with a chimney of at least five (5) feet in length and employing a spark arrester with a maximum mesh screen opening of ¼ inch.
4. Persons using metal fire pans (see definition) within ¼ mile of:
 - a. The Salmon River from the Corn Creek launch site to Vinegar Creek.
 - b. The Middle Fork of the Salmon River.
 - c. The Selway River from the Paradise boat launch to Race Creek.
 - d. The Snake River from Hells Canyon Dam to the City of Lewiston.
 - e. Salmon River from Vinegar Creek to its mouth at the Snake River below the mean high-water mark.
 - f. South Fork of the Snake River from Palisades Dam to Mike Walker Boat Access.
 - g. Henry's Fork of the Snake River from St. Anthony to Mike Walker Boat Access.

Fire Pan and Ash Removal: An approved fire pan is a durable, metal pan at least 12-inches x 12-inches wide, with at least a 3-inch lip around its outer edge and sufficient to contain a fire and its remains. Visitors must elevate fire pans off the ground to prevent scorching of the soil. If the fire pan does not have legs to elevate it, rocks must be placed underneath the corners of the fire pan. All ash must be removed and carried out of the river corridor in a sealed container or durable bag.

5. Private landowners using charcoal (disposed of properly) or propane barbecues on their own property.
6. Persons conducting activities in those designated areas where the activity is specifically authorized by written posted notice.
7. Any federal, state, or local officer or member of an organized rescue or firefighting force, in the performance of an official duty.

Under these restrictions, campfires are allowed only in designated recreation sites within metal/concrete fire pits. The restrictions will remain in effect until there is a significant change in fire danger.

For additional information on fire restrictions, visit the fire restrictions website at <https://www.idl.idaho.gov/fire-management/fire-restrictions-finder/>

For additional information on restrictions in a specific area, please contact the local land management office.

An exemption does not absolve an individual or organization from liability or responsibility for any fire started by the exempted activity.

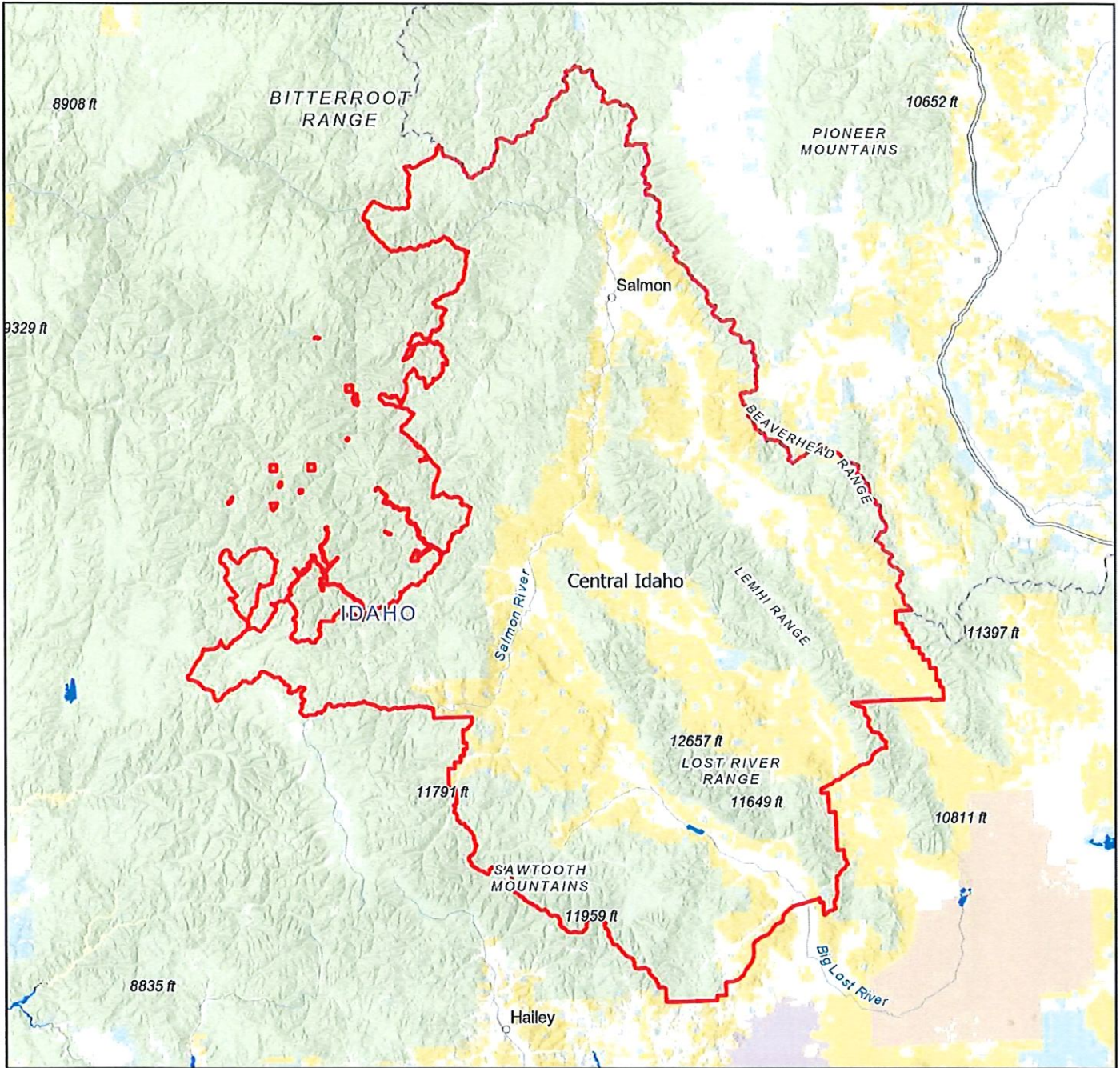
These restrictions shall be in full force and effect from 0001 hours, Friday, July 28, 2023 until this order is otherwise rescinded.



Craig Foss, State Forester
Idaho Department of Land

Central Idaho

Fire Restriction Areas



Date Created:
05/18/2022

The surface management status should be used as a general guide only. Official lands records at the Bureau of Land Management (BLM) and other State and County offices should be checked for up-to-date information regarding any specific tract of lands.

No warranty is made by the Idaho Department of Lands (IDL) as to the accuracy, reliability, or completeness of these datasets for individual use or aggregation with other datasets.

Spatial Reference
Name: WGS 1984 Web Mercator Auxiliary Sphere

