

FISCAL YEAR 2025 PROPOSED TIMBER SALES PLAN



IDAHO DEPARTMENT OF LANDS FY24 TIMBER SALE PLAN

July 1, 2024 – June 30, 2025

TABLE OF CONTENTS

Types of Sales	3
Supervisory Area Offices	4-5
Administrative Rules and Timber Sale Financing & Purchasing	6
Priest Lake.....	8-12
Pend Oreille Lake	13-16
Mica.....	17-18
St. Joe	19-24
Clearwater	25-31
Ponderosa	32-34
Maggie Creek	35-37
Payette Lakes.....	38-41
Southwestern Idaho.....	42
Eastern Idaho	43

IDAHO DEPARTMENT OF LANDS FY24 TIMBER SALE PLAN

July 1, 2024 – June 30, 2025

[Types of Sales](#)

Timber Sales

Timber sales contain an estimated volume of at least 1,000 MBF and exceed the net appraised stumpage value for salvage sales established by the state board of land commissioners. Timber sales are designed to produce maximum stumpage returns to the endowment funds consistent with prudent long-term management practices.

Timber sales are advertised for four weeks in a newspaper in the county where the sale is located, and are sold at public auction.

Direct Sales

Direct Sale net appraised stumpage value does not exceed the maximum value established by the State Board of Land Commissioners. This type of sale is to be used to harvest isolated or by-passed parcels of timber of insufficient value and volume to justify a salvage sale. The direct sale is not used where two or more potential purchasers may be interested in bidding on the forest products offered for sale.

The direct sale of forest product stumpage is made without advertisement as authorized by the Director.

IDAHO DEPARTMENT OF LANDS FY24 TIMBER SALE PLAN

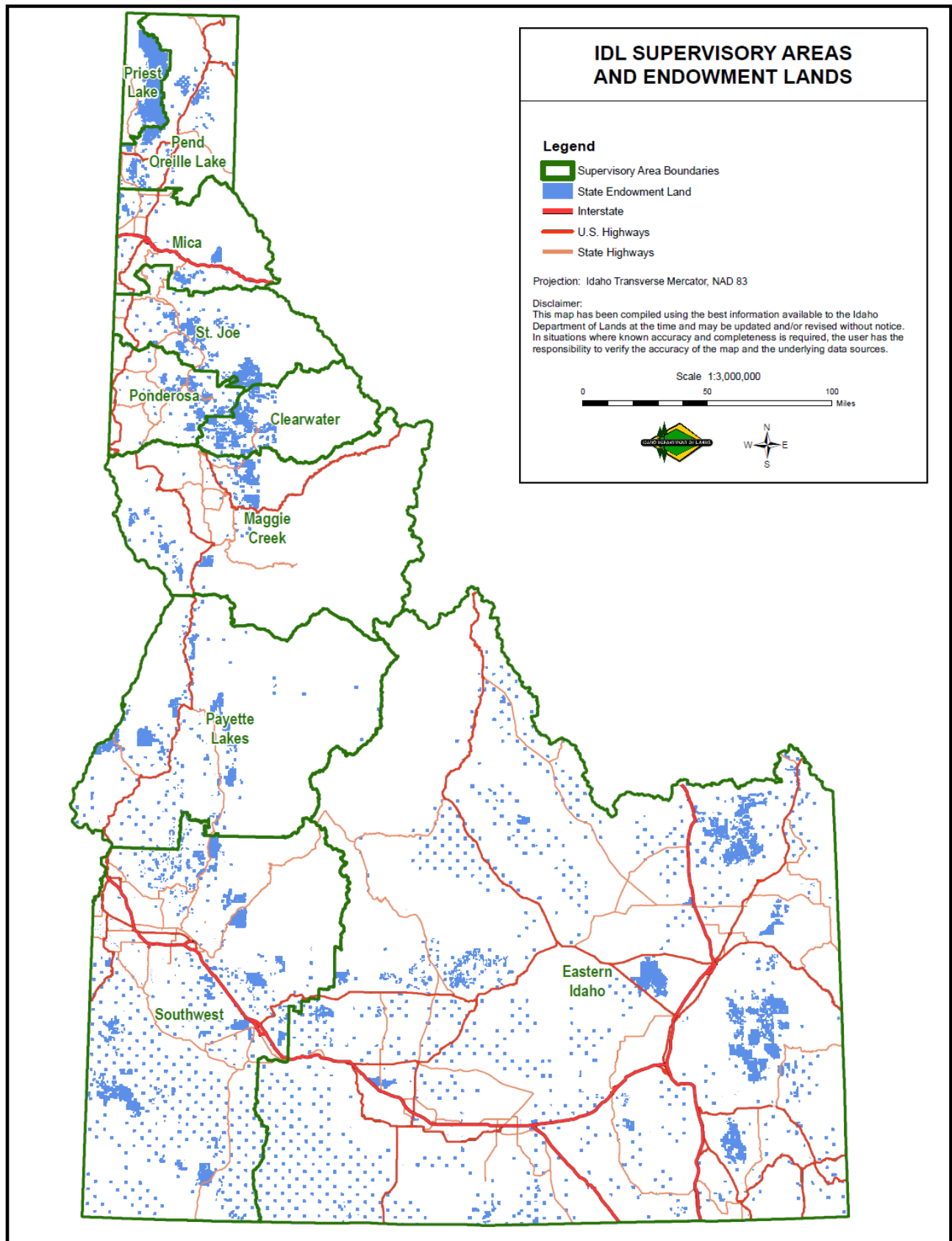
July 1, 2024 – June 30, 2025

[Supervisory Area Offices](#)

SUPERVISORY AREA	AREA SUPERVISOR	PHONE
Priest Lake 4053 Cavanaugh Bay Road Coolin, ID 83821	Dan Brown	(208) 443-2516
Pend Oreille Lake 2550 Highway 2 West Sandpoint, ID 83864	Erik Sjoquist	(208) 263-5104
Mica 3706 Industrial Avenue S Coeur d'Alene, ID 83815	Andrew Smyth	(208) 769-1577
St. Joe 1806 Main Avenue St. Maries, ID 83861	Tony Brede	(208) 245-4551
Ponderosa 3130 Highway 3 Deary, ID 83823	Chris Tretter	(208) 877-1121
Clearwater 10230 Highway 12 Orofino, ID 83544	Jay Sila	(208) 476-4587
Maggie Creek 913 Third Street Kamiah ID 83536	Dave Schwartz	(208) 935-2141
Payette Lakes 555 Deinhard Lane McCall, ID 83638	Scott Corkill	(208) 634-7125
Southwest/South Central 8355 W. State Street Boise, ID 83703	Dean Johnson	(208) 334-3488
Eastern Idaho 3563 Ririe Highway Idaho Falls, ID 83401	Ryan Woodland	(208) 525-7167

IDAHO DEPARTMENT OF LANDS FY24 TIMBER SALE PLAN

July 1, 2024 – June 30, 2025



IDAHO DEPARTMENT OF LANDS FY24 TIMBER SALE PLAN

July 1, 2024 – June 30, 2025

Administrative Rules and Purchaser Sale Requirements

Links to detailed information on the internet are provided below.

Administrative Rules of the Department of Lands

[20.02.14 – Selling Forest Products on State-Owned Endowment Lands](#)

For information regarding timber sale procedures, bidding procedures, bonding requirements and insurance requirements, click on the link below.

[Purchaser Sale Requirements](#)

Idaho Department of Lands Fiscal Year 2025 Proposed Timber Sale Plan

This Fiscal Year 2025 Proposed Timber Sale Plan will be presented to the Idaho Board of Land Commissioners at the April 2024 Land Board meeting for approval.

All timber sales listed on the 2025 Proposed Timber Sale Plan have been available for public review on the Notice of Proposed Future Sales on the IDL timber sale website since May 2022.

Comments regarding this proposed plan will be accepted until March 31, 2024. Send comments, preferably via email, to:

Jeremy Shawver
Idaho Department of Lands
Section Manager Timber Sales/Contract Admin
Email address: jshawver@idl.idaho.gov
3284 W. Industrial Loop
Coeur d'Alene, ID 83815



IDAHO DEPARTMENT OF LANDS FISCAL YEAR 2025 TIMBER SALE PLAN

July 1, 2024 - June 30, 2025

Priest Lake Supervisory Area

Sale Name:

Bear Parts

Estimated Auction: Fall 2024

Location: 13 Miles North of Coolin, ID

Drainages: Bear Creek and Indian Creek

Class I Streams: No

Class II Streams: Yes

Silvicultural Prescription: Clearcut, Overstory Removal, Seedtree

Harvest System: Cable Yarding, Ground - Based

APPROXIMATE

ACREAGE:
1,003 acres

VOLUME:
4,000 MBF

Timber Sale Legal Description

Subsection	Section	Township	Range
Gov Lots 2, 3, Pts Gov Lots 1, Pts Gov Lots 1, 4, Pts S2NE, Pts SWNW, Pts NESW, Pts	01	061N	004W
Pts SENE, Pts E2SE	02	061N	004W
Pts NE, Pts NESE, Pts S2SE	11	061N	004W
Pts NWNW	12	061N	004W
Pts N2NE, Pts SWNE, Pts S2NW, Pts SW, Pts NWSE	14	061N	004W
Pts SESE	15	061N	004W
Pts NE	22	061N	004W
Pts NW	23	061N	004W
Pts Gov Lots 4, Pts Gov Lots 4, Pts SESW	30	062N	003W
Pts Gov Lots 1, 2, 3, 4, Pts Gov Lots 1, 2, 3, 4, Pts W2NE, Pts E2NW, Pts NESW	31	062N	003W
Pts SESE	25	062N	004W
Pts NENE, Pts SWNE, Pts S2NW, Pts N2SW, Pts SWSW, SENE, SESW, SE	36	062N	004W

Sale Name:

Boyd's Bugle

Estimated Auction: Spring 2025

Location: 25 Miles North of Coolin, ID

Drainages: Bugle Creek and Caribou Creek

Class I Streams: Yes

Class II Streams: Yes

Silvicultural Prescription: Clearcut, Seedtree

Harvest System: Cable Yarding, Ground - Based

APPROXIMATE

ACREAGE:
648 acres

VOLUME:
3,900 MBF

Timber Sale Legal Description

Subsection	Section	Township	Range
Pts SWSW	02	063N	004W
Pts E2SW, Pts SE	03	063N	004W
Pts NE, Pts E2NW	10	063N	004W
E2NE, E2SE, Pts SWNE, Pts W2NW, Pts N2SW, Pts SESW, Pts W2SE	11	063N	004W
NWSW, Pts SWNE, Pts NWNW, Pts S2NW, Pts NESW, Pts S2SW, Pts NWSE	12	063N	004W
Pts W2NW	13	063N	004W
NENE, Pts NWNE, Pts S2NE, Pts NENW	14	063N	004W

IDAHO DEPARTMENT OF LANDS FISCAL YEAR 2025 TIMBER SALE PLAN

July 1, 2024 - June 30, 2025

Priest Lake Supervisory Area

Sale Name:

Cedar Trap

Estimated Auction: Fall 2024
Location: 24 Miles North of Coolin, ID
Drainages: Trapper Creek
Class I Streams: Yes
Class II Streams: Yes
Silvicultural Prescription: Clearcut
Harvest System: Cable Yarding, Ground - Based

APPROXIMATE

ACREAGE:
115 acres

VOLUME:
2,000 MBF
1,500 Poles

Timber Sale Legal Description

Subsection	Section	Township	Range
Pts SE	04	063N	004W
Pts W2NE, Pts E2NW, Pts NESW, Pts W2SE	08	063N	004W
Pts N2NE, Pts E2SE	09	063N	004W
Pts W2SW	10	063N	004W

Sale Name:

Feline

Estimated Auction: Fall 2024
Location: 6 Miles Northeast of Coolin, ID
Drainages: Cougar Creek, Hunt Creek
Class I Streams: No
Class II Streams: Yes
Silvicultural Prescription: Overstory Removal, Seedtree
Harvest System: Cable Yarding, Ground - Based

APPROXIMATE

ACREAGE:
788 acres

VOLUME:
3,000 MBF

Timber Sale Legal Description

Subsection	Section	Township	Range
Pts Gov Lots 4	10	060N	004W
Pts Gov Lots 1, 2, Pts SENW, Pts E2SW, Pts SWSE	11	060N	004W
Pts W2NE, Pts N2NW, Pts SENW, Pts NWSW, SWNW	13	060N	004W
Pts Gov Lots 1, 2, 3, NE, N2NW, SENW, NESW, Pts SESW, Pts SE	14	060N	004W
Pts Gov Lots 1	15	060N	004W
Pts Gov Lots 1, 2, 3, 4, Pts E2NW, Pts NESW	23	060N	004W

IDAHO DEPARTMENT OF LANDS FISCAL YEAR 2025 TIMBER SALE PLAN

July 1, 2024 - June 30, 2025

Priest Lake Supervisory Area

Sale Name:

Hunt Cedar

Estimated Auction: Winter 2025
Location: 7 Miles Northeast of Coolin, ID
Drainages: Hunt Creek
Class I Streams: Yes
Class II Streams: Yes
Silvicultural Prescription: Clearcut, Seedtree
Harvest System: Cable Yarding, Ground - Based

APPROXIMATE

ACREAGE:
402 acres

VOLUME:
4,500 MBF
500 Poles

Timber Sale Legal Description

Subsection	Section	Township	Range
Pts Gov Lots 6, 7, E2SW, SWSE, Pts SWNE, Pts SENW, Pts N2SE, Pts SESE	06	060N	003W
Pts Gov Lots 1, Pts NE, Pts NENW	07	060N	003W
Pts E2SE, Pts E2SE	01	060N	004W
Pts W2NE, Pts NW, Pts NWSE	11	060N	004W
Pts NENE, Pts NENE	12	060N	004W

Sale Name:

Jack Frost

Estimated Auction: Spring 2025
Location: 4 Miles South of Coolin, ID
Drainages: Priest River
Class I Streams: No
Class II Streams: No
Silvicultural Prescription: Clearcut, Seedtree
Harvest System: Ground - Based

APPROXIMATE

ACREAGE:
535 acres

VOLUME:
3,600 MBF

Timber Sale Legal Description

Subsection	Section	Township	Range
Gov Lots 4, Pts Gov Lots 1, 2, 3, Pts S2NE, Pts S2NW, Pts SW, Pts SE	03	058N	004W
Pts Gov Lots 1, 2, Pts SENE, Pts E2SE	04	058N	004W
Pts S2SE	33	059N	004W
NESW, Pts W2NE, Pts NENW, Pts S2NW, Pts NWSW, Pts S2SW, Pts NWSE, Pts S2SE	34	059N	004W

IDAHO DEPARTMENT OF LANDS FISCAL YEAR 2025 TIMBER SALE PLAN

July 1, 2024 - June 30, 2025

Priest Lake Supervisory Area

Sale Name:

Jumpin Jack Flat

Estimated Auction: Summer 2024
Location: 6 Miles South of Coolin, ID
Drainages: Priest River
Class I Streams: No
Class II Streams: Yes
Silvicultural Prescription: Seedtree
Harvest System: Ground - Based

APPROXIMATE

ACREAGE:
685 acres

VOLUME:
4,000 MBF

Timber Sale Legal Description

Subsection	Section	Township	Range
Pts S2SW, Pts S2SE	03	058N	004W
Pts SESE	04	058N	004W
Pts E2NE, Pts NESE	09	058N	004W
NWSW, Pts NE, Pts NW, Pts NESW, Pts S2SW, Pts SE	10	058N	004W
Pts SW	11	058N	004W
Pts W2NW, Pts NWSW	14	058N	004W
Pts NE, Pts NW, Pts NESW, Pts N2SE	15	058N	004W

IDAHO DEPARTMENT OF LANDS FISCAL YEAR 2025 TIMBER SALE PLAN

July 1, 2024 - June 30, 2025

Priest Lake Supervisory Area

Sale Name:

U2 Cedar

Estimated Auction: Spring 2025

Location: 15 Miles North of Coolin, ID

Drainages: Bear Creek, Goose Creek, Two Mouth Creek

Class I Streams: No

Class II Streams: Yes

Silvicultural Prescription: Clearcut, Seedtree

Harvest System: Cable Yarding, Ground - Based

APPROXIMATE

ACREAGE:
643 acres

VOLUME:
3,000 MBF
500 Poles

Timber Sale Legal Description

Subsection	Section	Township	Range
Pts E2NE, Pts NESE	11	061N	004W
Pts NWNW, Pts S2NW, Pts SW, Pts SWSE	12	061N	004W
NENW, Pts W2NE, Pts NWNW, Pts SENW	13	061N	004W
Pts NENE	14	061N	004W
Gov Lots 3, Pts Gov Lots 2, 4, Pts Gov Lots 3, 4, Pts S2NE, Pts SENW, Pts E2SW, Pts	30	062N	003W
Pts NWNE, Pts NENW	31	062N	003W
Pts Gov Lots 2, 3, Pts NWNE, Pts S2NE, Pts SENW, Pts NESW, Pts S2SW, Pts N2SE	14	062N	004W
Pts SESW, Pts SWSE	24	062N	004W
Pts NESE, Pts NWNE, Pts SENE, Pts NENW, Pts N2SW, Pts SESW, Pts N2SE, S2SE	25	062N	004W

Supervisory Area Totals: Priest Lake

Supervisory Area Acres: 4,819 acres

Supervisory Area Total Sawlog: 28,000 MBF

Supervisory Area Total Cedar Poles: 2,500 Cedar Poles

IDAHO DEPARTMENT OF LANDS FISCAL YEAR 2025 TIMBER SALE PLAN

July 1, 2024 - June 30, 2025

Pend Oreille Lake Supervisory Area

Sale Name:

Bodie Lookout

Estimated Auction: Winter 2025
Location: 2.5 Miles Northwest of Priest River, ID
Drainages: Bodie Creek
Class I Streams: No
Class II Streams: Yes
Silvicultural Prescription: Clearcut, Seedtree
Harvest System: Ground - Based, Prescriptive Yarding

APPROXIMATE

ACREAGE:
225 acres

VOLUME:
5,029 MBF

Timber Sale Legal Description

Subsection	Section	Township	Range
Pts SWNW, Pts NESW, Pts S2SW, Pts W2SE	15	T56N	R05W
Pts S2NE, Pts SENW, Pts S2	16	T56N	R05W

Sale Name:

Cocolalla Squeeze Cedar

Estimated Auction: Summer 2024
Location: 2 miles southeast of Westmond, ID
Drainages: Cocolalla
Class I Streams: No
Class II Streams: Yes
Silvicultural Prescription: Clearcut
Harvest System: Ground - Based, Tractor Skidding

APPROXIMATE

ACREAGE:
168 acres

VOLUME:
1,943 MBF
200 Poles

Timber Sale Legal Description

Subsection	Section	Township	Range
Pts NWSW, Pts S2SW	16	T55N	R02W
Pts NW	21	T55N	R02W
Pts N2NE, Pts N2NW	28	T55N	R02W

Sale Name:

Forgotten Fox Cedar

Estimated Auction: Winter 2025
Location: 13 miles northeast of Priest River, ID
Drainages: Fox Creek
Class I Streams: Yes
Class II Streams: Yes
Silvicultural Prescription: Clearcut, Seedtree
Harvest System: Prescriptive Yarding

APPROXIMATE

ACREAGE:
162 acres

VOLUME:
6,000 MBF
500 Poles

Timber Sale Legal Description

Subsection	Section	Township	Range
Pts Gov Lots 4	02	T57N	R04W
Pts Gov Lots 16, 17, 18, 19	03	T57N	R04W
Pts Gov Lots 1, 2, 3, 4, Pts NE, Pts E2NW, Pts NESW, Pts NWSE	31	T58N	R03W
Pts N2NW	32	T58N	R03W

IDAHO DEPARTMENT OF LANDS FISCAL YEAR 2025 TIMBER SALE PLAN

July 1, 2024 - June 30, 2025

Pend Oreille Lake Supervisory Area

Sale Name:

Never Summer

Estimated Auction: Spring 2025

Location: 7 miles south of Priest River

Drainages: Curtis Creek

Class I Streams: Yes

Class II Streams: Yes

Silvicultural Prescription: Clearcut, Overstory Removal, Seedtree

Harvest System: Prescriptive Yarding

APPROXIMATE

ACREAGE:
221 acres

VOLUME:
5,709 MBF

Timber Sale Legal Description

Subsection	Section	Township	Range
Pts Gov Lots 1, 2, 5, Pts SWNE	01	T55N	R05W
Pts S2NE, Pts NESW, Pts N2SE, Pts SWSE	11	T55N	R05W
NWSW, Pts W2NW, Pts NESW, Pts SWSW	12	T55N	R05W
Gov Lots 2, 3, 4	36	T56N	R05W

Sale Name:

Ridge Runner

Estimated Auction: Fall 2024

Location: 5 miles northeast of Naples, ID

Drainages: Highland Creek

Class I Streams: No

Class II Streams: Yes

Silvicultural Prescription: Clearcut, Seedtree

Harvest System: Ground - Based

APPROXIMATE

ACREAGE:
86 acres

VOLUME:
1,595 MBF

Timber Sale Legal Description

Subsection	Section	Township	Range
Pts S2	20	T61N	R01W

Sale Name:

Roman Beak Ton

Estimated Auction: Summer 2024

Location: 7 miles west of Naples, ID

Drainages: Roman Nose Creek and Fall Creek

Class I Streams: Yes

Class II Streams: Yes

Silvicultural Prescription: Clearcut, Seedtree

Harvest System: Ground - Based

APPROXIMATE

ACREAGE:
267 acres

VOLUME:
4,500 MBF

Timber Sale Legal Description

Subsection	Section	Township	Range
Pts NW	25	T61N	R02W
Pts SE	26	T61N	R02W
NENE, Pts NWNE, Pts S2NE	35	T61N	R02W
Pts W2NW	36	T61N	R02W

IDAHO DEPARTMENT OF LANDS FISCAL YEAR 2025 TIMBER SALE PLAN

July 1, 2024 - June 30, 2025

Pend Oreille Lake Supervisory Area

Sale Name:

Southern Leonia Cedar

Estimated Auction: Spring 2025

Location: 2.5 miles northeast of Naples, ID

Drainages: Twentymile Creek

Class I Streams: Yes

Class II Streams: Yes

Silvicultural Prescription: Clearcut, Overstory Removal, Seedtree

Harvest System: Cable Yarding, Prescriptive Yarding, Tractor Skidding

APPROXIMATE

ACREAGE:
223 acres

VOLUME:
4,335 MBF
2,690 Poles

Timber Sale Legal Description

Subsection	Section	Township	Range
Pts N2SW, Pts SWSW, Pts NWSE, Pts S2SE, SESW	02	T60N	R01E
Gov Lots 1, 2, 3, 4, Pts NESW, Pts S2SW, Pts NWSE, Pts S2SE, S2NE, S2NW, NWSW, NESE	04	T60N	R01E
Pts N2NE	11	T60N	R01E

Sale Name:

Steep and Cheep

Estimated Auction: Spring 2025

Location: 4 miles southwest of Naples, ID

Drainages: Dodge Creek

Class I Streams: No

Class II Streams: Yes

Silvicultural Prescription: Overstory Removal

Harvest System: Ground - Based

APPROXIMATE

ACREAGE:
329 acres

VOLUME:
2,500 MBF

Timber Sale Legal Description

Subsection	Section	Township	Range
Pts S2SE	08	T60N	R01W
Pts SWSW	09	T60N	R01W
Pts NW, Pts N2SW, Pts SWSW	16	T60N	R01W
Pts N2NE, Pts SWNE, Pts SESW, Pts NESE, Pts S2SE, SENE, NWSE	17	T60N	R01W

Sale Name:

The Last Sand Cedar

Estimated Auction: Summer 2024

Location: 4 miles east of Elmira, ID

Drainages: Sand Lake

Class I Streams: No

Class II Streams: Yes

Silvicultural Prescription: Overstory Removal

Harvest System: Prescriptive Yarding, Tractor Skidding

APPROXIMATE

ACREAGE:
160 acres

VOLUME:
1,560 MBF
200 Poles

Timber Sale Legal Description

Subsection	Section	Township	Range
Pts Gov Lots 1, 2, 3, N2SE, Pts S2NE, Pts SENW, Pts E2SW, Pts SWSE	06	T59N	R01E

IDAHO DEPARTMENT OF LANDS FISCAL YEAR 2025 TIMBER SALE PLAN

July 1, 2024 - June 30, 2025

**Pend Oreille Lake
Supervisory Area**

Sale Name:

Worn Leather Cedar

Estimated Auction: Fall 2024

Location: 11 miles northeast of Priest River, ID

Drainages: Big Creek

Class I Streams: No

Class II Streams: Yes

Silvicultural Prescription: Clearcut

Harvest System: Prescriptive Yarding

APPROXIMATE

ACREAGE:
93 acres

VOLUME:
3,500 MBF
400 Poles

Timber Sale Legal Description

Subsection	Section	Township	Range
Pts E2SW, Pts SE	02	T57N	R04W

Supervisory Area Totals: Pend Oreille Lake

Supervisory Area Acres: 1,934 acres
Supervisory Area Total Sawlog: 36,671 MBF
Supervisory Area Total Cedar Poles: 3,990 Cedar Poles

IDAHO DEPARTMENT OF LANDS FISCAL YEAR 2025 TIMBER SALE PLAN

July 1, 2024 - June 30, 2025

Mica Supervisory Area

Sale Name:

Big Creek

Estimated Auction: Fall 2024

Location: 1 mile East Wallace

Drainages: SF CDA River

Class I Streams: Yes

Class II Streams: Yes

Silvicultural Prescription: Clearcut

Harvest System: Cable Yarding, Cable Yarding (Extraordinary), Ground - Based, Prescriptive Yarding

APPROXIMATE

ACREAGE:
117 acres

VOLUME:
1,735 MBF

Timber Sale Legal Description

Subsection	Section	Township	Range
Pts.	16	48N	03E
Pts.	36	48N	04E

Sale Name:

BM Cedar

Estimated Auction: Spring 2025

Location: 8 miles W Spirit Lake

Drainages: Brickel Creek

Class I Streams: Yes

Class II Streams: Yes

Silvicultural Prescription: Clearcut, Shelterwood

Harvest System:

APPROXIMATE

ACREAGE:
266 acres

VOLUME:
4,030 MBF
800 Poles

Timber Sale Legal Description

Subsection	Section	Township	Range
Pts Gov Lots 4, Pts SESW, Pts SWSE	24	053N	006W
Pts Gov Lots 1, 2, 3, NENW, Pts NE, Pts SENW, Pts NESW, Pts N2SE, Pts SESE	25	053N	006W

Sale Name:

Lower Eagle Cedar

Estimated Auction: Spring 2025

Location: 5 Miles S Rose Lake

Drainages: Robinson Creek

Class I Streams: Yes

Class II Streams: Yes

Silvicultural Prescription: Clearcut, Overstory Removal

Harvest System: Ground - Based, Prescriptive Yarding

APPROXIMATE

ACREAGE:
549 acres

VOLUME:
7,570 MBF
800 Poles

Timber Sale Legal Description

Subsection	Section	Township	Range
Pts. Gov Lot 3 & 4, Pts. SWNW	5	47N	01W
Pts. Gov Lots 1-3, Pts. S2NE, Pts. SENW	6	47N	01W
Gov Lot 1, SESW	30	48N	01W
Gov Lot 1-3, Pts Gov Lot 4 & 5, Pts N2NE, NENW	31	48N	01W
Pts Gov Lot 4	32	48N	01W
Pts NENE	36	48N	02W

IDAHO DEPARTMENT OF LANDS FISCAL YEAR 2025 TIMBER SALE PLAN

July 1, 2024 - June 30, 2025

Mica Supervisory Area

Sale Name:

Westwood

Estimated Auction: Winter 2024

Location: 1.5 Miles north of Rathdrum, Idaho

Drainages: Spring Branch Creek

Class I Streams: Yes

Class II Streams: Yes

Silvicultural Prescription: Clearcut, Overstory Removal

Harvest System: Ground - Based, Prescriptive Yarding

APPROXIMATE

ACREAGE:
237 acres

VOLUME:
4,660 MBF

Timber Sale Legal Description

Subsection	Section	Township	Range
Pts Gov Lots 2, Pts NWNE, Pts S2NE, Pts NENW, SENW, W2SE	24	052N	005W

Supervisory Area Totals: Mica

Supervisory Area Acres: 1,169 acres

Supervisory Area Total Sawlog: 17,995 MBF

Supervisory Area Total Cedar Poles: 1,600 Cedar Poles

Mica - Other Agency

Sale Name:

Scott Field East

Estimated Auction: Fall 2024

Location: 1 SW Bayview

Drainages: Pend Oreille Lake

Class I Streams: No

Class II Streams: No

Silvicultural Prescription: Shelterwood

Harvest System: Ground - Based

APPROXIMATE

ACREAGE:
48 acres

VOLUME:
500 MBF

Timber Sale Legal Description

Subsection	Section	Township	Range
Pts. W2SW	4	53N	02W
Pts. SENE, Pts. N2SE, Pts. SESE	5	53N	02W
Pts. N2NE, Pts. SENE	8	53N	02W

IDAHO DEPARTMENT OF LANDS FISCAL YEAR 2025 TIMBER SALE PLAN

July 1, 2024 - June 30, 2025

St. Joe Supervisory Area

Sale Name:

Chunker

Estimated Auction: Spring 2025
Location: 4 miles SW of St. Maries, Idaho
Drainages: St. Maries River
Class I Streams: Yes
Class II Streams: Yes
Silvicultural Prescription: Clearcut
Harvest System: Cable Yarding, Ground - Based

APPROXIMATE
ACREAGE: 302 acres
VOLUME: 7,145 MBF

Timber Sale Legal Description

Subsection	Section	Township	Range
Pts. NE, Pts. S2NW, Pts. N2SW, Pts. N2SE	36	T45N	R2W
Pts. GL 1, Pts. N2NE, Pts. SWSW	8	T45N	R2W
Pts. S2SW	36	T46N	R2W

Sale Name:

Deer Haven

Estimated Auction: Summer 2024
Location: 2 miles NE of Santa, Idaho
Drainages: Davis Creek
Class I Streams: Yes
Class II Streams: Yes
Silvicultural Prescription: Seedtree, Shelterwood
Harvest System: Cable Yarding, Cable Yarding (Tethered), Ground - Based, Shovel Logging

APPROXIMATE
ACREAGE: 275 acres
VOLUME: 7,961 MBF

Timber Sale Legal Description

Subsection	Section	Township	Range
Pts. NE, Pts. SW, Pts. E2NW, Pts. SWNW, Pts. W2SE	12	T44N	R1W

Sale Name:

Flemming Mica Salvage

Estimated Auction: Winter 2025
Location: 13 miles S & E of Calder, Idaho
Drainages: Flemming Creek, Boulder Creek, Mica Creek
Class I Streams: Yes
Class II Streams: Yes
Silvicultural Prescription: Clearcut, Overstory Removal
Harvest System: Cable Yarding, Ground - Based

APPROXIMATE
ACREAGE: 182 acres
VOLUME: 1,420 MBF

Timber Sale Legal Description

Subsection	Section	Township	Range
Pts. W2SW	23	T45N	R2E
Pts. SW	28	T45N	R4E
Pts. SWNE, Pts. S2NW, Pts. SW, Pts. NWSE	36	T45N	R4E

IDAHO DEPARTMENT OF LANDS FISCAL YEAR 2025 TIMBER SALE PLAN

July 1, 2024 - June 30, 2025

St. Joe Supervisory Area

Sale Name:

Leberite 40

Estimated Auction: Fall 2024
Location: 19 miles E of Clarkia, Idaho
Drainages: Floodwood Creek, Cedar Creek
Class I Streams: Yes
Class II Streams: Yes
Silvicultural Prescription: Shelterwood
Harvest System: Cable Yarding, Ground - Based

APPROXIMATE

ACREAGE:
413 acres

VOLUME:
11,600 MBF

Timber Sale Legal Description

Subsection	Section	Township	Range
Pts. NENE, Pts. S2NE, Pts. S2	29	T42N	R5E
Pts. SE	30	T42N	R5E
Pts. SE	32	T42N	R5E

Sale Name:

Mid Pierce

Estimated Auction: Spring 2025
Location: 5 miles NE of Fernwood, Idaho
Drainages: Olson Creek
Class I Streams: Yes
Class II Streams: Yes
Silvicultural Prescription: Clearcut, Overstory Removal, Shelterwood
Harvest System: Cable Yarding, Ground - Based

APPROXIMATE

ACREAGE:
283 acres

VOLUME:
6,495 MBF

Timber Sale Legal Description

Subsection	Section	Township	Range
Pts. SESW, Pts. SWSE, Pts. SE	27	T44N	R1E
Pts. N2NE, Pts. SW, Pts. NE, Pts. NENW	34	T44N	R1E
Pts. NESW	35	T44N	R1E

IDAHO DEPARTMENT OF LANDS FISCAL YEAR 2025 TIMBER SALE PLAN

July 1, 2024 - June 30, 2025

St. Joe Supervisory Area

Sale Name:

Not For Long

Estimated Auction: Fall 2024

Location: 12 miles NE of Elk River, Idaho

Drainages: Robinson Creek, Long Creek

Class I Streams: Yes

Class II Streams: No

Silvicultural Prescription: Clearcut, Overstory Removal, Shelterwood

Harvest System: Cable Yarding, Ground - Based, Tractor Skidding

APPROXIMATE

ACREAGE:
519 acres

VOLUME:
10,300 MBF

Timber Sale Legal Description

Subsection	Section	Township	Range
Pts. NWSW, Pts. S2SW, Pts. SWSE	28	T41N	R4E
Pts. E2SE	29	T41N	R4E
Pts. GL 4, Pts. SESW, Pts. SWSE	30	T41N	R4E
Pts. GL 1 & 6, Pts. NE, Pts. E2NW, Pts. N2SE	31	T41N	R4E
Pts. GL 1, Pts. NENE, Pts. NWNW, Pts. S2NW, Pts. N2SW	32	T41N	R4E
Pts. GL 2,3,4, Pts. W2NE, Pts. N2NW, Pts. SENW, Pts. N2SW, Pts. NWSE	33	T41N	R4E

Sale Name:

Phone Home

Estimated Auction: Winter 2025

Location: 4 miles S of Clarkia, Idaho

Drainages: Mann Creek, Stony Creek

Class I Streams: Yes

Class II Streams: Yes

Silvicultural Prescription: Clearcut, Seedtree

Harvest System: Cable Yarding

APPROXIMATE

ACREAGE:
149 acres

VOLUME:
4,690 MBF

Timber Sale Legal Description

Subsection	Section	Township	Range
Pts. NENW, Pts. NWNW, Pts. SENW, Pts. SWNW, Pts. NESW, Pts. N2SE, Pts. SENE	36	T42N	R2E

Sale Name:

Pizza Delivered Products

Estimated Auction: Fall 2024

Location: 5 miles S of St. Maries, Idaho

Drainages: Syringa Creek

Class I Streams: Yes

Class II Streams: Yes

Silvicultural Prescription: Clearcut

Harvest System: Ground - Based

APPROXIMATE

ACREAGE:
82 acres

VOLUME:
1,950 MBF

Timber Sale Legal Description

Subsection	Section	Township	Range
Pts. NE, Pts. N2SE	12	T45N	R2W

IDAHO DEPARTMENT OF LANDS FISCAL YEAR 2025 TIMBER SALE PLAN

July 1, 2024 - June 30, 2025

St. Joe Supervisory Area

Sale Name:

Rising Sun Cedar

Estimated Auction: Spring 2025

Location: 4 miles SW of Fernwood, ID

Drainages: Little Carpenter Creek

Class I Streams: No

Class II Streams: Yes

Silvicultural Prescription: Clearcut

Harvest System: Cable Yarding, Ground - Based, Shovel Logging

APPROXIMATE

ACREAGE:
71 acres

VOLUME:
2,390 MBF
1,065 Poles

Timber Sale Legal Description

Subsection	Section	Township	Range
Pts. NWNE, Pts. NW	15	T43N	R1W

Sale Name:

Rogue One

Estimated Auction: Spring 2025

Location: 4 miles SW of Emida, Idaho

Drainages: Santa Creek

Class I Streams: No

Class II Streams: Yes

Silvicultural Prescription: Clearcut

Harvest System: Ground - Based

APPROXIMATE

ACREAGE:
95 acres

VOLUME:
2,825 MBF

Timber Sale Legal Description

Subsection	Section	Township	Range
Pts N2NE	11	T43N	R3W
Pts. NESE, Pts. S2SE	2	T43N	R3W

Sale Name:

Sly Meadows Ton

Estimated Auction: Fall 2024

Location: 10 miles SE of St. Maries, ID

Drainages: Canyon Creek

Class I Streams: No

Class II Streams: Yes

Silvicultural Prescription: Clearcut

Harvest System: Ground - Based

APPROXIMATE

ACREAGE:
191 acres

VOLUME:
2,050 MBF

Timber Sale Legal Description

Subsection	Section	Township	Range
Pts. N2NE, Pts. SWNE, Pts. NW, Pts. SESW, Pts. SE	36	T46N	R1W

IDAHO DEPARTMENT OF LANDS FISCAL YEAR 2025 TIMBER SALE PLAN

July 1, 2024 - June 30, 2025

St. Joe Supervisory Area

Sale Name:

Spiked Out

Estimated Auction: Fall 2024

Location: 19 miles ESE of Clarkia, Idaho

Drainages: Meadow Creek

Class I Streams: Yes

Class II Streams: Yes

Silvicultural Prescription: Clearcut, Seedtree

Harvest System: Ground - Based

APPROXIMATE

ACREAGE:
572 acres

VOLUME:
11,055 MBF

Timber Sale Legal Description

Subsection	Section	Township	Range
Pts. SESE	1	T41N	R4E
Pts. SENE	12	T41N	R4E
Pts. SW	4	T41N	R5E
Pts. W2SW, Pts. SESW, Pts. SWSE	5	T41N	R5E
Pts. GL 2, Pts. GL 6-7, Pts. SWNE, Pts. E2SW, Pts. W2SE	6	T41N	R5E
Pts. GL 1-3, Pts. NWNE, Pts. E2NW, Pts. NESW	7	T41N	R5E
Pts. NE, Pts. NENW	8	T41N	R5E

Sale Name:

Stick It

Estimated Auction: Summer 2024

Location: 6 miles SW of Fernwood, Idaho

Drainages: Tyson Creek, Little Carpenter Creek, Emerald Creek, St. Maries River

Class I Streams: Yes

Class II Streams: Yes

Silvicultural Prescription: Clearcut, Commercial Thin, ROW, Seedtree, Shelterwood, Single Tree Select

Harvest System: Ground - Based, Ground - Based (Tethered), Shovel Logging

APPROXIMATE

ACREAGE:
486 acres

VOLUME:
7,325 MBF

Timber Sale Legal Description

Subsection	Section	Township	Range
Pts. SW, Pts. S2SE	16	T43N	R1E
Pts. SESE	36	T43N	R1W
Pts. N2NW, Pts. SWNW, Pts. NWSW	4	T43N	R1W
Pts. S2NE	5	T43N	R1W
Pts. NENW, Pts. S2NW, Pts. N2SW, Pts. SESW, Pts. SE	16	T44N	R1W
Pts. N2NE, Pts. N2NW	21	T44N	R1W
Pts. W2NW	36	T44N	R1W

IDAHO DEPARTMENT OF LANDS FISCAL YEAR 2025 TIMBER SALE PLAN

July 1, 2024 - June 30, 2025

**St. Joe
Supervisory Area**

Sale Name:

Thompson Turkey

Estimated Auction: Fall 2024

Location: 4 miles NE of Harrison, Idaho

Drainages: Thompson Lake

Class I Streams: Yes

Class II Streams: Yes

Silvicultural Prescription: Clearcut, Overstory Removal, ROW

Harvest System: Cable Yarding, Ground - Based

APPROXIMATE

ACREAGE:
213 acres

VOLUME:
3,605 MBF

Timber Sale Legal Description

Subsection	Section	Township	Range
Pts. GL 1, Pts. GL 3-5, Pts. NWNE, Pts. NENW, Pts. NESW, Pts. SW	16	T48N	R3W

Supervisory Area Totals: St. Joe

Supervisory Area Acres: 3,833 acres

Supervisory Area Total Sawlog: 80,811 MBF

Supervisory Area Total Cedar Poles: 1,065 Cedar Poles

IDAHO DEPARTMENT OF LANDS FISCAL YEAR 2025 TIMBER SALE PLAN

July 1, 2024 - June 30, 2025

Clearwater Supervisory Area

Sale Name:

Anchor Cedar

Estimated Auction: Winter 2025

Location: 13 miles northwest of Headquarters, ID

Drainages: Benton Creek

Class I Streams: No

Class II Streams: Yes

Silvicultural Prescription: Overstory Removal

Harvest System: Cable Yarding, Ground - Based

APPROXIMATE

ACREAGE:
100 acres

VOLUME:
3,815 MBF
0 Poles

Timber Sale Legal Description

Subsection	Section	Township	Range
NENE, Pts SENE, Pts NESE	20	040N	005E
SWNW	27	040N	005E
NWNE, S2NE, Pts NW	28	040N	005E
NENE, SENW	29	040N	005E

Sale Name:

Back Again

Estimated Auction: Fall 2024

Location: 10 miles west to Orofino, Idaho

Drainages: Orofino Creek

Class I Streams: No

Class II Streams: Yes

Silvicultural Prescription: Seedtree

Harvest System: Tractor Skidding

APPROXIMATE

ACREAGE:
129 acres

VOLUME:
2,815 MBF

Timber Sale Legal Description

Subsection	Section	Township	Range
Pts NWNE, Pts S2NE, Pts NW, Pts SW, Pts NESE	36	037N	003E

IDAHO DEPARTMENT OF LANDS FISCAL YEAR 2025 TIMBER SALE PLAN

July 1, 2024 - June 30, 2025

Clearwater Supervisory Area

Sale Name:

Big Creek OSR

Estimated Auction: Spring 2025

Location: 7 miles northwest of Headquarters, ID

Drainages: Big Creek, Caldwell Creek, Dworshak Reservoir - North Fork Clearwater River

Class I Streams: Yes

Class II Streams: Yes

Silvicultural Prescription: Overstory Removal

Harvest System: Prescriptive Yarding

APPROXIMATE

ACREAGE:
1,237 acres

VOLUME:
10,405 MBF

Timber Sale Legal Description

Subsection	Section	Township	Range
Pts. NE, Pts. E2NW, Pts. NESW, Pts. NWSE	10	38N	4E
Pts. SWSW	16	38N	4E
Pts. W2NE, Pts. NW, Pts. SESW, Pts. S2SE	17	38N	4E
Pts. NWNE, Pts. NENENW	18	38N	4E
Pts. Gvt. L3-4, Pts. S2NW, Pts. SW	2	38N	4E
Pts. N2NE	20	38N	4E
Pts. NWNW	21	38N	4E
Pts. S2NE, Pts. E2SW, Pts. SE	3	38N	4E
Pts. SW, Pts. SWSE	4	38N	4E
Pts. E2SE, Pts. NENWSE, Pts. S2NWSE, Pts. NESWSE	5	38N	4E
Pts. SESESW, Pts. SWSWSE	7	38N	4E
Pts. S2SW, Pts. SWSE	8	38N	4E
Pts. NE, Pts. N2NW, Pts. SENW	9	38N	4E
Pts. S2NE, Pts. SESW, Pts. SE	35	39N	4E

Sale Name:

Cedar Cabin

Estimated Auction: Fall 2024

Location: 8 miles south of Elk River, Idaho

Drainages: Cedar Creek

Class I Streams: No

Class II Streams: Yes

Silvicultural Prescription: Overstory Removal

Harvest System: Ground - Based, Prescriptive Yarding

APPROXIMATE

ACREAGE:
193 acres

VOLUME:
840 MBF
0 Poles

Timber Sale Legal Description

Subsection	Section	Township	Range
Pts SWNW, Pts NWSW	01	038N	002E
Pts Gov Lots 1, 2, Pts S2NE, Pts S2NW, Pts NESW, Pts N2SE	02	038N	002E

IDAHO DEPARTMENT OF LANDS FISCAL YEAR 2025 TIMBER SALE PLAN

July 1, 2024 - June 30, 2025

Clearwater Supervisory Area

Sale Name:

Deer Divide Cedar

Estimated Auction: Fall 2024

Location: 5 Miles NE of Orofino Idaho

Drainages: Cedar Cr.

Class I Streams: No

Class II Streams: Yes

Silvicultural Prescription: Clearcut, ROW, Seedtree

Harvest System: Cable Yarding, Tractor Skidding

APPROXIMATE

ACREAGE:
297 acres

VOLUME:
8,290 MBF
2,000 Poles

Timber Sale Legal Description

Subsection	Section	Township	Range
Pts. Lot 2, Pts. Lot 3, Pts. Lot 4	5	36N	3E
Pts. NENE, Pts. S2NE, Pts. N2SE, Pts. SESE	31	37N	3E
Pts. W2NE, Pts. NW, Pts. SW	32	37N	3E

Sale Name:

Huck Seed Cedar

Estimated Auction: Winter 2025

Location: 4 Miles NE of Orofino Idaho

Drainages: Deer Cr.

Class I Streams: No

Class II Streams: Yes

Silvicultural Prescription: Clearcut, Overstory Removal

Harvest System: Cable Yarding, Tractor Skidding

APPROXIMATE

ACREAGE:
288 acres

VOLUME:
3,045 MBF
0 Poles

Timber Sale Legal Description

Subsection	Section	Township	Range
Pts Gov Lots 4, Pts SWNE, Pts S2NW, Pts N2SW, Pts N2SE	05	036N	003E
Pts Gov Lots 1, 2, 3, 4, 5, 6, 7, Pts S2NE, Pts SENW, Pts E2SW, Pts NESE	06	036N	003E

IDAHO DEPARTMENT OF LANDS FISCAL YEAR 2025 TIMBER SALE PLAN

July 1, 2024 - June 30, 2025

Clearwater Supervisory Area

Sale Name:

Johnson Road

Estimated Auction: Summer 2024

Location: 11 Miles northeast of Orofino, Idaho

Drainages: Whiskey Cr. and Mckinnon Cr.

Class I Streams: Yes

Class II Streams: Yes

Silvicultural Prescription: Overstory Removal, Seedtree

Harvest System: Cable Yarding, Tractor Skidding

APPROXIMATE

ACREAGE:
435 acres

VOLUME:
6,325 MBF

Timber Sale Legal Description

Subsection	Section	Township	Range
Pts.NWNW	16	37N	3E
Pts. NE	17	37N	3E
Pts. Lot 3, Pts. Lot 4, Pts. S2NW, Pts. N2SW	3	37N	3E
Pts. Lot 1, Pts. Lot 2, Pts. S2NE, Pts. NESE	4	37N	3E
Pts. SE	8	37N	3E
Pts. SW, Pts. W2SE	9	37N	3E

Sale Name:

Last Loseth

Estimated Auction: Spring 2025

Location: 9 miles North of Orofino, Idaho

Drainages: Unnamed tributaries to Dworshak Reservoir

Class I Streams: No

Class II Streams: Yes

Silvicultural Prescription: Clearcut, Seedtree

Harvest System: Cable Yarding, Prescriptive Yarding, Tractor Skidding

APPROXIMATE

ACREAGE:
230 acres

VOLUME:
5,670 MBF

Timber Sale Legal Description

Subsection	Section	Township	Range
Pts N2SW, SWSW, Pts SESW, Pts SWSE	29	038N	002E
Pts NENW, SWNW, Pts SENW, Pts N2SW	32	038N	002E

IDAHO DEPARTMENT OF LANDS FISCAL YEAR 2025 TIMBER SALE PLAN

July 1, 2024 - June 30, 2025

Clearwater Supervisory Area

Sale Name:

Lower Benton Cedar

Estimated Auction: Spring 2025
Location: 13 miles north of Headquarters, ID
Drainages: Benton Creek
Class I Streams: Yes
Class II Streams: Yes
Silvicultural Prescription: Overstory Removal
Harvest System: Cable Yarding

APPROXIMATE

ACREAGE:
147 acres

VOLUME:
3,355 MBF
0 Poles

Timber Sale Legal Description

Subsection	Section	Township	Range
Pts E2SE	08	040N	005E
Pts. SWNE, Pts. S2NW, Pts. SW, Pts. N2SE, Pts. SWSE	09	040N	005E

Sale Name:

Nelson Cranberry Cedar

Estimated Auction: Summer 2024
Location: 12 miles North of Orofino, Idaho
Drainages: Cranberry Creek
Class I Streams: Yes
Class II Streams: Yes
Silvicultural Prescription: Single Tree Select
Harvest System: Ground - Based, Helicopter

APPROXIMATE

ACREAGE:
287 acres

VOLUME:
1,600 MBF
2,325 Poles

Timber Sale Legal Description

Subsection	Section	Township	Range
Pts SW, Pts NWSE	03	038N	002E
Pts SESE	04	038N	002E
Pts E2NE	09	038N	002E
Pts N2NW, Pts SWNW	10	038N	002E
Pts SWNE, Pts SENW, Pts NESW, Pts N2SE, N2SWSE, SESE	13	038N	002E

IDAHO DEPARTMENT OF LANDS FISCAL YEAR 2025 TIMBER SALE PLAN

July 1, 2024 - June 30, 2025

Clearwater Supervisory Area

Sale Name:

Point Cedar OSR

Estimated Auction: Summer 2024
Location: 16.5 Miles east from Orofino
Drainages: Winter Creek
Class I Streams: No
Class II Streams: Yes
Silvicultural Prescription: Overstory Removal
Harvest System: Prescriptive Yarding, Tractor Skidding

APPROXIMATE

ACREAGE:
677 acres

VOLUME:
3,145 MBF
0 Poles

Timber Sale Legal Description

Subsection	Section	Township	Range
Pts NWSW, Pts S2SW, PtsS2SE	11	036N	004E
Pts N2NE, Pts NENW, Pts S2SW, Pts W2SE	12	036N	004E
Pts W2NE, Pts SENE, Pts NW, Pts NESW, Pts NWSE	13	036N	004E
Pts N2, Pts SW, Pts NWSE	14	036N	004E

Sale Name:

Rainy Slopes II OSR

Estimated Auction: Winter 2025
Location: 12 miles ENE from Orofino
Drainages: Rainy Creek and Cedar Creek
Class I Streams: No
Class II Streams: Yes
Silvicultural Prescription: Clearcut, Overstory Removal
Harvest System: Prescriptive Yarding, Tractor Skidding

APPROXIMATE

ACREAGE:
297 acres

VOLUME:
1,275 MBF

Timber Sale Legal Description

Subsection	Section	Township	Range
Pts SWNE, Pts NENW, Pts S2NW, Pts N2SW, Pts SWSW, Pts NWSE	16	37N	4E
Pts. NESE, Pts. SENE	17	37N	4E
Pts. N2SE, Pts. NESW	19	37N	4E
Pts. S2NW, Pts. N2SW	20	37N	4E

IDAHO DEPARTMENT OF LANDS FISCAL YEAR 2025 TIMBER SALE PLAN

July 1, 2024 - June 30, 2025

Clearwater Supervisory Area

Sale Name:

Whiskey Pieces

Estimated Auction: Fall 2024

Location: 12 mi NE from Orofino

Drainages: Whiskey Cr.

Class I Streams: Yes

Class II Streams: Yes

Silvicultural Prescription: Overstory Removal, Seedtree

Harvest System: Cable Yarding, Tractor Skidding

APPROXIMATE

ACREAGE:
205 acres

VOLUME:
3,370 MBF

Timber Sale Legal Description

Subsection	Section	Township	Range
Pts. Lot 3, Pts. Lot 4 Pts. S2NW	5	37N	4E
Pts. Lot 1, Pts. S2NE	6	37N	4E
Pts. S2SW, Pts. SWSE	32	38N	4E

Sale Name:

White Doe Cedar

Estimated Auction: Fall 2024

Location: 14 mi NE from Orofino

Drainages: White Creek/Doe Creek

Class I Streams: No

Class II Streams: Yes

Silvicultural Prescription: Overstory Removal

Harvest System: Cable Yarding, Tractor Skidding

APPROXIMATE

ACREAGE:
240 acres

VOLUME:
1,050 MBF
0 Poles

Timber Sale Legal Description

Subsection	Section	Township	Range
Pts SE, Pts NESW, Pts S2SW	25	038N	003E
Pts N2NE, Pts NW	36	038N	003E

Supervisory Area Totals: Clearwater

Supervisory Area Acres: 4,762 acres

Supervisory Area Total Sawlog: 55,000 MBF

Supervisory Area Total Cedar Poles: 4,325 Cedar Poles

IDAHO DEPARTMENT OF LANDS FISCAL YEAR 2025 TIMBER SALE PLAN

July 1, 2024 - June 30, 2025

Ponderosa Supervisory Area

Sale Name:

Burnt Rose

Estimated Auction: Summer 2024

Location: 4 miles southeast of Elk River, ID

Drainages: Deep Creek, Burnt Creek

Class I Streams: Yes

Class II Streams: Yes

Silvicultural Prescription: Clearcut, Overstory Removal, ROW

Harvest System: Cable Yarding, Ground - Based, Prescriptive Yarding

APPROXIMATE

ACREAGE:
206 acres

VOLUME:
4,005 MBF

Timber Sale Legal Description

Subsection	Section	Township	Range
Pt E2SW; Pt W2SE	12	39N	02E
Pt S2NE; Pt S2NW; Pt N2SW; Pt N2SE	13	39N	02E

Sale Name:

Holy Cole Cedar

Estimated Auction: Fall 2024

Location: 12 miles northeast of Southwick, ID

Drainages: Cole Creek

Class I Streams: No

Class II Streams: Yes

Silvicultural Prescription: Clearcut, ROW

Harvest System: Cable Yarding, Ground - Based

APPROXIMATE

ACREAGE:
215 acres

VOLUME:
7,515 MBF
4,575 Poles

Timber Sale Legal Description

Subsection	Section	Township	Range
Gov Lot 4; Pt SWNW; Pt W2SW	5	38N	02E
Gov Lot 1; Pt SENE; Pt NESE	6	38N	02E
Pt SWNE; Pt NWSE	8	38N	02E
Pt SESW	32	39N	02E

Sale Name:

Mashed Potato Cedar

Estimated Auction: Winter 2025

Location: 3 miles northeast of Deary, ID

Drainages: Barn Creek, Corral Creek

Class I Streams: Yes

Class II Streams: Yes

Silvicultural Prescription: Clearcut, Overstory Removal, ROW

Harvest System: Cable Yarding, Ground - Based, Ground - Based (Tethered)

APPROXIMATE

ACREAGE:
254 acres

VOLUME:
7,915 MBF
1,850 Poles

Timber Sale Legal Description

Subsection	Section	Township	Range
Pt NWNE, Pt S2NE, Pt N2NW, Pt N2SE	10	40N	02W
Pt Govt Lots 1-2, Pt NENE, Pt SWNW, Pt NESW	11	40N	02W
Pt W2NE, Pt NW, Pt NESW, Pt N2SE	12	40N	02W

IDAHO DEPARTMENT OF LANDS FISCAL YEAR 2025 TIMBER SALE PLAN

July 1, 2024 - June 30, 2025

Ponderosa Supervisory Area

Sale Name:

Moose Stew

Estimated Auction: Spring 2025

Location: 2 miles west of Bovill, ID

Drainages: Moose Creek

Class I Streams: No

Class II Streams: Yes

Silvicultural Prescription: Clearcut, ROW

Harvest System: Shovel Logging

APPROXIMATE

ACREAGE:
145 acres

VOLUME:
4,715 MBF

Timber Sale Legal Description

Subsection	Section	Township	Range
Pt NENW, Pt S2NW, Pt SW, Pt E2SE	27	41N	01W
Pt NENW	34	41N	01W

Sale Name:

Purdue High Cedar

Estimated Auction: Spring 2025

Location: 2 miles north of Bovill, ID

Drainages: Purdue Creek

Class I Streams: Yes

Class II Streams: Yes

Silvicultural Prescription: Clearcut, ROW

Harvest System: Ground - Based, Prescriptive Yarding

APPROXIMATE

ACREAGE:
241 acres

VOLUME:
7,770 MBF
2,560 Poles

Timber Sale Legal Description

Subsection	Section	Township	Range
Pt Gov Lot 2-4, Pt SENW, Pt E2SW	19	41N	01E
Pt SW, Pt W2SE	20	41N	01E
Pt N2NE, Pt SWNE, Pt NW, Pt N2SW, Pt SESW, Pt NWSE	29	41N	01E
Pt SENE, Pt NESE	30	41N	01E

IDAHO DEPARTMENT OF LANDS FISCAL YEAR 2025 TIMBER SALE PLAN

July 1, 2024 - June 30, 2025

Ponderosa Supervisory Area

Sale Name:

Trumbull

Estimated Auction: Summer 2024

Location: 1 mile north of Elk River, ID

Drainages: Lindley Creek, West Fork Lindley Creek, East Fork Potlatch River

Class I Streams: Yes

Class II Streams: Yes

Silvicultural Prescription: Clearcut, ROW, Shelterwood

Harvest System: Cable Yarding (Extraordinary), Shovel Logging, Tractor Skidding

APPROXIMATE

ACREAGE:
183 acres

VOLUME:
8,445 MBF

Timber Sale Legal Description

Subsection	Section	Township	Range
Pt SWSE	7	40N	01E
Pt E2SW, Pt SE	22	40N	02E
Pt W2SW	23	40N	02E
Pt NENW	27	40N	02E

Supervisory Area Total: Ponderosa

Supervisory Area Acres: 1,244 acres

Supervisory Area Total Sawlog: 40,365 MBF

Supervisory Area Total Cedar Poles: 8,985 Cedar Poles

IDAHO DEPARTMENT OF LANDS FISCAL YEAR 2025 TIMBER SALE PLAN

July 1, 2024 - June 30, 2025

Maggie Creek Supervisory Area

Sale Name:

Cool Hand Lew

Estimated Auction: Winter 2025

Location: 4 miles NE of Weippe

Drainages: Burcham Creek

Class I Streams: Yes

Class II Streams: Yes

Silvicultural Prescription: Clearcut, Shelterwood

Harvest System: Ground - Based

APPROXIMATE

ACREAGE:
300 acres

VOLUME:
8,810 MBF

Timber Sale Legal Description

Subsection	Section	Township	Range
Pts. Govt. Lot 2	4	35N	5E
Pts. NENE	32	36N	5E
Pts. NE, Pts. N2NW, Pts. NESW, Pts. SE	33	36N	5E

Sale Name:

Fangorn Forest Cedar

Estimated Auction: Winter 2025

Location: 8 Miles SE of Weippe

Drainages: Pete & Charlie Creek

Class I Streams: No

Class II Streams: Yes

Silvicultural Prescription: Clearcut, Shelterwood

Harvest System: Ground - Based

APPROXIMATE

ACREAGE:
180 acres

VOLUME:
4,945 MBF
500 Poles

Timber Sale Legal Description

Subsection	Section	Township	Range
Pts SENW, Pts. SWNE, Pts NWSE, Pts NESW, Pts NWSE, Pts NESE, SESW, Pts SWSE	10	T 34 N	R 05 E
Pts NWNW, Pts NENW, Pts NWNE, Pts SWNW, Pts SENW	15	T 34 N	R 05 E

IDAHO DEPARTMENT OF LANDS FISCAL YEAR 2025 TIMBER SALE PLAN

July 1, 2024 - June 30, 2025

Maggie Creek Supervisory Area

Sale Name:

Gotham Ridge Cedar

Estimated Auction: Summer 2024

Location: East of Weippe

Drainages: Bat Creek

Class I Streams: Yes

Class II Streams: Unk

Silvicultural Prescription: Clearcut, Overstory Removal

Harvest System: Cable Yarding, Tractor Skidding

APPROXIMATE

ACREAGE:
386 acres

VOLUME:
6,185 MBF
0 Poles

Timber Sale Legal Description

Subsection	Section	Township	Range
Pts, SW2	27	35	5E
Pts, N2, SWNE, SENW, N2SW, SESW, NWSE, SE2	28	35	5E
Pts, NE2	33	35	5E
Pts, NW2, SENW	34	35	5E

Sale Name:

Gulch Island Cedar

Estimated Auction: Summer 2024

Location: 2 miles NE of Weippe

Drainages: Kamiah Gulch

Class I Streams: No

Class II Streams: Yes

Silvicultural Prescription: Shelterwood

Harvest System: Ground - Based

APPROXIMATE

ACREAGE:
102 acres

VOLUME:
1,465 MBF
0 Poles

Timber Sale Legal Description

Subsection	Section	Township	Range
SESE	1	35N	4E
NENE	12	35N	4E
Pts, L6, L7, SW2	6	35N	5E
Pts, L1, NENW	7	35N	5E

Sale Name:

Mirkwood

Estimated Auction: Spring 2025

Location: 5 Miles Southeast of Weippe, Idaho

Drainages: Fords Creek

Class I Streams: No

Class II Streams: Yes

Silvicultural Prescription: Clearcut, Shelterwood

Harvest System: Ground - Based

APPROXIMATE

ACREAGE:
205 acres

VOLUME:
4,800 MBF

Timber Sale Legal Description

Subsection	Section	Township	Range
Pts. N 1/2	5	T34N	R05E
Pts SESW	32	T35N	R05E

IDAHO DEPARTMENT OF LANDS FISCAL YEAR 2025 TIMBER SALE PLAN

July 1, 2024 - June 30, 2025

Maggie Creek Supervisory Area

Sale Name:

North Loop

Estimated Auction: Spring 2025

Location: 9 Miles NE Kooskia

Drainages: Maggie Creek

Class I Streams: No

Class II Streams: Yes

Silvicultural Prescription: Clearcut, Overstory Removal

Harvest System: Ground - Based

APPROXIMATE

ACREAGE:
352 acres

VOLUME:
3,475 MBF

Timber Sale Legal Description

Subsection	Section	Township	Range
Pts W2NW, Pts NWSW	10	33N	05E
Pts S2SE	11	33N	05E
Pts NE, Pts E2NW, Pts SW, Pts NWSE	14	33N	05E
Pts S2NE, Pts SESW, Pts SE	15	33N	05E
Pts NWNE, Pts NENW	22	33N	05E
Pts NWNW	23	33N	05E
Pts E2NE, Pts N2SE	9	33N	05E

Sale Name:

Section 36 OSR

Estimated Auction: Fall 2024

Location: 6 Miles Northeast of Kamiah

Drainages: Maggie Creek

Class I Streams: No

Class II Streams: Yes

Silvicultural Prescription: Overstory Removal

Harvest System: Ground - Based

APPROXIMATE

ACREAGE:
206 acres

VOLUME:
415 MBF

Timber Sale Legal Description

Subsection	Section	Township	Range
Pts E2, Pts. NESW	36	34N	04E

Supervisory Area Totals: Maggie Creek

Supervisory Area Acres: 1,731 acres

Supervisory Area Total Sawlog: 30,095 MBF

Supervisory Area Total Cedar Poles: 500 Cedar Poles

IDAHO DEPARTMENT OF LANDS FISCAL YEAR 2025 TIMBER SALE PLAN

July 1, 2024 - June 30, 2025

Payette Lakes Supervisory Area

Sale Name:

Deep South Ton

Estimated Auction: Winter 2025

Location: 8 Miles Northeast of Cascade, ID

Drainages: Deep Creek

Class I Streams: No

Class II Streams: Yes

Silvicultural Prescription: Clearcut, Seedtree

Harvest System: Ground - Based

APPROXIMATE

ACREAGE:
147 acres

VOLUME:
1,515 MBF

Timber Sale Legal Description

Subsection	Section	Township	Range
Pts. L1, Pts. L2, Pts. S2NE, Pts. SE	1	14N	04E
Pts. NENE	12	14N	04E
Pts. SWSE	36	15N	04E

Sale Name:

Dog Shorts Ton

Estimated Auction: Summer 2024

Location: 5 Miles Southeast of Riggins, ID

Drainages: Salmon River

Class I Streams: No

Class II Streams: Yes

Silvicultural Prescription: Overstory Removal

Harvest System: Cable Yarding

APPROXIMATE

ACREAGE:
432 acres

VOLUME:
3,200 MBF

Timber Sale Legal Description

Subsection	Section	Township	Range
Pts. NW, Pts. E2SW, Pts. SE	25	24N	01E
Pts. NE, Pts. NENW, Pts. NESE	36	24N	01E
Pts. L4	30	24N	02E
Pts. L1, L2, L3; Pts. E2NW	31	24N	02E

IDAHO DEPARTMENT OF LANDS FISCAL YEAR 2025 TIMBER SALE PLAN

July 1, 2024 - June 30, 2025

Payette Lakes Supervisory Area

Sale Name:

Great Scott Ton

Estimated Auction: Fall 2024
Location: 5 Miles Northeast of Cascade, ID
Drainages: Big Creek
Class I Streams: No
Class II Streams: Yes
Silvicultural Prescription: ROW, Seedtree
Harvest System: Ground - Based

APPROXIMATE

ACREAGE:
573 acres

VOLUME:
4,440 MBF

Timber Sale Legal Description

Subsection	Section	Township	Range
Pts. S2SW	11	14N	04E
Pts. W2, Pts. W2SE, Pts. SESE	14	14N	04E
Pts. SENE, Pts. SESE	15	14N	04E
Pts. E2NE	22	14N	04E
Pts. NE, Pts. W2, Pts. NWSE	23	14N	04E

Sale Name:

Lakey Ton

Estimated Auction: Winter 2025
Location: 9 Miles Northwest of Council, ID
Drainages: Lakey Creek
Class I Streams: No
Class II Streams: Yes
Silvicultural Prescription: Overstory Removal, ROW
Harvest System: Ground - Based, Prescriptive Yarding

APPROXIMATE

ACREAGE:
392 acres

VOLUME:
1,990 MBF

Timber Sale Legal Description

Subsection	Section	Township	Range
Pts. SESW, Pts. S2SE	20	17N	02W
Pts. S2NE, Pts. W2NW, Pts. SENW, Pts. N2SW, Pts. W2SE	28	17N	02W
Pts. E2, Pts. E2W2	29	17N	02W

IDAHO DEPARTMENT OF LANDS FISCAL YEAR 2025 TIMBER SALE PLAN

July 1, 2024 - June 30, 2025

Payette Lakes Supervisory Area

Sale Name:

North Skern Ton

Estimated Auction: Spring 2025

Location: 6 Miles West of New Meadows, ID

Drainages: Weiser

Class I Streams: No

Class II Streams: Yes

Silvicultural Prescription: Overstory Removal, Seedtree

Harvest System: Ground - Based

APPROXIMATE

ACREAGE:
279 acres

VOLUME:
3,515 MBF

Timber Sale Legal Description

Subsection	Section	Township	Range
SWSW	13	19N	01W
Pts. NE, Pts. E2NW, Pts. NESE	23	19N	01W
Pts. NW	24	19N	01W

Sale Name:

Paddy Pond Ton

Estimated Auction: Spring 2025

Location: 6 Miles Northeast of Donnelly, ID

Drainages: Paddy Creek

Class I Streams: No

Class II Streams: Yes

Silvicultural Prescription: Clearcut, ROW

Harvest System: Ground - Based, Prescriptive Yarding

APPROXIMATE

ACREAGE:
219 acres

VOLUME:
2,345 MBF

Timber Sale Legal Description

Subsection	Section	Township	Range
Pts. W2SW, Pts. SESW	28	17N	04E
Pts. SWNE, Pts. E2SW, Pts. W2SE	33	17N	04E
Pts. SW	34	17N	04E

IDAHO DEPARTMENT OF LANDS FISCAL YEAR 2025 TIMBER SALE PLAN

July 1, 2024 - June 30, 2025

**Payette Lakes
Supervisory Area**

Sale Name:

Round Ferry Ton

Estimated Auction: Summer 2024

Location: 2 Miles Northeast of Smiths Ferry, ID

Drainages: N. Fork Payette River, Round Valley Creek

Class I Streams: No

Class II Streams: Yes

Silvicultural Prescription: Overstory Removal, ROW, Seedtree

Harvest System: Ground - Based

APPROXIMATE

ACREAGE:
453 acres

VOLUME:
4,420 MBF

Timber Sale Legal Description

Subsection	Section	Township	Range
Pts. Gov. Lots 1-4, Pts. SWNE, Pts. S2NW, Pts. SW, Pts. W2SE	1	11N	03E
Pts. NENE	11	11N	03E
Pts. NWNW	12	11N	03E
Pts. E2SE	2	11N	03E

Supervisory Area Totals: Payette Lakes

Supervisory Area Acres: 2,495 acres
Supervisory Area Total Sawlog: 21,425 MBF

IDAHO DEPARTMENT OF LANDS FISCAL YEAR 2025 TIMBER SALE PLAN

July 1, 2024 - June 30, 2025

Southwest Supervisory Area

Sale Name:

Bannock Pine

Estimated Auction: Spring 2025

Location: 2 miles NW of Idaho City, ID

Drainages: Pine Creek

Class I Streams: No

Class II Streams: Yes

Silvicultural Prescription: Clearcut, ROW, Single Tree Select

Harvest System: Ground - Based

APPROXIMATE

ACREAGE:
945 acres

VOLUME:
7,100 MBF

Timber Sale Legal Description

Subsection	Section	Township	Range
Pts Gov Lots 2, 3, 4, 6, 7, 8	01	005N	005E
Pts Gov Lots 1, 3, 4, 5, 6, 7, Pts SWNE, Pts SENW	02	005N	005E
Pts NW, Pts N2SW, Pts SWSW	12	005N	005E
Pts S2NE, Pts NW, Pts N2SW, Pts N2SE, Pts SESE	13	005N	005E
Pts SWSE	35	006N	005E
Pts Gov Lots 1, 2, Pts N2NE, Pts SWNE, Pts SENW, Pts NWSE, Pts S2SE, SENE, SWNW,	36	006N	005E

Sale Name:

Upper Deer

Estimated Auction: Fall 2024

Location: 4 miles SE of Banks, ID

Drainages: Deer Creek

Class I Streams: No

Class II Streams: Yes

Silvicultural Prescription: Clearcut, ROW, Seedtree, Single Tree Select

Harvest System: Ground - Based

APPROXIMATE

ACREAGE:
1,111 acres

VOLUME:
8,900 MBF

Timber Sale Legal Description

Subsection	Section	Township	Range
Pts SWNE, Pts SW, W2SE	01	008N	003E
E2SE, Pts NE, Pts SENW, Pts NESW, Pts W2SE	11	008N	003E
Pts N2NW, Pts SWNW, Pts W2SW, W2NE, SENW, E2SW, W2SE	12	008N	003E
E2NW, Pts NWNE, Pts W2NW	13	008N	003E
E2NE, Pts W2NE	14	008N	003E

Supervisory Area Totals: Southwest

Supervisory Area Acres: 2,056 acres
Supervisory Area Total Sawlog: 16,000 MBF

IDAHO DEPARTMENT OF LANDS FISCAL YEAR 2025 TIMBER SALE PLAN

July 1, 2024 - June 30, 2025

Eastern Idaho Supervisory Area

Sale Name:

Thompson Creek Ton

Estimated Auction: Spring 2025

Location: 30 Miles N of Soda Springs

Drainages: Thompson Creek

Class I Streams: Unk

Class II Streams: Unk

Silvicultural Prescription: Shelterwood

Harvest System: Ground - Based

APPROXIMATE

ACREAGE:
1,335 acres

VOLUME:
8,000 MBF

Timber Sale Legal Description

Subsection	Section	Township	Range
Pts N2NE, Pts SWNE, Pts NWNW, Pts S2NW, Pts SW, Pts S2SE, SENE, N2SE	20	006S	040E
Pts SWNE, Pts N2NW, Pts SENW, Pts N2SE, Pts SESE, SWNW, SW, SWSE	21	006S	040E
Pts SWSW	22	006S	040E
Pts NW, Pts E2SW, Pts W2SE, W2SW	27	006S	040E
NWNE, S2NE, E2NW, NESW, N2SE, Pts NENE, Pts W2NW, Pts NWSW, Pts S2SW, Pts S2SE	28	006S	040E
Pts N2NW	34	006S	040E

Supervisory Area Totals: Eastern Idaho

Supervisory Area Acres: 1,335 acres
Supervisory Area Total Sawlog: 8,000 MBF

Statewide Totals

Grand Total Acres: 25,378 acres
Grand Total Sawlog: 334,362 MBF
Grand Total Cedar Poles: 22,965 Cedar Poles