



IDAHO DEPARTMENT OF LANDS

Coeur d'Alene, Idaho

Signed this 27th day of August 2024

RESCINDING ORDER

The Stage 1 Fire Restrictions invoked under authority of Section 38-115 Idaho Code, and the Rules and Regulations pertaining to Forest Fire Protection are hereby rescinded on all state and private forest and range lands within the area of the State of Idaho herein described below.

**Payette Dispatch Area/ Fire Restrictions Area: ALL
PAYETTE FIRE RESTRICTIONS AREA**

The Payette fire restrictions area corresponds with the Payette Dispatch Area. Within the Payette fire restrictions area options for managing restrictions also include:

Snake/ Weiser River Fire Restrictions Zone

All state, private and BLM lands east of the Snake River, north and west of Highway 95 to the Little Weiser River, and north of the Little Weiser River to the Payette NF boundary. The boundary then follows the Payette NF boundary back to the Snake River.

Payette NF West Fire Restrictions Zone

All Payette National Forest lands west of Highway 95, south of New Meadows, and west of Cascade Lake, including all BLM, state, and private lands within the Payette National Forest boundary.

Long Valley/ Meadows Valley Fire Restrictions Zone

All BLM, state, and private lands located within the following boundary description which includes all lands within Meadows Valley and Long Valley, Idaho. The northern boundary begins at the junction of Forest Service Road 074 and Highway 95. It runs due east along the BLM/state land boundary to the Payette National Forest boundary. Here it turns south following the Payette NF boundary through Meadows Valley to Long Valley until its junction with the Boise NF. The zone restriction line continues following the Boise NF boundary south until reaching a point due east of Highway 55, mile marker 84.5. It then turns west traveling through state land until joining again with the Boise NF boundary on the west side of Highway 55. Here the restriction boundary line turns north once again following the Boise NF border. The line turns west along the Boise NF border at T10N R3E Section 33 through Section 32. The boundary line turns north at the southwest corner of Section 32 and travels north through private land until it reaches the northwest corner of section 32. At this point it once again follows the Boise NF border northward until reaching the Payette/Boise NF boundaries. The zone boundary line continues north following the Payette NF Forest boundary through Long Valley to Meadows Valley until arriving back at the point of origin at the junction of Forest Service Road 074 and Highway 95.

Little Salmon River Fire Restrictions Zone

All state, private, and BLM lands contained within the following boundary description. The southern boundary begins at the junction of Forest Service Road 074 and Highway 95. It runs west to the Payette National Forest boundary. The boundary then runs north

following the Payette National Forest line to north edge of T22N R1E Section 9 where it turns east to Highway 95. The boundary then follows Highway 95 north to its junction with the Main Salmon River and follows the river east to the Payette National Forest boundary. At this point the line turns south and follows the Payette National Forest line south until due east of Forest Service Road 074, where it turns west at the south edge of T5N, R1E, Section 25 to its junction with Highway 95.

Payette NF East Fire Restrictions Zone

All Payette National Forest lands east of Highway 95, including all state and private lands within the Payette National Forest boundary and excluding the Frank Church River of No Return.

For a detailed map, showing all Idaho Fire Restriction Areas, visit: <https://www.idl.idaho.gov/fire-management/fire-restrictions-finder>

This rescinding order is effective 0001 Friday August 30, 2024.

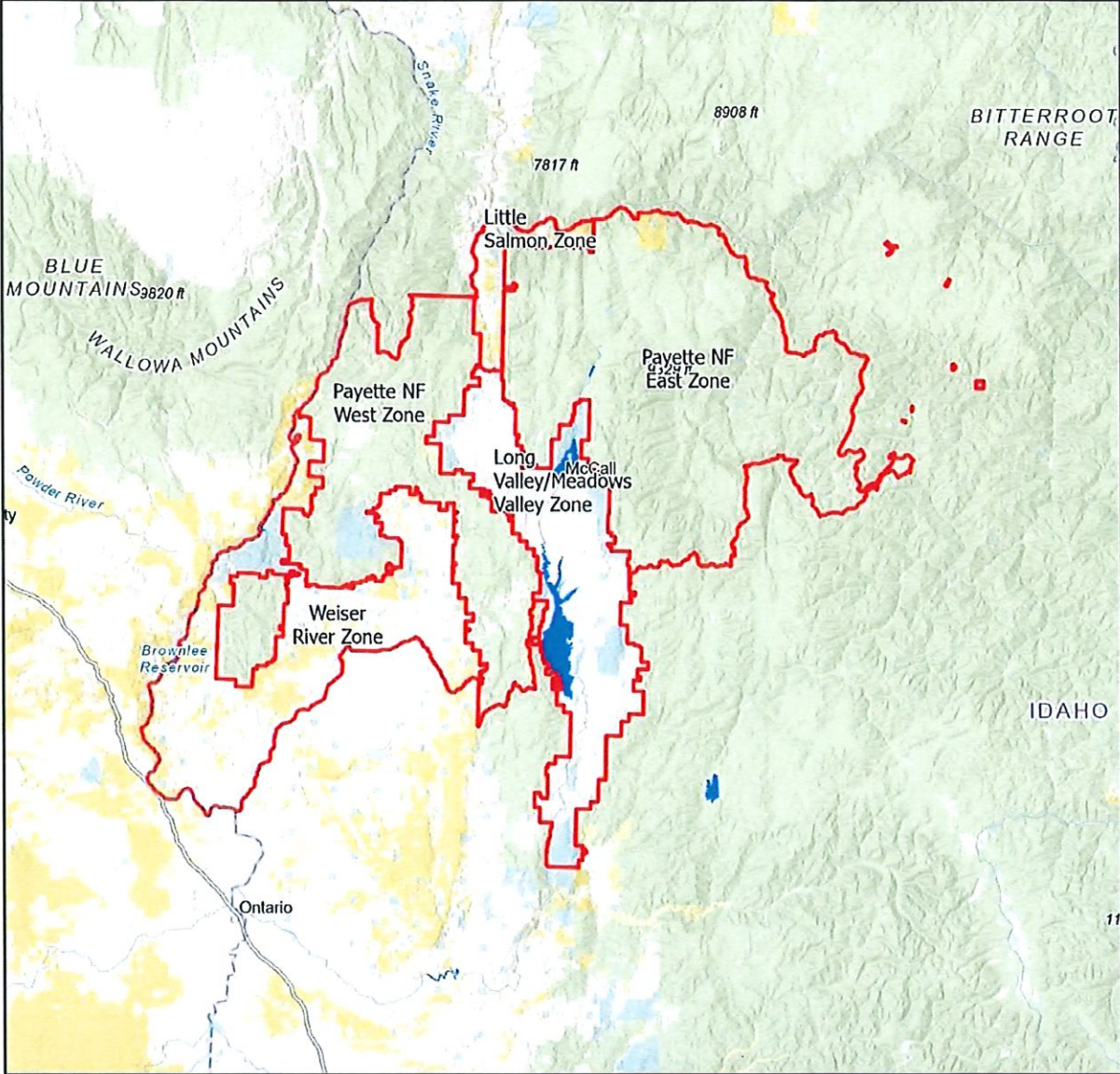


Craig Foss, State Forester
Idaho Department of Lands

Signed in Coeur d'Alene, Idaho this 27th day of August, 2024

Payette

Fire Restriction Areas



Date Created:
05/18/2022

The surface management status should be used as a general guide only. Official lands records at the Bureau of Land Management (BLM) and other State and County offices should be checked for up-to-date information regarding any specific tract of lands.

No warranty is made by the Idaho Department of Lands (IDL) as to the accuracy, reliability, or completeness of these datasets for individual use or aggregation with other datasets.

Spatial Reference
Name: WGS 1984 Web Mercator Auxiliary Sphere

