

The Boise Front Focal Area



A PARTNER-BASED
IMPLEMENTATION
STRATEGY

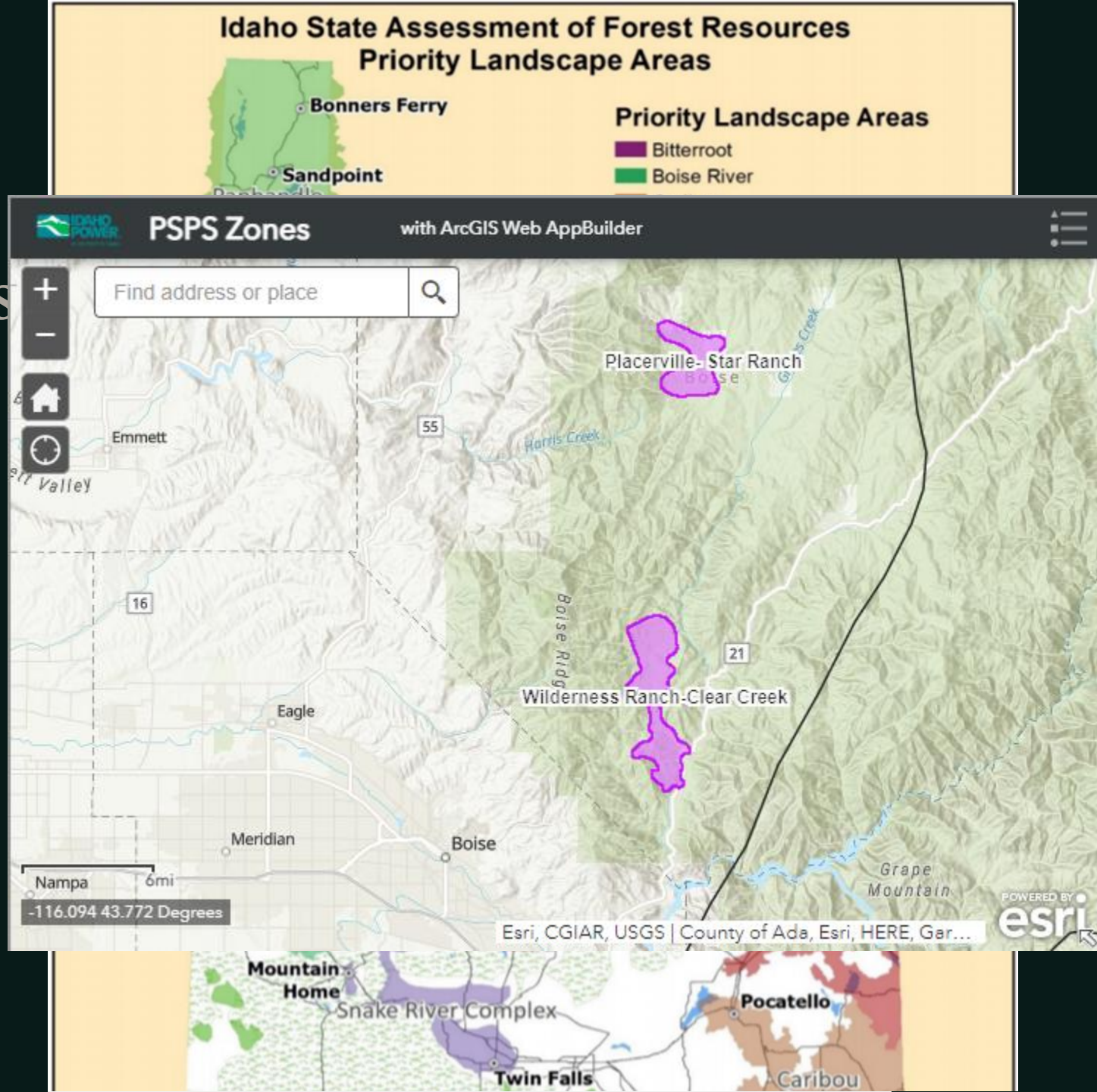


Background

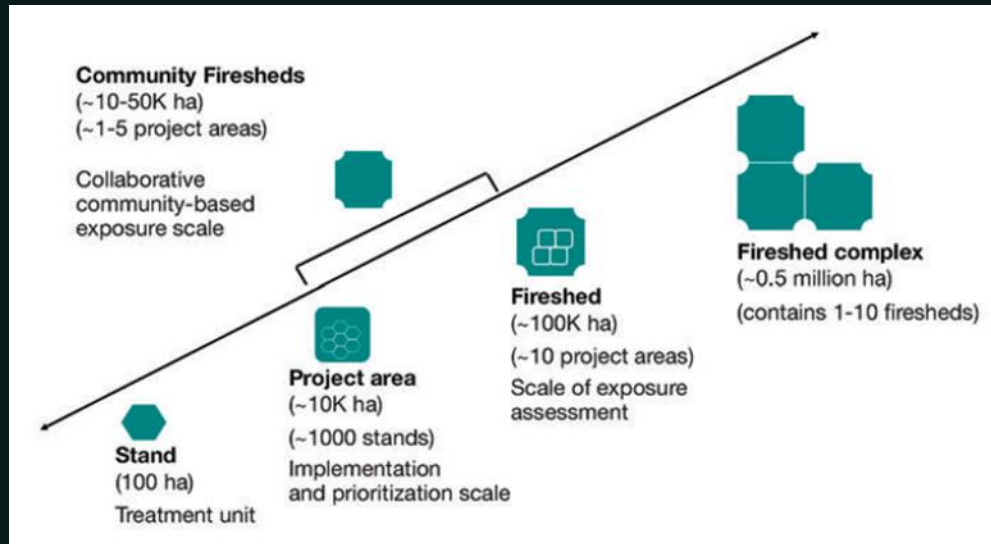
- Original Joint Chiefs' Landscape Restoration Partnership
- Evolved to Partner-Based Implementation Strategy
- Building on partnerships and work done to date in high priority complex landscape



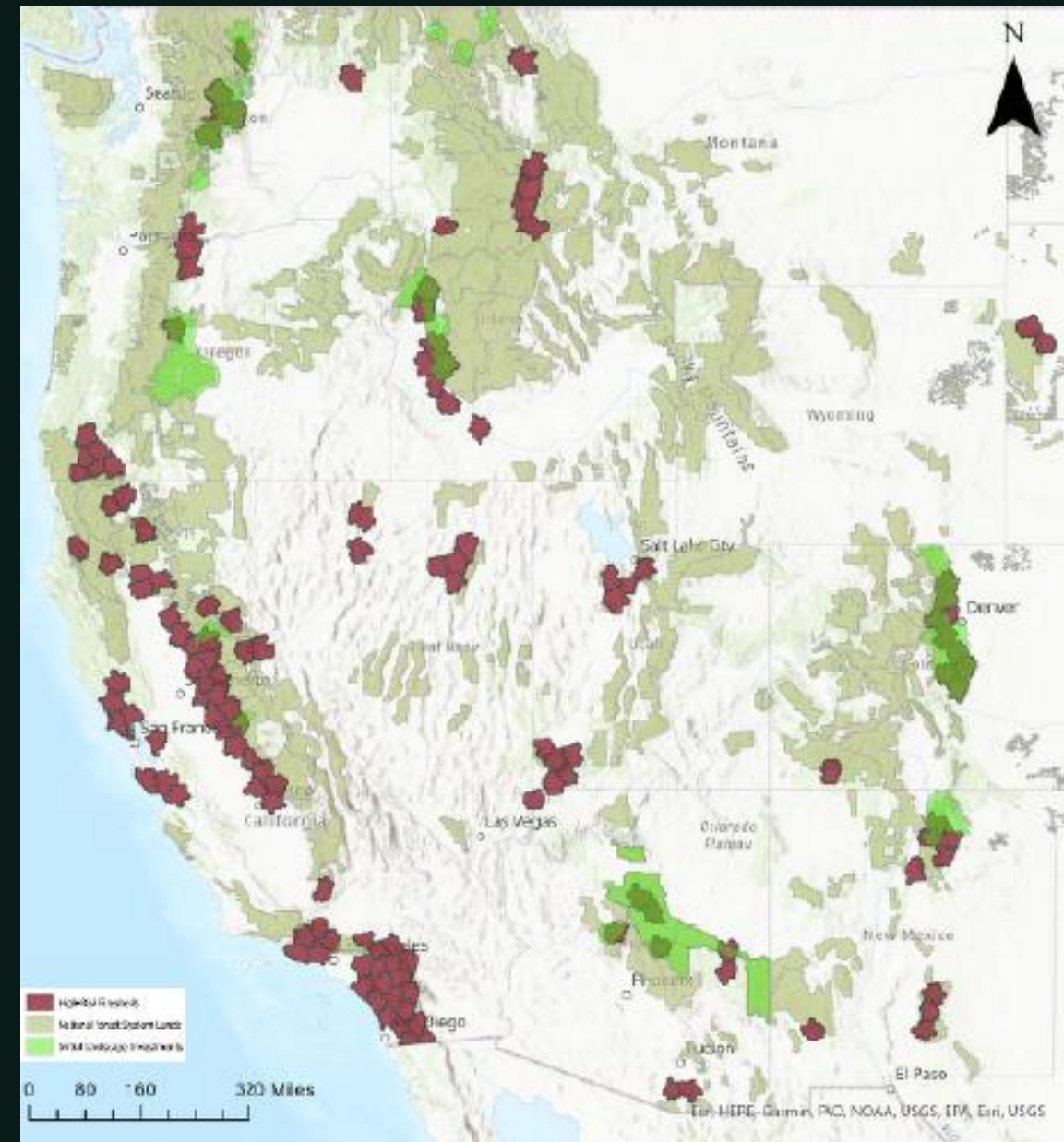
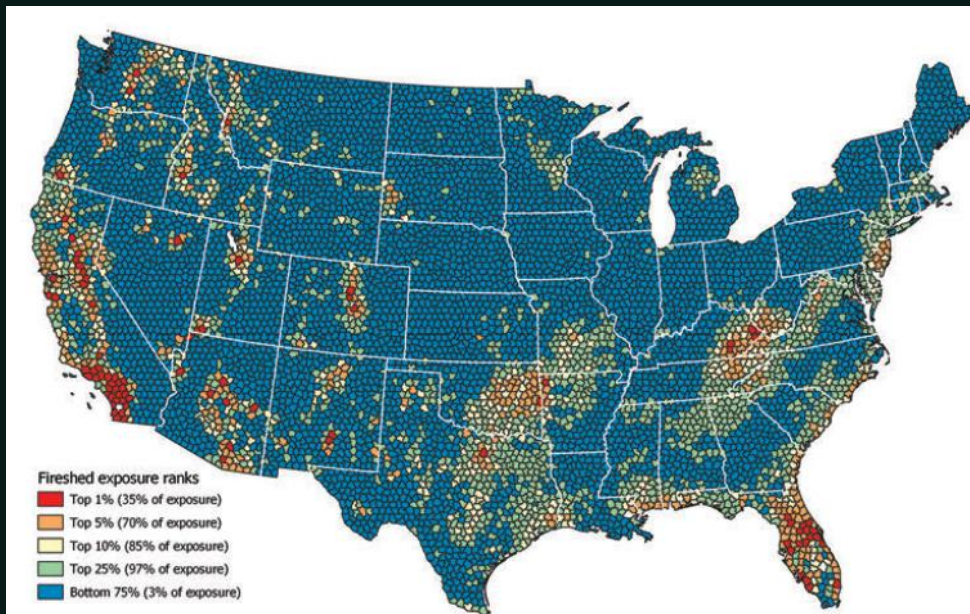
Background – Priority Landscapes



Background – why here, why now

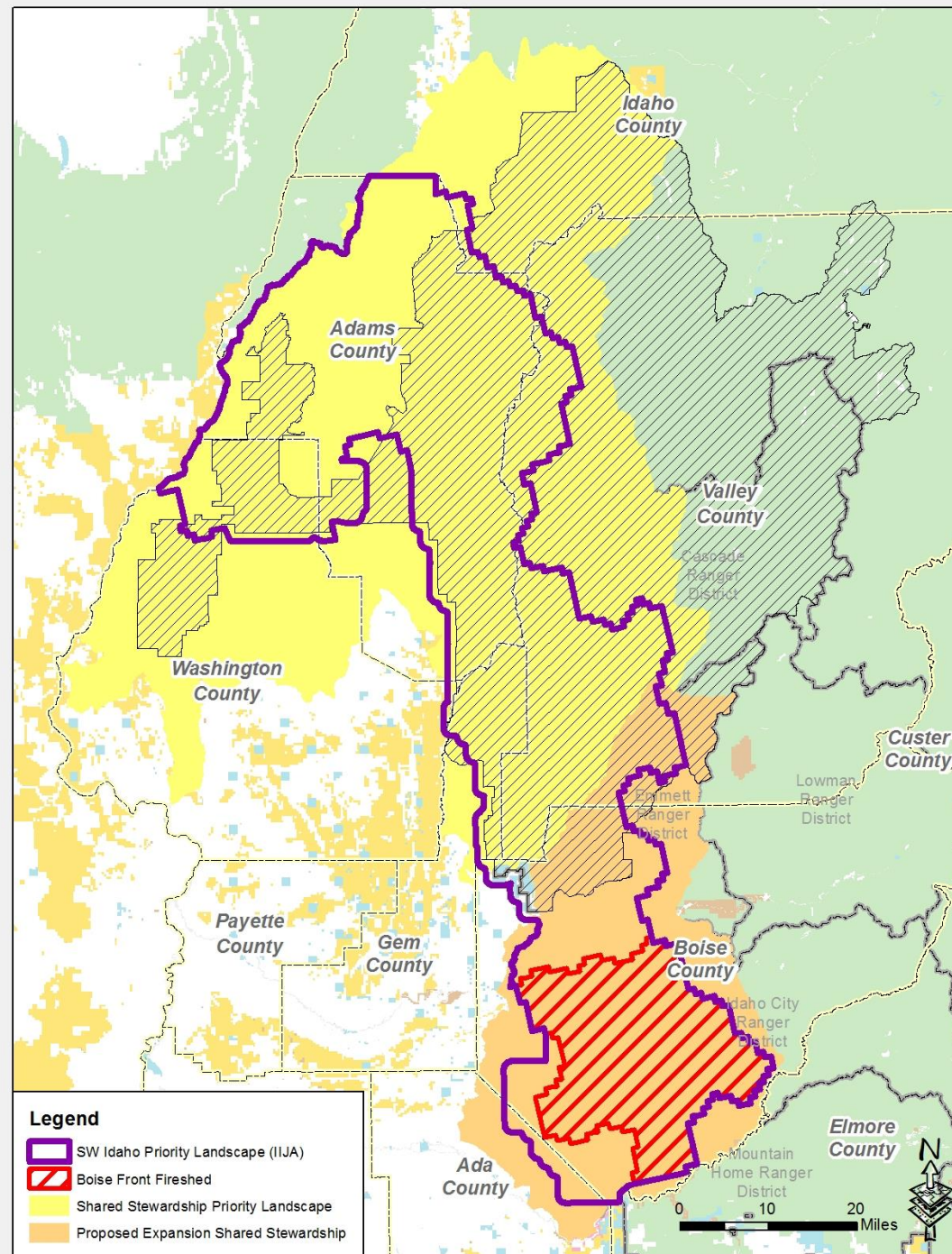


Scope & Scale



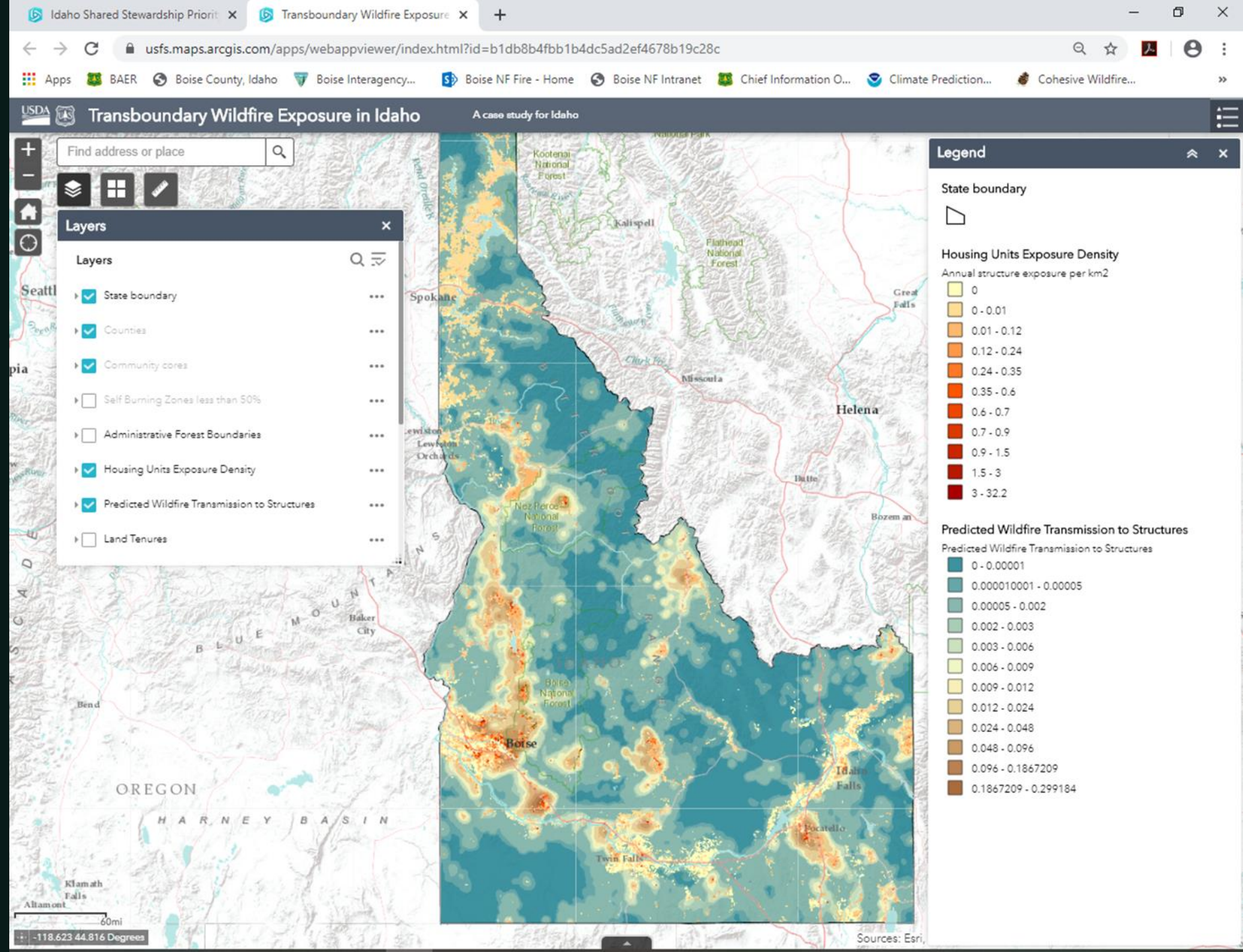
Why Here, Why Now

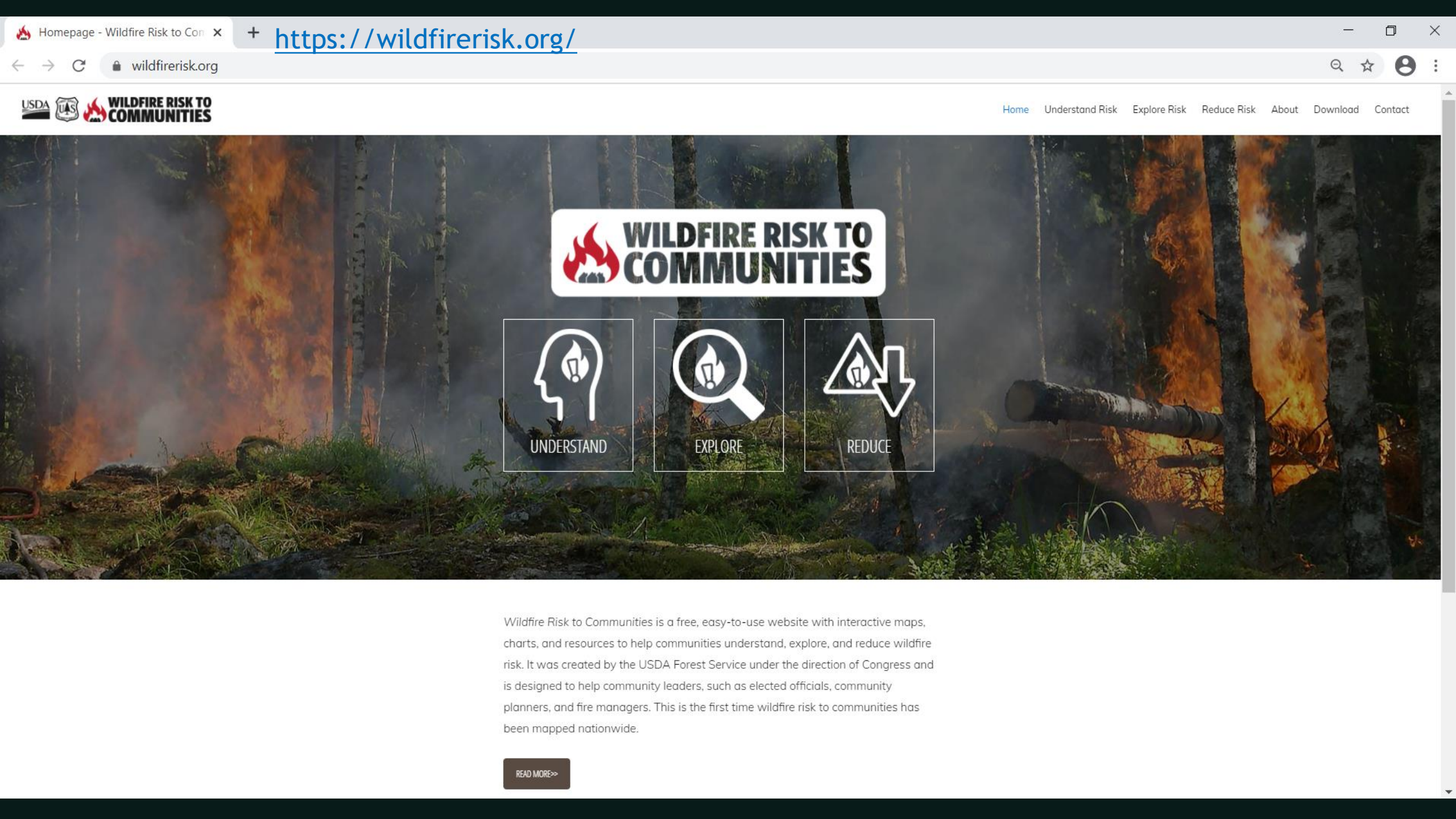
Context



Why Here, Why Now

Science-based, data driven process





WILDFIRE RISK TO COMMUNITIES



UNDERSTAND



EXPLORE

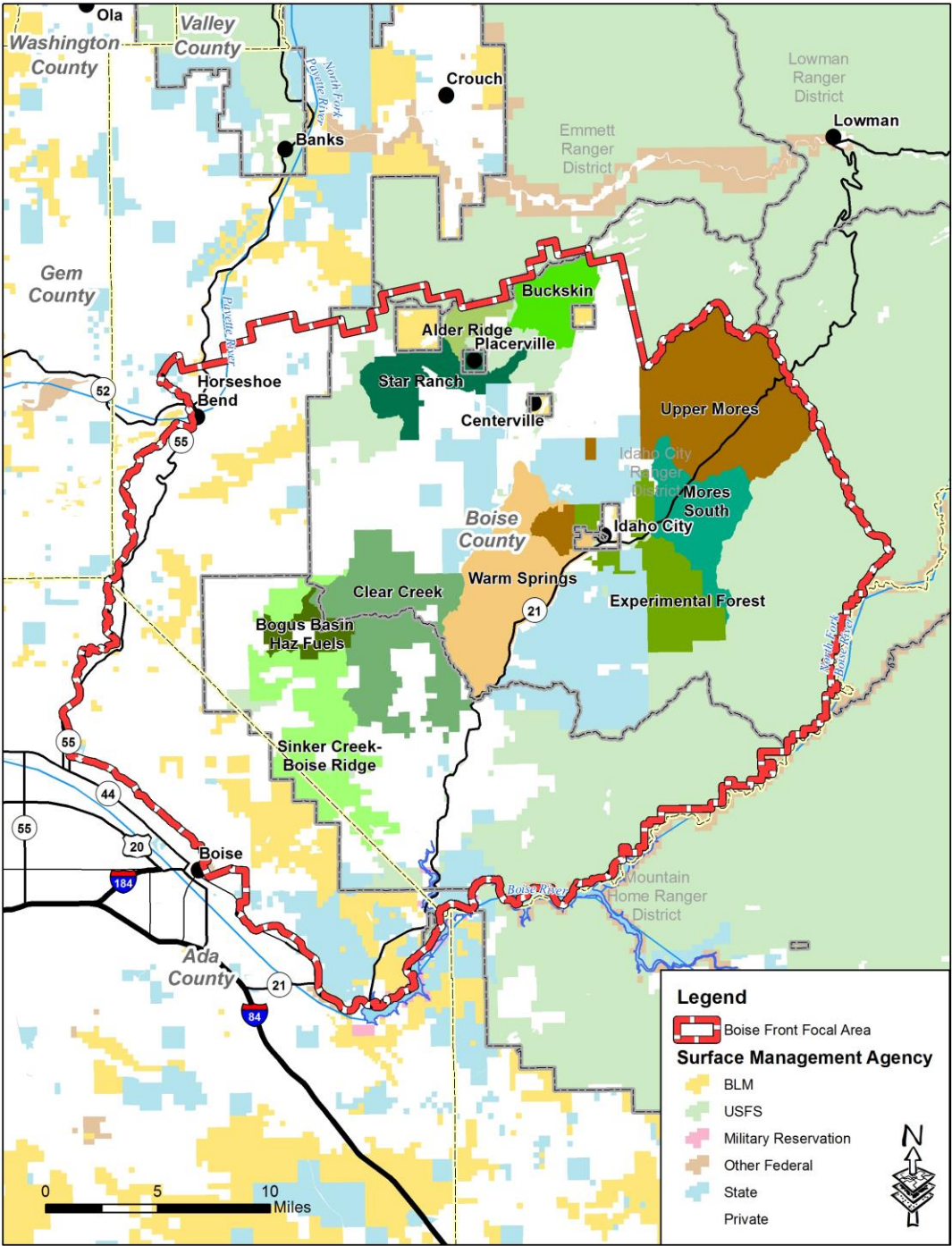


REDUCE

Wildfire Risk to Communities is a free, easy-to-use website with interactive maps, charts, and resources to help communities understand, explore, and reduce wildfire risk. It was created by the USDA Forest Service under the direction of Congress and is designed to help community leaders, such as elected officials, community planners, and fire managers. This is the first time wildfire risk to communities has been mapped nationwide.

READ MORE>>

Scope & Scale



Assess Opportunity

II. Opportunity Criteria: [33.8%, 33.8%]

Feasibility: [31.3%, 10.6%]

Feasibility

Partnership Catalyst: [18.8%, 6.4%]

**Partnership
Catalyst**

Social License: [12.8%, 4.3%]

**Social
License**

Opportunity for Scale: [12.1%, 4.1%]

**Landscape
Scale**

Funding: [13.8%, 4.7%]

Funding

Shovel-Ready Status: [11.2%, 3.8%]

Shovel-Ready

We need to
assess where
we can work
now and in the
future

Where are we now?

Engaging partners and stakeholders to build agreement about restoration needs, goals, and approaches. Develop common vision and understanding of the landscape with a landscape assessment, restoration strategy and communication & education plan.

- Building off successes from other parts of the country; 10-year stewardship agreement between USFS/NFF
- USFS Enterprise GIS Team
- Fire Modeling Institute
- Commitment from partners for both in-kind and cash contributions



Partners

Boise County Firefighters Association
Boise County
National Forest Foundation
Idaho Department of Lands
USDA Forest Service
City of Boise
Natural Resource Conservation Service
Bureau of Land Management
Idaho Power

Idaho Power
Governor's Office of Species Conservation
Squaw Creek Soil Conservation District
Boise Forest Coalition
Congressional Staffers
Rocky Mountain Research Institute
Fire ADAdapted Community Partnership
The Nature Conservancy
Keystone Concept



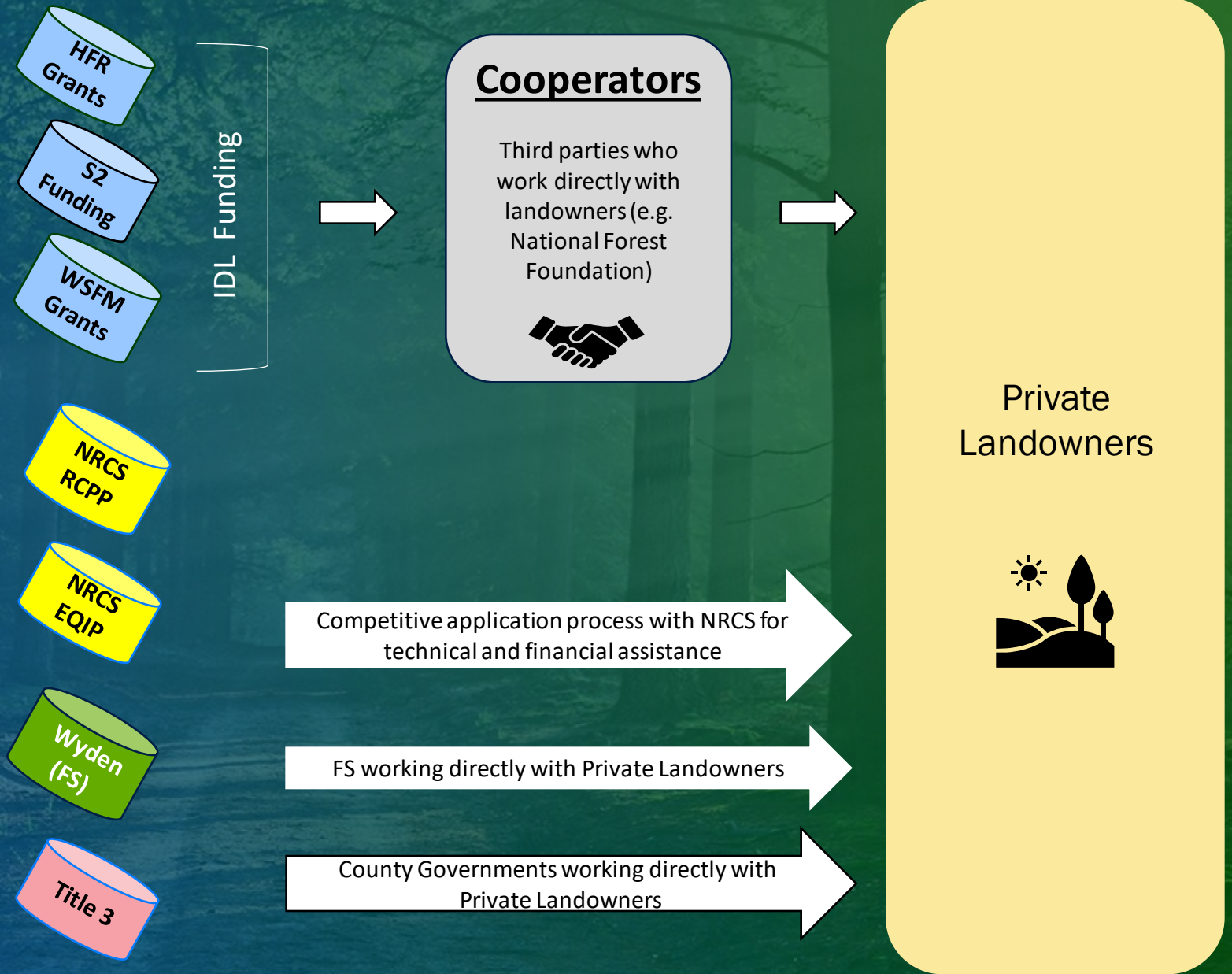
Funding Opportunities for Private Landowners in the Boise Front

A “fiscal agent” cooperators, such as the National Forest Foundation, can improve efficiencies by combining contract acres for multiple ownerships.

Each program has different financial requirements for participating in these funding opportunities.

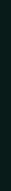
Funding opportunities may require private landowners to provide either:

- \$\$\$ Match
- Soft Match (landowner contributions)
- and/or \$\$\$ Reimbursement





Questions





Wildland Fire Operations

Increasing The Pace And Scale Of Prescribed Fire

Good Fire, Good Jobs

Our operations team are skilled and experienced wildland and prescribed fire practitioners dedicated to increasing the pace and scale of prescribed fire. Our program includes a self-sufficient ten-person hand crew, qualified prescribed fire and wildland fire managers, multiple wildland engines and UTV's, a equipment cache, and technology assets to implement fire management projects.

With our breadth of experience, we can tackle a wide-range of projects such performing fuels reductions in the wildland-urban interface, implementing collaborative prescribed fires, or even hosting national Prescribed Fire Training Exchange events.