



Natural Resources
Conservation Service
U.S. DEPARTMENT OF AGRICULTURE



#NOBOUNDARIESFORESTRY

Idaho Shared Stewardship Progress *Cross-Boundary Cooperation*

Ara Andrea
Idaho S² Coordinator
IDL

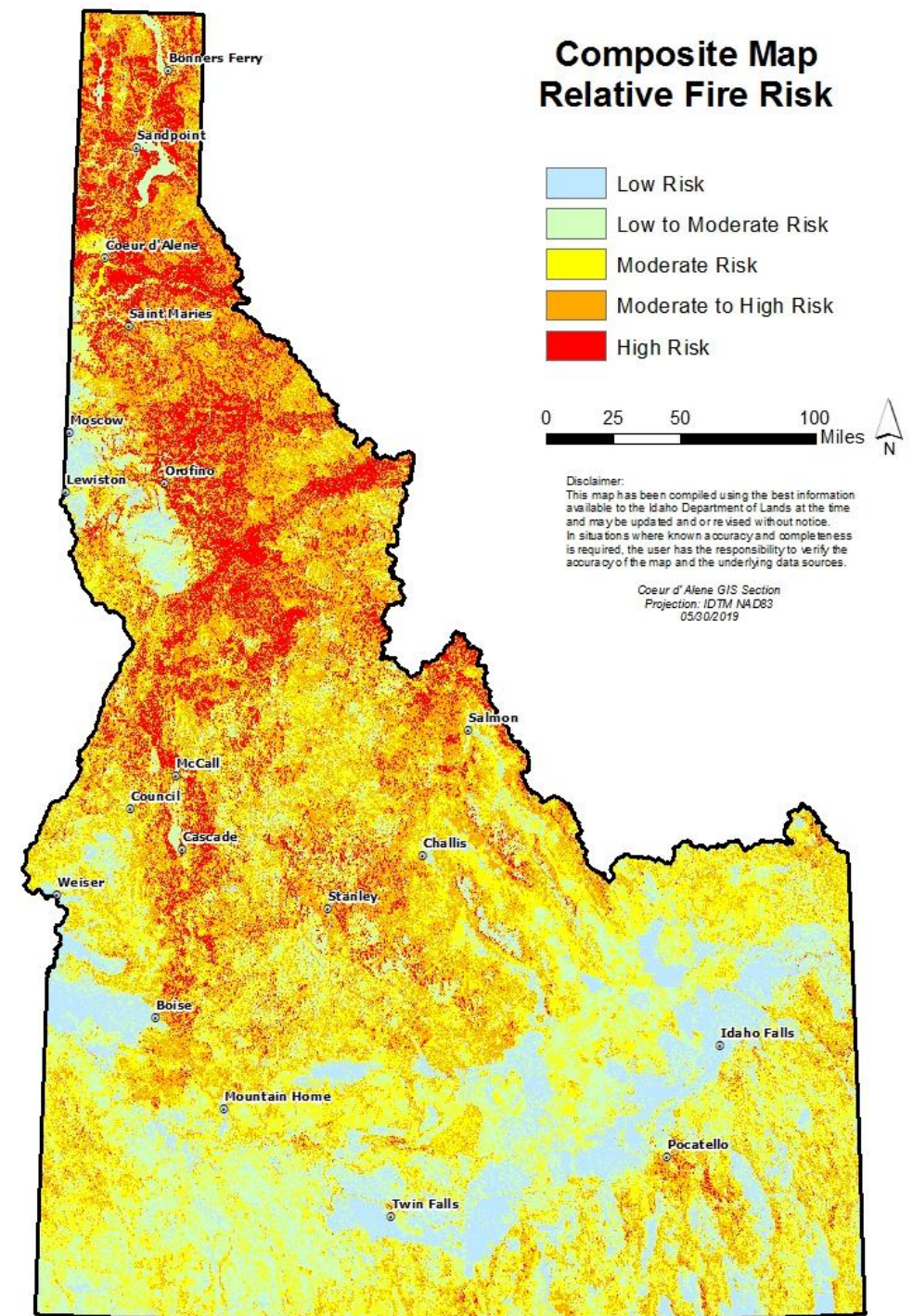
Jeff Lau
N-Idaho S² Coord.
Idaho Panhandle N. F.

Brian Davis
S-Idaho S² Coord.
Payette N. F.

IDAHO SHARED STEWARDSHIP

The origins of Idaho's Shared Stewardship Initiative:

- *Shared Stewardship Master Agreement signed in 2018*
- *All-Hands-All-Lands, interagency collaborative approach to actively managing forest treatments*
- *Increasing pace and scale of fuels-reduction treatments on federal, state, private and tribal forestlands*

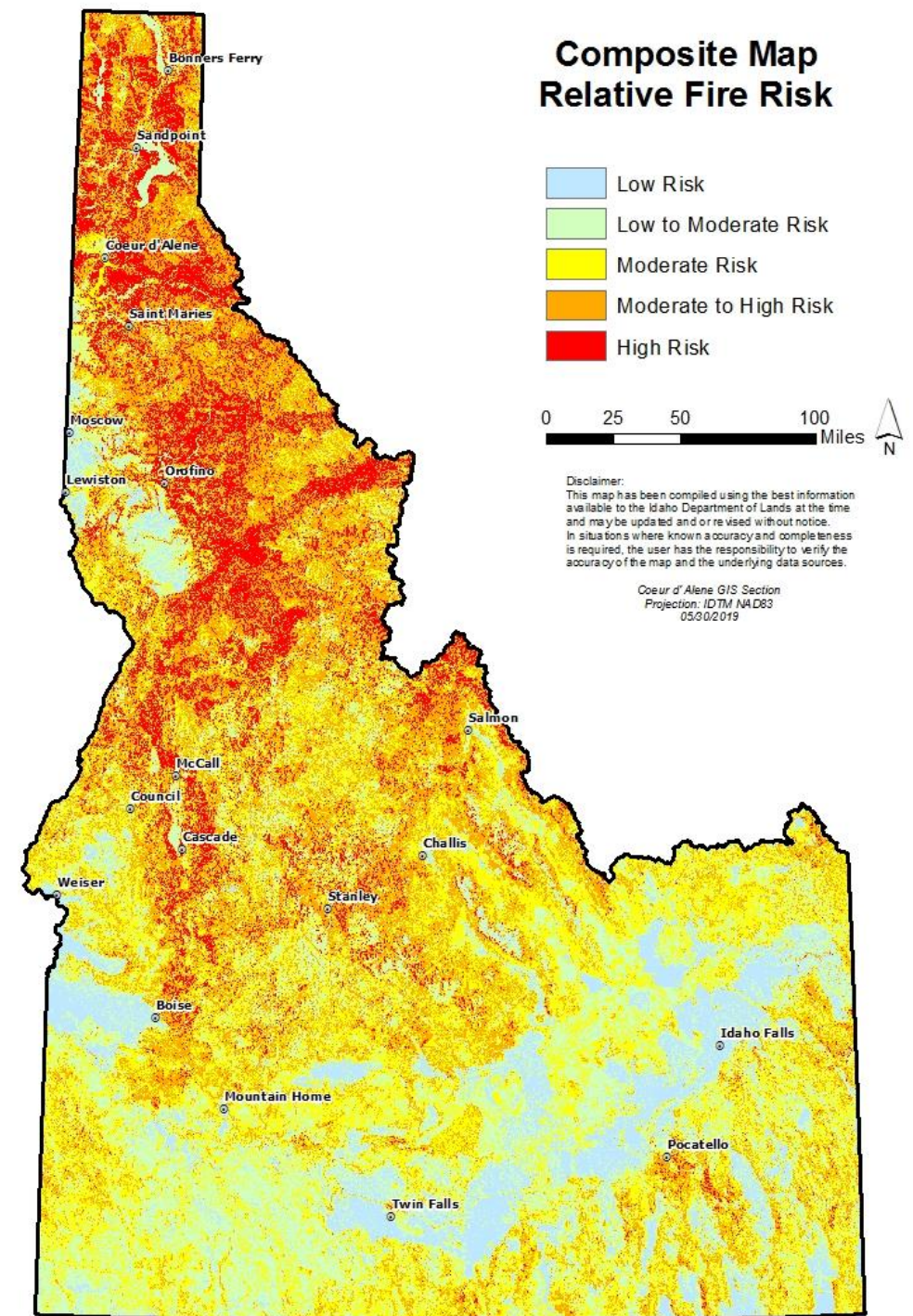


IDAHO SHARED STEWARDSHIP

The origins of Idaho's Shared Stewardship Initiative:

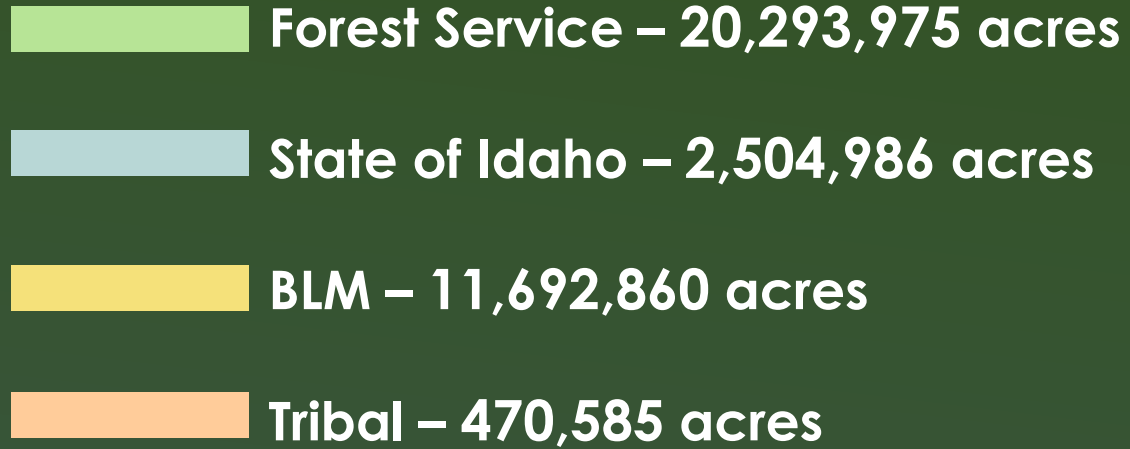
Shared Stewardship Agreement Goals

- **By 2025:**
 - Partners will work to double the annual acres treated on Idaho's National Forests
 - Partners will work to promote cross-boundary work (treatments) on other lands within priority landscapes

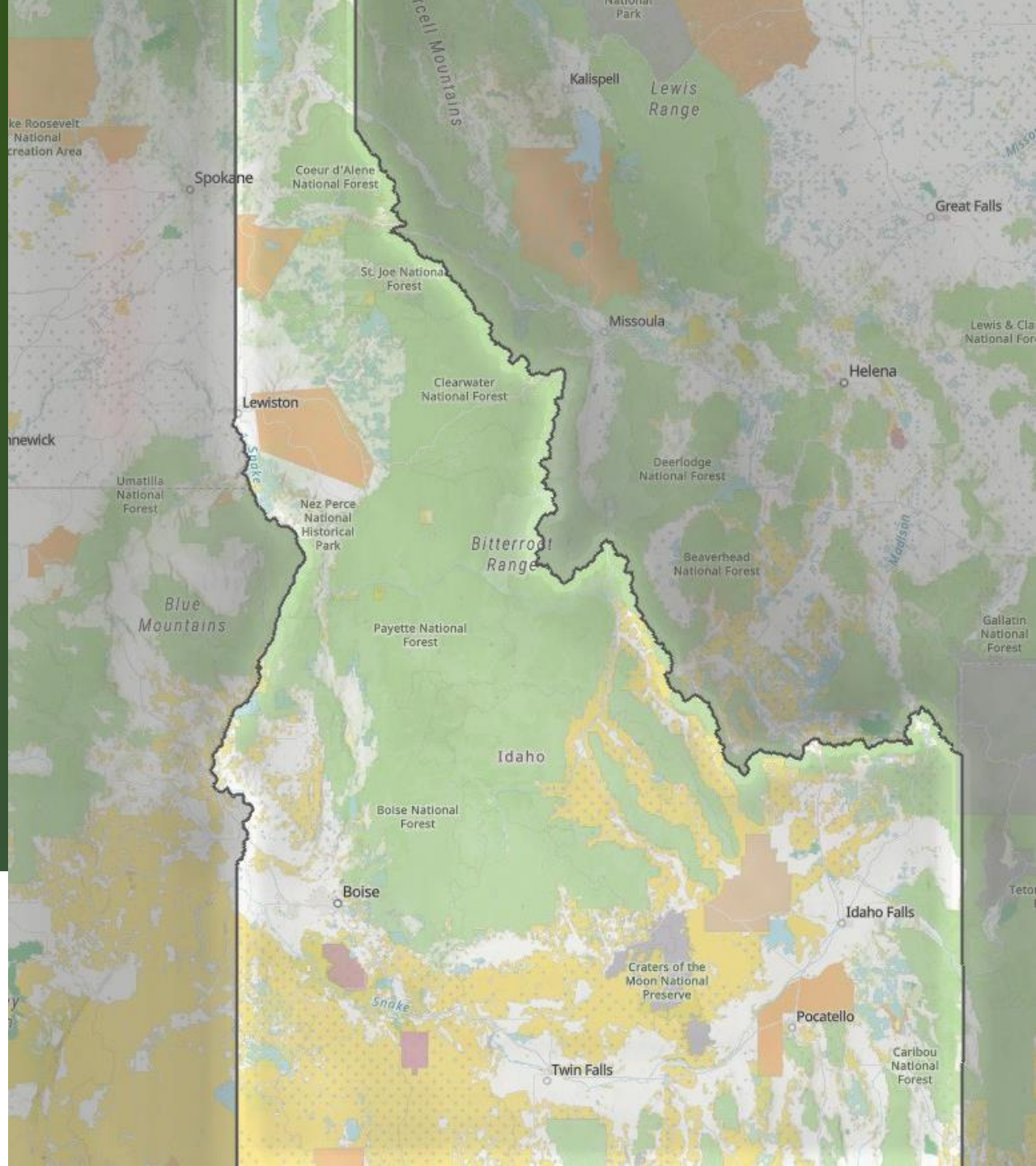


IDAHO SHARED STEWARDSHIP

Idaho Ownership



Natural Resources
Conservation Service
U.S. DEPARTMENT OF AGRICULTURE

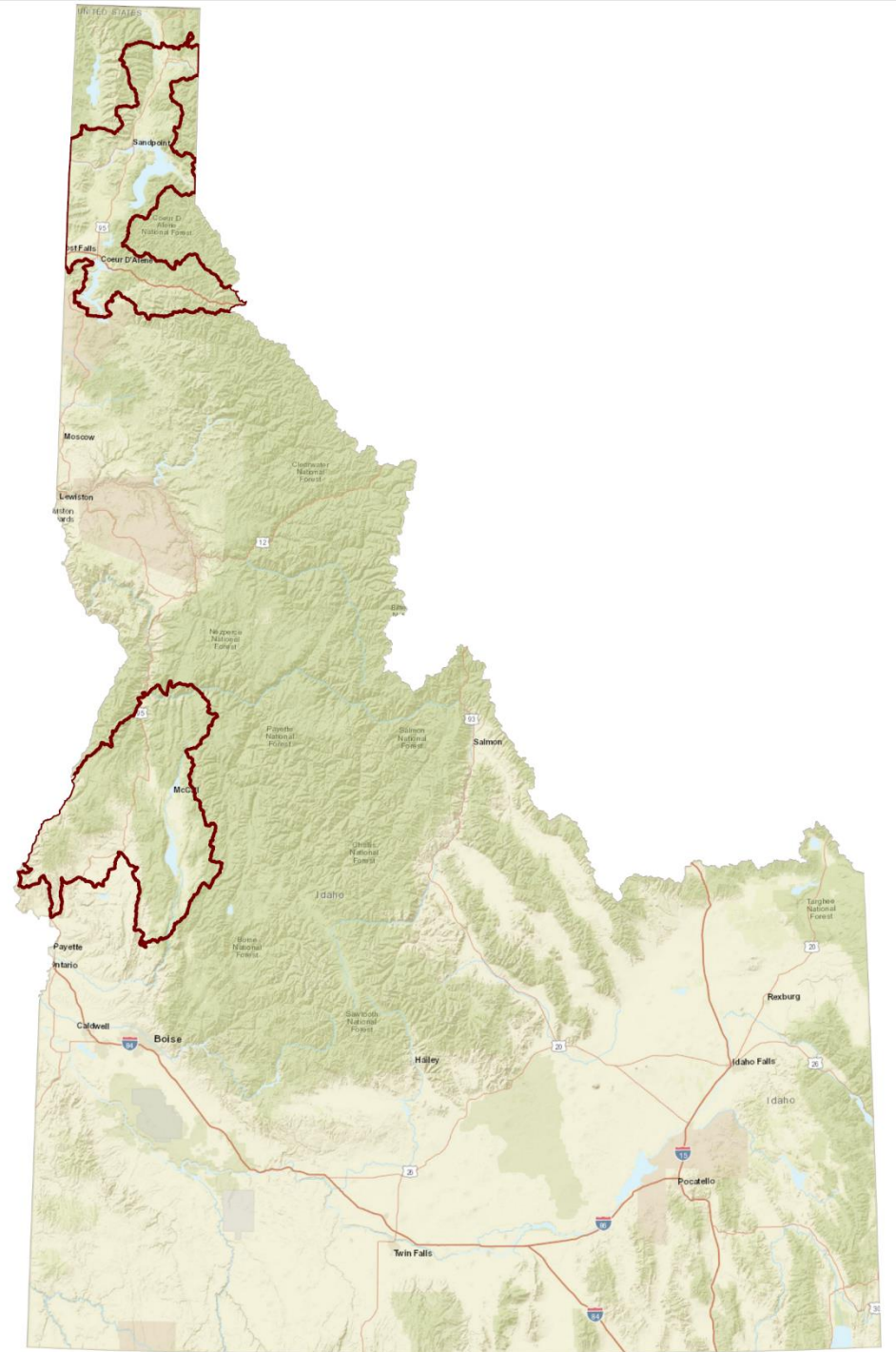


IDAHO SHARED STEWARDSHIP

Shared Stewardship *Original Priority Landscapes*

*Designated and Drawn by the IDL
State Forester and USDA Region 1 and
Region 4 Foresters in 2019*

*as directed by the 2018 Shared
Stewardship Agreement*

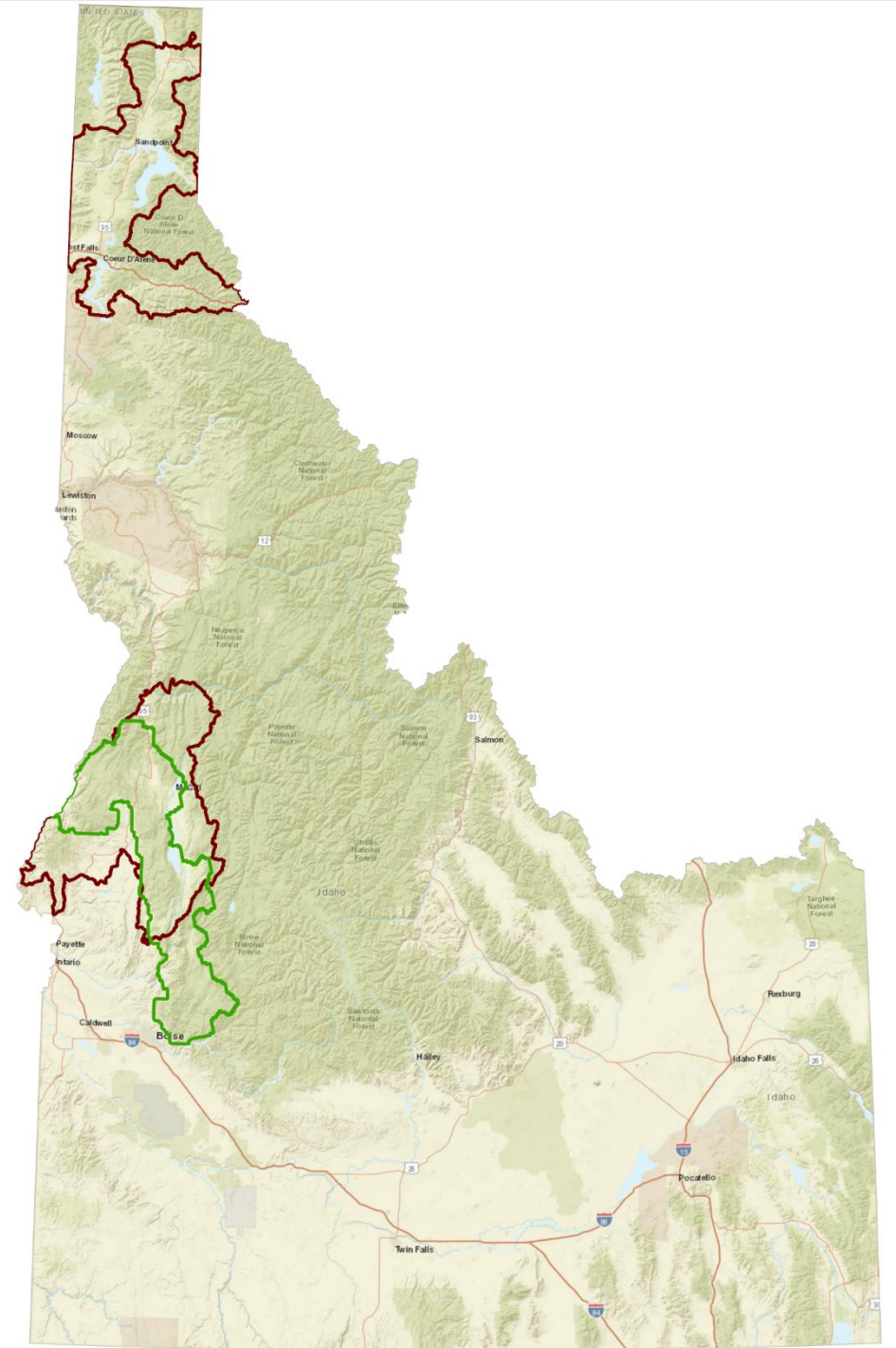


IDAHO SHARED STEWARDSHIP

Current Boundary of South-Idaho Shared Stewardship Priority Landscape with overlaid USDA- designated Southwest Idaho Landscape (SIL)

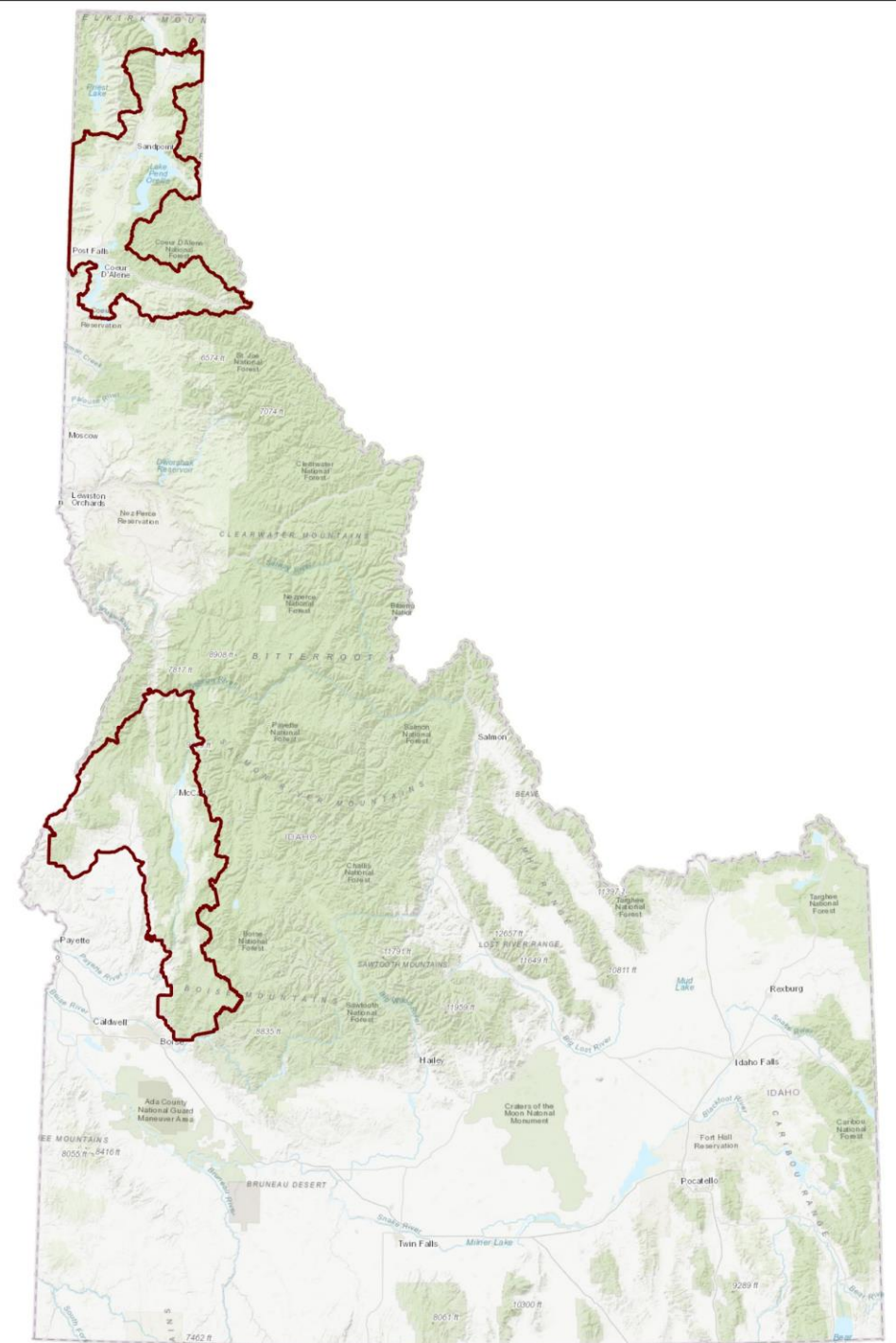
*SIL designated by the USDA as part of the
Wildfire Crisis Strategy*

*One of the first initial-investment landscape
designations*



IDAHO SHARED STEWARDSHIP

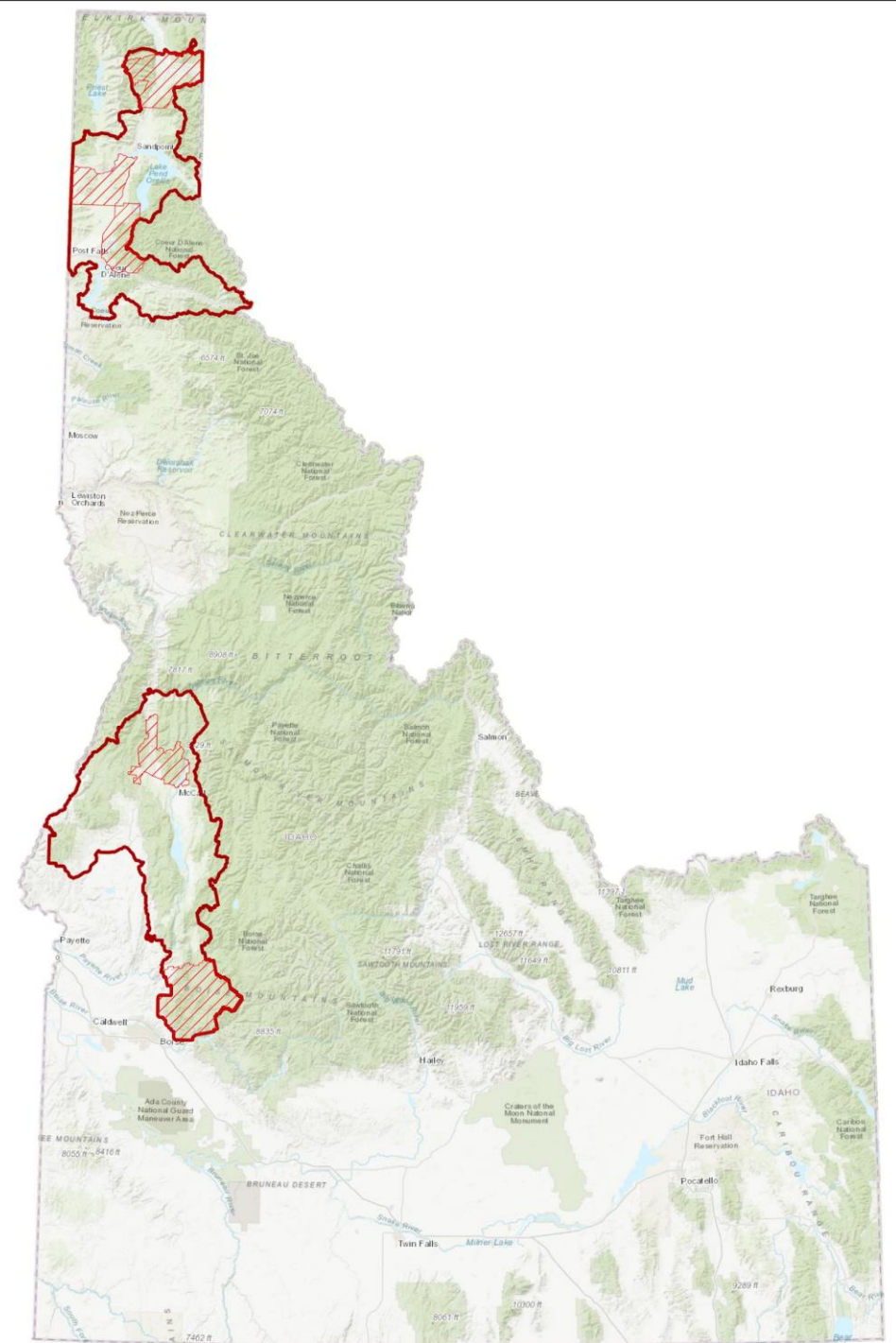
Shared Stewardship *New Priority Landscapes*



IDAHO SHARED STEWARDSHIP

Shared Stewardship *New Priority Landscapes*

Focal Areas



IDAHO SHARED STEWARDSHIP

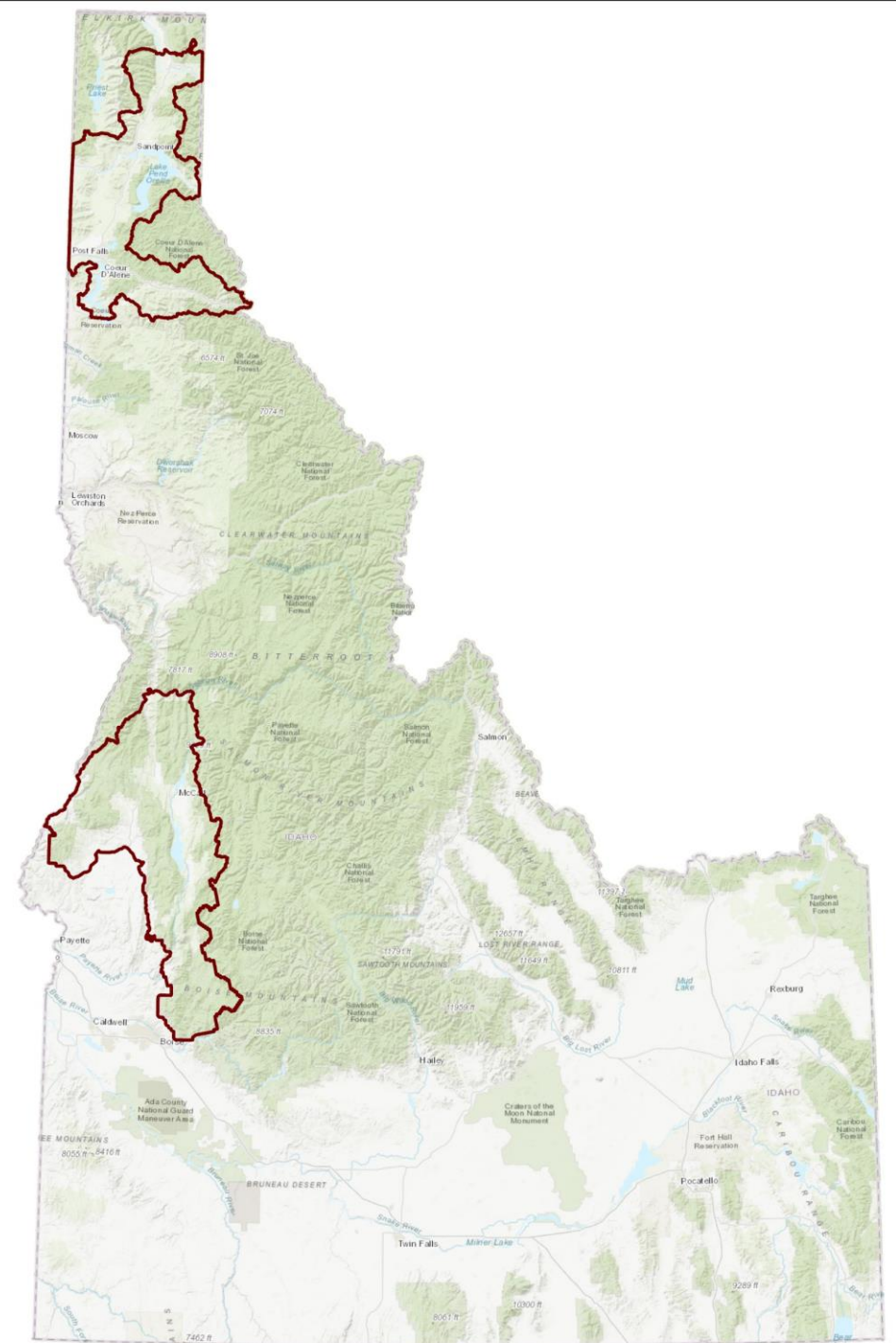
STATEWIDE PROGRESS

WITHIN S² PRIORITY LANDSCAPES

Acres Treated on
3 National Forests: 53,675

Acres Treated on
State Trust Lands: 10,703

Acres Treated on
Non-industrial Private: 1,994



IDAHO SHARED STEWARDSHIP

STATEWIDE PROGRESS

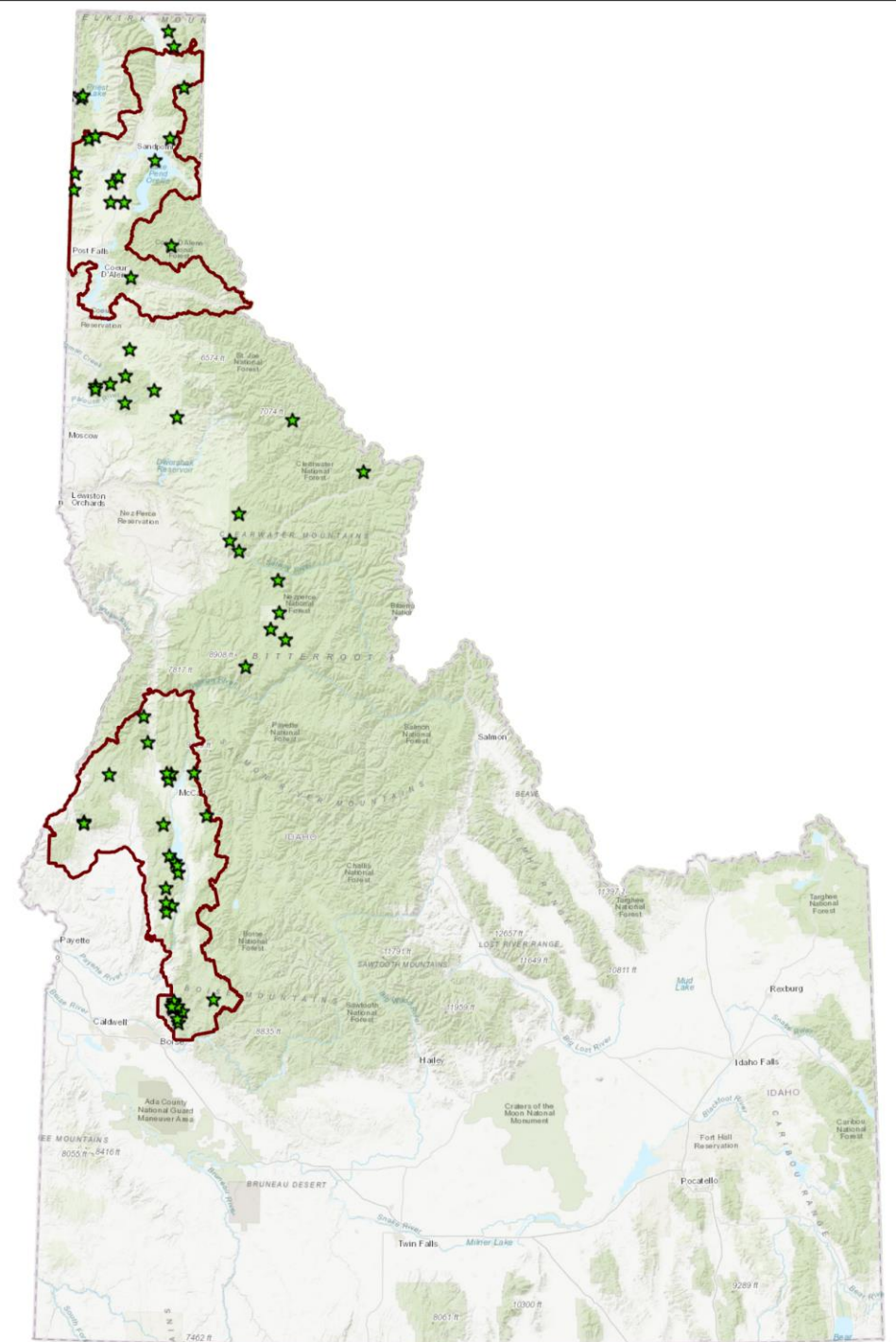
WITHIN S² PRIORITY LANDSCAPES

Acres Treated on

3 National Forests: 53,675

Acres on 3 National Forests

Administered by **IDL GNA** Foresters: 3,313

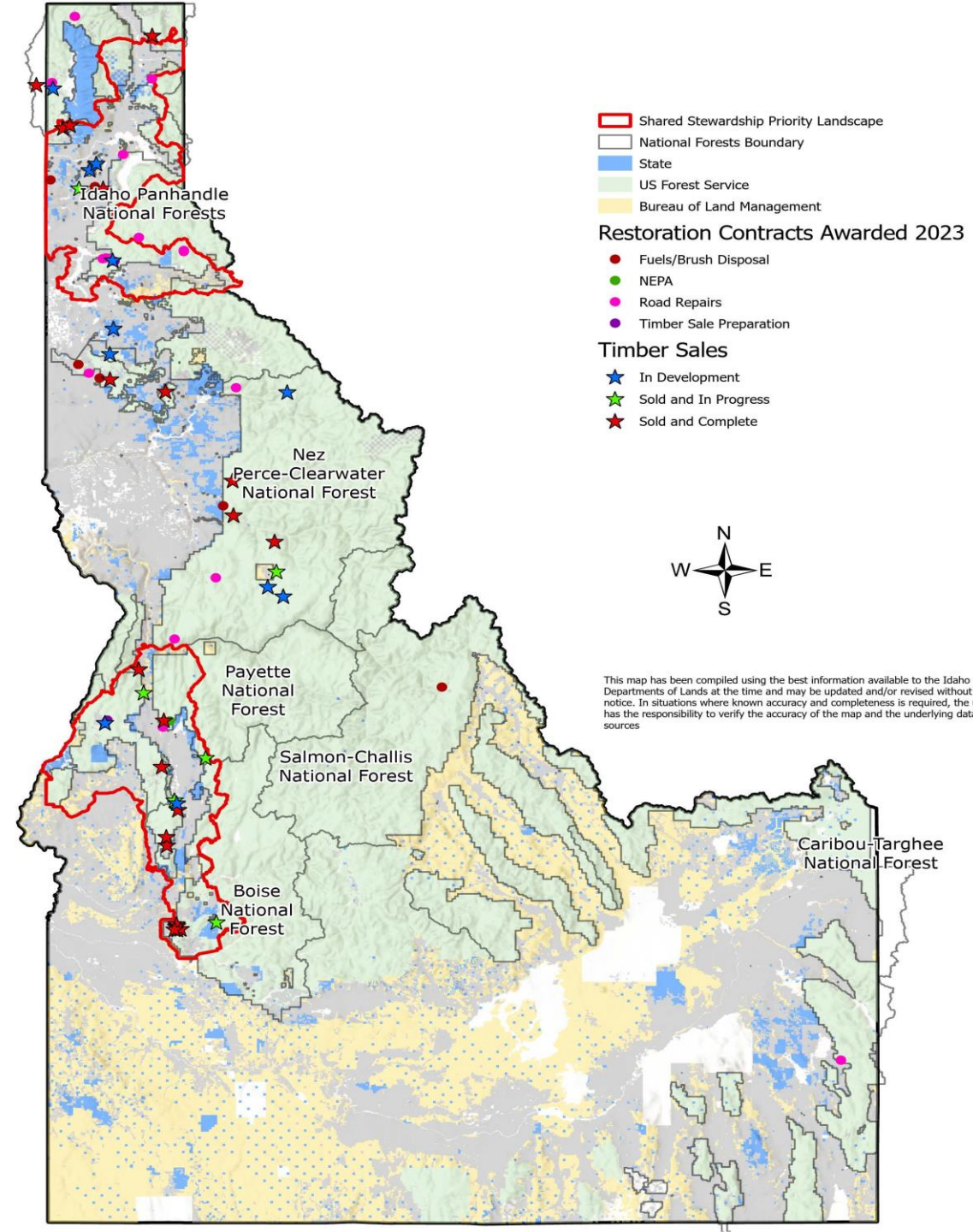


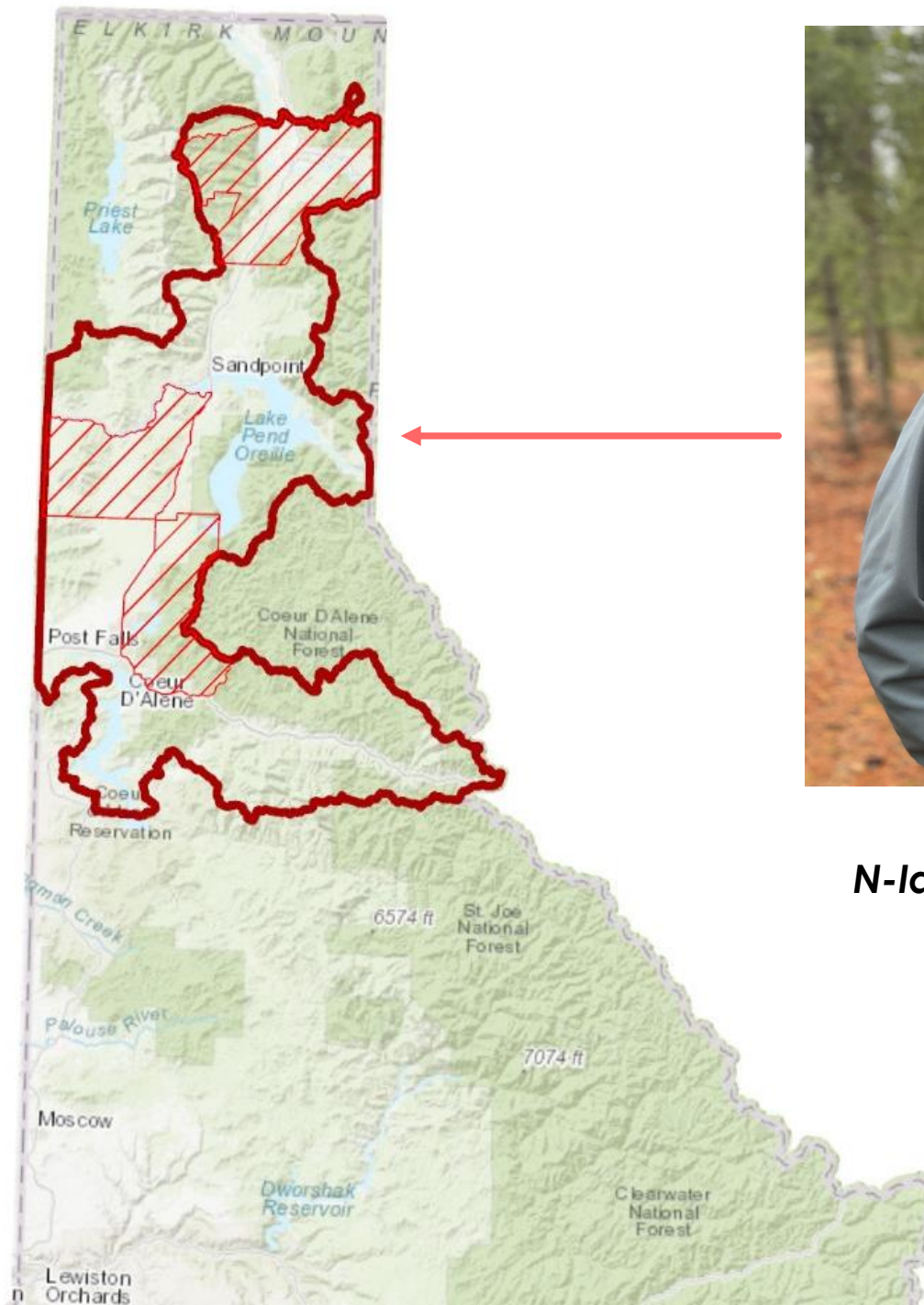
IDAHO SHARED STEWARDSHIP

GNA STATEWIDE PROGRESS

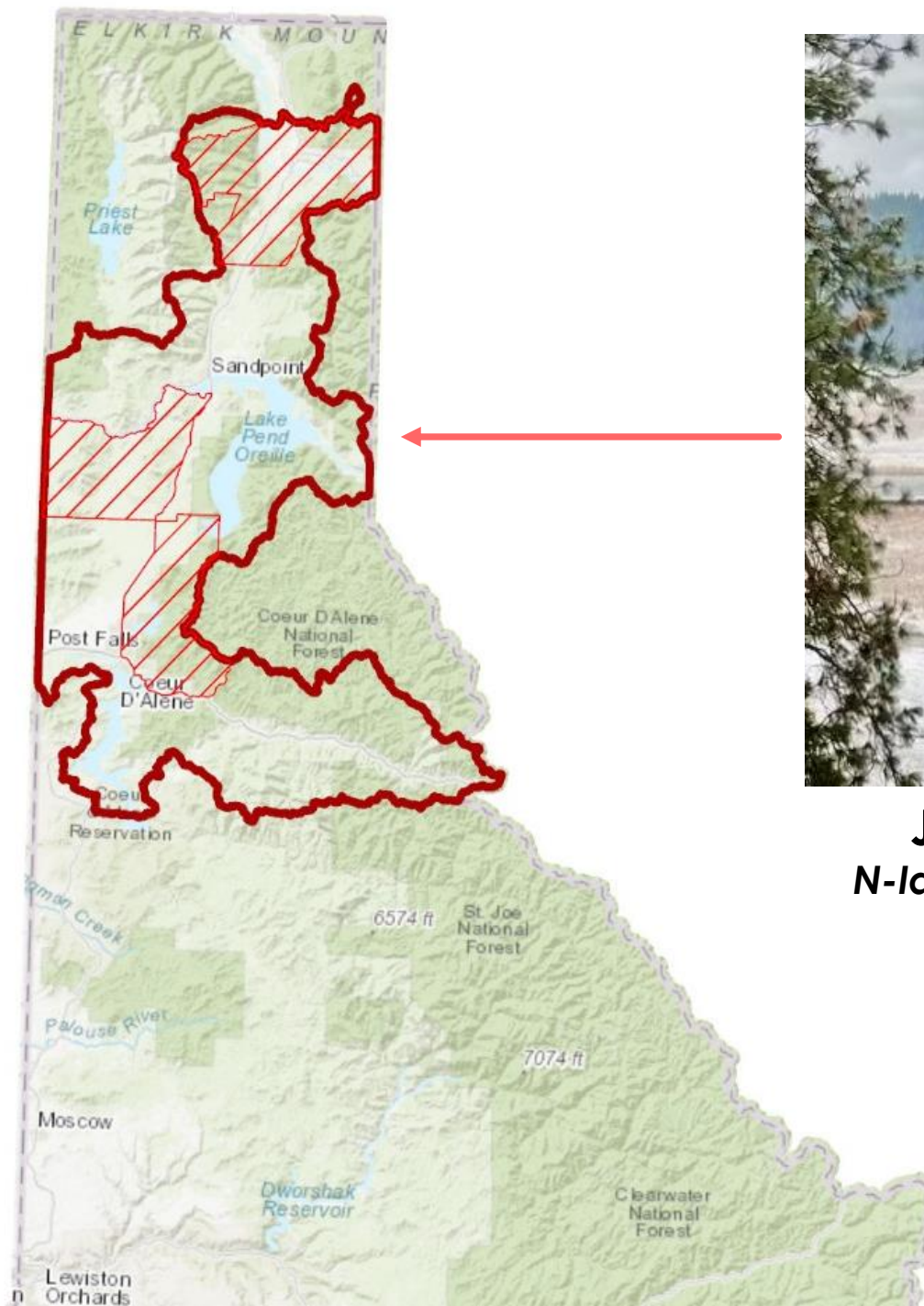
Statewide, in 2023:

- GNA now has agreements with six national forests
- Administered 20 active timber-sale operations
- Delivered 3,557 truckloads of logs
- 11 GNA timber sales were awarded:
 - 45.6 million board ft.
 - 3,000 total treatment acres
 - \$5.4 million total net sale value
- 102 miles of road improvements and replacements of 71 culverts and 1 bridge





Jeff Lau
***N-Idaho Shared Stewardship
Coordinator***



Jennifer Anderson
*N-Idaho Shared Stewardship
Coordinator (Acting)*

North-Idaho Shared Stewardship Priority Landscape

2023 Accomplishments

USFS

12,348
acres

GNA

1,152
acres

IDL

7,081
acres

Boundary,
Bonner,
Kootenai
Counties

737
acres

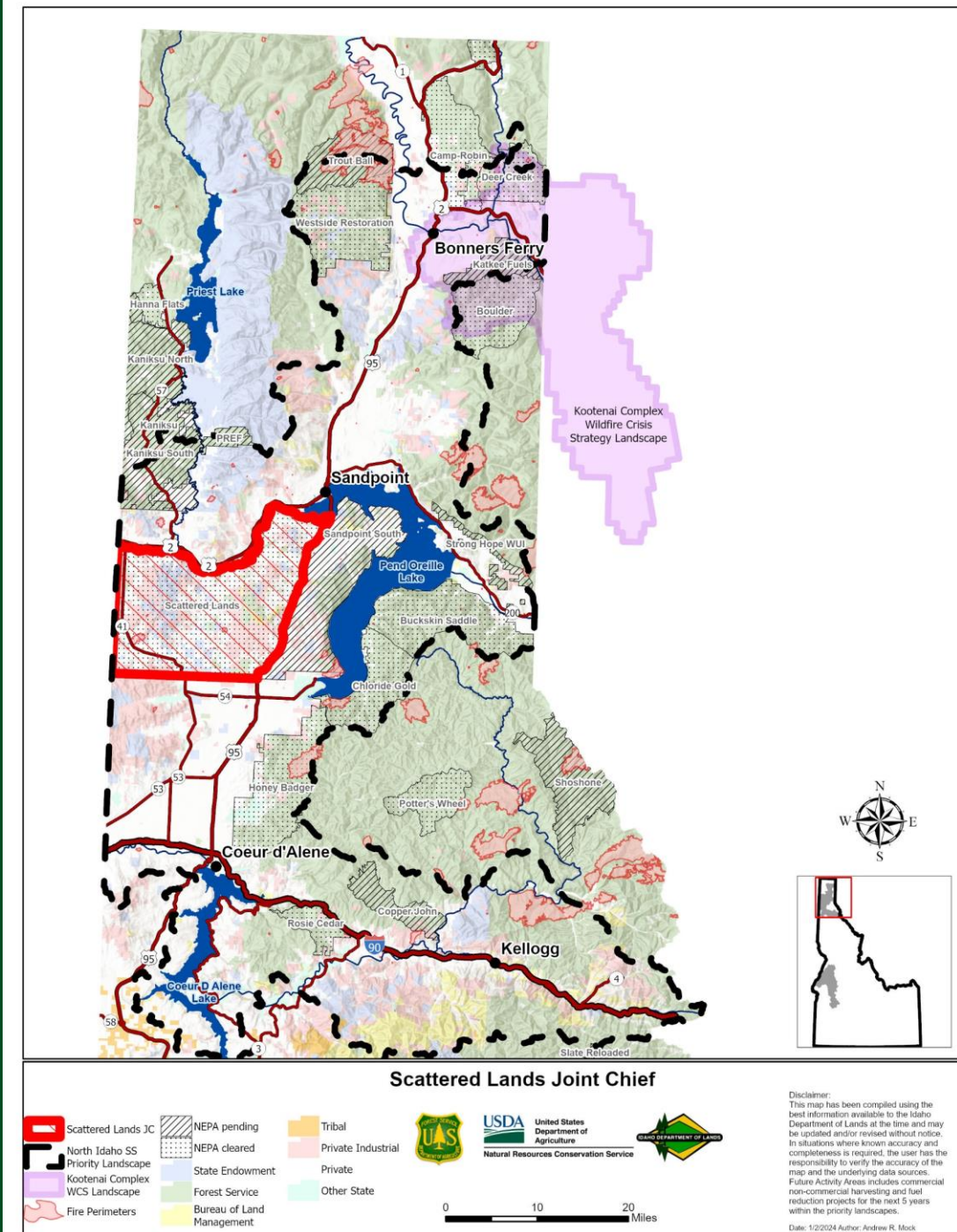
NRCS
EQIP

759
acres

North-Idaho Shared Stewardship Priority Landscape – Joint Chiefs

Scattered Lands Hazardous Fuels Joint Chiefs Project FY22-24

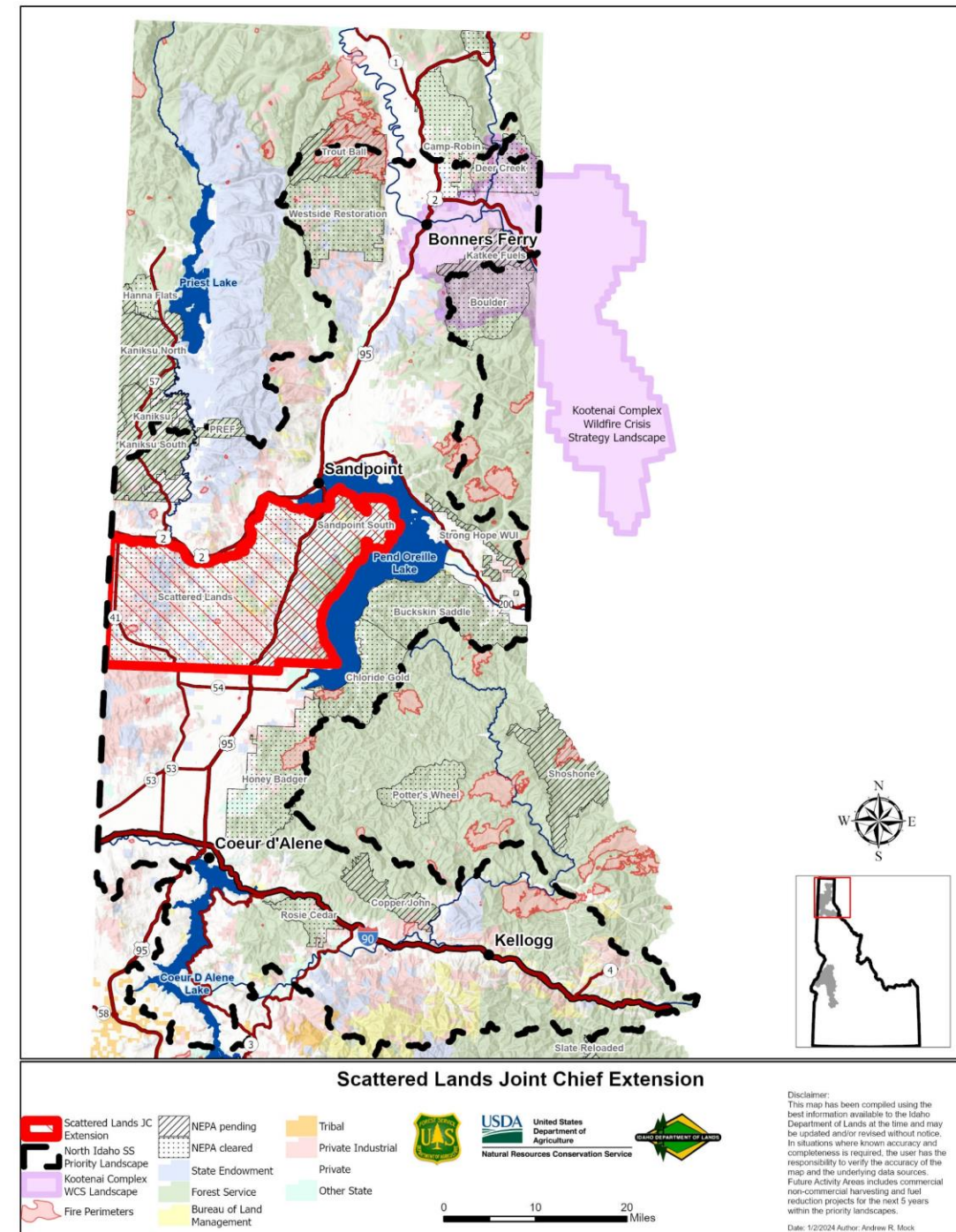
- \$1,482,865 total funding received
- 4,510 total planned treatment acres
- 2,837 acres treated to date (~63%)
- 6,597 cumulative acres treated to date (2022-2023)



North-Idaho Shared Stewardship Priority Landscape – Joint Chiefs

Expanded Scattered Lands Hazardous Fuels Joint Chiefs Project Area

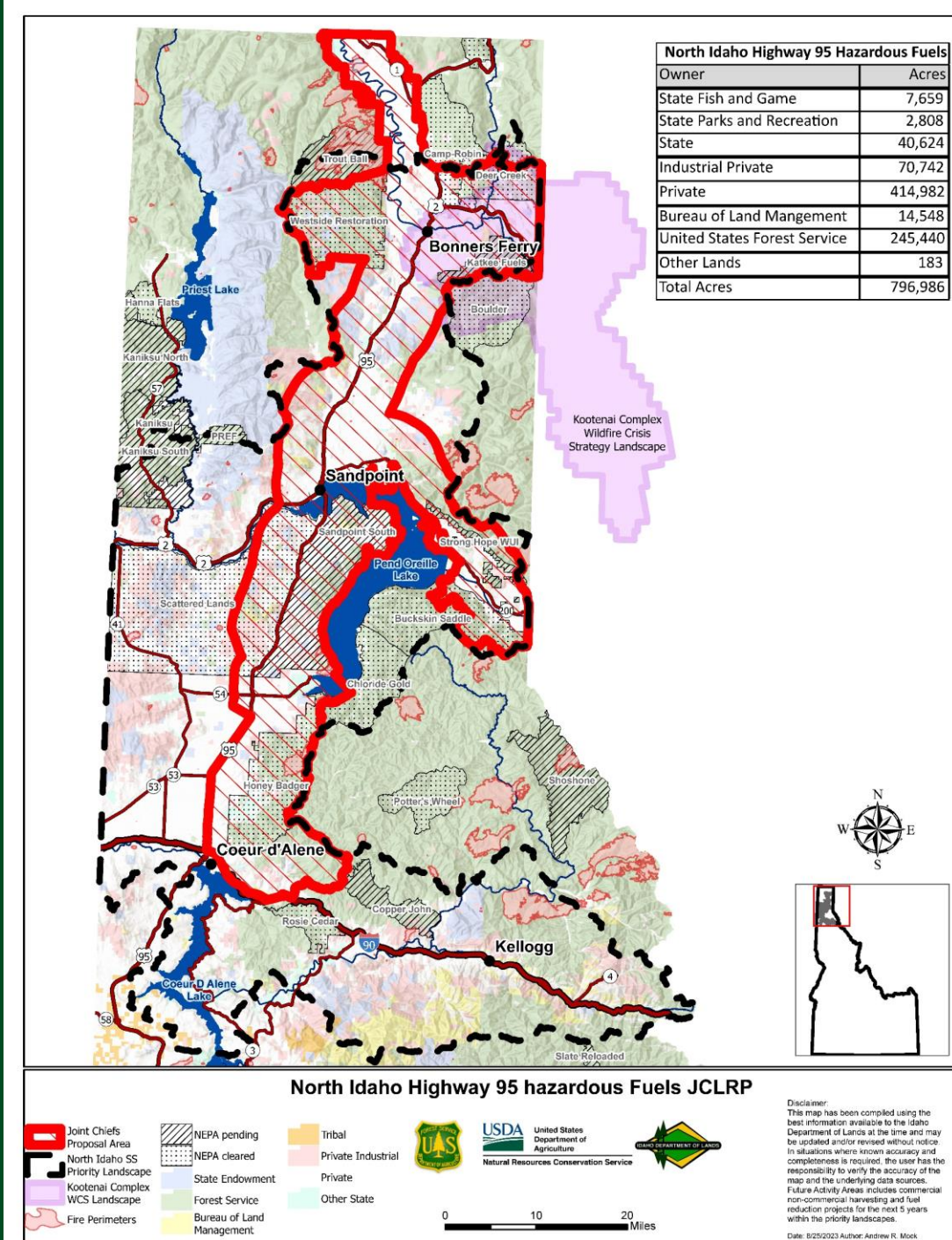
- Added approximately 80,146 acres to the original proposal
- The expansion included all lands west of Pend Oreille Lake and east of Highway 95



North-Idaho Shared Stewardship Priority Landscape – Joint Chiefs *Proposal*

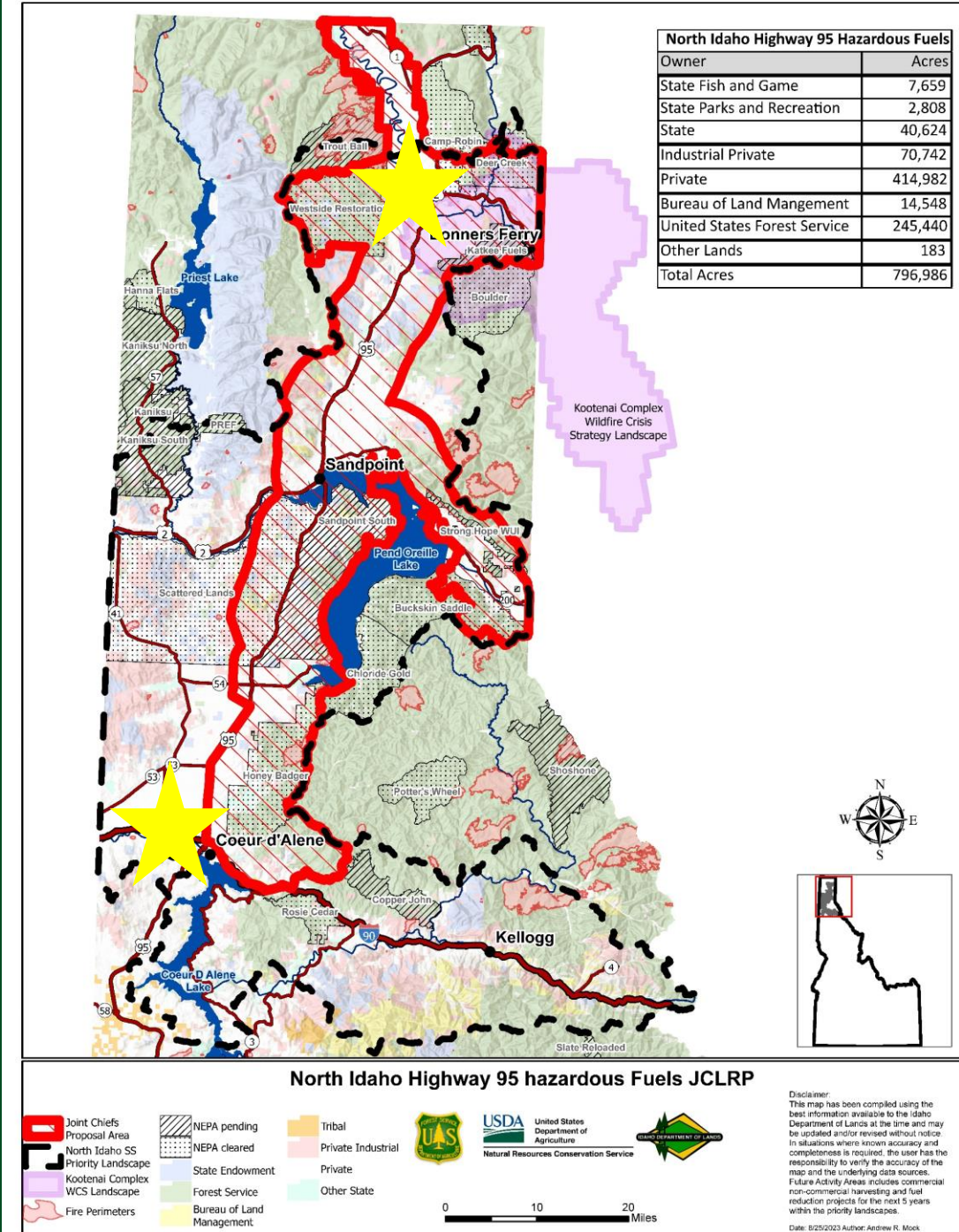
North-Idaho Highway 95 Hazardous Fuels Joint Chiefs Proposal FY24-26

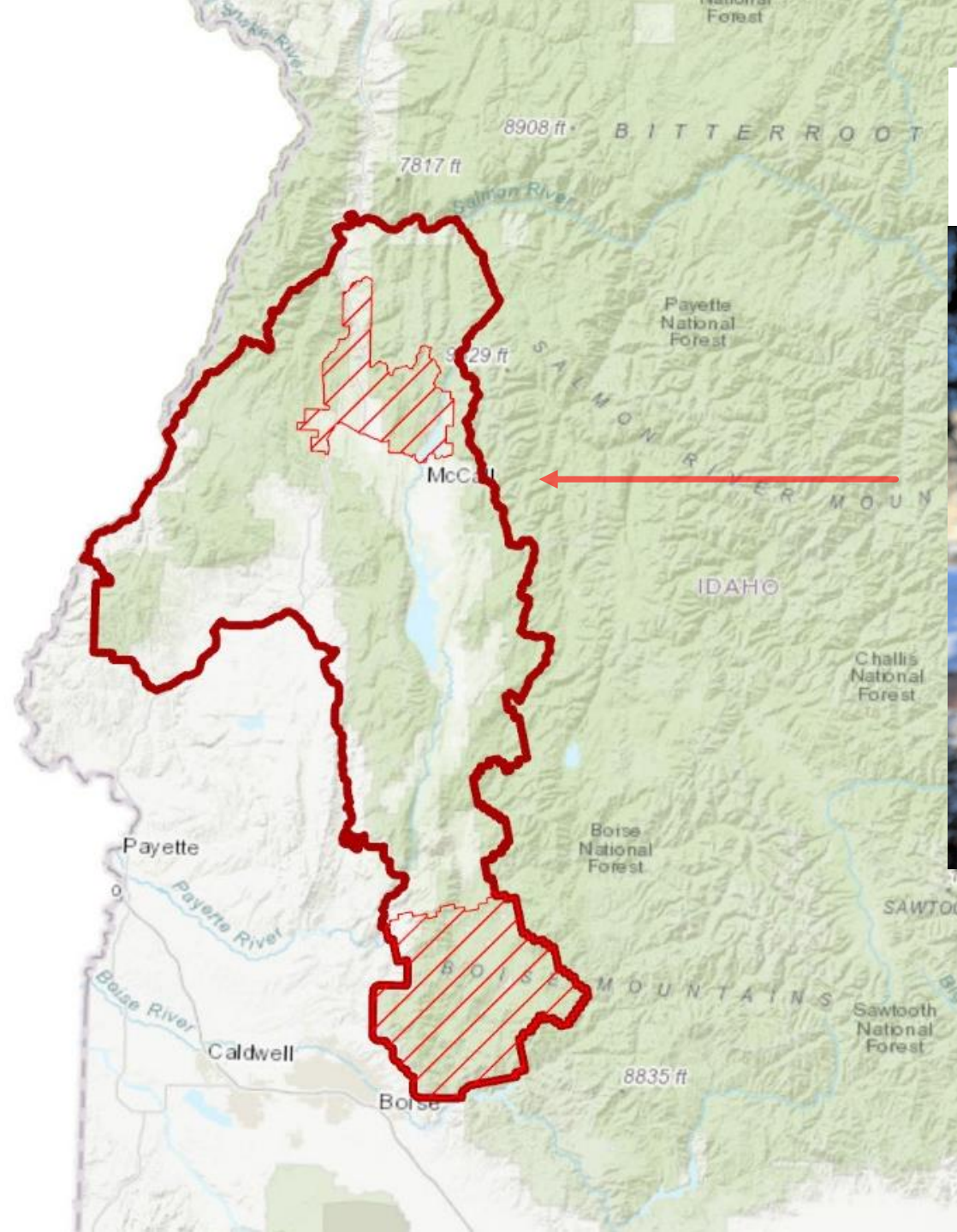
- 796,986 acre project area
- \$4,972,800 funding requested
- 7,766 planned treatment acres
- 78,506 estimated cumulative treatment acres (2024-2026)



North-Idaho Shared Stewardship Priority Landscape – Focal Areas

- Expanding into Kootenai County with treatments adjacent to the footprints of the 2023 Parkway Fire in Post Falls and Ridge Creek Fire near Hayden
- Expanding into Boundary County next to the Kootenai Complex Wildfire Crisis Strategy Landscape





Brian Davis
S-Idaho Shared
Stewardship Coordinator



South-Idaho Shared Stewardship Priority Landscape

2023 Accomplishments

USFS

41,327
acres

GNA

2,161
acres

IDL

3,622
acres

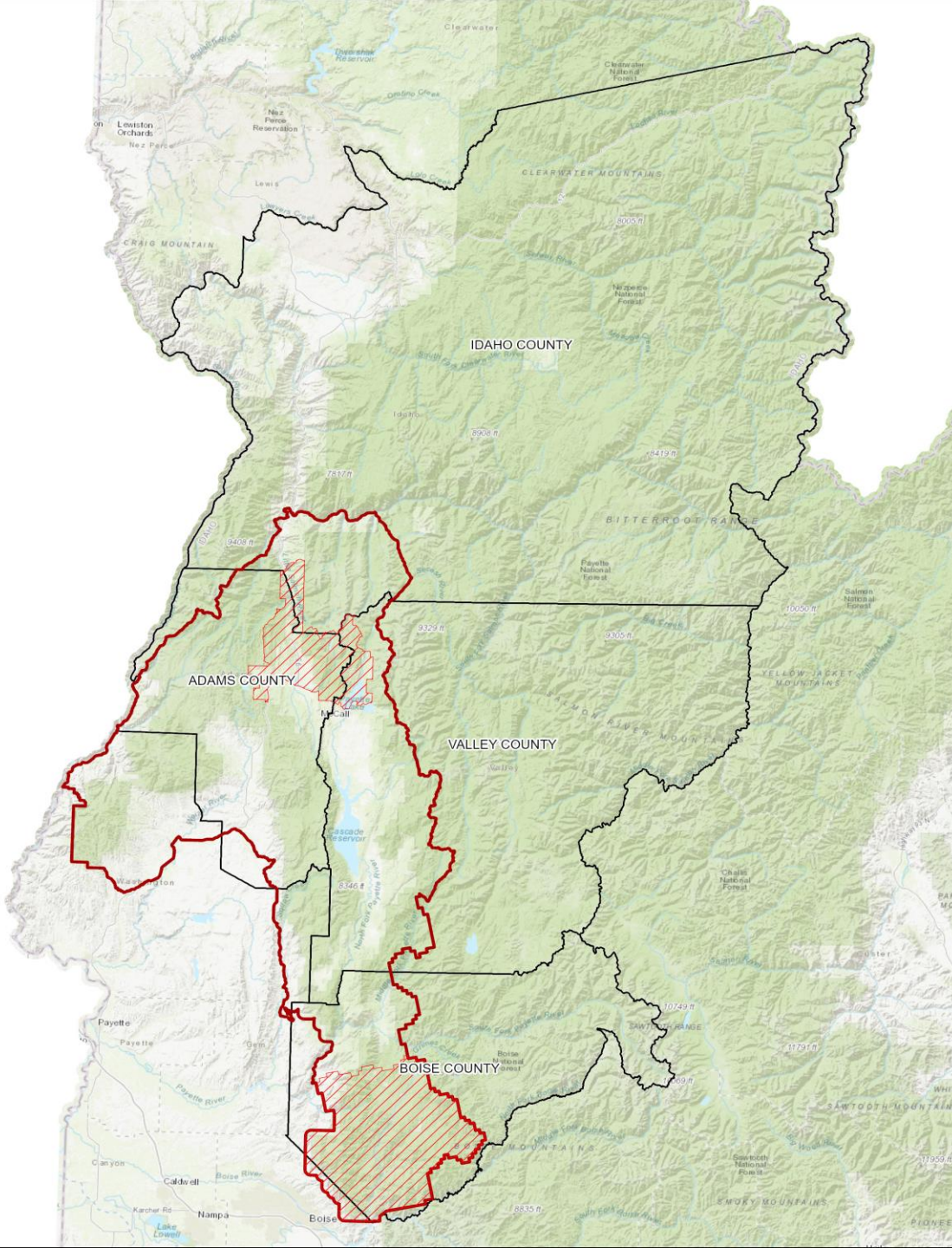
Valley,
Adams,
Boise
Counties

419
acres

NRCS
EQIP

79
acres

Landmark County GNA Agreements



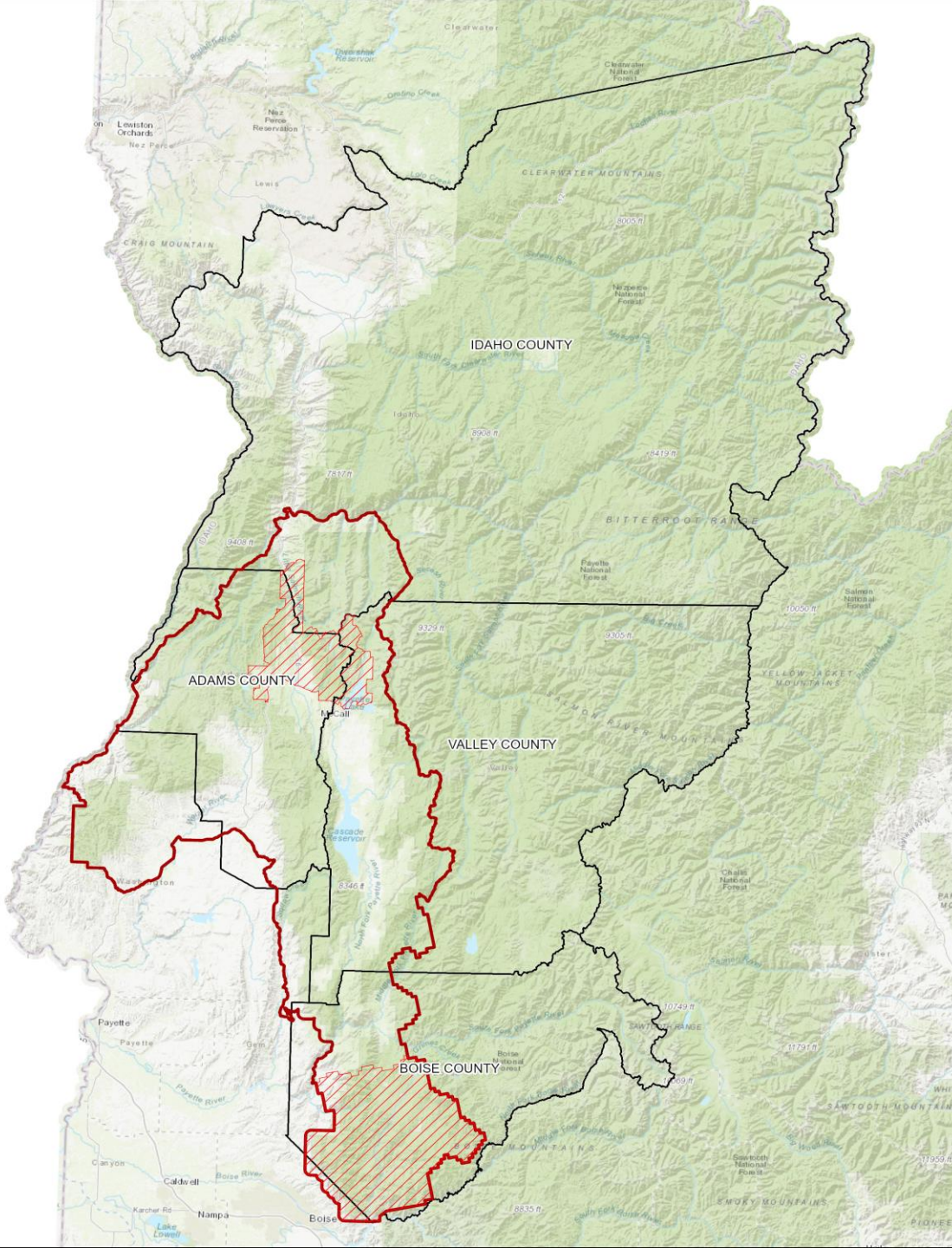
Adams County

Idaho County

Boise County

Valley County

2023 County GNA Funding



Adams County
\$795,000

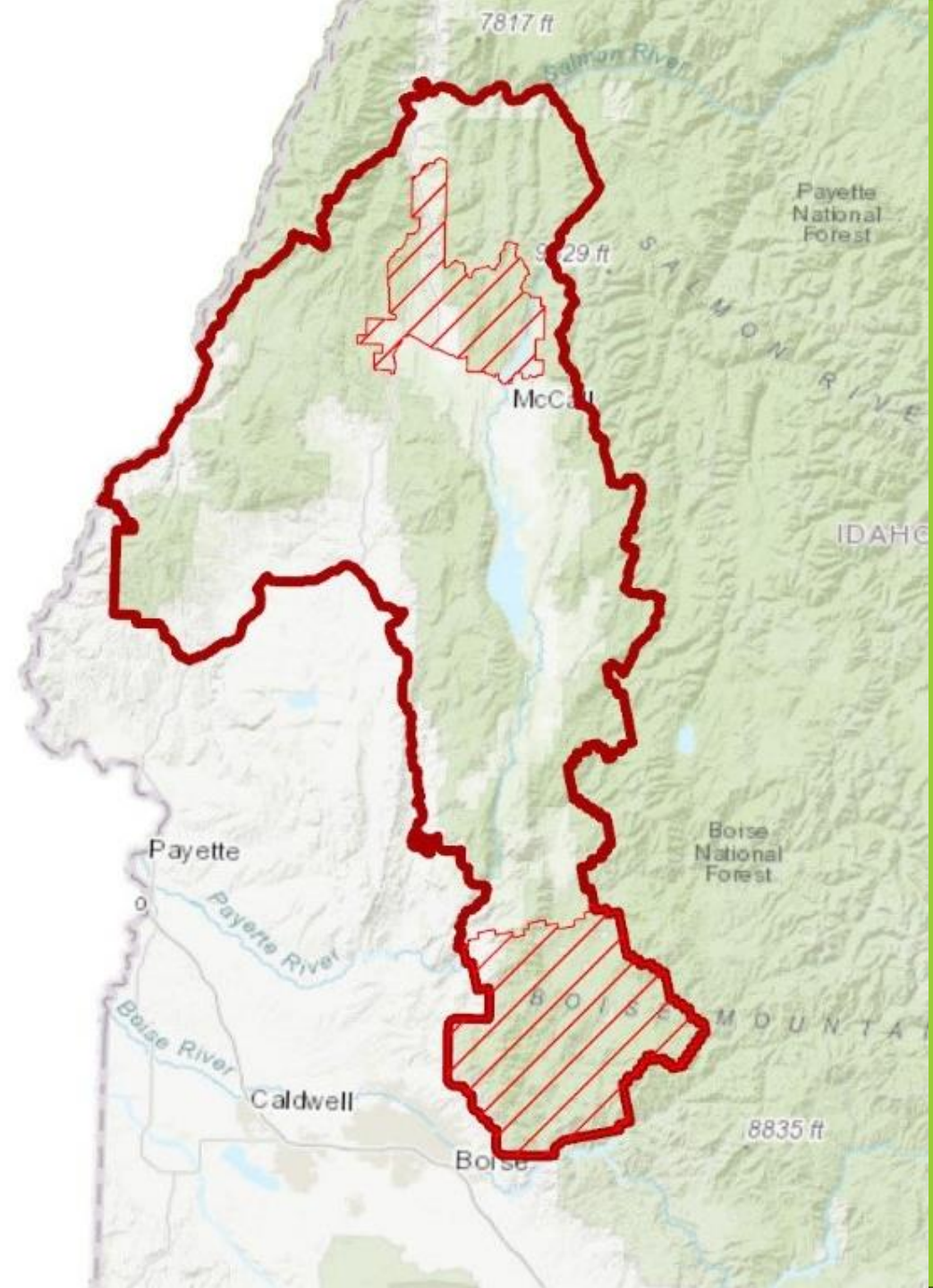
Idaho County
\$200,000

Boise County
\$600,000

Valley County
\$495,000

South-Idaho Shared Stewardship Priority Landscape *2023 Projects*

- County GNA Agreements
- *Highway 95 Corridor Focal Area*
- New Partners, New Projects



South-Idaho Shared Stewardship Priority Landscape

Boise Front Focal Area

Forest Service

- Johnson Creek - 705 acres

IDL Private Forestry

- Demo sites, outreach to landowners

Boise County

- Hiring Wildfire Mitigation Coordinator, Title 3 and HFR grant

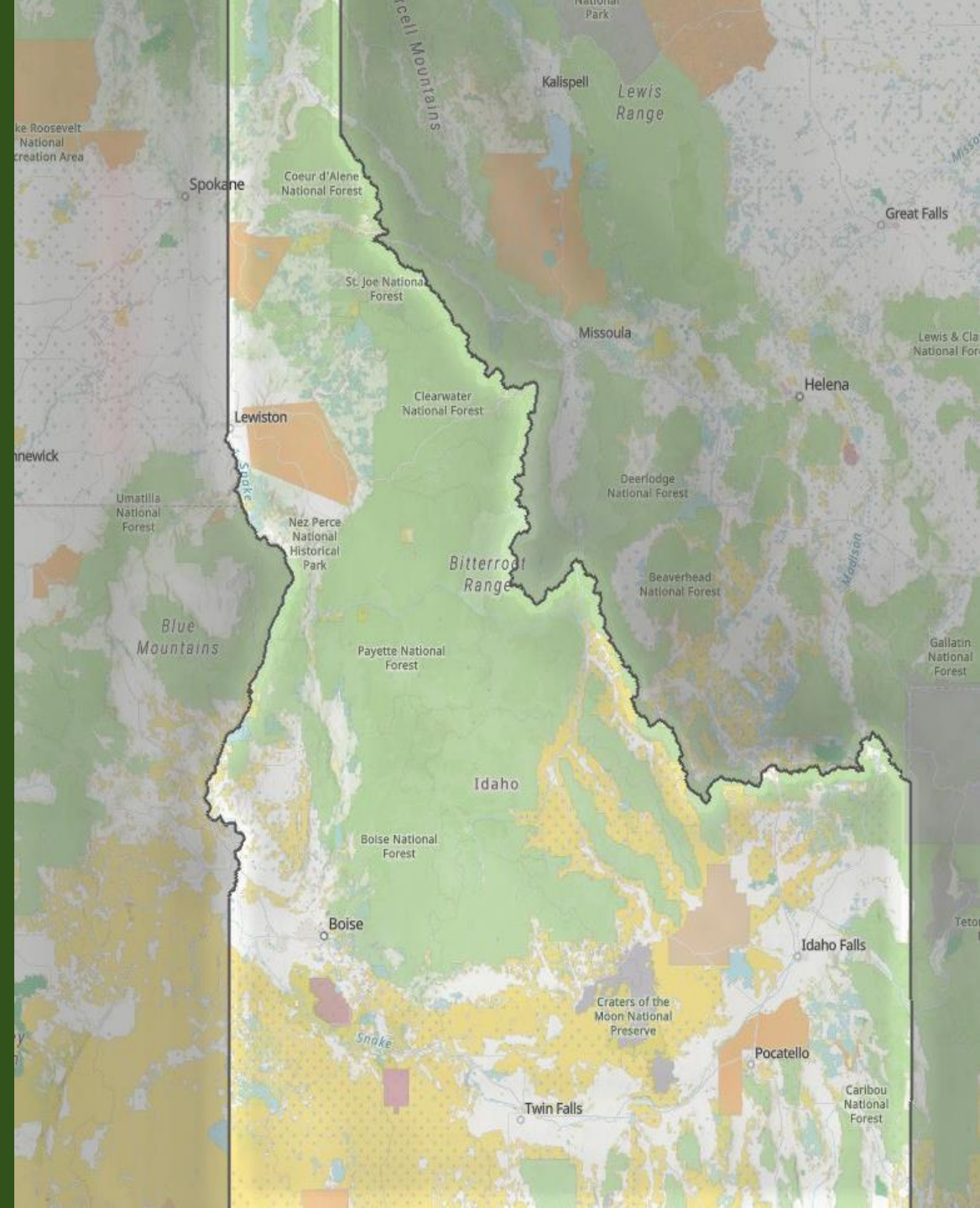
NFF

- All Lands Partnership
- RCPP Application #2

IDAHO SHARED STEWARDSHIP

Shared Stewardship Goal:

*Work to double the
annual acres
treated on Idaho's
national forests by
2025*

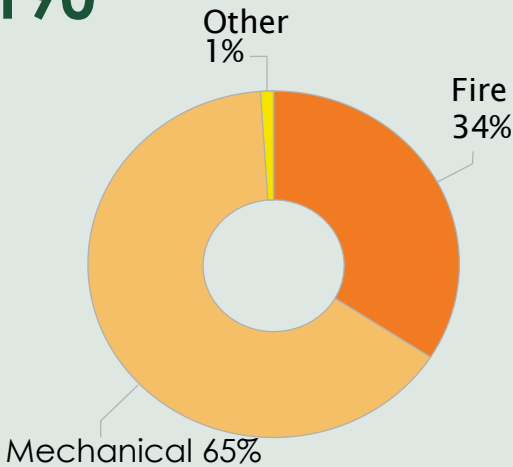


IDAHO SHARED STEWARDSHIP

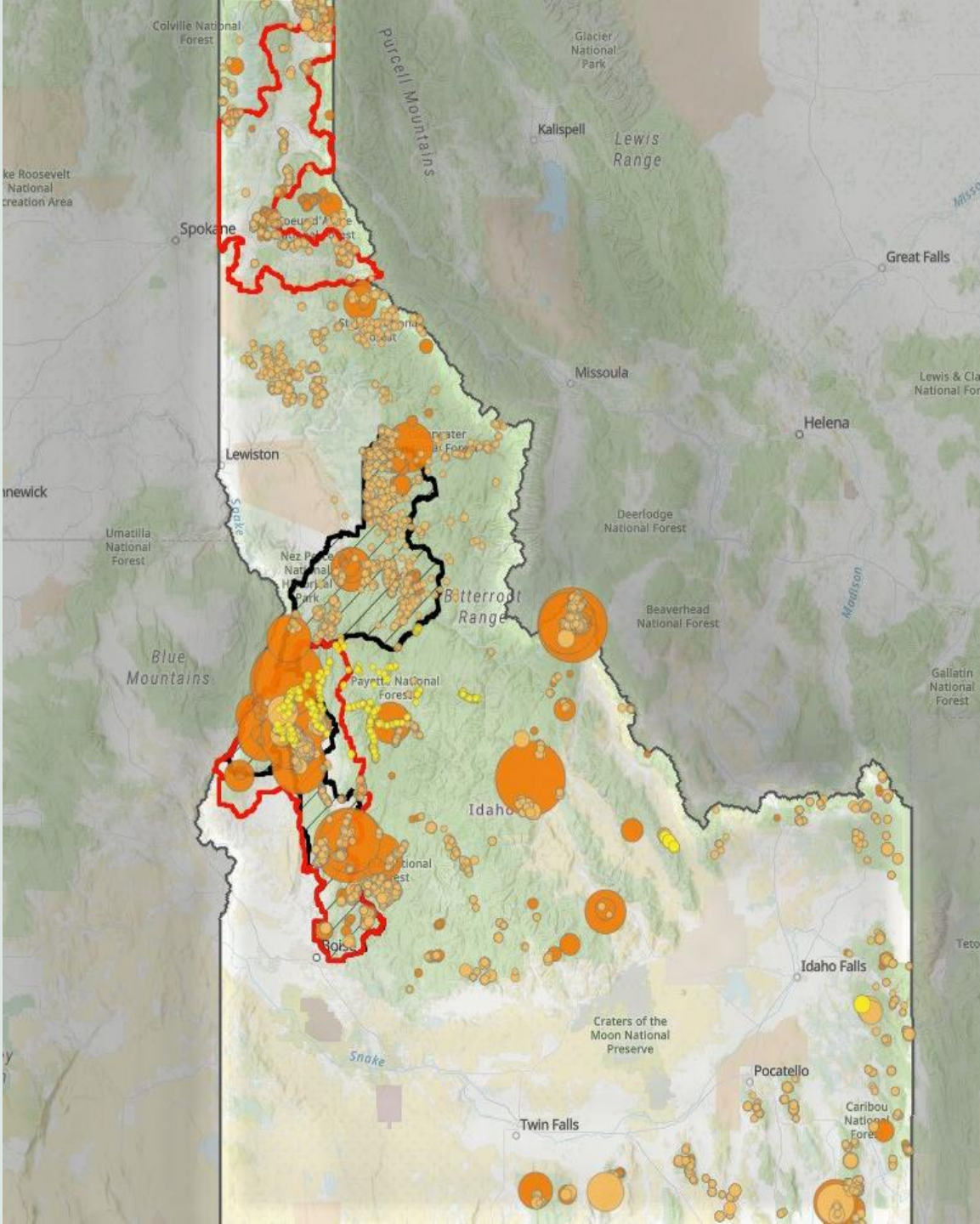
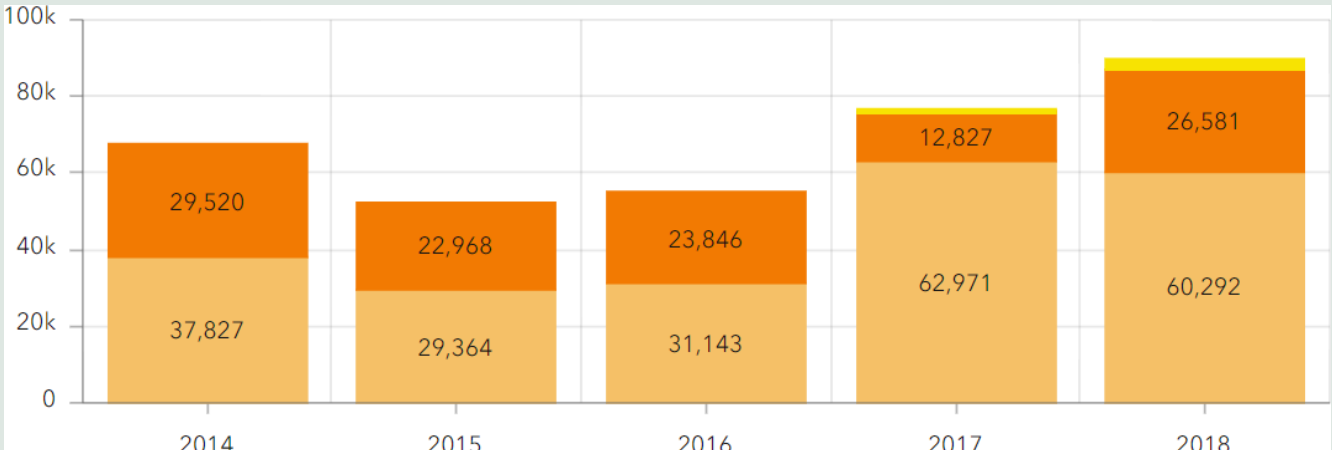
Pre-Shared Stewardship Agreement
FFY 2014-2018 Treatments on National Forests

Average Acres per Year: 68,190

- 340,949 total acres treated
- 221,597 acres Mechanical
 - 115,742 acres Prescribed Fire
 - 3,610 acres “other” treatments



Total Acres Treated per Year by Category



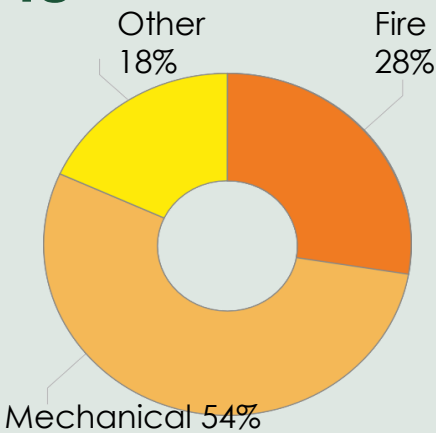
IDAHO SHARED STEWARDSHIP

Post-Shared Stewardship Agreement
FFY 2019-2023 Treatments on National Forests

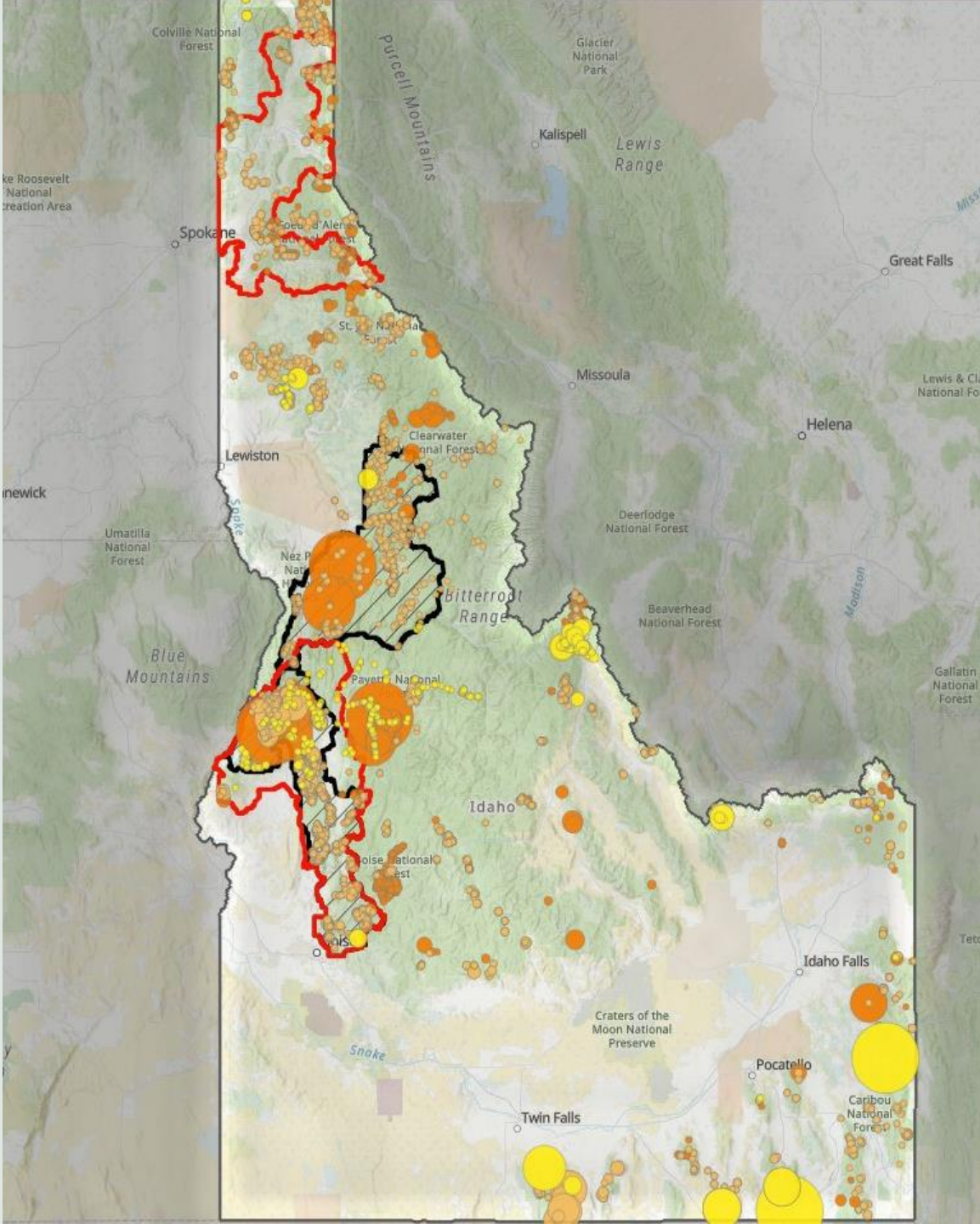
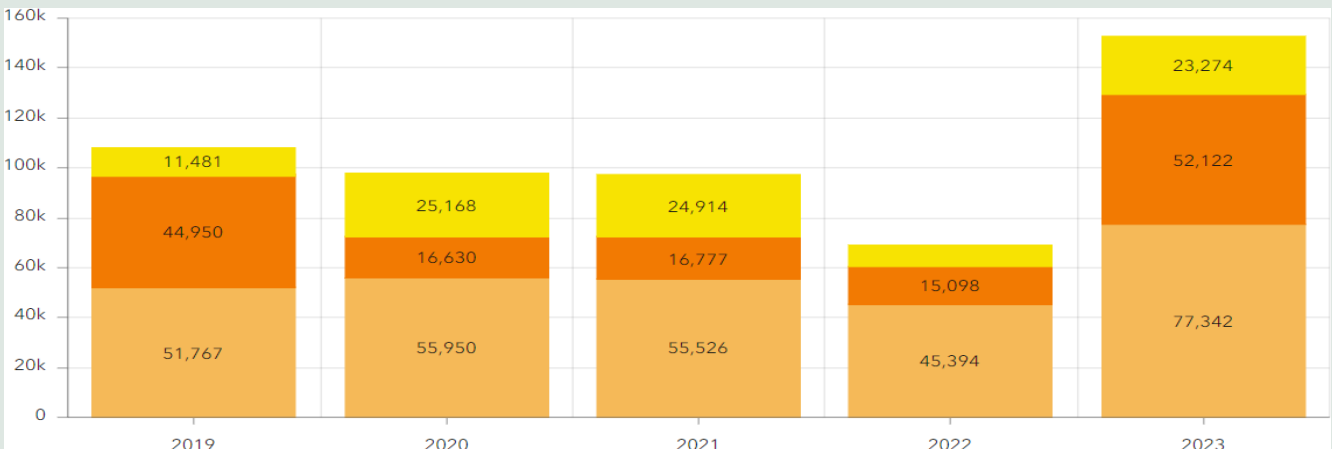
Average Acres per Year: 104,948

524,738 total acres treated

- 285,979 acres Mechanical
- 145,577 acres Prescribed Fire
- 93,182 acres “other” treatments



Total Acres Treated per Year by Category



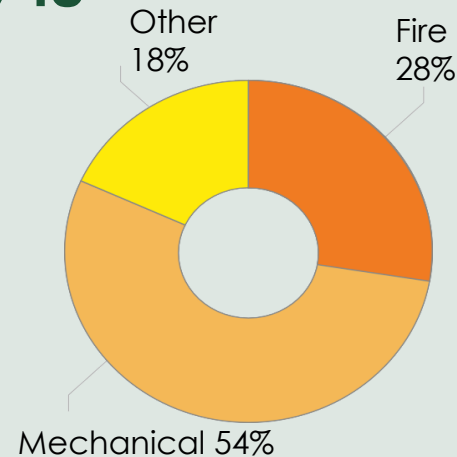
IDAHO SHARED STEWARDSHIP

Post-Shared Stewardship Agreement
FFY 2019-2023 Treatments on National Forests

Average Acres per Year: 104,948

524,738 total acres treated

- **285,979** acres Mechanical
- **145,577** acres Prescribed Fire
- **93,182** acres "other" treatments



54% Increase!

**Up 36,758 acres per year,
on average**

