

2024 Idaho Douglas-fir Tussock Moth Monitoring Report



Table of Contents

Executive Summary	<u>4</u>
Background and History.....	<u>5</u>
Monitoring Methods.....	<u>7</u>
Results of 2024 Survey Season	<u>8</u>
Conclusions.....	<u>9</u>
Literature Cited.....	<u>10</u>
Figure 1. Adult Douglas-fir tussock moth male (left) and female (right)	<u>11</u>
Figure 2. Douglas-fir tussock moth egg mass	<u>11</u>
Figure 3. Newly hatched (left) and fully grown (right) Douglas-fir tussock moth larvae.	<u>12</u>
Figure 4. Douglas-fir tussock moth (DFTM)-caused tree defoliation	<u>12</u>
Figure 5A. Aerially-mapped defoliation by Douglas-fir tussock moth for the 1940s – 2024.....	<u>13</u>
Figure 5B. Mapped defoliation by Douglas-fir tussock moth in 2024.....	<u>14</u>
Figure 6. Early Warning System (EWS) pheromone-baited sticky trap and captured adult male moths	<u>15</u>
Figure 7. Mean trap catches of Douglas-fir tussock moth on plots monitored by IDL (top) and visible defoliation in northern Idaho (bottom) from 1977 – 2024.....	<u>16</u>
Figure 8. Douglas-fir tussock moth-caused defoliation in northern Idaho and western Montana, 2020 – 2022	<u>17</u>
Figure 9A. Photos of severe tree defoliation by Douglas-fir tussock moth at Craters of the Moon National Monument in 2017.....	<u>18</u>
Figure 9B. Photos of very limited tree recovery at Craters of the Moon National Monument in 2018, 2019, and 2020, following severe defoliation by Douglas-fir tussock moth in 2017	<u>19</u>
Figure 10 Douglas-fir tussock moth-caused defoliation recorded by aerial detection survey in SW ID, 2018 - 2022	<u>20</u>
Figure 11. Early Warning System trap distribution in Idaho in 2024	<u>21</u>
Figure 12. Data sheet for Shepherd <i>et al.</i>, 1985 Douglas-fir tussock moth egg mass sampling method	<u>22</u>
Figure 13. Map of sites trapped by IDL and R1 for Douglas-fir tussock moth in 2024	<u>23</u>
Figure 14. Map of sites trapped by R4 for Douglas-fir tussock moth in 2024	<u>24</u>
Figure 15. Map of sites surveyed for Douglas-fir tussock moth egg masses in 2024	<u>25</u>



Report No. IDL 24-2

December 2024



2024 IDAHO DOUGLAS-FIR TUSSOCK MOTH MONITORING REPORT

Cooperators:

Idaho Department of Lands

Tom Eckberg, Forest Health Program Manager
Erika Eidson, Forest Health Specialist
Isabella Valdez Forest Health Specialist

USDA Forest Service, Northern Region, Coeur d'Alene

Gina Davis, Group Leader/Entomologist
Danielle Malesky, Entomologist

USDA Forest Service, Intermountain Region, Boise

Carl Jorgensen, Group Leader/Entomologist
Nicole Green, Entomologist
Anna Webb, Entomologist
Jason Neumann, Biological Science Technician

Report No. IDL 24-2

Prepared by:

Isabella Valdez, IDL
Tom Eckberg, IDL
Erika Eidson, IDL

December 2024

Executive Summary

After the recent Douglas-fir tussock moth outbreaks, populations have declined and limited damage occurred in 2024 across Idaho.

Northern Idaho

In northern Idaho, Douglas-fir tussock moth activity has collapsed. No defoliation was recorded in 2024. No larval sampling was conducted in 2024.

A total of 171 sites were monitored in northern Idaho (138 by IDL and 39 by USFS-R1) during 2024. The overall mean trap capture was 0.026 moths per trap. Due to low trap captures, egg mass sampling was not warranted at any of the sites.

Little or no defoliation is anticipated in northern Idaho in 2025.

Southern Idaho

In southern Idaho, nearly 1,000 acres of Douglas-fir tussock moth defoliation occurred south of American Falls in the Deep Creek Mountains on BLM, private, and State lands after no defoliation was recorded in 2023. The defoliation data was collected via Google Earth Imagery and field visits, rather than via aerial detection surveys, as this area was not flown in 2024. There will likely be some tree mortality in 2025 associated with the defoliation in the Deep Creek Mountains. Egg mass samples were attempted in November, but roads were too snowy to access the defoliated areas. Parasitized cocoons were observed at several locations outside the defoliated areas.

The 2024 aerial detection survey recorded only 46 acres of defoliation south of Mackay in southern Idaho. In 2023, no defoliation was recorded in southern Idaho, but some important areas were not flown in surveys. In 2022, 184 acres of defoliation were recorded in the Owyhee Mountains near Silver City. This area was flown in 2023, but no additional defoliation was seen. The Owyhee Mountains were not flown in aerial surveys during 2024.

A total of 31 adult trap sites were monitored in southern Idaho by USFS-R4 during 2024, and the average number of captured males was 4.88 moths per trap. Many sites had average trap captures approaching the threshold of 25 moths per trap, but only two sites had average trap captures that exceeded this threshold. One site was in Craters of the Moon National Monument, and one was located north of Fairfield on Couch Summit Road. Egg mass sampling was conducted at these two sites, as well as at five other locations. The egg mass survey conducted by the USFS adjacent to the Craters of the Moon National Monument indicated that the area may potentially experience defoliation in 2025.

Some defoliation is anticipated in southern Idaho in 2025, and follow-up surveys are planned.

Background and History

Douglas-fir tussock moth (DFTM) is a native defoliator of true firs, Douglas-fir, and occasionally other conifers in western North America. Adult males are common-looking gray-brown moths with feathery antennae ([figure 1](#)). Females are heavy-bodied and flightless, and release sex pheromones that attract males to mate. After mating, females lay egg masses ([figure 2](#)) on host tree branches in late summer or fall. Egg hatch coincides with bud burst the following spring and developing larvae ([figure 3](#)) feed on host foliage ([figure 4](#)). Development timing can vary with temperature and elevation, but pupation typically occurs in late July or August, and new adult moths emerge in late summer or fall.

In most years, DFTM populations are low and do not cause visible defoliation, but populations can periodically irrupt in cyclical outbreaks. During the outbreak phase of the cycle, DFTM populations build rapidly over a few years, then quickly collapse within one to two years as starvation, predation, parasitism, and infection by a DFTM-specific nuclear polyhedrosis virus (NPV) cause high levels of DFTM mortality. In northern Idaho, there is a long history of periodic outbreaks causing widespread defoliation ([figure 5A](#)). In southern Idaho, large outbreaks have also occurred, but at irregular intervals. Tree defoliation during a DFTM outbreak can appear very dramatic, but trees with light or moderate defoliation often recover following the outbreak.

Since 1977, Idaho has participated in the DFTM Early Warning System (EWS), which uses a series of permanent pheromone trap sites in recorded historic outbreak areas to identify increasing populations prior to undesirable tree defoliation (system adapted from Daterman *et al.*, 1979). Pheromone lures that mimic sex pheromones produced by female moths are placed in sticky traps ([figure 6](#)) before the DFTM flight period. The number of captured adult males caught throughout the flight period is recorded each year. Sharp increases in trap catches provide land managers with advance warning of building populations. Over the decades, some sites have been dropped or moved due to fires or other disturbances, but the overall concept remains the same and priority areas have been monitored.

North Idaho Outbreaks and EWS trapping

In northern Idaho, four periods of DFTM outbreaks have been detected since implementing the EWS just after major outbreaks in the mid-1970s. The first outbreak detected by EWS traps occurred in the 1980s in Latah County and Benewah County ([figure 5A](#)). According to records, outbreaks of DFTM have occurred in this general area approximately every 8-10 years since at least the late 1940s when aerial detection surveys became common. The 1980s outbreak was preceded by high numbers of moth captures, but significant defoliation was only recorded by aerial observers in 1986 ([figure 7](#)).

The next documented northern Idaho outbreak occurred in the early 2000s and resulted in three years of defoliation on state and private lands between Plummer and Moscow, and on adjacent Clearwater National Forest lands. Similar to the 1980s outbreak, trap captures averaged over 40 moths per trap prior to visible defoliation ([figure 7](#)).

A third outbreak occurred between 2010 and 2012 and did not follow the same trends in location or moth captures. Defoliation was centered farther north than previous outbreaks, with limited defoliation near Moscow Mountain. Most of the defoliation was in Kootenai County near Signal Point, in Benewah County near Plummer, and in McCroskey State Park. The average number

of moths per trap captured prior to observed defoliation was much lower relative to the two earlier periods of outbreaks. In 2010, the average number of moths per trap was 11.8, a slight decrease from 11.9 the previous year, but over 8,500 acres of defoliation were mapped in aerial surveys. Defoliation peaked in 2011 at over 106,000 acres (approximately 68,000 acres on state and private ownership in Latah and Benewah counties, with the remaining defoliation occurring on the Nez Perce-Clearwater National Forest in the South Fork of the Clearwater River drainage). An average of 43.8 moths per trap were captured that same year. Averages greater than 40 moths per trap would normally be expected the year prior to observed defoliation. In 2012, only 6.3 moths per trap were captured and approximately 31,000 acres of defoliation were detected ([figure 7](#)).

Finally, a fourth northern Idaho outbreak recently collapsed. Aerial surveyors detected approximately 16,700 acres of DFTM-caused defoliation in northern Idaho in 2020, with additional defoliation in western Montana ([figure 8](#)). Trap catches began rising in 2017, but defoliation occurred further east of the historic recorded outbreak areas, where EWS traps have mostly not been established. In 2021, over 9,500 acres of defoliation were mapped, but only 132 acres in scattered polygons were observed in 2022. The 2022 defoliation was south and southwest of Avery in the St. Joe National Forest. No defoliation was recorded in 2023 or 2024.

South Idaho Outbreaks and EWS trapping

Records of EWS trapping date back to 1980 in southern Idaho, but trapping has been carried out inconsistently over the decades, and aerial survey data is not consolidated in this region prior to 1990. Trap catch records indicate there may have been DFTM outbreaks in the early 1980s in southern Idaho, i.e. USFS Region 4 portion, but there were no acres of defoliation recorded through aerial survey at that time. From 1990-1992, a major DFTM outbreak in southern Idaho caused defoliation on over 400,000 acres, primarily affecting areas east of Highway 21 on the Boise and Sawtooth National Forests. The Sagehen Reservoir area near Smiths Ferry and the Cuddy Mountain area near Cambridge were also defoliated in the early 1990s outbreak ([figure 5A](#)). Smaller outbreaks in the early 2000s affected the most southern reaches of the state that included large areas in the Owyhee Mountains.

Trap catch numbers began increasing significantly in 2014, and again in 2017. Heavy defoliation was noted in stands of Douglas-fir in Craters of the Moon National Monument (figures [9A](#) and [9B](#)) and several other areas. Beginning in 2018 and continuing in 2019, a large outbreak affected the forests surrounding the Long Valley and Round Valley areas ([figure 10](#)). In 2020, defoliation subsided in most locations in southern Idaho, with the exception of approximately 3,000 acres in the Cuddy Mountain and Hitt Mountain areas west of Cambridge (Payette National Forest) and some additional defoliation in the Big Hole mountains west of Driggs. In 2021, there were additional small and scattered areas of defoliation around Hitt and Cuddy Mountain (over 400 acres), as well as nearly 3,000 acres of defoliation in the Owyhee Mountains south of Marsing. No defoliation was observed in the Cuddy or Hitt Mountain areas in 2022. The only DFTM defoliation reported in southern Idaho in 2022 was 184 acres in the Owyhee Mountains ([figure 5A](#)). No DFTM defoliation was recorded in 2023. In 2024 only 46 acres of DFTM defoliation were reported south of Mackay in aerial detection surveys, however an additional 972 acres of DFTM defoliation were recorded by BLM personnel using Google Earth Imagery in the Deep Creek area, which was not covered by the 2024 aerial detection surveys ([figure 5B](#)).

Outbreak Forecasting

Early Warning System trapping is often effective for predicting when DFTM outbreaks will occur, but it is not intended to predict the location or extent of tree defoliation. Therefore, additional population sampling methods for other life stages are needed to improve outbreak forecasting. Egg mass and larval sampling are two additional methods to supplement EWS monitoring for predicting DFTM outbreak intensity and pinpointing precise locations of expected defoliation (Mason and Torgersen, 1983, Kegley *et al.*, 2004). Observations of damage to ornamental spruce in landscaped settings are another indicator that outbreaks of DFTM will soon develop in forested settings, particularly in north Idaho where landscape trees are adjacent to natural forests (Tunnock *et al.*, 1985; Sturdevant, 2000). These ‘sentinel trees’ are often Colorado blue spruce. Although spruce are lesser-preferred DFTM host species during outbreaks in natural forests, these ornamental spruce are often stressed from being planted off-site and are regularly evaluated for various issues. Prior to the 2010-2012 outbreaks in northern Idaho, defoliation of ornamental spruce was first observed at the USFS Coeur d’Alene nursery in 2007 and 2008, and grand fir yard trees were defoliated at Twin Lakes and Mica Flats in 2009 and 2010. Sentinel trees were also observed in Kootenai county and in Spokane County, Washington prior to 2020 defoliation.

Monitoring Methods

Pheromone Traps

The Idaho Department of Lands (IDL) and U.S. Forest Service Region 1 (USFS R1; northern Idaho) and Region 4 (USFS R4; southern Idaho) cooperatively manage EWS DFTM monitoring sites throughout the state ([figure 11](#)). In general, IDL maintains trap sites from Spirit Lake south to Moscow and east to Harvard. Additionally, 10 IDL-monitored sites were installed in 2020 near Smith’s Ferry in southern Idaho on the Packer John State Forest. The Packer John State Forest was heavily defoliated in 2018 and 2019 and will be monitored for future outbreaks.

Forest Health Protection, Coeur d’Alene Field Office (USFS-R1), generally maintains trap sites from Potlatch to Lucille. Forest Health Protection, Boise Field Office (USFS-R4), maintains most trap sites in southern Idaho.

Each year, five pheromone-baited sticky traps ([figure 6](#)) are installed along a transect at each trap site, with approximately 75 feet between traps. Traps are placed in young, open-grown host trees (grand fir or Douglas-fir) in late July to early August, to coincide with DFTM flight timing. Traps are collected in late September or October and the number of male moths captured in each trap is recorded. The common threshold used to predict defoliation the following year at a site is an average of 25 or more moths per trap, but we have learned over time that even 15 males on average per trap may indicate a potential outbreak with noticeable defoliation. EWS pheromone trapping is not designed to predict the exact location of future defoliation, but it is useful in identifying potential nearby drainages that may be impacted in the next year or two and follow up ground and aerial surveys are recommended.

Egg Mass Sampling

When trap captures are high (near the 25 average moths per trap threshold), fall egg mass sampling may be used to estimate the potential for defoliation in a specific area the following year. Two egg mass sampling methods are used in Idaho: (1) the “timed plot technique” and (2) methods described in Shepherd *et al.*, 1985 (“sequential sampling”). The timed plot technique works well for smaller crews and is conducted by examining grand fir and Douglas-fir trees for a total of ten working minutes (i.e., 10 minutes for a single person, 5 minutes for two people working simultaneously), and counting the number of egg masses observed. The sequential sampling method works well with larger crews and involves sampling three branches each on between 20 and 82 trees, depending on the cumulative number of egg masses found ([figure 12](#)). The mean number of egg masses per tree is then calculated. Areas where high numbers or densities of egg masses are observed during sampling are considered to be likely locations of defoliation the following year. However, it is important to note that egg masses are exposed to winter injury, predation, and parasitism prior to hatching the following spring, and first instar larvae may be susceptible to starvation if many egg masses are observed in areas that have already been heavily defoliated.

Larval Sampling

At sites where the EWS average moths per trap threshold (25 moths per trap) is reached, larval sampling may be conducted the following spring to pinpoint injurious population densities (Daterman *et al.*, 1979) and locate areas for treatment, if necessary. Larval sampling may also be useful at sites with a history of DFTM-caused defoliation occurring before trap counts reach the threshold. Sequential sampling for DFTM larvae in the lower crown is performed according to procedures outlined in Mason, 1979. A stretched canvas ‘beat sheet’ is placed below a host tree branch and the branch is hit several times with a stick. Larvae that fall from the branch onto the sheet are inspected and counted. Sequential larval surveys are most useful before widespread defoliation occurs and are of limited use during an outbreak (Mason, 1979). Larval sampling may also be conducted toward the end of an outbreak cycle to confirm DFTM population collapse.

Results of 2024 Survey Season

Trapping

A total of 177 sites were monitored in northern Idaho (138 by IDL and 39 by USFS-R1), and 31 sites were monitored in southern Idaho by USFS-R4 during 2024 ([figures 13 & 14](#)).

The overall mean trap capture for the IDL traps in 2024 was 0.02 moths per trap, compared with 0.007, 1.02, 7.68, and 9.95 moths per trap in 2023, 2022, 2021, and 2020, respectively. An average of 0.03 moths per trap were caught in USFS-R1 traps in 2024, compared with 0.005, 2.01, 2.01, 12.38 moths per trap in 2023, 2022, 2021, and 2020 respectively.

The 2024 USFS-R4 average for southern Idaho was 4.88 moths per trap, compared to 2.9, 11.74, 14.04, and 10.89 moths per trap in 2023, 2022, 2021, and 2020, respectively.

Larval Surveys

In all of Idaho, no larval sampling was conducted (using sequential survey methods outlined in Mason, 1979) in 2024. Sites are usually selected for larval sampling if they are easily accessible and have higher numbers of moths per trap. Several sites had relatively high average capture rates in 2024, but they were not sampled for larvae in 2024 due to the fact that there were low adult trap captures in 2023.

Egg Mass Sampling

Egg mass sampling was not conducted in northern Idaho in 2024 due to very low trap captures. In southern Idaho, egg mass sampling was conducted by USFS-R4 at five sites ([figure 15](#)): three on the Highway 26 corridor near Fairfield, one near the Craters of the Moon National Monument, and one at Kirkham Hollow near Driggs. Three egg masses were found at the Craters of the Moon site. Egg mass sampling was also conducted by IDL in the Deep Creek Mountains at the site of new defoliation in 2024. No egg masses were observed ([figure 15](#)) but sampling was limited due to snow restricting access.

Defoliation

No defoliation was observed in northern Idaho in 2024.

In Southern Idaho, 46 acres of DFTM defoliation were observed through aerial detection surveys in the Sawtooth National Forest east of Ketchum. An additional 972 acres of DFTM defoliation was noted by BLM personnel in 2024 in the Deep Creek Mountains in southern Idaho, south of American Falls (this area was not flown in aerial surveys, defoliation was recorded via ground surveys and Google Earth imagery). In recent years, aerial surveys across southern Idaho recorded 0 acres of defoliation in 2023, 184 acres in 2022, and 3300 acres in 2021 ([figure 10](#)).

Defoliation was also observed on the ground at Craters of the Moon National Monument by the USFS-R4 personnel. Larval surveys are planned for 2025 to better understand outbreak potential in this area. DFTM adult trap captures were elevated in the Hitt Mountains area, however no defoliation was noted in ground surveys, and this area was not flown in 2024. Efforts will be made to fly the area for aerial survey in 2025.

The large outbreak that occurred in southern Idaho from 2017 – 2019, primarily around Cascade, crashed in 2020. Although additional DFTM activity has not been observed in the Cascade area, the area has experienced an increase in tree mortality due to bark beetles as a result of prior defoliation. Fortunately, Douglas-fir beetle activity in the area seems to be dying down for 2024.

Conclusions

In northern Idaho, there was no DFTM activity in 2024, and none is anticipated in 2025. Douglas-fir tussock moth outbreaks in northern Idaho typically occur every 10 years. The next outbreak in northern Idaho may be anticipated around the year 2030. Pheromone trapping is planned for the upcoming years to monitor future outbreaks.

In southern Idaho, predictions are less certain. Elevated trap captures were observed near Craters of the Moon, in the Wood River Valley and the Hitt Mountains. Defoliation was noted east of Ketchum, in the Deep Creek Mountains, and near Craters of the Moon. Egg masses were also observed near Craters of the Moon. This could be a delayed effect from outbreaks in the area over the past several years, but it is unclear. Outbreaks in southern Idaho tend to originate from various DFTM populations on different outbreak cycles. While pheromone traps are effective for predicting when DFTM populations are rising, these are not very useful for predicting exactly where defoliation may occur. Monitoring is planned to verify potential locations with damaging defoliation in 2025.

For additional information (including data, maps, reports, photos, or videos) please contact the Idaho Department of Lands Forest Health Program.

Idaho Department of Lands, 3284 W. Industrial Loop, Coeur d'Alene, ID 83815

(208) 769-1525

Literature Cited

- Daterman, G.E., R.L. Livingston, J.M. Wenz, and L.L. Sower. 1979. Douglas-fir tussock moth handbook. How to use pheromone traps to determine outbreak potential. USDA Agriculture Handbook No. 546. 11 p.
- Kegley, S.J., D. Beckman, and D.S. Wulff. 2004. 2003 North Idaho Douglas-fir tussock moth trapping system report. USDA Forest Service, Northern Region, Forest Health Protection Rpt. 04-6. 7 p. [\(Link\)](#)
- Mason, R.R. 1979. How to sample Douglas-fir tussock moth larvae. USDA Agriculture Handbook 547. 15 p.
- Mason, R.R. and T.R. Torgersen. 1983. Douglas-fir tussock moth handbook. How to predict population trends. USDA Agriculture Handbook No. 610. 7 p.
- Shepherd, R.F., I.S. Otvos, and R.J. Chorney, 1985. Sequential sampling for Douglas-fir tussock moth egg masses in British Columbia (Vol. 15).
- Sturdevant, N. 2000. Douglas-fir tussock moth in northern Idaho and western Montana, current activity and historical patterns. USDA Forest Service, Northern Region, Forest Health Protection Rpt. 00-12. 6 p. [\(Link\)](#)
- Tunnock, S., M. Ollieu, and R.W. Thier, 1985. History of Douglas-fir tussock moth and related suppression efforts in the Intermountain and Northern Rocky Mountain Regions 1927 through 1984. USDA Forest Service Intermountain and Northern Regions. Rpt. 85-13. 51 p. [\(Link-Very large file\)](#)

***This survey and report was partially funded by the USDA Forest Service.
In accordance with Federal law and U.S. Department of Agriculture policy, this
institution is prohibited from discriminating on the basis of race, color, national origin,
sex, age, or disability. (Not all prohibited bases apply to all programs.)
To file a complaint of discrimination, write USDA, Director, Office of Civil Rights,
Room 326-W, Whitten Building, 1400 Independence Avenue, SW, Washington, DC
20250-9410 or call (202) 720-5964 (voice and TDD). USDA is an equal opportunity
provider and employer.***

Figure 1. Adult Douglas-fir tussock moth male (left) and female (right).

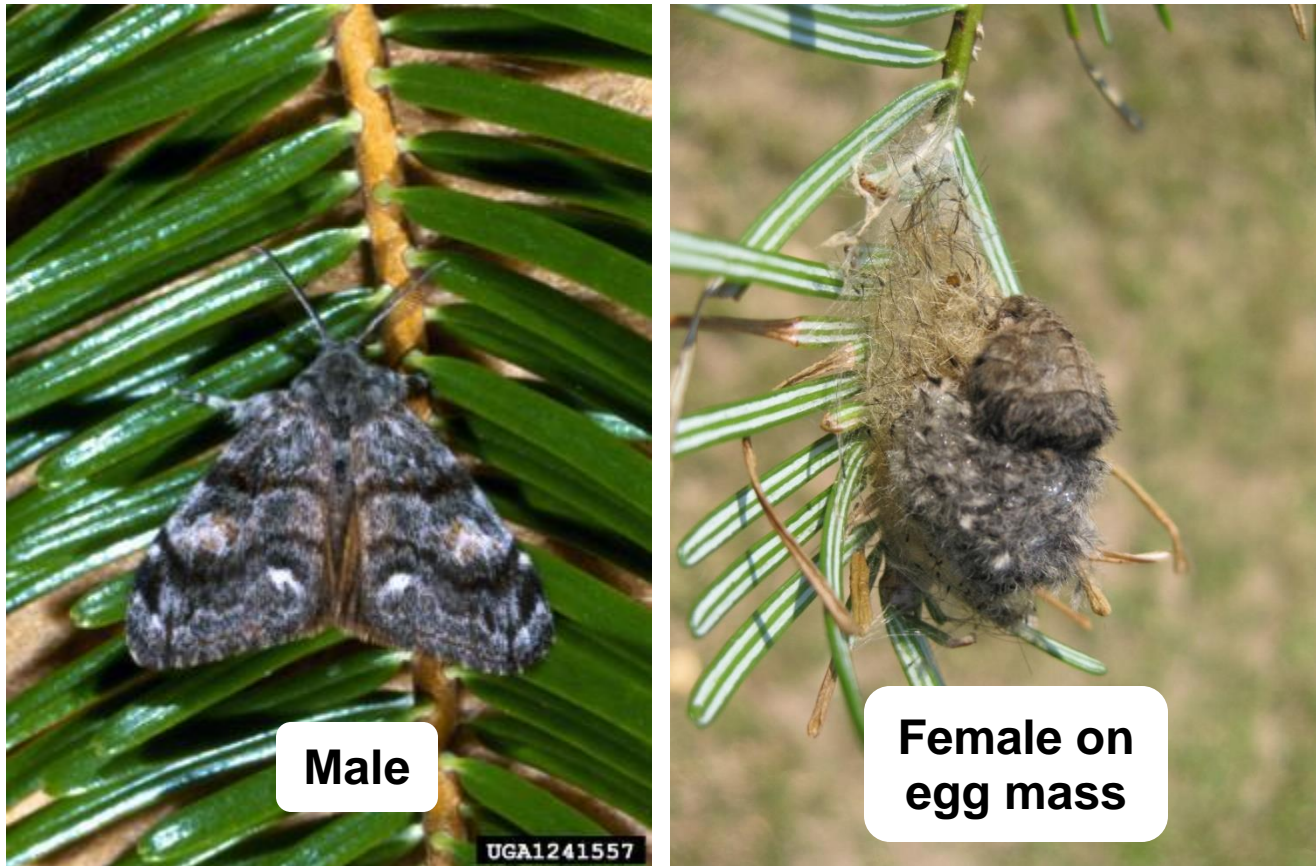


Figure 2. Douglas-fir tussock moth egg mass.



Back to: [Table of Contents](#) [Background and History](#) [Monitoring Methods](#) [Results of 2024 Survey Season](#) [Conclusions](#)

Figure 3. Newly hatched (left) and fully grown (right) Douglas-fir tussock moth larvae.

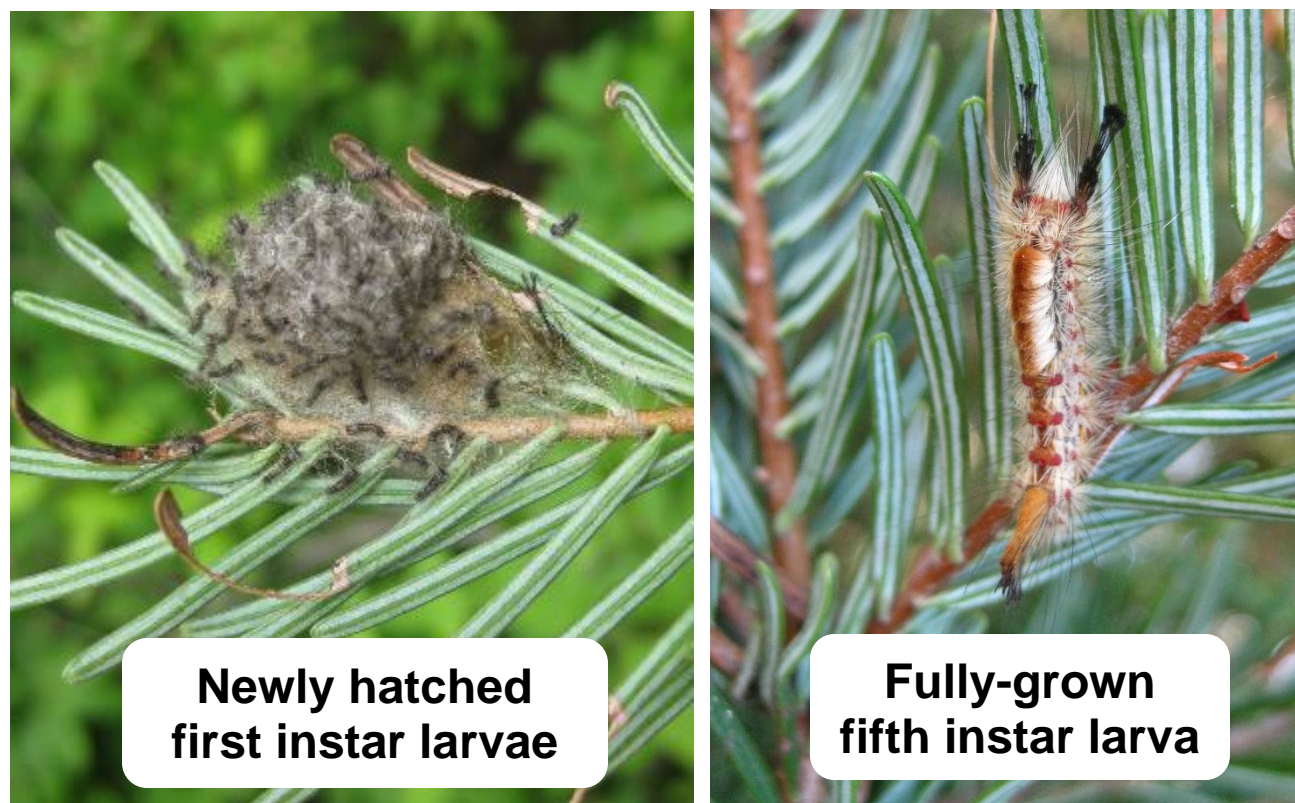


Figure 4. Douglas-fir tussock moth (DFTM)-caused tree defoliation.



Back to: [Table of Contents](#) [Background and History](#) [Monitoring Methods](#) [Results of 2024 Survey Season](#) [Conclusions](#)

Figure 5A. Aerially mapped defoliation by Douglas-fir tussock moth for the 1940s to 2024.
Outbreaks often occur in the same general areas in north Idaho.

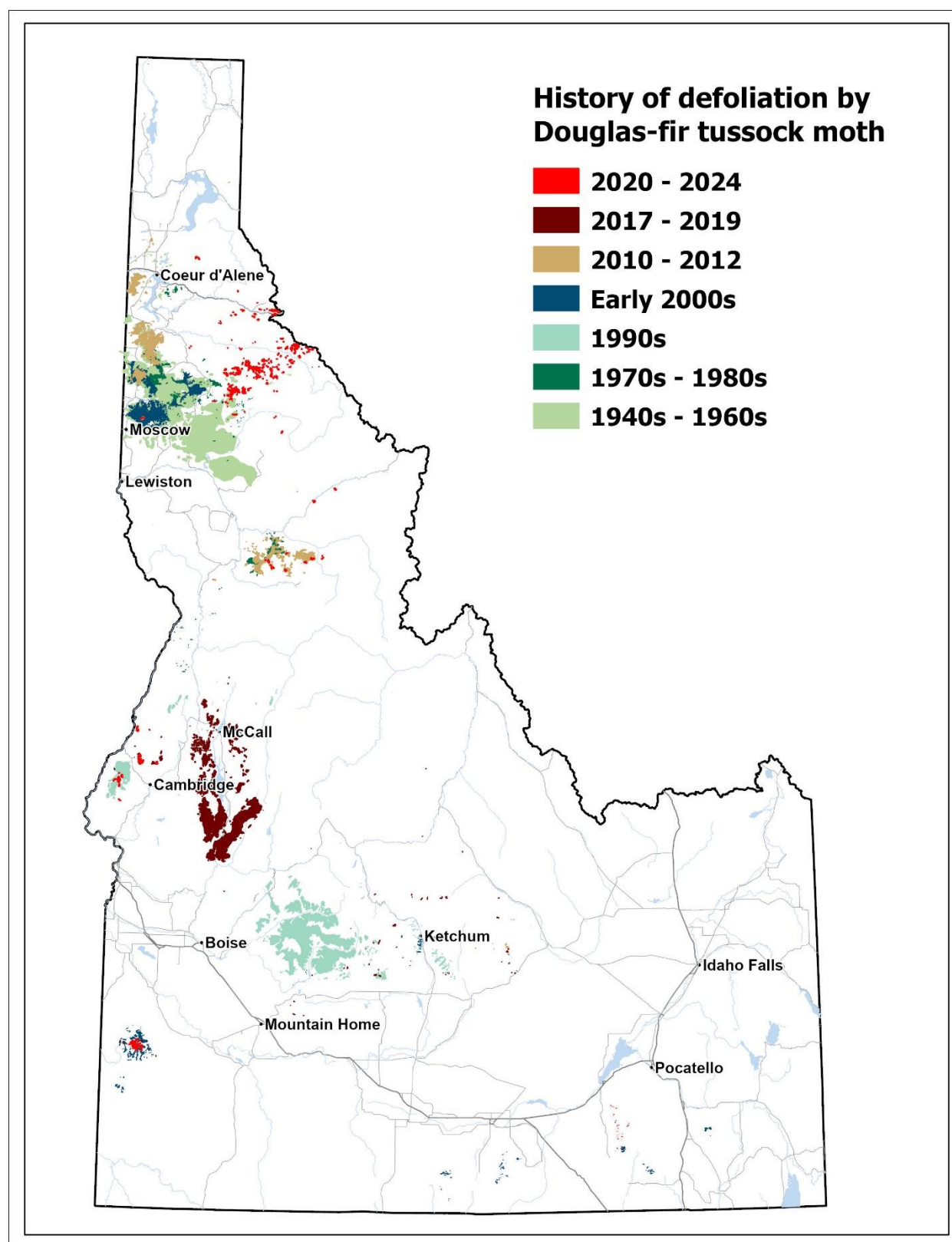
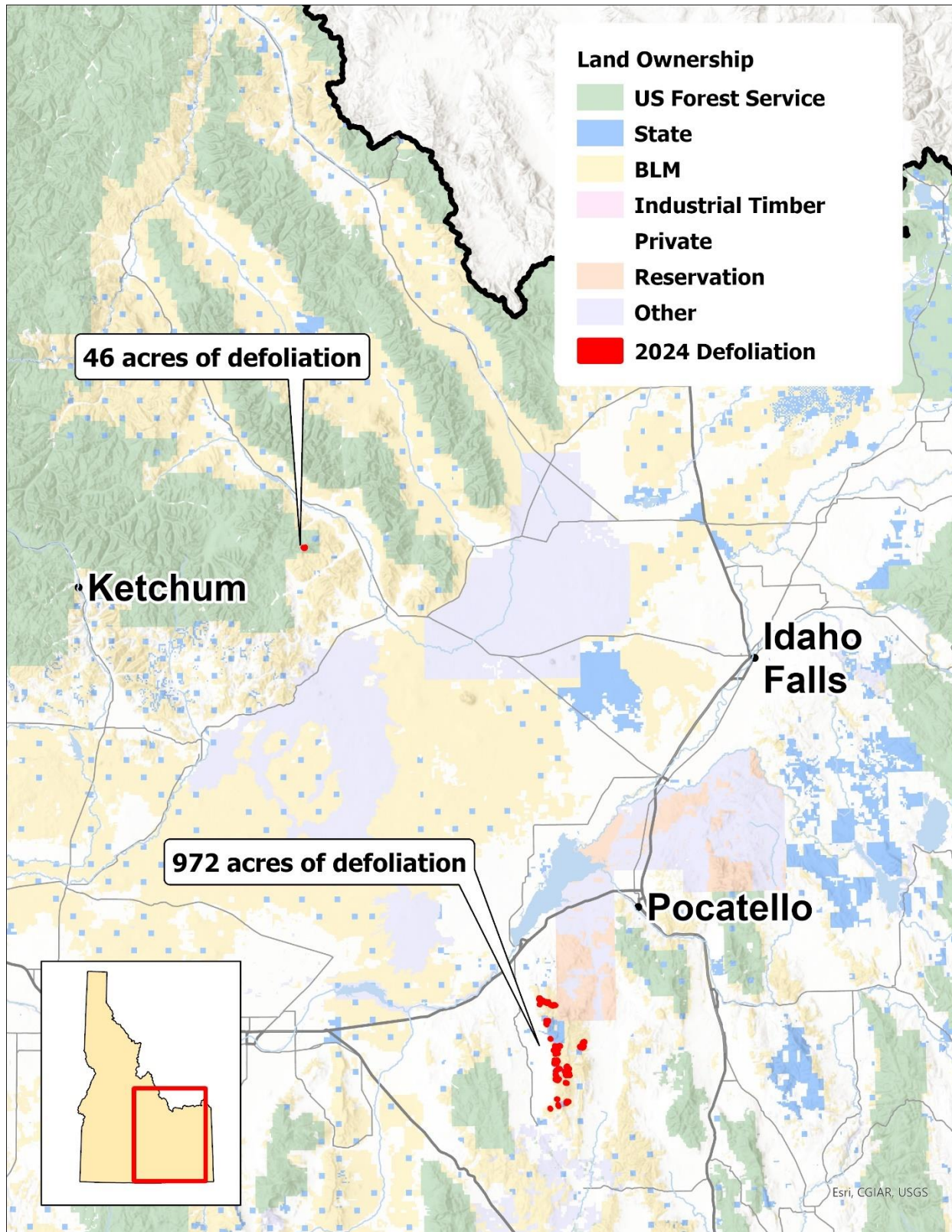


Figure 5B. Mapped defoliation by Douglas-fir tussock moth in 2024.



Back to: [Table of Contents](#) [Background and History](#) [Monitoring Methods](#) [Results of 2024 Survey Season](#) [Conclusions](#)

Figure 6. Early Warning System (EWS) pheromone-baited sticky trap and captured adult male moths.



Figure 7. Mean trap catches of Douglas-fir tussock moth on plots monitored by IDL (top) and visible defoliation in northern Idaho (bottom) from 1977 – 2024.

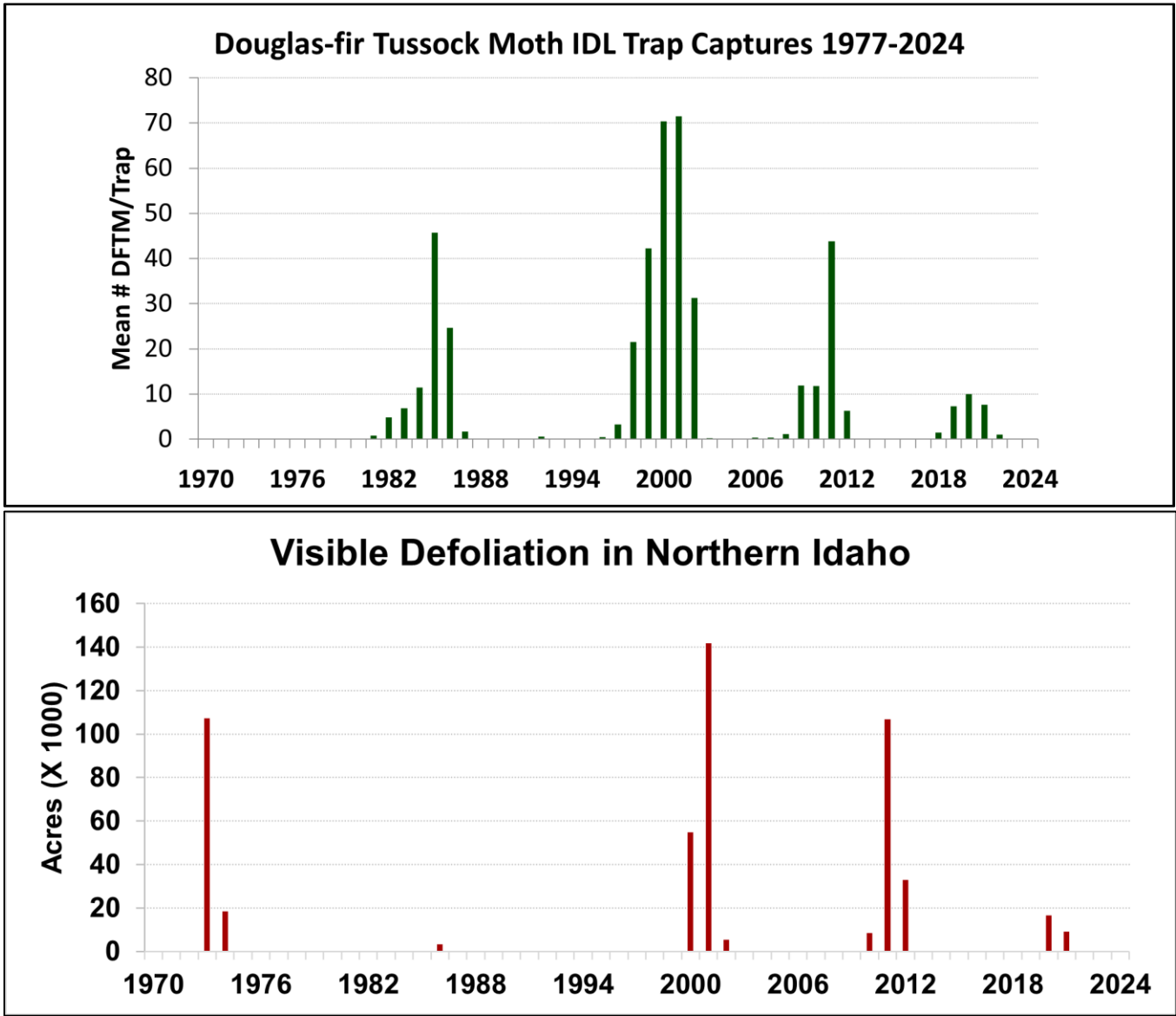


Figure 8. Douglas-fir tussock moth-caused defoliation in northern Idaho and western Montana in 2020 - 2022.

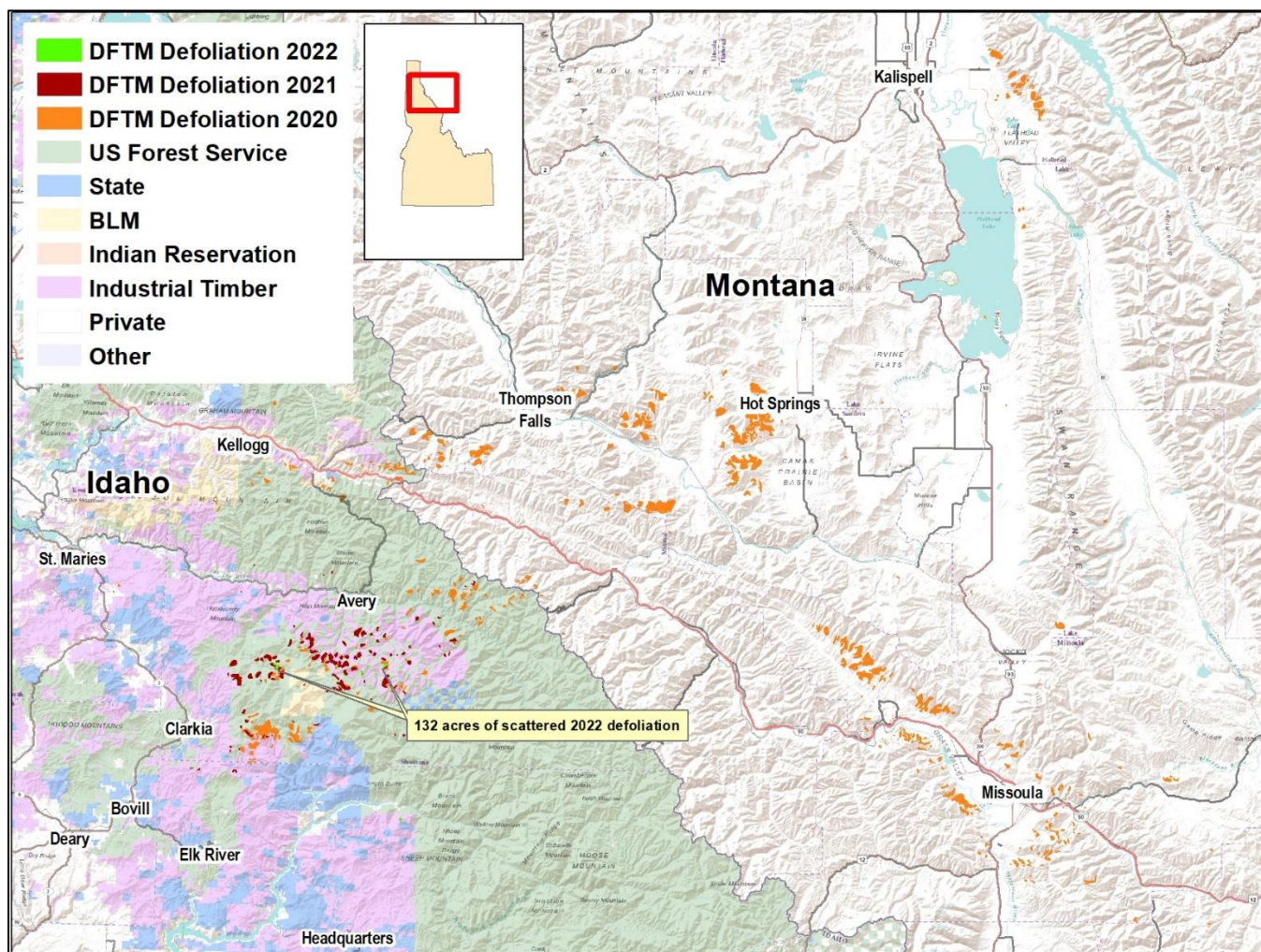


Figure 9A: Photos of severe tree defoliation by Douglas-fir tussock moth at Craters of the Moon National Monument in 2017.



Back to: [Table of Contents](#) [Background and History](#) [Monitoring Methods](#) [Results of 2024 Survey Season](#) [Conclusions](#)

Figure 9B: Photos of very limited tree recovery at Craters of the Moon National Monument in 2018, 2019, and 2020, following severe defoliation by Douglas-fir tussock moth in 2017.
(Photos by Nicole Green)

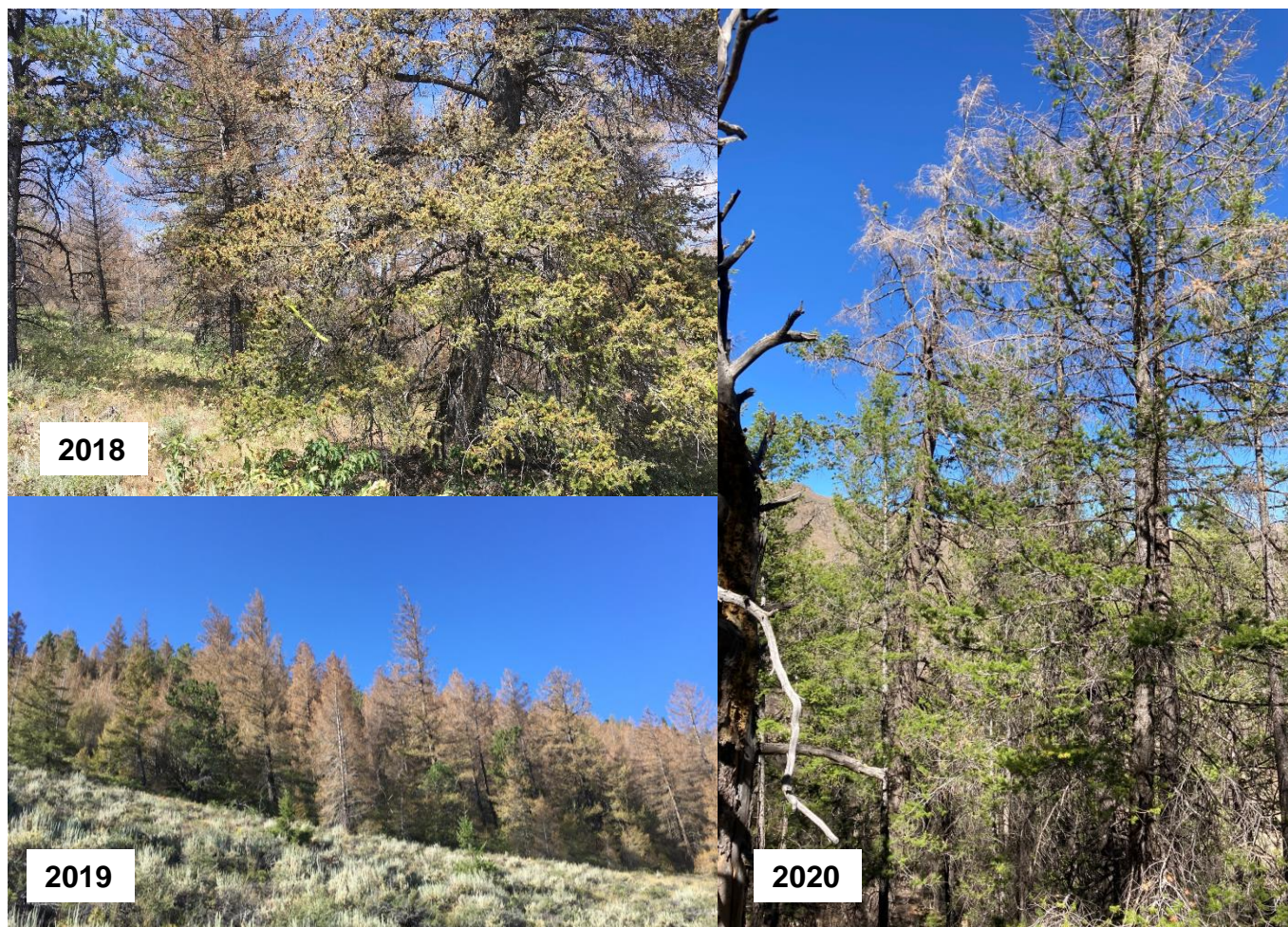


Figure 10. Douglas-fir tussock moth-caused defoliation recorded by Aerial Detection Survey in southwestern Idaho, 2018 - 2022.

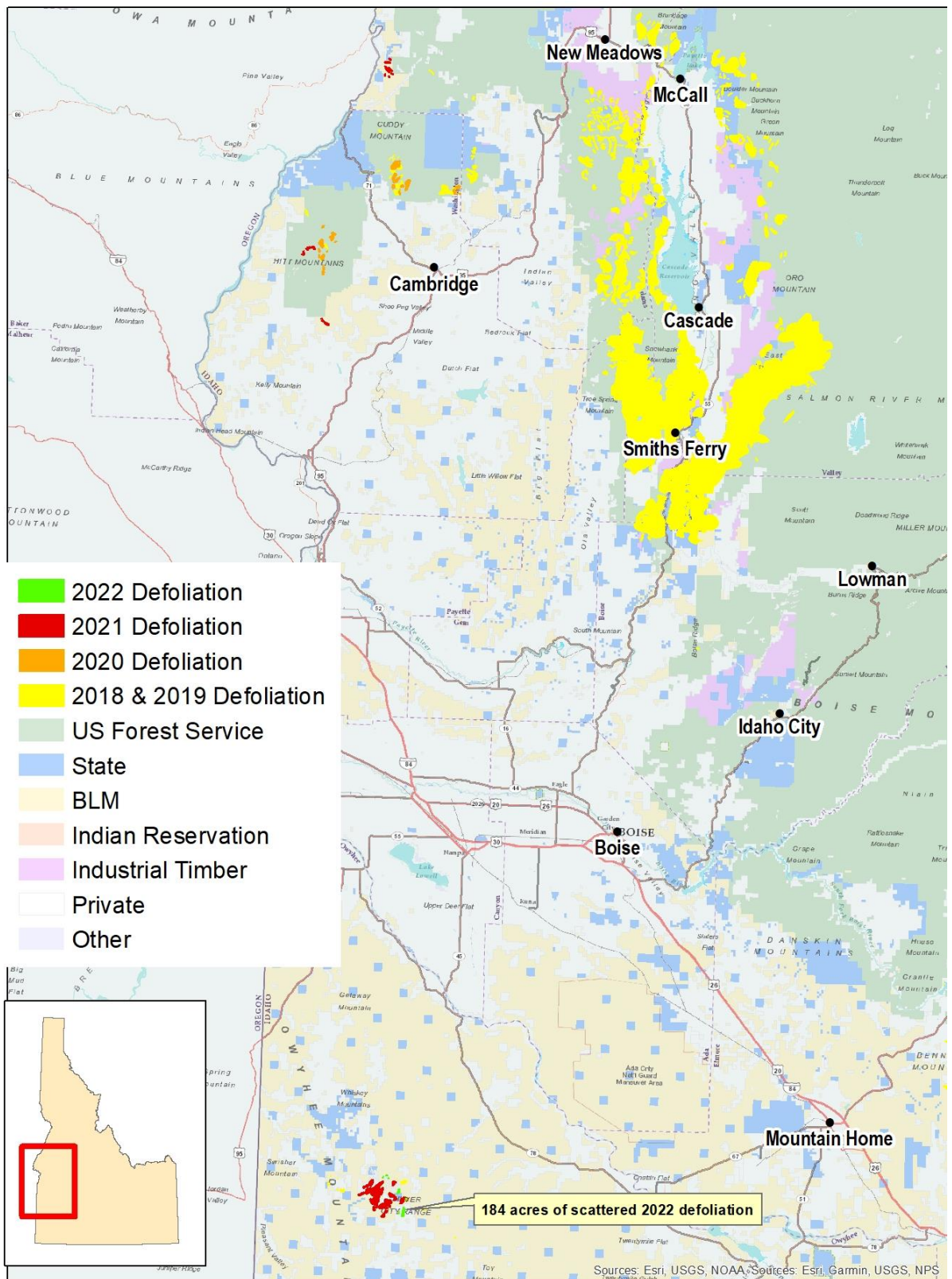
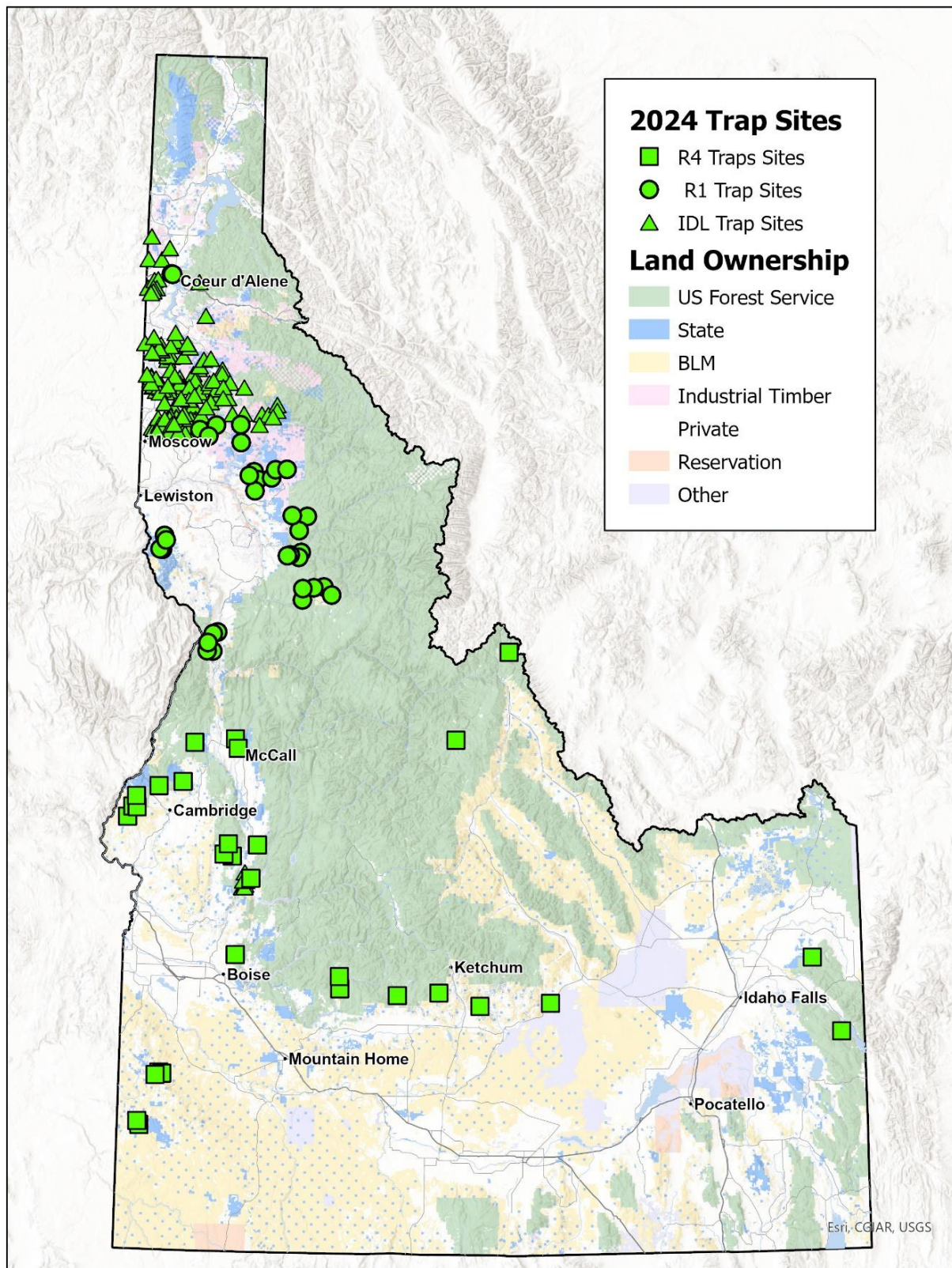


Figure 11. Early Warning System trap distribution in Idaho in 2024.



Back to: [Table of Contents](#) [Background and History](#) [Monitoring Methods](#) [Results of 2024 Survey Season](#) [Conclusions](#)

Figure 12. Data sheet for Shepherd *et al.*, 1985, Douglas-fir tussock moth egg mass sampling method. Data sheet shows number of host trees to be sampled (by inspecting three branches per tree) based on cumulative egg masses observed at a site. If the Lower Stop number of cumulative egg masses has been observed when a given Tree # is reached, sampling at the site is complete and the average number of egg masses per tree is calculated.

Douglas-fir tussock moth egg-mass survey

Plot# _____ Location _____

Observer _____ Date _____

Tree #	# Egg Masses	Cumulative # Egg Masses	Lower Stop #	Tree #	# Egg Masses	Cumulative # Egg Masses	Lower Stop #
2			—	44			18
4			—	46			19
6			—	48			20
8			—	50			21
10			—	52			22
12			—	54			23
14			—	56			24
16			—	58			26
18			—	60			27
20			5	62			28
22			5	64			29
24			6	66			30
26			8	68			31
28			9	70			33
30			10	72			34
32			11	74			35
34			12	76			36
36			13	78			37
38			14	80			38
40			15	82			39
42			17				

Stop sampling when cumulative egg masses reaches 40 or is equal to or below lower stop number.

Total # egg masses _____ = _____
trees

Predicted Defoliation		
L	M	S
Map overleaf		

Figure 13. Map of sites trapped by IDL and R1 for Douglas-fir tussock moth in 2024.

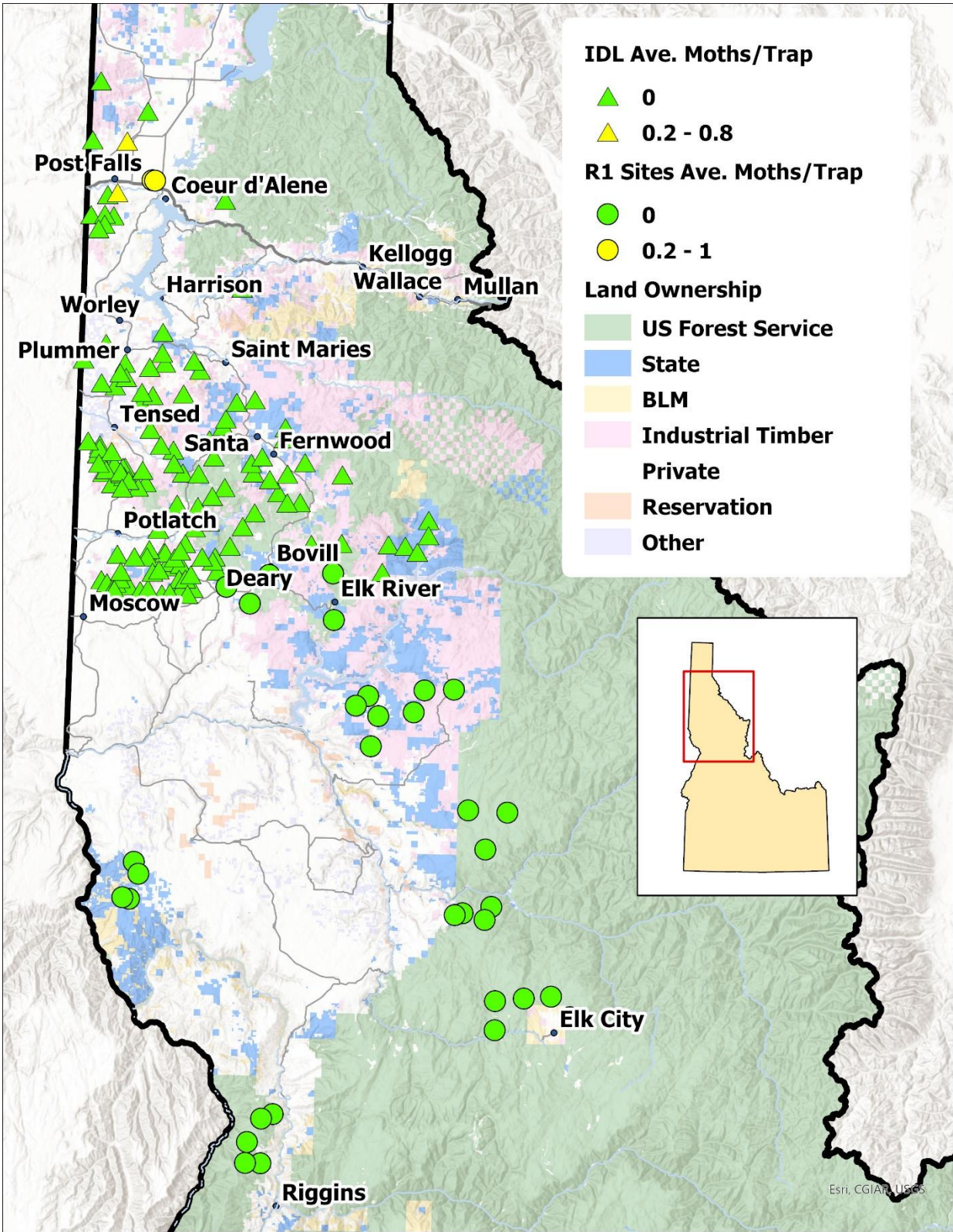


Figure 14. Map of sites trapped by R4 for Douglas-fir tussock moth in 2024.

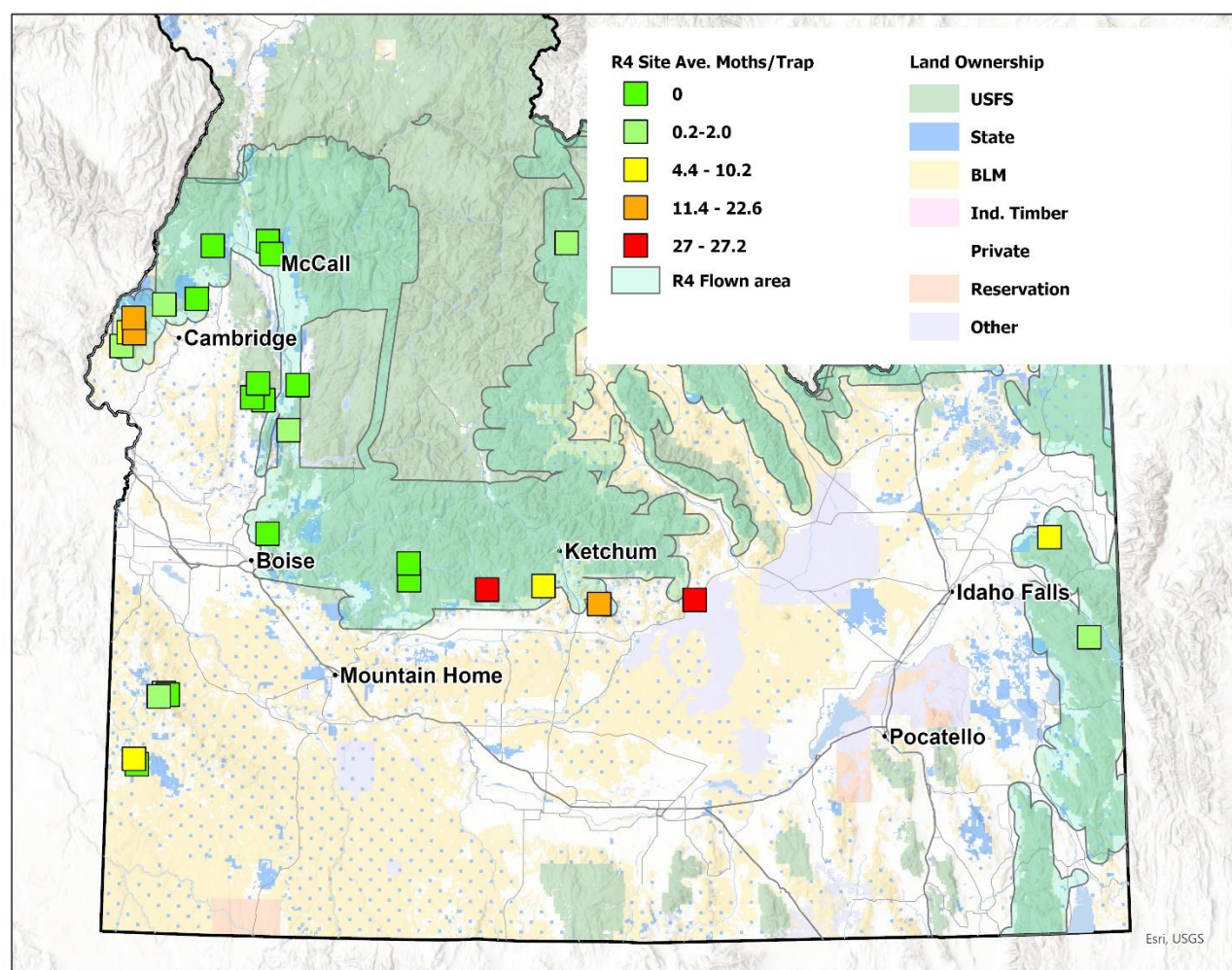
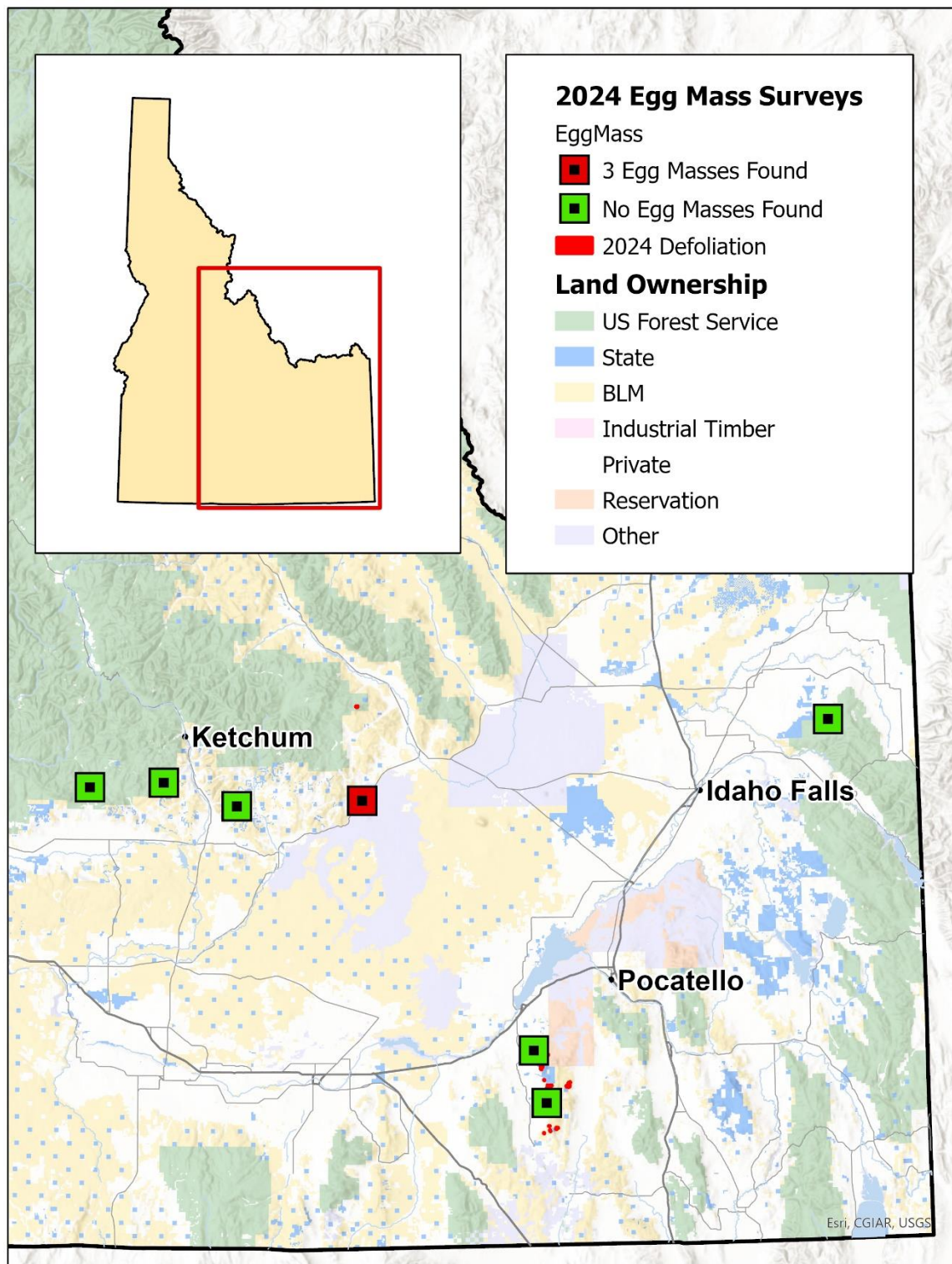


Figure 15. Map of sites surveyed for Douglas-fir tussock moth egg masses in 2024.



Back to: [Table of Contents](#) [Background and History](#) [Monitoring Methods](#) [Results of 2024 Survey Season](#) [Conclusions](#)