

# **FISCAL YEAR 2026 APPROVED TIMBER SALES PLAN**



# IDAHO DEPARTMENT OF LANDS FY26 TIMBER SALE PLAN

July 1, 2025 – June 30, 2026

## TABLE OF CONTENTS

Types of Sales .....	3
Supervisory Area Offices .....	4-5
Administrative Rules and Timber Sale Financing & Purchasing .....	6
Priest Lake.....	8-11
Pend Oreille Lake .....	12-15
Mica.....	16-17
St. Joe .....	18-22
Clearwater .....	23-27
Ponderosa .....	28-30
Maggie Creek .....	31-33
Payette Lakes.....	34-36
Southwestern Idaho.....	37-38
Eastern Idaho .....	39

## IDAHO DEPARTMENT OF LANDS FY26 TIMBER SALE PLAN

July 1, 2025 – June 30, 2026

### [Types of Sales](#)

#### Timber Sales

Timber sales contain an estimated volume of at least 1,000 MBF and exceed the net appraised stumpage value for salvage sales established by the state board of land commissioners. Timber sales are designed to produce maximum stumpage returns to the endowment funds consistent with prudent long-term management practices.

Timber sales are advertised for four weeks in a newspaper in the county where the sale is located, and are sold at public auction.

#### Direct Sales

Direct Sale net appraised stumpage value does not exceed the maximum value established by the State Board of Land Commissioners. This type of sale is to be used to harvest isolated or by-passed parcels of timber of insufficient value and volume to justify a salvage sale. The direct sale is not used where two or more potential purchasers may be interested in bidding on the forest products offered for sale.

The direct sale of forest product stumpage is made without advertisement as authorized by the Director.

## IDAHO DEPARTMENT OF LANDS FY26 TIMBER SALE PLAN

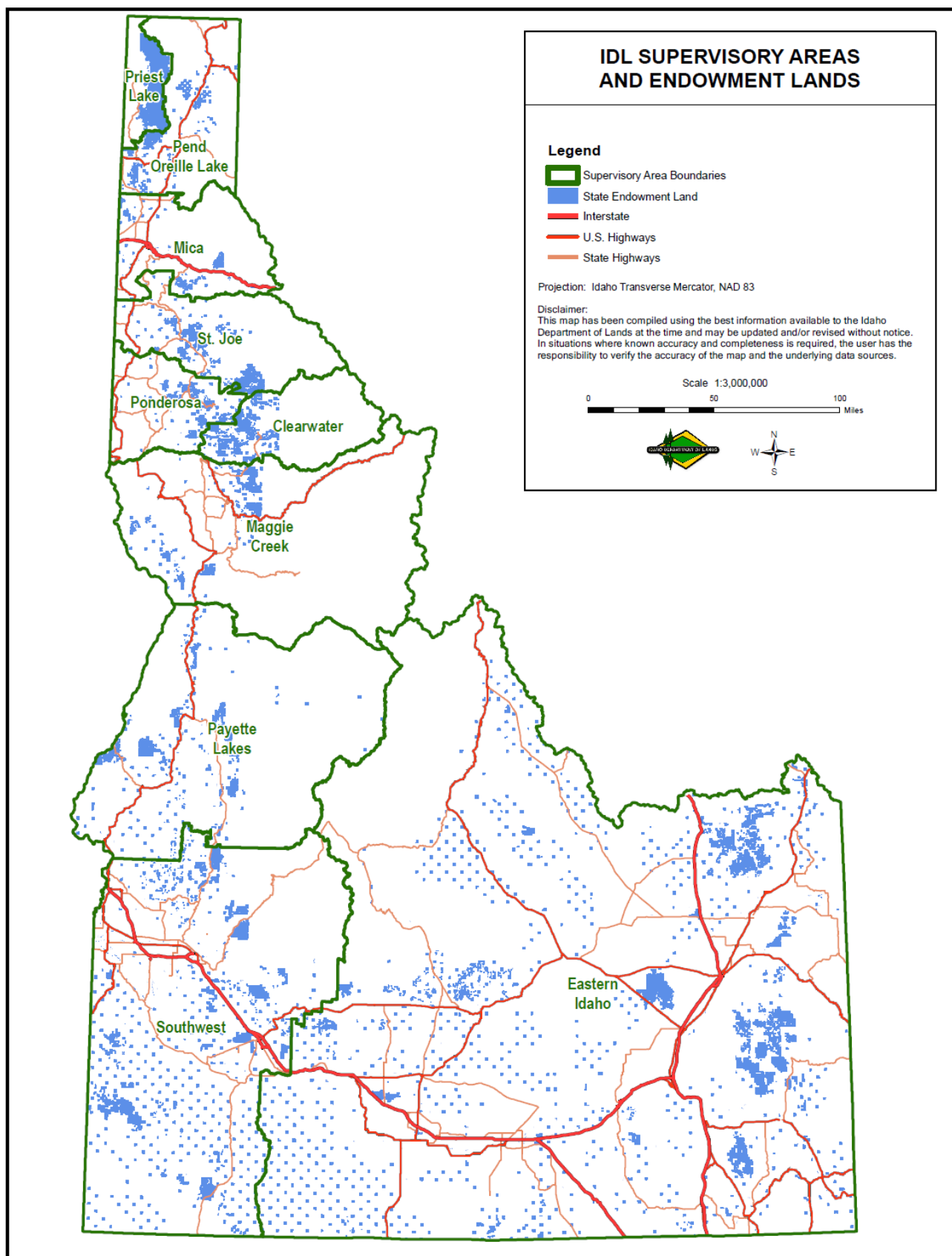
July 1, 2025 – June 30, 2026

### [Supervisory Area Offices](#)

<b><i>SUPERVISORY AREA</i></b>	<b><i>AREA SUPERVISOR</i></b>	<b><i>PHONE</i></b>
<b>Priest Lake</b> 4053 Cavanaugh Bay Road Coolin, ID 83821	Dan Brown	(208) 443-2516
<b>Pend Oreille Lake</b> 2550 Highway 2 West Sandpoint, ID 83864	Erik Sjoquist	(208) 263-5104
<b>Mica</b> 3706 Industrial Avenue S Coeur d'Alene, ID 83815	TBD	(208) 769-1577
<b>St. Joe</b> 1806 Main Avenue St. Maries, ID 83861	Tony Brede	(208) 245-4551
<b>Ponderosa</b> 3130 Highway 3 Deary, ID 83823	Chris Tretter	(208) 877-1121
<b>Clearwater</b> 10230 Highway 12 Orofino, ID 83544	Jay Sila	(208) 476-4587
<b>Maggie Creek</b> 913 Third Street Kamiah ID 83536	Dave Schwartz	(208) 935-2141
<b>Payette Lakes</b> 555 Deinhard Lane McCall, ID 83638	Scott Corkill	(208) 634-7125
<b>Southwest/South Central</b> 8355 W. State Street Boise, ID 83703	Dean Johnson	(208) 334-3488
<b>Eastern Idaho</b> 3563 Ririe Highway Idaho Falls, ID 83401	Ryan Woodland	(208) 525-7167

# IDAHO DEPARTMENT OF LANDS FY26 TIMBER SALE PLAN

July 1, 2025 – June 30, 2026



## IDAHO DEPARTMENT OF LANDS FY26 TIMBER SALE PLAN

July 1, 2025 – June 30, 2026

### Administrative Rules and Purchaser Sale Requirements

*Links to detailed information on the internet are provided below.*

#### Administrative Rules of the Department of Lands

[20.02.14 – Selling Forest Products on State-Owned Endowment Lands](#)

For information regarding timber sale procedures, bidding procedures, bonding requirements and insurance requirements, click on the link below.

[Purchaser Sale Requirements](#)

# Idaho Department of Lands Fiscal Year 2026 Timber Sale Plan

The Fiscal Year 2026 Timber Sale Plan was presented and approved by the Idaho Board of Land Commissioners at the April 2025 Land Board meeting.

All timber sales listed on the 2026 Proposed Timber Sale Plan were available for public review on the Notice of Proposed Future Sales on the IDL timber sale website since May 2024.

Comments for this plan were received through March 31, 2025.

Jeremy Shawver  
Idaho Department of Lands  
Section Manager Timber Sales/Contract Admin  
Email address: [jshawver@idl.idaho.gov](mailto:jshawver@idl.idaho.gov)  
3284 W. Industrial Loop  
Coeur d'Alene, ID 83815





# IDAHO DEPARTMENT OF LANDS FISCAL YEAR 2026 TIMBER SALE PLAN

July 1, 2025 - June 30, 2026

## Priest Lake Supervisory Area

Sale Name:

### Lucky Logger

Estimated Auction: Summer 2026

Location: 19 Miles NE of Coolin

Drainages: Lion Creek and Lucky Creek

Class I Streams: No

Class II Streams: Yes

Silvicultural Prescription: Clearcut, Seedtree, Shelterwood

Harvest System: Cable Yarding, Ground - Based

APPROXIMATE

ACREAGE:  
330 acres

VOLUME:  
3,000 MBF

### Timber Sale Legal Description

Subsection	Section	Township	Range
Pts Gov Lots 5, Pts Gov Lots 5	06	062N	003W
Pts Gov Lots 5, Pts Gov Lots 5	06	062N	003W
Pts Gov Lots 1, 2, 3, 4, Pts S2NE, Pts S2NW, Pts N2SE	01	062N	004W
Pts Gov Lots 1, Pts SENE, Pts SENW, Pts E2SW, Pts SE	02	062N	004W
Pts NWSE, Pts S2SE	36	063N	004W

Sale Name:

### Mow Caribou

Estimated Auction: Summer 2026

Location: 20 Miles N. of Coolin

Drainages: Caribou Creek

Class I Streams: Yes

Class II Streams: Yes

Silvicultural Prescription: Overstory Removal, Seedtree, Shelterwood

Harvest System: Ground - Based

APPROXIMATE

ACREAGE:  
307 acres

VOLUME:  
3,000 MBF

### Timber Sale Legal Description

Subsection	Section	Township	Range
Pts Gov Lots 4	03	062N	004W
Pts Gov Lots 1, 2, Pts S2NE, Pts N2SE	04	062N	004W
Pts S2SW	22	063N	004W
Pts NESW, Pts S2SW	23	063N	004W
Pts NW	26	063N	004W
Pts W2NE, Pts NW, Pts SW, Pts W2SE	27	063N	004W
Pts N2NE, Pts NW, Pts N2SW, Pts SWSW	34	063N	004W



# IDAHO DEPARTMENT OF LANDS FISCAL YEAR 2026 TIMBER SALE PLAN

July 1, 2025 - June 30, 2026

## Priest Lake Supervisory Area

Sale Name:

### Northface

Estimated Auction: Winter 2025  
Location: 5 Miles SE of Coolin  
Drainages: North Fork East River  
Class I Streams: No  
Class II Streams: Yes  
Silvicultural Prescription: Clearcut  
Harvest System: Cable Yarding, Ground - Based

APPROXIMATE

ACREAGE:  
258 acres

VOLUME:  
4,500 MBF

### Timber Sale Legal Description

Subsection	Section	Township	Range
Pts SWSE	19	059N	003W
Pts NW, Pts E2SW, Pts W2SE	20	059N	003W
Pts N2NW	29	059N	003W
Pts Gov Lots 2, Pts N2NE, Pts NENW	30	059N	003W
Pts N2NE, Pts SENE, Pts SENW, Pts N2SE, SWNE	25	059N	004W
Pts N2NE, Pts SENE	36	059N	004W

Sale Name:

### Old Horton Cedar

Estimated Auction: Fall 2026  
Location: 8 Miles NE of Coolin  
Drainages: Horton Creek  
Class I Streams: Yes  
Class II Streams: Yes  
Silvicultural Prescription: Clearcut, Seedtree  
Harvest System: Cable Yarding, Ground - Based

APPROXIMATE

ACREAGE:  
618 acres

VOLUME:  
6,500 MBF  
750 Poles

### Timber Sale Legal Description

Subsection	Section	Township	Range
Pts Gov Lots 1, 2, 3, 4, Pts SWNW	01	060N	004W
Pts Gov Lots 1, Pts S2NE, Pts SENW, Pts N2SE	02	060N	004W
Pts Gov Lots 4, Pts SESW	30	061N	003W
Pts Gov Lots 1, 2, 3, 4, Pts Gov Lots 1, 2, 3, 4, Pts E2NW	31	061N	003W
Pts Gov Lots 1, 2, 3, 4, Pts Gov Lots 1, 2, 3, 4, Pts E2NW	31	061N	003W
Pts W2NE, Pts E2NW, Pts E2SW, Pts W2SE	25	061N	004W
Pts NE, Pts E2NW, Pts S2SW, Pts SE	36	061N	004W

# IDAHO DEPARTMENT OF LANDS FISCAL YEAR 2026 TIMBER SALE PLAN

July 1, 2025 - June 30, 2026

## Priest Lake Supervisory Area

Sale Name:

### Outlet Mountain Dew

Estimated Auction: Spring 2026

Location: 3 Miles W. of Coolin and 5 Miles NE of Coolin

Drainages: Priest River and Soldier Creek

Class I Streams: Yes

Class II Streams: Yes

Silvicultural Prescription: Clearcut

Harvest System: Cable Yarding, Ground - Based

APPROXIMATE

ACREAGE:  
1,389 acres

VOLUME:  
4,600 MBF  
500 Poles

### Timber Sale Legal Description

Subsection	Section	Township	Range
Pts Gov Lots 3, 4, 5, 6, 7, Pts SESW, Pts SWSE, SWSW	05	059N	004W
Pts Gov Lots 14	06	059N	004W
Pts Gov Lots 11, 5, 8, 9, Pts NENE, Pts SWNE	07	059N	004W
Pts NW	08	059N	004W
Pts Gov Lots 5, 7, 8, Pts NENW	18	059N	004W
Pts Gov Lots 1	13	059N	005W
Pts SWSW	17	060N	003W
Pts Gov Lots 3, 4, Pts E2SW, Pts N2SE, Pts SESE, SWSE	18	060N	003W
NENE, Pts NWNE, Pts S2NE, Pts NENW, Pts E2SE	19	060N	003W
Pts W2NW, Pts NWSW, Pts S2SW	20	060N	003W
Pts NWNW, Pts SW	29	060N	003W
Pts Gov Lots 4, Pts Gov Lots 4, Pts NE, Pts E2SW, Pts SE	30	060N	003W
Pts Gov Lots 4, Pts Gov Lots 4, Pts NE, Pts E2SW, Pts SE	30	060N	003W
Pts Gov Lots 1, 2, Pts Gov Lots 1, 2, Pts N2NE, Pts NENW	31	060N	003W
Pts Gov Lots 1, 2, Pts Gov Lots 1, 2, Pts N2NE, Pts NENW	31	060N	003W
Pts SESE	25	060N	004W
Pts N2NE, Pts SENE	36	060N	004W

Sale Name:

### Sundance

Estimated Auction: Winter 2025

Location: 3 Miles E. of Coolin

Drainages: Chase Creek and Lost Creek

Class I Streams: No

Class II Streams: Yes

Silvicultural Prescription: Clearcut

Harvest System: Cable Yarding, Ground - Based

APPROXIMATE

ACREAGE:  
240 acres

VOLUME:  
3,000 MBF

### Timber Sale Legal Description

Subsection	Section	Township	Range
Pts SE	11	059N	004W
Pts SWNE, Pts S2NW, Pts N2SW, Pts SESW, Pts NWSE, SWSW	12	059N	004W
Pts N2NW	13	059N	004W
Pts NENE	14	059N	004W

IDAHO DEPARTMENT OF LANDS FISCAL YEAR 2026 TIMBER SALE PLAN

July 1, 2025 - June 30, 2026

**Priest Lake  
Supervisory Area**

Sale Name:

**Two Goose Cedar**

Estimated Auction: Fall 2026

Location: 15 miles north of Coolin

Drainages: Priest Lake

Class I Streams: No

Class II Streams: Yes

Silvicultural Prescription: Clearcut

Harvest System: Cable Yarding, Ground - Based

APPROXIMATE

ACREAGE:  
150 acres

VOLUME:  
3,400 MBF  
750 Poles

Timber Sale Legal Description

Subsection	Section	Township	Range
Pts Gov Lots 2	02	061N	004W
Pts SWSE	26	062N	004W
Pts NWNE, Pts S2NE, Pts E2SE, W2SE	35	062N	004W

**Supervisory Area Totals: Priest Lake**

Supervisory Area Acres: 3,292 acres

Supervisory Area Total Sawlog: 28,000 MBF

Supervisory Area Total Cedar Poles: 2,000 Cedar Poles

# IDAHO DEPARTMENT OF LANDS FISCAL YEAR 2026 TIMBER SALE PLAN

July 1, 2025 - June 30, 2026

## Pend Oreille Lake Supervisory Area

Sale Name:

### Almost Round Cedar

Estimated Auction: Summer 2026

Location: 5 miles southwest of Sandpoint, ID

Drainages: Pend O'reile and Round Lake drainages

Class I Streams: Yes

Class II Streams: Yes

Silvicultural Prescription: Clearcut, Seedtree

Harvest System: Ground - Based, Ground - Based (Tethered), Prescriptive Yarding

APPROXIMATE

ACREAGE:  
263 acres

VOLUME:  
5,915 MBF  
200 Poles

### Timber Sale Legal Description

Subsection	Section	Township	Range
Pts Gov Lots 3, Pts NW, Pts NESW, Pts S2SW, Pts SE	36	056N	003W
Pts Gov Lots 5, 6, Pts SW, Pts S2SE	36	057N	003W

Sale Name:

### Caesar Ton

Estimated Auction: Summer 2025

Location: 7 miles west of Naples, ID

Drainages: Roman Nose Creek and Fall Creek

Class I Streams: Yes

Class II Streams: Yes

Silvicultural Prescription: Clearcut, ROW

Harvest System: Ground - Based

APPROXIMATE

ACREAGE:  
161 acres

VOLUME:  
4,945 MBF

### Timber Sale Legal Description

Subsection	Section	Township	Range
Pts. SE; Pts. S2NE	35	61N	02W
Pts. W2SW; Pts. SESW; Pts. SWSE	36	61N	02W

Sale Name:

### Headwaters Cedar

Estimated Auction: Summer 2025

Location: 5 miles southeast of Naples, ID

Drainages: Twentymile and Trail Creek Drainages

Class I Streams: No

Class II Streams: Yes

Silvicultural Prescription: Clearcut, ROW

Harvest System: Cable Yarding, Ground - Based, Prescriptive Yarding

APPROXIMATE

ACREAGE:  
237 acres

VOLUME:  
3,545 MBF  
700 Poles

### Timber Sale Legal Description

Subsection	Section	Township	Range
Pts N2NE, Pts N2NW, Pts S2SW, Pts SWSE, S2NE, S2NW, N2SW, N2SE, SESE	13	060N	001E
Pts N2NE, Pts SWNE, Pts SENW, SENE	14	060N	001E

# IDAHO DEPARTMENT OF LANDS FISCAL YEAR 2026 TIMBER SALE PLAN

July 1, 2025 - June 30, 2026

## Pend Oreille Lake Supervisory Area

Sale Name:

### Lost Cougar

Estimated Auction: Spring 2026  
Location: 13 miles northeast of Priest River, ID  
Drainages: Fox Creek/N.F. Big Creek  
Class I Streams: Yes  
Class II Streams: Yes  
Silvicultural Prescription: Clearcut  
Harvest System: Prescriptive Yarding

APPROXIMATE  
ACREAGE: 90 acres  
VOLUME: 2,690 MBF

### Timber Sale Legal Description

Subsection	Section	Township	Range
Pts Gov Lots 4	04	057N	003W
Pts Gov Lots 1, 2, 3, 6, 7	05	057N	003W

Sale Name:

### Macs Drive Thru

Estimated Auction: Winter 2026  
Location: 5 miles southeast of Priest River, ID  
Drainages: Curtis Creek  
Class I Streams: No  
Class II Streams: Yes  
Silvicultural Prescription: Clearcut, Overstory Removal, Seedtree  
Harvest System: Ground - Based, Prescriptive Yarding

APPROXIMATE  
ACREAGE: 286 acres  
VOLUME: 4,965 MBF

### Timber Sale Legal Description

Subsection	Section	Township	Range
Pts SESE	20	055N	005W
Pts S2SW, Pts NESE, Pts SWSE	21	055N	005W
Pts NWSW	22	055N	005W
Pts W2NW, Pts NWSW	27	055N	005W
NENW, Pts NE, Pts NWNW, Pts S2NW, Pts NESW, Pts NESE	28	055N	005W

# IDAHO DEPARTMENT OF LANDS FISCAL YEAR 2026 TIMBER SALE PLAN

July 1, 2025 - June 30, 2026

## Pend Oreille Lake Supervisory Area

Sale Name:

### Newport Ridge Cedar

Estimated Auction: Winter 2026  
Location: 4 miles northwest of Priest River, ID  
Drainages: Pine Creek, Saddler Creek  
Class I Streams: No  
Class II Streams: Yes  
Silvicultural Prescription: Clearcut, Seedtree  
Harvest System: Prescriptive Yarding

APPROXIMATE  
ACREAGE: 215 acres  
VOLUME: 3,320 MBF  
200 Poles

### Timber Sale Legal Description

Subsection	Section	Township	Range
Pts SWSW	04	056N	005W
Gov Lots 1, Pts Gov Lots 2, 3, 4, Pts S2NE, Pts S2NW, Pts NESW, Pts SESE	05	056N	005W
Pts N2NE	08	056N	005W
Pts N2NW	09	056N	005W

Sale Name:

### Riley Cedar

Estimated Auction: Summer 2025  
Location: 5 miles north of Laclede, ID  
Drainages: Riley Creek  
Class I Streams: Yes  
Class II Streams: Yes  
Silvicultural Prescription: Seedtree  
Harvest System: Ground - Based

APPROXIMATE  
ACREAGE: 175 acres  
VOLUME: 3,340 MBF  
2,000 Poles

### Timber Sale Legal Description

Subsection	Section	Township	Range
Pts NWNW, Pts S2NW, Pts E2SW, Pts SWSE, W2SW	36	057N	004W

Sale Name:

### Smith West OSR

Estimated Auction: Fall 2025  
Location: 5 miles north of Bonners Ferry, ID  
Drainages: Smith Lake  
Class I Streams: No  
Class II Streams: No  
Silvicultural Prescription: Overstory Removal  
Harvest System: Ground - Based

APPROXIMATE  
ACREAGE: 99 acres  
VOLUME: 355 MBF

### Timber Sale Legal Description

Subsection	Section	Township	Range
Pts E2NW, Pts NESW, Pts W2SE	36	063N	001E

# IDAHO DEPARTMENT OF LANDS FISCAL YEAR 2026 TIMBER SALE PLAN

July 1, 2025 - June 30, 2026

## Pend Oreille Lake Supervisory Area

Sale Name:

### Strong 15

Estimated Auction: Summer 2025  
Location: 4 miles south of Priest River, ID  
Drainages: Strong Creek, Fish Creek  
Class I Streams: No  
Class II Streams: Yes  
Silvicultural Prescription: Clearcut, Seedtree  
Harvest System: Ground - Based, Prescriptive Yarding

APPROXIMATE

ACREAGE:  
150 acres

VOLUME:  
3,985 MBF

### Timber Sale Legal Description

Subsection	Section	Township	Range
Pts SENE, Pts E2SE	10	055N	005W
Pts SWNW, Pts SW	11	055N	005W
Pts NWNW	14	055N	005W
Pts NENE, Pts NESW, Pts SE	15	055N	005W

Sale Name:

### Upper Lakes Cedar

Estimated Auction: Winter 2026  
Location: 3 miles northeast of Elmira  
Drainages: Sand Creek  
Class I Streams: Yes  
Class II Streams: Yes  
Silvicultural Prescription: Overstory Removal, Seedtree  
Harvest System: Ground - Based, Prescriptive Yarding

APPROXIMATE

ACREAGE:  
254 acres

VOLUME:  
3,360 MBF  
1,200 Poles

### Timber Sale Legal Description

Subsection	Section	Township	Range
Pts Gov Lots 3, 4, Pts Gov Lots 3, 4, Pts SENW	06	059N	001E
Pts Gov Lots 1, 2, 3, 4, Pts SESW	31	060N	001E
Pts SESE	25	060N	001W
Pts NENE, Pts S2NE, Pts SE	36	060N	001W

## Supervisory Area Totals: Pend Oreille Lake

Supervisory Area Acres: 1,931 acres  
Supervisory Area Total Sawlog: 36,420 MBF  
Supervisory Area Total Cedar Poles: 4,300 Cedar Poles



# IDAHO DEPARTMENT OF LANDS FISCAL YEAR 2026 TIMBER SALE PLAN

July 1, 2025 - June 30, 2026

## Mica Supervisory Area

Sale Name:

### Bald Larch

Estimated Auction: Spring 2026

Location: 4 Miles SW Cataldo

Drainages: Baldy Creek, Larch Creek, Little Baldy Creek

Class I Streams: Yes

Class II Streams: Yes

Silvicultural Prescription: Clearcut, Overstory Removal

Harvest System: Ground - Based, Prescriptive Yarding

APPROXIMATE

ACREAGE:  
854 acres

VOLUME:  
6,200 MBF

### Timber Sale Legal Description

Subsection	Section	Township	Range
Pts NENW, NWNW, Pts S2NW, Pts NWSW	20	48N	01E
SW, S2SEC	29	48N	01E
Pts W2SE, SESE	30	48N	01E
SESE	23	48N	01W
Pts Gov Lots 2, 3 and 4, Pts SWNE, SENW, Pts NESW, S2SW, Pts W2SE	24	48N	01W
Pts N2NE, Pts N2NW, Pts SENE	25	48N	01W

Sale Name:

### Signal Hauser Scraps

Estimated Auction: 2026

Location: 9 miles W Coeur d'Alene

Drainages: Mica Creek, Spokane River

Class I Streams: Unk

Class II Streams: Yes

Silvicultural Prescription: Clearcut, Seedtree

Harvest System: Ground - Based, Prescriptive Yarding

APPROXIMATE

ACREAGE:  
487 acres

VOLUME:  
6,030 MBF

### Timber Sale Legal Description

Subsection	Section	Township	Range
E2NE, Pts SE, Pts W2NE, Pts SENW, Pts E2SW,	16	49N	05W
Pts N2NE, Pts SWNE, Pts N2NW, Pts SENW, Pts NESW, Pts S2SW, Pts SE	16	50N	05W
Pts Gov Lots 1, 2, 3, 4	31	52N	05W
Pts Gov Lots 1, 2, 3, Pts NE, Pts SENW, Pts E2SW, Pts E2SE, W2SE	36	52N	06W

# IDAHO DEPARTMENT OF LANDS FISCAL YEAR 2026 TIMBER SALE PLAN

July 1, 2025 - June 30, 2026

## Mica Supervisory Area

Sale Name:

**Upper Thomas**

Estimated Auction: Fall 2025

Location: 5 miles NE Pinehurst

Drainages: Thomas Creek

Class I Streams: No

Class II Streams: Yes

Silvicultural Prescription: Clearcut, Shelterwood

Harvest System: Ground - Based, Prescriptive Yarding

APPROXIMATE

ACREAGE:  
273 acres

VOLUME:  
5,805 MBF

### Timber Sale Legal Description

Subsection	Section	Township	Range
Pts. E2SW, Pts SE	11	49N	02E
Pts. SWSW	12	49N	02E
Pts. W2NW	13	49N	02E
Pts. N2	14	49N	02E

## Supervisory Area Totals: Mica

Supervisory Area Acres: 1,614 acres  
Supervisory Area Total Sawlog: 18,035 MBF

IDAHO DEPARTMENT OF LANDS FISCAL YEAR 2026 TIMBER SALE PLAN

July 1, 2025 - June 30, 2026

Mica - Parks and Rec  
Supervisory Area

Sale Name:  
**Farragut HM**  
Estimated Auction: Fall 2025  
Location: Farragut State Park  
Drainages: Bayview Creek  
Class I Streams: No  
Class II Streams: No  
Silvicultural Prescription: Group Selection, Overstory Removal, Shelterwood  
Harvest System: Ground - Based

APPROXIMATE  
ACREAGE:  
132 acres

VOLUME:  
1,470 MBF  
0 Poles  
0 Tons

Timber Sale Legal Description			
Subsection	Section	Township	Range
Pts Gov Lots 1 - 4, Pts S2NE, Pts SWNW	04	053N	002W
Pts Gov Lots 3 - 4, Pts S2NE, Pts SWNW, Pts SW, Pts N2SE	05	053N	002W
Pts. SW, Pts. N2SE, Pts E2SW, Pts W2SE, Pts SESE	32	054N	002W

# IDAHO DEPARTMENT OF LANDS FISCAL YEAR 2026 TIMBER SALE PLAN

July 1, 2025 - June 30, 2026

## St. Joe Supervisory Area

Sale Name:

### Boehls Bottom

Estimated Auction: Fall 2025

Location: 22.25 air miles southeast of Clarkia

Drainages: North Fork Clearwater

Class I Streams: No

Class II Streams: Yes

Silvicultural Prescription: Clearcut, Group Selection, Overstory Removal

Harvest System: Cable Yarding, Ground - Based

APPROXIMATE

ACREAGE:  
459 acres

VOLUME:  
9,400 MBF

### Timber Sale Legal Description

Subsection	Section	Township	Range
Pt E2NE	25	41N	04E
Pt NWSE, Pt S2SE	20	41N	05E
Pt S2SE	21	41N	05E
Pt W2NE, Pt NW	27	41N	05E
Pt NE, Pt E2NE, Pt NESW	28	41N	05E
Pt NENE, Pt E2NW, Pt SENW, Pt NWSW	29	41N	05E
Pt GOV 1-3, Pt NE, Pt E2NW, Pt NESW	30	41N	05E
Pt SWNE, Pt SENW, Pt E2SW, Pt NWSE	31	41N	05E

Sale Name:

### Builda Burma

Estimated Auction: Winter 2026

Location: 11.5 Miles North East Of Elk River Idaho

Drainages: Long Creek

Class I Streams: No

Class II Streams: Yes

Silvicultural Prescription: Clearcut

Harvest System: Ground - Based, Ground - Based (Tethered)

APPROXIMATE

ACREAGE:  
158 acres

VOLUME:  
6,395 MBF

### Timber Sale Legal Description

Subsection	Section	Township	Range
Pts. E2SW, Pts. W2SE	28	41N	04E
Pts. Gov Lot 1, Pts. W2NE, Pts. SENE, Pts. SENW, Pts. NESW, Pts. N2SE	33	41N	04E
Pts. Gov Lot 4, Pts. NWSW	34	41N	04E

# IDAHO DEPARTMENT OF LANDS FISCAL YEAR 2026 TIMBER SALE PLAN

July 1, 2025 - June 30, 2026

## St. Joe Supervisory Area

Sale Name:

### Cedar Tree House

Estimated Auction: Fall 2025

Location: 16 miles E Clarkia, Idaho

Drainages: Floodwood Creek

Class I Streams: Yes

Class II Streams: Yes

Silvicultural Prescription: Clearcut, Overstory Removal, Shelterwood

Harvest System: Cable Yarding, Ground - Based

APPROXIMATE

ACREAGE:  
323 acres

VOLUME:  
9,235 MBF  
1,600 Poles

### Timber Sale Legal Description

Subsection	Section	Township	Range
Pts SWNE, Pts SENW, Pts NESW, Pts SE	8	41N	04E
Pts S2NW, Pts SW	9	41N	04E
Pts NE, Pts SE	14	42N	04E
Pts SENE, Pts NESE	21	42N	04E
Pts N2NE, Pts SWNE, Pts S2NW, Pts N2SW, Pts NWSE	22	42N	04E
Pts NWNE	23	42N	04E

Sale Name:

### Divided Cedar

Estimated Auction: Winter 2026

Location: 16 Miles SE of Clarkia Idaho

Drainages: Stanton Creek

Class I Streams: No

Class II Streams: No

Silvicultural Prescription: Clearcut

Harvest System: Ground - Based

APPROXIMATE

ACREAGE:  
140 acres

VOLUME:  
4,150 MBF  
0 Poles

### Timber Sale Legal Description

Subsection	Section	Township	Range
Pts. E2SW, Pts. SE	10	41N	04E
Pts. NE, Pts. NENW	15	41N	04E

# IDAHO DEPARTMENT OF LANDS FISCAL YEAR 2026 TIMBER SALE PLAN

July 1, 2025 - June 30, 2026

## St. Joe Supervisory Area

Sale Name:

### Found It 40

Estimated Auction: Spring 2026  
Location: 16 miles E Clarkia, Idaho  
Drainages: Floodwood-Cedar Creeks  
Class I Streams: Yes  
Class II Streams: Yes  
Silvicultural Prescription: Clearcut, Shelterwood  
Harvest System: Cable Yarding, Ground - Based

APPROXIMATE

ACREAGE:  
316 acres

VOLUME:  
8,798 MBF

### Timber Sale Legal Description

Subsection	Section	Township	Range
Pts. W2SW	12	42N	04E
Pts. SENE	2	42N	04E
Pts. S2NE, N2SE	27	42N	04E
Pts. SWNW, NWSW	26	42N	05E
Pts. Gov Lots 2-4, S2NE, S2NW, SW, N2SE	1	42N	5E

Sale Name:

### Lower Pierce

Estimated Auction: Spring 2026  
Location: 2 Miles SE Fernwood, Idaho  
Drainages: Adams Cr., Pierce Cr.  
Class I Streams: Yes  
Class II Streams: Yes  
Silvicultural Prescription: Clearcut, Seedtree  
Harvest System: Cable Yarding, Ground - Based

APPROXIMATE

ACREAGE:  
329 acres

VOLUME:  
10,855 MBF

### Timber Sale Legal Description

Subsection	Section	Township	Range
Pts. GovLot7	32	43N	01E
Pts. S1/2SW, Pts. NESW	33	43N	01E
Pts. SENW, Pts. SW	34	43N	01E
Pts. SWNW, Pts. NWSW, Pts. GovLot4, Pts. SWNW, Pts. NWSW	4	43N	01E
Pts. E1/2SE, Pts. GovLot1, Pts. SENE	5	44N	01E

# IDAHO DEPARTMENT OF LANDS FISCAL YEAR 2026 TIMBER SALE PLAN

July 1, 2025 - June 30, 2026

## St. Joe Supervisory Area

Sale Name:

**No Idea**

Estimated Auction: Summer 2025  
Location: 5 miles S. St. Maries, Idaho  
Drainages: Syringa Creek  
Class I Streams: No  
Class II Streams: Yes  
Silvicultural Prescription: Clearcut  
Harvest System: Ground - Based

APPROXIMATE

ACREAGE:  
262 acres

VOLUME:  
7,625 MBF

### Timber Sale Legal Description

Subsection	Section	Township	Range
Pts. N2	27	45N	02W
Pts. GL 3, Pts. GL 4, Pts. W2SW	30	45N	02W
Pts. NESW, Pts. N2SW	24	46N	03W

Sale Name:

**Palantir Cedar**

Estimated Auction: Spring 2026  
Location: 4 Miles SW Emida, Idaho  
Drainages: Willow Creek  
Class I Streams: Yes  
Class II Streams: Yes  
Silvicultural Prescription: Clearcut  
Harvest System: Ground - Based

APPROXIMATE

ACREAGE:  
138 acres

VOLUME:  
5,082 MBF  
0 Poles

### Timber Sale Legal Description

Subsection	Section	Township	Range
Pts. SE	12	43N	03W
Pts. W2NE, Pts. W2SE, Pts. E2SW, Pts. SWSW, Pts. E2NW	13	43N	03W

Sale Name:

**St. Joe Overlook**

Estimated Auction: Summer 2025  
Location: 4 miles NW Calder, Idaho  
Drainages: St. Joe River  
Class I Streams: No  
Class II Streams: Yes  
Silvicultural Prescription: Clearcut, Seedtree  
Harvest System: Cable Yarding, Ground - Based

APPROXIMATE

ACREAGE:  
299 acres

VOLUME:  
7,875 MBF

### Timber Sale Legal Description

Subsection	Section	Township	Range
Pts. GL 1, Pts. NWNE, Pts. S2NE, Pts. E2NW, Pts. SW, Pts. N2SE, Pts. SWSE	36	46N	01E



# IDAHO DEPARTMENT OF LANDS FISCAL YEAR 2026 TIMBER SALE PLAN

July 1, 2025 - June 30, 2026

## St. Joe Supervisory Area

Sale Name:

**Summer Harvest**

Estimated Auction: Winter 2026

Location: 6 miles SW of Fernwood, Idaho

Drainages: Tyson Creek, Little Carpenter Creek, Emerald Creek, St. Maries River

Class I Streams: Yes

Class II Streams: Yes

Silvicultural Prescription: Clearcut, Overstory Removal, ROW, Seedtree, Shelterwood

Harvest System: Cable Yarding, Cable Yarding (Tethered), Ground - Based, Shovel Logging

APPROXIMATE

ACREAGE:  
620 acres

VOLUME:  
11,095 MBF

### Timber Sale Legal Description

Subsection	Section	Township	Range
Pts Gov Lots 3, 4, Pts S2NW, Pts. NESW	1	43N	01W
Pts N2NE, Pts SWNE, Pts N2NW, Pts SENW	10	43N	01W
Pts Gov Lot 1, Pts SENE	2	43N	01W
Pts SENE	2	43N	01W
Pts NENE, Pts S2NE, Pts W2NW, Pts SW, Pts N2SE, Pts SESE	25	43N	01W
Pts E2NE, Pts NESE	26	43N	01W
Pts SESE	36	43N	01W
Pts E2SW, Pts SESE	4	43N	01W
Pts SENE, Pts N2SE	8	43N	01W
Pts SENE, Pts N2SE	8	43N	01W
Pts NWNE, Pts NW, Pts NWSW	9	43N	01W

### Supervisory Area Totals: St. Joe

Supervisory Area Acres: 3,044 acres

Supervisory Area Total Sawlog: 80,510 MBF

Supervisory Area Total Cedar Poles: 1,600 Cedar Poles

# IDAHO DEPARTMENT OF LANDS FISCAL YEAR 2026 TIMBER SALE PLAN

July 1, 2025 - June 30, 2026

## Clearwater Supervisory Area

Sale Name:

### Benton Corner Cedar Salvage

Estimated Auction: Summer 2025  
Location: 16 miles north of Headquarters, ID  
Drainages: Dworshak, N Fk Clearwater  
Class I Streams: No  
Class II Streams: Yes  
Silvicultural Prescription: Clearcut, ROW  
Harvest System: Cable Yarding, Tractor Skidding

APPROXIMATE  
ACREAGE: 103 acres  
VOLUME: 2,230 MBF  
600 Poles

### Timber Sale Legal Description

Subsection	Section	Township	Range
Pts Gov Lots 3, 4, Pts S2NW	04	040N	005E
Pts S2SESW	33	041N	005E
Pts S2NE, Pts SENW, Pts NESE	35	041N	005E

Sale Name:

### Bonner Jams

Estimated Auction: Summer 2025  
Location: 13 miles northeast of Headquarters, ID  
Drainages: Bonner Creek  
Class I Streams: Yes  
Class II Streams: Yes  
Silvicultural Prescription: Clearcut  
Harvest System: Cable Yarding

APPROXIMATE  
ACREAGE: 123 acres  
VOLUME: 5,635 MBF

### Timber Sale Legal Description

Subsection	Section	Township	Range
Pts N2NE, Pts NW	36	040N	006E

Sale Name:

### Canal Creek

Estimated Auction: Winter 2026  
Location: 1 mile east of Pierce  
Drainages: Canal Creek  
Class I Streams: No  
Class II Streams: Yes  
Silvicultural Prescription: Seedtree  
Harvest System: Prescriptive Yarding

APPROXIMATE  
ACREAGE: 193 acres  
VOLUME: 5,750 MBF

### Timber Sale Legal Description

Subsection	Section	Township	Range
Pts. N2, Pts. NESE, Pts. E2W2SE	36	37N	5E

# IDAHO DEPARTMENT OF LANDS FISCAL YEAR 2026 TIMBER SALE PLAN

July 1, 2025 - June 30, 2026

## Clearwater Supervisory Area

Sale Name:

### Casey Cedar

Estimated Auction: Spring 2026  
Location: 3 miles NW of Headquarters  
Drainages: Casey Creek  
Class I Streams: Yes  
Class II Streams: Yes  
Silvicultural Prescription: Seedtree  
Harvest System: Prescriptive Yarding

APPROXIMATE

ACREAGE:  
207 acres

VOLUME:  
7,410 MBF  
5,900 Poles

### Timber Sale Legal Description

Subsection	Section	Township	Range
Pts Gov Lots 1, 2	01	038N	004E
Gov Lots 3, Pts Gov Lots 2, 4, 5, Pts SWNE, Pts SENW	06	038N	005E
Pts Gov Lots 4, Pts SESW, Pts SWSE	31	039N	005E

Sale Name:

### East Town Cedar

Estimated Auction: Fall 2025  
Location: 11 miles NW of Headquarters ID  
Drainages: Elkberry Creek  
Class I Streams: No  
Class II Streams: Yes  
Silvicultural Prescription: Clearcut  
Harvest System: Cable Yarding, Tractor Skidding

APPROXIMATE

ACREAGE:  
180 acres

VOLUME:  
5,805 MBF  
4,000 Poles

### Timber Sale Legal Description

Subsection	Section	Township	Range
Pts NE, Pts NENW, Pts. NESW, PTS SE	36	40N	4E

# IDAHO DEPARTMENT OF LANDS FISCAL YEAR 2026 TIMBER SALE PLAN

July 1, 2025 - June 30, 2026

## Clearwater Supervisory Area

Sale Name:

### Johnny Slide OSR

Estimated Auction: Spring 2026

Location: 7 miles northwest to Headquarters

Drainages: Slide Cr.

Class I Streams: No

Class II Streams: Yes

Silvicultural Prescription: Overstory Removal

Harvest System: Cable Yarding, Ground - Based

APPROXIMATE

ACREAGE:  
700 acres

VOLUME:  
7,715 MBF

### Timber Sale Legal Description

Subsection	Section	Township	Range
Pts SWSW	15	039N	004E
Pts SESE	16	039N	004E
Pts SWNE, Pts NESWNW, Pts. S2SWNW, Pts. SENW, Pts E2SW, Pts W2SE, W2SW	17	039N	004E
Pts E2NESE, Pts. SESE	18	039N	004E
Pts E2NE, Pts E2SE	19	039N	004E
N2NW, Pts W2NE, Pts S2NW, Pts NWSW	20	039N	004E
Pts E2NE, Pts E2SE	21	039N	004E
Pts W2NW	22	039N	004E
Pts W2NW, Pts SW, Pts N2SE, Pts SWSE	28	039N	004E
Pts E2NE, Pts E2SW, Pts N2SE, Pts SWSE	33	039N	004E

Sale Name:

### Lower Rainy

Estimated Auction: Winter 2026

Location: 14 Miles East of Orofino, ID

Drainages: Rainy Creek

Class I Streams: Yes

Class II Streams: Yes

Silvicultural Prescription: Clearcut, ROW

Harvest System: Cable Yarding, Ground - Based

APPROXIMATE

ACREAGE:  
133 acres

VOLUME:  
3,360 MBF

### Timber Sale Legal Description

Subsection	Section	Township	Range
Pts NENE, Pts S2NE, Pts NESE	33	037N	004E
Pts NWNW, Pts S2NW, Pts N2SW	34	037N	004E

# IDAHO DEPARTMENT OF LANDS FISCAL YEAR 2026 TIMBER SALE PLAN

July 1, 2025 - June 30, 2026

## Clearwater Supervisory Area

Sale Name:

### North Petri Cedar

Estimated Auction: Fall 2025  
Location: 7 miles nw of Headquarters  
Drainages: Evans Creek  
Class I Streams: No  
Class II Streams: Yes  
Silvicultural Prescription: Clearcut  
Harvest System: Cable Yarding, Ground - Based

APPROXIMATE

ACREAGE:  
95 acres

VOLUME:  
4,010 MBF  
1,800 Poles

### Timber Sale Legal Description

Subsection	Section	Township	Range
Pts. SESE	21	39N	4E
Pts. NWSW	27	39N	4E
Pts. NE, Pts. NESE	28	39N	4E

Sale Name:

### Upper Hodson

Estimated Auction: Spring 2026  
Location: 12 miles NE from Orofino  
Drainages: Hodson Creek  
Class I Streams: No  
Class II Streams: Yes  
Silvicultural Prescription: Seedtree  
Harvest System: Cable Yarding, Ground - Based

APPROXIMATE

ACREAGE:  
150 acres

VOLUME:  
4,865 MBF

### Timber Sale Legal Description

Subsection	Section	Township	Range
Pts SWNW, Pts NWSW	02	037N	003E
Pts Gov Lots 2, 3, Pts S2NE, Pts SENW, Pts E2SW, Pts N2SE, Pts SWSE	03	037N	003E

IDAHO DEPARTMENT OF LANDS FISCAL YEAR 2026 TIMBER SALE PLAN

July 1, 2025 - June 30, 2026

**Clearwater  
Supervisory Area**

Sale Name:

**Winter Road Cedar**

Estimated Auction: Fall 2025

Location: 16.5 miles east of Orofino

Drainages: Winter Creek

Class I Streams: No

Class II Streams: Yes

Silvicultural Prescription: Clearcut, Seedtree

Harvest System: Prescriptive Yarding, Tractor Skidding

APPROXIMATE

ACREAGE:  
236 acres

VOLUME:  
8,075 MBF  
2,645 Poles

Timber Sale Legal Description

Subsection	Section	Township	Range
Pts. E2SW, Pts. SE	11	36N	4E
Pts. N2NE, Pts. SWNE, Pts. SWSW, Pts. E2SW, Pts. W2SE	14	36N	4E

**Supervisory Area Totals: Clearwater**

Supervisory Area Acres: 2,120 acres

Supervisory Area Total Sawlog: 54,855 MBF

Supervisory Area Total Cedar Poles: 14,945 Cedar Poles

# IDAHO DEPARTMENT OF LANDS FISCAL YEAR 2026 TIMBER SALE PLAN

July 1, 2025 - June 30, 2026

## Ponderosa Supervisory Area

Sale Name:

### Aldridge Cedar

Estimated Auction: Summer 2025  
Location: 11 miles northeast of Southwick, ID  
Drainages: Long Meadow Creek  
Class I Streams: No  
Class II Streams: Yes  
Silvicultural Prescription: Clearcut, ROW  
Harvest System: Ground - Based

APPROXIMATE

ACREAGE:  
163 acres

VOLUME:  
7,170 MBF  
3,180 Poles

### Timber Sale Legal Description

Subsection	Section	Township	Range
Pt. SESW; Pt. S2SE	26	39N	01E
Pt. NE; Pt. NENW; Pt. NESE	35	39N	01E
Pt. NW; Pt. NWSW	36	39N	01E

Sale Name:

### Cherry Return

Estimated Auction: Winter 2026  
Location: 3 miles northeast of Deary, ID  
Drainages: Corral Creek  
Class I Streams: Yes  
Class II Streams: Yes  
Silvicultural Prescription: Clearcut, ROW, Shelterwood  
Harvest System: Cable Yarding, Ground - Based

APPROXIMATE

ACREAGE:  
179 acres

VOLUME:  
7,785 MBF

### Timber Sale Legal Description

Subsection	Section	Township	Range
Pt Gov Lot 11	6	40N	01W
Pt Gov Lot 1-4, Pt E2NW, Pt NESW	7	40N	01W
Pt E2NE, Pt NESE	12	40N	02W



# IDAHO DEPARTMENT OF LANDS FISCAL YEAR 2026 TIMBER SALE PLAN

July 1, 2025 - June 30, 2026

## Ponderosa Supervisory Area

Sale Name:

### Dreadnaught

Estimated Auction: Summer 2025

Location: 2 miles northwest and 2 miles southeast of Elk River, ID

Drainages: Shattuck Creek, West Fork Lindley Creek, Elk Creek

Class I Streams: Yes

Class II Streams: Yes

Silvicultural Prescription: Clearcut, Overstory Removal

Harvest System: Prescriptive Yarding

APPROXIMATE

ACREAGE:  
387 acres

VOLUME:  
8,900 MBF

### Timber Sale Legal Description

Subsection	Section	Township	Range
Pt Gov Lot 3 & 4, Pt SWNW, Pt SENW	1	39N	02E
Pt SENE	2	39N	02E
Pt SENE, Pt NESE	20	40N	02E
Pt S2NW, Pt N2SW	21	40N	02E
Pt W2NW, Pt SENW	28	40N	02E
Pt E2, Pt SW	36	40N	02E

Sale Name:

### Jacked Up Cedar

Estimated Auction: Spring 2026

Location: 3 miles east of Bovill, ID

Drainages: East Fork Potlatch River, Jackson Creek

Class I Streams: Yes

Class II Streams: Yes

Silvicultural Prescription: Clearcut, Overstory Removal, ROW

Harvest System: Cable Yarding, Ground - Based, Prescriptive Yarding

APPROXIMATE

ACREAGE:  
191 acres

VOLUME:  
5,670 MBF  
2,510 Poles

### Timber Sale Legal Description

Subsection	Section	Township	Range
Pt Gov Lot 3 & 4, Pt SWNW, Pt NWSW	3	40N	01E
Pt Gov Lot 1-4, Pt S2N2, Pt NESE	4	40N	01E
Pt Gov Lot 1, Pt SENE	5	40N	01E

# IDAHO DEPARTMENT OF LANDS FISCAL YEAR 2026 TIMBER SALE PLAN

July 1, 2025 - June 30, 2026

## Ponderosa Supervisory Area

Sale Name:

### Pig Lip

Estimated Auction: Winter 2026  
Location: 1 mile north of Helmer, ID  
Drainages: Hog Meadow Creek, Corral Creek  
Class I Streams: Yes  
Class II Streams: Yes  
Silvicultural Prescription: Clearcut  
Harvest System: Ground - Based

APPROXIMATE

ACREAGE:  
133 acres

VOLUME:  
2,735 MBF

### Timber Sale Legal Description

Subsection	Section	Township	Range
Pt W2NE, Pt N2NW, Pt NESW, Pt S2SW, Pt W2SE	09	41N	01W
Pt N2NW	16	41N	01W

Sale Name:

### Super Spur

Estimated Auction: Fall 2025  
Location: 11.5 miles northeast of Southwick, ID  
Drainages: Long Meadow Creek  
Class I Streams: Yes  
Class II Streams: Yes  
Silvicultural Prescription: Clearcut, ROW, Seedtree  
Harvest System: Prescriptive Yarding

APPROXIMATE

ACREAGE:  
332 acres

VOLUME:  
7,340 MBF

### Timber Sale Legal Description

Subsection	Section	Township	Range
Pts. SW	29,	39N	02E
Pt. S2NE; Pt. SENW; Pt. NESW; Pt. N2SE; Pt. SESE	30	39N	02E
Pt. NENE	31	39N	02E
Pt. NW	32	39N	02E

## Supervisory Area Totals: Ponderosa

Supervisory Area Acres: 1,385 acres  
Supervisory Area Total Sawlog: 39,600 MBF  
Supervisory Area Total Cedar Poles: 5,690 Cedar Poles

# IDAHO DEPARTMENT OF LANDS FISCAL YEAR 2026 TIMBER SALE PLAN

July 1, 2025 - June 30, 2026

## Maggie Creek Supervisory Area

Sale Name:

### Jeckyl & Hyde Cedar

Estimated Auction: Fall 2025

Location: 7 miles SE of Weippe

Drainages: Lolo Creek

Class I Streams: No

Class II Streams: Yes

Silvicultural Prescription: Clearcut, ROW

Harvest System: Cable Yarding, Ground - Based

APPROXIMATE

ACREAGE:  
253 acres

VOLUME:  
4,642 MBF  
0 Poles

### Timber Sale Legal Description

Subsection	Section	Township	Range
Pts. W2SW	16	34 N	05 E
Pts. N2	17	34 N	05 E
Pts. SE Pts. S2SE	8	34 N	05 E

Sale Name:

### Maggies Back

Estimated Auction: Summer 2025

Location: 11 miles NE of Kooskia

Drainages: Yakus Creek

Class I Streams: No

Class II Streams: Yes

Silvicultural Prescription: Clearcut

Harvest System: Cable Yarding, Ground - Based

APPROXIMATE

ACREAGE:  
192 acres

VOLUME:  
6,332 MBF

### Timber Sale Legal Description

Subsection	Section	Township	Range
Pts. SENE	11	T33N	R05E
Pts. N2, Pts. NWSW, Pts. N2SE, Pts. SESE	12	T33N	R5E

# IDAHO DEPARTMENT OF LANDS FISCAL YEAR 2026 TIMBER SALE PLAN

July 1, 2025 - June 30, 2026

## Maggie Creek Supervisory Area

Sale Name:

### Piersons Hammer

Estimated Auction: Spring 2026

Location: 5 miles E of Weippe

Drainages: Pierson Creek

Class I Streams: Yes

Class II Streams: Yes

Silvicultural Prescription: Clearcut, ROW

Harvest System: Ground - Based

APPROXIMATE

ACREAGE:  
545 acres

VOLUME:  
14,450 MBF

### Timber Sale Legal Description

Subsection	Section	Township	Range
Pts.	10	35N	5E
Pts. NE, Pts. NWNW, Pts. SENW, Pts. NESW, Pts. NWSE	15	35N	5E
Pts. N2NE, Pts. NENW	16	35N	5E
Pts. SW, Pts. S2SE	3	35N	5E
Pts. E2SE	4	35N	5E
Pts. NENE, Pts. S2NE, Pts. SESW, Pts. SE	9	35N	5E

Sale Name:

### Puma Playground Cedar

Estimated Auction: Winter 2026

Location: 11 miles SE of Weippe, Idaho

Drainages: Trout Creek

Class I Streams: Yes

Class II Streams: Yes

Silvicultural Prescription: Clearcut

Harvest System: Cable Yarding, Ground - Based

APPROXIMATE

ACREAGE:  
238 acres

VOLUME:  
4,360 MBF  
10 Poles

### Timber Sale Legal Description

Subsection	Section	Township	Range
Pts. NW, Pts. SW, Pts. NWSE, Pts. NESE, Pts. NE	13	34N	05E
Pts. NESE	14	34N	05E

IDAHO DEPARTMENT OF LANDS FISCAL YEAR 2026 TIMBER SALE PLAN

July 1, 2025 - June 30, 2026

**Maggie Creek  
Supervisory Area**

Sale Name:

**Rocky Maggie Cedar**

Estimated Auction: Fall 2025  
Location: 8 miles NE of kooskia  
Drainages: North Fork Maggie Creek  
Class I Streams: Yes  
Class II Streams: Unk  
Silvicultural Prescription: Clearcut  
Harvest System: Cable Yarding

APPROXIMATE

ACREAGE:  
45 acres

VOLUME:  
500 MBF  
0 Poles

Timber Sale Legal Description

Subsection	Section	Township	Range
Pts N2NW, Pts. SWNW	15	33N	5E
SENE	16	33N	5E

**Supervisory Area Totals: Maggie Creek**

Supervisory Area Acres: 1,273 acres  
Supervisory Area Total Sawlog: 30,284 MBF  
Supervisory Area Total Cedar Poles: 10 Cedar Poles

IDAHO DEPARTMENT OF LANDS FISCAL YEAR 2026 TIMBER SALE PLAN

July 1, 2025 - June 30, 2026

Maggie Creek - IDFG  
Supervisory Area

Sale Name:

**IDFG Deer Creek Forest Restoration**

Estimated Auction: Summer 2025

Location: 8 miles south of Waha Idaho.

Drainages: Deer Creek

Class I Streams: Yes

Class II Streams: Yes

Silvicultural Prescription: Commercial Thin, Seedtree, Shelterwood

Harvest System: Ground - Based

APPROXIMATE

ACREAGE:  
563 acres

VOLUME:  
2,267 MBF  
0 Poles  
0 Tons

Timber Sale Legal Description

Subsection	Section	Township	Range
Pts. NESW, Pts. SESW	18	32N	3W
Pts. Govt. 1, Pts. NENW	19	32N	3W
Pts. SW	13	32N	4W
Pts. W2	14	32N	4W
Pts. N2NE, Pts N2NW, Pts. SWNW	23	32N	4W
Pts. Govt. Lot 1, Pts. NWNE, Pts N2NW	24	32N	4W

# IDAHO DEPARTMENT OF LANDS FISCAL YEAR 2026 TIMBER SALE PLAN

July 1, 2025 - June 30, 2026

## Payette Lakes Supervisory Area

Sale Name:

### Donner Ton

Estimated Auction: Summer 2025  
Location: 3 miles N of Cascade, ID  
Drainages: Cascade Reservoir  
Class I Streams: No  
Class II Streams: Yes  
Silvicultural Prescription: Clearcut, ROW, Seedtree  
Harvest System: Ground - Based

APPROXIMATE  
ACREAGE: 691 acres  
VOLUME: 9,170 MBF

### Timber Sale Legal Description

Subsection	Section	Township	Range
Pts. E2SE	1	14N	03E
Pts. E2SE	11	14N	03E
Pts. NE, Pts. S2NW, Pts. SW, Pts. N2SE, Pts. SWSE	12	14N	03E
Pts. NWNE, Pts. N2NW, Pts. SWNW	13	14N	03E
Pts. SENE	14	14N	03E

Sale Name:

### Elf Racer Ton

Estimated Auction: Spring 2026  
Location: 7 miles NW of Riggins, ID  
Drainages: Elfers Creek  
Class I Streams: No  
Class II Streams: Yes  
Silvicultural Prescription: Clearcut, Overstory Removal  
Harvest System: Ground - Based

APPROXIMATE  
ACREAGE: 224 acres  
VOLUME: 1,865 MBF

### Timber Sale Legal Description

Subsection	Section	Township	Range
Pts. W2NE, Pts. N2NW, Pts. SWNW, Pts. W2SW, Pts. SESW	16	25N	01E

Sale Name:

### Horsing Around Ton

Estimated Auction: Winter 2026  
Location: 5 miles NW of Council, ID  
Drainages: Pole Creek, Hanson Creek  
Class I Streams: No  
Class II Streams: Yes  
Silvicultural Prescription: Clearcut, Overstory Removal, ROW, Seedtree  
Harvest System: Ground - Based

APPROXIMATE  
ACREAGE: 528 acres  
VOLUME: 3,575 MBF

### Timber Sale Legal Description

Subsection	Section	Township	Range
Pts. Lots 3&4, Pts. Lots 6&7 Pts. SWNE, Pts. S2NW, Pts. N2SW, Pts. SESW, Pts. W2SE	26	17N	02W
Pts. Lots 1&2, Pts. S2NE, Pts. SENW, Pts. NESW, Pts. W2SE	27	17N	02W
Pts. SWNE, Pts. W2, Pts. W2SE, Pts. SESE	36	17N	02W

# IDAHO DEPARTMENT OF LANDS FISCAL YEAR 2026 TIMBER SALE PLAN

July 1, 2025 - June 30, 2026

## Payette Lakes Supervisory Area

Sale Name:

### Lost Line Ton

Estimated Auction: Winter 2026  
Location: 8 miles W of New Meadows, ID  
Drainages: Weiser River  
Class I Streams: No  
Class II Streams: Yes  
Silvicultural Prescription: Overstory Removal  
Harvest System: Cable Yarding, Ground - Based

APPROXIMATE

ACREAGE:  
574 acres

VOLUME:  
4,090 MBF

### Timber Sale Legal Description

Subsection	Section	Township	Range
Pts. W2	10	19N	01W
Pts. NW	15	19N	01W
Pts. N2, Pts. NESW., Pts. NWSE	16	19N	01W

Sale Name:

### Olive Basin Ton

Estimated Auction: Fall 2025  
Location: 12 miles NW of Council, ID  
Drainages: Olive Creek, Fir Creek, Dry Creek  
Class I Streams: No  
Class II Streams: Yes  
Silvicultural Prescription: Clearcut, Overstory Removal, ROW, Seedtree  
Harvest System: Cable Yarding, Ground - Based

APPROXIMATE

ACREAGE:  
455 acres

VOLUME:  
2,695 MBF

### Timber Sale Legal Description

Subsection	Section	Township	Range
Pts. W2NE, Pts. SENE, Pts. E2NW, Pts. NESW, Pts. N2SE, Pts. SWSE	18	17N	02W
Pts. Lot 1, Pts. W2NE, Pts. E2NW	19	17N	02W
Pts. E2	13	17N	03W
Pts. N2NE, Pts. SENE, Pts. NESW, Pts. S2SW, Pts. SE	24	17N	03W
Pts. NWNE, Pts. NW	25	17N	03W



IDAHO DEPARTMENT OF LANDS FISCAL YEAR 2026 TIMBER SALE PLAN

July 1, 2025 - June 30, 2026

**Payette Lakes  
Supervisory Area**

Sale Name:

**Stover Ton**

Estimated Auction: Spring 2026  
Location: 4 miles NE of Donnelly, ID  
Drainages: Stover Creek  
Class I Streams: No  
Class II Streams: Yes  
Silvicultural Prescription: Seedtree  
Harvest System: Tractor Skidding

APPROXIMATE

ACREAGE:  
54 acres

VOLUME:  
685 MBF

Timber Sale Legal Description

Subsection	Section	Township	Range
Pts. E2NE	36	17N	03E

**Supervisory Area Totals: Payette Lakes**

Supervisory Area Acres: 2,526 acres  
Supervisory Area Total Sawlog: 22,080 MBF

# IDAHO DEPARTMENT OF LANDS FISCAL YEAR 2026 TIMBER SALE PLAN

July 1, 2025 - June 30, 2026

## Southwest Supervisory Area

Sale Name:

### Elk Wolf

Estimated Auction: Spring 2026

Location: 5 miles north of Idaho City

Drainages: Elk Creek

Class I Streams: Yes

Class II Streams: Yes

Silvicultural Prescription: ROW, Shelterwood

Harvest System: Ground - Based

APPROXIMATE

ACREAGE:  
780 acres

VOLUME:  
5,775 MBF

### Timber Sale Legal Description

Subsection	Section	Township	Range
Pts Gov Lots 2, 3, 4, Pts SWNW, Pts W2SW	01	006N	005E
Gov Lots 1, Pts Gov Lots 2, Pts SWNE, Pts E2SE, SENE	02	006N	005E
N2NE, SWNE, NW, SW, NWSE, Pts SENE, Pts NESE, Pts S2SE	36	007N	005E

Sale Name:

### Hidden Howell

Estimated Auction: Fall 2025

Location: 6 miles NE of Banks, Id

Drainages: Howell Creek

Class I Streams: No

Class II Streams: Yes

Silvicultural Prescription: Clearcut

Harvest System: Ground - Based

APPROXIMATE

ACREAGE:  
320 acres

VOLUME:  
4,370 MBF

### Timber Sale Legal Description

Subsection	Section	Township	Range
Pts SESE	22	010N	003E
Pts SE	23	010N	003E
Pts N2NE, Pts SWNE, Pts SENW, Pts SW, Pts W2SE	26	010N	003E
Pts NE, Pts SESW, Pts SE	27	010N	003E
Pts NENE	34	010N	003E

# IDAHO DEPARTMENT OF LANDS FISCAL YEAR 2026 TIMBER SALE PLAN

July 1, 2025 - June 30, 2026

## Southwest Supervisory Area

Sale Name:

### Rough House

Estimated Auction: Spring 2026

Location: 7 miles NW of Idaho City, Id

Drainages: West Fork Clear Creek

Class I Streams: Yes

Class II Streams: Yes

Silvicultural Prescription: Clearcut, ROW, Seedtree

Harvest System: Ground - Based

APPROXIMATE

ACREAGE:  
476 acres

VOLUME:  
5,855 MBF

### Timber Sale Legal Description

Subsection	Section	Township	Range
Pts Gov Lots 3, 4	01	006N	004E
Gov Lots 3, Pts Gov Lots 1, 2, 4, Pts S2NE, Pts S2NW	02	006N	004E
Pts Gov Lots 1, 2, 3, 4, Pts S2NE, Pts S2NW, Pts N2SE	03	006N	004E
Pts Gov Lots 1, Pts SENE	04	006N	004E
NWSW, Pts NESW, Pts S2SW	34	007N	004E
Pts SESE	35	007N	004E
Pts S2SW	36	007N	004E

## Supervisory Area Totals: Southwest

Supervisory Area Acres: 1,576 acres  
Supervisory Area Total Sawlog: 16,000 MBF

## IDAHO DEPARTMENT OF LANDS FISCAL YEAR 2026 TIMBER SALE PLAN

July 1, 2025 - June 30, 2026

### Eastern Idaho Supervisory Area

Sale Name:

**Frenchys Hollow Ton**

Estimated Auction: Spring 2026

Location: 20 miles East of Downey, ID

Drainages: Walker Gulch

Class I Streams: Yes

Class II Streams: Yes

Silvicultural Prescription: Overstory Removal

Harvest System: Ground - Based

APPROXIMATE

ACREAGE:  
1,068 acres

VOLUME:  
9,300 MBF

#### Timber Sale Legal Description

Subsection	Section	Township	Range
Pts. SESE	35	10S	38E
Pts.NE, Pts. SENW, Pts.S2	36	10S	38E
Pts.NE, Pts. N2NW, Pts. SE	11	11S	38E
Pts. NENE	14	11S	38E
Pts. N2, Pts. S2	2	11S	38E

### Supervisory Area Totals: Eastern Idaho

Supervisory Area Acres: 1,068 acres  
Supervisory Area Total Sawlog: 9,300 MBF

### Statewide Totals

Grand Total Acres: 19,829 acres  
Grand Total Sawlog: 335,084 MBF  
Grand Total Cedar Poles: 28,545 Cedar Poles