

# FISCAL YEAR 2018 TIMBER SALES PLAN



**IDAHO DEPARTMENT OF LANDS FY18 TIMBER SALE PLAN**

July 1, 2017 – June 30, 2018

**Table of Contents**

Types of Sales ..... 3  
Supervisory Area Offices ..... 4  
Administrative Rules and Purchaser Sale Requirements ..... 6  
Priest Lake ..... 7  
Pend Oreille Lake ..... 10  
Mica ..... 14  
St. Joe ..... 16  
Clearwater ..... 20  
Ponderosa ..... 23  
Maggie Creek ..... 26  
Payette Lakes ..... 29  
Southwest ..... 31  
Eastern ..... 32

# IDAHO DEPARTMENT OF LANDS FY18 TIMBER SALE PLAN

July 1, 2017 – June 30, 2018

## Types of Sales

### Timber Sales

Timber sales contain an estimated volume of at least 1,000 MBF and exceed the net appraised stumpage value for salvage sales established by the State Board of Land Commissioners. Timber sales are designed to produce maximum financial returns to the endowment funds consistent with prudent long-term management practices.

Timber sales are advertised for four weeks in a newspaper in the county where the sale is located, and are sold at public auction. In addition to publication in the county newspaper, the advertisement is also posted to the Idaho Department of Lands timber sales website at:

<https://apps.idl.idaho.gov/timbersale/Search.aspx>

### Direct Sales

Direct Sale net appraised stumpage value does not exceed the maximum value established by the State Board of Land Commissioners. This type of sale is to be used to harvest isolated or by-passed timber parcels of insufficient value and volume to justify a salvage sale. The direct sale is not used where two or more potential purchasers may be interested in bidding on the forest products offered for sale.

The direct sale of forest product stumpage is made without advertisement as authorized by the Director.

# IDAHO DEPARTMENT OF LANDS FY18 TIMBER SALE PLAN

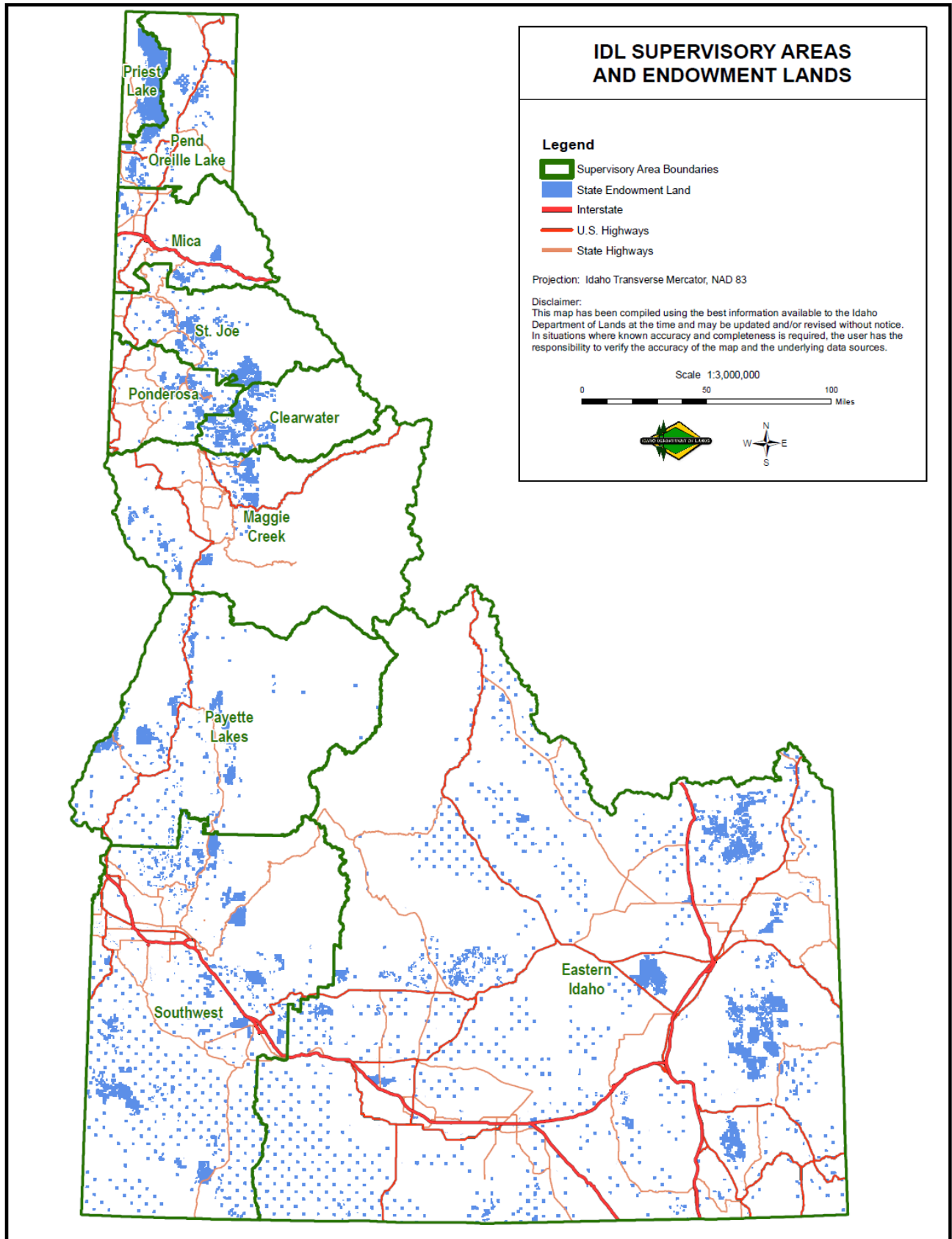
July 1, 2017 – June 30, 2018

Supervisory Area Offices

<b>SUPERVISORY AREA</b>	<b>AREA SUPERVISOR</b>	<b>PHONE</b>
<b>Priest Lake</b> 4053 Cavanaugh Bay Road Coolin, ID 83821	Mick Schanilec	(208) 443-2516
<b>Pend Oreille Lake</b> 2550 Highway 2 West Sandpoint, ID 83864	Tom Fleer	(208) 263-5104
<b>Mica</b> 3706 Industrial Avenue S Coeur d'Alene, ID 83815	Frank Waterman	(208) 769-1577
<b>St. Joe</b> 1806 Main Avenue St. Maries, ID 83861	Rick Arcano	(208) 245-4551
<b>Ponderosa</b> 3130 Highway 3 Deary, ID 83823	Mark Lesko	(208) 877-1121
<b>Clearwater</b> 10230 Highway 12 Orofino, ID 83544	Jay Sila	(208) 476-4587
<b>Maggie Creek</b> 913 Third Street Kamiah ID 83536	Zoanne Anderson	(208) 935-2141
<b>Payette Lakes</b> 555 Deinhard Lane McCall, ID 83638	Scott Corkill	(208) 634-7125
<b>Southwest/South Central</b> 8355 W. State Street Boise, ID 83703	Bob Pietras	(208) 334-3488
<b>Eastern Idaho</b> 3563 Ririe Highway Idaho Falls, ID 83401	Pat Brown	(208) 525-7167

# IDAHO DEPARTMENT OF LANDS FY18 TIMBER SALE PLAN

July 1, 2017 – June 30, 2018



# IDAHO DEPARTMENT OF LANDS FY18 TIMBER SALE PLAN

July 1, 2017 – June 30, 2018

## Administrative Rules and Purchaser Sale Requirements

*Links to detailed information on the internet are provided below.*

### Administrative Rules of the Department of Lands

#### [20.02.14 – Selling Forest Products on State-Owned Endowment Lands](#)

For information regarding timber sale procedures, bidding procedures, bonding requirements and insurance requirements, click on the link below.

#### [Purchaser Sale Requirements](#)

# IDAHO DEPARTMENT OF LANDS FY18 TIMBER SALE PLAN

July 1, 2017 – June 30, 2018

## Priest Lake Supervisory Area

SALE NO.	SALE NAME	SUBDIVISION	SEC	T & R	APPROXIMATE	
					ACREAGE	VOLUME
1	<b>Lucky Star</b>	Pts. E2SE	34	63N/4W	250	3,200 MBF
		Pts. SWNE, Pts. S2NW, Pts. SW	35	63N/4W		
		Pts. N2SE, Pts. SWSE, Pts. E2SE	35	63N/4W		
		Pts. W2NW	36	63N/4W		
		Pts. Govt. Lots 2 & 3	2	62N/4W		
		Pts. Govt. Lot 1	3	62N/4W		

Estimated Auction: Spring 2017

This sale is located within the Caribou Creek drainage approximately 22 air miles north of Coolin, Idaho in Bonner County. This sale will be harvested using seed tree, clearcut and shelterwood removal methods. Ground based and cable yarding will be required on this sale. Developments will include approximately 3.0 miles of secondary road improvement, 2.0 miles of spur road improvement and 0.5 mile of new spur road construction. All reconstructed or constructed spur roads within the sale will be closed with earthen berms or locked gates after conclusion of sale activities. There are several Class II perennial and intermittent streams within or adjacent to the sale area.

2	<b>Chimney Sweep Pulp</b>	Pts. SESW	19	61N/3W	265	1,900 MBF 2,550 Pulp
		Pts. S2NE, Pts. E2SW, Pts. SE	20	61N/3W		
		Pts. SWNW, Pts. W2SW	21	61N/3W		
		Pts. NWNW	28	61N/4W		
		Pts. NE, Pts. NENW	29	61N/3W		
		Pts. N2NE, Pts. NENW	30	61N/3W		
		Pts. W2NE, Pts. NW, Pts. NWSW	24	63N/4W		
		Pts. W2NW, Pts. SENW	25	63N/4W		

Estimated Auction: Spring 2017

This sale is located within the South Fork of Indian Creek and Caribou Creek drainages approximately 11 to 20 air miles north and northeast of Coolin, Idaho in Bonner and Boundary Counties. Harvest prescriptions will include seed tree and clearcut methods. Ground based and cable yarding will be required on this sale. Developments include the reconstruction of 3.5 miles of spur road and 0.5 mile of new spur road construction. The South Fork of Indian Creek and Caribou Creek are Class I streams, but are not within the sale area. There are a few Class II un-named perennial and intermittent streams within the sale area. NOTE: This sale was previously offered in FY-17, but did not sell.

## IDAHO DEPARTMENT OF LANDS FY18 TIMBER SALE PLAN

July 1, 2017 – June 30, 2018

### Priest Lake Supervisory Area

SALE NO.	SALE NAME	SUBDIVISION	SEC	T & R	APPROXIMATE	
					ACREAGE	VOLUME
<b>3</b>	<b>Camel Hunt</b>	Pts. Govt. Lot 4, Pts. SESW	7	60N/3W	520	4,700 MBF
		Pts. SESE	7	60N/3W		
		Pts. S2SW	8	60N/3W		
		Pts. S2NW, Pts. N2SW	16	60N/3W		
		Pts. SENE, Pts. W2NW, Pts. SENW	17	60N/3W		
		Pts. SW, Pts. N2SE, Pts. SWSE	17	60N/3W		
		Pts. NE, Pts. E2NW, Pts. Govt. Lot 1	18	60N/3W		
		Pts. NESW, Pts. N2SE, Pts. SESE	18	60N/3W		
		Pts. E2SW, Pts. SE	12	60N/4W		
		Pts. NWNE, Pts. NENW	13	60N/4W		

Estimated Auction: Summer 2017

This sale is located within the South Fork of Hunt Creek drainage approximately 6.0 air miles northeast of Coolin, Idaho in Bonner and Boundary Counties. Harvest prescriptions will include shelterwood, commercial thin, overstory removal, clearcut and seed tree methods. Ground based and cable yarding methods will be required on this sale. Developments will include 0.6 mile of new spur road construction, 5.0 miles of spur road reconstruction and 6.3 miles of secondary road reconstruction and improvement. The South Fork of Hunt Creek is a perennial Class I stream and adjacent but not within 75 feet of the sale area. There are a number of intermittent and perennial un-named Class II streams within the sale area where 30 foot SPZ's will be established. Existing gates will be closed and seasonal dirt spur roads will be closed with earthen berms following harvest activities.

<b>4</b>	<b>Colonel Camel</b>	Pts. S2SW	20	60N/3W	430	2,750 MBF
		Pts. NW, Pts. N2SW	29	60N/3W		
		Pts. NE, Pts. E2W2, Pts. N2SE	30	60N/3W		
		Pts. Govt. Lots 2, 3 & 4	30	60N/3W		
		Pts. E2SE, Pts. SWSE	25	60N/4W		
		Pts. N2NE	36	60N/4W		

Estimated Auction: Summer 2017

This sale is located within the Soldier Creek drainage approximately 4.0 miles northeast of Coolin, Idaho in Bonner and Boundary Counties. Harvest prescriptions will include mostly overstory removal with some seed tree. Both ground based and cable yarding methods will be required for this sale. Developments will include 7.0 miles of main road improvement and 4.0 miles of secondary road opening or improvement. There are no Class I streams within or adjacent to the sale area.



# IDAHO DEPARTMENT OF LANDS FY18 TIMBER SALE PLAN

July 1, 2017 – June 30, 2018

Priest Lake  
Supervisory Area

SALE NO.	SALE NAME	SUBDIVISION	SEC	T & R	APPROXIMATE	
					ACREAGE	VOLUME
5	<b>Chase Camp OSR</b>	Pts. Govt. Lots 5 & 6	1	58N/5W	990	1,700 MBF
		Pts. Govt. Lots 4, 9 & 10	6	58N/4W		
		Pts. SENE, Pts. SW, Pts. N2SE	13	59N/4W		
		Pts. S2SE	14	59N/4W		
		Pts. Govt. Lot 5, Pts. SWSE	15	59N/4W		
		Pts. Govt. Lot 4, Pts. SESW	18	59N/4W		
		Pts. SWSE	18	59N/4W		
		Pts. Govt. Lot 1, Pts. N2NE, NENW	19	59N/4W		
		Pts. N2NE, Pts. SENE	23	59N/4W		
		Pts. S2NE, Pts. NW, Pts. N2S2	24	59N/4W		
		Pts. Govt. Lot 14	30	59N/4W		
		Pts. Govt. Lots 5, 8, 9, 10 & 12	31	59N/4W		
		Pts. NENE, Pts. SESW, Pts. SE	31	59N/4W		
		Pts. Govt. Lot 3, Pts. NWSW	32	59N/4W		

Estimated Auction: Spring 2018

This sale is located within the Lost Creek, Chase Creek and lower Priest River drainages approximately 2.0 to 6.0 miles south and east of Coolin, Idaho in Bonner County. The entire sale area will be an overstory removal harvest. Ground based and cable yarding methods will be required on this sale. Developments will include 6.0 miles of secondary road reconstruction and 5.0 miles of spur road improvement and opening. The lower Priest River, Chase Creek and Lost Creek are Class I streams and are no closer than 75 feet from the sale boundaries.

6	<b>Middle Fork Breaks</b>	Pts. Govt. Lot 4	7	58N/3W	419	4,500 MBF
		Pts. SESW, Pts. S2SE	8	58N/3W		
		Pts. SWSW	9	58N/3W		
		Pts. S2NW, Pts. SW, Pts. SWSE	16	58N/3W		
		Pts. N2NE, Pts. SWNE	17	58N/3W		
		Pts. SENW, Pts. N2SE	17	58N/3W		
		Pts. Govt. Lots 1, 2 & 3, Pts. W2NW	18	58N/3W		
		Pts. N2, Pts. NESW	21	58N/3W		
		Pts. NWSE, Pts. W2SE	21	58N/3W		
		Pts. SESW, Pts. SESE	12	58N/4W		
		Pts. NE, Pts. N2NW, Pts. SESW	13	58N/4W		
		Pts. N2SE	13	58N/4W		

Estimated Auction: Fall 2017

This sale is located within the Middle Fork East River and Tarlac Creek drainages approximately 9.0 air miles southeast of Coolin, Idaho in Bonner County. A combination of seed tree, overstory removal and clearcut harvest prescriptions will be included on this sale. Ground based and cable yarding methods will be required. Developments will include 7.2 miles of secondary road improvement, opening 5.0 miles of spur road improvement and opening 0.1 mile of spur road new construction. The Middle Fork East River and Tarlac Creek are Class I streams, but are located more than 75 feet from sale area. All existing gates and seasonal roads will be closed following harvest activities.

<b>Additional small volume sales:</b>	100	250 MBF
	<b>TOTALS:</b>	2,974 19,000 MBF 2,550 Pulp

# IDAHO DEPARTMENT OF LANDS FY18 TIMBER SALE PLAN

July 1, 2017 – June 30, 2018

Pend Oreille Lake  
Supervisory Area

SALE NO.	SALE NAME	SUBDIVISION	SEC	T & R	APPROXIMATE ACREAGE	APPROXIMATE VOLUME
1	<b>Canyon OSR</b>	Pts. N2, Pts. E2SW, Pts. SE	28	61N/1W	230	760 MBF

Estimated Auction: Summer 2017

The sale area is located approximately 4.0 miles northwest of Naples, Idaho in the Molar Creek drainage. The sale will utilize an overstory removal silvicultural prescription. Ground based skidding will be required. Approximately 5.0 miles of secondary road and 3.0 miles of spur road will be opened/maintained. Approximately 1.0 mile of spur road will be reconstructed. New spur road construction of approximately 1.0 mile will be needed to access the north portions of the sale. Class II streams are present within the sale area.

2	<b>Cold Poles</b> (Dual-entry)	Pts. NWNE, Pts. NENW	14	61N/1E	330	240 MBF 2,300 Poles
		Pts. S2N2	14	61N/1E		
		Pts. E2	28	61N/1E		
		Pts. E2NE, Pts. NW, Pts. N2SW	16	61N/1W		
		Pts. NE	17	61N/1W		

Estimated Auction: Summer 2017

Portions of the sale area are located approximately 4.0 miles west of Naples, Idaho in the Dodge Creek drainage. The sale is also located approximately 4.0 miles southeast of Naples, Idaho in the Trail Creek drainage. The sale will remove cedar poles. Ground based skidding will be required. Approximately 4.0 miles of secondary road and 3.0 miles of spur road will be opened/maintained.

3	<b>Shady Camp</b>	Pts. SWNW, Pts. S2	1	57N/3W	250	2,000 MBF
		Pts. S2N2, Pts. S2	2	57N/3W		
		Pts. Govt. Lots 5, 6, 15-17	3	57N/3W		
		Pts. Govt. Lots 1-8	4	57N/3W		

Estimated Auction: Fall 2017

The sale area is located approximately 12 miles north of Priest River, Idaho within the Fox Creek and Big Creek stream drainages. The sale will utilize seed tree and overstory removal silvicultural prescriptions. Ground based skidding and cable yarding will be required. Approximately 7.0 miles of secondary road will be opened/maintained. Class II streams are present within the sale area.

4	<b>Mountain Meadows</b>	Pts SESE	11	55N/5W	365	2,570 MBF
		Pts. Govt. Lot 4, Pts. SW, Pts SWSE	12	55N/5W		
		Pts. Govt. Lots 1, 2 & 3, Pts W2E2	13	55N/5W		
		Pts. N2NW, Pts. SENW	13	55N/5W		
		Pts. NENE	14	55N/5W		

Estimated Auction: Summer 2017

The sale area is located approximately 3.0 miles south of Priest River, ID in the White Creek drainage. The sale will utilize an overstory removal silvicultural prescription. Ground and cable based skidding will be required. No road developments are needed. Class II streams are present in the sale area.

# IDAHO DEPARTMENT OF LANDS FY18 TIMBER SALE PLAN

July 1, 2017 – June 30, 2018

Pend Oreille Lake  
Supervisory Area

SALE NO.	SALE NAME	SUBDIVISION	SEC	T & R	APPROXIMATE	
					ACREAGE	VOLUME
5	<b>Freebo</b>	Pts. SWNW, Pts. NWSW	5	56N/5W	350	2,000 MBF
		Pts. E2SW, Pts. SE	6	56N/5W		
		Pts. E2SW, Pts. SE	10	56N/5W		

Estimated Auction: Fall 2017

The sale area is located approximately 4.0 miles northwest of Priest River, Idaho in the Bodie Creek and Freeman Creek drainages. The sale will utilize overstory removal, seed tree, and clearcut silvicultural prescriptions. Ground based skidding and cable yarding will be required. Approximately 5.0 miles of secondary road and 5.0 miles of spur road will be opened/maintained. Approximately 1.5 miles of spur road will be constructed. Class II streams are present on the sale area.

6	<b>Lookout Bloomlow</b>	Pts. E2NW, Pts. SW	1	59N/1W	182	850 MBF
		Pts. E2SE	2	59N/1W		
		Pts. NW	12	59N/1W		

Estimated Auction: Fall 2017

The sale area is located approximately 3.0 miles east of Elmira, Idaho in the Sand Creek drainage. The sale will utilize an overstory removal silvicultural prescription. Ground based skidding and cable yarding will be required. Approximately 3.0 miles of secondary road and 3.0 miles of spur road will be opened/maintained. Approximately 1.0 mile of spur road will be reconstructed. Class I and II streams are present within the sale area.

7	<b>Pine Grove</b>	Pts. NESW, Pts. SWSW, Pts. W2SE	21	57N/4W	320	3,000 MBF
		Pts. S2NW, Pts. SW	27	57N/4W		
		Pts. SENE, Pts. W2SE	28	57N/4W		
		Pts. NWNW	34	57N/4W		

Estimated Auction: Fall 2017

The sale area is located approximately 7.0 miles northeast of Priest River, Idaho in the Blue Creek and Little Pine Creek drainages. The sale will utilize seed tree and shelterwood silvicultural prescriptions. Ground based skidding will be required. Approximately 2.5 miles of spur road will be opened/maintained. Approximately 1.0 mile of spur road will be constructed. Class II streams are present within the sale area.

8	<b>Blue Pole</b> (Dual-entry)	Pts. SENE, Pts. NESW, Pts. N2SE	22	57N/4W	75	100 MBF 750 Poles
		Pts. SWNW, Pts. S2SW	23	57N/4W		

Estimated Auction: Winter 2018

The sale area is located approximately 7.0 miles northeast of Priest River, Idaho in the Blue Creek drainage. The sale will remove cedar poles. Ground based skidding will be required. Approximately 0.5 mile of secondary road will be opened/maintained. Approximately 0.75 mile of spur road will be constructed. Class II streams are present within the sale area.

# IDAHO DEPARTMENT OF LANDS FY18 TIMBER SALE PLAN

July 1, 2017 – June 30, 2018

Pend Oreille Lake  
Supervisory Area

SALE NO.	SALE NAME	SUBDIVISION	SEC	T & R	APPROXIMATE	
					ACREAGE	VOLUME
<b>9</b>	<b>Peterson Face</b>	Pts. N2, Pts. N2SW, Pts. NWSE	16	61N/1E	110	1,810 MBF

Estimated Auction: Winter 2018

The sale area is located approximately 4.0 miles south of Bonners Ferry, Idaho. The sale will utilize overstory removal and seed tree silvicultural prescriptions. Ground based skidding and cable yarding will be required. Approximately 0.5 mile of secondary and 5.0 miles of spur road will be opened/maintained.

<b>10</b>	<b>Lightning Pole</b> (Dual-entry)	Pts. S2NW, Pts. NWSW	4	58N/1E	33	40 MBF 390 Poles
-----------	---------------------------------------	----------------------	---	--------	----	---------------------

Estimated Auction: Winter 2018

The sale area is located approximately 7.0 miles east of Samuels, Idaho in the Lightning Creek and Gold Creek drainages. The sale will remove cedar poles. Ground based skidding will be required. Approximately 2.0 miles of spur road will be opened/maintained. Class II streams are present within the sale area.

<b>11</b>	<b>Curtis Saddle</b>	Pts. Govt. Lots 1-4, S2N2	2	54N/5W	230	5,000 MBF
		Pts. NWNW, Pts. SW	35	55N/5W		
		Pts. N2SE, Pts. SESE	35	55N/5W		
		Pts. W2SW	36	55N/5W		

Estimated Auction: Spring 2018

The sale area is located approximately 4.0 miles northeast of Blanchard, Idaho in the Curtis Creek drainage. The sale will utilize seed tree, shelterwood, and clearcut silvicultural prescriptions. Approximately 5.0 miles of secondary road and 1.0 mile of spur road will be opened/maintained. Ground based skidding will be required. Class II streams are present within the sale area.

<b>12</b>	<b>Sand Castle</b>	Pts. S2NE, Pts. SENW, Pts. SE	8	60N/1E	982	4,900 MBF
		Pts. NW, Pts. N2SW, Pts. S2SE	19	60N/1E		
		Pts. NW, Pts. S2	28	60N/1E		
		Pts. SWNE, Pts. NW, Pts. S2	29	60N/1E		
		Pts. NE, Pts. SESW, Pts. SE	30	60N/1E		
		Pts. NE, Pts. W2W2	31	60N/1E		
		Pts. SESE	25	60N/1W		
		Pts. E2NE, Pts. NESE	36	60N/1W		

Estimated Auction: Spring 2018

The sale area is located approximately 4.0 miles southeast of Naples, Idaho in the Trail Creek drainage. The sale will utilize seed tree and overstory removal silvicultural prescriptions. Ground based skidding and cable yarding will be required. Approximately 3.0 miles of secondary and 7.0 miles of spur road will be opened/maintained. Approximately 2.0 miles of spur road will be reconstructed and 1.0 mile of spur road will be constructed. Class I and II streams are present within the sale area.

# IDAHO DEPARTMENT OF LANDS FY18 TIMBER SALE PLAN

July 1, 2017 – June 30, 2018

Pend Oreille Lake  
Supervisory Area

SALE NO.	SALE NAME	SUBDIVISION	SEC	T & R	APPROXIMATE	
					ACREAGE	VOLUME
<b>13</b>	<b>Curtis Poles Plus</b> (Single-entry)	Pts. Govt. Lot 4, Pts. SWSE	25	55N/5W	98	2,580 MBF
		Pts. Govt. Lots 1 & 2, Pts. W2NE	36	55N/5W		2,000 Poles
		Pts. E2NW	36	55N/5W		

Estimated Auction: Summer 2017

The sale area is located approximately 6.0 miles south of Priest River, Idaho in the Curtis Creek drainage. The sale will utilize a prescriptive seed-tree silvicultural prescription. Ground and cable based skidding will be required. This sale will remove cedar poles. No road developments are needed. Class II streams are present within the sale area.

**Additional small volume sales:** 0 0 MBF

**TOTALS:** 3,555      25,850 MBF  
5,440 Poles

# IDAHO DEPARTMENT OF LANDS FY18 TIMBER SALE PLAN

July 1, 2017 – June 30, 2018

Mica  
Supervisory Area

SALE NO.	SALE NAME	SUBDIVISION	SEC	T & R	APPROXIMATE	
					ACREAGE	VOLUME
1	<b>McPhee OSR</b>	Pts. N2NW	12	49N/2E	320	4,000 MBF
		Pts. NE, Pts. S2	21	49N/2E		
		Pts. W2NW, Pts. NWSW	22	49N/2E		
		Pts. N2NW	28	49N/2E		
		Pts. SW	1	50N/2E		
		Pts. NESE	2	50N/2E		

Estimated Auction: Summer 2017

This sale is located approximately 2.0 air miles northeast of Pinehurst, Idaho in the Bear Creek and Falls Creek drainages. An overstory removal prescription will be used. The sale will utilize both cable yarding and ground based skidding methods. Development work includes approximately 1.5 miles of secondary road construction and approximately 17 miles of secondary road opening for this sale. Class II streams are present within the sale area.

2	<b>Sage Creek OSR</b>	Pts. S2	36	53N/3W	294	2,080 MBF
---	-----------------------	---------	----	--------	-----	-----------

Estimated Auction: Winter 2018

This sale is located approximately 4.0 air miles southeast of Athol, Idaho. An overstory removal prescription will be used. The sale will utilize both cable yarding and ground based skidding methods. Development work includes approximately 6.3 miles of road opening. Class II streams are present within the sale area.

3	<b>Brickel Sawlog</b>	Pts. Govt. Lots 5-7, Pts. SESW	18	53N/5W	242	3,400 MBF
		Pts. Govt. Lot 1, Pts. NENW	19	53N/5W		
		Pts. S2NE, Pts. SE4	13	53N/6W		
		Pts. N2NE, Pts. NENW	24	53N/6W		

Estimated Auction: Spring 2018

This sale is located approximately 7.0 air miles west of Athol, Idaho in the Brickel Creek drainage. This sale will utilize seed tree and clearcut prescriptions. The sale will utilize both cable yarding and ground based skidding methods. Development work includes approximately 1.07 miles of spur road construction and approximately 12 miles of road will be opened. Class I and Class II streams are present within the sale area and adjacent to the sale area.

# IDAHO DEPARTMENT OF LANDS FY18 TIMBER SALE PLAN

July 1, 2017 – June 30, 2018

Mica  
Supervisory Area

SALE NO.	SALE NAME	SUBDIVISION	SEC	T & R	APPROXIMATE ACREAGE	APPROXIMATE VOLUME
<b>4</b>	<b>Eagle Face</b>	Pts. E2	36	48N/2W	277	6,000 MBF
		Pts.N2	6	47N/1W		
		Pts. SWSE	31	48N/1W		
		Pts.	5	47N/1W		

Estimated Auction: Spring 2018

This sale is located approximately 6.0 air miles south of Rose Lake, Idaho in the Robinson Creek drainage. This sale will utilize shelterwood, seed tree and clearcut prescriptions. Both cable yarding and tractor skidding will be used. Development work includes approximately 3.0 miles of spur road construction and approximately 5.5 miles of main haul and 5.0 miles of secondary road opening. Class II streams are present within the sale area.

**Additional small volume sales:**

120      520 MBF

**TOTALS:**    1,253      16,000 MBF

## IDAHO DEPARTMENT OF LANDS FY18 TIMBER SALE PLAN

July 1, 2017 – June 30, 2018

St. Joe  
Supervisory Area

SALE NO.	SALE NAME	SUBDIVISION	SEC	T & R	APPROXIMATE	
					ACREAGE	VOLUME
1	<b>Grand Pierce</b>	Pts. SWSWSE	23	44N/1E	147	6,700 MBF
		Pts. S2SESW	23	44N/1E		
		Pts. NE	26	44N/1E		
		Pts. E2NW	26	44N/1E		
		Pts. SWNW	26	44N/1E		
		Pts. NWNWSE	26	44N/1E		
						50 MBF Cedar Products

Estimated Auction: Summer 2017

This sale is located approximately 5.0 air miles northwest of Fernwood, Idaho in the Olson Creek drainage. The entire silvicultural prescription is a shelterwood harvest. Both tractor and cable yarding will be utilized. Developments include approximately 4.0 miles of secondary road opening and approximately 2.0 miles of surfacing on the Pierce Creek Cooperative Road. Several Class II streams are located within the sale area.

2	<b>Preacher's Plunge</b>	Pts. S2	29	41N/4E	245	2,665 MBF
		Pts.	30	41N/4E		
		Pts. N2	32	41N/4E		
						200 MBF Cedar Products

Estimated Auction: Fall 2017

This sale is located approximately 11 air miles northeast of Elk River, Idaho in the Breakfast Creek, Robinson Creek, and Little North Fork of the Clearwater River drainages. The silvicultural prescriptions consist of an overstory removal and shelterwood harvest. Both tractor and cable yarding will be utilized. Developments include 0.15 mile of new spur road construction and 5.0 miles of road opening. The North Fork of Robinson Creek and Breakfast Creek are Class I streams and are adjacent to the sale areas, and several Class II tributary streams flow from the sale area.

3	<b>Haybarn</b>	Pts.	16	46N/3W	260	6,045 MBF
						60 MBF Cedar Products

Estimated Auction: Fall 2017

This sale is located approximately 7.5 air miles west of St. Maries, Idaho in the Cottonwood Creek drainage. The silvicultural prescription includes a shelterwood/seed tree and a clearcut harvest. Both tractor skidding and cable yarding will be utilized. Developments include approximately 3.5 miles of new secondary road opening. Several Class II streams are present within the sale area.



**IDAHO DEPARTMENT OF LANDS FY18 TIMBER SALE PLAN**

July 1, 2017 – June 30, 2018

St. Joe  
Supervisory Area

SALE NO.	SALE NAME	SUBDIVISION	SEC	T & R	APPROXIMATE		
					ACREAGE	VOLUME	
4	<b>Beaver Bond OSR</b>	Pts E2NE	25	45N/1W	593	5,755 MBF	
		Pts. SE	21	45N/1E			20 MBF
		Pts. W2NE, Pts. SENE, N2SE	22	45N/1E			Cedar
		Pts. NESW, SWSW, W2SW	22	45N/1E			Products
		Pts. E2NW	22	45N/1E			
		Pts. NWSE, Pts. S2S2SE	27	45N/1E			
		Pts. S2S2SW, NESW, W2NW	27	45N/1E			
		Pts. NE, W2SE, N2SW, SESW	28	45N/1E			
		Pts. E2NW, Pts. SWNW	28	45N/1E			
		Pts. SWNE, NESE, NESW	30	45N/1E			
		Pts. SENW, Pts. Govt. Lots 1 & 2	30	45N/1E			

Estimated Auction: Summer 2017

This sale is located approximately 6.0 air miles northeast of Santa, Idaho in the Beaver and Bond Creek drainages. The silvicultural prescriptions are a shelterwood and overstory removals. Tractor skidding and cable yarding will be utilized. Developments include approximately 12 miles of secondary road opening and surfacing of the Renfro Cooperative Road. Several Class I and Class II streams are located adjacent to the sale area.

5	<b>Frosty Sunset Ton</b>	Pts.	8	43N/1W	316	5,500 MBF (30,855 Tons)	
		Pts.	9	43N/1W			100 MBF
		Pts.	25	43N/1W			Cedar
		Pts.	26	43N/1W			Products
		Pts.	27	43N/1W			

Estimated Auction: Summer 2017

One unit of this sale is approximately 5.0 air miles south of Fernwood, Idaho in the Carpenter Creek, Willow Creek, and West Fork Emerald Creek drainages. A second unit of this sale is located approximately 3.0 air miles southwest of Fernwood, Idaho in the Tyson Creek drainage. The silvicultural prescriptions are shelterwood and clearcut. Both tractor and cable yarding will be utilized. Developments include approximately 6.0 miles of secondary road opening. Several Class II streams are present within the sale area.

6	<b>Upper Cardiac</b>	Pts. N2NW, Pts. NWNE	26	41N/5E	117	8,040 MBF	
		Pts. N2NE	27	41N/5E			20 MBF
		Pts. E2NW, Pts. SW	24	42N/4E			Cedar
		Pts. W2SE, Pts. S2NE	24	42N/4E			Products
		Pts. N2NW	25	42N/4E			

Estimated Auction: Fall 2017

This sale is located approximately 36 miles southeast of Clarkia, Idaho in the Floodwood Creek and the North Fork of the Clearwater River drainages. The silvicultural prescriptions will include shelterwood and clearcut. Both ground based and cable yarding systems will be utilized. Developments include approximately 2.0 miles of secondary road construction and approximately 3.0 miles of secondary road abandonment. Class II streams are present within the sale area.

**IDAHO DEPARTMENT OF LANDS FY18 TIMBER SALE PLAN**

July 1, 2017 – June 30, 2018

St. Joe  
Supervisory Area

SALE NO.	SALE NAME	SUBDIVISION	SEC	T & R	APPROXIMATE	
					ACREAGE	VOLUME
7	<b>Anthony's Wapiti OSR</b>	Pts. NWNE, Pts. S2NE	9	42N/2E	284	6,135 MBF
		Pts. SWNW, Pts. NWSW	10	42N/2E		
		Pts. E2SE	10	42N/2E		
		Pts. S2NE, Pts. SENW, Pts. NESW	12	43N/1E		
		Pts. S2SW, Pts. N2SE	12	43N/1E		
		Pts. N2NW	13	43N/1E		

Estimated Auction: Summer 2017

This sale is located approximately 4.0 air miles northwest and 3.0 miles east of Clarkia, Idaho in the Staples Creek and Middle Fork of the St. Maries River drainages. Silvicultural prescriptions will include overstory removal and clearcut. Both ground based and cable yarding will be utilized. Developments include 0.2 mile of spur new construction and 15 miles of road opening and improvements. Portions of the sale area are adjacent to the Middle Fork of the St. Maries River, a Class I stream, and several Class II streams are within the sale area.

8	<b>Smith Citra</b>	Pts. Govt. Lot 3, NESW, NWSE	31	41N/5E	200	6,700 MBF
		Pts. NESE, Govt. Lot 4, SESW	31	41N/5E		
		Pts. SWSE, SESE	31	41N/5E		
		Pts. SESE, Pts. NESE	36	41N/5E		
		Pts. NWSE	36	41N/5E		

Estimated Auction: Spring 2018

This sale is approximately 20 air miles southeast of Clarkia, Idaho in the Little North Fork of the Clearwater River drainage. The silvicultural prescription is a shelterwood. Both ground based and cable yarding systems will be utilized. Developments include approximately 2.0 miles of secondary road new construction. Class II streams are present within the sale area.

**IDAHO DEPARTMENT OF LANDS FY18 TIMBER SALE PLAN**

July 1, 2017 – June 30, 2018

St. Joe  
Supervisory Area

SALE NO.	SALE NAME	SUBDIVISION	SEC	T & R	APPROXIMATE		
					ACREAGE	VOLUME	
<b>9</b>	<b>Mica Quarters</b>	Pts. SENE, NESE	23	45N/2E	264	3,800 MBF	
		Pts. Govt. Lots 1-5	24	45N/2E			65 MBF
		Pts. SWNE	24	45N/2E			Cedar
		Pts. N2SW	24	45N/2E			Products
		Pts. S2NW	24	45N/2E			
		Pts. S2SW, S2SE	18	45N/3E			
		Pts. Govt. Lot 4	18	45N/3E			
		Pts. S2SW	28	45N/4E			

Estimated Auction: Summer 2017

Three units are located approximately 3.0 air miles southeast of Calder, Idaho in the Mica Creek tributary of the St. Joe River. One unit is located approximately 10 air miles southeast of Calder, Idaho in the Boulder Creek tributary of the St. Joe River. The silvicultural prescriptions include clearcut, shelterwood, and overstory removal. Both ground based and cable yarding systems will be utilized. Developments for the sale include approximately 15 miles of secondary road opening, 0.3 mile of secondary road reconstruction, and 1.8 miles of secondary road new construction. Several Class II streams are present on the sale area. All of these streams are tributary to Mica Creek and/or Boulder Creek which are Class I streams.

**Additional small volume sales:**

350            660 MBF

**TOTALS:** 2,776            52,000 MBF  
(30,855 Tons)  
625 MBF  
Cedar  
Products

Idaho Parks and Recreation

SALE NO.	SALE NAME	SUBDIVISION	SEC	T & R	APPROXIMATE	
					ACREAGE	VOLUME
<b>Bill</b>		Pts. Govt. Lots 1-5, SENE, E2SE	7	46N/3W	200	800 MBF
		Pts. S2NW, S2	8	46N/3W		
		Pts. S2	9	46N/3W		

Estimated Auction: Summer 2018

This sale is located approximately 6.0 air miles east of Plummer, Idaho in Heyburn State Park and in the Coeur d' Alene Lake Drainage. The silvicultural prescription will be an individual and group selection. Both ground based and cable yarding systems will be utilized. Developments include approximately 5.0 miles of secondary road opening and approximately 1.0 mile of secondary road new construction. Several Class II streams are located within the sale area.

# IDAHO DEPARTMENT OF LANDS FY18 TIMBER SALE PLAN

July 1, 2017 – June 30, 2018

Clearwater  
Supervisory Area

SALE NO.	SALE NAME	SUBDIVISION	SEC	T & R	APPROXIMATE ACREAGE	VOLUME
<b>1</b>	<b>Elk Creek OSR</b>	Pts. S2SE	12	38N/6E	137	1,420 MBF
		Pts. NE, Pts. NW	13	38N/6E		

Estimated Auction: Summer 2017

This sale is located 7.0 miles northeast of Headquarters, Idaho in the Elk Creek drainage. The silvicultural prescription for the entire sale area is an overstory removal. Tractor and cable yarding will be required on this sale. Development work includes approximately 5.5 miles of spur road reconstruction. Several draws and Class II streams exist adjacent to and within the sale area.

<b>2</b>	<b>Whiskey Mojo</b>	Pts. S2NE, Pts. S2NW	21	37N/3E	332	8,600 MBF
		Pts. N2SW, Pts. SESW	21	37N/3E		
		Pts. SE	21	37N/3E		
		Pts. S2NW	22	37N/3E		
		Pts. NENE	28	37N/3E		

Estimated Auction: Fall 2017

This sale is located 8.0 miles northeast of Orofino, Idaho in the Whiskey Creek drainage. The silvicultural prescription for the entire sale area is a seed tree harvest. Tractor and cable yarding will be required on this sale. Development work includes approximately 3.0 miles of new spur road construction and 1.7 miles of existing spur road reconstruction. The sale boundary is adjacent to a Class I stream and several Class II streams are present within the sale area.

<b>3</b>	<b>Roberts Creek</b>	Pts. Govt. Lot 4	3	38N/2E	408	5,570 MBF
		Pts. SWNW, Pts. W2SW	3	38N/2E		
		Pts. Govt. Lots 1-3	4	38N/2E		
		Pts. S2NE, Pts. SENW	4	38N/2E		
		Pts. E2SW, Pts. SE	4	38N/2E		

Estimated Auction: Fall 2017

This sale is located approximately 13 miles north of Orofino, Idaho, in the headwaters of Roberts Creek (Class II stream). The silvicultural prescription for the entire sale area is a seed tree harvest. Developments include opening 4.7 miles of spur road. The sale area has several unnamed Class II streams located within it.

<b>4</b>	<b>Last Falls OSR</b>	Pts. SENE, Pts. E2SE	19	37N/3E	187	250 MBF
		Pts. S2NW, Pts. SW, Pts. W2SE	20	37N/3E		

Estimated Auction: Summer 2017

This sale is located approximately 7.0 air miles northeast of Orofino, Idaho, in the Falls Creek drainage. The silvicultural prescription for the entire sale is an overstory removal. Ground based equipment will be utilized on the sale. Development includes approximately 1.5 miles of spur road opening. Falls Creek, a Class II stream is adjacent to this sale.

# IDAHO DEPARTMENT OF LANDS FY18 TIMBER SALE PLAN

July 1, 2017 – June 30, 2018

Clearwater  
Supervisory Area

SALE NO.	SALE NAME	SUBDIVISION	SEC	T & R	APPROXIMATE	
					ACREAGE	VOLUME
<b>5</b>	<b>French III</b>	Pts. S2NE, Pts. SWNW	13	37N/6E	333	7,800 MBF
		Pts. SW, Pts. SE	13	37N/6E		
		Pts. E2NE, Pts. NESE	14	37N/6E		
		Pts. S2SE	14	37N/6E		

Estimated Auction: Winter 2018

This sale is located 8.0 air miles northeast of Pierce, Idaho in the French Creek drainage. Silvicultural prescriptions include a seed tree regeneration method and an overstory removal. Tractor and cable yarding will be required on this sale. Development work includes approximately 7.0 miles of existing spur road opening and re-rocking approximately 4.0 miles of the Grandad Bridge Road. There are several perennial Class II streams within the sale area.

<b>6</b>	<b>Last Stand</b>	Pts. W2SW	15	39N/4E	132	3,265 MBF
		Pts. E2	16	39N/4E		

Estimated Auction: Spring 2018

This sale is located 7.0 miles northwest of Headquarters, Idaho in the Silver Creek drainage. The silvicultural prescription includes clearcut and shelterwood regeneration methods. Tractor and cable yarding will be required on this sale. Development work includes approximately 0.5 mile new spur road construction and 0.5 mile of spur road reconstruction. Several draws and Class II streams exist adjacent to and within the sale area.

<b>7</b>	<b>Main Street</b>	Pts. SWNW, Pts. N2SW, Pts. SWSW	2	38N/4E	209	3,000 MBF
		Pts. S2NE, Pts. E2SW, Pts. SE	3	38N/4E		
		Pts. NWNE, Pts. NENW	10	38N/4E		

Estimated Auction: Summer 2017

This sale is located approximately 6.0 air miles northwest of Headquarters, Idaho in the South Fork of Big Creek drainage. A seed tree prescription will be conducted on the sale area. Both tractor and cable yarding systems will be required. Development work includes approximately 3.8 miles of existing spur road opening. Several Class II streams flow within the sale area. The South Fork of Big Creek, a Class I stream, is adjacent to a portion of this sale boundary.

# IDAHO DEPARTMENT OF LANDS FY18 TIMBER SALE PLAN

July 1, 2017 – June 30, 2018

Clearwater  
Supervisory Area

SALE NO.	SALE NAME	SUBDIVISION	SEC	T & R	APPROXIMATE	
					ACREAGE	VOLUME
<b>8</b>	<b>Benton Road</b>	Pts. SWNE, Pts. Govt. Lots 3-4	5	37N/3E	823	11,495 MBF
		Pts. S2NW, Pts. N2SW	5	37N/3E		
		Pts. SWSW, Pts. N2SE	5	37N/3E		
		Pts. Govt. Lots 1-4, Pts. S2NE	6	37N/3E		
		Pts. SENW, Pts. N2SE	6	37N/3E		
		Pts. SESE	6	37N/3E		
		Pts. S2SE, Pts. SESW	25	38N/3E		
		Pts. NE, Pts. E2NW	36	38N/3E		
		Pts. N2SE	36	38N/3E		
		Pts. Govt. Lots 1-2, E2NW	31	38N/4E		
		Pts. Govt. Lot 3, Pts. NESW	31	38N/4E		
		Pts. Govt. Lot 4	3	40N/5E		
		Pts. Govt. Lots1-2, Pts. SWNE	4	40N/5E		
		Pts. SENW, Pts. SW, Pts. W2SE	4	40N/5E		
		Pts. E2SW, Pts. SWSW, Pts.W2SE	34	41N/5E		

Estimated Auction: Spring 2018

The Cutoff unit of the Benton Road sale is located 13 miles northeast of Orofino, Idaho in the Phillips Creek and the Canyon Creek drainages. The Slo Doe unit of the Benton Road sale is located 15 miles northeast of Orofino, Idaho in the White Creek and the Doe Creek drainages. The Backside unit of the Benton Road sale is located 14 miles north of Headquarters, Idaho in the Anderson Creek drainage in the vicinity of Benton Butte. The silvicultural prescription for this sale is seed tree harvest and right-of-way clearing for new road construction and rock pit development. Cable and tractor and or shovel yarding will be required on this sale. Total development for this sale includes approximately 2.86 miles of new mainhaul road construction, 0.34 mile of existing mainhaul road reconstruction, 1.20 miles of existing secondary road opening, 0.85 mile of existing spur road reconstruction, and 17.02 miles of existing spur road opening. A new rock pit will be developed and crushing will be conducted to surface approximately 3.20 miles of mainhaul road with rock. Several Class II streams are present within the sale area.

<b>Additional small volume sales:</b>	<u>200</u>	<u>600 MBF</u>
	<b>TOTALS:</b>	2,761 42,000 MBF

## IDAHO DEPARTMENT OF LANDS FY18 TIMBER SALE PLAN

July 1, 2017 – June 30, 2018

### Ponderosa Supervisory Area

SALE NO.	SALE NAME	SUBDIVISION	SEC	T & R	APPROXIMATE ACREAGE	VOLUME
<b>1</b>	<b>Kameron Kilowatt</b>	Pts. SWSW	29	40N/2E	180	7,000 MBF
		Pts. E2NE, Pts. NESE	31	40N/2E		
		Pts. SWNE, Pts. NW, Pts. N2SW	32	40N/2E		

Estimated Auction: Summer 2017

This sale is located approximately 4.0 air miles west of Elk River, Idaho in the Cameron Creek drainage. This sale will be harvested utilizing a seed tree silvicultural prescription. Ground yarding methods are required to harvest this sale. Approximately 1.0 mile of spur road will be constructed. The sale is adjacent to Class I streams and has several Class II streams within and adjacent to the sale area, all of which are tributaries to Dworshak reservoir.

<b>2</b>	<b>Alder Pole</b> (Single-entry)	Pts. SW, Pts. S2SE	25	39N/1E	260	3,500 MBF 3,200 Poles
		Pts. SENE	34	39N/1E		
		Pts. SWNW	35	39N/1E		
		Pts. N2	36	39N/1E		
		Pts. Govt. Lot 4	30	39N/2E		
		Pts. Govt. Lot 1	31	39N/2E		

Estimated Auction: Fall 2017

This sale is located approximately 10 air miles northeast of Southwick, Idaho in the Long Meadow Creek and North Fork of Dick's Creek drainages. This sale will be harvested utilizing seed tree and overstory removal silvicultural prescriptions. Ground and cable yarding methods are required to harvest this sale. Approximately 1.1 miles of spur road will be constructed. The sale has several Class II streams within and adjacent to the sale area, all of which are tributaries to Dworshak Reservoir.

<b>3</b>	<b>Last Big Chance</b>	Pts. Govt. Lots 1-4, Pts. NENE	16	42N/3W	350	6,700 MBF
		Pts. S2NE, Pts. SWNW, Pts. N2S2	16	42N/3W		

Estimated Auction: Spring 2018

This sale is located approximately 5.0 miles north of Harvard, Idaho in the Last Chance and Big Creek Drainages. This sale will be harvested utilizing overstory removal, seed tree, and clearcut silvicultural prescriptions. Tractor and cable yarding methods will be required to harvest this sale. Approximately 1.5 miles of spur road will be constructed and approximately 3.0 miles of spur road will be reconstructed. Class I streams are adjacent to the sale area. Several perennial and intermittent Class II streams are within the sale area.

## IDAHO DEPARTMENT OF LANDS FY18 TIMBER SALE PLAN

July 1, 2017 – June 30, 2018

### Ponderosa Supervisory Area

SALE NO.	SALE NAME	SUBDIVISION	SEC	T & R	APPROXIMATE	
					ACREAGE	VOLUME
4	<b>Vooser</b>	Pts. Govt. Lots 1-7, Pts. Govt. Lot 9	6	40N/1W	400	6,500 MBF
		Pts. SWNE, Pts. SENW	6	40N/1W		
		Pts. Govt. Lots 3-4	27	41N/1W		
		Pts. SWSW, Pts. S2SE	32	41N/1W		
		Pts. Govt. Lots 2, 3, 5 & 6	34	41N/1W		
		Pts. SWNE, Pts. E2NW, Pts. NESW	34	41N/1W		
		Pts. NWSE	34	41N/1W		

Estimated Auction: Summer 2017

This sale is located approximately 4.0 miles west of Bovill, Idaho in the Hog Meadow Creek, Corral Creek, and East Fork of Corral Creek drainages. The silvicultural prescriptions for this sale include overstory removal, shelterwood with and without cedar poles reserved, and clearcut. Tractor skidding methods will be used to harvest this sale. This sale will require approximately 2.0 miles of spur road reconstruction, and 1.0 mile of new spur road construction. Several intermittent Class II streams are within and adjacent to the sale area, and one Class I stream is adjacent to the sale area.

5	<b>Big Ruby</b>	Pts. SESE	9	40N/1E	225	8,000 MBF
		Pts. SWSW	10	40N/1E		
		Pts. N2NW, Pts. SWNW	15	40N/1E		
		Pts. Govt. Lot 1, Pts. N2, Pts. NESW	16	40N/1E		
		Pts. W2SE	16	40N/1E		
		Pts. E2NE	17	40N/1E		

Estimated Auction: Summer 2017

This sale is located approximately 4.0 air miles south east of Bovill, Idaho in the Ruby Creek drainage. This sale will be harvested utilizing clearcut and seed tree silvicultural prescriptions. Cable and tractor yarding methods are required to harvest this sale. Approximately 5.0 miles of spur road will be constructed. The sale is adjacent to Class I streams and has several Class II streams within and adjacent to the sale area, all of which are tributaries to Ruby Creek.

6	<b>Schwartz Pole</b> (Dual-entry)	Pts. Govt. Lot 1, Pts. S2NE	11	40N/2W	670	1,000 MBF 5,000 Poles
		Pts. NENW, Pts. S2NW, Pts. E2SW	11	40N/2W		
		Pts. N2SE, Pts. SESE	11	40N/2W		
		Pts. SENW, Pts. SW, Pts. S2SE	12	40N/2W		
		Pts. N2NE, Pts. SWNE, Pts. NW	13	40N/2W		
		Pts. NESW	13	40N/2W		
		Pts. NE, Pts. S2SW, Pts. SE	21	41N/2W		
		Pts. Govt. Lot 7, Pts. SWNW	22	41N/2W		
		Pts. NWSW	22	41N/2W		
		Pts. NE, Pts. W2NW, Pts. W2SW	28	41N/2W		
		Pts. SESW	28	41N/2W		
		Pts. NE, Pts. E2NW, Pts. N2SE	29	41N/2W		
		Pts. NW	33	41N/2W		

Estimated Auction: Spring 2018

This sale is located approximately 2.0 air miles northeast of Deary, Idaho in the Brush Creek drainage, and 6.0 air miles northwest of Deary, Idaho in the Schwartz Creek drainage. This sale will harvest pole quality cedar. Tractor skidding and cable yarding methods are required to harvest this sale. Approximately 2.0 miles of new spur road construction will be required. Class II streams are within the sale area, and Schwartz Creek, a Class I stream, is within the sale area.



## IDAHO DEPARTMENT OF LANDS FY18 TIMBER SALE PLAN

July 1, 2017 – June 30, 2018

Ponderosa  
Supervisory Area

SALE NO.	SALE NAME	SUBDIVISION	SEC	T & R	APPROXIMATE ACREAGE	APPROXIMATE VOLUME
<b>7</b>	<b>Shattuck Pole</b> (Single-entry)	Pts. Govt. Lot 2, Pts. NWNE	7	40N/2E	298	7,800 MBF
		Pts. SESE	35	40N/2E		6,800 Poles
		Pts. SW	36	40N/2E		
		Pts Govt. Lot 3 & 4, Pts. S2NW	1	39N/2E		
		Pts. Govt. Lots 1 & 2, Pts. SENE	2	39N/2E		

Estimated Auction: Spring 2018

This sale is located approximately 5.0 air miles northwest of Elk River, Idaho and 2.0 air miles southeast of Elk River. The units are located in the Elk Creek and Seastem Creek drainages. All units of this sale will be a first entry harvest of pole quality cedar trees utilizing seedtree prescriptions. Tractor and cable yarding methods will be required to harvest this sale. This sale will require approximately 3 miles of new spur road construction and 15 miles of road opening. There are several Class II intermittent and perennial streams located within and adjacent to the sale area.

<b>Additional small volume sales:</b>	100	200 MBF
<b>TOTALS:</b>	2,483	40,700 MBF 15,000 Poles

# IDAHO DEPARTMENT OF LANDS FY18 TIMBER SALE PLAN

July 1, 2017 – June 30, 2018

Maggie Creek  
Supervisory Area

SALE NO.	SALE NAME	SUBDIVISION	SEC	T & R	APPROXIMATE	
					ACREAGE	VOLUME
<b>1</b>	<b>Happy Gulch Pulp</b>	Pts. Govt. Lot 1, Pts. S2NE	1	35N/4E	618	8,250 MBF
		Pts. SENW, Pts. N2SW	1	35N/4E		8,427 Pulp
		Pts. SESW, Pts. SWSE	1	35N/4E		
		Pts. NENE, Pts. S2NE	12	35N/4E		
		Pts. SE	12	35N/4E		
		Pts. Govt. Lots 3, 4 & 5	6	35N/5E		
		Pts. SENW, Pts. SWSW	6	35N/5E		
		Pts. SWNE, Pts. Govt. Lots 1-4	7	35N/5E		
		Pts. SENW, E2SW	7	35N/5E		
		Pts. N2SE, SWSE	7	35N/5E		

Estimated Auction: Spring 2018

This sale is located approximately 3.0 miles northeast of Weippe, Idaho in the Kamiah Gulch drainage. Four clearcut units and one right-of-way unit are planned with this sale. Tractor yarding will be required on this sale. Development work includes approximately 1.7 miles of proposed spur road construction. Several intermittent Class II stream are present in and/or to the sale area. This sale is part of the Maggie Creek Pulp Plan.

<b>2</b>	<b>Mixed Rice</b>	Pts. SWSE	2	28N/1W	176	1,525 MBF
		Pts. NE, Pts. E2NW	11	28N/1W		
		Pts. E2SW, Pts. W2SE	11	28N/1W		
		Pts. NWNE, Pts. NENW	14	28N/1W		

Estimated Auction: Fall 2017

This sale is located 13 miles southwest of Grangeville, Idaho in the Rice Creek drainage. This sale will utilize a combination of shelterwood and uneven aged silvicultural prescriptions. Tractor and cable yarding will be required on this sale. Development work includes approximately 2.0 miles of spur road reconstruction and 1.4 miles of spur road opening. A Class I stream splits the sale area and one intermittent Class II is present within the sale area.

<b>3</b>	<b>Chapman Divide</b>	Pts. SWSW	15	29N/2E	250	1,000 MBF
		Pts. S2SE	16	29N/2E		
		Pts. NE, Pts. E2NW	21	29N/2E		
		Pts. E2SW, Pts. SE	21	29N/2E		
		Pts. W2SW	22	29N/2E		

Estimated Auction: Spring 2018

This sale is located approximately 7.0 miles southwest of Grangeville, Idaho, in the Chapman Creek drainage. This sale will utilize an overstory removal silvicultural prescription. Tractor and cable yarding will be required. Development work includes approximately 4.35 miles of spur road reconstruction and 2.4 miles of spur road opening. Two intermittent Class II streams intersect the sale area and Chapman Creek (Class I) is directly adjacent to the sale.

## IDAHO DEPARTMENT OF LANDS FY18 TIMBER SALE PLAN

July 1, 2017 – June 30, 2018

### Maggie Creek Supervisory Area

SALE NO.	SALE NAME	SUBDIVISION	SEC	T & R	APPROXIMATE	
					ACREAGE	VOLUME
4	<b>Crane Creek Saw</b>	Pts. SW	1	34N/5E	109	3,745 MBF
		Pts. E2SE	2	34N/5E		
		Pts. E2NE	11	34N/5E		
		Pts. NW	12	34N/5E		

Estimated Auction: Spring 2018

This sale is located approximately 9.0 miles southeast of Weippe, Idaho in the Crane Creek and Blonde Creek drainages. In order to meet silvicultural objectives, one clearcut unit and two seed tree units will be utilized. Tractor yarding will be required. Development includes approximately 0.25 mile of spur road reconstruction and 1.48 miles of spur road opening. Four Class II streams are present within the sale area.

5	<b>Flattened Grouse</b>	Pts. NW, Pts. N2SW	2	34N/4E	168	1,390 MBF
		Pts. SESE	34	35N/4E		
		Pts. S2SW	35	35N/4E		

Estimated Auction: Fall 2017

This sale is located 4.0 miles south of Weippe, Idaho in the Grouse Creek drainage. In order to meet silvicultural objectives, one clearcut unit and two seed tree units will be utilized. Tractor yarding will be required. Development work includes approximately 0.66 mile of spur road reconstruction and 0.30 mile of temporary spur road construction. There are no Class I or Class II streams within the sale area.

6	<b>Bullwinkle OSR</b>	Pts. NESE, Pts. S2SE	10	34N/5E	228	2,480 MBF
		Pts. W2SW	11	34N/5E		
		Pts. N2NW	14	34N/5E		
		Pts. N2NE	15	34N/5E		

Estimated Auction: Summer 2017

This sale is located 8.0 miles southeast of Weippe, Idaho in the Pete and Charlie Creek and Rock Creek drainages. In order to meet silvicultural objectives, an over-story removal prescription will be utilized. Tractor yarding will be required on this sale. Development work includes approximately 2.57 miles of spur road opening. There are no Class I or Class II streams within the sale area.

# IDAHO DEPARTMENT OF LANDS FY18 TIMBER SALE PLAN

July 1, 2017 – June 30, 2018

Maggie Creek  
Supervisory Area

SALE NO.	SALE NAME	SUBDIVISION	SEC	T & R	APPROXIMATE	
					ACREAGE	VOLUME
<b>7</b>	<b>Menagerie</b>	Pts. SWSW	4	34N/5E	153	900 MBF
		Pts. E2SW, Pts. SE	5	34N/5E		
		Pts. NENE	8	34N/5E		
		Pts. NW/NW	9	34N/5E		
		Pts. S2N2, Pts. N2S2	31	34N/5E		
		Pts. SWNW	32	34N/5E		

Estimated Auction: Fall 2017

This sale is located approximately 5.0 miles southeast of Weippe, Idaho in the Miles Creek drainage. This sale will utilize an over-story removal prescription. Tractor yarding will be required. Development work includes approximately 3.08 miles of spur road opening. Several Class II streams flow within the sale area.

<b>Additional small volume sales:</b>	250	710 MBF
<b>TOTALS:</b>	1,952	20,000 MBF 8,427 Pulp

# IDAHO DEPARTMENT OF LANDS FY18 TIMBER SALE PLAN

July 1, 2017 – June 30, 2018

Payette Lakes  
Supervisory Area

SALE NO.	SALE NAME	SUBDIVISION	SEC	T & R	APPROXIMATE	
					ACREAGE	VOLUME
1	<b>Kizmit Ton</b>	Pts.	21	17N/3W	529	40,180 Tons (7,400 MBF)
		Pts.	22	17N/3W		
		Pts.	27	17N/3W		
		Pts.	28	17N/3W		

Estimated Auction: Summer 2017

This sale is located approximately 13 miles northwest of Council, Idaho in the Olive Creek drainage. Seed tree and shelterwood prescriptions will be implemented. All of the sale volume will be harvested with ground based equipment. Approximately 3.1 miles of spur road will be reconstructed. Approximately 1.6 miles of spur road will be opened. Approximately 1.3 miles of new spur road will be constructed. Approximately 5.6 miles of secondary road is currently planned to be surfaced with pit run. Two Class II perennial streams and multiple Class II intermittent streams are within the sale area.

2	<b>Jugpad Ton</b>	Pts.	8	17N/4E	499	22,640 Tons (4,000 MBF)
		Pts.	16	17N/4E		
		Pts.	17	17N/4E		

Estimated Auction: Summer 2017

This sale is located approximately 8.3 miles southeast of McCall, Idaho in the Paddy Creek Drainage. A shelterwood prescription will be implemented on 389 acres, a seed tree prescription over 20 acres and a clearcut prescription over 90 acres. All acres of the sale area will be harvested utilizing ground based and track based cable yarding equipment. Approximately 9.16 miles of spur road will be reconstructed. A small segment of Paddy Creek, a Class I stream, is located within the sale area. All other streams are Class II and tributary to Paddy Creek within the sale area.

3	<b>Dennys Grand Slam Ton</b>	Pts.	24	23N/1E	355	19,867 Tons (3,500 MBF)
		Pts.	25	23N/1E		

Estimated Auction: Summer 2017

This sale is located approximately 30 miles northeast of New Meadows, Idaho in the Little Salmon river drainage. Seed tree and clearcut prescriptions will be implemented. Both tractor and cable yarding methods will be used. Approximately 6.44 miles of spur road will be reconstructed and approximately 0.42 mile of spur road will be constructed. One Class I perennial and several Class II intermittent tributaries to the Little Salmon River are present within the sale area.

**IDAHO DEPARTMENT OF LANDS FY18 TIMBER SALE PLAN**

July 1, 2017 – June 30, 2018

Payette Lakes  
Supervisory Area

SALE NO.	SALE NAME	SUBDIVISION	SEC	T & R	ACREAGE	APPROXIMATE VOLUME
4	Deeper Ton	Pts.	1	14N/4E	385	11,875 Tons (2,100 MBF)
		Pts.	36	15N/4E		

Estimated Auction: Spring 2018

This sale is located approximately 10 miles northeast of Cascade, Idaho in the Deep Creek drainage and an unnamed tributary to Big Creek. The sale consists of seed tree, over-story removal, and clearcut prescriptions. All of the sale volume will be harvested with ground based equipment. Approximately 3.0 miles of spur road will be reconstructed, and 2.0 miles of spur road opened. Deep Creek, a segment of which is Class I, runs through the sale area. All other streams within the sale area are Class II tributaries to Deep Creek.

**Additional small volume sales:**

0                      0 MBF

**TOTALS:**    1,768                      94,562 Tons  
(17,000 MBF)

# IDAHO DEPARTMENT OF LANDS FY18 TIMBER SALE PLAN

July 1, 2017 – June 30, 2018

## Southwest Supervisory Area

SALE NO.	SALE NAME	SUBDIVISION	SEC	T & R	APPROXIMATE ACREAGE	VOLUME
<b>1</b>	<b>Dry Shirts Ton</b>	Pts.	14	9N/2E	501	2,450 MBF
		Pts. NWNE, Pts. NENW	23	9N/2E		

Estimated Auction: Summer 2017

This sale is located approximately 4.0 miles northwest of Banks, Idaho in the Dry Buck drainage, a tributary of the North Fork of the Payette River. This sale will be a mark to cut selective harvest prescription. Tractor/off road jammer harvest systems are required. Approximately 0.30 mile of new spur road construction, 0.79 mile of spur road reconstruction and 0.15 mile of spur road opening are required. Class II streams are present within the sale area.

<b>2</b>	<b>Murray Ton</b>	Pts. Govt. Lots 3, 4 & 11	1	10N/3E	241	3,390 MBF
		Pts. Govt. Lots 1 & 8	2	10N/3E		
		Pts. SENE, Pts. E2SE	35	11N/3E		
		Pts. NE, Pts. NW, Pts. SW, Pts. NESE	36	11N/3E		

Estimated Auction: Summer 2017

This sale is located approximately 5.0 miles southeast of Smiths Ferry, Idaho in the Murray Creek and South Fork of Murray Creek drainages. All of these drainages are tributary to the North Fork of the Payette River. This sale will utilize a clearcut prescription on three units ranging in size from 63 acres to 99 acres. Tractor and off road jammer yarding systems are required. Approximately 1.0 mile of new spur road construction and 0.9 mile of spur road reconstruction are required. Class II streams are present within the sale area.

<b>3</b>	<b>Deer Wolf Ton</b>	Pts.	2	6N/5E	968	4,160 MBF
		Pts.	11	6N/5E		
		Pts. NENW, Pts. NWNE	14	6N/5E		

Estimated Auction: Summer 2017

This sale is located approximately 3.0 miles north of Idaho City, Idaho in the Deer Creek and Wolf Creek drainages. Both drainages empty into Elk Creek; a tributary of Mores Creek. The sale will be a mark to cut selective harvest prescription. Tractor and off road jammer harvest systems are required. Approximately 1.5 miles of new spur road construction, 0.73 mile of secondary reconstruction, and 2.88 miles of spur reopening. Class I and Class II streams are present within the sale area.

**Additional small volume sales:** 0 0 MBF

**TOTALS:** 1,710      10,000 MBF

# IDAHO DEPARTMENT OF LANDS FY18 TIMBER SALE PLAN

July 1, 2017 – June 30, 2018

## Eastern Supervisory Area

SALE NO.	SALE NAME	SUBDIVISION	SEC	T & R	APPROXIMATE ACREAGE	VOLUME
<b>1</b>	<b>Kelly Bugs Ton</b>	Pts. E2SE	10	4N/41E	300	2,000 MBF
		Pts. SWNE, Pts. W2, Pts. W2SE	11	4N/41E		
		Pts. SESE	11	4N/41E		
		Pts. NE, Pts. N2NW, Pts. SENW	14	4N/41E		

Estimated Auction: Spring 2018

This sale is located 13 air miles southeast of Rexburg, Idaho. This sale is in the Moody Creek drainage. The silvicultural prescriptions will be shelterwood and group selection with trees marked reserved. Tractor skidding will be utilized. Approximately 1.5 miles of spur road will be constructed and 1.0 mile of spur road will be reconstructed. There are no Class I or Class II streams within the sale boundary.

<b>2</b>	<b>Jacobson Creek Ton</b>	Pts. All	35	11S/39E	200	1,000 MBF
		Pts. Govt. Lot 2, Pts. SWNW	36	11S/39E		
		Pts. Govt. Lots 4-7	36	11S/39E		
		Pts. Govt. Lots 2-4	1	12S/39E		
		Pts. Govt. Lots 1 & 2	2	12S/39E		

Estimated Auction: Spring 2018

This sale is located 11 air miles east of Downy, ID. This sale is in several smaller drainages that flow in to the Cottonwood Creek drainage. The silvicultural prescription will be a shelterwood treatment. Tractor skidding will be utilized. Approximately 8.50 miles of spur road will be constructed. Approximately 3.0 miles of spur road will be improved or reconstructed. There are no Class I or Class II streams within the sale boundary.

<b>3</b>	<b>Brockman Ton</b>	Pts. S2SW, Pts. SWSE	3	02N/42E	600	2,000 MBF
		Pts. SW, Pts. SWSE	4	02N/42E		
		Pts. E2SE	5	02N/42E		
		Pts. NENE	8	02N/42E		
		Pts. NE, Pts. NW, Pts. SE	9	02N/42E		
		Pts. N2, Pts. S2	10	02N/42E		
		Pts. NW, Pts. S2SW	11	02N/42E		
		Pts. Govt. Lots 1-4, Pts. N2, S2	14	02N/42E		
		Pts. NE, Pts. NW, Pts. N2SE	15	02N/42E		
		Pts. N2	23	02N/42E		
		Pts. NW	24	02N/42E		

Estimated Auction: Spring 2018

This sale is located 25 air miles southeast of Idaho Falls, ID. This sale is in both the Lava and Brockman Creek drainages. The silvicultural prescription will be an overstory removal. Tractor skidding will be utilized. Approximately 0.5 mile of spur road will be constructed and 4.0 miles of spur road will be reconstructed. There are no Class I or Class II streams within the sale boundary.

**Additional small volume sales:** 0 0 MBF

**TOTALS:** 1,100      5,000 MBF