

# FISCAL YEAR 2019 TIMBER SALES PLAN



# IDAHO DEPARTMENT OF LANDS FY19 TIMBER SALE PLAN

July 1, 2018 – June 30, 2019

## Table of Contents

Types of Sales .....	3
Supervisory Area Offices .....	4
Administrative Rules and Purchaser Sale Requirements .....	6
Priest Lake .....	7
Pend Oreille Lake .....	10
Mica .....	13
St. Joe .....	16
Clearwater .....	20
Ponderosa .....	23
Maggie Creek .....	26
Payette Lakes .....	28
Southwest .....	31
Eastern .....	32

# IDAHO DEPARTMENT OF LANDS FY19 TIMBER SALE PLAN

July 1, 2018 – June 30, 2019

## Types of Sales

### Timber Sales

Timber sales contain an estimated volume of at least 1,000 MBF and exceed the net appraised stumpage value for salvage sales established by the state board of land commissioners. Timber sales are designed to produce maximum stumpage returns to the endowment funds consistent with prudent long-term management practices.

Timber sales are advertised for four weeks in a newspaper in the county where the sale is located, and are sold at public auction.

### Direct Sales

Direct Sale net appraised stumpage value does not exceed the maximum value established by the State Board of Land Commissioners. This type of sale is to be used to harvest isolated or by-passed parcels of timber of insufficient value and volume to justify a salvage sale. The direct sale is not used where two or more potential purchasers may be interested in bidding on the forest products offered for sale.

The direct sale of forest product stumpage is made without advertisement as authorized by the Director.

# IDAHO DEPARTMENT OF LANDS FY19 TIMBER SALE PLAN

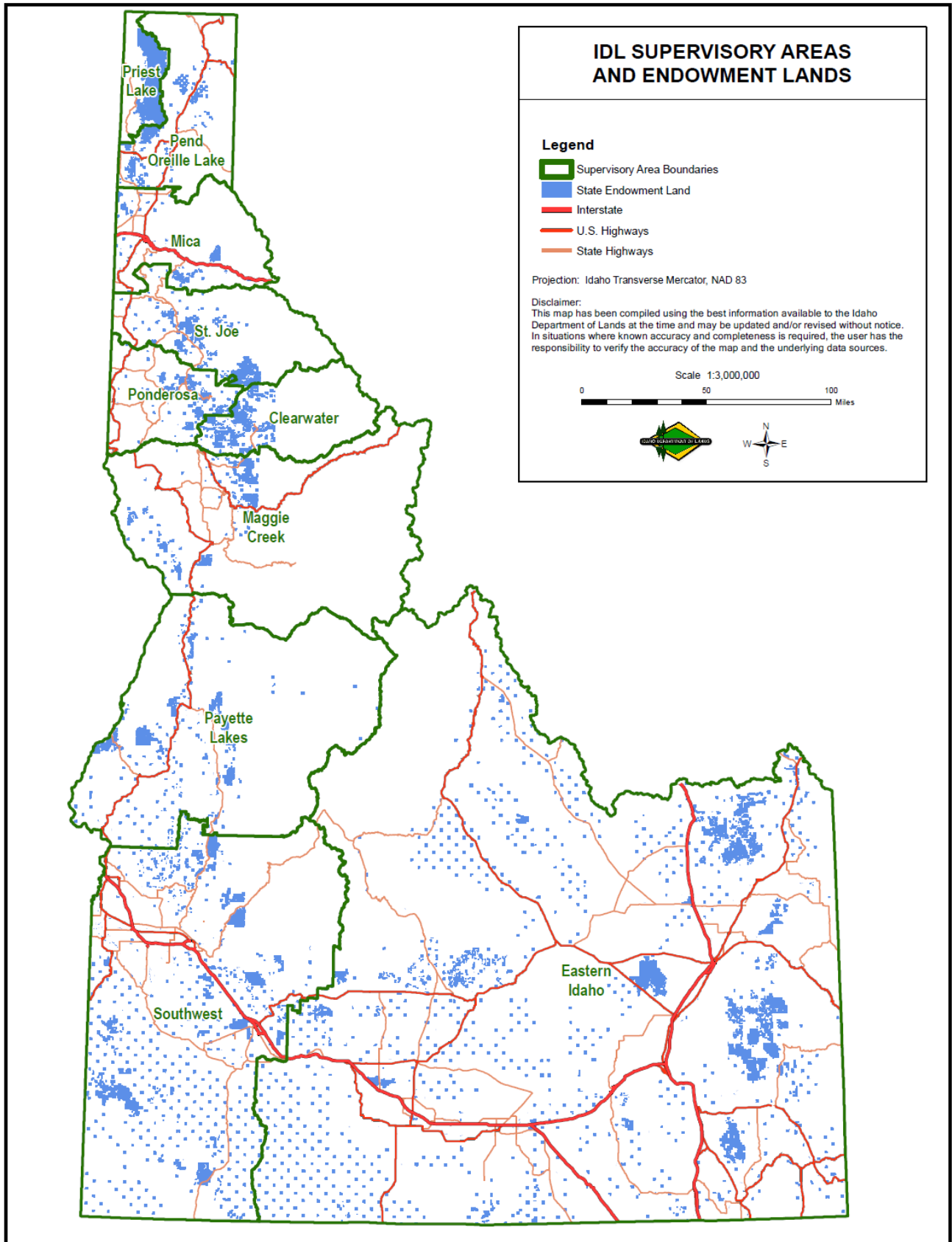
July 1, 2018 – June 30, 2019

Supervisory Area Offices

<b>SUPERVISORY AREA</b>	<b>AREA SUPERVISOR</b>	<b>PHONE</b>
<b>Priest Lake</b> 4053 Cavanaugh Bay Road Coolin, ID 83821	Mick Schanilec	(208) 443-2516
<b>Pend Oreille Lake</b> 2550 Highway 2 West Sandpoint, ID 83864	Tom Fleer	(208) 263-5104
<b>Mica</b> 3706 Industrial Avenue S Coeur d'Alene, ID 83815	Frank Waterman	(208) 769-1577
<b>St. Joe</b> 1806 Main Avenue St. Maries, ID 83861	Rick Arcano	(208) 245-4551
<b>Ponderosa</b> 3130 Highway 3 Deary, ID 83823	Mark Lesko	(208) 877-1121
<b>Clearwater</b> 10230 Highway 12 Orofino, ID 83544	Jay Sila	(208) 476-4587
<b>Maggie Creek</b> 913 Third Street Kamiah ID 83536	Patrick Hagen	(208) 935-2141
<b>Payette Lakes</b> 555 Deinhard Lane McCall, ID 83638	Scott Corkill	(208) 634-7125
<b>Southwest/South Central</b> 8355 W. State Street Boise, ID 83703	Bob Pietras	(208) 334-3488
<b>Eastern Idaho</b> 3563 Ririe Highway Idaho Falls, ID 83401	Pat Brown	(208) 525-7167

# IDAHO DEPARTMENT OF LANDS FY19 TIMBER SALE PLAN

July 1, 2018 – June 30, 2019



# IDAHO DEPARTMENT OF LANDS FY19 TIMBER SALE PLAN

July 1, 2018 – June 30, 2019

## Administrative Rules and Purchaser Sale Requirements

*Links to detailed information on the internet are provided below.*

Administrative Rules of the Department of Lands

[20.02.14 – Selling Forest Products on State-Owned Endowment Lands](#)

For information regarding timber sale procedures, bidding procedures, bonding requirements and insurance requirements, click on the link below.

[Purchaser Sale Requirements](#)

# IDAHO DEPARTMENT OF LANDS FY19 TIMBER SALE PLAN

July 1, 2018 – June 30, 2019

## Priest Lake Supervisory Area

SALE NO.	SALE NAME	SUBDIVISION	SEC	T & R	APPROXIMATE	
					ACREAGE	VOLUME
1	<b>Bear Bottom</b>	Pts. Govt. Lots 2, 3 & 4, Pts. SWNE	2	61N/4W	425	4,000 MBF
		Pts. S2NW, Pts. SW, Pts. NWSE	2	61N/4W		
		Pts. Govt. Lot 6, Pts. S2SE	3	61N/4W		
		Pts. NE, Pts. NENW, Pts. S2NW	10	61N/4W		
		Pts. SW, Pts. NWSE	10	61N/4W		
		Pts. N2NW, Pts. SWNW	11	61N/4W		
		Pts. NW	14	61N/4W		
		Pts. N2NW	15	61N/4W		

Estimated Auction: Summer 2018

This sale is located within the Bear Creek drainage approximately 10 air miles north of Coolin, Idaho in Bonner County. Harvest prescriptions will include seed tree; clearcut; shelterwood and overstory removal methods. Ground based, cable yarding and multi-span harvest methods will be required on this sale. Developments will include 0.5 mile of new spur road construction; 0.3 mile of spur road reconstruction and 1.0 mile of spur road improvement. Bear Creek is a perennial Class I stream and adjacent but not within 75 feet of the sale area. There are a number of intermittent and perennial unnamed Class II streams within the sale area.

2	<b>Fenton Cougar OSR</b>	Pts. SWSE, Pts. Govt. Lot 4	18	59N/3W	1,233	3,100 MBF
		Pts. SESW	18	59N/3W		
		Pts. N2NE, Pts. NENW	19	59N/3W		
		Pts. Govt. Lot 1	19	59N/3W		
		Pts. SENE, Pts. SW, Pts. N2SE	13	59N/4W		
		Pts. S2SE	14	59N/4W		
		Pts. NE	23	59N/4W		
		Pts. SWNE, Pts. NW	24	59N/4W		
		Pts. N2SW, Pts. N2SE	24	59N/4W		
		Pts. Govt. Lot 3	18	60N/3W		
		Pts. S2NW, Pts. SW, Pts. NESE	13	60N/4W		
		Pts. SESW, Pts. NWSE, Pts. S2SE	14	60N/4W		
		Pts. N2NE, Pts. SENE, Pts. W2NW	23	60N/4W		
		Pts. Govt. Lot 4, Pts. NESE, Pts. S2NE	23	60N/4W		
		Pts. S2NW, Pts. SW	24	60N/4W		
		Pts. W2NE, Pts. NW, Pts. SW	25	60N/4W		
		Pts. Govt. Lot 1, Pts. E2	26	60N/4W		
		Pts. E2	35	60N/4W		
		Pts. NW, Pts. W2SW	36	60N/4W		

Estimated Auction: Summer 2018

This sale is located within the South Fork Hunt Creek, Fenton Creek, Cougar Creek and Soldier Creek drainages approximately 5.0 air miles northeast of Coolin, Idaho in Bonner and Boundary Counties. Harvest prescription will be an overstory removal. Both ground based and cable harvesting methods will be required for this sale. Developments will include 9.0 miles of spur road improvement and opening and 11 miles of secondary road improvement and opening. South Fork Hunt Creek, Fenton Creek, Cougar Creek and Soldier Creek are all Class I streams. These streams are adjacent but not within 75 feet of the sale area. Class II intermittent and perennial streams are within or adjacent to the sale area.

# IDAHO DEPARTMENT OF LANDS FY19 TIMBER SALE PLAN

July 1, 2018 – June 30, 2019

## Priest Lake Supervisory Area

SALE NO.	SALE NAME	SUBDIVISION	SEC	T & R	APPROXIMATE ACREAGE	APPROXIMATE VOLUME
<b>3</b>	<b>Lee Lake</b>	Pts. E2NE, Pts. NESE	10	59N/4W	237	3,000 MBF
		Pts. N2, Pts. SW, Pts. W2SE, Pts. SESE	11	59N/4W		
		Pts. SENE, Pts. SW, Pts. N2SE	14	59N/4W		

Estimated Auction: Spring 2018

This sale is located within the Lee Lake, Lee Creek and Chase Lake drainages approximately 1.0 air mile east of Coolin, Idaho in Bonner County. The harvest prescription for sale area will be a combination of overstory removal, shelterwood and seed tree harvest. Ground based and cable yarding methods will be required on this sale. Developments will include 1.4 miles of spur road reconstruction, 0.1 mile of spur road new construction and 0.1 mile of spur road improvement and opening. Lee Lake, Lee Creek and Chase Lake are all Class I streams and adjacent but not within 75 feet of the sale area.

<b>4</b>	<b>Lost Beaver</b>	Pts. SENE, Pts. E2SE	23	59N/4W	285	4,000 MBF
		Pts. SWNW, Pts. SW	24	59N/4W		
		Pts. E2, Pts. SENW	26	59N/4W		

Estimated Auction: Spring 2019

This sale is located within the Lost Creek drainage approximately 3.0 air miles southeast from Coolin, Idaho in Bonner County. The harvest prescription will be a combination of shelterwood and seed tree. Ground based and cable yarding methods will be required on this sale. Developments will include 0.1 mile of new secondary road construction; 0.3 mile of new spur road construction; 1.5 miles of spur road reconstruction and 0.5 mile of spur road opening or improvement. Portions of Lost Creek is classified as a Class I stream and is adjacent but not within 75 feet of the sale area. Other portions of Lost Creek have been determined to be intermittent Class II and is within the sale area. There are several unnamed Class II intermittent streams adjacent or within the sale area.

<b>5</b>	<b>North Fork Engraver</b>	Pts. E2NE	25	59N/4W	45	1,400 MBF
		Pts. Govt. Lots 2, 3 & 4	30	59N/3W		
		Pts. SENW, Pts. NESW	30	59N/3W		
		Pts. S2NE, Pts. N2SE	30	59N/3W		

Estimated Auction: Spring 2018

This sale is located within the North Fork East River drainage approximately 4.0 air miles southeast of Coolin, Idaho in Bonner County. A combination of seed tree and clearcut harvest prescriptions will be involved on this sale. Ground based and cable yarding methods will be required. Developments will include 2.0 miles of spur road reconstruction. The North Fork East River is a Class I stream and is adjacent but not within 75 feet of the sale area. There are a few Class II perennial streams adjacent but not within the sale area.



# IDAHO DEPARTMENT OF LANDS FY19 TIMBER SALE PLAN

July 1, 2018 – June 30, 2019

## Priest Lake Supervisory Area

SALE NO.	SALE NAME	SUBDIVISION	SEC	T & R	APPROXIMATE	
					ACREAGE	VOLUME
6	<b>Selkirk Powder</b>	Pts. Govt. Lots 2, 3 & 4	7	58N/2W	195	3,200 MBF
		Pts. E2SW	7	58N/2W		
		Pts. SESE	11	58N/3W		
		Pts. SENE, Pts. SWSW	12	58N/3W		
		Pts. NWNW	13	58N/3W		
		Pts. SWSW	14	58N/3W		
		Pts. NE, Pts. E2SE	15	58N/3W		
		Pts. NWNW	23	58N/3W		

Estimated Auction: Summer 2018

This sale is located within the Middle Fork East River and Uleda Creek drainages approximately 9.0 air miles southeast of Coolin, Idaho in Bonner County. A combination of shelterwood, overstory removal and clearcut harvest prescriptions will be involved on this sale. Ground based and cable yarding methods will be required. Developments will include 0.5 mile of new spur road construction; 3.0 miles of spur road reconstruction and 6.0 miles of secondary road reconstruction. The Middle Fork East River and Uleda Creek are both Class I streams and are adjacent but not within 75 feet of the sale area.

7	<b>West Rim OSR</b>	Pts. Govt. Lot 1	1	58N/4W	200	1,000 MBF
		Pts. SWSW	25	58N/4W		
		Pts. SESE	26	58N/4W		
		Pts. E2NE, Pts. E2SE	35	58N/4W		
		Pts. NW, Pts. W2SW	36	58N/4W		

Estimated Auction: Spring 2019

This sale is located within the North Fork of the East River approximately 4.0 air miles southeast of Coolin, Idaho in Bonner County. The entire area will be an overstory removal with the use of ground based yarding methods. Developments will include 2.0 miles of main road reconstruction and 5.0 miles of spur road reconstruction. The North Fork of the East River is a Class I stream and is not within the sale. There are several unnamed Class II perennial and intermittent streams adjacent and within the sale area.

<b>Additional small volume sales:</b>	60	300 MBF
<b>TOTALS:</b>	2,680	20,000 MBF

# IDAHO DEPARTMENT OF LANDS FY19 TIMBER SALE PLAN

July 1, 2018 – June 30, 2019

Pend Oreille Lake  
Supervisory Area

SALE NO.	SALE NAME	SUBDIVISION	SEC	T & R	APPROXIMATE	
					ACREAGE	VOLUME
1	<b>PS</b>	Pts. SW, Pts. W2SE, Pts. SESE	15	57N/4W	250	1,700 MBF
		Pts. SWNE, Pts. SENW	16	57N/4W		
		Pts. N2SW, Pts. SESW	16	57N/4W		
		Pts. SESE	16	57N/4W		
		Pts. NENW	21	57N/4W		
		Pts. N2NE	22	57N/4W		

Estimated Auction: Summer 2018

The sale area is located approximately 7.0 miles northeast of Priest River, Idaho in the Blue Creek drainage. Overstory removal and seed tree harvest prescriptions will be implemented. Ground based skidding will be required. Developments will include approximately 0.8 mile of spur road reconstruction and approximately 0.5 mile of spur road new construction. Class II streams are adjacent to the sale area.

2	<b>Sheep To Market</b>	Pts. NESW, Pts. S2SW	16	54N/4W	1,090	3,500 MBF
		Pts. SW	20	54N/4W		
		Pts. S2NE, Pts. SENW, Pts. S2	28	54N/4W		
		Pts. SWNE, Pts. W2	34	54N/4W		
		Pts. N2, Pts. NWSW, Pts. S2SW	36	54N/4W		
		Pts. SE	36	54N/4W		

Estimated Auction: Summer 2018

The sale area is located approximately 6.0 miles west of Blanchard, Idaho. An overstory harvest prescription will be implemented. Ground based skidding will be required. Developments will include approximately 5.0 miles of spur road opening/maintenance. No streams are present.

3	<b>Downfall OSR</b>	Pts. W2W2SW	5	60N/1W	480	3,500 MBF
		Pts. Govt. Lot 6, Govt. Lot 7	6	60N/1W		
		Pts. SWNE, Pts. SENW	6	60N/1W		
		Pts. W2SW, Pts. SE	6	60N/1W		
		Pts. N2, Pts. N2SW	8	60N/1W		

Estimated Auction: Fall 2018

The sale area is located approximately 5.5 miles west of Naples, Idaho in the Fall Creek drainage. Overstory removal, clearcut, and seed tree harvest prescriptions will be implemented. Ground based skidding and cable yarding will be required. Developments will include approximately 4.0 miles of secondary road and 3.5 miles of spur road opening/maintenance, approximately 1.0 mile of secondary road and 1.0 mile of spur road reconstruction and approximately 1.5 miles of new spur road construction. Class I and II streams are present within the sale area.

4	<b>Shot Gap</b>	Pts. SENW, Pts. E2SW	8	57N/3W	150	2,500 MBF
		Pts. SE	8	57N/3W		
		Pts. W2SW	9	57N/3W		

Estimated Auction: Fall 2018

The sale area is located approximately 7.2 miles west of Sandpoint, Idaho in the Happy Fork Creek drainage. Seed tree and overstory removal harvest prescriptions will be implemented. Ground based skidding will be required. Developments will include approximately 6.3 miles of secondary road and 1.4 miles of spur road reconstruction. Class I and II streams are present within the sale area.

## IDAHO DEPARTMENT OF LANDS FY19 TIMBER SALE PLAN

July 1, 2018 – June 30, 2019

Pend Oreille Lake  
Supervisory Area

SALE NO.	SALE NAME	SUBDIVISION	SEC	T & R	APPROXIMATE ACREAGE	APPROXIMATE VOLUME
<b>5</b>	<b>Smith West</b>	Pts. NW, Pts. N2SW	36	63N/1E	240	1,500 MBF

Estimated Auction: Fall 2018

The sale area is located approximately 5.0 miles north of Bonners Ferry, Idaho in the Leslie Creek drainage. Overstory removal and seed tree harvest prescriptions will be implemented. Ground based skidding will be required. Developments will include approximately 0.8 mile of secondary road and 3.0 miles of spur road opening/maintenance and approximately 0.25 mile of spur road new construction. Class II streams are present within the sale area.

<b>6</b>	<b>BK Broiler</b>	Pts.	36	55N/6W	700	2,500 MBF
		Pts. SW	18	54N/5W		

Estimated Auction: Winter 2019

The sale area is located approximately 3.0 miles west of Blanchard, Idaho. Overstory removal and seed tree harvest prescriptions will be implemented. Ground based and line skidding will be required. Developments will include approximately 5.0 miles of secondary road and 7.0 miles of spur road opening/maintenance, approximately 1.0 mile of spur road reconstruction and approximately 1.0 mile of spur road new construction. Class II streams are present within the sale area.

<b>7</b>	<b>Blue Rocks</b>	Pts. SW, Pts. E2SE, Pts. SWSE	23	57N/4W	560	3,600 MBF
		Pts. SW, Pts. SWSE	24	57N/4W		
		Pts. Govt. Lots 3, 5, 10, 12 & 13	25	57N/4W		
		Pts. NWNE, Pts. N2NW	25	57N/4W		
		Pts. SWNW	25	57N/4W		
		Pts. NE, Pts. N2NW, Pts. W2SE	26	57N/4W		

Estimated Auction: Winter 2019

The sale area is located approximately 7.0 miles northeast of Priest River, Idaho in the South Fork Blue Creek drainage. Overstory removal, clearcut and seed tree harvest prescriptions will be implemented. Ground based and cable skidding will be required. Developments will include approximately 1.5 miles of secondary road and 2.0 miles of spur road opening/maintenance and approximately 4.0 miles of spur road new construction. Class I and II streams are present within the sale area.

<b>8</b>	<b>Wet Boot</b>	Pts. SWSW	17	60N/1W	250	3,400 MBF
		Pts. Govt. Lots 1-4	18	60N/1W		
		Pts. SENW, Pts. E2SW	18	60N/1W		
		Pts. NWSE, Pts. S2SE	18	60N/1W		

Estimated Auction: Spring 2019

The sale area is located approximately 5.5 miles west of Naples, Idaho in the Dodge Creek drainage. A seed tree harvest prescription will be implemented. Ground based and line yarding will be required. Developments will include approximately 5.5 miles of secondary road and 3.0 miles of spur road opening/maintenance, approximately 1.0 mile of spur road reconstruction and approximately 1.5 miles of spur road new construction. Class II streams are present within the sale area.

**IDAHO DEPARTMENT OF LANDS FY19 TIMBER SALE PLAN**

July 1, 2018 – June 30, 2019

Pend Oreille Lake  
Supervisory Area

SALE NO.	SALE NAME	SUBDIVISION	SEC	T & R	APPROXIMATE	
					ACREAGE	VOLUME
<b>9</b>	<b>West Branch White Pine</b>	Pts.	36	57N/5W	520	2,500 MBF

Estimated Auction: Spring 2019

The sale area is located approximately 5.0 miles north of Priest River, Idaho in the West Branch Priest River drainage. Seed tree and shelterwood harvest prescriptions will be implemented. Ground based and line skidding will be required. Developments will include approximately 5.0 miles of spur road opening/maintenance. Class I and II streams are present within the sale area.

<b>10</b>	<b>High Country Cedar</b> (Dual-entry)	Pts. W2SW, Pts. S2SE	7	57N/3W	550	1,200 MBF
		Pts. S2SW, Pts. SESE	8	57N/3W		2,000 Poles
		Pts. SWSW	9	57N/3W		
		Pts. N2N2	17	57N/3W		
		Pts. N2NE, Pts. NENW	18	57N/3W		

Estimated Auction: Spring 2019

The sale area is located approximately 10 miles west of Sandpoint, Idaho in the Happy Fork drainage. A selective harvest will remove cedar poles. Ground based and line skidding will be required. Developments will include approximately 5.0 miles of secondary road and 3.0 miles of spur road opening/maintenance, approximately 1.0 mile of spur road reconstruction, and approximately 1.0 mile of spur road new construction. Class I and II streams are present within the sale area.

**Additional small volume sales:** 100 100 MBF

**TOTALS:** 4,890 26,000 MBF  
2,000 Poles

# IDAHO DEPARTMENT OF LANDS FY19 TIMBER SALE PLAN

July 1, 2018 – June 30, 2019

Mica  
Supervisory Area

SALE NO.	SALE NAME	SUBDIVISION	SEC	T & R	APPROXIMATE	
					ACREAGE	VOLUME
1	<b>Thomas Creek</b>	Pts. W2	2	50N/2E	220	3,700 MBF
		Pts. E2	3	50N/2E		
		Pts. SE	10	49N/2E		
		Pts. S2	11	49N/2E		
		Pts. SW	12	49N/2E		
		Pts. N2	14	49N/2E		
		Pts. NENE	15	49N/2E		

Estimated Auction: Fall 2018

This sale is located approximately 4.0 air miles northeast of Pinehurst, Idaho in the Thomas Creek drainage. The harvest prescriptions consist of overstory removal and clearcut harvest. Both ground and cable based yarding will be utilized. Developments include approximately 1.0 mile of new secondary road construction and approximately 20 miles of secondary road opening. Several Class II streams are present.

2	<b>Fish Sticks</b>	Pts.	8	52N/05W	331	4,600 MBF
		Pts. SE	9	52N/05W		
		Pts. SWSW	10	52N/05W		
		Pts. NW	15	52N/05W		
		Pts. NE	16	52N/05W		
		Pts. N2	17	52N/05W		

Estimated Auction: Summer 2019

This sale is located approximately 5.0 air miles northwest of Rathdrum, Idaho in the Fish and Shove Creek drainages. The harvest prescriptions consist of shelterwood, overstory removal and clearcut harvests. Both ground and cable based yarding will be utilized. Developments include approximately 2.0 miles of new spur road construction and approximately 8.0 miles of secondary road opening. A Class I and several Class II streams are present within the sale boundary.

3	<b>Final Supper</b>	Pts. SW4	17	53N/5W	480	2,300 MBF
		Pts. S2NW, N2SW, SESW	18	53N/5W		
		Pts. SE4	18	53N/5W		
		Pts. N2NE, NENW	19	53N/5W		
		Pts. N2NW	20	53N/5W		

Estimated Auction: Winter 2019

This sale is located approximately 6.0 air miles west of Spirit Lake, Idaho in the Brickel Creek drainage. The harvest prescription consists of seed tree and clearcut harvest. Both ground and cable based yarding will be utilized. Developments include approximately 7.4 miles of secondary road opening. A Class I and several Class II streams are present within the sale boundary.

# IDAHO DEPARTMENT OF LANDS FY19 TIMBER SALE PLAN

July 1, 2018 – June 30, 2019

Mica  
Supervisory Area

SALE NO.	SALE NAME	SUBDIVISION	SEC	T & R	APPROXIMATE	
					ACREAGE	VOLUME
<b>4</b>	<b>Black Latour</b>	Pts. SE	21	48N/1W	450	4,000 MBF
		Pts. SW	22	48N/1W		
		Pts. NW, SESW, SWSE	27	48N/1W		
		Pts.	28	48N/1W		
		Pts. S2	29	48N/1W		
		Pts. NENE	33	48N/1W		
		Pts. N2NW	34	48N/1W		

Estimated Auction: Spring 2019

This sale is located approximately 3.0 air miles south of Rose Lake, Idaho in the Latour and Robinson Creek drainages. The harvest prescriptions consist of overstory removal, seed tree and clearcut harvest. Both ground and cable based yarding will be utilized. Developments include approximately 3.2 miles of new spur road construction and approximately 19 miles of secondary road opening. Several Class II streams are within the sale boundary.

<b>5</b>	<b>South Brickel Cedar</b> (Dual-entry)	Pts.	25	53N/6W	200	400 MBF 2,000 Poles
		Pts. NW	36	53N/5W		

Estimated Auction: Spring 2019

This sale is located approximately 8.0 air miles southwest of Spirit Lake, Idaho. The silvicultural prescription consists of selective harvest of pole quality cedar. Both ground and cable based yarding will be utilized. Developments include approximately 20 miles of secondary road opening. A Class I and several Class II streams are present.

<b>6</b>	<b>Brickel Sawlog</b>	Pts. Govt. Lots 5-7, Pts. SESW	18	53N/5W	415	3,000 MBF
		Pts. Govt. Lot 1, Pts. NENW	19	53N/5W		
		Pts. Govt. Lots 2-4, Pts. SWNE	13	53N/6W		
		Pts. E2SW, Pts. SE4	13	53N/6W		
		Pts. N2NE, Pts. NENW	24	53N/6W		

Estimated Auction: Winter 2018

This sale is located approximately 7.0 air miles west of Athol, Idaho in the Brickel Creek drainage. The harvest prescriptions consist of seed tree and clearcut. Both ground and cable based yarding will be utilized. Developments include approximately 1.07 miles of new spur road construction and approximately 12 miles of spur road opening. Several Class II streams are within the sale boundary.

**Additional small volume sales:** 0 0 MBF

**TOTALS:** 2,096      18,000 MBF  
2,000 Poles

# IDAHO DEPARTMENT OF LANDS FY19 TIMBER SALE PLAN

July 1, 2018 – June 30, 2019

Mica  
Supervisory Area

Idaho Parks and Recreation/Fish and Game

SALE NO.	SALE NAME	SUBDIVISION	SEC	T & R	APPROXIMATE ACREAGE	VOLUME
	<b>Beavertail</b>	Pts. S2 Pts. NW, Pts. NWNE	3 10	53N/2W 53N/2W	200	1,000 MBF

Estimated Auction: Summer 2018

This sale is located approximately 1.0 air mile south of Bayview, Idaho within Farragut State Park and is a joint sale between Idaho Parks and Recreation and Idaho Fish and Game. The harvest prescriptions consist of seed tree and shelterwood harvest. The sale will utilize ground based skidding methods. Developments include approximately 0.5 mile of new spur road construction and 1.5 miles of spur road opening. Lake Pend Oreille is adjacent to the sale area.

# IDAHO DEPARTMENT OF LANDS FY19 TIMBER SALE PLAN

July 1, 2018 – June 30, 2019

St. Joe  
Supervisory Area

SALE NO.	SALE NAME	SUBDIVISION	SEC	T & R	APPROXIMATE	
					ACREAGE	VOLUME
1	<b>West Fork Patches</b>	Pts. SWNW	25	42N/1E	157	6,500 MBF
		Pts. E2SW	25	42N/1E		80 MBF
		Pts. W2SE	25	42N/1E		Cedar
		Pts. Govt. Lots 1 & 2	30	42N/2E		Products
		Pts. NENW	30	42N/2E		

Estimated Auction: Fall 2018

This sale is located approximately 4.0 miles southwest of Clarkia, Idaho, in the West Fork of the St. Maries River drainage. Seed tree harvest prescriptions are planned. Ground based skidding and cable yarding will be required. Developments include approximately 1.0 mile of spur and 1.4 miles of secondary road new construction. Class II streams are present within the sale area.

2	<b>Mica Quarters</b>	Pts. SENE	23	45N/2E	289	4,085 MBF
		Pts. NESE	23	45N/2E		75 MBF
		Pts. Govt. Lots 1-5	24	45N/2E		Cedar
		Pts. SWNE	24	45N/2E		Products
		Pts. S2NW	24	45N/2E		
		Pts. N2SW	24	45N/2E		
		Pts. Govt. Lot 4	18	45N/3E		
		Pts. SESW	18	45N/3E		
Pts. S2SE	18	45N/3E				

Estimated Auction: Summer 2018

This sale is located approximately 3.0 miles southeast of Calder, Idaho, in the Mica Creek drainage. Clearcut, seed tree and overstory removal harvest prescriptions are planned. Both ground based skidding and cable yarding will be required. Developments include approximately 2.09 miles of secondary road new construction and 17.4 miles of secondary road opening. Class II streams are present within the sale area.

3	<b>No More School OSR</b>	Pts.	36	45N/4W	357	9,635 MBF
		Pts. N2	21	45N/2W		100 MBF
		Pts. W2	25	45N/2W		Cedar
		Pts. N2	27	45N/2W		Products
		Pts. S2NE, Pts. NESW, Pts. N2SE	36	45N/2W		
		Pts. NE	36	46N/3W		

Estimated Auction: Summer 2018

The sale is located approximately 12 miles southwest of St. Maries, Idaho, in the Benewah Creek drainage. The harvest prescriptions include shelterwood, seed tree, overstory removal, and 229 total clearcut acres divided among four units. Both ground based skidding and cable yarding will be utilized. Developments include approximately 6.5 miles of secondary road new construction, approximately 4.5 miles of secondary road reconstruction, and approximately 7.0 miles of secondary road opening. Class I and II streams are adjacent and present within the sale area.



## IDAHO DEPARTMENT OF LANDS FY19 TIMBER SALE PLAN

July 1, 2018 – June 30, 2019

St. Joe  
Supervisory Area

SALE NO.	SALE NAME	SUBDIVISION	SEC	T & R	APPROXIMATE	
					ACREAGE	VOLUME
4	<b>Crawdad</b>	Pts. NE, Pts. E2SE	20	42N/5E	155	6,500 MBF
		Pts. SWNE, Pts. W2	21	42N/5E		10 MBF
		Pts. W2SE	21	45N/1E		Cedar Products

Estimated Auction: Summer 2018

This sale is located approximately 45 miles southeast of Clarkia, Idaho, in the Cedar Creek drainage. A shelterwood harvest prescription is planned. Ground based skidding will be required. Developments include approximately 6.1 miles of mainhaul road surfacing with surfacing shot and crushed by the purchaser out of the Scott Road rock pit and 7.0 miles of secondary road opening. Class II streams are present within the sale area.

5	<b>Cluggs</b>	Pts. E2	11	41N/5E	146	4,800 MBF
		Pts. S2NE, Pts. S2NW	12	41N/5E		90 MBF
		Pts. S2	12	41N/5E		Cedar
		Pts. N2	13	41N/5E		Products

Estimated Auction: Spring 2019

This sale is located approximately 26 air miles southeast of Clarkia, Idaho, in the Little North Fork Clearwater River drainage. Seedtree and clearcut harvest prescriptions are planned. Ground based skidding and cable yarding will be required. Developments include approximately 2.0 miles of secondary road new construction and 4.0 miles of secondary road opening. Class II streams are present within the sale area.

6	<b>Old Olson</b>	Pts. SE	24	44N/1E	260	6,700 MBF
		Pts. NE, Pts. E2NW	25	44N/1E		300 MBF
		Pts. N2NESW	25	44N/1E		Cedar
		Pts. SESE	25	44N/1E		Products
		Pts. NENE	36	44N/1E		
		Pts. Govt. Lots 1 & 2	30	44N/1E		
		Pts. SE	30	44N/2E		
		Pts. NWNE, Pts. SW	31	44N/2E		

Estimated Auction: Summer 2018

This sale is located approximately 6.0 miles northeast of Fernwood, Idaho in the Olson Creek drainage. Seed tree and overstory removal harvest prescriptions are planned. Both ground based skidding and cable yarding will be required. Developments include approximately 0.6 mile of secondary road new construction, approximately 3.84 miles of secondary road reconstruction and approximately 6.88 miles of secondary road opening. Class I and Class II streams are present within the sale area.

**IDAHO DEPARTMENT OF LANDS FY19 TIMBER SALE PLAN**

July 1, 2018 – June 30, 2019

St. Joe  
Supervisory Area

SALE NO.	SALE NAME	SUBDIVISION	SEC	T & R	APPROXIMATE	
					ACREAGE	VOLUME
7	<b>Fernwood Flats</b>	Pts.	1	43N/1W	285	5,185 MBF
		Pts.	4	43N/1W		250 MBF
		Pts.	9	43N/1W		Cedar
		Pts.	16	43N/1W		Products
		Pts.	21	43N/1W		
		Pts.	25	43N/1W		
		Pts.	26	43N/1W		
		Pts.	27	43N/1W		
		Pts.	36	43N/1W		
		Pts.	26	44N/1W		
		Pts.	35	44N/1W		
		Pts.	36	44N/1W		

Estimated Auction: Spring 2019

This sale is located approximately 1.0 mile west of Fernwood, Idaho, in the North Fork Tyson Creek, Tyson Creek, Little Carpenter Creek, Carpenter Creek and St. Maries River drainages. Shelterwood and clearcut harvest prescriptions are planned. Ground based skidding and cable yarding will be required. Developments include approximately 2.0 miles of secondary road new construction and 3.0 miles of secondary road opening. Class II streams are present within the sale area.

8	<b>Beaver Camp</b>	Pts. N2NW	1	44N/1W	548	9,745 MBF
		Pts. SWSW	1	44N/1W		1,085 MBF
		Pts. SWSW	30	45N/1E		Cedar
		Pts. NW, Pts. NWSW	31	45N/1E		Products
		Pts. SESE	25	45N/1W		
		Pts. E2, Pts. NW	34	45N/1W		
		Pts. N2SW, Pts. SWSW	34	45N/1W		
		Pts. W2NW, Pts. E2SE	35	45N/1W		
		Pts. N2NE, Pts. W2SW	36	45N/1W		
		Pts. SESW, Pts. E2SE	36	45N/1W		

Estimated Auction: Summer 2018

This sale is located approximately 14 miles southeast of St. Maries, Idaho, in the Beaver Creek, Soldier Creek, and Davis Creek drainages. A shelterwood harvest prescription is planned. Both ground based skidding and cable yarding will be required. Developments include approximately 8.0 miles of secondary road opening. Class II streams are present within the sale area.

**IDAHO DEPARTMENT OF LANDS FY19 TIMBER SALE PLAN**

July 1, 2018 – June 30, 2019

St. Joe  
Supervisory Area

SALE NO.	SALE NAME	SUBDIVISION	SEC	T & R	APPROXIMATE	
					ACREAGE	VOLUME
<b>9</b>	<b>South Boehls</b>	Pts. S2S2	13	41N/4E	473	2,500 MBF
		Pts. SESE	14	41N/4E		0 MBF
		Pts. NENE, Pts. N2SESW	23	41N/4E		Cedar
		Pts. N2N2, Pts. N2S2N2	24	41N/4E		Products
		Pts. Govt. Lots 1 & 2, Pts. N2	19	41N/5E		
		Pts. NWNWNW	19	41N/5E		
		Pts. NENW	19	41N/5E		

Estimated Auction: Winter 2019

This sale is located approximately 15 miles northeast of Elk River, Idaho, in the North Fork of the Clearwater River and the Little North Fork of the Clearwater River drainages. Overstory removal harvest prescription is planned. Both ground based skidding and cable yarding will be required. Developments include approximately 10 miles of secondary road opening. Class II streams are present within the sale area.

<b>Additional small volume sales:</b>	<u>230</u>	<u>350 MBF</u>
	<b>TOTALS:</b>	2,900
		56,000 MBF
		1,990 MBF
		Cedar
		Products

Idaho Parks and Recreation

SALE NO.	SALE NAME	SUBDIVISION	SEC	T & R	APPROXIMATE	
					ACREAGE	VOLUME
	<b>Northern Sky</b>	Pts. NWNW	29	44N/5W	130	2,210 MBF
		Pts. Govt. Lots 9 & 10	30	44N/5W		

Estimated Auction: Summer 2018

This sale is located approximately 4.5 miles west of Desmet, Idaho, in the Andrew Springs drainage of Mary Minerva McCroskey State Park. Shelterwood harvest prescription is planned. Both ground based skidding and cable yarding will be required. Developments include approximately 1.0 mile of secondary road new construction and 0.4 mile of secondary road reconstruction. Class II streams are present within the sale area.

# IDAHO DEPARTMENT OF LANDS FY19 TIMBER SALE PLAN

July 1, 2018 – June 30, 2019

## Clearwater Supervisory Area

SALE NO.	SALE NAME	SUBDIVISION	SEC	T & R	APPROXIMATE	
					ACREAGE	VOLUME
1	<b>Powerline OSR</b>	Pts. Govt. Lots 3 & 4, Pts. SENW	1	37N/3E	410	1,205 MBF
		Pts. E2NE, Pts. SENW	9	37N/3E		
		Pts. NESW, Pts. SE	9	37N/3E		
		Pts. W2NW, Pts. NWSW	10	37N/3E		
		Pts. SESW, Pts. SE	36	38N/3E		
		Pts. NESW, Pts. Govt. Lots 3 & 4	31	38N/4E		

Estimated Auction: Summer 2018

This sale is located approximately 10 miles northeast of Orofino, Idaho, within the Canyon Creek drainage and 17 miles northeast of Orofino in the Whiskey Creek drainage. An overstory removal prescription will be conducted on the entire sale area. Tractor and cable yarding methods will be required. Developments include 7.4 miles of existing spur road opening. There are several Class II streams within the sale area.

2	<b>Canyon Flats</b>	Pts. Govt. Lots 3 & 4	6	37N/3E	377	7,300 MBF
		Govt. Lots 5 & 6	6	37N/3E		
		Pts. Govt. Lot 7	6	37N/3E		
		Pts. SWNE, Pts. SENW	6	37N/3E		
		Pts. E2SW, Pts. W2SE	6	37N/3E		
		Pts. Govt. Lot 1	7	37N/3E		

Estimated Auction: Fall 2018

This sale is located 7.0 miles northeast of Orofino, Idaho in the Canyon Creek drainage. Clearcut and seed tree prescriptions will be utilized. Tractor yarding will be required on this sale. Development work includes approximately 0.92 mile of spur road opening, 0.54 mile of new spur road construction, and 2.56 miles of spur road reconstruction. Several Class II streams exist adjacent to and within the sale area.

3	<b>Anchor Nine Cedar (Dual-entry)</b>	Pts. E2NE, Pts. E2SE	20	40N/5E	409	7,000 MBF 8,000 Poles
		Pts. S2SE	21	40N/5E		
		Pts. SWNW	27	40N/5E		
		Pts. NWNE, Pts. S2NE, Pts. NW	28	40N/5E		
		Pts. NENE	29	40N/5E		

Estimated Auction: Summer 2018

This sale is located approximately 10 air miles north of Headquarters, Idaho in the Benton Creek drainage. A pole quality western red cedar removal prescription will be utilized. Both tractor and cable yarding systems will be required. Development work includes approximately 7.6 miles of existing spur road opening and approximately 0.6 mile of new spur road construction. Several Class II streams flow within the sale area.

4	<b>Deer Meadow</b>	Pts. NENE	36	37N/2E	191	3,890 MBF
		Pts. Govt. Lots 3 & 4, S2NE	30	37N/3E		
		Pts. E2SW, Pts. SE	30	37N/3E		
		Pts. Govt. Lots 1 & 2, Pts. NWNE	31	37N/3E		
		Pts. NENW	31	37N/3E		

Estimated Auction: Spring 2019

This sale is located 7.0 miles northeast of Orofino, Idaho in the Deer Creek drainage. The silvicultural prescription for the entire sale area is a clearcut. Tractor yarding will be required on this sale. Development work includes approximately 1.0 mile of new spur road construction. A Class II stream is within the sale boundary.

# IDAHO DEPARTMENT OF LANDS FY19 TIMBER SALE PLAN

July 1, 2018 – June 30, 2019

## Clearwater Supervisory Area

SALE NO.	SALE NAME	SUBDIVISION	SEC	T & R	APPROXIMATE ACREAGE	VOLUME
<b>5</b>	<b>Backyard Seed</b>	Pts. NWNE, Pts. S2NE	36	37N/3E	165	2,475 MBF
		Pts. W2, Pts. SE	36	37N/3E		

Estimated Auction: Spring 2019

This sale is located 8.0 miles northeast of Orofino, Idaho in the Orofino Creek drainage. The silvicultural prescription for the entire sale area is a shelterwood harvest. Tractor yarding will be required on this sale. Development work includes approximately 4.25 miles of spur road reconstruction. Several Class II streams are located within the sale area.

<b>6</b>	<b>Rainy West</b>	Pts. SWNE, Pts. SESW	16	37N/4E	629	6,680 MBF
		Pts. W2SE	16	37N/4E		
		Pts. SWNW, Pts. NWSW	17	37N/4E		
		Pts. SESW	17	37N/4E		
		Pts. SENE, Pts. Govt. Lots 2	18	37N/4E		
		Pts. Govt. Lots 3-4, Pts. E2SW	18	37N/4E		
		Pts. N2SE, Pts. SWSE	18	37N/4E		
		Pts. E2NW, Pts. Govt. Lots 1-2	19	37N/4E		
		Pts. NESW, Pts. Govt. Lots 3-4	19	37N/4E		
		Pts. NENE, Pts. S2NE, Pts. NW	20	37N/4E		
		Pts. NESW, Pts. N2SE	20	37N/4E		
		Pts. NWNW, Pts. S2NW	21	37N/4E		

Estimated Auction: Spring 2019

This sale is located approximately 13 miles northeast of Orofino, Idaho, in the Rainy, Whiskey, Cow, Cedar and Crooked Creek drainages. The sale will be a combination of seed tree, clearcut, and overstory removal prescriptions. The sale will require both tractor and cable yarding methods. Development work includes 13.1 miles of existing spur road opening, 0.67 mile of secondary road opening and 0.93 mile of new spur road construction. There are several Class II streams within the sale area and two Class I streams, Whiskey and Crooked Creek, which are directly adjacent to the sale boundary.

<b>7</b>	<b>North Town</b>	Pts. N2, Pts. N2S2	36	40N/4E	198	7,600 MBF
----------	-------------------	--------------------	----	--------	-----	-----------

Estimated Auction: Spring 2019

This sale is located 10.5 miles northwest of Headquarters, Idaho in the Elkberry Creek drainage. A clearcut prescription is proposed for the sale area. Tractor and cable yarding will be required on this sale. Development work includes approximately 2.6 miles of new spur road construction and 3.5 miles of existing spur road reconstruction. Several Class II streams are present within the sale area.

# IDAHO DEPARTMENT OF LANDS FY19 TIMBER SALE PLAN

July 1, 2018 – June 30, 2019

## Clearwater Supervisory Area

SALE NO.	SALE NAME	SUBDIVISION	SEC	T & R	APPROXIMATE ACREAGE	VOLUME
<b>8</b>	<b>East Calhoun</b>	Pts. Govt. Lots 2 & 3, Pts. SESE	26	38N/5E	220	3,620 MBF
		Pts. SWNE	27	38N/5E		
		Pts. S2NW	27	38N/5E		
		Pts. SW	27	38N/5E		
		Pts. NENW	34	38N/5E		

Estimated Auction: Summer 2018

This sale is located 1.5 miles southwest of Headquarters, Idaho in the Calhoun Creek drainage. Seed tree and clearcut prescriptions are proposed for the sale area. Tractor and cable yarding will be required on this sale. Development work includes approximately 0.92 mile of new spur road construction and 4.57 miles of existing spur road reconstruction. The sale boundary is adjacent to a Class I stream (Calhoun Creek) and several Class II streams are present within the sale area.

<b>9</b>	<b>Snake Face</b>	Pts. SE	30	38N/5E	450	3,785 MBF
		Pts. NE, Pts. E2SE	31	38N/5E		
		Pts. SWNW, Pts. SW, Pts. W2SE	32	38N/5E		

Estimated Auction: Fall 2018

This sale is located approximately 3.5 air miles southwest of Headquarters, Idaho in the Snake Creek drainage. A combination of seed tree, clearcut, and overstory removal prescriptions will be utilized. Both tractor and cable yarding systems will be required. Development work includes approximately 9.2 miles of existing spur road opening and approximately 0.2 mile of new spur road construction. Several Class II streams flow within the sale area. Several Class I forks, comprising the head of Snake Creek, are adjacent to this proposed sale's boundary.

**Additional small volume sales:** 300 445 MBF

**TOTALS:** 3,349 44,000 MBF  
8,000 Poles

# IDAHO DEPARTMENT OF LANDS FY19 TIMBER SALE PLAN

July 1, 2018 – June 30, 2019

## Ponderosa Supervisory Area

SALE NO.	SALE NAME	SUBDIVISION	SEC	T & R	APPROXIMATE	
					ACREAGE	VOLUME
<b>1</b>	<b>Motor Boat</b>	Pts. Govt. Lot 1, Pts. S2NE, Pts. NW	5	39N/4E	370	8,600 MBF
		Pts. N2SW, Pts. SWSW	5	39N/4E		
		Pts. N2NE, Pts. SENE, Pts. SE	6	39N/4E		
		Pts. NW/NW	8	39N/4E		

Estimated Auction: Spring 2018

This sale is located approximately 9.0 air miles east of Elk River, Idaho in the Boathouse Creek drainage. This sale will be harvested utilizing clearcut, overstory removal, and seed tree silvicultural prescriptions. Ground yarding and cable yarding methods are required to harvest this sale. Approximately 1.25 miles of spur road will be constructed. The sale is adjacent to a Class I stream and has several Class II streams within and adjacent to the sale area, all of which are tributaries to the Dworshak Reservoir.

<b>2</b>	<b>Alder Awesome</b>	Pts. SESW	25	39N/1E	185	7,270 MBF
		Pts. SESW, Pts. S2SE	26	39N/1E		
		Pts. SENE	34	39N/1E		
		Pts. NE, Pts. NENW, Pts. S2NW	35	39N/1E		
		Pts. N2SE, Pts. SWSE	35	39N/1E		
		Pts. N2NW, Pts. SWNW	36	39N/1E		

Estimated Auction: Summer 2018

This sale is located approximately 10 air miles northeast of Southwick, Idaho in the Long Meadow Creek and North Fork of Dick's Creek drainages. This sale will be harvested utilizing seed tree/cedar pole reserve silvicultural systems. Ground and cable yarding methods are required to harvest this sale. Approximately 4.56 miles of spur road will be constructed. The sale has several Class II streams within and adjacent to the sale area, all of which are tributaries to Dworshak Reservoir.

<b>3</b>	<b>Hog Corral</b>	W2NE, N2NW, Pts. SW, E2SE	9	40N/1W	350	5,100 MBF
		Pts. NW/NE, Pts. N2NW	16	40N/1W		

Estimated Auction: Spring 2019

This sale is located approximately 1.0 mile north of Helmer, Idaho in the Corral Creek and Hog Meadow Creek drainages. This sale will be harvested utilizing overstory removal and clearcut silvicultural prescriptions. Tractor yarding methods will be required to harvest this sale. Approximately 2.0 miles of spur road will be constructed. There are Class I streams adjacent to the sale area. There are several intermittent Class II streams within the sale area.

## IDAHO DEPARTMENT OF LANDS FY19 TIMBER SALE PLAN

July 1, 2018 – June 30, 2019

### Ponderosa Supervisory Area

SALE NO.	SALE NAME	SUBDIVISION	SEC	T & R	APPROXIMATE	
					ACREAGE	VOLUME
4	<b>Purdue Cedar</b> (Single-entry)	Pts. W2SW, Pts. SESW	16	41N/1W	272	6,200 MBF
		Pts. E2SE	17	41N/1W		5,000 Poles
		Pts. E2SW, Pts. W2SE, Pts. SESE	19	41N/1W		
		Pts. NE, Pts. S2NW, Pts. N2SW	20	41N/1W		
		Pts. SWSW	20	41N/1W		

Estimated Auction: Summer 2018

This sale is located approximately 1.0 air mile north and 5.0 air miles east of Bovill, Idaho in the Purdue Creek drainage and Bloom Creek drainage. This sale will be harvested utilizing clearcut and overstory removal silvicultural prescriptions. Cable and tractor yarding methods are required to harvest this sale. Approximately 2.5 miles of spur road will be constructed. The sale is adjacent to Class I streams and has several Class II streams within and adjacent to the sale area, all of which are tributaries to Purdue Creek and Bloom Creek.

5	<b>Little Bear</b>	Pts. N2NE, Pts. NENW	19	41N/2W	460	7,950 MBF
		Pts. N2NW, Pts. SWNW	20	41N/2W		
		Pts. W2SE, Pts. SESE	29	41N/2W		
		Pts. NE	32	41N/2W		
		Pts. SWNE, Pts. E2NW, Pts. NESW	10	40N/2W		
		Pts. S2SW, Pts. NWSE	10	40N/2W		

Estimated Auction: Spring 2019

This sale is located approximately 1.0 air mile northwest of Deary, Idaho in the Brush Creek drainage, and 7.0 air miles northwest of Deary, Idaho in the Schwartz Creek, Big Bear Creek, and Little Bear Creek drainages. This sale will be harvested utilizing clearcut, seed tree, and overstory silvicultural prescriptions. Tractor skidding and cable yarding methods are required to harvest this sale. Approximately 1.5 miles of new spur road construction will be required. There are Class II streams within each unit of the sale area, and the Schwartz Creek and East Fork Big Bear Creek Class I streams are directly adjacent to two units.

6	<b>Burnt Crow</b>	Pts. S2NE, Pts. S2NW, Pts. N2SW	13	39N/2E	195	5,030 MBF
		Pts. N2SE	13	39N/2E		

Estimated Auction: Summer 2018

This sale is located approximately 4.0 air miles southeast of Elk River, Idaho. The units are located in the Burnt Creek and Elk Creek drainages. The silvicultural prescriptions will include clearcut and seed tree method. Tractor and cable yarding methods will be utilized to harvest this sale. Developments will include 2.2 miles of spur road construction and 2.0 miles of road opening. There are several Class II streams within and adjacent to the sale area.



# IDAHO DEPARTMENT OF LANDS FY19 TIMBER SALE PLAN

July 1, 2018 – June 30, 2019

Ponderosa  
Supervisory Area

SALE NO.	SALE NAME	SUBDIVISION	SEC	T & R	APPROXIMATE ACREAGE	VOLUME
7	<b>Bovill Cleanup</b>	Pts. W2SW	5	40N/1E	85	2,700 MBF
		Pts. S2SE	6	40N/1E		
		Pts. NWNE, Pts. N2NW	36	41N/1E		

Estimated Auction: Summer 2018

This sale is located approximately 1.0 air mile southeast and 5.0 air miles east of Bovill, Idaho in the East Fork of the Potlatch River and Pivash Creek drainages. This sale will be harvested utilizing clearcut silvicultural prescriptions. Cable and tractor yarding methods are required to harvest this sale. Approximately 1.0 mile of spur road will be constructed. The sale is adjacent to Class I streams and has Class II streams within and adjacent to the sale area, all of which are tributaries to the East Fork of the Potlatch River.

**Additional small volume sales:**

100                      150 MBF

**TOTALS:**    2,017                      43,000 MBF  
5,000 Poles

## IDAHO DEPARTMENT OF LANDS FY19 TIMBER SALE PLAN

July 1, 2018 – June 30, 2019

Maggie Creek  
Supervisory Area

SALE NO.	SALE NAME	SUBDIVISION	SEC	T & R	APPROXIMATE	
					ACREAGE	VOLUME
1	<b>Thunderbird Flat</b>	Pts. S2SW, Pts. S2SE	5	35N/4E	335	2,200 MBF
		S2	6	35N/4E		
		Pts. N2SE, S2SE	8	35N/4E		

Estimated Auction: Spring 2019

This sale is located approximately 1.0 mile west and 2.0 miles northwest of Weippe, Idaho in the Jim Ford Creek drainage. One overstory and two shelterwood units are planned with this sale. Harvesting operations will be accomplished using ground based systems. Approximately 4.5 miles of road opening is proposed. One Class II intermittent stream is present within the sale area.

2	<b>Burcham OSR</b>	Pts. NE, Pts. NENW	3	35N/5E	250	2,500 MBF
		Pts. E2NE	32	36N/5E		
		Pts. NW	33	36N/5E		

Estimated Auction: Spring 2019

This sale is located approximately 5.0 miles northeast of Weippe, Idaho, in the Jim Ford Creek and Jim Brown Creek drainages. This sale is comprised of approximately three overstory removal units. Harvesting operations will be accomplished using ground based systems. Approximate development work will be 6.6 miles of spur road reconstruction and 0.7 mile of spur road opening associated with this sale. Four Class II intermittent streams are present within the sale area.

3	<b>Cedar Remix</b> (Single-entry)	Pts. E2NE, Pts. N2SE	9	33N/5E	151	5,100 MBF 3,000 Poles
		Pts. W2NW, Pts. NWSW	10	33N/5E		
		Pts. S2NE, Pts. SESW, Pts. SW	15	33N/5E		
		Pts. NWNE, Pts. NENW	22	33N/5E		

Estimated Auction: Winter 2019

This sale is located 8.0 miles northeast of Kooskia, Idaho in the Maggie Creek drainage. In order to meet silvicultural objectives, one overstory removal unit and two shelterwood units will be utilized in a single-entry harvest to remove pole quality cedar. Tractor yarding will be required. Development work includes approximately 1.03 miles of spur road new construction and 2.75 miles of spur road reconstruction. There are several Class II streams within the sale area.

## IDAHO DEPARTMENT OF LANDS FY19 TIMBER SALE PLAN

July 1, 2018 – June 30, 2019

### Maggie Creek Supervisory Area

SALE NO.	SALE NAME	SUBDIVISION	SEC	T & R	APPROXIMATE ACREAGE	VOLUME
<b>4</b>	<b>Wolfenrock</b>	Pts. NE, Pts. S2	10	34N/5E	206	4,500 MBF
		Pts. W2NW, Pts. NWSW	11	34N/5E		
		Pts. S2NE, Pts. SENW, Pts. SW	14	35N/5E		
		Pts. W2SE	14	35N/5E		
		Pts. NWNW, Pts. E2NW	15	35N/5E		

Estimated Auction: Fall 2018

This sale is located 8.0 miles southeast of Weippe, Idaho in the Pete & Charlie Creek and Rock Creek drainages. In order to meet silvicultural objectives, timber harvest will include two clearcut units and one seed tree unit. Harvesting will be accomplished with ground based yarding methods. Developments will include approximately 1.75 miles of new spur road construction and 0.70 mile of spur road reconstruction. Three Class II streams are present within the sale area.

<b>5</b>	<b>Pulpslayer</b>	Pts. N2, Pts. SW, Pts. W2SE	20	35N/5E	305	5,000 MBF
		Pts. S2NW, Pts. N2SW	28	35N/5E		
		Pts. S2NE, Pts. NW, Pts. S2	29	35N/5E		
		Pts. N2NW	32	35N/5E		

Estimated Auction: Spring 2019

This sale is located 3.5 miles southeast of Weippe, Idaho in the Wilson Creek drainage. This sale is the final sale of the Land Board approved, Maggie Creek Pulp Plan. In order to meet silvicultural objectives, timber harvest will include five clearcut units. Harvesting will be accomplished with ground based yarding methods. Developments will include approximately 0.75 mile of new spur road construction, 0.40 mile of spur road reconstruction, and 1.35 miles of spur road opening. Four Class II streams exist within the sale area.

<b>6</b>	<b>Blue Gate</b>	Pts. NE, Pts. E2SW, Pts. SE	16	32N/4W	220	700 MBF
----------	------------------	-----------------------------	----	--------	-----	---------

Estimated Auction: Fall 2018

This sale is located 13 miles southwest of Winchester, Idaho in the headwaters of Captain John Creek drainage. This sale will consist of two units, which include shelterwood and selective thinning silvicultural prescriptions. Harvesting will be accomplished with ground based yarding methods. Developments will include approximately 3.4 miles of spur road reconstruction. Captain John Creek (Class II) originates within the sale area and two other intermittent Class II streams intersect the sale area.

**Additional small volume sales:** 0 0 MBF

<b>TOTALS:</b>	1,467	20,000 MBF 3,000 Poles 4,000 Pulp
----------------	-------	---

# IDAHO DEPARTMENT OF LANDS FY19 TIMBER SALE PLAN

July 1, 2018 – June 30, 2019

Payette Lakes  
Supervisory Area

SALE NO.	SALE NAME	SUBDIVISION	SEC	T & R	APPROXIMATE	
					ACREAGE	VOLUME
1	<b>Priceless Ton</b>	Pts.	26	19N/1W	301	25,102 Tons (4,435 MBF)
		Pts.	35	19N/1W		
		Pts.	2	18N/1W		

Estimated Auction: Spring 2019

This sale is located approximately 9.0 miles west of New Meadows, Idaho in the Weiser River drainage. The sale consists of clearcut and shelterwood prescriptions. All of the sale volume will be harvested with ground based equipment. Approximately 0.25 mile of spur road will be constructed and 0.77 mile of spur road will be reconstructed and/or improved. Two unnamed Class II streams are present within the sale boundary.

2	<b>Sky High Ton</b>	Pts.	2	14N/4E	183	11,999 Tons (2,120 MBF)
		Pts.	3	14N/4E		
		Pts.	10	14N/4E		
		Pts.	11	14N/4E		

Estimated Auction: Spring 2019

This sale is located approximately 6.0 miles northeast of Cascade, Idaho in the Beaver Creek drainage. The silvicultural prescription is a seed tree. The sale area will be harvested using ground based and skyline yarding. Approximately 9.0 miles of spur road and 5.0 miles of secondary road will be opened. Streams within the sale area are Class II tributaries to Beaver Creek.

3	<b>Greasewood Ton</b>	Pts.	6	16N/2W	360	21,734 Tons (3,840 MBF)
		Pts.	1	16N/3W		
		Pts.	31	17N/2W		

Estimated Auction: Summer 2018

This sale is located approximately 9.0 miles northwest of Council, Idaho in the Johnson Creek drainage. Individual tree selection, clearcut and seed tree prescriptions will be implemented. All of the sale volume will be harvested with ground based equipment. Approximately 2.2 miles of secondary road will be opened and 2.4 miles will be reconstructed to improve drainage structures. Approximately 3.5 miles of spur road will be opened and 1.6 miles will be reconstructed to improve drainage structures. Approximately 0.15 mile of new spur road construction is planned. Streams within the sale area are Class II, tributaries to Olive Creek.

# IDAHO DEPARTMENT OF LANDS FY19 TIMBER SALE PLAN

July 1, 2018 – June 30, 2019

## Payette Lakes Supervisory Area

SALE NO.	SALE NAME	SUBDIVISION	SEC	T & R	APPROXIMATE ACREAGE	APPROXIMATE VOLUME
<b>4</b>	<b>Olive Ton</b>	Pts.	22	17N/3E	280	12,338 Tons (2,180 MBF)
		Pts.	23	17N/3E		
		Pts.	24	17N/3E		

Estimated Auction: Summer 2018

This sale is located approximately 12 miles northwest of Council, Idaho in the Olive Creek drainage. The sale consists of shelterwood, overstory removal and clearcut prescriptions. All of the sale volume will be harvested with ground based equipment. Approximately 3.7 miles of main road, 1.8 miles of secondary road, and 1.7 miles of spur road will be opened. Approximately 3.7 miles of secondary road and 0.4 mile of spur road will be reconstructed. Streams within the sale area are Class II, tributaries to Olive Creek.

<b>5</b>	<b>Poor Cruick Ton</b>	Pts.	18	18N/4E	296	24,900 Tons (4,400 MBF)
		Pts.	19	18N/4E		
		Pts.	20	18N/4E		

Estimated Auction: Summer 2018

This sale is located approximately 3.5 miles southeast of McCall, Idaho in the Boulder Creek drainage. A shelterwood prescription will be implemented. All of the sale volume will be harvested with ground based equipment. Approximately 2.4 miles of spur road will be opened, 2.07 miles of spur road will be reconstructed, 0.20 mile of spur road constructed, 0.83 mile of secondary road will be opened and 3.31 miles of secondary road will be reconstructed. Approximately 0.77 mile of spur road is planned to be surfaced with 2.5-inch minus rock, 0.14 mile of spur road is planned to be surfaced with pit run rock, and 0.47 mile of secondary road is planned to be surfaced with 2.5-inch minus rock. A Class I stream and small pond water impoundment occurs at 75 feet outside certain segments of the sale boundary and one Class II perennial stream is within the sale area.

<b>6</b>	<b>Guard Point Ton</b>	Pts.	2	19N/1W	373	11,518 Tons (1,580 MBF)
----------	------------------------	------	---	--------	-----	----------------------------

Estimated Auction: Summer 2018

This sale is located approximately 9.0 miles northwest of New Meadows, Idaho in the Weiser River drainage. Both an overstory removal and a diameter limit prescription will be implemented within the sale area. All of the sale volume can be harvested with ground based equipment. Approximately 3.5 miles of spur road will be reconstructed and/or improved. Several intermittent Class II tributaries to the Weiser River are present within the sale area.

<b>Additional small volume sales:</b>	57	2,519 Tons (445 MBF)
---------------------------------------	----	-------------------------

<b>TOTALS:</b>	1,850	110,110 Tons (19,000 MBF)
----------------	-------	------------------------------

# IDAHO DEPARTMENT OF LANDS FY19 TIMBER SALE PLAN

July 1, 2018 – June 30, 2019

Payette Lakes  
Supervisory Area

Idaho Fish and Game

SALE NO.	SALE NAME	SUBDIVISION	SEC	T & R	APPROXIMATE ACREAGE	VOLUME
	<b>Horsethief FG Ton</b>	Pts.	25	14N/4E	100	1,132 Tons (200) MBF

Estimated Auction: Fall 2018

This sale is located approximately 6.0 miles east of Cascade, Idaho adjacent to Horsethief Reservoir in the Big Creek drainage. The prescription will combine sanitation, salvage and commercial thinning. All of the sale volume can be harvested with ground based equipment. Approximately 1.0 mile of spur road will be reconstructed and/or improved. This sale is on land administered by Idaho Fish and Game.

**IDAHO DEPARTMENT OF LANDS FY19 TIMBER SALE PLAN**

July 1, 2018 – June 30, 2019

Southwest  
Supervisory Area

SALE NO.	SALE NAME	SUBDIVISION	SEC	T & R	APPROXIMATE	
					ACREAGE	VOLUME
<b>1</b>	<b>South Mountain Ton</b>	Pts. NE, Pts. SENW	34	7S/5W	455	38,200 Tons (6,600 MBF)
		Pts. N2SE, Pts. SESE	34	7S/5W		
		Pts. SW	34	7S/5W		
		Pts. Govt. Lots 2-4, Pts. SWNE	1	8S/5W		
		Pts. S2NW, Pts. NWSE	1	8S/5W		
		Pts. SW	1	8S/5W		
		Pts. Govt. Lots 1-4, Pts. S2N2	2	8S/5W		
		Pts. N2S2, Pts. S2SE	2	8S/5W		
		Pts. Govt. Lot 1	3	8S/5W		
		Pts. NENE	11	8S/5W		
		Pts. NWNW	12	8S/5W		

Estimated Auction: Summer 2018

This sale is located approximately 16 miles southeast of Jordan Valley, Oregon in the Iron Man, Old Man and the South Mountain drainages. All drainages are tributary to South Boulder Creek which drains into Jordan Creek. This sale is marked to leave selective harvest prescription. Tractor and off road jammer harvest systems are required. Approximately 5.96 miles of secondary road new construction, 5.05 miles of spur road new construction, 1.23 miles of main and 0.84 mile of spur road reconstruction are required. A Class I stream (South Mountain Creek) is within the sale area. Class II streams are present within the sale area.

<b>2</b>	<b>Spanish Terrace Ton</b>	Pts.	10	6N/5E	748	16,800 Tons (2,400 MBF)
		Pts. W2	14	6N/5E		
		Pts. N2	15	6N/5E		

Estimated Auction: Summer 2018

This sale is located approximately 2.0 miles northwest of Idaho City, Idaho in the Spanish Fork and Wet Gulch drainages. Both drainages empty into Elk Creek, a tributary of Mores Creek. The sale will be a mark to cut selective harvest prescription. Tractor and off road jammer harvest systems are required. Approximately 0.1 mile of spur road new construction, 2.88 miles of spur road reconstruction, and 3.48 miles of secondary road opening are required. Class II streams are present within the sale area.

**Additional small volume sales:** 0 MBF

**TOTALS:** 1,203 55,000 Tons  
(9,000 MBF)

**IDAHO DEPARTMENT OF LANDS FY19 TIMBER SALE PLAN**

July 1, 2018 – June 30, 2019

Eastern  
Supervisory Area

SALE NO.	SALE NAME	SUBDIVISION	SEC	T & R	APPROXIMATE	
					ACREAGE	VOLUME
1	<b>Brockman Ton</b>	Pts. S2	3	2N/42E	650	21,745 Tons (2,500 MBF)
		Pts. NENE	8	2N/42E		
		Pts. NE, Pts. NW, Pts. SE	9	2N/42E		
		Pts. N2, Pts. E2SW, Pts. SE	10	2N/42E		
		Pts. NW, Pts. S2SW	11	2N/42E		
		Pts. All	14	2N/42E		
		Pts. NE, Pts. NW, Pts. N2SE	15	2N/42E		
		Pts. N2	23	2N/42E		
		Pts. NW	24	2N/42E		

Estimated Auction: Spring 2019

This sale is located 25 air miles southeast of Idaho Falls, Idaho. This sale is in both the Sawmill and Lava Creek drainages. Harvest prescription will be an overstory removal. Tractor skidding will be utilized. Approximately 0.5 mile of spur road will be constructed and 4.0 miles of spur road will be reconstructed. There are no Class I streams within the sale boundary. There are several Class II streams within the sale boundary.

2	<b>Hearn Creek Ton</b>	Pts. E2SW, Pts. SESE	8	01N/12E	250	22,150 Tons (2,500 MBF)
		Pts. S2	9	01N/12E		
		Pts. S2	10	01N/12E		
		Pts. N2NE, Pts. NW	15	01N/12E		
		Pts. SENE, Pts. NW, Pts. NWSW	16	01N/12E		
		Pts. N2NE	17	01N/12E		

Estimated Auction: Spring 2019

This sale is located 15 air miles northwest of Fairfield, Idaho. This sale is in several smaller drainages that flow into the South Fork of Lime Creek. Harvest prescription will be a shelterwood treatment. Tractor skidding will be utilized. Approximately 1.0 mile of spur road will be constructed. Approximately 0.5 mile of spur road will be improved or reconstructed. There are no Class I or Class II streams within the sale unit boundaries.

**Additional small volume sales:** 0

**TOTALS:** 900 43,895 Tons  
(5,000 MBF)