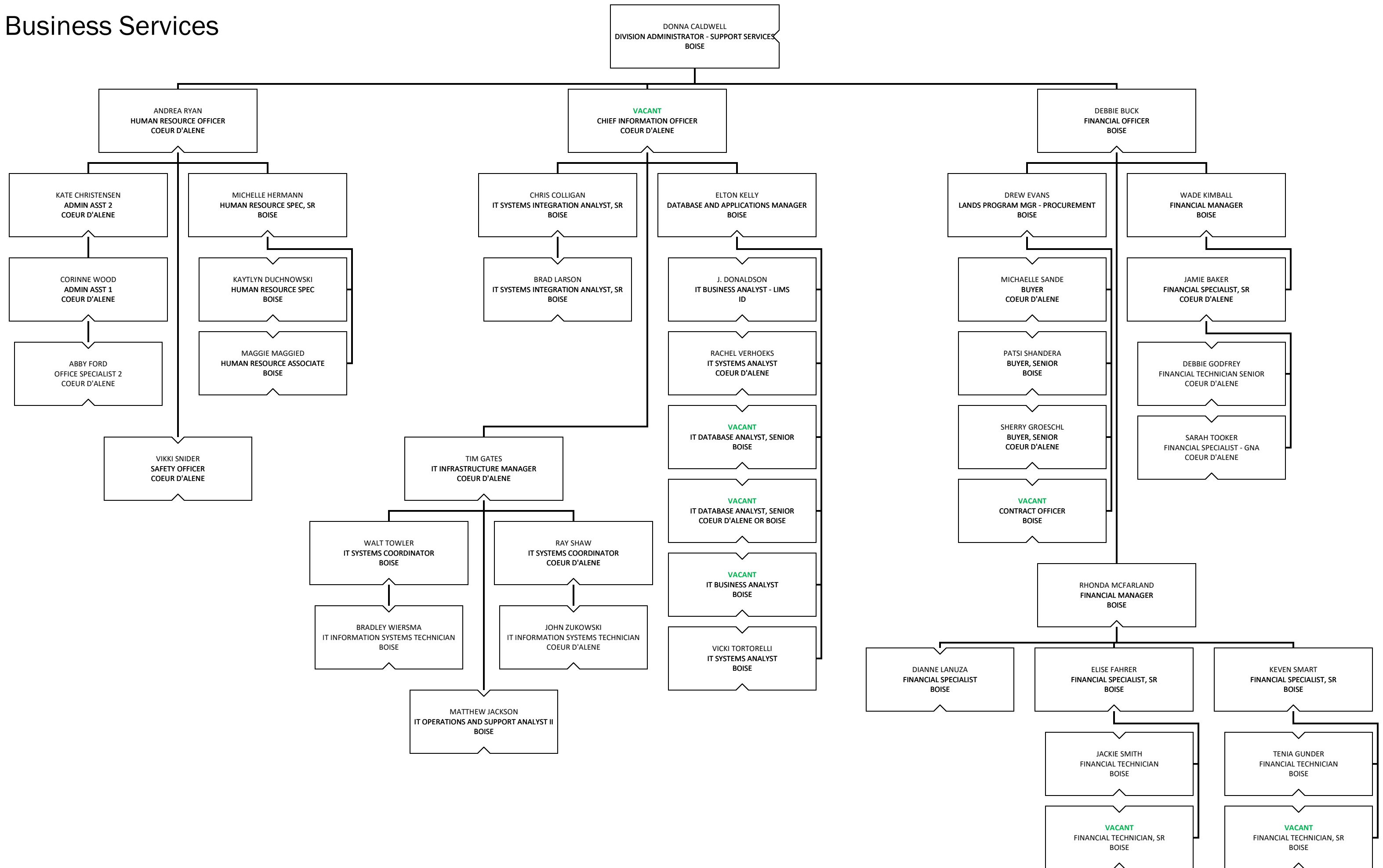
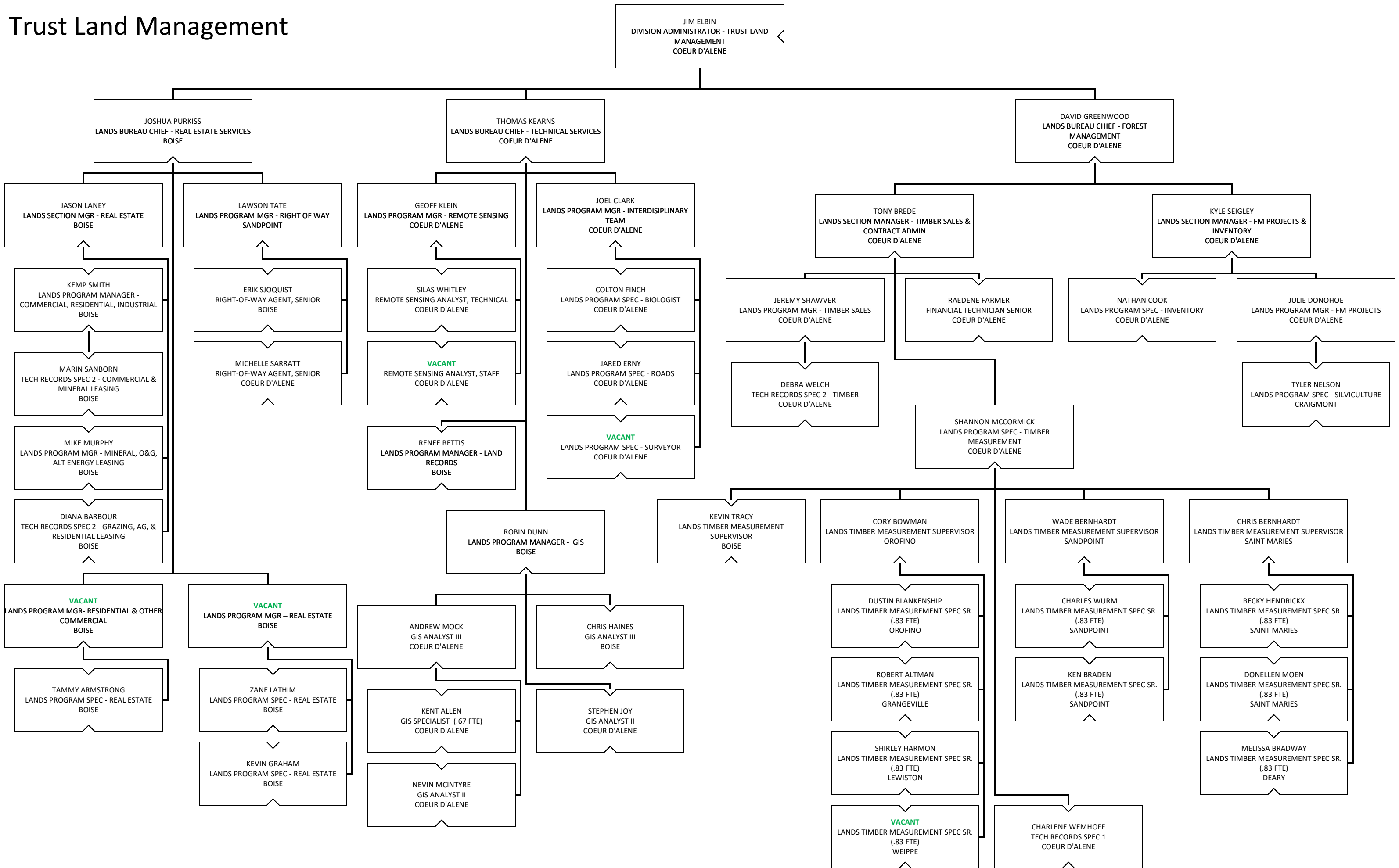


Idaho Department of Lands Organization Chart

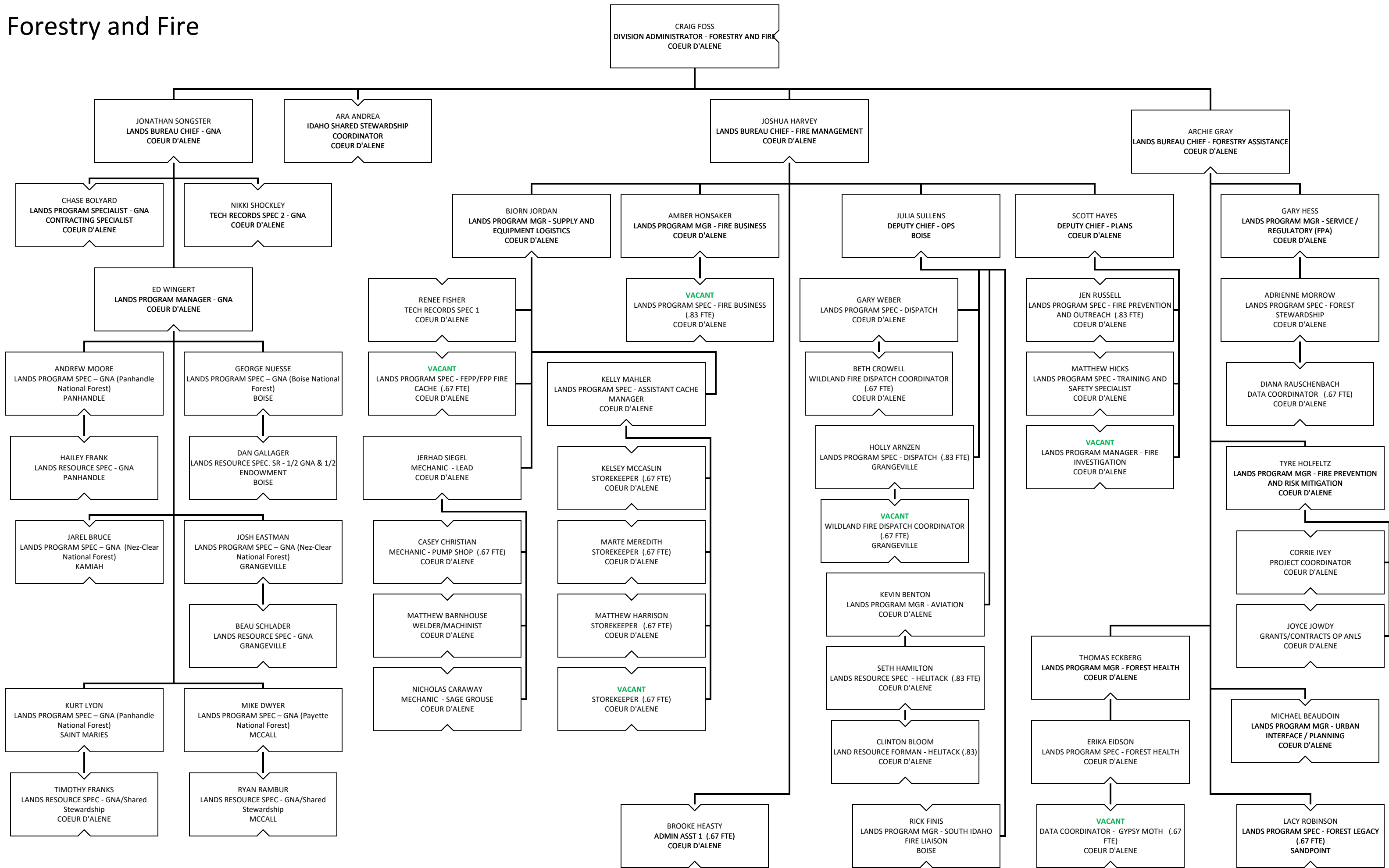
Business Services



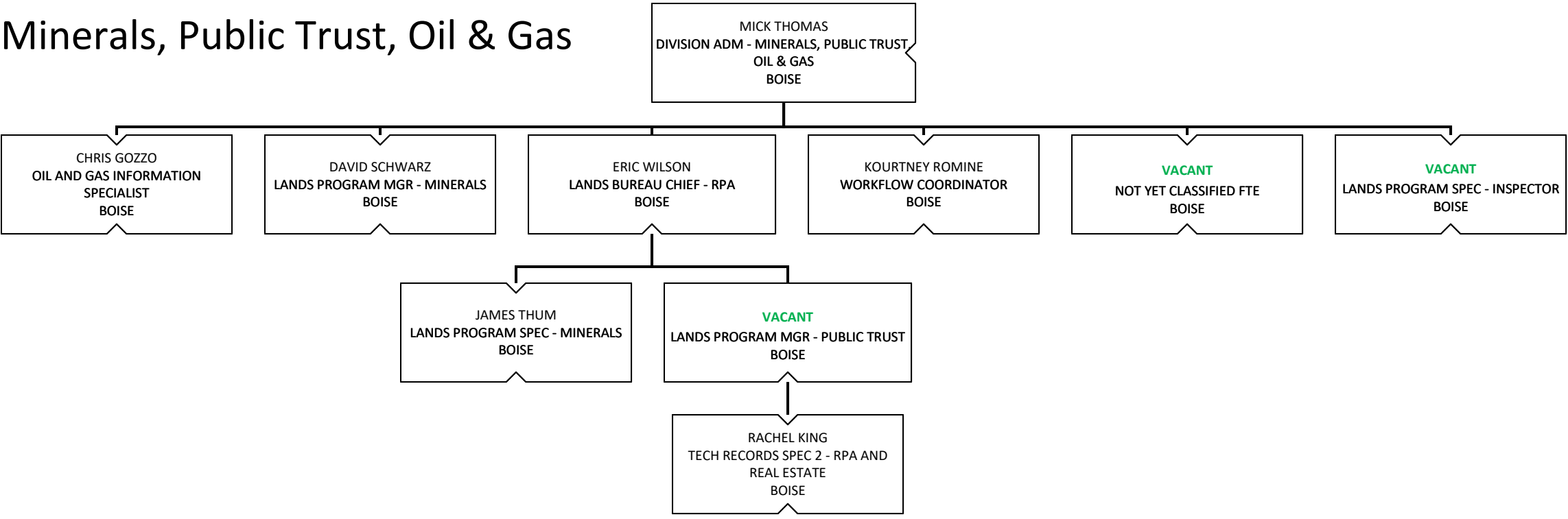
Trust Land Management



Forestry and Fire



Minerals, Public Trust, Oil & Gas



Priest Lake Supervisory Area

DANIEL BROWN
LANDS AREA MGR - PRIEST LAKE
COOLIN

DAVID THORNTON
LANDS RESOURCE SUPV - FIRE WARDEN
COOLIN

NICOLE LEE
ADMIN ASST 1
COOLIN

RON DURHAM JR
LANDS RESOURCE SUPV - FOREST
MANAGEMENT
COOLIN

JOHN COOK
LANDS RESOURCE SPEC - ASSISTANT FIRE
WARDEN
COOLIN

VACANT
LAND RESOURCE FORMAN (.83)
COOLIN

JOE HOEPPER
LANDS RESOURCE SPEC - FOREST
MANAGEMENT
COOLIN

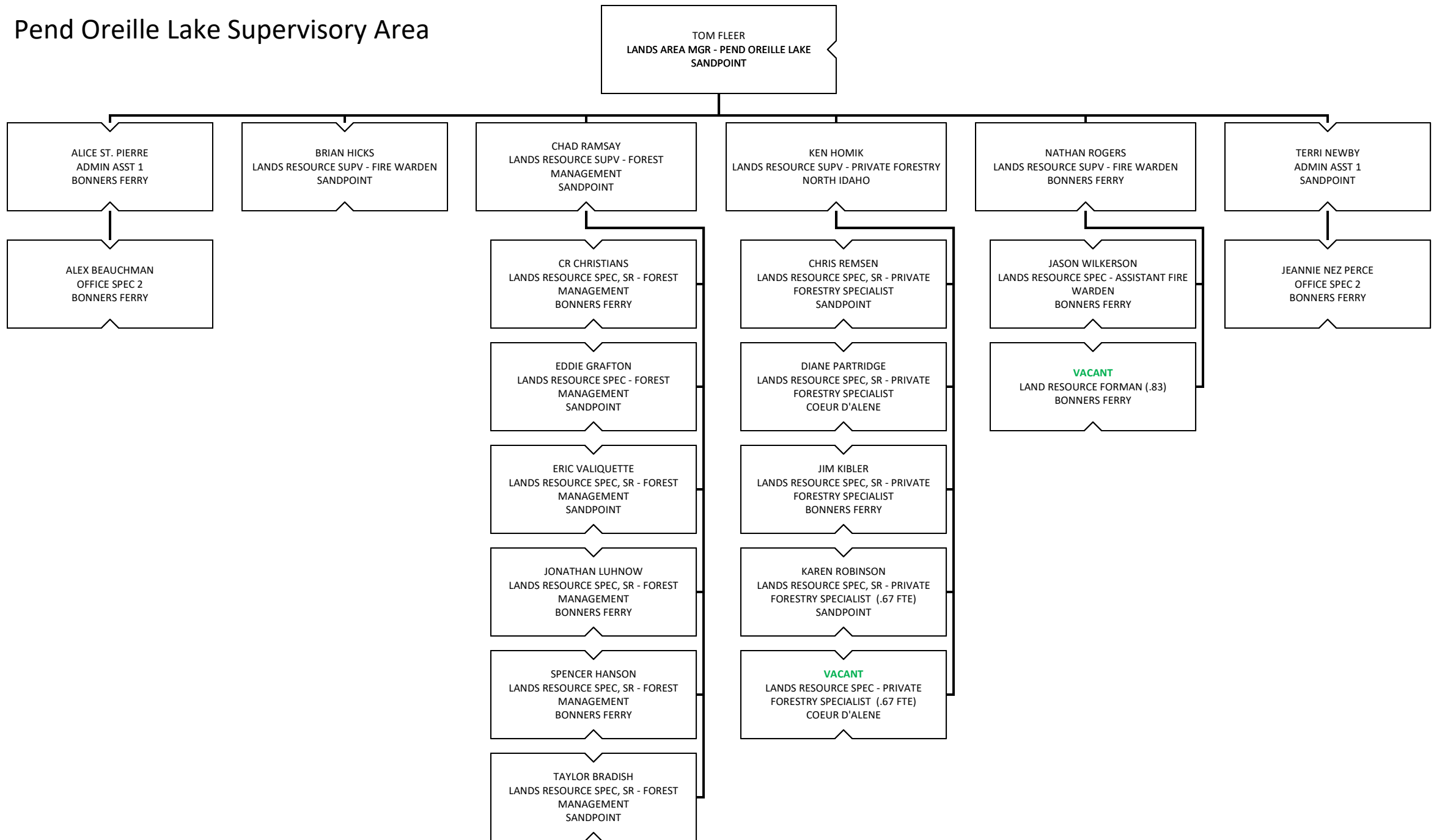
KEITH ZALEWSKI
LANDS RESOURCE SPEC, SR - FOREST
MANAGEMENT
COOLIN

NEAL CARY
LANDS RESOURCE SPEC, SR - FOREST
MANAGEMENT
COOLIN

NEIL YOUNG
LANDS RESOURCE SPEC, SR - FOREST
MANAGEMENT
COOLIN

ROBERT FUNK
LANDS RESOURCE SPEC, SR - FOREST
MANAGEMENT
COOLIN

Pend Oreille Lake Supervisory Area



MICA Supervisory Area

ANDREW SMYTH
LANDS AREA MGR - MICA
COEUR D'ALENE

CHRIS MYERS
LANDS RESOURCE SUPV - FIRE WARDEN
KINGSTON

JEANNE BRADLEY
LANDS RESOURCE SUPV - FOREST
MANAGEMENT
KINGSTON

JENNIFER CARLSON
ADMIN ASST 1
KINGSTON

MICHAEL AHMER
LANDS RESOURCE SUPV - PUB TRUST
COEUR D'ALENE

TERESA MCFADDEN
ADMIN ASST 1
COEUR D'ALENE

VACANT
LANDS RESOURCE SUPV - FIRE WARDEN
COEUR D'ALENE

TYLER GROTH
LANDS RESOURCE SPEC, SR - ASSISTANT
FIRE WARDEN
KINGSTON

ERIC KLEIN
LANDS RESOURCE SPEC, SR - FOREST
MANAGEMENT
KINGSTON

SAMANTHA DUNSMORE
OFFICE SPECIALIST 2 (.67 FTE)
KINGSTON

AMIDY FUSON
LANDS RESOURCE SPEC, SR - PUB TRUST
COEUR D'ALENE

VACANT
OFFICE SPECIALIST 2
COEUR D'ALENE

JOSH LANDERS
LANDS RESOURCE SPEC - ASSISTANT FIRE
WARDEN
COEUR D'ALENE

VACANT
LAND RESOURCE FORMAN (.83)
KINGSTON

JEREMY BRANDT
LANDS RESOURCE SPEC, SR - FOREST
MANAGEMENT
KINGSTON

JENNIFER BARKER
LANDS RESOURCE SPEC - PUB TRUST
COEUR D'ALENE

VACANT
LAND RESOURCE FORMAN (.83)
COEUR D'ALENE

LAUREN PETERSON
LANDS RESOURCE SPEC, SR - FOREST
MANAGEMENT
KINGSTON

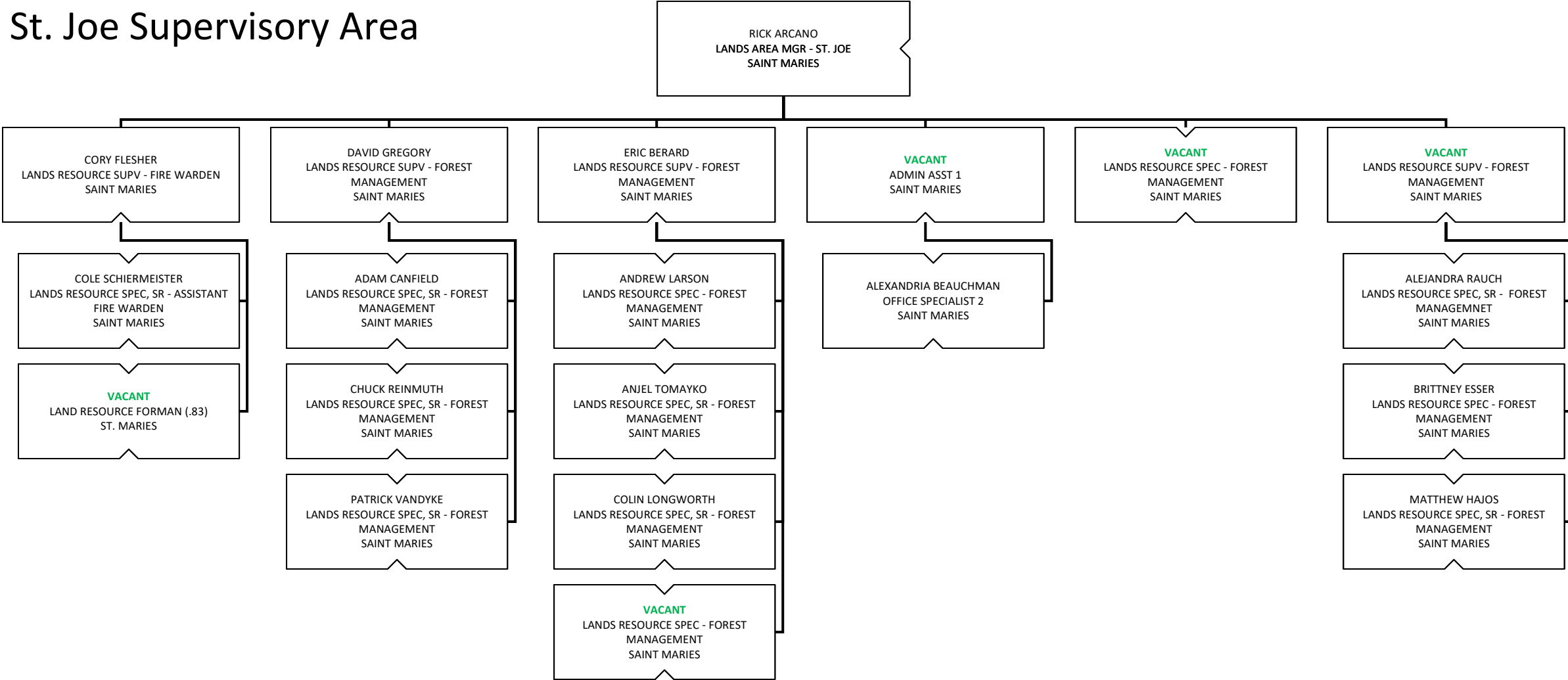
JUSTIN ESHELMAN
LANDS RESOURCE SPEC, SR - PUB TRUST
SANDPOINT

NICK CAPOBIANCO
LANDS RESOURCE SPEC, SR - FOREST
MANAGEMENT
COEUR D'ALENE

RYAN ZANDHUISEN
LANDS RESOURCE SPEC - PUB TRUST
COOLIN

VACANT
NOT YET CLASSIFIED FTE (.67 FTE)
COEUR D'ALENE

St. Joe Supervisory Area



RICK ARCANO
LANDS AREA MGR - ST. JOE
SAINT MARIES

CORY FLESHER
LANDS RESOURCE SUPV - FIRE WARDEN
SAINT MARIES

DAVID GREGORY
LANDS RESOURCE SUPV - FOREST
MANAGEMENT
SAINT MARIES

ERIC BERARD
LANDS RESOURCE SUPV - FOREST
MANAGEMENT
SAINT MARIES

VACANT
ADMIN ASST 1
SAINT MARIES

VACANT
LANDS RESOURCE SPEC - FOREST
MANAGEMENT
SAINT MARIES

VACANT
LANDS RESOURCE SUPV - FOREST
MANAGEMENT
SAINT MARIES

COLE SCHIERMEISTER
LANDS RESOURCE SPEC, SR - ASSISTANT
FIRE WARDEN
SAINT MARIES

ADAM CANFIELD
LANDS RESOURCE SPEC, SR - FOREST
MANAGEMENT
SAINT MARIES

ANDREW LARSON
LANDS RESOURCE SPEC - FOREST
MANAGEMENT
SAINT MARIES

ALEXANDRIA BEAUCHMAN
OFFICE SPECIALIST 2
SAINT MARIES

ALEJANDRA RAUCH
LANDS RESOURCE SPEC, SR - FOREST
MANAGEMENT
SAINT MARIES

VACANT
LAND RESOURCE FORMAN (.83)
ST. MARIES

CHUCK REINMUTH
LANDS RESOURCE SPEC, SR - FOREST
MANAGEMENT
SAINT MARIES

ANJEL TOMAYKO
LANDS RESOURCE SPEC, SR - FOREST
MANAGEMENT
SAINT MARIES

BRITTNEY ESSER
LANDS RESOURCE SPEC - FOREST
MANAGEMENT
SAINT MARIES

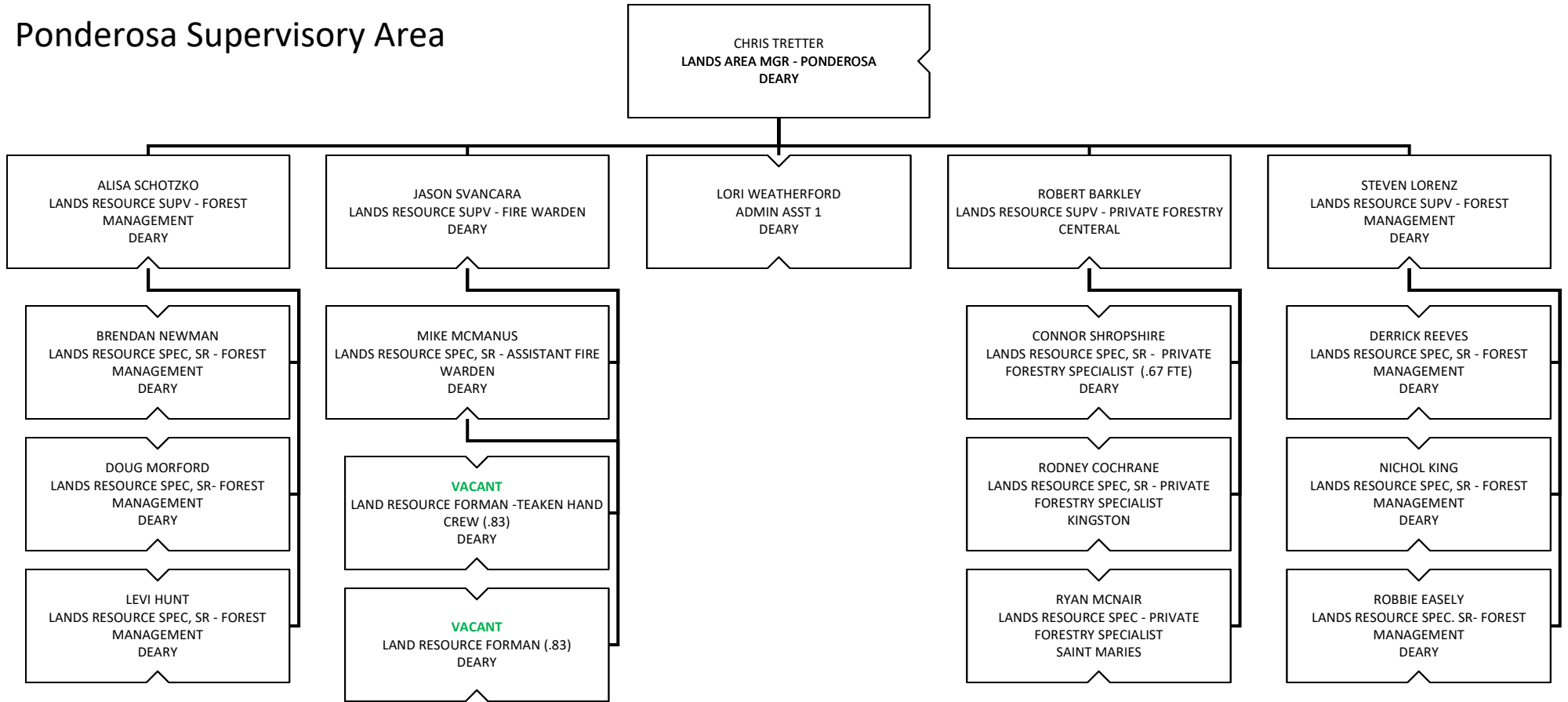
PATRICK VANDYKE
LANDS RESOURCE SPEC, SR - FOREST
MANAGEMENT
SAINT MARIES

COLIN LONGWORTH
LANDS RESOURCE SPEC, SR - FOREST
MANAGEMENT
SAINT MARIES

MATTHEW HAJOS
LANDS RESOURCE SPEC, SR - FOREST
MANAGEMENT
SAINT MARIES

VACANT
LANDS RESOURCE SPEC - FOREST
MANAGEMENT
SAINT MARIES

Ponderosa Supervisory Area



Maggie Creek Supervisory Area

DAVID SCHWARTZ
LANDS AREA MGR - MAGGIE CREEK
KAMIAH

BENJAMIN BALDWIN
LANDS RESOURCE SUPV - FOREST
MANAGEMENT
KAMIAH

DAVE LUTHER
LANDS RESOURCE SPEC, SR - PRIVATE
FORESTRY SPECIALIST
KAMIAH

IAN BRIDGES
LANDS RESOURCE SPEC, SR - GRAZING
KAMIAH

KEVIN CHAFFEE
LANDS RESOURCE SUPV - FIRE WARDEN
KAMIAH

TRACY HASZ
ADMIN ASST 1
KAMIAH

VACANT
LANDS RESOURCE SPEC - PRIVATE
FORESTRY SPECIALIST
KAMIAH

CHARLES HONEYCUTT
LANDS RESOURCE SPEC, SR - FOREST
MANAGEMENT
KAMIAH

JON RYAN
LANDS RESOURCE SPEC - FOREST
MANAGEMENT
KAMIAH

MATTHEW MILLS
LANDS RESOURCE SPEC - FOREST
MANAGEMENT
KAMIAH

NICK CARTER
LANDS RESOURCE SPEC - FOREST
MANAGEMENT
KAMIAH

RUSS GROSS
LANDS RESOURCE SPEC, SR - FOREST
MANAGEMENT
KAMIAH

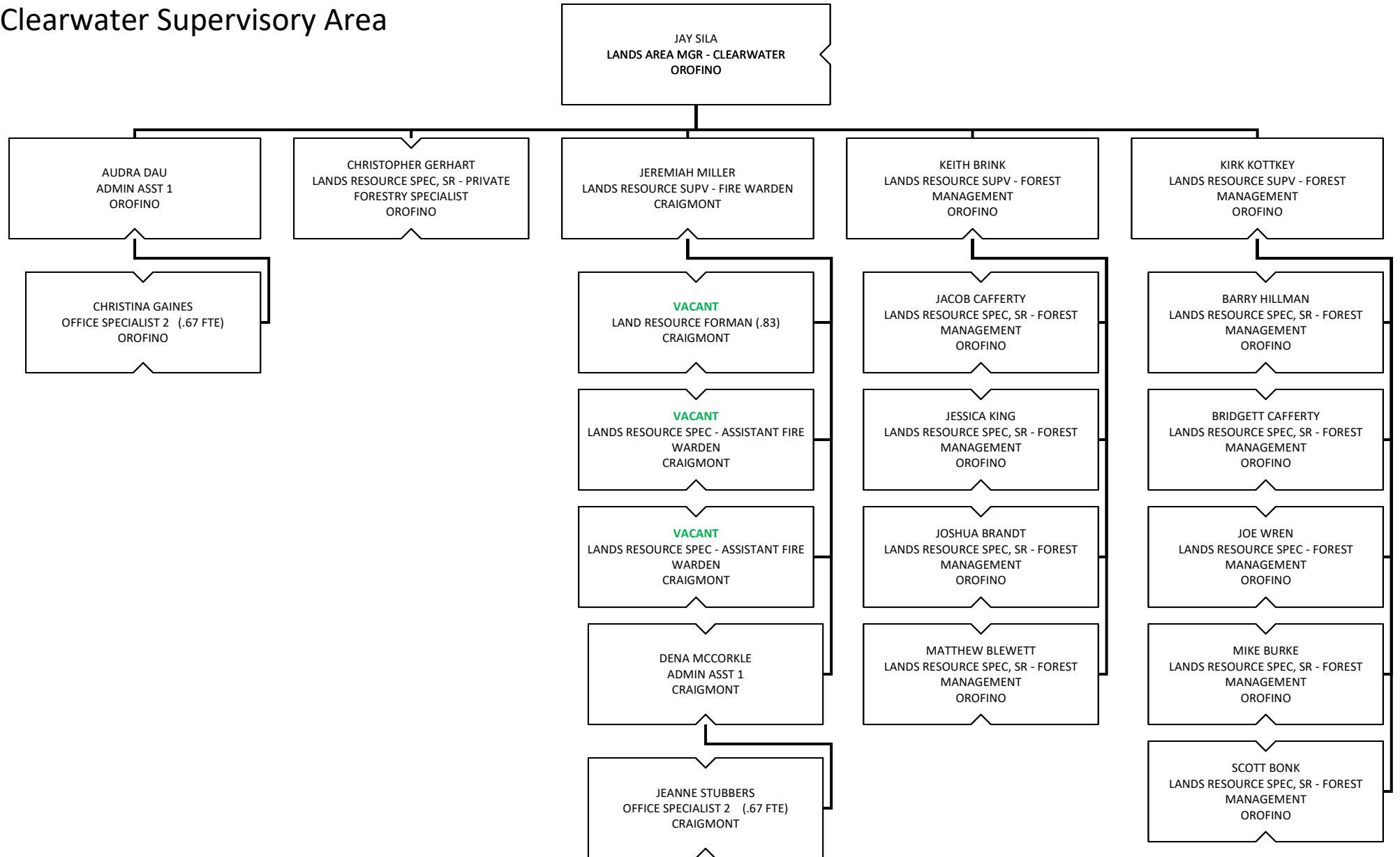
ALFRED ALLMAN
LANDS RESOURCE SPEC, SR - ASSISTANT
FIRE WARDEN
KAMIAH

DAVE CROUSSER
LANDS RESOURCE SPEC, SR - ASSISTANT
FIRE WARDEN
KAMIAH

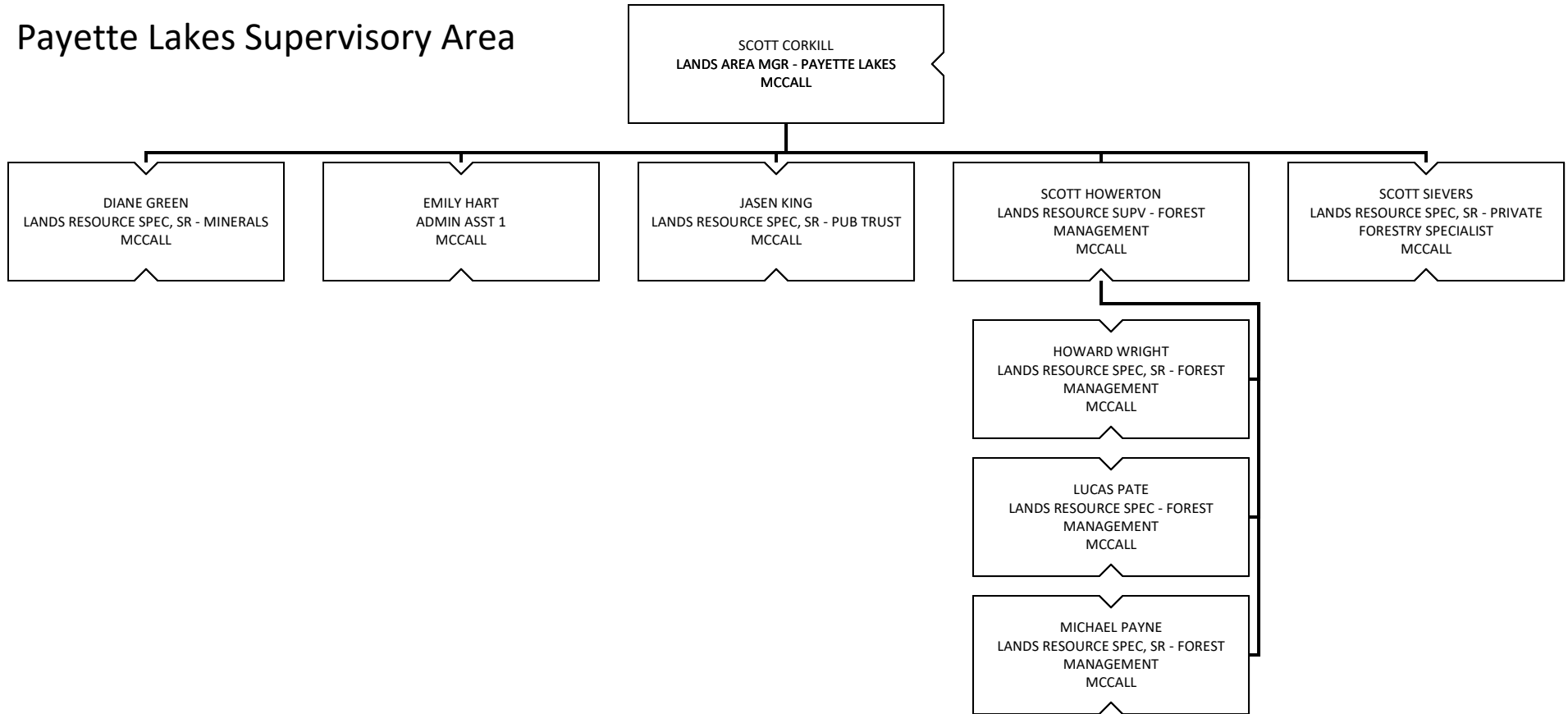
VACANT
LAND RESOURCE FORMAN (.83)
KAMIAH

KELSEY JACOBS
OFFICE SPECIALIST 2 (.67 FTE)
KAMIAH

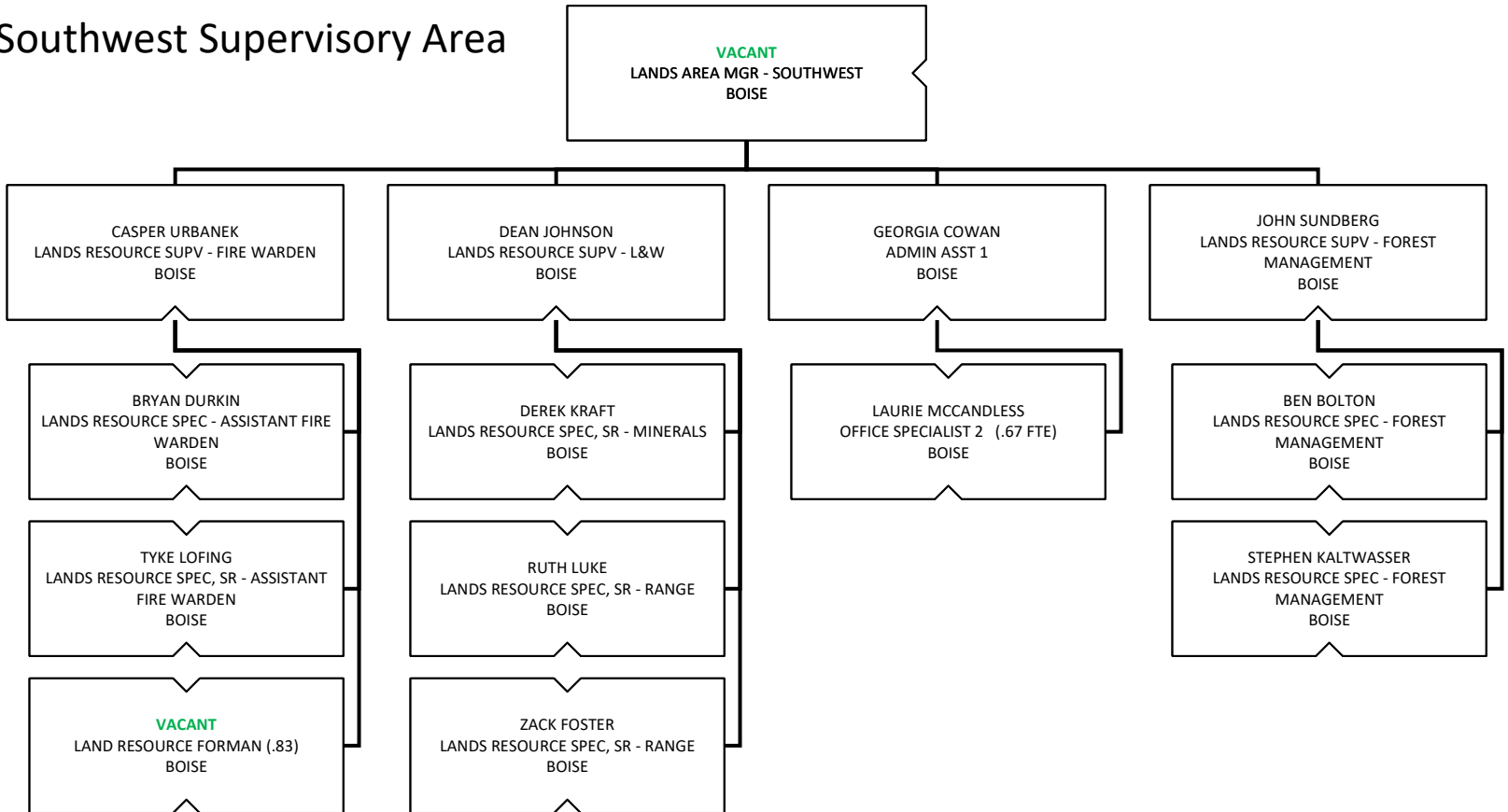
Clearwater Supervisory Area



Payette Lakes Supervisory Area



Southwest Supervisory Area



Eastern Supervisory Area

